

Models affected

- 100304- 22-kW aXis Home Standby Generator

Tools and material required (not included or provided)

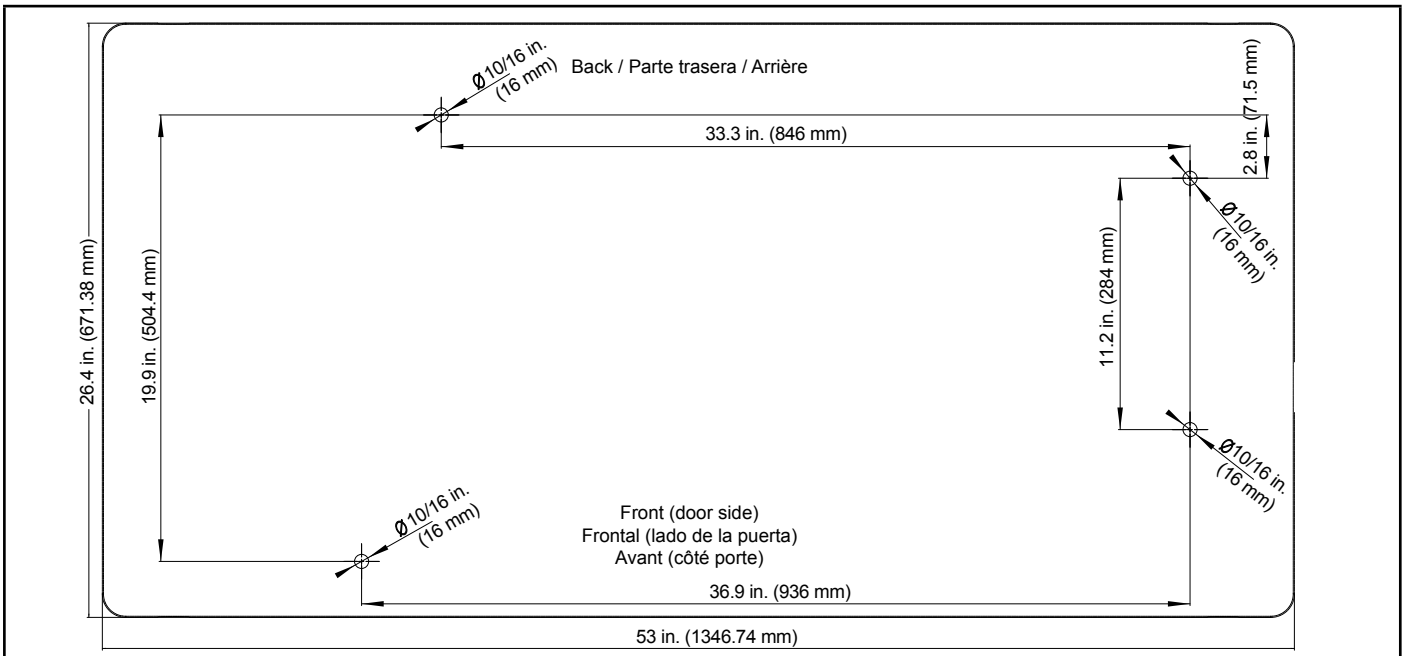
- Approved concrete pad
- Concrete Pad Hardware (22 kW [Model 100304] only)
 - 4 pieces - washer, hardened $\varnothing 0.375$ -in USS
 - 4 pieces - hex head capscrew, 0.375-16x2.00-in
- Requires 9/16" or 14mm socket with appropriate extension

SUGGESTED PREPARATION

A concrete pad can be poured or purchased through Champion and the HSB secured to it. In some areas a concrete pad is required due to high wind potential. Check local codes to see what type of mounting base is required. If a concrete pad is required, all federal, state and local codes should be followed. Unless mandated by federal, state or local code, a concrete pad is not required.

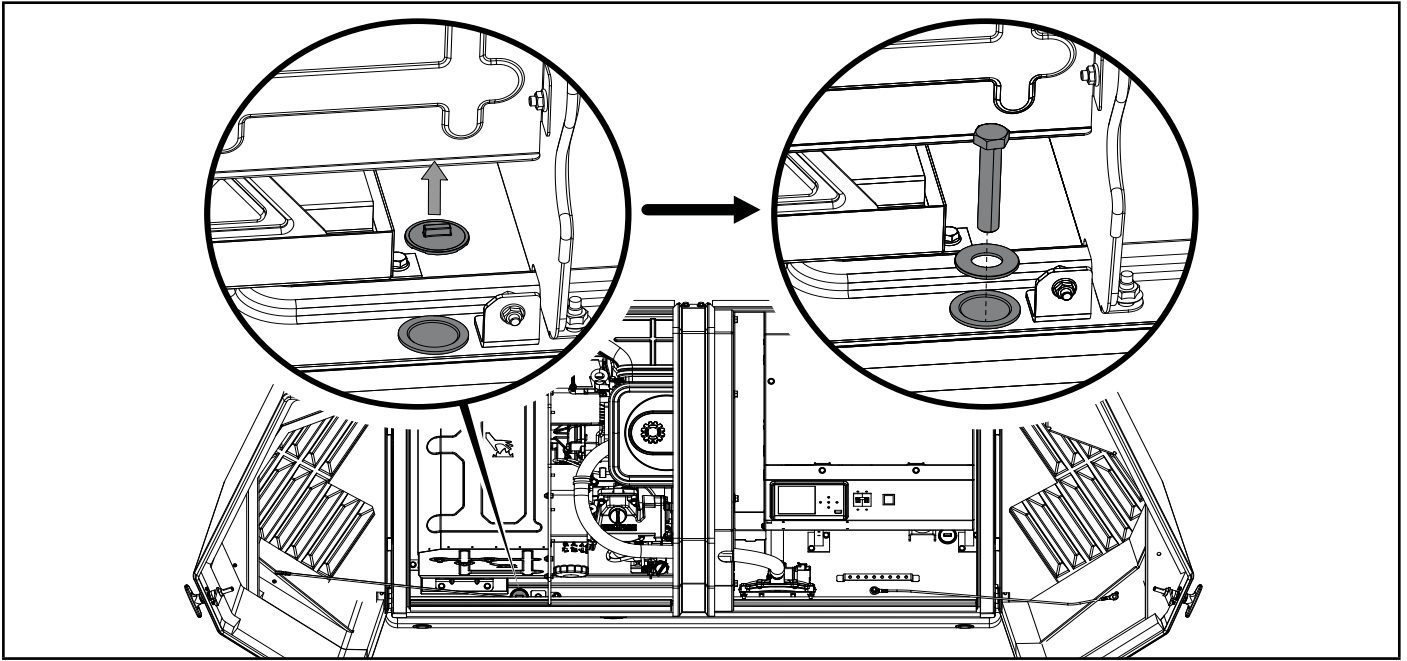
Torque 3.2 Nm (2.4 lbf-ft)

1. Below template is found on the inside top cover of your home standby to help assist you in 1:1 drilling your own holes into your concrete pad if you are not choosing the approved pad.
2. **This template shows the outline of the plastic base on your home standby.**
3. The bolts and washers which tie your home standby to the concrete pad are included for the approved pad only. If you choose your own hardware, they must meet hurricane ratings and fit into the home standby properly. Pay attention to proper torque values noted.

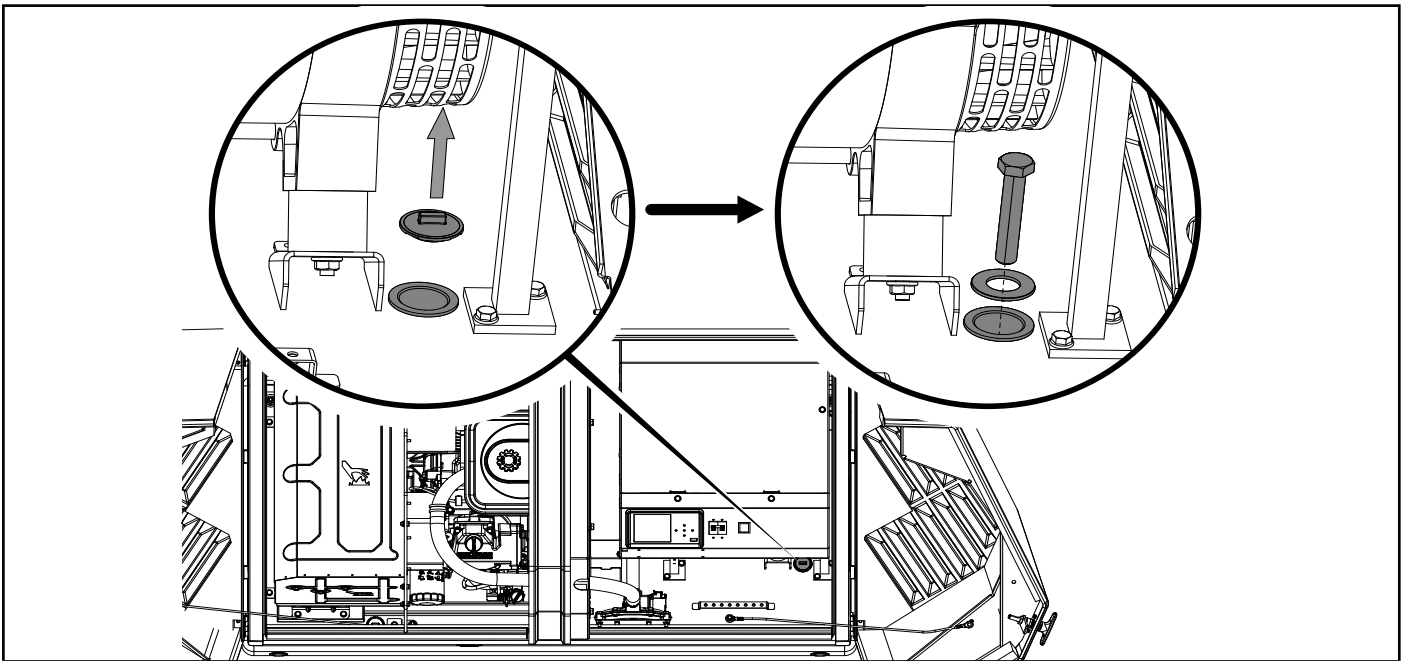


Front

1. Open left door, access hurricane bushing near front muffler side as shown. Remove bushing cap, and install washer and bolt as shown. Bolt and washer will tighten inside the hurricane bushing below the home standby pan. Torque to 3.2 Nm (2.4 lbf-ft) or hand tight and $\frac{1}{8}$ turn more.

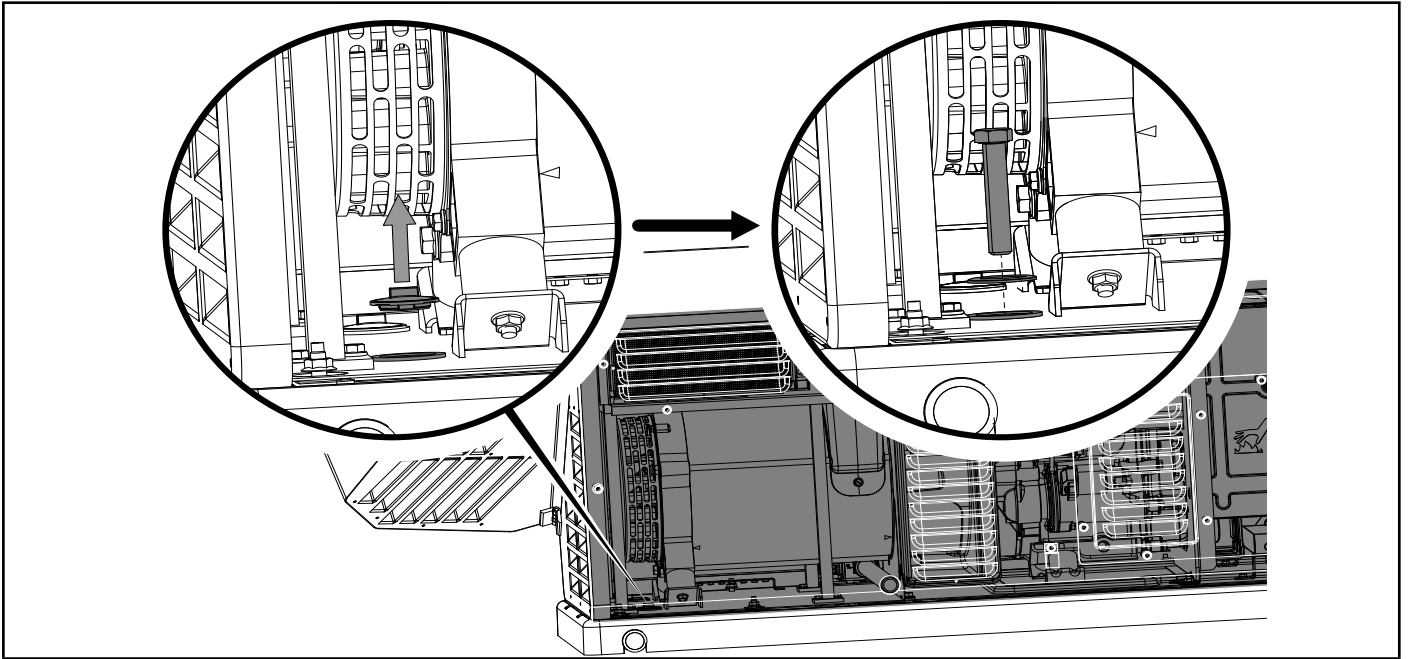


2. Open right door, access hurricane bushing near front alternator side as shown. Remove bushing cap, and install washer and bolt as shown. Bolt and washer will tighten inside the hurricane bushing below the home standby pan. Torque to 3.2 Nm (2.4 lbf-ft) or hand tight and $\frac{1}{8}$ turn more.

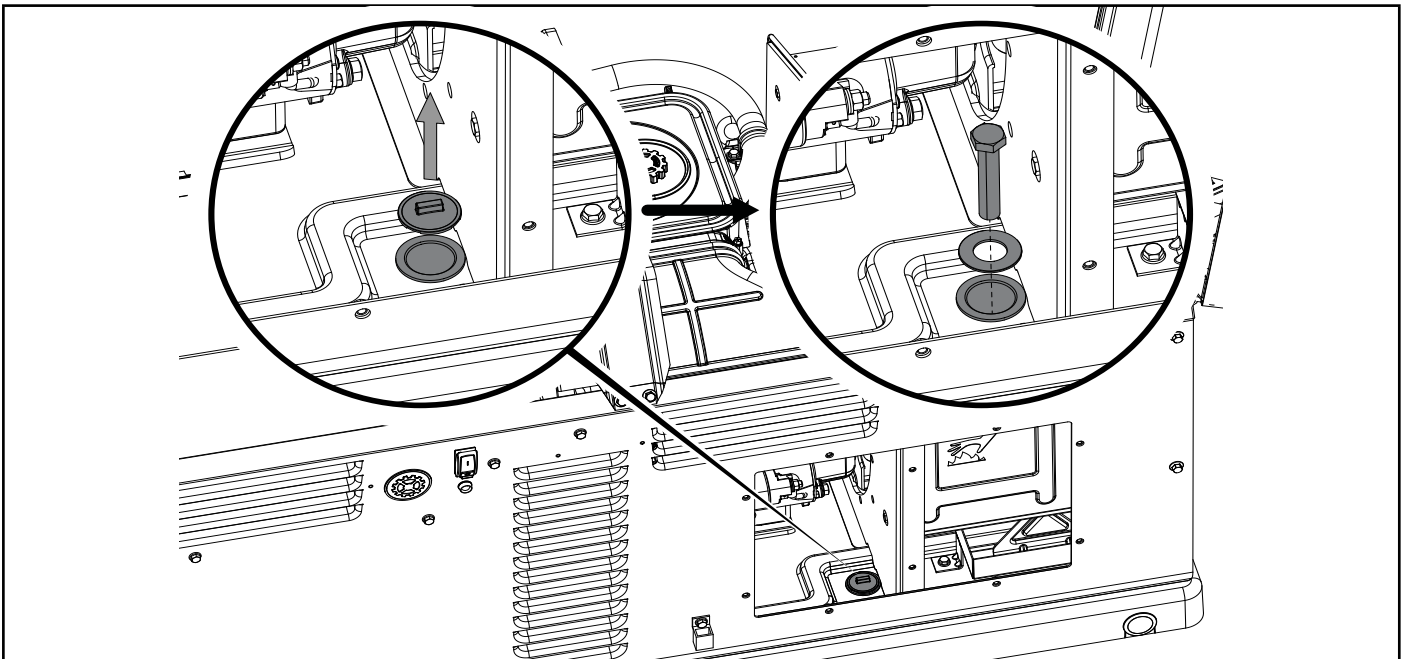


Back

3. From the front side, underneath the alternator, remove bushing cap, and install washer and bolt as shown. Lineart shows visual through the back housing. Remove bushing cap, and install washer and bolt as shown. Bolt and washer will tighten inside the hurricane bushing below the home standby pan. Torque to 3.2 Nm (2.4 lbf-ft) or hand tight and 1/8 turn more.



4. From the back side, through the access panel, access hurricane bushing near back muffler side as shown. Remove bushing cap, and install washer and bolt as shown. Bolt and washer will tighten inside the hurricane bushing below the home standby pan. Torque to 3.2 Nm (2.4 lbf-ft) or hand tight and 1/8 turn more.



INSTRUCTIONS FOR CONCRETE PAD INSTALLATION

If no concrete pad is being used, Champion recommends using a mixture of pea gravel and sand or crushed stone for placement of the mounting pad. The mounting pad **MUST** be level. The gravel mixture or crushed stone is to permit water runoff, drainage and reduce ponding of water around the HSB.

Dig an area 5 inches (12.7 cm) deep that is 6 inches (15.2 cm) longer and wider than the foot print of the HSB. See *Specifications* section for L x W dimensions.

Cover the dugout area with a weed barrier or landscape cloth if desired.

Fill the area with pea gravel and sand mixture or crushed stone. Final stone level must be 2 to 3 inches (5.1 or 7.6 cm) higher than the original ground level to ensure water run-off and drainage.