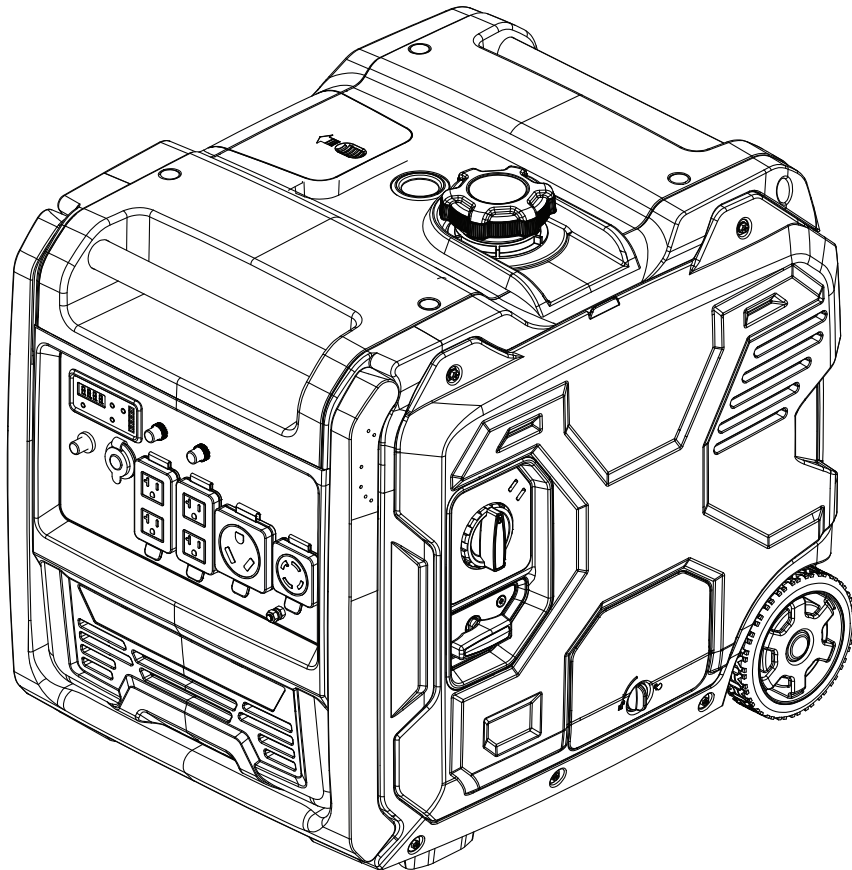




Champion Power Equipment, Inc.

MODEL #201238



PARTS INFORMATION

6500W PORTABLE INVERTER GENERATOR

SERIAL NUMBER RANGE: ALL



To order replacement parts please visit:
shop.championpowerequipment.com
or call **1-877-338-0999**.

TABLE OF CONTENTS

| | |
|--|-----------|
| Generator Parts Diagram | 3 |
| Generator Parts List | 4 |
| Engine Parts Diagram | 6 |
| Engine Parts List | 7 |
| Cylinder Head Parts Diagram | 9 |
| Cylinder Head Parts List | 10 |
| Carburetor Parts Diagram | 11 |
| Carburetor Parts List | 12 |
| Wheel Kit Parts Diagram | 13 |
| Wheel Kit Parts List | 14 |
| Fuel Tank Parts Diagram | 15 |
| Fuel Tank Parts List | 16 |
| Control Panel Parts Diagram | 17 |
| Control Panel Parts List | 18 |
| Wiring Diagram | 19 |

GENERATOR PARTS DIAGRAM

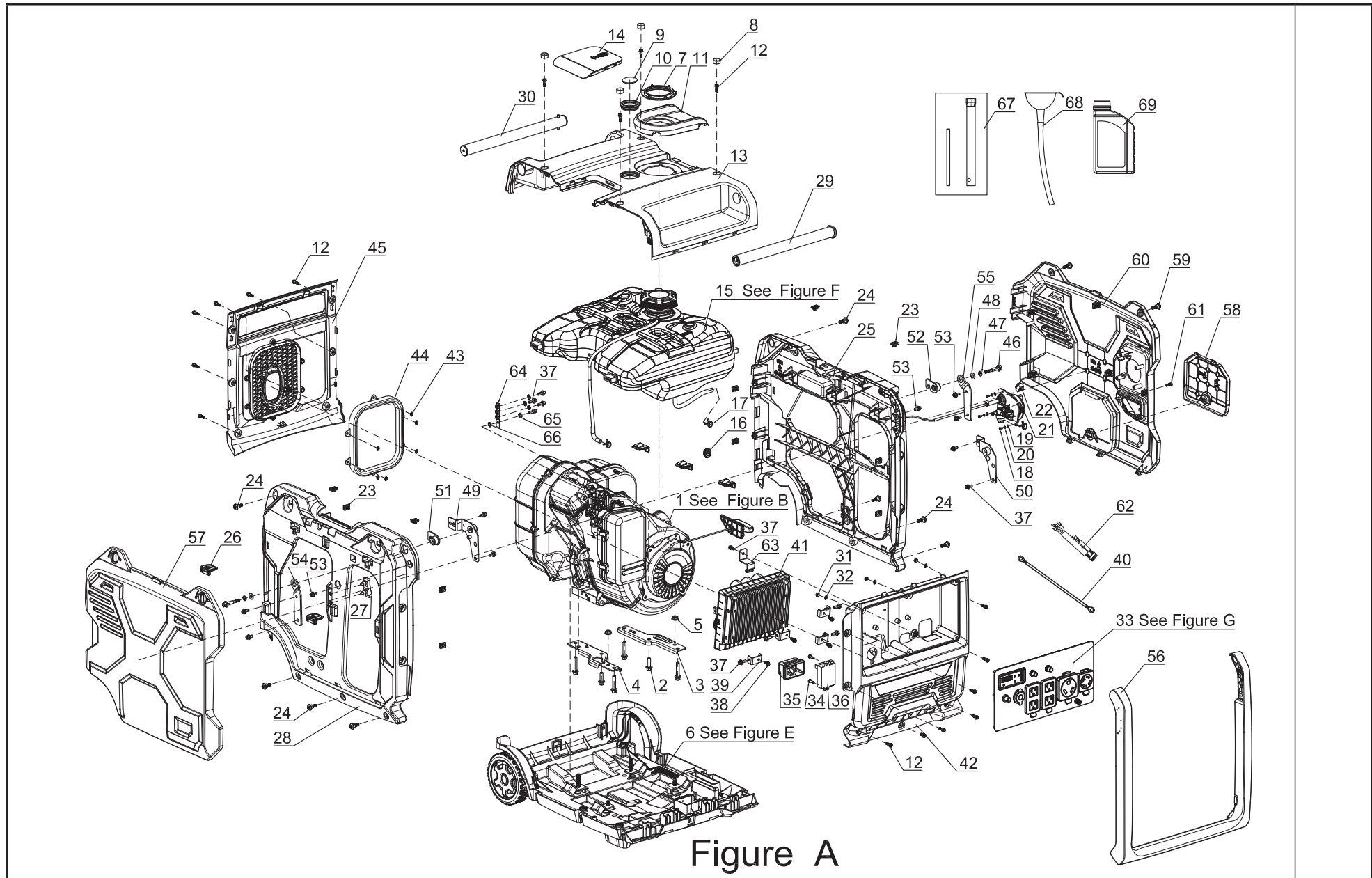


Figure A

GENERATOR PARTS LIST

| # | Part Number | Description | Qty. |
|----|---------------------|---|------|
| 1 | H225i-3-CCM0003 | H225iD-3 | 1 |
| 2 | 91101-0825-001D0 | M8 x 1.25 x 25 Hexagon Flange Bolt | 2 |
| 3 | 41102-G79D501-000D0 | Engine Mounting Bracket, Left | 1 |
| 4 | 41102-G79D502-000D0 | Engine Mounting Bracket, Right | 1 |
| 5 | 92201-0800-001D1 | Hexagon Flange Nut, M8, Blue White Zinc | 4 |
| 6 | 41400-G79D501-H04D0 | Wheel Kit Assembly- See Figure E | 1 |
| 7 | 25109-G79D501-H04D0 | Fuel Tank Fixing Nut | 1 |
| 8 | 23151-G79D501-H04D0 | Rubber Plug | 4 |
| 9 | 25220-G290010-000D0 | Fuel Gauge | 1 |
| 10 | 25221-G290010-000D0 | Fuel Gauge, Rubber Cushion | 1 |
| 11 | 26233-G79D501-000D0 | Fuel Filling Port Sleeve | 1 |
| 12 | 91705-G290503-000D0 | Hexagon Step Bolt, M5 x 16, Black Zinc | 17 |
| 13 | 41460-G79D501-H04D0 | Cover, Upper | 1 |
| 14 | 41403-G79D501-H04D0 | Access Panel, Spark Plug Service | 1 |
| 15 | 25100-G79D503-H04T0 | Fuel Tank Assembly - See Figure F | 1 |
| 16 | 41422-G290501-000D0 | Fastening Rubber Sleeve | 1 |
| 17 | 95206-E010501-000D0 | Clamp, Ø7.5 | 2 |
| 18 | 91202-0410-001D0 | Cross Pan Head Screw | 4 |
| 19 | 93108-0408-001D0 | Flat Gasket, Ø4, Blue White Zinc | 4 |
| 20 | 93103-4000-001D0 | Spring Washer, Ø4, Blue White Zinc | 4 |
| 21 | 31430-G79D501-000D0 | Engine Switch Dial Knob | 1 |
| 22 | 36104-G790501-000D0 | Switch Assembly | 1 |
| 23 | 92319-G290501-000D0 | M5 Clip Nut | 12 |
| 24 | 91705-G220501-000D0 | M6 x 20 Hexagon Step Bolt | 8 |
| 25 | 41430-G79D501-H04D0 | Right Shell | 1 |
| 26 | 65419-G79D000-000D0 | Retainer Plate | 5 |
| 27 | 41433-G79D501-H04D0 | Rubber Cushion Support | 1 |
| 28 | 41420-G79D501-H04D0 | Left Shell | 1 |
| 29 | 44410-G79D502-H02D0 | Arm 1, Front | 1 |
| 30 | 44410-G79D501-H02D0 | Arm 1, Rear | 1 |

| # | Part Number | Description | Qty. |
|----|---------------------|--------------------------------------|------|
| 31 | 92201-0400-001D0 | M4 x 0.7 Hexagon Flange Nut | 6 |
| 32 | 93104-0412-001D0 | Flat Washer, Ø4 x Ø12 x 1 | 6 |
| 33 | 36100-G79D506-H02T0 | Control Panel Assembly- See Figure G | 1 |
| 34 | 91206-4816-001D0 | Cross Pan Head Tapping Screw | 2 |
| 35 | 31311-G79D000-000D0 | Rubber Sleeve | 1 |
| 36 | 5.1830.022 | CO Detection Module | 1 |
| 37 | 91101-0612-001D0 | M6 x 12 Hexagon Flange Bolt | 13 |
| 38 | 91107-0512-001D0 | M5 x 12 Hexagon Flange Bolt | 5 |
| 39 | 36314-G79B000-H02D0 | Inverter Mounting Bracket | 4 |
| 40 | 36168-G170502-000D0 | Grounding Wire | 1 |
| 41 | 36300-G79B506-000D0 | Inverter, 5/5.5KW, 120V/240V 60Hz | 1 |
| 42 | 36103-G79D502-H04D0 | Control Panel Housing | 1 |
| 43 | 93208-G290501-000D0 | Bearing Clamp Retaining Ring | 6 |
| 44 | 23018-G79B501-000D0 | Insulator Glue Cushion, Muffler | 1 |
| 45 | 23011-G79D501-H04D0 | Muffler Housing | 1 |
| 46 | 91714-G79D000-001D0 | M6 x 13 Hexagon Step Bolt, Flange | 2 |
| 47 | 93103-0821-001D0 | Spring Washer, 8 x 2.1 | 2 |
| 48 | 93108-0816-001D0 | Flat Gasket, Ø8 | 2 |
| 49 | 44402-G79D501-000D0 | Arm Support, Left | 1 |
| 50 | 44402-G79D502-000D0 | Arm Support, Right | 1 |
| 51 | 44412-G79D503-H02D0 | Arm Connecting Seat 1, Left | 1 |
| 52 | 44412-G79D504-H02D0 | Arm Connecting Seat 1, Right | 1 |
| 53 | 91101-0612-002D0 | M6 x 12 hexagon Flange Bolt | 4 |
| 54 | 44412-G79D501-H02D0 | Arm Connecting Seat 2, Left | 1 |
| 55 | 44412-G79D502-H02D0 | Arm Connecting Seat 2, Right | 1 |
| 56 | 44410-G79D503-H04D0 | Arm Assembly | 1 |
| 57 | 41421-G79D501-Y01D0 | Left Cover Board | 1 |
| 58 | 41403-G79D502-Y01D0 | Side Access Panel, Oil Service | 1 |
| 59 | 91705-G290502-000D0 | M5 x 12 Hexagon Step Bolt | 2 |
| 60 | 41431-G79D501-Y01D0 | Right Cover Board | 1 |

| # | Part Number | Description | Qty. |
|----|---------------------|--------------------------------|------|
| 61 | 91203-0512-002D0 | M5 x 12 Countersunk Head Screw | 1 |
| 62 | 31402-G79D000-000D0 | Control Wiring Harness | 1 |
| 63 | 41228-G79D000-000D0 | Bracket, Q235 | 1 |
| 64 | 36153-G79D501-000D0 | Ground Terminal Nut, M6, Q235 | 1 |
| 65 | 93103-0616-001D0 | Spring Washer, 6 x 1.6 | 1 |
| 66 | 93113-6511-000D0 | Lock Washer, Ø6.5 x Ø11 x 0.6 | 4 |
| 67 | 96104-G79D501-000D0 | Spark Plug Sleeve | 1 |
| 68 | 96401-G79D501-000D0 | Oil Funnel, 220mm | 1 |
| 69 | 82007-G79D502-000D0 | Oil Bottle, 0.65L | 1 |

ENGINE PARTS DIAGRAM

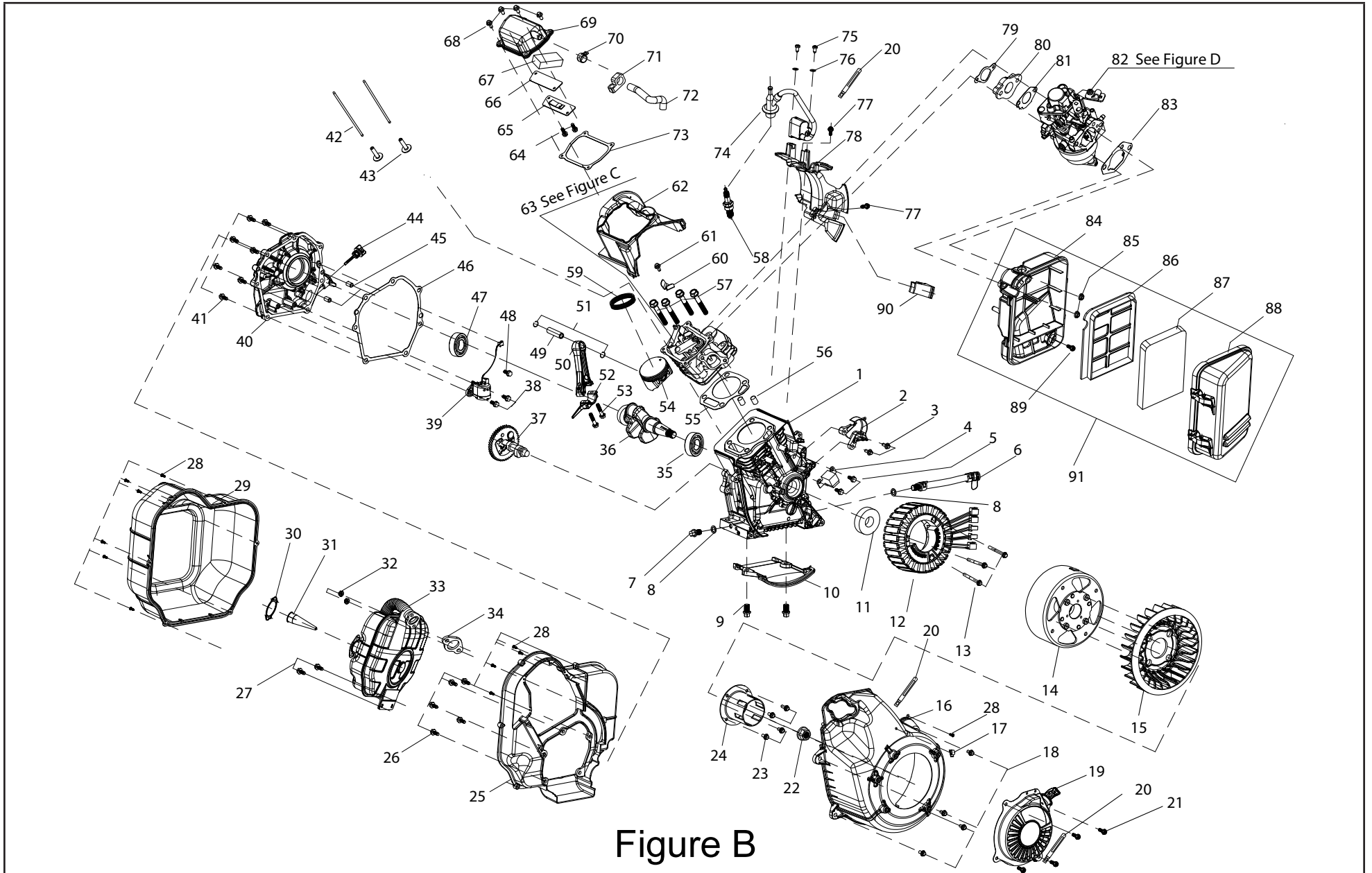


Figure B

ENGINE PARTS LIST

| # | Part Number | Description | Qty. |
|----|----------------------|---|------|
| 1 | 13310-E203501-00000 | Crankcase Assembly | 1 |
| 2 | 26203-E203501-00000 | Wind Block 1 | 1 |
| 3 | 91101-0632-001D0 | M6 x 32 Hexagon Flange Bolt | 2 |
| 4 | 31340-E203501-000D0 | Trigger | 1 |
| 5 | 91101-0612-001D0 | M6 x 12 Hexagon Flange Bolt | 2 |
| 6 | 13020-G79D501-00000 | Oil Drain Hose Assembly, Ø9.5 x Ø17 x 250 | 1 |
| 7 | 91709-E010010-000D0 | M10 x 15 Oil Drain Bolt | 1 |
| 8 | 93116-E010010-00000 | Flat Washer, Ø10 x Ø15 x 1.5 | 2 |
| 9 | 91101-0610-001D0 | M6 x 12 Hexagon Flange Bolt | 2 |
| 10 | 26232-E203501-00000 | Crankcase Bottom Shroud | 1 |
| 11 | 90001-E090030-00000 | Oil Seal, Ø30 x Ø46 x 8 | 1 |
| 12 | 33310-G79D502-000D0 | Stator Component, Ø156 x 45 | 1 |
| 13 | 91101-0660-001D0 | M6 x 60 Hexagon Flange Bolt | 3 |
| 14 | 33330-G79D501-000D0 | Rotor Component, Ø180 x 73 | 1 |
| 15 | 26201-E203501-00000 | Engine Cooling Fan | 1 |
| 16 | 28140-E203501-H0400 | Engine Shroud | 1 |
| 17 | 95203-E040010-00000 | Clip, Ø10 | 1 |
| 18 | 91101-0620-001D0 | M6 x 20 Hexagon Flange Bolt | 4 |
| 19 | 28110-E200505-H0200 | Recoil Starter Assembly | 1 |
| 20 | 91719-E180501-00000 | Recoil Starter Clamp | 2 |
| 21 | 91101-0612-001D0 | M6 x 12 Hexagon Flange Bolt | 4 |
| 22 | 92403-E040501-000D0 | M16 x 1.5 Hexagon Flange Nut | 1 |
| 23 | 91101-0616-001D0 | M6 x 16 Hexagon Flange Bolt | 4 |
| 24 | 28001-E203501-000D0 | Starter Pulley | 1 |
| 25 | 260012-E203501-00000 | Muffler Front Guard | 1 |
| 26 | 91107-0516-001D0 | M5 x 16 Hexagon Flange Bolt | 5 |
| 27 | 91101-0616-001D0 | M6 x 16 Hexagon Flange Bolt | 2 |
| 28 | 91206-4213-002D0 | Pan Head Tapping Screw, Cross, ST4.2 x 13 | 11 |
| 29 | 26001-E203502-00000 | Muffler Rear Guard | 1 |
| 30 | 31320-E203501-00000 | Spark Plug Cap Assembly | 1 |

| # | Part Number | Description | Qty. |
|----|---------------------|-------------------------------|------|
| 31 | 23190-E203501-00000 | Spark Arrester assembly | 1 |
| 32 | 92101-0800-001D0 | Hexagon Nut Type 1, M8 x 1.25 | 2 |
| 33 | 23100-E203502-H0200 | Muffler | 1 |
| 34 | 23001-E203501-00000 | Exhaust Port Gasket | 1 |
| 35 | 94100-6306-00000 | Bearing 6306 | 1 |
| 36 | 15310-E203501-00000 | Crankshaft Assembly | 1 |
| 37 | 17210-E203501-00000 | Camshaft Assembly | 1 |
| 38 | 91101-0616-001D0 | M6 x 16 Hexagon Flange Bolt | 2 |
| 39 | 31080-E203502-000D0 | Engine Oil Sensor | 1 |
| 40 | 13410-E203501-00000 | Crankcase Cover | 1 |
| 41 | 91101-0832-001D0 | M8 x 32 Hexagon Flange Bolt | 7 |
| 42 | 17010-E203501-00000 | Valve Lifter | 2 |
| 43 | 17021-E203501-00000 | Valve Tappet | 2 |
| 44 | 19010-E203501-H0100 | Oil Dipstick Assembly | 1 |
| 45 | 93302-0814-00001 | Pin, Ø8 x 14 | 2 |
| 46 | 13001-E203501-00000 | Crankcase Gasket | 1 |
| 47 | 94100-6205-00002 | Bearing 6205 | 1 |
| 48 | 91101-0612-001D0 | M6 x 10 Hexagon Flange Bolt | 1 |
| 49 | 15121-E281010-00000 | Piston Pin | 1 |
| 50 | 15011-E203501-00000 | Connecting Rod Shaft | 1 |
| 51 | 15122-E070010-00000 | Piston Pin Clip | 2 |
| 52 | 15012-E203501-00000 | Connecting Rod Cap | 1 |
| 53 | 91710-E010010-00000 | M7x32 Connecting Rod Bolt | 2 |
| 54 | 15100-E203501-00000 | Piston | 1 |
| 55 | 11131-E203501-00000 | Cylinder Head Gasket | 1 |
| 56 | 93302-1016-00001 | Pin, Ø10 x 16 | 2 |
| 57 | 91718-E203502-000D0 | M8 x 60 Cylinder Head Bolt | 4 |
| 58 | 31110-E010010-00000 | Spark Plug, F7RTC | 1 |
| 59 | 15200-E030030-00010 | Piston Ring | 1 |
| 60 | 17301-E203501-00000 | Rocker Arm Shaft Block | 1 |

| # | Part Number | Description | Qty. |
|----|---------------------|--|------|
| 61 | 91101-0616-001D0 | M6 x 16 Hexagon Flange Bolt | 1 |
| 62 | 26235-E203501-00000 | Deflector, Cylinder Head | 1 |
| 63 | 11100-E203501-00000 | Cylinder Head Assembly, See Figure C | 1 |
| 64 | 91101-0510-001D0 | M5 x 10 Hexagon Flange Bolt | 2 |
| 65 | 11431-E203501-00000 | Breather Groove Cover | 1 |
| 66 | 11432-E203501-00000 | Breather Groove Cover Gasket | 1 |
| 67 | 19211-E200010-00000 | Oil screen | 1 |
| 68 | 91101-0620-001D0 | M6 x 20 Hexagon Flange Bolt | 4 |
| 69 | 11410-E203501-00000 | Cylinder Head Cover Assembly | 1 |
| 70 | 95206-E203501-000D0 | Clip, Ø14.5 | 1 |
| 71 | 41422-G170010-000D0 | Fastening Rubber Sleeve | 1 |
| 72 | 22004-E203501-00000 | Breather Tube | 1 |
| 73 | 11401-E203501-00000 | Cylinder Head Cover Gasket | 1 |
| 74 | 31300-E203506-000Y0 | Ignition Coil | 1 |
| 75 | 91206-4213-002D0 | Pan Head Tapping Screw, Cross ST4.2 x 13 | 2 |
| 76 | 93104-0515-001D0 | Flat Washer, Ø5 x Ø15 x 1 | 2 |
| 77 | 91101-0612-001D0 | M6 x 12 Hexagon Flange Bolt | 2 |
| 78 | 26231-E203501-00000 | Crankcase Upper Shroud | 1 |
| 79 | 22002-E203501-00000 | Carburetor Insulator Gasket | 1 |
| 80 | 22006-E203501-00000 | Carburetor Insulator Plate | 1 |
| 81 | 22007-E203501-00000 | Carburetor Gasket | 1 |
| 82 | 25300-E201501-00000 | Carburetor Assembly, See Figure D | 1 |
| 83 | 22001-E203501-00000 | Air Cleaner Gasket | 1 |
| 84 | 22140-E203501-000I0 | Air Cleaner Base Assembly | 1 |
| 85 | 92201-0600-001D0 | M6 Hexagon Flange Nut | 2 |
| 86 | 22111-E203501-00000 | Bottom Case, Air Cleaner Element | 1 |
| 87 | 22130-E203501-00000 | Air Cleaner Element Assembly | 1 |
| 88 | 22115-E203501-00000 | Air Cleaner Cover | 1 |
| 89 | 91107-0616-001D0 | M6 x 16 Hexagon Flange Bolt | 1 |
| 90 | 13006-E203501-00000 | Motor Harness Outlet Block | 1 |
| 91 | 22100-E203502-000I0 | Air Cleaner Assembly | 1 |

CYLINDER HEAD PARTS DIAGRAM

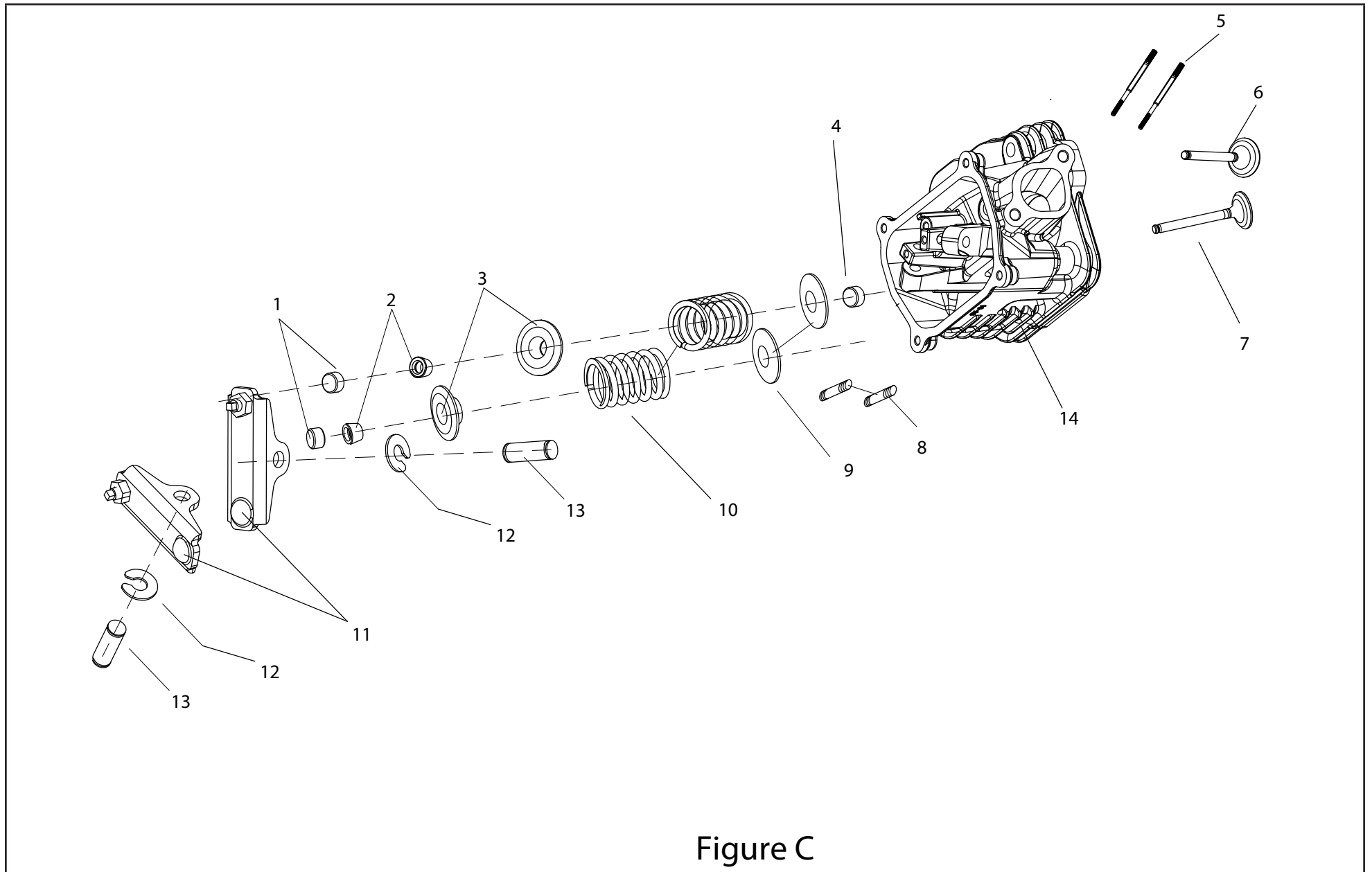


Figure C

CYLINDER HEAD PARTS LIST

| # | Part Number | Description | Qty. |
|----|---------------------|--------------------------|------|
| 1 | 11103-E010010-00000 | Valve Adjusting Cap | 2 |
| 2 | 11108-E203000-00000 | Valve Lock Clamp | 4 |
| 3 | 11105-E203501-00000 | Valve Rocker Subassembly | 2 |
| 4 | 11101-E140010-Z0100 | Seal Guide | 1 |
| 5 | 91707-E203501-000D0 | Stud, M6-M8 x 115 | 2 |
| 6 | 11122-E203501-00000 | Exhaust Valve | 1 |
| 7 | 11121-E203501-00000 | Inlet Valve | 1 |
| 8 | 91708-E010501-000D0 | M8 x 34 Stud | 2 |
| 9 | 11104-E203501-00000 | Valve Spring Retainer | 2 |
| 10 | 11102-E203501-00000 | Valve Spring | 2 |
| 11 | 17310-E203501-00000 | Valve Rocker Subassembly | 2 |
| 12 | 93205-0601-00000 | Retainer Ring | 2 |
| 13 | 17341-E203501-00000 | Valve Rocker Shaft | 2 |
| 14 | 11140-E203501-00000 | Cylinder Head | 1 |

CARBURETOR PARTS DIAGRAM

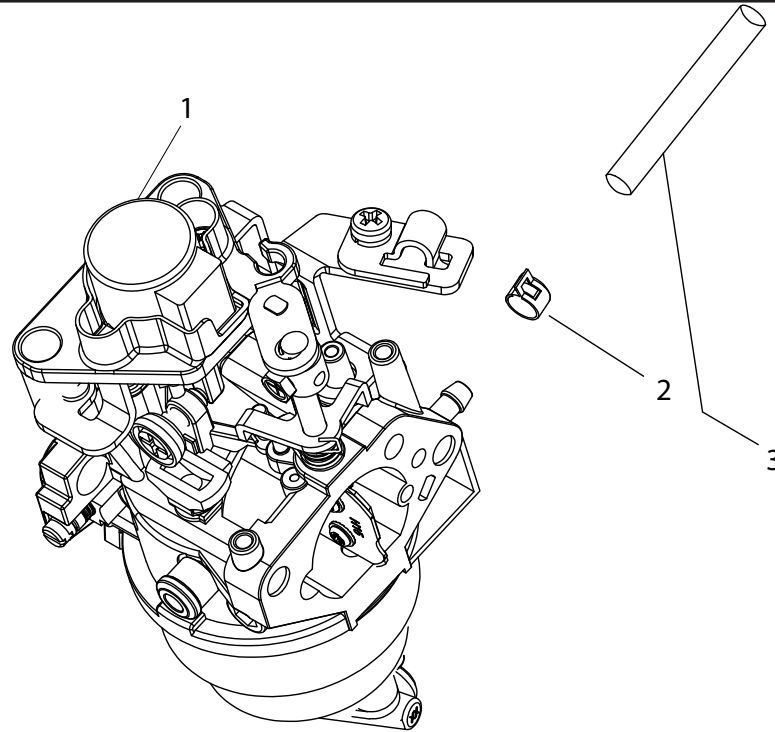


Figure D

CARBURETOR PARTS LIST

| # | Part Number | Description | Qty. |
|---|---------------------|---------------------------|------|
| 1 | 25300-E203508-000I0 | Carburetor | 1 |
| 2 | 95206-E203502-000D0 | Clamp, Ø9.5 | 1 |
| 3 | 25130-E203504-000I0 | Fuel Tube, Ø6 x Ø10 x 340 | 1 |

WHEEL KIT PARTS DIAGRAM

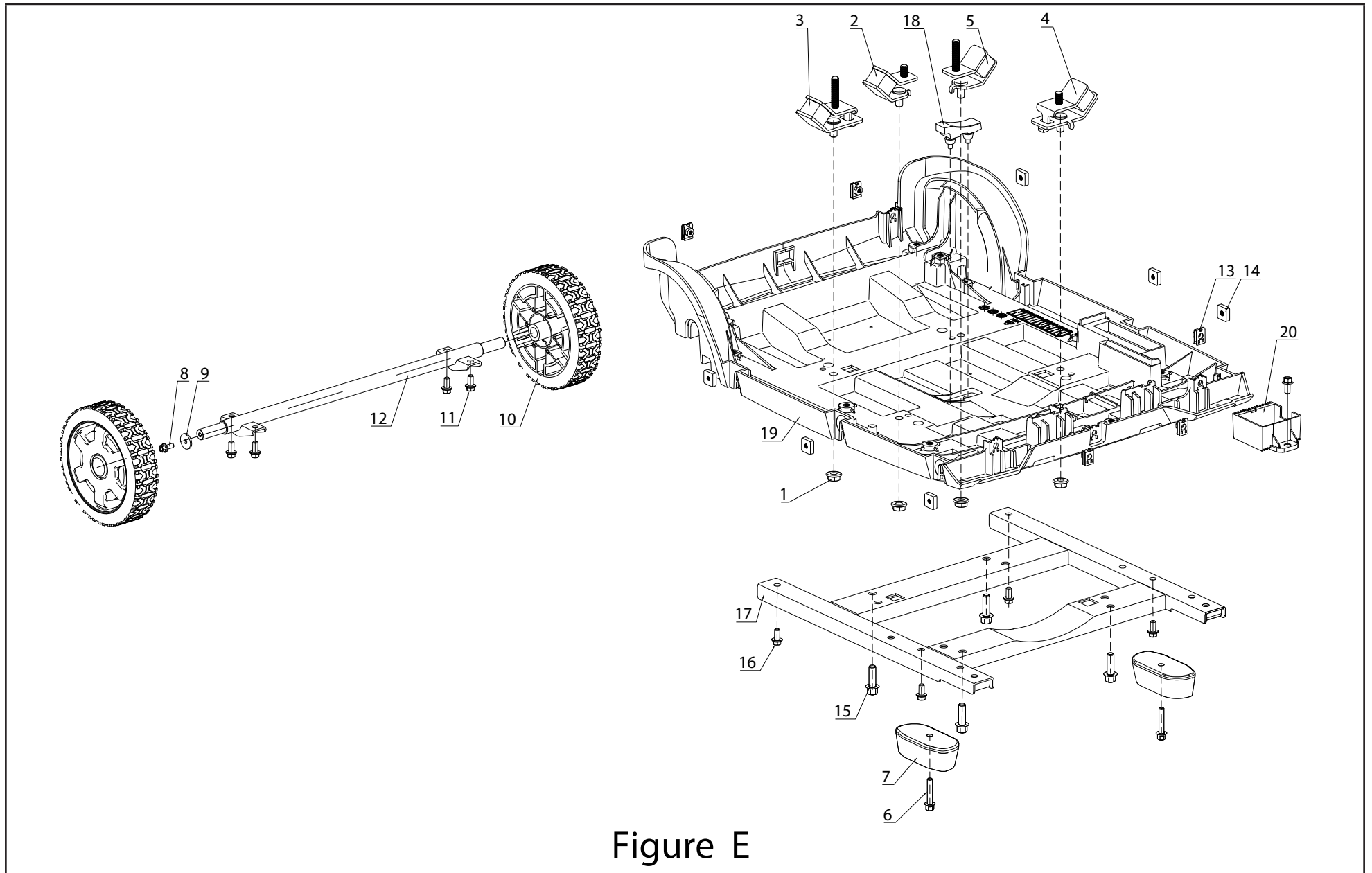


Figure E

WHEEL KIT PARTS LIST

| # | Part Number | Description | Qty. |
|----|---------------------|----------------------------------|------|
| 1 | 92201-0800-001D0 | M8 Hexagon Flange Nut | 4 |
| 2 | 41110-G79B501-000D0 | Vibration Mount 1, Left, Frame | 1 |
| 3 | 41110-G79B502-000D0 | Vibration Mount 2, Left, Frame | 1 |
| 4 | 41120-G79B501-000D0 | Vibration Mount 1, Right, Frame | 1 |
| 5 | 41120-G79B502-000D0 | Vibration Mount 2, Right, Frame | 1 |
| 6 | 91101-0630-001D0 | M6 x 30 Hexagon Flange Bolt | 2 |
| 7 | 41130-G220010-000D0 | Rubber Foot | 2 |
| 8 | 91101-0512-001D0 | M5 x 12 Hexagon Flange Bolt | 2 |
| 9 | 93107-0618-001D0 | Flat Washer, Ø6 x Ø18 x 1.6 | 2 |
| 10 | 44220-G79D501-H04D0 | 5in. Wheel, Yellow | 2 |
| 11 | 91101-0614-001D0 | M6 x 14 Hexagon Flange Bolt | 8 |
| 12 | 44110-G79D501-000D0 | Axle assembly | 1 |
| 13 | 92319-G290501-000D0 | M5 Clip Nut | 5 |
| 14 | 92318-G290501-000D0 | M6 Square Nut | 6 |
| 15 | 91714-G79D001-000D0 | Flange Hexagon Step Bolt, Orange | 4 |
| 16 | 91101-0612-001D0 | M6 x 12 Hexagon Flange Bolt | 1 |
| 17 | 41214-G79D000-H02D0 | Bracket, Q235A | 1 |
| 18 | 41433-G79D501-H04D0 | Rubber Cushion Support | 1 |
| 19 | 41410-G79D501-H04D0 | Wheel Kit | 1 |
| 20 | 31150-G79D501-000D0 | DC Module | 1 |

FUEL TANK PARTS DIAGRAM

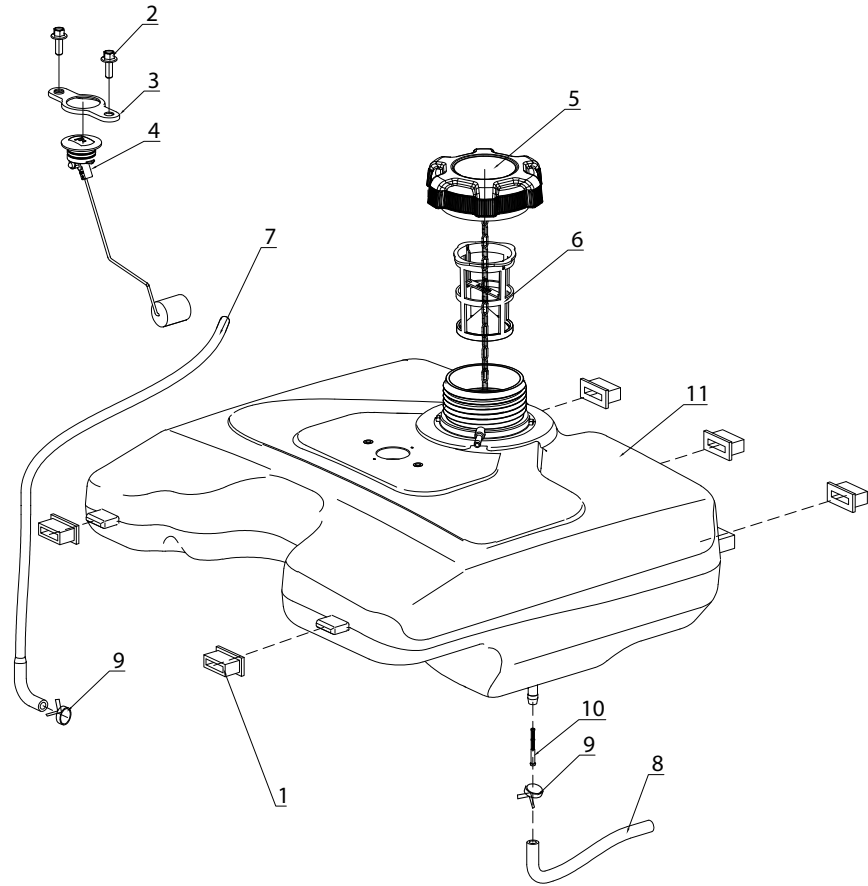


Figure F

FUEL TANK PARTS LIST

| # | Part Number | Description | Qty. |
|----|---------------------|---------------------------------|------|
| 1 | 25108-G79K501-000D0 | Support Rubber Sleeve Fuel Tank | 5 |
| 2 | 91101-0610-001D0 | M6 x 10 Hexagon Flange Bolt | 2 |
| 3 | 25214-G290501-000D0 | Fuel Gauge Coverplate | 1 |
| 4 | 25210-G79D501-000D0 | Fuel Gauge | 1 |
| 5 | 25110-G79D501-H04D0 | Fuel Tank Cap | 1 |
| 6 | 25190-G79D501-000D0 | Fuel Filter, Fuel Tank | 1 |
| 7 | 25501-G79D501-000D0 | Fuel Tube Rubber Sleeve | 1 |
| 8 | 25130-G79D501-000K0 | Fuel Tube, Ø4.5 x Ø8.5 x 135 | 1 |
| 9 | 95206-G290501-000D0 | Clamp, Ø10 | 1 |
| 10 | 25190-G290030-000D0 | Fuel Filter, Fuel Tube | 1 |
| 11 | 25140-G79D503-H04D0 | Fuel Tank | 1 |
| 12 | 25134-G79D501-000D0 | Fuel Tube Sleeve | 1 |

CONTROL PANEL PARTS DIAGRAM

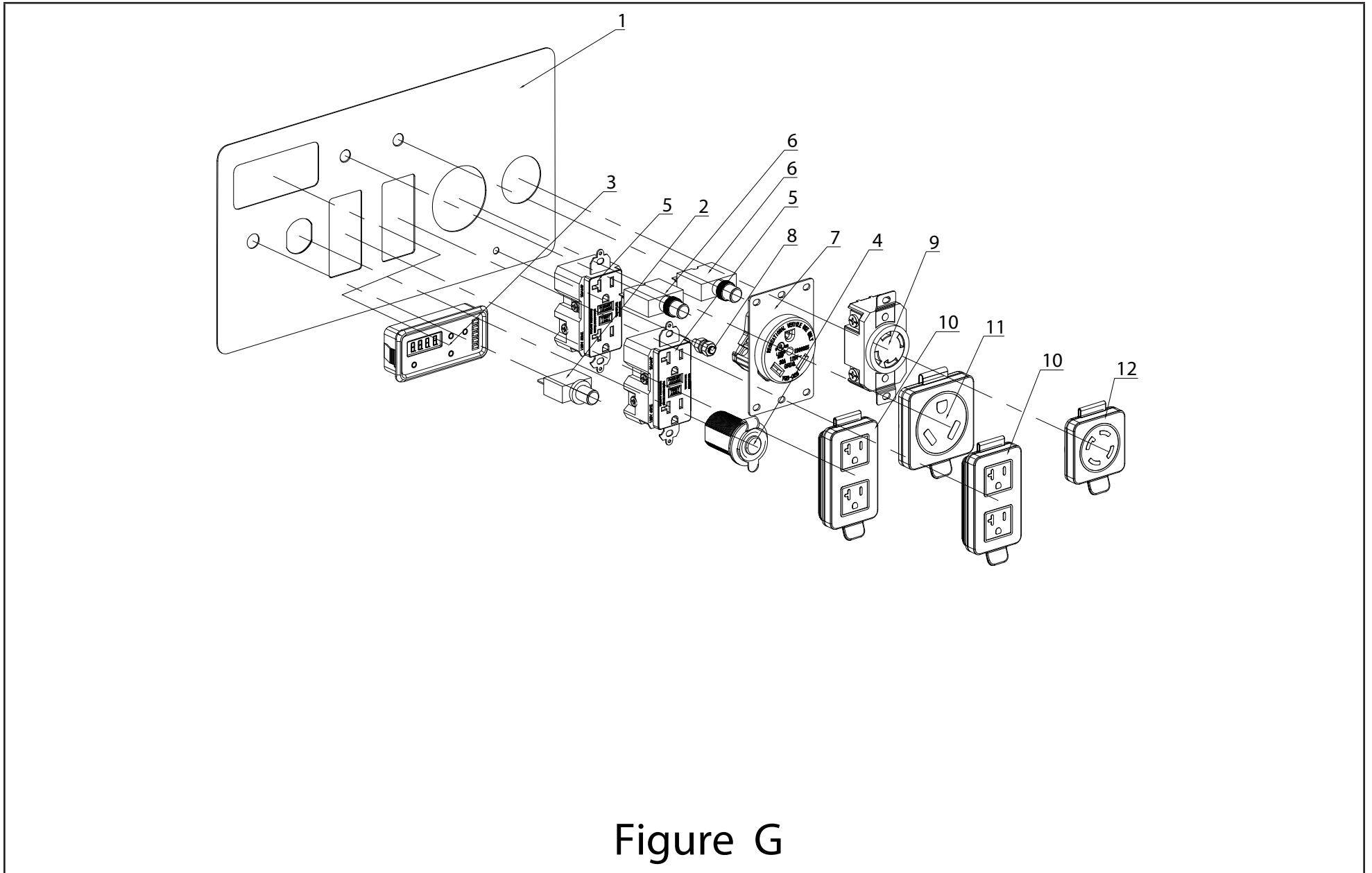


Figure G

CONTROL PANEL PARTS LIST

| # | Part Number | Description | Qty. |
|----|---------------------|---|------|
| 1 | 36121-G79D501-00000 | Control Panel, B-1.0 | 1 |
| 2 | 36131-G030502-00000 | Overcurrent Protector, 8A, Waterproof Cap | 1 |
| 3 | 36126-G790501-000D0 | Intelligauge, INT5CINV | 1 |
| 4 | 36134-G110010-00000 | Automotive Receptacle, 12V DC | 1 |
| 5 | 36132-G030080-00000 | 5-20R GFCI Receptacle, 20A, 125V | 2 |
| 6 | 36131-G030504-00000 | 20Amp Circuit Breaker, Push Button | 2 |
| 7 | 36132-G240503-00000 | TT-30R Receptacle, 30A, 125V | 1 |
| 8 | 36153-G290501-00000 | Grounding Terminal | 1 |
| 9 | 36132-G030040-00000 | L14-30R Receptacle, 30A, 250V | 1 |
| 10 | 36163-G290010-00000 | Receptacle Cover, 5-20R | 2 |
| 11 | 36163-G240502-00000 | Receptacle Cover, TT-30R | 1 |
| 12 | 36163-G030050-00000 | Receptacle Cover, L14-30R | 1 |

WIRING DIAGRAM

