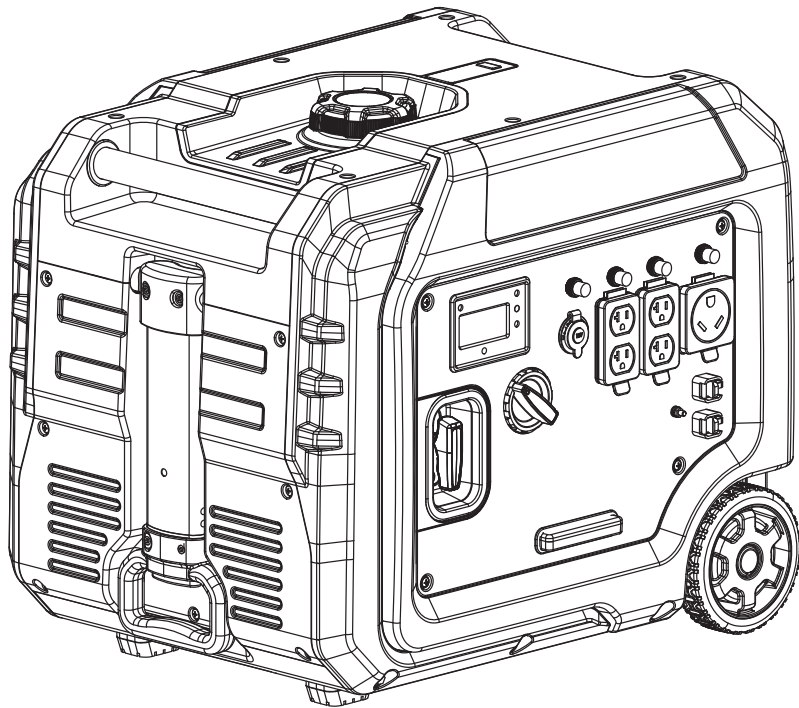




Champion Power Equipment, Inc.

MODEL #201351



PARTS INFORMATION

5500W PORTABLE INVERTER GENERATOR

SERIAL NUMBER RANGE: ALL



To order replacement parts please visit:
shop.championpowerequipment.com
or call **1-877-338-0999**.

TABLE OF CONTENTS

Inverter Generator Parts Diagram	3
Inverter Generator Parts List	4
Engine Parts Diagram	6
Engine Parts List	7
Cylinder Head Parts Diagram	9
Cylinder Head Parts List	10
Carburetor Parts Diagram	11
Carburetor Parts List	12
Fuel Tank Parts Diagram	13
Fuel Tank Parts List	14
Control Panel Parts Diagram	15
Control Panel Parts List	16
Base Parts Diagram	17
Base Parts List	18
Wiring Diagram	19

INVERTER GENERATOR PARTS DIAGRAM

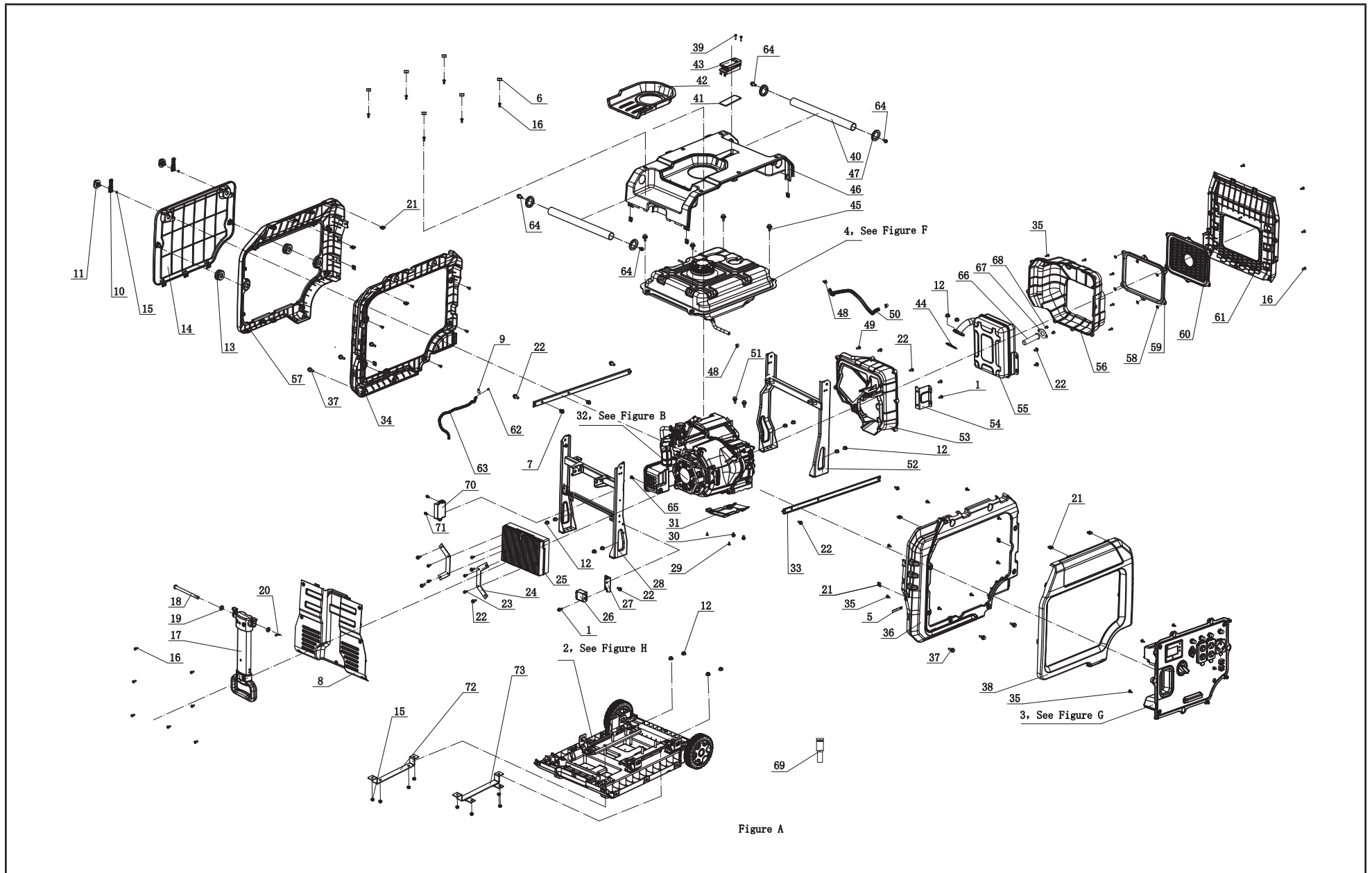


Figure A

INVERTER GENERATOR PARTS LIST

#	Part Number	Description	Qty.
1	1.5789.0615	Flange Bolt M6 x 15	3
2	63.200600.00	Base Setting Component Assembly See Figure H	1
3	63.210000.01	Control Panel Assembly See Figure G	1
4	63.070000.01	Fuel Tank Assembly See Figure F	1
5	2.05.050	Wire Clamp 100	3
6	63.200503.00	Connect Port Cover	6
7	2.05.001	Clamp Ø8 x 6.5	2
8	63.200200.00	Left Cover	1
9	2.06.006	Clamp Ø7 x Ø1	1
10	63.200410.01	Cover Rotary Knob	2
11	63.200410.00	Rotary Knob Rear Cover Protector	2
12	1.6177.1.08	Flange Lock Nut M8	14
13	63.200103.00	Rubber Sleeve	2
14	63.200402.00	Rear Cover Protector	1
15	1.6177.1.06	Flange Lock Nut M6	10
16	1.818.0514.1	Screw M5x14	22
17	63.200700.00	Handle Assembly	1
18	63.200509.00	Pin Handle	1
19	2.03.073	Bushing	2
20	2.16.006	Cotter Pin(Ø2x20)	1
21	2.02.010	Cage Nut M5	20
22	1.5789.0612	Flange Bolt M6 x 12	13
23	1.5789.0512	Flange Bolt M5 x 12	5
24	63.220004.00	Control Unitb Holder	2
25	63.221000.02	Wireless Parallel Control Unit 4.0KW (120V/60Hz)	1
26	5.1800.011	Rectifier	1
27	63.200018.01	Support Arm	1
28	63.201100.03	Left Supporter	1

#	Part Number	Description	Qty.
29	1.845.3595	Screw ST3.5 x 9.5	2
30	1.5789.0610	Flange Bolt M6 x 10	2
31	63.080600.01	Lower Protector Assembly	1
32	63.402	Engine 224 cc See Figure B	1
33	63.201600.03	Fuel Tank Supporter	2
34	63.200401.01	Rear Cover Supporter (Black)	1
35	1.845.4216	Screw ST4.2 x 16	29
36	63.200101.01	Front Cover Supporter (Black)	1
37	2.08.075.1	Bolt M6 x 20	6
38	63.200101.00	Front Covert	1
39	1.823.0325	Screw M3x25	2
40	63.200700.01	Handle	2
41	63.213004.02	Rubber Pad	1
42	63.200502.00	Fuel Tank Spillway	1
43	63.214000.00	Fuel Tank Indicator Light Assembly	1
44	26.100001.00	Exhaust Gasket	1
45	2.08.179.1	Flange Bolt M6 x 25	4
46	63.200500.00	Top Cover (Black)	1
47	63.200102.00	Rubber Sleeve	4
48	2.06.018	Clamp Ø10.5 x b8	3
49	2.08.102	Screw M6x13	1
50	63.070011.01	Fuel Pipe Fuel Valve To Carburetor	1
51	2.08.168	Bolt	2
52	63.201100.02	Right Supporter	1
53	63.081100.00	Front Muffler Protector Assembly	1
54	63.101005.00	Muffler Assembly Supporter	1
55	63.101000.00.2	Muffler Assembly	1
56	63.081200.00	Rear Muffler Protector Assembly	1
57	63.200401.00	Rear Cover Supporter (Black)	1
58	2.03.069	Retaining Ring M5	6

#	Part Number	Description	Qty.
59	63.200304.00	Muffler Cover Rubber Seal	1
60	63.200303.00	Muffler Cover	1
61	63.200302.00	Right Side Cover (Black)	1
62	24.070030.00	Breather Tube Hole	1
63	63.070014.01	Fuel Tank To Canister Pipe	1
64	1.16674.0812	Flange Bolt M8 x 12	4
65	1.818.0514.1	Screw M5×20	2
66	46.101300.08	Spark Arrester Assembly	1
67	46.101503.08	Spark Arrester Plate	1
68	1.9074.13.0514	Screw/Washer Assembly M5 x 10	2
69	9.1130.000.1	Wrench 10 (Black)	1
70	5.1830.022	CO Shutdown Module	1
71	1.16674.0512	Bolt M5 x 12	2
72	63.202400.01	Transportation Support 2	1
73	63.202400.00	Transportation Support 1	1

ENGINE PARTS DIAGRAM

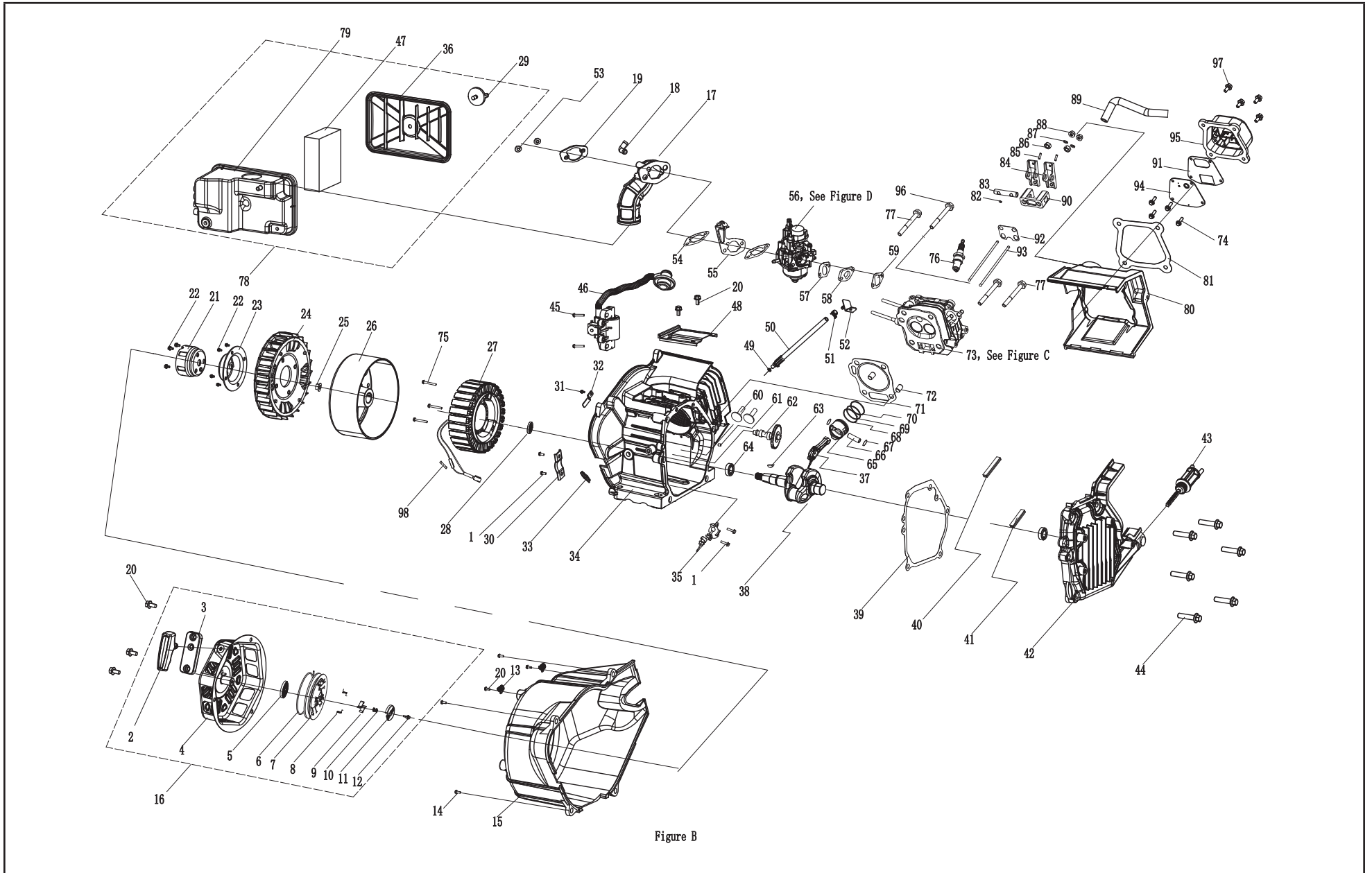


Figure B

ENGINE PARTS LIST

#	Part Number	Description	Qty.
1	1.5789.0612	Flange Bolt M6 x 12	4
2	62.061300.00	Soft Recoil Handle	1
3	63.061200.00	Handle guide plate	1
4	83.061100.01.1	Recoil Starter Cover (Black)	1
5	21.061005.00	Recoil Starter Spring	1
6	2.10.001.1	Rope Ø4x1570 (Black)	1
7	21.061001.01	Recoil Starter Reel	1
8	45.060003.00	Ratchet Spring	2
9	45.060002.00	Steel Starter Ratchet	2
10	45.060009.00	Ratchet Spring Guide	1
11	45.060007.00	Ratchet Guide	1
12	45.060008.00	Ratchet Guide Screw	1
13	2.05.050	Wire Clamp 100	2
14	1.16674.0618	Flange Bolt M6 x 18	4
15	63.080100.01	Fan Cover	1
16	63.061000.00	Recoil Assembly	1
17	63.090004.02	Air Cleaner Tube	1
18	63.090003.00	Breather Pipe Joint	1
19	63.090005.00	Air Cleaner Tube Pinch	1
20	1.5789.0610	Flange Bolt M6 x 10	7
21	63.060001.00	Starter Pulley	1
22	1.16674.0616	Flange Bolt M6 x 10	7
23	182.060002.00	Connecting Base	1
24	63.080001.00	Cooling Fan	1
25	2.02.006	Nut M14 x 1.5	1
26	63.191100.01	Rotor	1
27	63.191200.05	Stator Component	1
28	2.11.001	Oil Seal Ø25 x Ø41.3 x 6	1
29	62.200410.00	Rear Cover Protector Rotary Knob	1
30	182.030006.00	Pinch	1

#	Part Number	Description	Qty.
31	1.5789.0608	Flange Bolt M6 x 08	1
32	63.030006.01	Pinch	1
33	63.030032.00	Wire Sheath	1
34	63.030100.00.1	Crankcase	1
35	21.127000.02	Oil Level Sensor	1
36	63.091200.00	Air Cleaner Cover	1
37	27.050200.00	Connecting Rod	1
38	27.050100.04	Crankshaft	1
39	24.030008.00	Crankcase Cover Gasket	1
40	27.030013.00	Long Seal Crankcase Cover Strip	1
41	27.030013.01	Crankcase Cover Seal Strip Short	1
42	63.030007.00	Crankcase Cover	1
43	63.031000.00.2	Oil Dipstick Assembly	1
44	1.5789.0832	Flange Bolt M8 x 32	6
45	2.08.182	Flange Bolt M6 x 20	2
46	63.123000.01	Silicon Rubber Ignition Coil	1
47	63.091003.00	Air Cleaner Element	1
48	63.080300.00	Air Guide	1
49	2.03.016	Drain Bolt Washer Ø10 x Ø16 x 1.5	1
50	83.032000.00	Oil Drain Hose	1
51	2.06.013	Clamp	1
52	45.030200.00	Support	1
53	1.6177.06	Flange Nut M6	2
54	24.130004.20	Air Cleaner Gasket	2
55	63.130200.01	Choker Rod Support	1
56	63.130000.03	Carburetor Assembly See Figure D	1
57	22.130003.00	Carburetor Gasket	1
58	63.130001.00	Carburetor Insulator	1
59	24.130002.00	Insulator Gasket	1
60	25.040013.00	Valve Lifter	2

#	Part Number	Description	Qty.
61	2.04.001	Dowel Pin Ø9 x 14	2
62	27.041000.00	Camshaft	1
63	2.14.012	Woodruff Key 4 x 7.5 x 19	1
64	1.276.6205.9	Bearing 6205	2
65	27.050005.00	Piston	1
66	23.050003.00	Piston Pin	1
67	2.09.001	Circlip Ø18 x Ø1	2
68	27.050303.00	Oil Ring	1
69	27.050302.00	Second Piston Ring	1
70	27.050301.00	First Piston Ring	1
71	27.030009.01	Cylinder Head Gasket	1
72	2.04.003	Dowel Pin Ø10 x 14	2
73	63.010000.00	Cylinder Head Assembly See Figure C	1
74	1.16674.0512.2	Flange Bolt M5 x 12	4
75	1.5789.0655	Flange Bolt M6 x 55	3
76	2.15.002(F6RTC)	Spark Plug F6RTC	1
77	1.5789.0865	Flange Bolt M8 x 65	3
78	63.091000.00	Air Cleaner Assembly	1
79	63.091100.00	Air Cleaner Base	1
80	63.080200.00	Cylinder Air Shroud	1
81	85.020002.00	Cylinder Head Cover Gasket	1
82	21.040008.00	Exhaust Valve Rotator	1
83	24.040202.00	Rocker Arm Shaft	1
84	22.040009.00	Rocker Arm	2
85	22.040012.00	Valve Adjustment Screw	2
86	21.040021.00	Lock Nut M6 x 0.5	2
87	1.97.1.06	Washer Ø6	2
88	1.6177.1.06	Flange Lock Nut M6	2
89	23.020001.03	Breather Tube	1
90	24.040201.00	Rocker Arm Retainer	1
91	85.030022.00	Ventilation Chamber Cover Gasket	1
92	24.040004.00	Push Rod Guide Plate	1

#	Part Number	Description	Qty.
93	27.040005.00	Push Rod	2
94	85.030300.00	Ventilation Chamber Cover Assembly	1
95	85.021101.00	Cylinder Head Cover	1
96	2.08.121	Flange Bolt M10 x 65	1
97	1.5789.0615	Flange Bolt M6 x 15	4
98	5.1280.011	15A Fuse	1

CYLINDER HEAD PARTS DIAGRAM

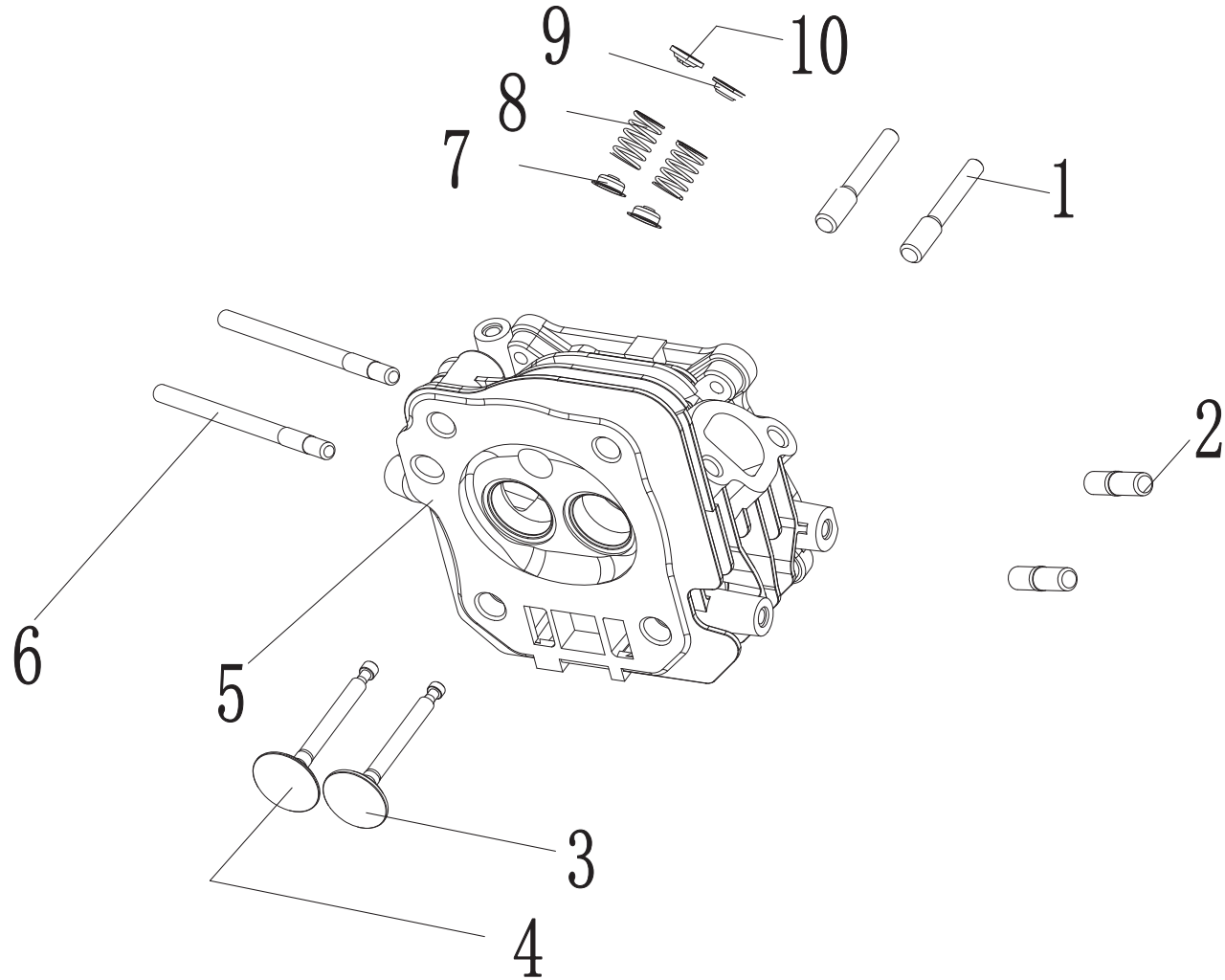


Figure C

CYLINDER HEAD PARTS LIST

#	Part Number	Description	Qty.
1	23.040010.00	Rocker Arm Bolt	2
2	2.01.010	Stud Bolt M8 x 35	2
3	23.040006.02	Exhaust Valve	1
4	23.040002.02	Intake Valve	1
5	26.010100.01	Cylinder Head (224cc)	1
6	2.01.049	Stud Bolt M6 x 99	2
7	23.040017.00	Steel Oil Seal Valve	2
8	21.040003.00	Valve Spring	2
9	21.040007.00	Exhaust Valve Spring Retainer	1
10	21.040001.00	Intake Valve Spring Retainer	1

CARBURETOR PARTS DIAGRAM

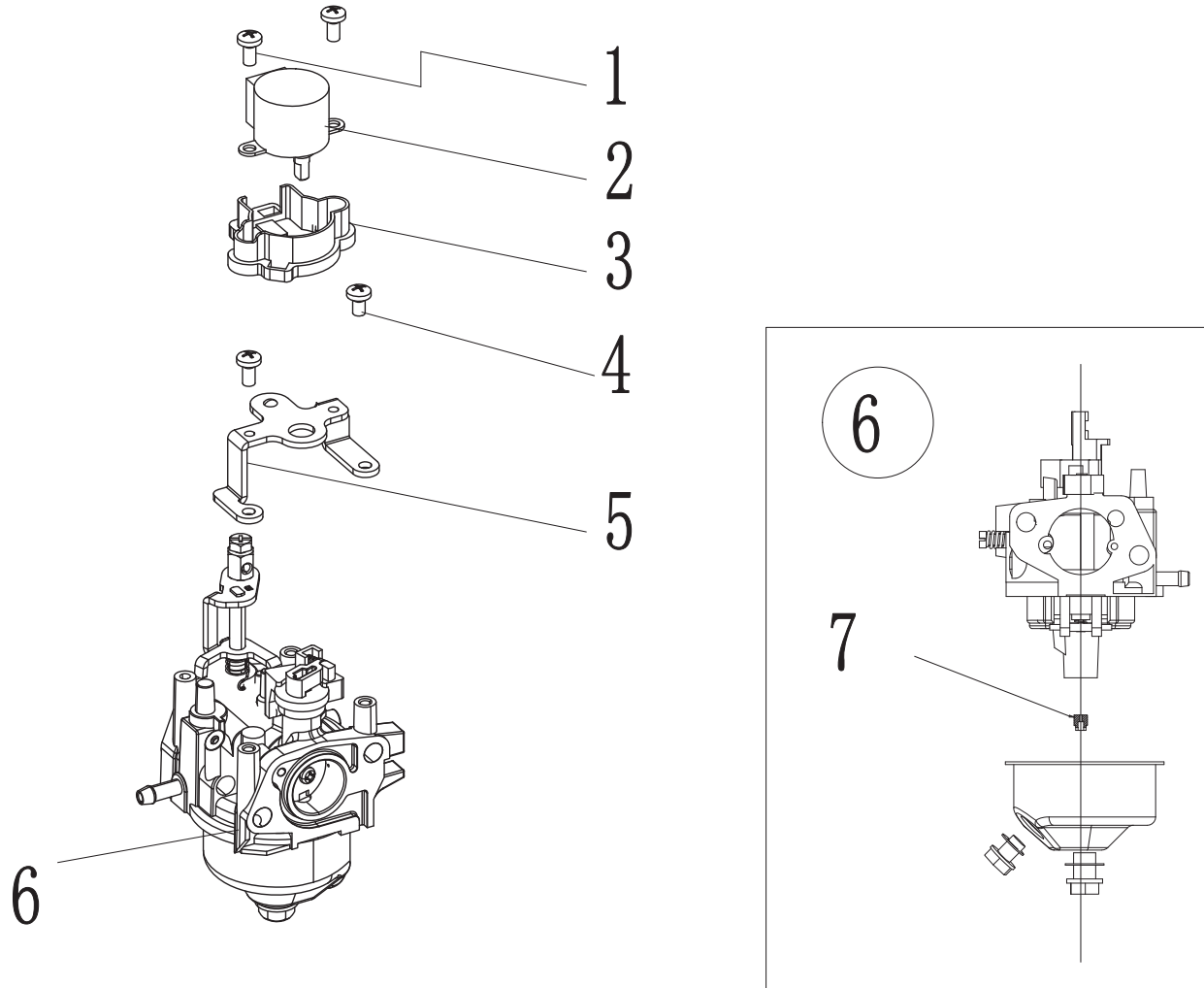


Figure D

CARBURETOR PARTS LIST

#	Part Number	Description	Qty.
1	1.823.0408.1	Screw M4 x 8	2
2	62.132200.00	Stepper Motor	1
3	85.132100.04	Stepper Motor Support	1
4	1.9074.3.0408	Screw M4 x 8	4
5	85.130005.04	Stepper Motor Support	1
6	63.131000.00	Carburetor	1
7	63.131017.00	Standard Main Jet	1
	63.131017.00.01	Altitude Main Jet	/

FUEL TANK PARTS DIAGRAM

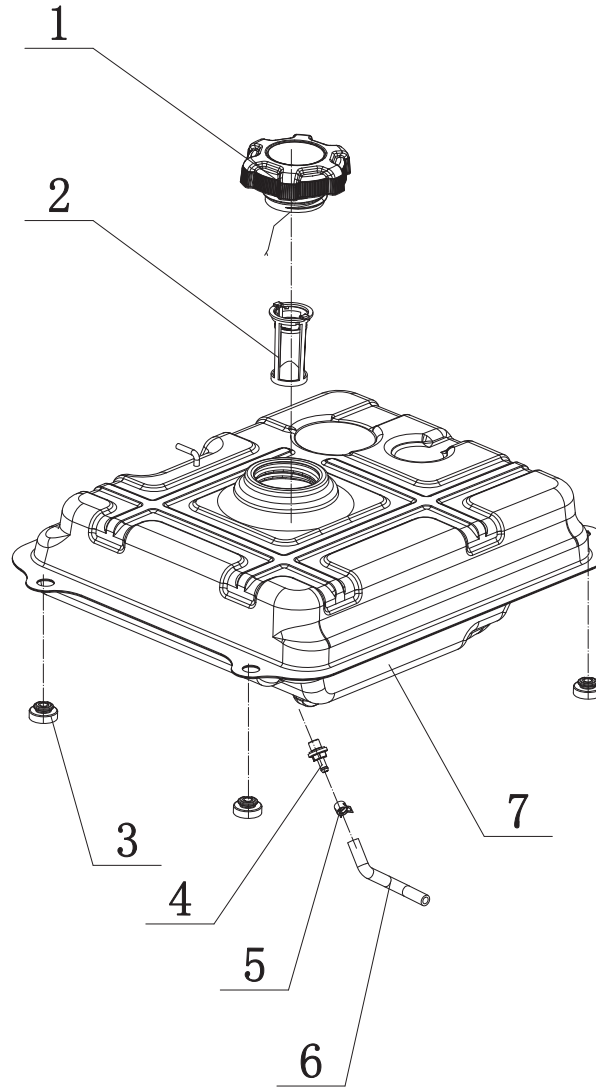


Figure F

FUEL TANK PARTS LIST

#	Part Number	Description	Qty.
1	122.070100.09	Fuel Tank Cap	1
2	63.070300.00	Fuel Pipe Fuel Filter	1
3	63.070015.00	Fuel Tank Mount Vibration	4
4	63.070600.00	Connect	1
5	2.06.018	Clamp Ø10.5 x b8	1
6	63.070011.00	Fuel Tank To Fuel Valve Fuel Pipe	1
7	63.071000.01.1	Fuel Tank	1

CONTROL PANEL PARTS DIAGRAM

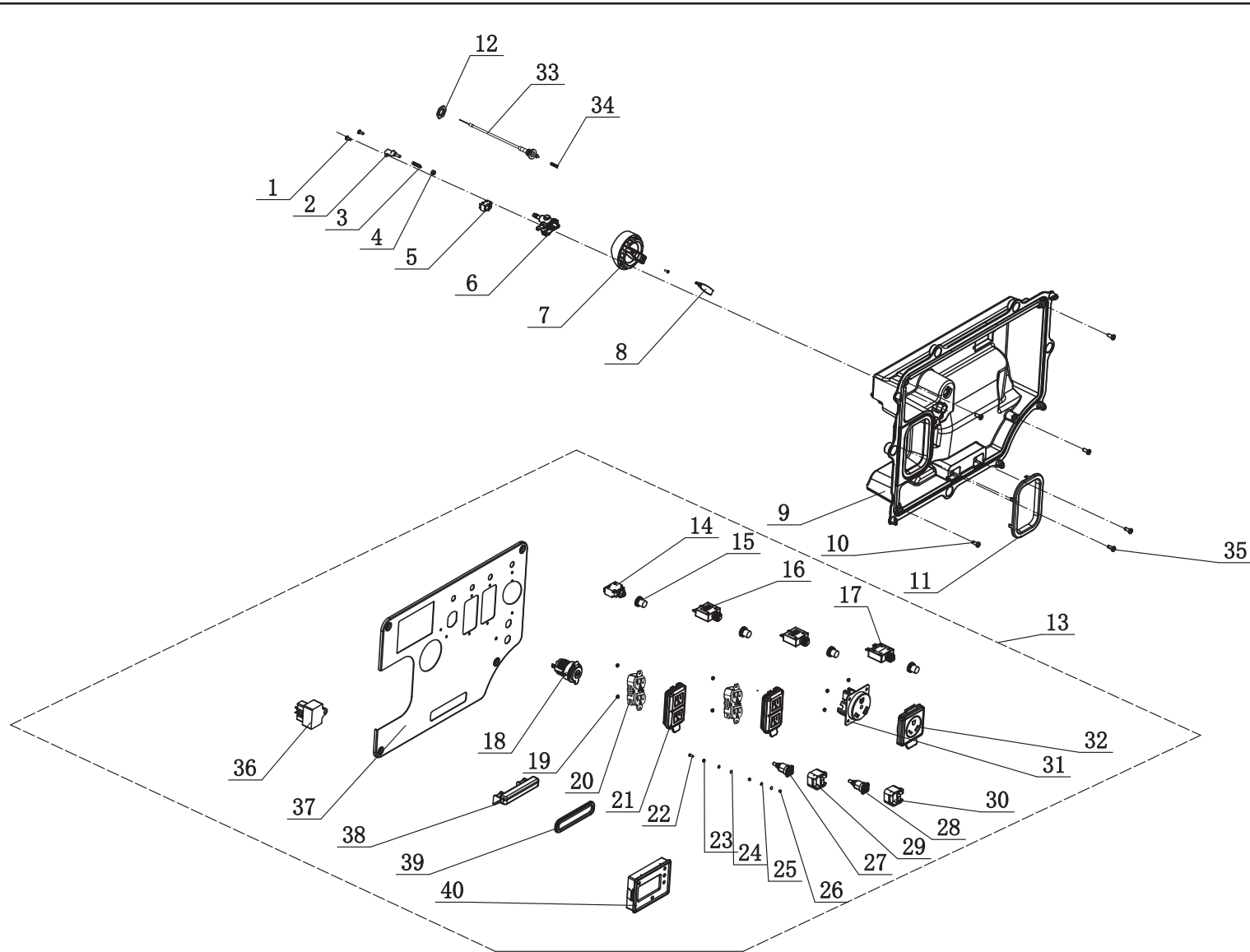


Figure G

CONTROL PANEL PARTS LIST

#	Part Number	Description	Qty.
1	1.823.0412.1	Screw M4×12	3
2	62.139006.00	Pressure Plate	1
3	62.139007.00	Steel Ball Spring	1
4	62.139008.00	Rotary Knob Ball Bearing	1
5	5.1050.006	Microswitch	1
6	63.070400.00	Fuel Valve	1
7	62.139001.00	Rotary Knob	1
8	62.139002.00.48	Rotary Knob Cover	1
9	63.210002.02	CSA Control Box	1
10	1.9074.4.0512.1	Screw/Washer Assembly M5 x 12 (Black)	4
11	63.200106.00	Front Cover Protector	1
12	2.02.036	Thin Hexnut M16 x 1.5	1
13	201351.21	Control Panel	1
14	5.1200.908	Push Button 8 Amp Circuit Breaker	1
15	5.1870.014	Push Button Circuit Breaker Cover	4
16	5.1210.920	Push Button 20 Amp Circuit Breaker	2
17	5.1210.930	Push Button 30 Amp Circuit Breaker	1
18	5.1110.005	Receptacle (DC.12V)	1
19	1.6177.1.04.1	Flange Lock Nut M4	8
20	5.1120.027	Duplex Receptacle 5-20R (CSA)	2
21	5.1870.025	Duplex Receptacle Cover (Receptacle 5-20R)	2
22	1.5783.0520.1	Bolt M5 x 20, Black	1
23	1.862.05	Toothed Lock Washer Ø5	1
24	1.93.05.1	Lock Washer Ø5 (Black)	2
25	1.97.1.05.1	Washer Ø5 (Black)	2
26	1.6170.05.1	Nut M5	2
27	83.210001.01.1	Connect Port (Black)	1
28	83.210001.01.3	Connect Port (Red)	1
29	5.1870.032	Connect Port Cover (125V/25A, Black)	1
30	5.1870.032.3	Connect Port Cover (125V/25A, Red)	1

#	Part Number	Description	Qty.
31	5.1120.036	Receptacle TT-30R	1
32	5.1870.021	Receptacle Cover TT-30R	1
33	63.130200.00	Pull Choke Assembly	1
34	62.130201.00	Pull Choke Spring	1
35	1.818.0514.1	Screw M5×14	2
36	5.1830.027	Indicator Light Module	1
37	63.01.2.48	Control Panel	1
38	63.214000.01	Control Panel Indicator Light Assembly	1
39	63.213004.00	Indicator Light Assembly Cover	1
40	63.210017.04	Multifunction Display(2N)	1

BASE PARTS DIAGRAM

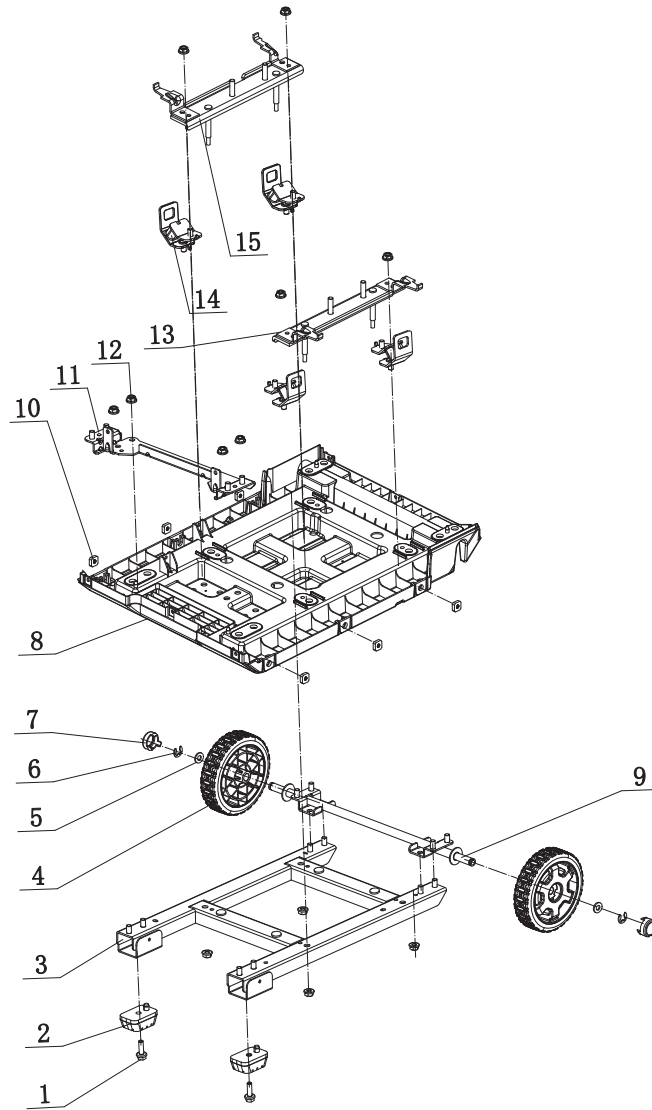


Figure H

BASE PARTS LIST

#	Part Number	Description	Qty.
1	1.5789.0615	Flange Bolt M6 x 15	2
2	63.201400.00	Rubber Pad	2
3	63.201100.00	Base Setting Component	1
4	83.201701.03.48	5.5 in. Wheel (Yellow)	2
5	1.848.12	Washer Ø12	2
6	1.894.1.12	Retaining Ring Ø12	2
7	83.201702.03.48	Wheel Plug (Yellow)	2
8	63.200601.00	Base Setting	1
9	63.201500.00	Axle	1
10	2.02.014	Square Nut M6	6
11	63.201600.02	Supporter	1
12	1.6177.1.08	Flange Lock Nut M8	12
13	63.201600.00	Right Supporter	1
14	63.201200.00	Motor Mount	4
15	63.201600.01	Left Supporter	1

WIRING DIAGRAM

