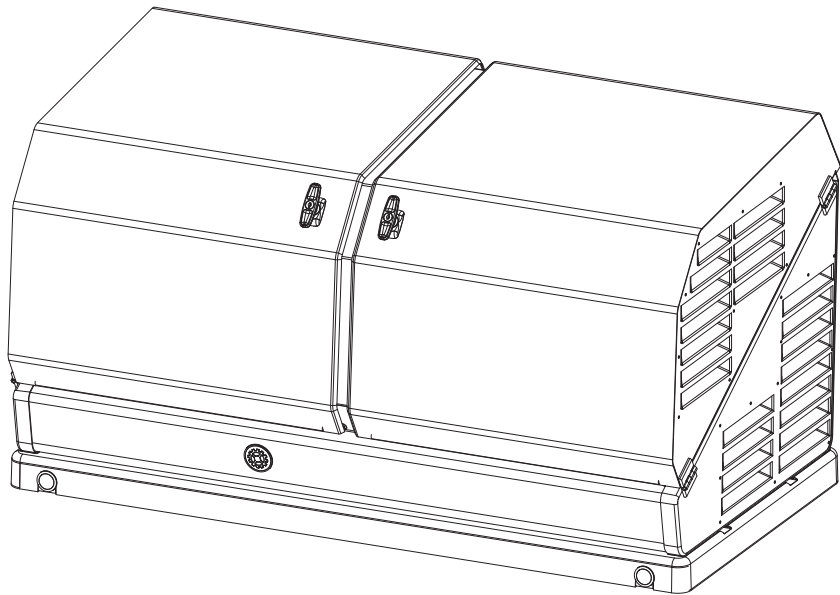




Champion Power Equipment, Inc.

MODEL #100304



PARTS INFORMATION

22-KW HOME STANDBY GENERATOR WITH AXIS CONTROLLER®

SERIAL NUMBER RANGE: ALL

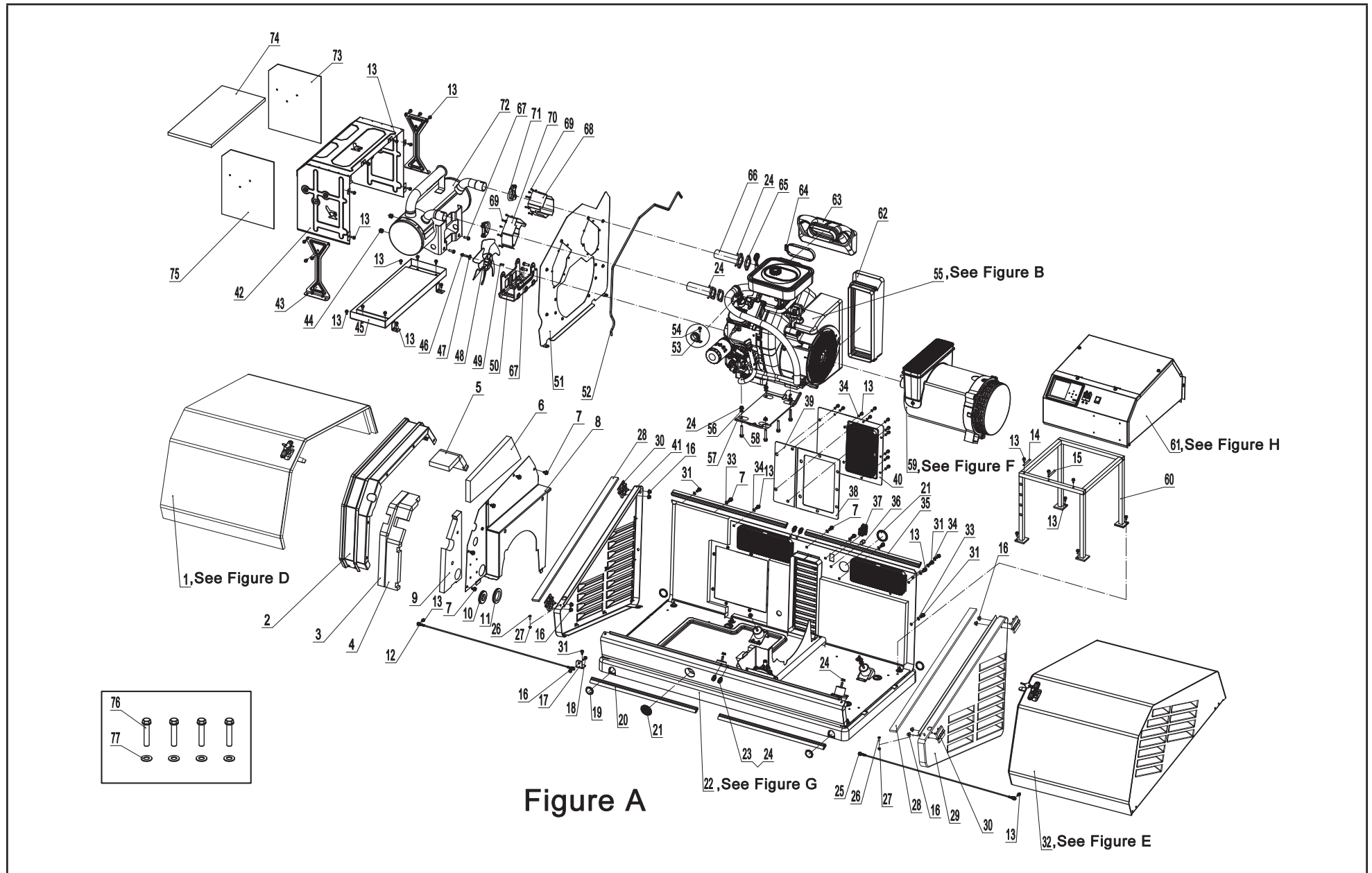


To order replacement parts please visit:
shop.championpowerequipment.com
or call **1-877-338-0999**.

TABLE OF CONTENTS

Generator Parts Diagram	3
Generator Parts List	4
Engine Parts Diagram	6
Engine Parts List	7
Cylinder Head 1 Parts Diagram	10
Cylinder Head 1 Parts List	11
Cylinder Head 2 Parts Diagram	12
Cylinder Head 2 Parts List	13
Top Left Cover Parts Diagram	14
Top Left Cover Parts List	15
Top Right Cover Parts Diagram	16
Top Right Cover Parts List	17
Alternator Parts Diagram	18
Alternator Parts List	19
Bottom Housing Parts Diagram	20
Bottom Housing Parts List	21
Control Panel Parts Diagram	22
Control Panel Parts List	23
Wiring Diagram	24

GENERATOR PARTS DIAGRAM



GENERATOR PARTS LIST

#	Part Number	Description	Qty.
1	165.200500.60.24	Top Cover Assembly, Left, Silk Grey, Flame Retardant and textured, See Figure D	1
2	165.201600.01.1	Gutter, Black	1
3	165.200021.15	Gutter, Left, Soundproof Sponge	1
4	165.200021.14	Gutter, Right, Soundproof Sponge	1
5	165.200021.16	Gutter, Top, Soundproof Sponge	1
6	165.200021.07	Dummy Plate, Top, Soundproof Sponge 1	1
7	1.16674.0812	Flange bolt, M8 x 12	10
8	165.200005.60.24	Dummy Plate, Top, Silk Grey, Flame Retardant and textured	1
9	165.200021.08	Dummy Plate, Top, Soundproof Sponge 2	1
10	165.200503.01	Grommet, Wire	1
11	163.210003.00	Grommet, Wire	1
12	165.200507.03	Curb Chain Assembly, Cover, 670 mm	1
13	1.5789.0615	Flange bolt, M6 x 15	45
14	2.05.049	Clip	1
15	2.05.050	Clip	1
16	1.6177.1.06	Flange Lock Nut M6	9
17	165.201503.00	Dead Plate	1
18	1.5789.0620	Flange bolt, M6 x 20	1
19	165.201801.00	Plastic Pallet, Plug	4
20	165.200109.01	Rubber Strip, 570 mm, Flame Retardant	2
21	165.200503.00	Front Cover, Rubber Plug	2
22	165.200601.60.24	Housing Bottom Assembly, See Figure G	1
23	2.08.204	Flange bolt, M8 x 16	4
24	1.6177.1.08	Flange Lock Nut M8	16
25	165.200507.04	Curb Chain Assembly, Cover, 720 mm	1
26	1.5783.0412	Flange bolt, M4 x 12	2
27	1.6177.1.04.2	Flange Lock Nut M4	2
28	161.200021.02	Seal Strip, Right/Left Cover, Flame Retardant	2

#	Part Number	Description	Qty.
29	165.200300.60.24	Right Cover Assembly, Silk Grey, Flame Retardant and textured	1
30	161.201900.00	Hinge	4
31	1.16674.0820	Flange bolt, M8 x 20	5
32	165.200500.61.24	Top Cover Assembly, Right, Silk Grey, Flame Retardant and textured, See Figure E	1
33	2.03.065	Washer, Ø8 × Ø17	5
34	2.03.064	Washer, Ø6 × Ø12	16
35	165.200109.02	Rubber Strip, 615 mm, Flame Retardant	2
36	5.1460.015	Indicator Light, 24 v	1
37	5.1040.015	Emergency Shutdown Switch	1
38	165.200021.01	Seal, Access Cover, Flame Retardant	1
39	165.200021.21	Seal, Access Cover, Flame Retardant	1
40	165.200402.60.24	Access Cover, Electric Cabinet, Silk Grey, Flame Retardant and textured	1
41	165.200200.60.24	Left Cover, Silk Grey, Flame Retardant and textured	1
42	165.101003.05.2	Muffler Housing Assembly	1
43	165.101004.00.2	Muffler Cover Support	2
44	2.02.041	Lock Nut, M10 x 1.5	2
45	165.101005.00.2	Muffler Tray	1
46	2.08.206	Flange bolt, M10 x 1.25 x 25	1
47	1.96.10	Washer, Ø10	1
48	999.080001.01	Cooling Fan, Al	1
49	2.14.027	Flat Key, 5×5×28	1
50	999.100100.00	Muffler Mount	1
51	165.200005.63.24	Firewall, Right, Silk Grey, FR and textured	1
52	163.200109.00	Rubber Strip, 1000 mm, FR	1
53	2.06.037	Clamp, Ø28	1
54	1.5789.0612	Flange bolt, M6 x 12	1
55	100298	Engine, See Figure B	1

#	Part Number	Description	Qty.
56	1.96.08	Washer, Ø8	2
57	165.201600.00	Supporter, Engine	1
58	1.5789.0850	Flange bolt, M8 x 50	4
59	165.191000.00	Motor combination, Cu, Ø270 x 180 mm, See Figure F	1
60	165.200004.63.24	Frame	1
61	100304.21	Control Panel Assembly, See Figure H	1
62	165.192300.00	Air Guide, Alternator	1
63	999.090004.00	Pipe, Air Cleaner	1
64	2.06.039	Clamp, 145 x 55	1
65	999.100001.00	Gasket, Exhaust	2
66	165.101002.00.2	Muffler Exhaust Pipe	2
67	1.5789.1022	Flange bolt, M10 x 22	4
68	165.080009.08.2	Right Exhaust Duct Air Hood	1
69	1.16674.0512.2	Flange bolt, M5 x 12	12
70	165.080009.07.2	Left Exhaust Duct Air Hood	1
71	165.101006.00	Resistant Black Paint Clamp, U-Type M8	2
72	165.101001.00	Muffler Body	1
73	165.200021.20	Muffler Housing Assembly, Right, Soundproof Sponge	1
74	165.200021.21	Muffler Housing Assembly, Top, Soundproof Sponge	1
75	165.200021.19	Muffler Housing Assembly, Left, Soundproof Sponge	1
76	2.08.210.6	Flange bolt, 3/8-16 x 50, Dacromet	4
77	2.03.050.6	Washer, Ø25 × Ø10.2 × 2.7, Dacromet	4

ENGINE PARTS DIAGRAM

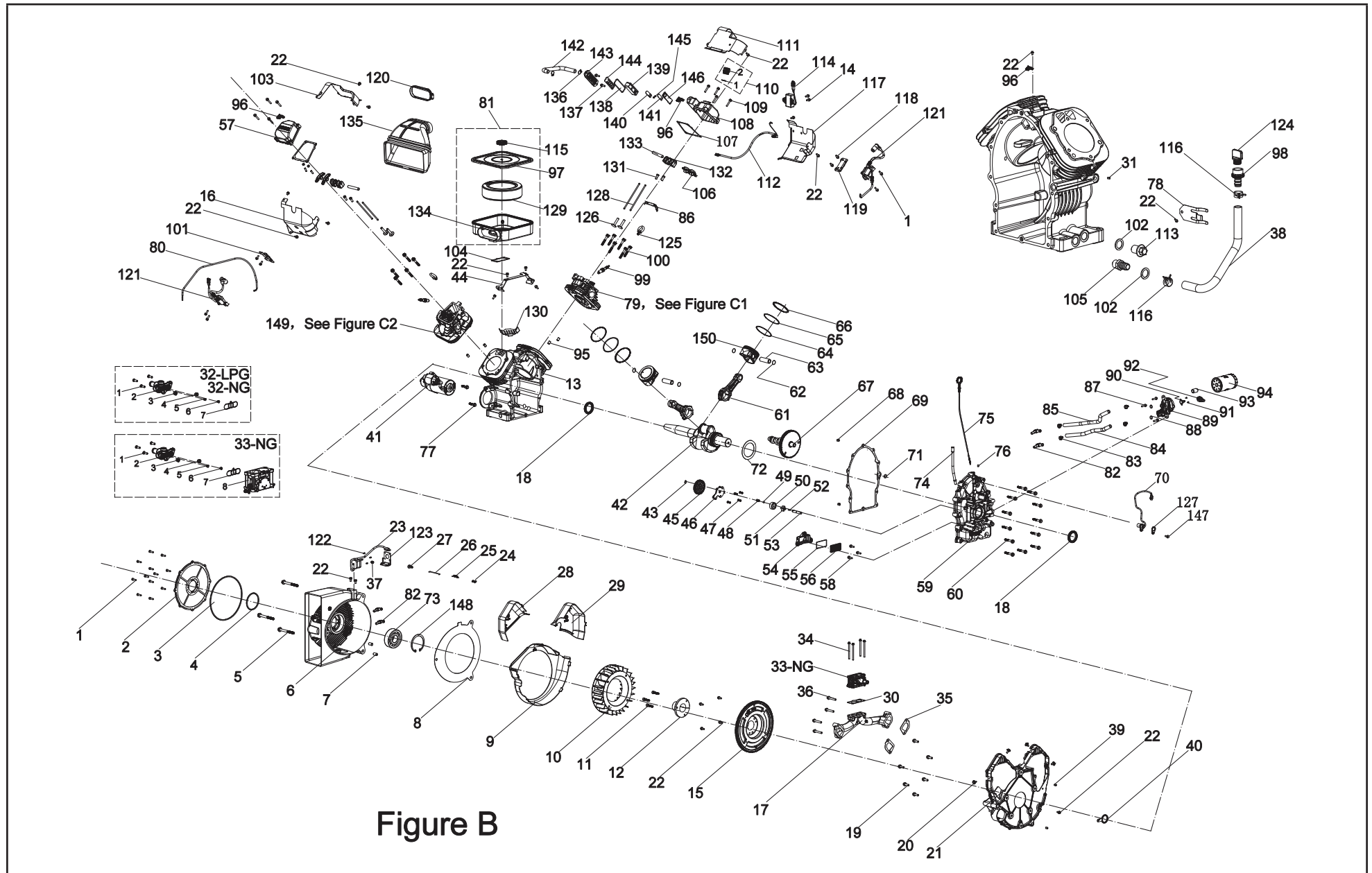


Figure B

ENGINE PARTS LIST

#	Part Number	Description	Qty.
1	1.6674.0620	Hex Small Flange Bolt, M6 x 20	16
2	165.150006.00	Oil Cooler Cover	1
3	2.07.032	Oil Cooler Cover Sealing ring Ø81 x Ø89 x 5	1
4	2.07.031	Oil Cooler Cover Sealing Ring Ø220 x Ø228 x 5	1
5	2.08.165	Hex Flange Bolt, M10 x 1.25-100	3
6	165.290007.00	Cover, Motor Front	1
7	2.04.004	Location Pin Ø12 x 20	2
8	165.190020.00	Motor Front End Cover Gasket	1
9	999.080100.00	Fan Hood, Assembly	1
10	999.080001.00	Fan, Cooling	1
11	1.5789.0825	Hexagon Socket Screw	3
12	999.120106.00	Flywheel Sleeve	1
13	999.030100.00	Crankcase Component	1
14	1.5789.0615	Hex Flange Bolt, M6 x 15	2
15	999.120100.00	Flywheel Assembly	1
16	999.080500.00	Air Guide, Outer	1
17	999.130012.00	Intake Manifold	1
18	2.11.029	Seal, Pto Oil, Ø45 x Ø62 x 8	2
19	1.5789.0825	Hex Flange Bolt, M8 x 25	6
20	2.08.083	Bolt, Hex Flange M6 x 12	4
21	999.080800.00	Cover, Fan, Screen&Cooler Ribs	1
22	1.5789.0612	Hex Flange Bolt, M6 x 12	21
23	999.132200.01	Stepping Motor	1
24	999.111007.00	Clip, Clevis	1
25	999.110005.01	Slender, Spring	1
26	999.110006.01	Governor Actuator linkage	1
27	999.111007.01	Clip, Clevis	1
28	999.080104.01	Small Cap (left)	1
29	999.080104.02	Small Cap (right)	1

#	Part Number	Description	Qty.	
30	999.130003.00	Gasket, Carburetor	1	
31	717.030026.00	Plug, 1/8 NPT Hexagon Socket	1	
32-NG	999.131600.01	Fuel Assembly NG	1	
NG	1	102416	Screw, Fuel Inlet Body Set M5 x 14	3
	2	102424	Body Assembly, Fuel Inlet	1
	3	102580	Main Jet - Right, #600	1
	4	102579	Main Jet - Left, #570	1
	5	102582	Slow Jet - Right, #220	1
	6	102582	Slow Jet - Left, #220	1
	7	100845	Gasket, Fuel Inlet Body	1
32-LPG	999.131600.00	Fuel Assembly LPG Green Dot	1	
LPG	1	102416	Screw, Fuel Inlet Body Set M5 x 14	3
	2	102424-G	Body Assembly, Fuel Inlet	1
	3	102581	Main Jet - Right, #500	1
	4	100929	Main Jet - Left, #490	1
	5	101032	Slow Jet - Right, #120	1
	6	101032	Slow Jet - Left, #120	1
	7	100845	Gasket, Fuel Inlet Body	1
33-NG	999.131000.00	Carburetor Assembly, NG	1	
NG	1	102416	Screw, Fuel Inlet Body Set M5 x 14	3
	2	102424	Body Assembly, Fuel Inlet	1
	3	102580	Main Jet - Right, #600	1
	4	102579	Main Jet - Left, #570	1
	5	102582	Slow Jet - Right, #220	1
	6	102582	Slow Jet - Left, #220	1
	7	100845	Gasket, Fuel Inlet Body	1
	8	999.131029.00	Carburetor Body	1
34	1.16674.0680	Hex Small Flange Bolt, M6 x 80	4	
35	999.130011.00	Gasket, Intake Manifold	2	
36	1.16674.0850	Hex Small Flange Bolt, M6 x 50	4	

#	Part Number	Description	Qty.
37	1.77.0506	Set screws, Hexagon socket	1
38	999.032100.00	Oil Line	1
39	2.04.005	Location Pin Ø8 x 10	2
40	999.152102.00	Oil Pipe, Holder	1
41	999.125000.00	Motor Assembly, 24V Solenoid Shift Starter	1
42	999.050100.00	Assembly, Crankshaft	1
43	1.894.1.9.3	Axial Retaining Ring	1
44	999.091102.00	Air Colander, Bracket	1
45	61.151200.00	Pump Assembly, Oil	1
46	999.151100.00	Oil Separater	1
47	1.6191.0616	Hexagon Socket Screw, M6 x 16	4
48	61.150004.00	Spring, Compression	1
49	1.308.9.5	Ball Ø9.5, Steel Check Valve	1
50	999.151001.00	Outer Rotor, Oil pump	1
51	999.151002.00	Inner Rotor, Oil pump	1
52	61.151004.00	Pin, Oil pump	1
53	999.151003.00	Axle, Oil pump	1
54	61.150302.00	Oil filter Screen,Foundation	1
55	50.021005.00	Rectangle, Seal Ring	1
56	999.150301.00	Oil Filter, Component	1
57	999.021001.01	Cylinder, Head Cover	1
58	1.5789.0620.2	Hex Flange Bolt, M6 x 20	3
59	999.030007.00	Cover, Crankcase	1
60	1.5789.0853	Hex Flange Bolt, M6 x 23	12
61	999.050200.00	Connecting Rod Assembly	2
62	2.09.013	Retainer, Piston Pin, Ø22.5 x Ø1	4
63	999.050003.00	Pin, Piston	2
64	999.050301.01	Ring, Top Piston	2
65	999.050302.01	Ring, Piston, 2nd	2
66	999.050303.01	Oil Ring	2
67	999.040100.00	Camshaft Assembly	1
68	2.04.009	Location Pin Ø10 x 10	2

#	Part Number	Description	Qty.
69	999.030008.00	Gasket, Crankcase Cover	1
70	999.122000.00	Trigger Assembly	1
71	2.07.023	O-ring	1
72	2.03.057	Washer, Drain Bolt, Ø46 x Ø63 x 0.5	1
73	1.276.6210.1	Bearing 6210	1
74	999.031200.00	Tube, Oil Dipstick Assembly	1
75	999.031000.00	Blade Assembly, Oil Dipstick	1
76	61.030011.00	Plug, Crankcase Cover	1
77	1.5789.0835	Hexagon Flange Bolt, M8 x 35	2
78	999.030200.00	Fixed Support	1
79	999.010100.02	Cylinder Head Assembly, See Figure C1	1
80	5.1900.111	Electric Wire	1
81	999.091000.00	Air Filter Assembly	1
82	165.150007.00	Joint	2
83	2.06.028	Hose Clamp, Ø17	4
84	999.152101.01	Oil Pipe 1	1
85	999.152101.02	Oil Pipe 2	1
86	999.080700.01	Support, Tube	1
87	1.16674.0625	Hexagon Small Flange Bolt, M6 x 25	3
88	2.07.004	O-ring, Seal Ring	2
89	999.150201.03	Base Assembly, Oil Filter With Oil Cooler and Oil Pressure Switch	1
90	5.1050.014	Temperature Control Switch, 140C	1
91	1.823.0306.1	Cross Recessed Pan Head Screw, M3 x 6	2
92	717.120007.01	Switch, Low Oil Shut-Down	1
93	61.150202.00	Connect Nut	1
94	717.153000.02	Oil Filter	1
95	2.04.003	Location Pin Ø10 x 14	4
96	2.05.050	Clamp, 100 mm	3
97	999.091200.00	Cover, Air Filter	1
98	999.032003.00.48	Rotary Union, Yellow	1
99	2.15.016	Spark Plug, K7RTC	2

#	Part Number	Description	Qty.
100	2.08.135	Hex Flange Bolt, M8 x 55	12
101	999.123002.01	Package Support, Ignition Coil	1
102	2.03.056	Washer, Drain Bolt, Ø20.5 x Ø29 x 2	2
103	999.080300.01	Air Guide, Inner	1
104	717.090005.00	Gasket, AC Assembly	1
105	999.032004.00	Copper Connection	1
106	717.040200.02	Follower, Camshaft	4
107	999.020002.00	Gasket, Rocker Cover	2
108	999.021001.02	Cylinder, Head Cover	1
109	1.5789.0625	Hex Flange Bolt, M6 x 35	8
110	102357	Cap, Oil Fill Assembly	1
1	2.07.001	Seal, Cap Oil Fill, Ø25.5 x Ø3.5	1
2	101813	Cap, Oil Fill	1
111	999.080300.02	Air Guide, Inner	1
112	999.126101.00	Ignition Signal Wire	1
113	2.08.146	Bolt, Drain, M20 x 1.5 x 25	1
114	999.126000.00	Ignition Assembly	1
115	999.091600.00	Retainer, AC Cover	1
116	2.06.047	Hose Clamp, Ø19 x b15	2
117	999.080600.00	Air Guide, Outer	1
118	1.16674.0615	Hex Small Flange Bolt, M6 x 15	4
119	999.123002.02	Package Support, Ignition Coil	1
120	2.06.039	Hose Clamps, 145 x 55 Rubber Protective Sleeve	1
121	101984	Ignition Coil Assembly	2
122	1.70.1.0306	Inner Hexagon Bolt, M3 x 6	4
123	999.130005.01	Support Plate, Stepper Motor	1
124	999.032005.00.48	Plug, Yellow	1
125	999.010003.00	Lifting Lug, M8	2
126	47.040004.00	Tappet	4
127	999.030006.00	Pressing Plate, Trigger	1
128	999.040005.00	Push Rod	4
129	999.091300.00	Air Filter, Filter Element	1

#	Part Number	Description	Qty.
130	999.080700.01	Support, V type	1
131	1.6191.0820	Internal Plum Bolt, M8 x 20	4
132	999.040201.00	Rocker, Holder	2
133	999.040016.00	Rocker, Shaft	2
134	999.091100.00	Air Filter Holder, Element	1
135	999.090004.00	Air Filter Tube	1
136	2.06.047	Hose Clamp, Ø19 x b15	2
137	1.5789.0620	Hex Flange Bolt, M6 x 20	2
138	50.021005.00	Rectangle, Seal Ring	1
139	50.021106.00	Spring plate holder	1
140	50.021104.00	Retainer, Reed Valve	1
141	50.021103.00	Reed Valve	1
142	999.020001.00	Tube, Breather	1
143	50.021002.00	Cover, Breather	1
144	50.021004.00	Ventilation Chamber, Clapboard	1
145	1.818.0306.3	Pan Head Screw, M3 x 6	2
146	999.021004.01	Respiratory Chamber, Clapboard	1
147	1.5789.0615	Hex Flange Bolt, M6 x 15	1
148	1.893.1.90	Circlip Ø90	1
149	999.010100.01	Cylinder Head Assembly, See Figure C2	1
150	999.050005.01	Piston	2

CYLINDER HEAD 1 PARTS DIAGRAM

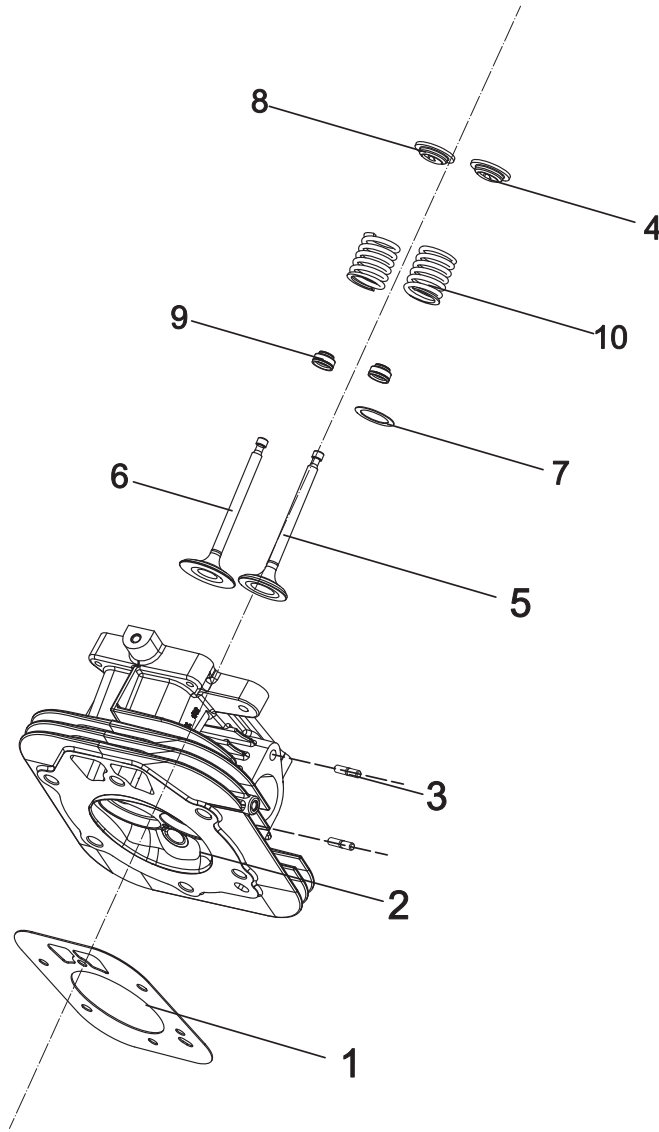


Figure C1

CYLINDER HEAD 1 PARTS LIST

#	Part Number	Description	Qty.
1	999.030009.00	Gasket Assembly, Cylinder Head	1
2	999.010100.02	Cylinder Head	1
3	2.01.010	Exhaust Stud Bolt M8 x 35	2
4	45.040001.00	Exhaust Valve Seat, Superior	1
5	999.040006.00	Exhaust Valve	1
6	999.040002.00	Intake Valve	1
7	717.040015.00	Valve Spring Seat, Below	1
8	45.040001.00	Intake Valve Seat, Superior	1
9	717.040017.00	Oil Seal, Valve Stem	2
10	45.040003.00	Valve Spring	2

CYLINDER HEAD 2 PARTS DIAGRAM

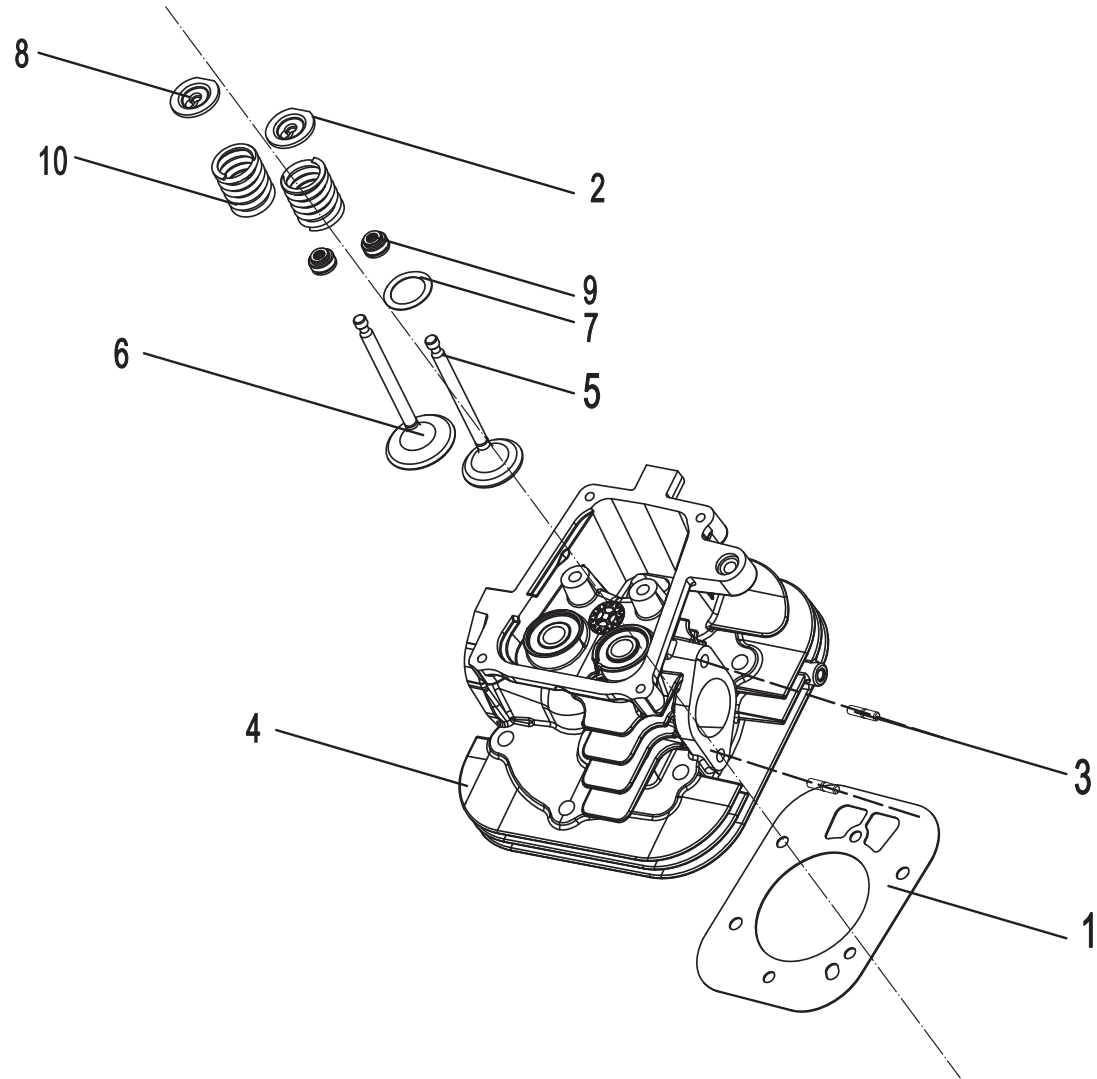


Figure C2

CYLINDER HEAD 2 PARTS LIST

#	Part Number	Description	Qty.
1	999.030009.00	Gasket Assembly, Cylinder Head	1
2	45.040001.00	Exhaust Valve Seat, Superior	1
3	2.01.010	Exhaust Stud Bolt M8 x 35	2
4	999.010100.01	Cylinder Head	1
5	999.040006.00	Exhaust Valve	1
6	999.040002.00	Intake Valve	1
7	717.040015.00	Valve Spring Seat, Below	1
8	45.040001.00	Intake Valve Seat, Superior	1
9	717.040017.00	Oil Seal, Valve Stem	2
10	45.040003.00	Valve Spring	2

TOP LEFT COVER PARTS DIAGRAM

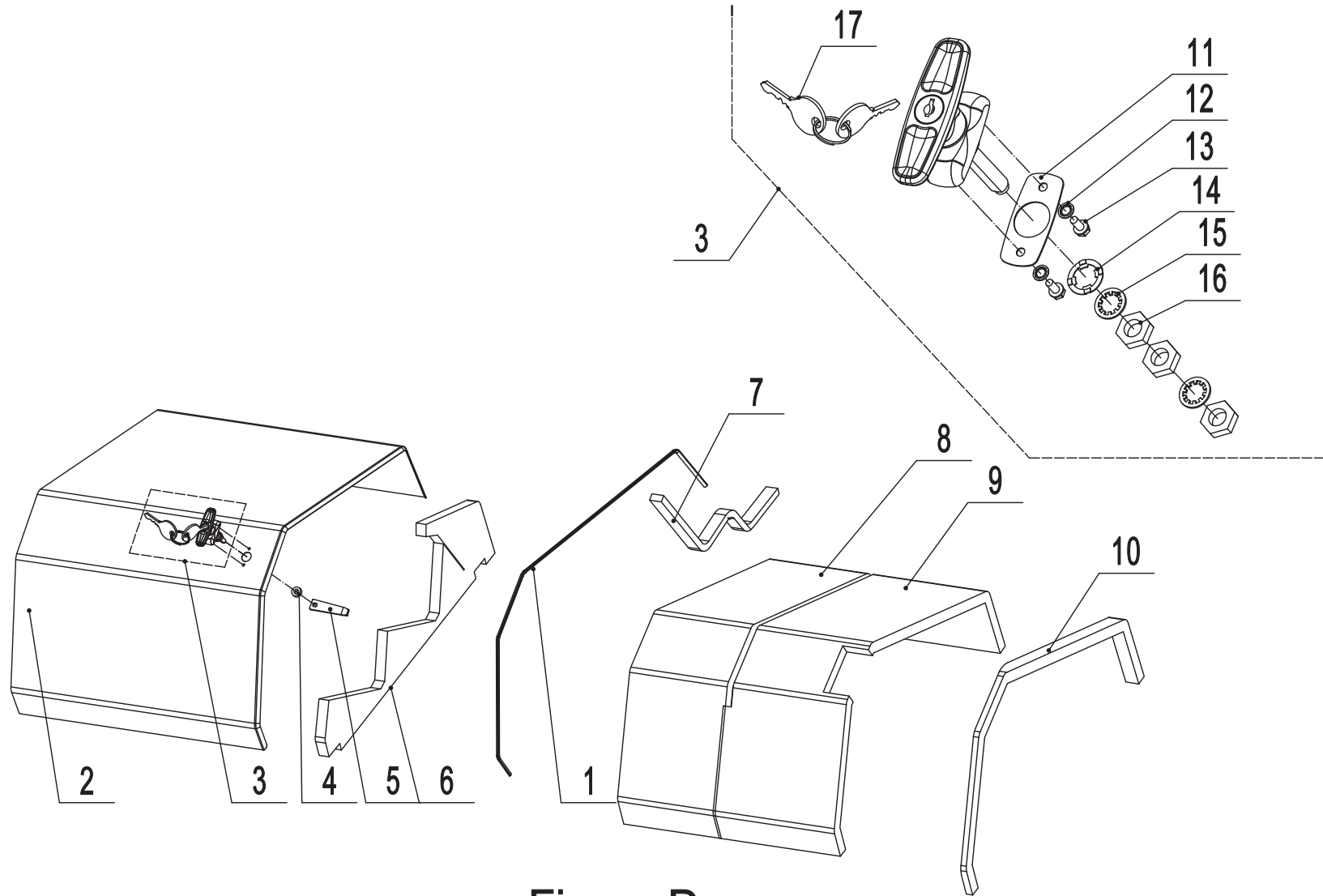


Figure D

TOP LEFT COVER PARTS LIST

#	Part Number	Description	Qty.
1	161.200109.00	Seal Strip, 20 x 1152 x 8mm, Gutter	1
2	165.200500.60.24	Top Cover, Left	1
3	161.200110.00	Handle Assembly	1
4	2.13.027	Bushing, Ø10.5×Ø16×7.5	1
5	161.201004.00	Locking Plate	1
6	163.200021.06	Acoustic Panel, Left Cover, Side	1
7	163.200021.09	Seal Strip, Top Cover, 32 x 760 x 15mm	1
8	165.200021.12	Acoustic Panel, Cover, Top	1
9	165.200021.13	Acoustic Panel, Left Cover, Top	1
10	161.200021.02	Seal, Gutter	1
11	161.200110.00.07	Rubber Gasket, Handle	1
12	161.200110.00.02	Locking Washer, Ø5	2
13	161.200110.00.03	Bolt M5 x 12	2
14	161.200110.00.04	Wave Washer Ø10	1
15	161.200110.00.05	Locking Washer Ø10	2
16	161.200110.00.06	Nut, M10	3
17	161.200110.00.01	Key, Handle	1

TOP RIGHT COVER PARTS DIAGRAM

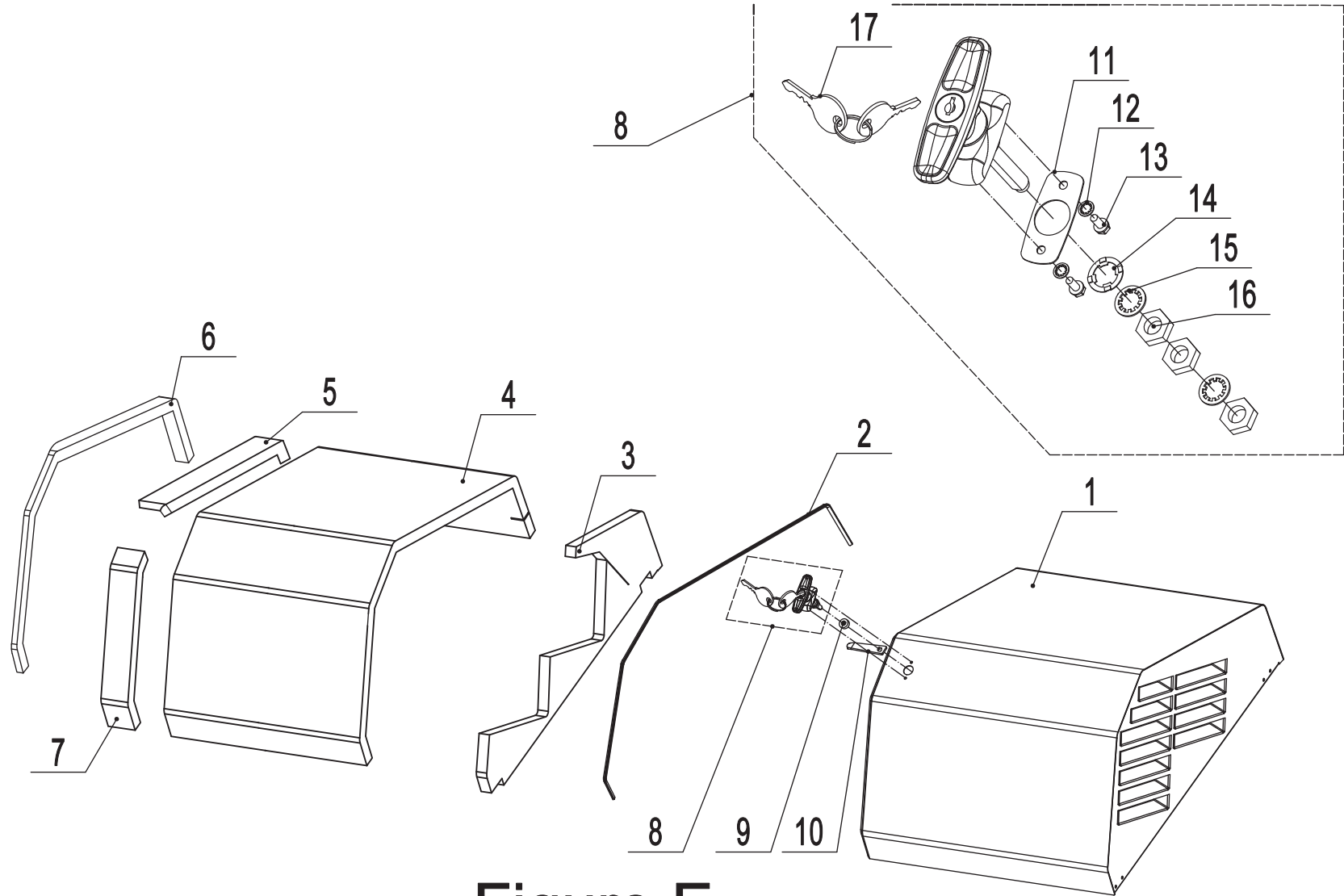


Figure E

TOP RIGHT COVER PARTS LIST

#	Part Number	Description	Qty.
1	165.200500.61.24	Top Cover Assembly, Right	1
2	161.200109.00	Seal Strip, 20 x 1152 x 8mm, Gutter	1
3	163.200021.07	Acoustic Panel, Right Cover, Side	1
4	165.200021.11	Acoustic Panel, Cover, Top	1
5	165.200021.17	Acoustic Panel, Cover, Top, Handle	1
6	161.200021.02	Seal, Gutter	1
7	165.200021.18	Acoustic Panel, Cover, Top, Handle	1
8	161.200110.00	Handle Assembly	1
9	2.13.027	Bushing, Ø10.5 x Ø16 x 7.5	1
10	161.201004.00	Locking Plate	1
11	161.200110.00.07	Rubber Gasket, Handle	1
12	161.200110.00.02	Locking Washer, Ø5	2
13	161.200110.00.03	Bolt, M5 x 12	2
14	161.200110.00.04	Wave Washer, Ø10	1
15	161.200110.00.05	Locking Washer, Ø10	2
16	161.200110.00.06	Nut, M10	3
17	161.200110.00.01	Key, Handle	1

ALTERNATOR PARTS DIAGRAM

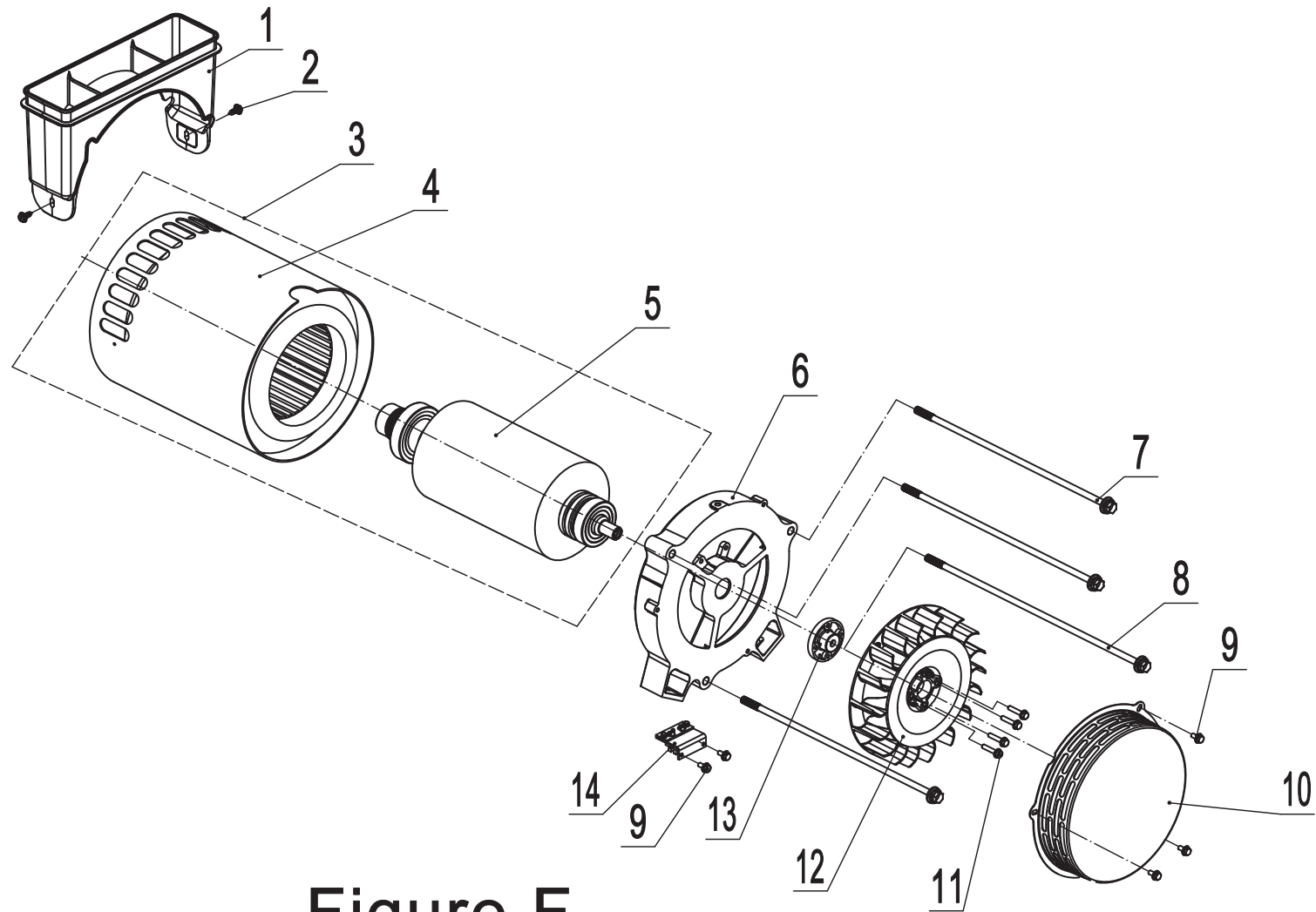


Figure F

ALTERNATOR PARTS LIST

#	Part Number	Description	Qty.
1	165.192100.01	Air Hood Bracket Assembly Motor	1
2	2.08.068.2	Flange Bolt M5 x 13	2
3	165.191000.00	Motor Assembly,Cu, Ø270 x 180 mm	1
4	165.191200.00	Stator Assembly, Cu, Ø270 x 180 mm	1
5	165.191100.00	Rotor Assembly, Cu, Ø270 x 180 mm	1
6	165.190002.00	End Housing	1
7	2.08.142	Flange Bolt M10 x 400	3
8	2.08.141	Flange Bolt M10 x 452	1
9	1.5789.0612	Flange Bolt M6 x 12	5
10	165.190003.00.2	End Cover, Generator, Black	1
11	1.5789.0629	Flange Bolt M6 x 29	4
12	165.190001.00	Motor Fan	1
13	164.190019.00	Motor Fan Coupling	1
14	171.190300.01	Carbon Brush Assembly	1

BOTTOM HOUSING PARTS DIAGRAM

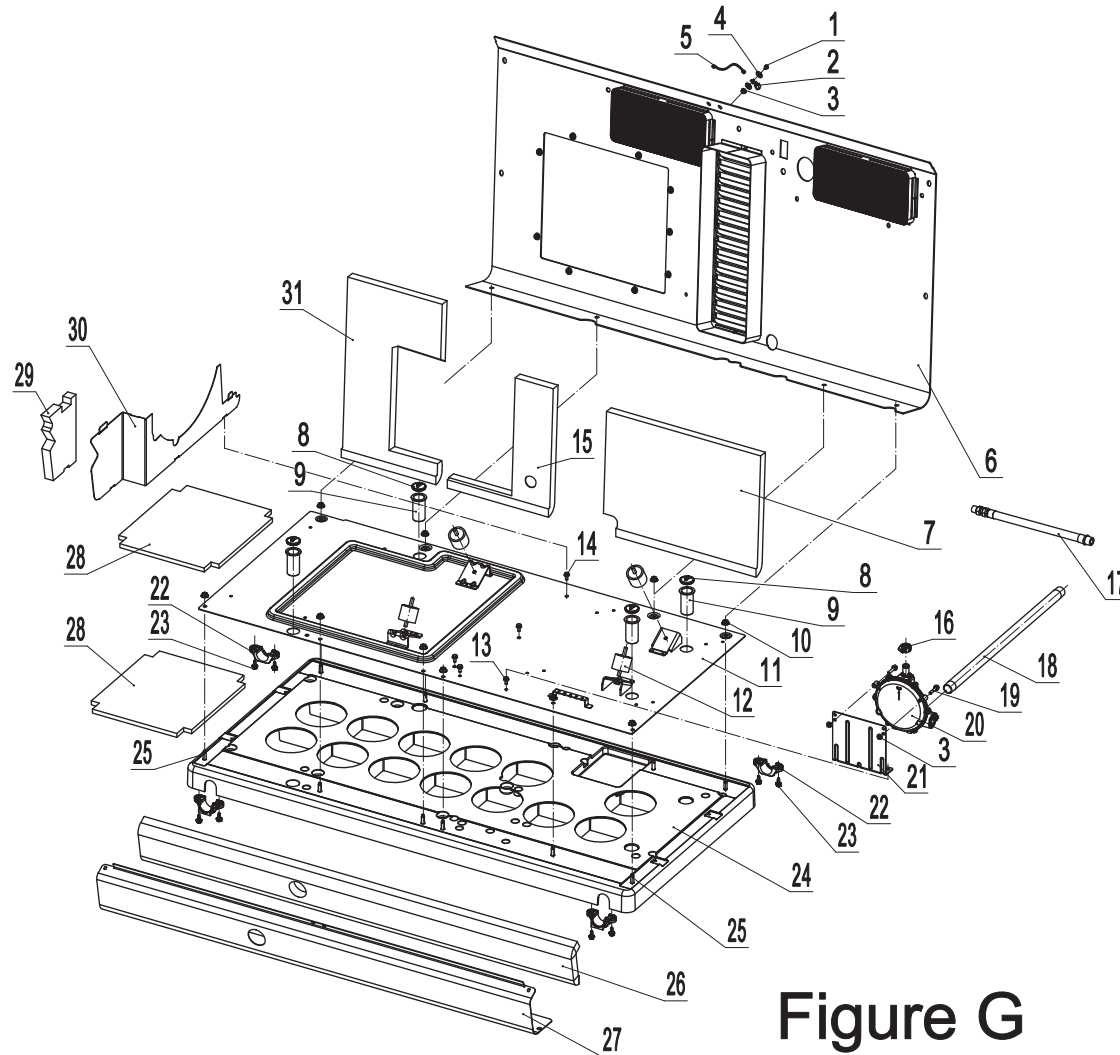


Figure G

BOTTOM HOUSING PARTS LIST

#	Part Number	Description	Qty.
1	1.5789.0625	Flange bolt, M6 x 25	1
2	5.1560.000	Ground Wire Terminal, Ø6, UL	1
3	1.6177.1.06	Flange Lock Nut M6	3
4	1.862.06	Toothed Lock Washer, Ø6	1
5	5.1900.185	Grounding Line 6# 155 mm	1
6	165.200401.60.24	Rear Cover, Silk Grey, Flame Retardant and Textured	1
7	165.200021.05	Acoustic Panel, Rear Center Chamber, Flame Retardant Right	1
8	165.200608.00	Hurricane Tie Down Cap	4
9	165.201804.00	Hurricane Tie Down Bushing	4
10	1.6177.1.08	Flange Lock Nut M10	10
11	165.200601.60.24	Base Center, Silk Grey, Flame Retardant and textured	1
12	165.200605.00	Motor Mount M8	4
13	1.5789.0612	Flange bolt, M6 x 12	2
14	1.16674.0812	Flange bolt, M8 x 12	3
15	165.200021.04	Acoustic Panel, Rear Center Chamber, Flame Retardant Middle	1
16	2.06.052	Clamp, Ø32	1
17	163.130021.01	Flexible Fuel Hose, NPT 3/4	1
18	165.130021.00	Galvanized Pipe, NPT 3/4, 590mm LONG	1
19	1.5789.0625	Flange bolt, M6 x 25	2
20	165.136000.00	Pressure Reducing Valve, LPG/NG	1
21	161.200018.00	Supportor, Pressure Reducing Valve	1
22	165.201802.00	Tray Non Slip Cover	4
23	2.08.102.1	High And Low Teeth Tapping Screws, M6 x 13, Black	8
24	165.201800.00	Plastic Pallet, PP	1
25	1.5783.0825	Bolt, M8 x 25	10
26	165.200021.06	Foams, Front Cover, Flame Retardant	1

#	Part Number	Description	Qty.
27	165.200101.60.24	Front Cover, Silk Grey, Flame Retardant and Textured	1
28	165.200021.10	Foams, Heat Insulation, Flame Retardant	2
29	165.200021.09	Lower Diaphragm Sponge	1
30	165.200005.60.24	Firewall, Left, Silk Grey, Flame Retardant and Textured	1
31	165.200021.03	Acoustic Panel, Rear Center Chamber, Flame Retardant Left	1

CONTROL PANEL PARTS DIAGRAM

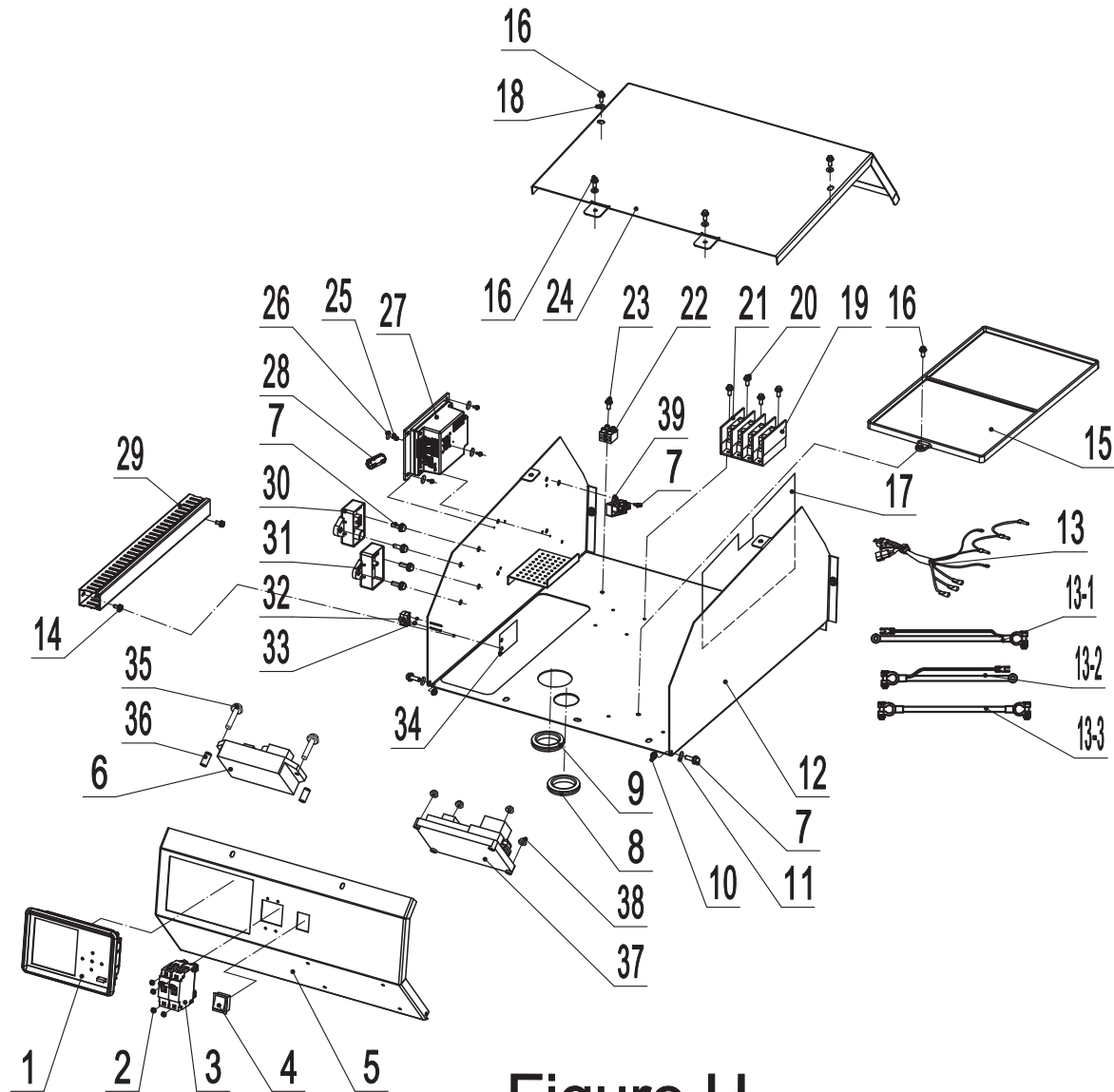


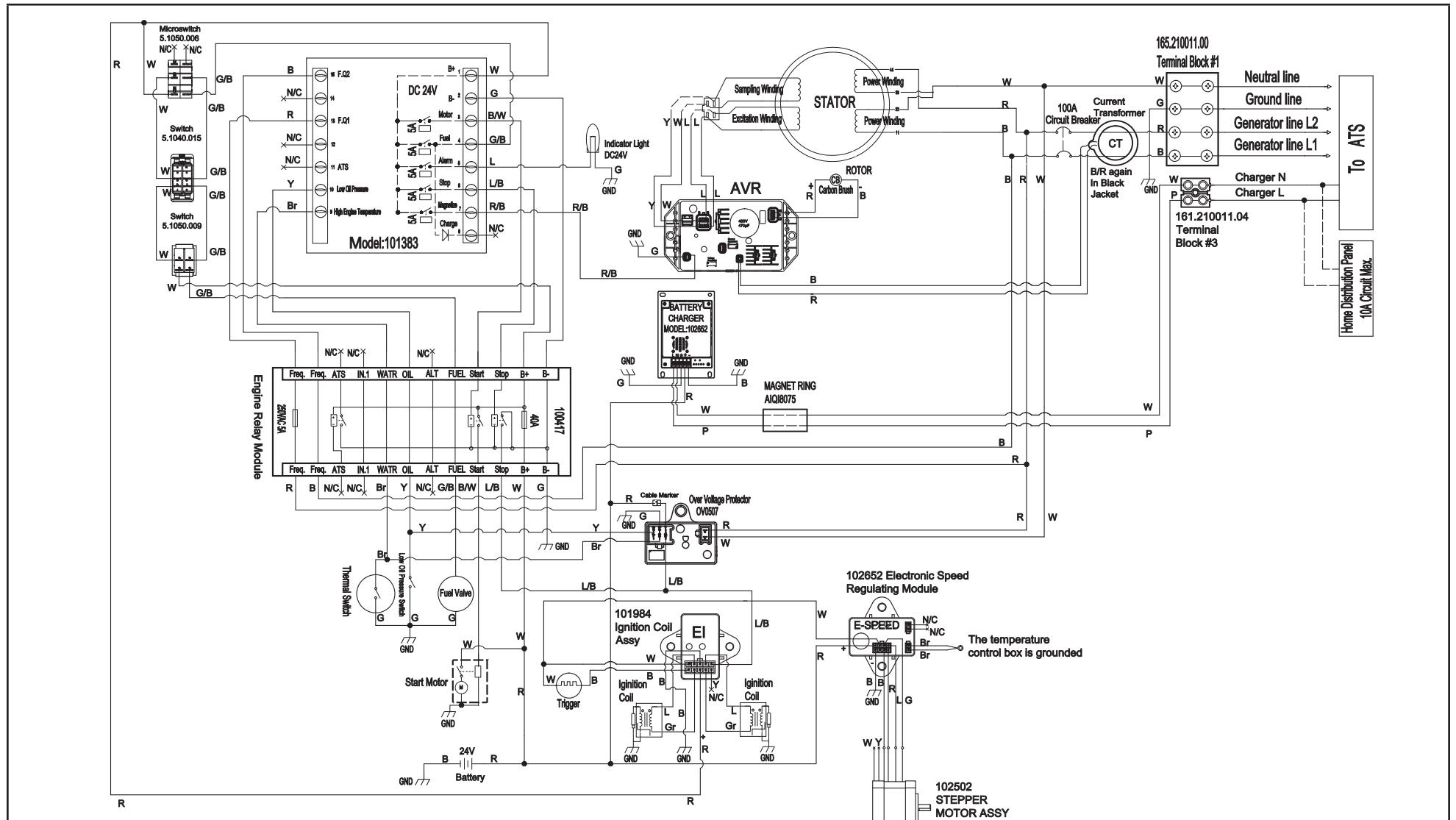
Figure H

CONTROL PANEL PARTS LIST

#	Part Number	Description	Qty.
1	101383	Axis Controller	1
2	1.9074.4.0306.2	Screw/Washer Assembly M3 x 6	4
3	5.1241.9100.2	100Amp Circuit Breaker, Double Pole, UL	1
4	5.1050.016	Switch, UL, Black	1
5	165.200004.61.24	Cover, Electric Cabinet, Silk Grey, Flame Retardant and textured	1
6	165.190200.01	AVR, TT916-406	1
7	1.5789.0615	Flange Bolt, M6 x 15	7
8	165.200503.01	Grommet, Hose	1
9	163.210003.00	Grommet, Wire	1
10	1.6182.06	Lock Nut, M6	2
11	2.03.060	Nylon Gasket	2
12	165.200004.62.24	Front Panel, Electric Cabinet	1
13	100304.21.10	Wire Assembly	1
13-1	5.1910.011	Battery Cable, Positive, Red	1
13-2	5.1910.012	Battery Cable, Negative, Black	1
13-3	5.1900.186	Battery Series Cable, Black	1
14	1.9074.4.0410.2	Bolt, M4 x 10	2
15	165.201803.00	Battery Tray	1
16	1.5789.0612	Flange Bolt, M6 x 12	5
17	165.210015.00	Armature Paper	1
18	2.03.064	Washer, Ø6 × Ø12	4
19	165.210011.01	Terminal Block, 100A	4
20	1.16674.0512.2	Flange Bolt M5 x 12	4
21	165.210011.02	Terminal Partition	1
22	161.210011.04	Terminal, Two Holes, Connector	1
23	1.818.0420.1	Screw, M4 x 20	1
24	165.200004.60.24	Rear Panel Electric Cabinet	1
25	1.16674.0510	Bolt, M5 x 10	4
26	2.03.078	Washer, Ø5 × Ø12 × 1	4

#	Part Number	Description	Qty.
27	102652	Charger, Battery, 24V, 7A	1
28	165.210200.02	Magnet Ring, AIQ18075	1
29	165.216008.03	Groove Assembly, 400 mm	1
30	102562	Electronic Speed Regulating Module	1
31	999.126000.00	Igniter Assembly	1
32	5.1050.006	Microswitch, 2-Pole	1
33	1.6170.025	Nut, M2.5	2
34	165.210015.01	Armature Paper	1
35	1.5789.0525	Flange Bolt, M5 x 25	2
36	2.13.034	Bush	2
37	100417	Relay Module, Engine	1
38	1.6177.1.03.1	Lock Nut M3, Flange, Black	4
39	5.1810.014	Over Voltage Protector, OV0507	1

WIRING DIAGRAM



R	Red	G	Green	O/B	Orange/Black	N/C	Not Connect
B	Black	O	Orange	G/B	Green/Black	Gr	Grey
Br	Brown	W	White	R/B	Red/Black		
Y	Yellow	P	Pink	B/W	Black/White		
L	Blue	Pu	Purple	L/B	Blue/Black		

Switches Table

5.1050.006	Double Pole Microswitch
5.1040.015	Emergency Stop Switch
5.1050.009	Switch, UL, Black