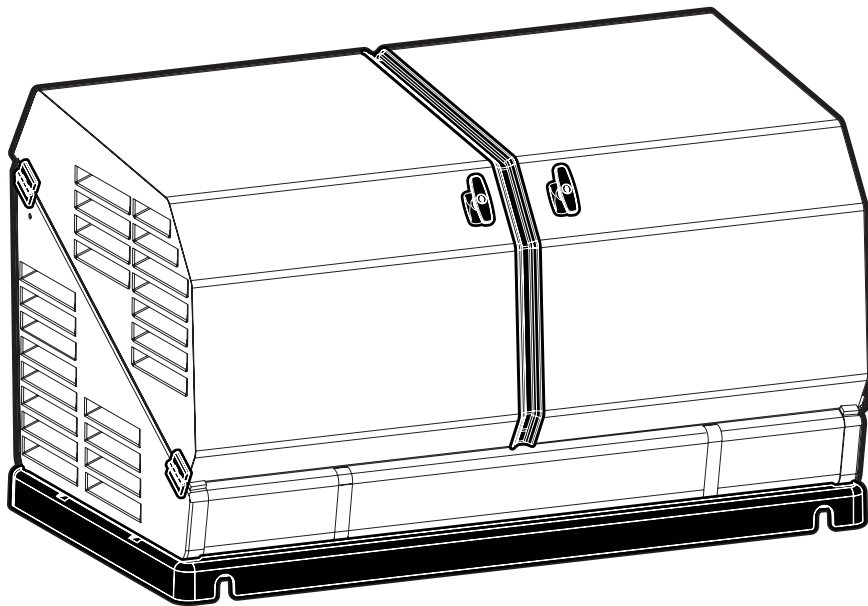




Champion Power Equipment, Inc., Santa Fe Springs, CA USA

MODEL #100199



PARTS INFORMATION

8.5 KW HOME STANDBY GENERATOR

SERIAL NUMBER RANGE: ALL

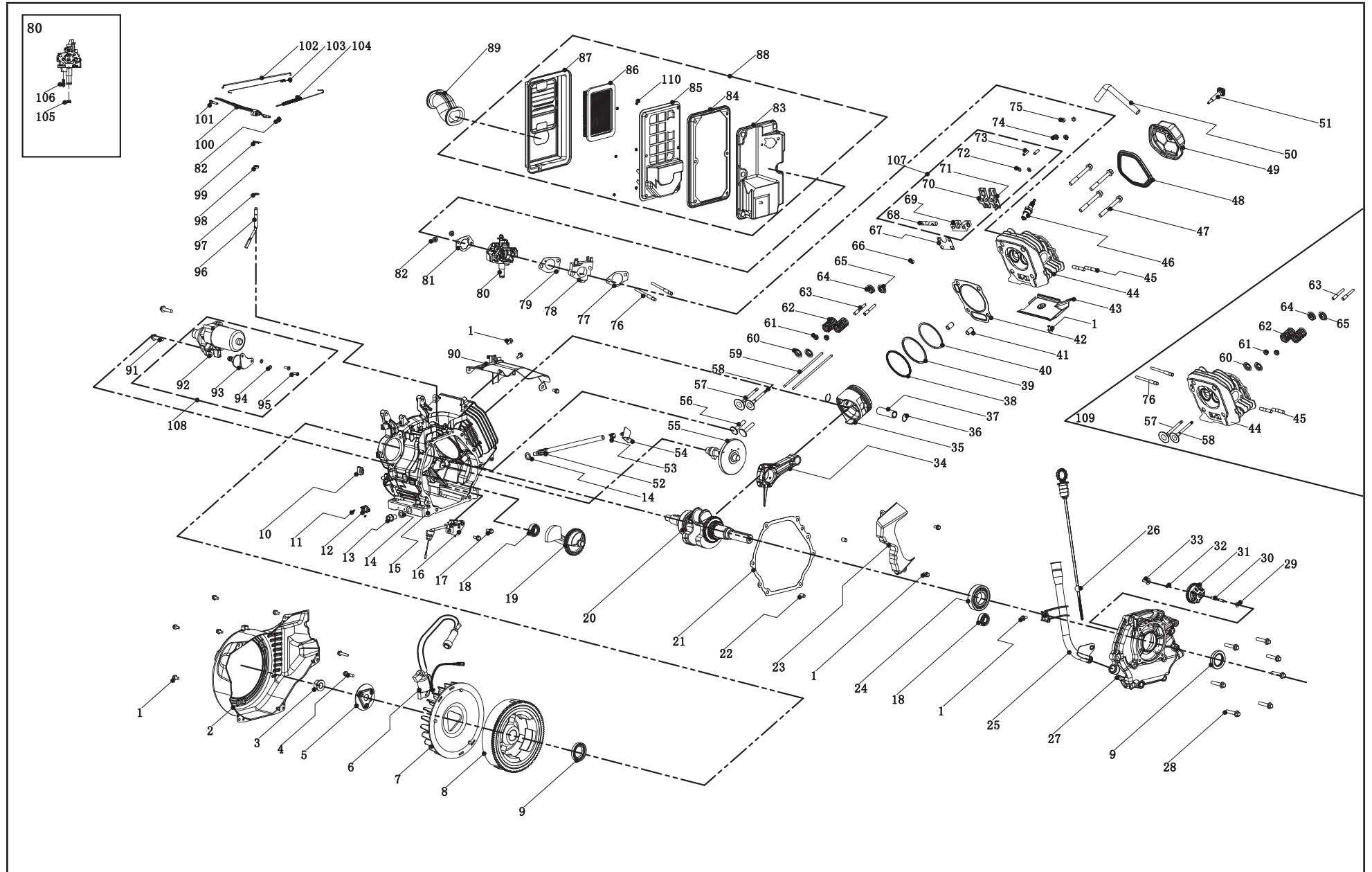


To order replacement parts please visit:
shop.championpowerequipment.com
or call **1-877-338-0999**.

TABLE OF CONTENTS

Engine Parts Diagram	3
Engine Parts List	4
Enclosure and Assemblies Parts Diagram	6
Enclosure and Assemblies Parts List	7
Top Cover Assembly, Left Parts Diagram	9
Top Cover Assembly, Left Parts List	10
Top Cover Assembly, Right Parts Diagram	11
Top cover Assembly, Right Parts List	12
Alternator and Exhaust System Parts Diagram	13
Alternator and Exhaust System Parts List	14
Control Panel Parts Diagram	15
Control Panel Parts List	16
Wiring Diagram	17

ENGINE PARTS DIAGRAM



ENGINE PARTS LIST

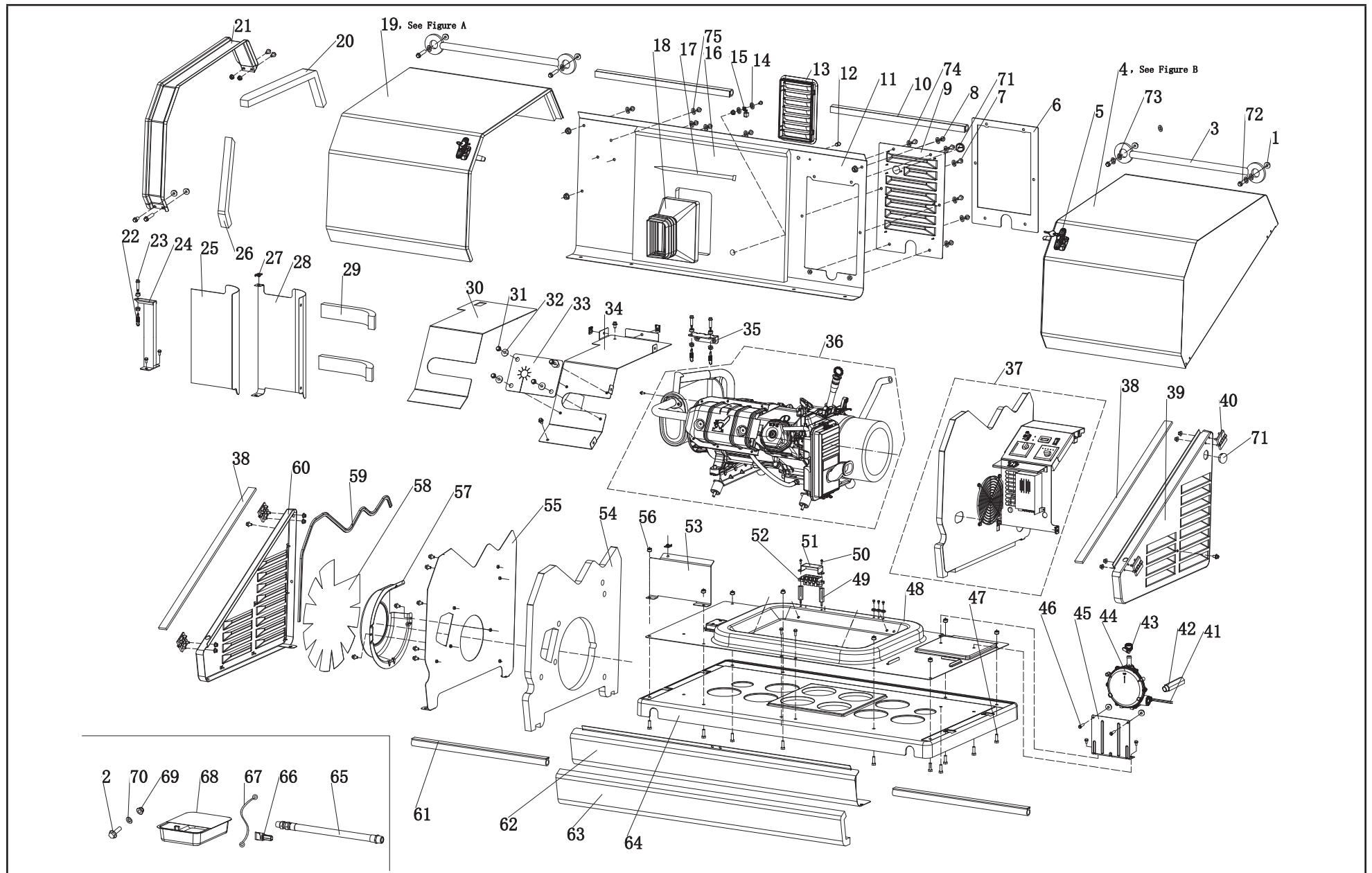
#	Part Number	Description	Qty
1	1.5789.0612	Flange Bolt M6 × 12	12
2	47.080100.01.2	Fan Cover, Black	1
3	2.02.007	Nut M16 × 1.5	1
4	1.5789.0629	Flange Bolt M6 × 29	2
5	47.080005.00	Plate, Fan	1
6	46.123000.01	Ignition Coil	1
7	47.080001.00	Cooling Fan	1
8	46.120100.07	Flywheel, Electric Start	1
9	2.11.007	Oil Seal, Ø35 × Ø52 × 8	2
10	45.030032.00	Sheath, Wire	1
11	1.823.0306.1	Screw M3 × 6	2
12	5.1050.001	Switch, Oil Temperature, 105°C	1
13	2.08.039	Drain Bolt, M12 × 1.5 × 15	1
14	2.03.023	Washer, Ø12.5 × Ø20 × 2	2
15	47.030100.04	Crankcase	1
16	45.127000.02	Oil Level Sensor	1
17	1.5789.0615	Flange Bolt M6 × 15	2
18	1.276.6202	Bearing 6202	2
19	47.050006.00	Weight Balancer	1
20	47.050100.01	Crankshaft	1
21	46.030008.00	Gasket, Crankcase Cover	1
22	2.04.001	Dowel Pin, Ø9 × 14	2
23	46.080600.00	Air Guide, Right Side	1
24	1.276.6207	Bearing 6207	1
25	47.031100.00	Tube, Oil Dipstick	1
26	47.031300.00.48	Dipstick Assembly, Yellow	1
27	45.030007.03	Cover, Crankcase, LPG/NG	1
28	1.5789.0840	Flange Bolt M8 × 40	7

#	Part Number	Description	Qty
29	2.03.021.1	Washer, Ø6.4 × Ø13 × 1, Black	1
30	45.110013.00	Shaft, Governor Gear	1
31	45.110100.00	Gear, Governor	1
32	21.110011.00	Clip, Governor Gear	1
33	45.110012.00	Bushing, Governor Gear	1
34	47.050200.00	Connecting Rod	1
35	47.050005.01	Piston	1
36	2.09.004	Circlip, Ø21 × Ø1	2
37	45.050003.00	Pin, Piston	1
38	46.050303.02	Ring, Oil	1
39	46.050302.02	Ring, Second Piston	1
40	46.050301.02	Ring, First Piston	1
41	2.04.004	Dowel Pin, Ø12 × 20	2
42	47.030009.00	Gasket, Cylinder Head	1
43	46.080400.00	Air Guide, Lower	1
44	47.010100.04	Cylinder Head	1
45	2.01.010	Stud Bolt M8 × 35	2
46	2.15.008(F7RTC)	Spark Plug, F7RTC	1
47	2.08.122	Flange Bolt M10 × 95	4
48	46.020002.00	Gasket, Cylinder Head Cover	1
49	47.021000.00	Cylinder Head Cover, CPE	1
50	45.020001.02	Breather Tube	1
51	47.020100.00	Bolt, Cylinder Head Cover	1
52	45.032000.00	Fuel Guide Assembly	1
53	2.06.013	Clamp, Ø13.5 × b10	1
54	45.030200.00	Support	1
55	47.041000.02	Camshaft	1
56	45.040013.00	Lifter, Valve	2

#	Part Number	Description	Qty
57	47.040002.00	Valve, Intake	1
58	47.040006.00	Valve, Exhaust	1
59	46.040005.00	Push Rod	2
60	45.040015.00	Retainer, Valve Spring	2
61	45.040017.00	Oil Seal, Valve	2
62	45.040003.00	Spring, Valve	2
63	23.040010.00	Bolt, Rocker Arm	2
64	45.040001.00	Retainer, Intake Valve Spring	1
65	45.040007.00	Retainer, Exhaust Valve Spring	1
66	45.040008.00	Rotator, Exhaust Valve	1
67	46.040004.00	Guide Plate, Push Rod	1
68	46.040016.00	Shaft, Rocker Arm	1
69	46.040201.00	Retainer, Rocker Arm	1
70	46.040009.00	Rocker Arm, Intake Valve	1
71	46.040018.00	Rocker Arm, Exhaust Valve	1
72	1.97.1.06	Washer Ø6	2
73	22.040012.00	Screw, Valve Adjustment	2
74	1.6177.1.06	Lock Nut M6, Flange	2
75	21.040021.00	Nut M6 × 0.5, Lock	2
76	2.01.008	Stud Bolt M6 × M8 × 105	2
77	46.130002.20	Gasket, Insulator	1
78	45.130001.00	Insulator, Carburetor	1
79	46.130003.20	Gasket, Carburetor	1
80	161.133000.00	Master Mixer Assembly, LPG/NG	1
81	46.130004.20	Gasket, Air Cleaner	1
82	1.6177.06	Flange Nut M6	3
83	46.091100.03	Base, Air Cleaner	1
84	45.091002.20	Seal, Air Cleaner	1
85	45.091001.20	Separator, Air Cleaner	1
86	47.091300.00	Element, Air Filter UI Paper	1

#	Part Number	Description	Qty
87	47.091200.00	Cover, Air Cleaner	1
88	47.091000.00	Air Cleaner Assembly	1
89	47.090004.00	Pipe, Air Cleaner	1
90	46.080300.20	Air Guide, Upper	1
91	1.5789.0835	Flange Bolt M8 × 35	2
92	46.125100.04	Starter Motor	1
93	46.125200.03	Relay, Starter	1
94	1.93.05	Lock Washer Ø5	2
95	1.16674.0516	Flange Bolt M5 × 16	2
96	45.110001.00	Shaft, Governor Arm	1
97	2.03.019	Washer, Ø8.2 × Ø17 × 0.8	1
98	2.11.006	Oil Seal, Ø7 × Ø14 × 5	1
99	45.110008.00	Pin, Shaft	1
100	45.110003.00	Arm, Governor	1
101	2.08.040	Bolt M6 × 21, Governor Arm	1
102	45.110006.00	Rod, Governor	1
103	45.110005.00	Spring, Throttle Return	1
104	45.110007.00	Spring, Governor	1
105	161.133029.00	Metering Jet, Main, LPG	1
	161.133029.01	Metering Jet, Main, NG	1
106	161.133030.00	Metering Jet, Idle, LPG	1
	161.133030.01	Metering Jet, Idle, NG	1
107	46.040200.00	Rocker Arm Assembly	1
108	46.125000.04	Starter Motor Assembly	1
109	47.010000.04	Cylinder Head Assembly	1
110	1.6177.1	Flange Nut M5	6

ENCLOSURE AND ASSEMBLIES PARTS DIAGRAM



ENCLOSURE AND ASSEMBLIES PARTS LIST

#	Part Number	Description	Qty
1	1.6177.1.06	Flange Lock Nut M6	23
2	1.5789.0615	Flange bolt, M6 x 15	6
3	161.200507.00	Curb Chain Assembly, Cover	2
4	161.200500.61.24	Top Cover Assembly, Right, Silk Grey, Flame Retardant and Textured, See Figure B	1
5	161.200110.00	Hook Lock Assembly	2
6	161.200021.16.6	Seal, Access Cover, Flame Retardant	1
7	1.16674.0820	Flange bolt, M8 x 20	9
8	1.16674.0812	Flange bolt, M8 x 12	26
9	161.200402.60.24	Access Cover, Electric Cabinet, Silk Grey, Flame Retardant and Textured	1
10	161.200109.63	Rubber Strip, 575 mm, Flame Retardant	2
11	161.200401.60.24	Rear Cover, Silk Grey, Flame Retardant and Textured	1
12	5.1460.015	Indicator Light, 24 v	1
13	161.192100.60	Supporter, Air Guide, Alternator, Flame Retardant	1
14	1.862.06	Toothed Lock Washer, Ø6	5
15	5.1560.000	Ground Wire Terminal, Ø6, UL	1
16	161.200021.05.6	Acoustic Panel, Rear Center Chamber, Flame Retardant	1
17	9.3410.02	Nylon Cable Ties, 5 x 500 mm	1
18	161.192300.00	Air Guide, Alternator	1
19	161.200500.60.24	Top Cover Assembly, Left, Silk Grey, Flame Retardant and Textured, See Figure A	1
20	161.200021.17.6	Seal Strip, Top Cover, Long, 625 x 50 x 25 mm, Flame Retardant	1
21	161.201600.02.1	Gutter, Black	1
22	161.100006.00	Spring, Muffler	3

#	Part Number	Description	Qty
23	2.08.119	Flange Bolt M8 x 35, Muffler	3
24	161.1010005.01.2	Supportor, Muffler, Bottom, Black	1
25	161.200021.13.6	Acoustic Panel, Muffler Cover, Front, Flame Retardant	1
26	161.200021.18.6	Seal Strip, Top Cover, Short, 50 x 320 x 25 mm, Flame Retardant	1
27	2.02.032	Cage Nut, M8	4
28	161.200017.63.24	Muffler Cover, Back, Silk Grey, Flame Retardant and Textured	1
29	161.200021.15.6	Foams, Muffler Cover, Back, Flame Retardant	2
30	161.200021.06.6	Acoustic Panel, Muffler Cover, top, Flame Retardant	1
31	1.5789.0612	Flange Bolt, M6 x 12	8
32	2.03.004	Washer, Ø24 x Ø6.5 x 1.5	4
33	161.200017.02	Thermal Baffle	1
34	161.200017.60.24	Muffler Cover, Top, Silk Grey, Flame Retardant and Textured	1
35	161.1010005.00.2	Supportor, Muffler, Top, Black	1
36	100199.901.V1.3	Generator Assembly (Power Pack)	1
37	100199.902.V1.3	Control Panel Assembly	1
38	161.200021.02.6	Seal Strip, Right/Left Cover, Flame Retardant	2
39	161.200300.60.24	Right Cover Assembly, Silk Grey, Flame Retardant and Textured	1
40	161.201900.00	Hinge	4
41	5.1910.004	Wiring	1
42	161.130021.02	Galvanized Pipe, NPT 3/4, 117 mm	1
43	2.06.015	Clamp, Ø16-Ø25	1
44	161.136000.04.1	Pressure Reducing Valve, LPG/NG	1
45	161.200018.00	Supportor, Pressure Reducing Valve	1

#	Part Number	Description	Qty
46	1.5789.0629	Flange bolt, M6 x 29	6
47	1.5783.0825	Bolt, M8 x 25	8
48	161.200601.60.24	Base Center, Silk Grey, Flame Retardant and Textured	1
49	2.08.133	Male Female bolt, M5 x 50	2
50	1.16674.0516	Flange bolt, M5 x 16	2
51	161.210018.00	Cover, Terminal Block	1
52	161.210011.02	Terminal Block, 60A, 90° Angle	1
53	161.200017.61.24	Muffler Cover, Front, Silk Grey, Flame Retardant and Textured	1
54	161.200021.03.6	Acoustic Panel, Left Firewall, Flame Retardant	1
55	161.200005.61.24	Firewall, Left, Silk Grey, Flame Retardant and Textured	1
56	1.6177.1.08	Flange Lock Nut, M8	21
57	161.192300.01.2	Fan Cover, Rotor, Black	1
58	161.200021.12.6	Foams, Fan Cover, Flame Retardant	1
59	161.200109.61	Rubber Strip, 1120 mm, Flame Retardant	1
60	161.200200.60.24	Left Cover, Silk Grey, Flame Retardant and Textured	1
61	161.200109.62	Rubber Strip, 530 mm, Flame Retardant	2
62	161.200101.60.24	Front Cover, Silk Grey, Flame Retardant and Textured	1
63	161.200021.11.6	Foams, Front Cover, Flame Retardant	1
64	161.201800.00	Plastic Pallet, PP	1
65	161.130021.01	LPG Hose With NPT3/4 Nipple	1
66	9.1120.001	Screwdriver, Jet	1
67	5.1900.074	Battery Jump Wire, 275 mm, 6 AWG	1
68	161.200023.00.1	Oil Container, Black	1
69	1.6182.06	Lock Nut M6, Flange	4
70	1.97.1.06	Washer, Ø6	4

#	Part Number	Description	Qty
71	161.080007.00	Cap, Ø35	2
72	1.5789.0620	Flange bolt, M6 x 20	4
73	1.97.1.08	Washer, Ø8	4
74	2.03.065	Insulating Washer, Ø8 × Ø17	16
75	2.03.064	Insulating Washer, Ø6 × Ø12	4

TOP COVER ASSEMBLY, LEFT PARTS DIAGRAM

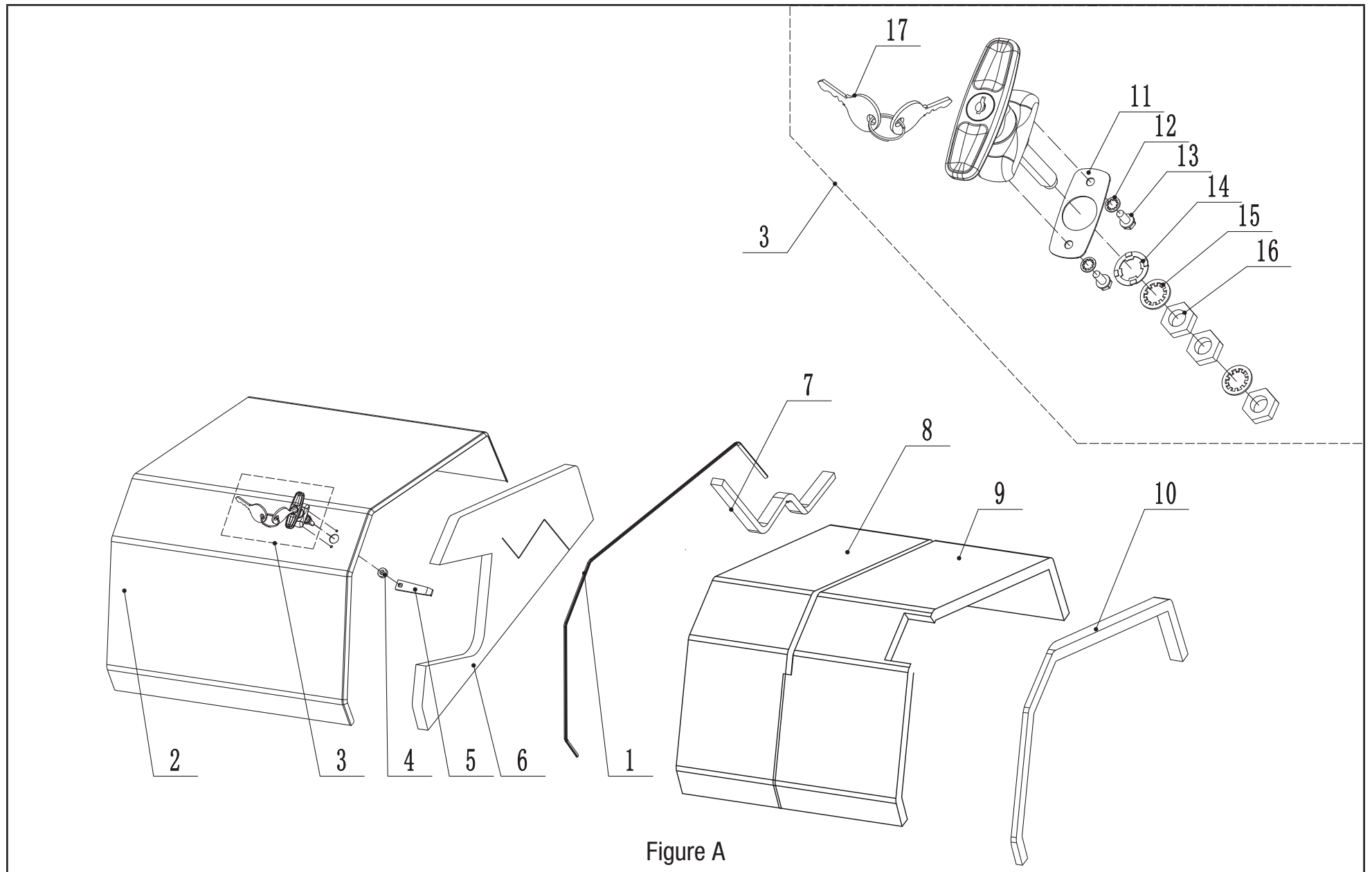


Figure A

TOP COVER ASSEMBLY, LEFT PARTS LIST

#	Part Number	Description	Qty
1	161.200109.00	Seal Strip, 20x1150x8mm, Gutter	1
2	161.200500.00.24	Top Cover, Left	1
3	161.200110.00	Handle Assembly	1
4	2.13.027	Bushing, Ø10.5×Ø16×7.5	1
5	161.201004.00	Locking Plate	1
6	161.200021.07	Acoustic Panel, Left Cover, Side	1
7	161.200021.19	Seal Strip, Top Cover, 32x560x15mm	1
8	161.200021.20	Acoustic Panel, Cover, Top	1
9	161.200021.08	Acoustic Panel, Left Cover, Top	1
10	161.200021.01	Seal, Gutter	1
11	161.200110.00.07	Rubber Gasket, Handle	1
12	161.200110.00.02	Locking Washer, Ø5	2
13	161.200110.00.03	Bolt, M5X12	2
14	161.200110.00.04	Wave Washer Ø10	1
15	161.200110.00.05	Locking Washer, Ø10	2
16	161.200110.00.06	Nut, M10	3
17	161.200110.00.01	Key, Handle	1

TOP COVER ASSEMBLY, RIGHT PARTS DIAGRAM

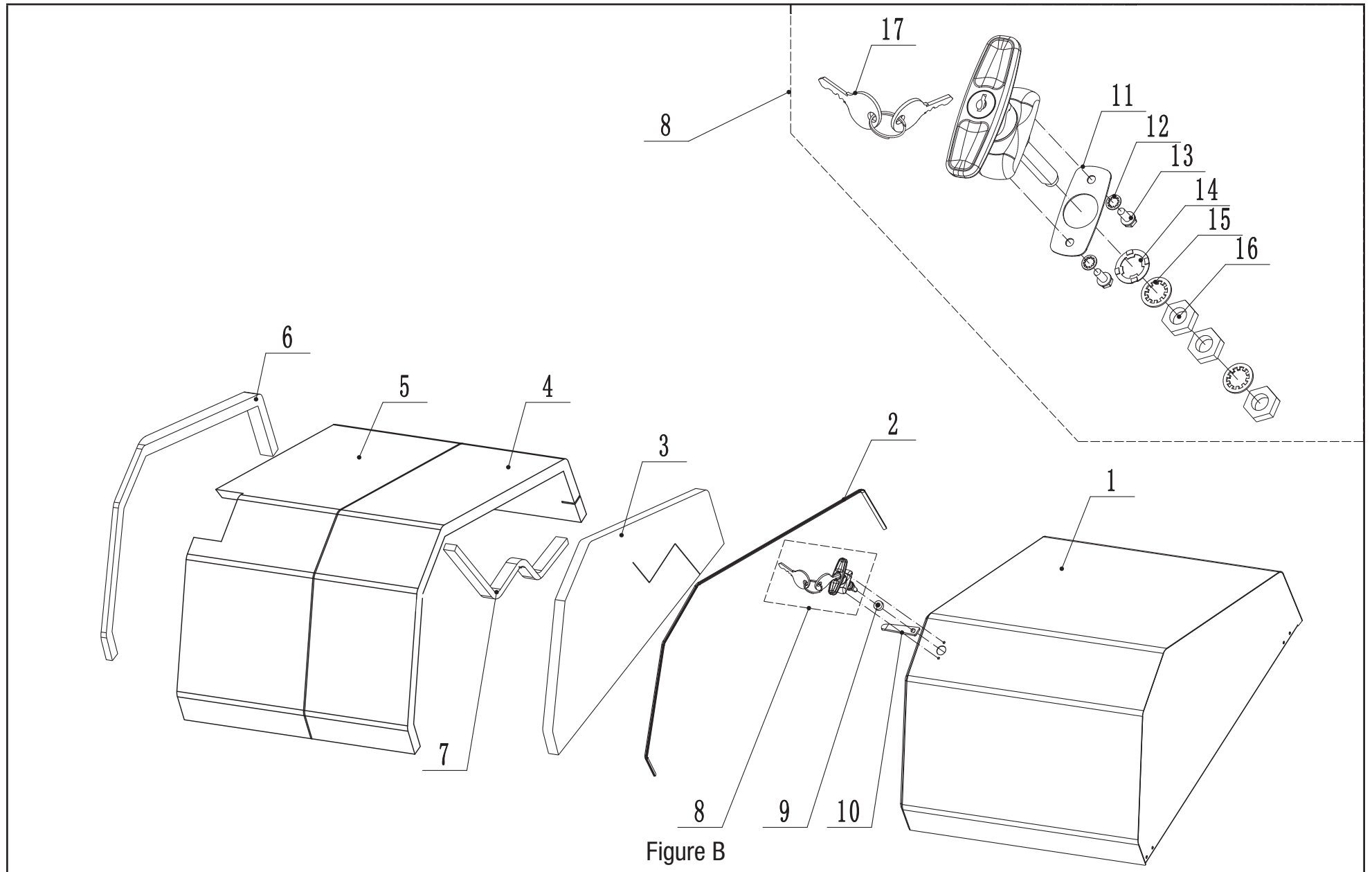
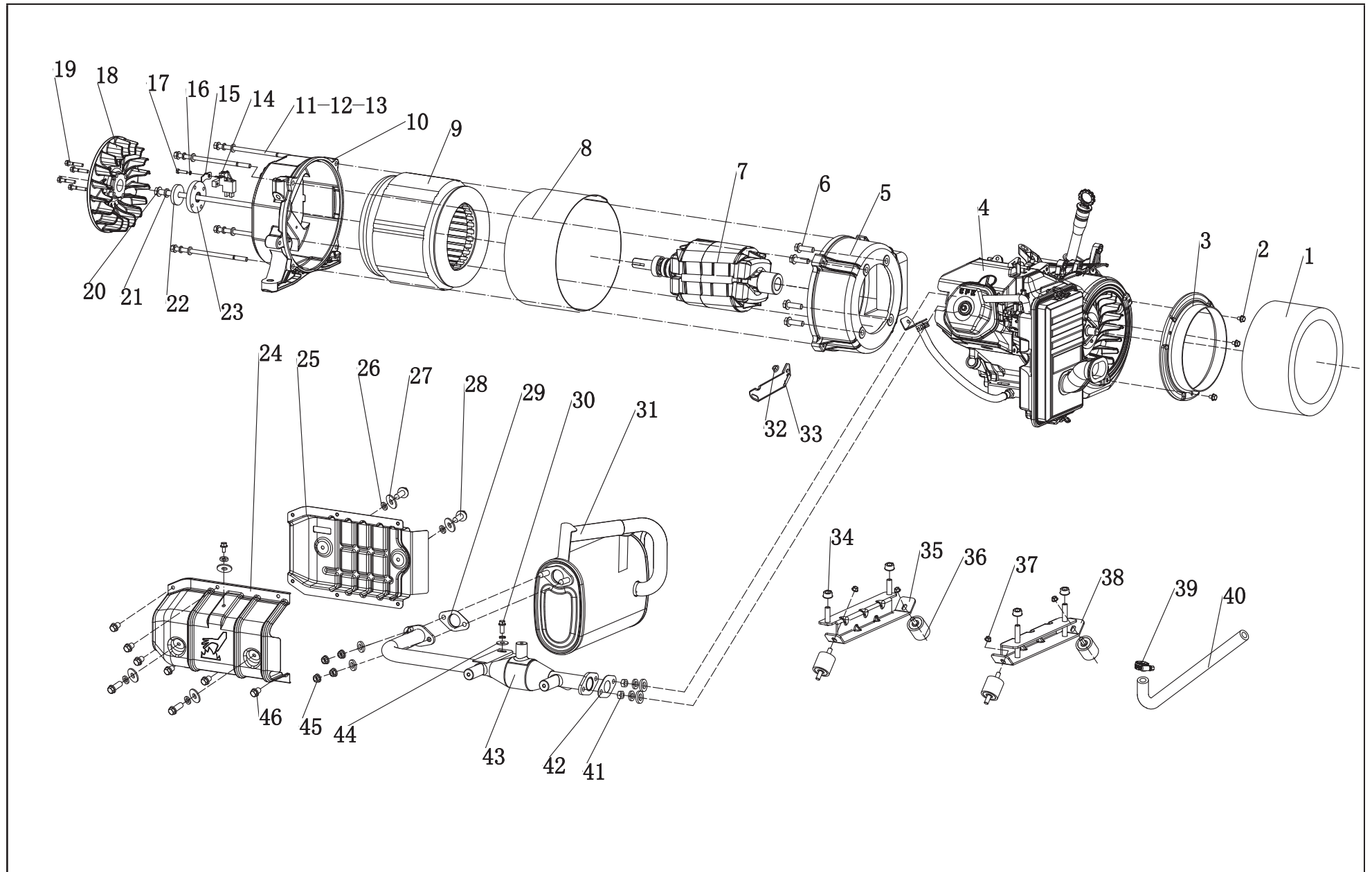


Figure B

TOP COVER ASSEMBLY, RIGHT PARTS LIST

#	Part Number	Description	Qty
1	161.200500.01.24	Top Cover Assembly, Right	1
2	161.200109.00	Seal Strip, 20x1150x8mm, Gutter	1
3	161.200021.09	Acoustic Panel, Right Cover, Side	1
4	161.200021.20	Acoustic Panel, Cover, Top	1
5	161.200021.10	Acoustic Panel, Right Cover, Top	1
6	161.200021.01	Seal Strip, 20x1150x8mm, Gutter	1
7	161.200021.19	Seal Strip, Top Cover, 32 x 560 x 15	1
8	161.200110.00	Handle Assembly	1
9	2.13.027	Bushing, Ø10.5×Ø16×7.5	1
10	161.201004.00	Locking Plate	1
11	161.200110.00.07	Rubber Gasket, Handle	1
12	161.200110.00.02	Locking Washer, Ø5	2
13	161.200110.00.03	Bolt, M5X12	2
14	161.200110.00.04	Wave Washer, Ø10	1
15	161.200110.00.05	Locking Washer, Ø10	2
16	161.200110.00.06	Nut, M10	3
17	161.200110.00.01	Key, Handle	1

ALTERNATOR AND EXHAUST SYSTEM PARTS DIAGRAM



ALTERNATOR AND EXHAUST SYSTEM PARTS LIST

#	Part Number	Description	Qty
1	161.200021.00.6	Foams Ring, Engine Fan, Flame Retardant	1
2	1.5789.0608	Flange Bolt, M6 X 8	3
3	161.200024.00.1	Supportor, Air Guide Cover	1
4	47.692-V1.2	Engine	1
5	161.190007.00	Crankcase Cover	1
6	1.5789.1022	Flange Bolt, M10 X 22	4
7	161.191100.00	Rotor Component, Ø175 X Ø225 X 120	1
8	161.191002.00	Stator Cover	1
9	161.191200.00	Stator Assembly, Ø230 X 120	1
10	161.190002.00	End Housing	1
11	2.08.110	Bolt, M8 X 170	4
12	1.93.08	Lock Washer, Ø8	7
13	1.848.08	Washer, Ø8	6
14	161.190300.00	Carbon Brush Assembly	1
15	122.190004.01	Pinch, Carbon Brush	1
16	1.93.05	Lock Washer, Ø5	1
17	1.5783.0520	Bolt, M5 X 20	1
18	161.190001.00	Rotor Fan, 8KW	1
19	1.5789.0629	Flange Bolt, M6 X 29	4
20	2.08.113	Flange Bolt, M10 X 340	1
21	1.7244.10	Lock Washer, Ø10	3
22	2.03.050	Washer, Ø25 X Ø10.2 X 2.7	1
23	161.190019.00	Flange Plate, Fan	1
24	161.080009.01.2	Air Guide, Muffler Pipe, Front	1
25	161.080009.00.2	Air Guide, Muffler Pipe, Back	1
26	1.93.06	Lock Washer, Ø6	5
27	2.03.004	Washer, Ø24 X Ø6.5 X 1.5	5
28	1.5789.0615	Flange bolt, M6 X 15	5

#	Part Number	Description	Qty
29	161.101002.00	Gasket, Muffler	1
30	1.16674.0825	Flange Bolt, M8 X 25	1
31	161.101000.00	Muffler Assembly	1
32	1.6177.1.06	Flange Lock Nut M6	1
33	45.090006.20	Holder, Air Cleaner	1
34	1.6177.1.10	Flange Lock Nut, M10	4
35	161.201600.01	Supportor, End Housing	1
36	161.200605.00	Motor Mount	4
37	1.6177.1.08	Flange Lock Nut, M8	8
38	161.201600.00	Supportor, Engine	1
39	2.06.015	Clamp, Ø16-Ø25	1
40	161.130021.00	Pipe, LPG/NG	1
41	1.6175.08	Nut, M8	2
42	46.100001.07	Gasket, Exhaust Pipe	1
43	161.101001.00	Exhaust Pipe	1
44	1.96.08	Washer, Ø8	1
45	1.6187.1.10	Lock Nut M10, Flange, Metal	4
46	1.5789.0608	Flange bolt, M6 X 8	6

CONTROL PANEL PARTS LIST

#	Part Number	Description	Qty
1	5.1600.010	Connector, Ten Holes, Male	1
2	5.1610.010	Connector, Ten Holes, Female	1
3	5.1810.000	Over Voltage Protector	1
4	1.818.0514	Screw, M5 x 14	3
5	161.210011.03	Terminal Block, 75A, 90° Angle	1
6	2.02.032	Cage Nut, M8	7
7	161.200004.60.24	Cover, Electric Cabinet, Silk Grey, Flame Retardant and textured	1
8	5.1000.006.3	Switch, UL, Red	1
9	5.1420.002	Hour Meter	1
10	5.1240.935	35.5Amp Circuit Breaker, Double Pole, UL	1
11	1.9074.3.0510	Screw, M5X10	4
12	5.1850.004.Y	ATS Controller, ATS100	1
13	5.1850.003.Y	Generator Controller,100666Y	1
14	1.5789.0550	Flange Bolt, M5 x 50	4
15	2.13.028	Bushing, Ø5.5 x Ø14 x 25	4
16	5.1850.005	Relay Module, Engine	1
17	2.08.068	Flange Bolt, M5 x 13	4
18	161.200020.00	Grille	1
19	2.02.030	Cage Nut M5	8
20	161.200005.60.24	Firewall, Right, Silk Grey, Flame Retardant and textured	1
21	161.200109.61	Rubber Strip, 1120mm, Flame Retardant	1
22	161.200021.04.6	Foams, Right Firewall, Flame Retardant	1
23	1.16674.0812	Flange Bolt, M8x12	3
24	163.210003.00	Grommet, Wire	1
25	2.02.031	Cage Nut, M6	2
26	161.190200.04	AVR, TT916U-402	1

#	Part Number	Description	Qty	
27	2.13.029	Bushing, Ø7 x Ø14 x 50	2	
28	1.5789.0675	Flange Bolt, M6 x 75	2	
29	5.1820.003	Charger, Battery, 24V	1	
30	1.9074.4.0414.2	Screw, M4 x 14	3	
31	163.200004.61.24	Cover, Charger, Silk Grey, Flame Retardant and textured	1	
32	1.9074.4.0306	Screw, M3 x 6	4	
33	1.823.0412	Screw, M4 x 12	2	
34	161.210017.00	Supportor, Ten Holes, Connector	1	
35	5.1320.017	Plastic Conduit, CSA, 50mm	1	
36	100199.21.10.V1.2	Wire Assembly	1	
	36-1	5.1910.007	Battery Cable Positive, Red	1
	36-2	5.1910.006	Battery Cable Negative, Black	1
	36-3	5.1900.074	Battery Transfer Cable, Black	1
37	161.230003.00.V1.0	Decal, Panel,100199	1	
38	161.230004.00.V1.0	Decal, Nameplate, 100199	1	
39	5.1050.009	Switch, UL, Black	1	
40	100237.21.20	Wire Assembly, Shutdown Switch	1	

WIRING DIAGRAM

