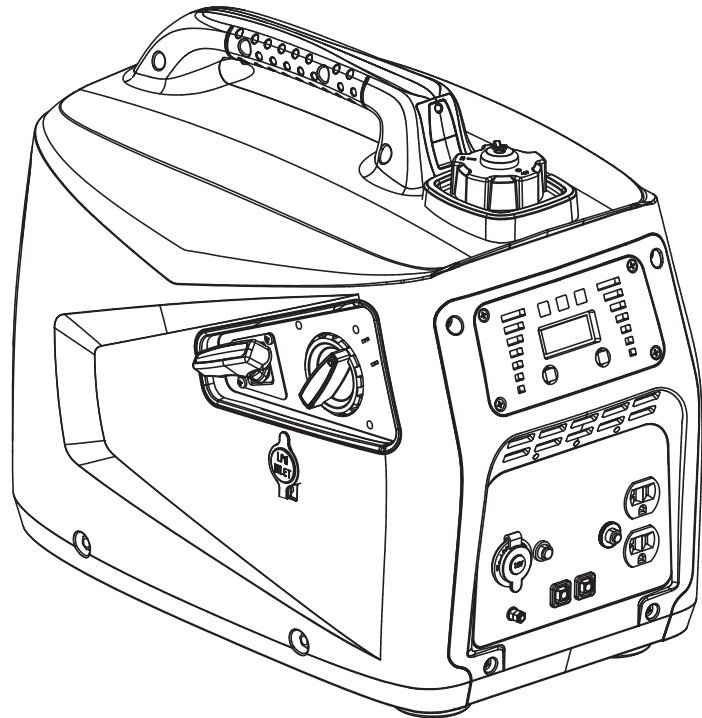




Champion Power Equipment, Inc., Santa Fe Springs, CA USA

**MODEL #100264**



## **PARTS INFORMATION**

**3200W PORTABLE INVERTER GENERATOR**

**SERIAL NUMBER RANGE: ALL**

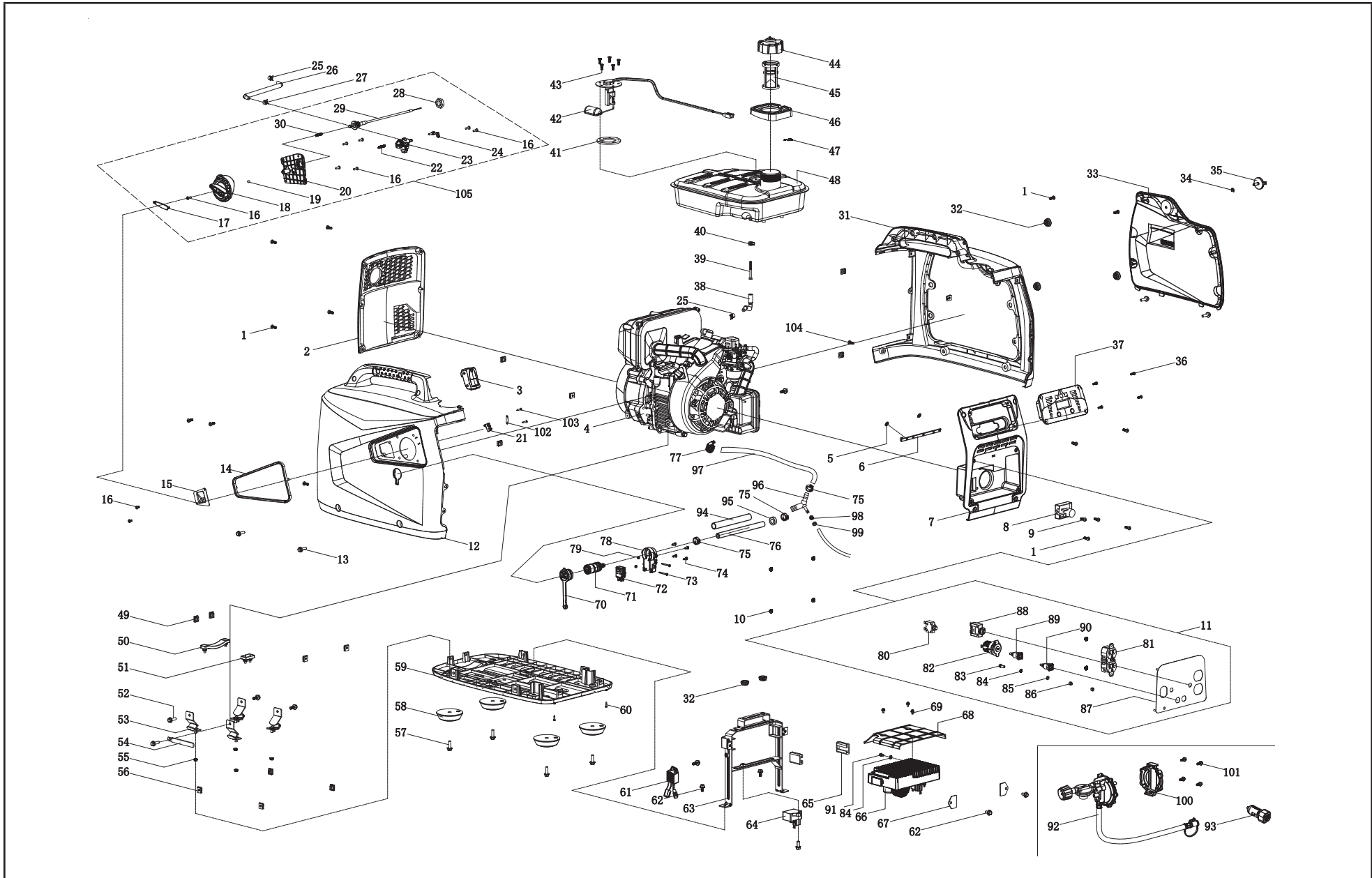


To order replacement parts please visit:  
**[shop.championpowerequipment.com](http://shop.championpowerequipment.com)**  
or call **1-877-338-0999**.

## **TABLE OF CONTENTS**

<b>Inverter Generator Parts Diagram.....</b>	<b>3</b>
<b>Inverter Generator Parts List .....</b>	<b>4</b>
<b>Engine Parts Diagram .....</b>	<b>6</b>
<b>Engine Parts List.....</b>	<b>7</b>
<b>Wiring Diagram .....</b>	<b>9</b>

# INVERTER GENERATOR PARTS DIAGRAM



## INVERTER GENERATOR PARTS LIST

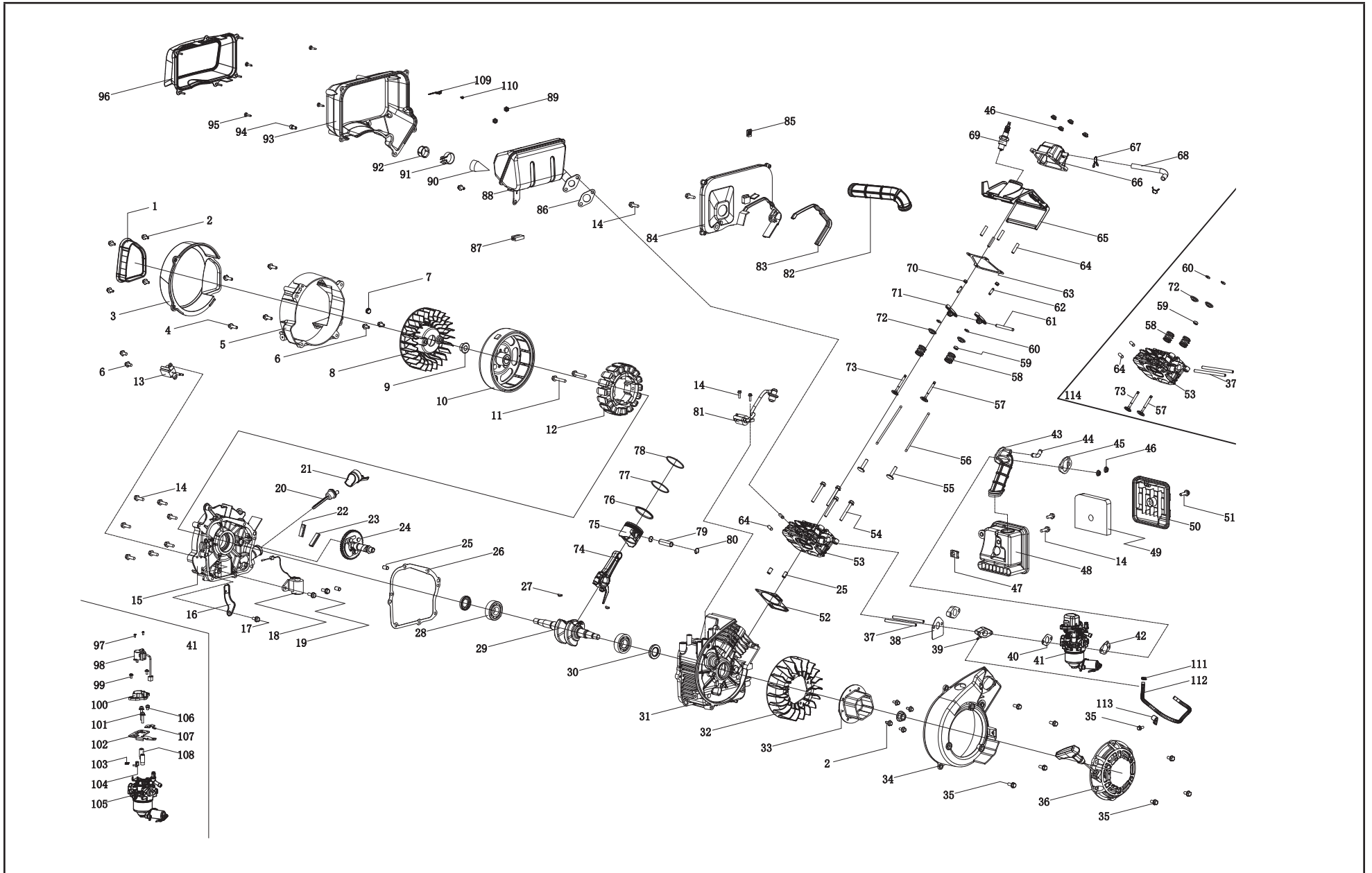
#	Part Number	Description	Qty.
1	1.818.0514.1	Screw M5 x 14, Black	12
2	62.200200.00	Cover, Left, black	1
3	62.214000.00	Indicator Light Assembly, Fuel Tank	1
4	62.490	Engine, 80 cc	1
5	2.03.061	Circlip	2
6	62.214000.01	Indicator Light Assembly, Control Panel	1
7	62.200300.00	Cover, Right, black	1
8	88.126000.00	Ignition Assembly	1
9	1.818.0414.1	Screw M4 x 14, Black	2
10	1.6177.1.04.1	Lock Nut M4, Flange, Black	6
11	100306.21	Control Panel Assembly	1
12	62.200101.01.48	Front Cover, Yellow	1
13	1.5789.0615.1	Flange Bolt M6 x 15, Black	4
14	62.200106.00	Protection Strip	1
15	62.061200.00	Guide Plate, Rope	1
16	1.823.0412.1	Screw M4 x 12, Black	9
17	62.139002.00	Cover, Rotary Knob	1
18	62.139001.01	Rotary Knob	1
19	62.139008.00	Ball Bearing, Rotary Knob	1
20	62.139004.01	Fixed Plate	1
21	5.1050.008	Microswitch	1
22	62.139007.00	Spring, Steel Ball	1
23	62.070400.01	Fuel Valve	1
24	62.139006.00	Pressure Plate	1
25	2.06.016	Clamp, Ø8.7 x b8	2
26	62.070011.00	Pipe, Fuel Valve to Carburator	1
27	2.06.007	Clamp, Ø8 x b6	1
28	2.02.036	Thin Hexnut M16 x 1.5	1
29	62.130200.00	Pull Choke Assembly	1
30	62.130201.00	Spring, Pull Choke	1

#	Part Number	Description	Qty.
31	62.200401.00.48	Supporter, Rear Cover, Yellow	1
32	81.200102.00	Rotundity Jacket	5
33	62.200402.01.48	Protector, Rear Cover, Yellow	1
34	1.896.05	Split Washer Ø5	1
35	62.200410.00	Rotary Knob, Protector, Rear Cover	1
36	1.819.0414.2	Sunk Screw M4 x 14	4
37	62.210017.00	Multifunction Display	1
38	88.070011.01	Pipe, Fuel Tank to Valve	1
39	111.070300.01	Fuel Filter, Wire Mesh	1
40	2.06.018	Clamp, Ø10.5 x b8	1
41	122.070036.00	Seal Ring	1
42	62.070035.00	Fuel Level Sensor	1
43	1.819.0516.2	Sunk Screw M5 x 16	5
44	62.070100.00	Fuel Tank Cap	1
45	62.070300.00	Fuel Filter	1
46	62.200502.00	Spillway, Fuel Tank	1
47	82.080009.00	Mustache clip	1
48	62.071000.00	Fuel Tank, 4.2L, Black	1
49	2.02.010	Cage Nut M5	10
50	81.200603.00	Mount, End Cover	1
51	81.200602.00	Mounting Rubber, End Cover	1
52	1.5789.0615	Flange Bolt M6 x 15	6
53	81.200605.00	Motor Mount	4
54	2.05.050	Clamp, Wire, 100	1
55	1.6177.1.06.1	Lock Nut M6, Flange, Black	4
56	2.02.013	Cage Nut M6	4
57	1.5789.0620	Flange Bolt M6 x 20	4
58	62.200604.00	Mounting Rubber, Base Setting	4
59	62.200601.00	Base Setting Component	1
60	1.845.2913	Tapping Screw ST2.9 x 13	2

#	Part Number	Description	Qty.
61	5.1800.009	Rectifier	1
62	1.5789.0612	Flange Bolt M6 x 12	5
63	62.070045.01	Supportor, Fuel Tank	1
64	5.1820.004	Charger	1
65	81.220001.00	Protector, Control Unit	2
66	62.221000.00	Control Unit, 1600W / 120V / 60HZ	1
67	81.220003.00	Pressure Plate, Control Unit	2
68	62.220006.00	Air Shroud, Control Unit	1
69	1.9074.1.0408	Screw M4x8	3
70	62.200102.00	Circular Rubber Sheath	1
71	87.070021.02	Inlet Connection	1
72	5.1050.000	Microswitch	1
73	1.819.1.0330	Sunk Screw M3 x 30	2
74	1.845.3513	Tapping Screw ST3.5 x 13	4
75	2.06.048	Clamp Ø15.7	3
76	62.070012.00	Pipe 220 mm	1
77	2.06.019	Hose Clamp Ø15	1
78	62.070037.00	Support, Inlet Connection	1
79	1.6170.03	Hexagon Nut M3	2
80	5.1200.308	8Amp Circuit Breaker, Push Button	1
81	5.1120.010	Receptacle 5-20R, Duplex	1
82	5.1110.005	Receptacle, DC12V	1
83	1.5783.0516.1	Bolt M5 x 16, Black	1
84	1.862.05	Lock Washer Ø5, Toothed	2
85	1.97.1.05.1	Washer, Ø5, Black	1
86	1.6170.05.1	Nut M5, Black	2
87	62.01.1.2	Control Panel	1
88	5.1213.920	20Amp Circuit Breaker, Push Button, CSA	1
89	83.210001.00.1	Connect Port, Black	1
90	83.210001.00.3	Connect Port, Red	1
91	1.16674.0510	Flange Bolt M5 x 10	1
92	62.130000.90	LPG Hose With Regulator, 700 mm	1

#	Part Number	Description	Qty.
93	9.1700.008	"Plug, USB 5V/2.4A"	1
94	5.1320.029	Plastic Pipe 170 mm	1
95	2.12.011	Buffer Ring ,15x9	1
96	62.130031.00	Three Way Pipe	1
97	62.070012.01	Pipe 150 mm	1
98	2.06.049	Clamp Ø10.5	1
99	2.12.004	Buffer Ring ,9.5x10	1
100	62.138000.90	Regulator Cover	1
101	1.5789.0612.1	Flange Bolt M6 x 12, black	4
102	62.200025.00	Pressure Plate	1
103	1.848.2995	Tapping Screw ST2.9 x 9.5	2
104	1.818.0512.3	Screw M5 x 12, Green	2
105	62.139000.01	Rotary Knob Assembly	1

# ENGINE PARTS DIAGRAM



**ENGINE PARTS LIST**

#	Part Number	Description	Qty.
1	62.190006.00	Rubber Sleeve, End Cover	1
2	1.5789.0512	Flange Bolt M5 x 12	4
3	62.190002.01	Cover, End Housing	1
4	1.16674.0620	Flange Bolt M6 x 20	4
5	62.190002.00	End Housing, Motor	1
6	1.16674.0612	Flange Bolt M6 x 12	5
7	24.091008.01	End Cap	1
8	62.190001.00	Cooling Fan, Rotor	1
9	2.02.018	Nut M12 x 1.25	2
10	62.191100.00	Rotor Component	1
11	1.5789.0635	Flange Bolt M6 x 35	2
12	62.191200.03	Stator Component	1
13	81.122000.00	Trigger Assembly	1
14	1.5789.0620	Flange Bolt M6 x 20	12
15	81.030007.00	Cover, Crankcase	1
16	81.030006.00	Plate, Coil	1
17	1.5789.0608	Flange Bolt M6 x 8	1
18	81.127000.00	Oil Level Sensor	1
19	1.5789.0612	Flange Bolt M6 x 12	2
20	81.031000.00	Oil Dipstick Assembly	1
21	81.030035.00	Oil Nipple	1
22	81.030013.00	Seal Strip 1, Crankcase Cover	1
23	81.030013.01	Seal Strip 2, Crankcase Cover	1
24	81.040100.00	Camshaft	1
25	2.04.002	Dowel Pin Ø8 x 14	4
26	81.030008.00	Gasket, Crankcase Cover	1
27	2.14.013	Woodruff Key 3 x 5 x 13	2
28	1.276.6204	Bearing 6204	2
29	81.050100.00	Crankshaft	1
30	2.11.019	Oil Seal Ø20 x Ø35 x 5	2

#	Part Number	Description	Qty.
31	81.030100.00	Crankcase	1
32	81.080001.00	Cooling Fan	1
33	81.060001.00	Pulley, Starter	1
34	62.080100.00	Fan Cover	1
35	1.5789.0615	Flange Bolt M6 x 15	9
36	62.061000.00	Recoil Assembly	1
37	2.01.049	Stud Bolt M6 x 99	2
38	81.130002.00	Gasket, Insulator	1
39	62.130001.00	Insulator, Carburetor	1
40	81.130003.00	Gasket, Carburetor	1
41	62.130000.03	Carburetor Assembly	1
42	81.130004.00	Gasket, Air Cleaner	1
43	81.090004.00	Pipe, Air Cleaner	1
44	81.090003.00	Joint, Breather Pipe	1
45	81.090005.00	Pressure Plate, Air Filter Tube	1
46	1.6177.1.06.3	Flange Lock Nut M6	6
47	2.02.013	Cage Nut M6	1
48	62.091100.00	Base, Air Cleaner	1
49	81.091003.00	Element, Air Cleaner	1
50	62.091200.00	Cover, Air Cleaner	1
51	2.08.053	Bolt M6 x 20	1
52	81.030009.00	Gasket, Cylinder Head	1
53	62.010100.02	Cylinder Head	1
54	1.5789.0655	Flange Bolt M6 x 55	4
55	81.040013.00	Lifter, Valve	2
56	81.040005.00	Push Rod	2
57	81.040002.00	Valve, Intake	1
58	83.040003.01	Spring, Valve	2
59	81.040017.00	Oil Seal, Valve	1
60	83.040014.01	Valve Collet	2

#	Part Number	Description	Qty.
61	81.040016.00	Shaft, Rocker Arm	1
62	81.040012.00	Screw, Valve Adjustment	2
63	62.020002.00	Gasket, Cylinder Head Cover	1
64	2.01.027	Stud Bolt M6 x 27	6
65	62.080200.00	Air Shroud, Cylinder	1
66	62.021000.00	Cover, Cylinder Head	1
67	2.06.010	Clamp, Ø10.5 x Ø1	2
68	62.020001.00	Breather Tube	1
69	2.15.013	Spark Plug E7RTC	1
70	2.02.009	Nut M5 x 0.5, Lock	2
71	81.040009.00	Rocker Arm, Intake Valve	2
72	83.040001.01	Retainer, Valve Spring	2
73	81.040006.00	Valve, Exhaust	1
74	81.050200.00	Connecting Rod Assembly	1
75	81.050005.02.1	Piston	1
76	81.050303.02	Ring Assembly, Oil	1
77	81.050302.02	Piston Ring, Second	1
78	81.050301.02	Piston Ring, First	1
79	81.050003.00	Wrist Pin, Piston	1
80	2.09.007	Circlip Ø13.5 x Ø1	2
81	81.123000.01	Ignition Coil	1
82	81.080003.00	Air Duct	1
83	81.081001.00	Muffler Protector Seal	1
84	62.081100.00	Muffler Protector, Side	1
85	81.081003.00	Fastening Insert Piece	1
86	81.100001.00	Gasket, Exhaust Pipe	1
87	81.081002.00	Rubber Seal Sleeve	1
88	62.101100.00	Muffler Assembly	1
89	1.6175.06.3	Nut M6	2
90	81.101300.00	Spark Arrester	1
91	2.06.011	Clamp, Ø25 x b10	1
92	81.101501.00	Cap, Spark Arrester	1

#	Part Number	Description	Qty.
93	62.081200.00	Middle Shield, Muffler	1
94	1.70.0616	Inside Hexagonal Bolt M6X16	1
95	1.845.4817	Tapping Screw ST4.8 x 17	4
96	62.081300.00	Terminal Shield, Muffler	1
97	1.818.0306.1	Screw M3 x 6	2
98	62.132200.00	Stepper Motor	1
99	1.9074.1.0408	Screw M4 x 8	2
100	81.132100.00	Stepper Motor Base	1
101	1.9074.4.0535	Screw M5 x 35	2
102	62.130005.00	Support, Stepper Motor	1
103	81.130010.00	Spring, Connector	1
104	81.130008.00	Connector, Choke Valve Axis	1
105	81.131000.03	Carburetor	1
106	1.9074.3.0510	Screw M5 x 10	1
107	62.130007.00	Pressure Plate, Choke Control Line	1
108	81.130006.00	Brace, Support Plate	2
109	62.080005.00	Plate Middle Shield	1
110	1.845.4295	Tapping Screw ST4.2 x 9.5	1
111	2.06.049	Clip Ø10.5	1
112	62.070012.02	Pipe 315 mm	1
113	2.05.055	Clamp Ø9.5	1
114	62.010000.00	Cylinder Head Assembly	1



# WIRING DIAGRAM

