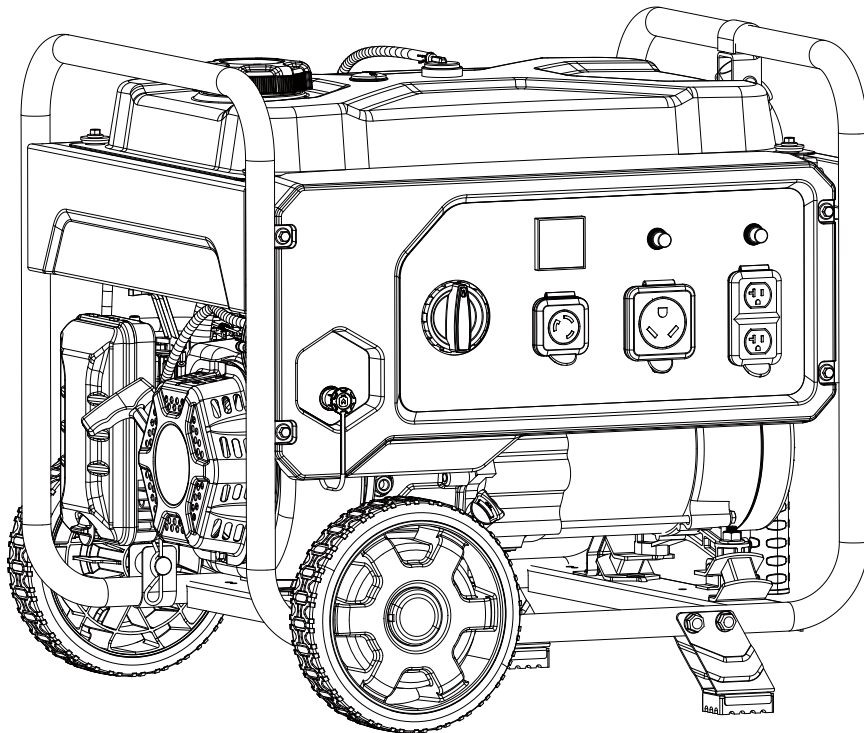


Champion Power Equipment, Inc., Santa Fe Springs, CA USA

MODEL #201042



PARTS INFORMATION

3550W DUAL FUEL PORTABLE GENERATOR

SERIAL NUMBER RANGE: ALL



To order replacement parts please visit:
shop.championpowerequipment.com
or call **1-877-338-0999**.

TABLE OF CONTENTS

Generator Parts Diagram	3
Generator Parts List	4
Engine Parts Diagram	5
Engine Parts Part List	6
Cylinder Head Part Diagram	8
Cylinder Head Part List	9
Carburetor Part Diagram	10
Carburetor Part List	11
Alternator Diagram	12
Alternator Part List	13
Fuel Tank Part Diagram	14
Fuel Tank Part List	15
Outlet Panel Part Diagram	16
Outlet Panel Part List	17
Frame Part Diagram	18
Frame Part List	19
Wiring Diagram	20

GENERATOR PARTS DIAGRAM

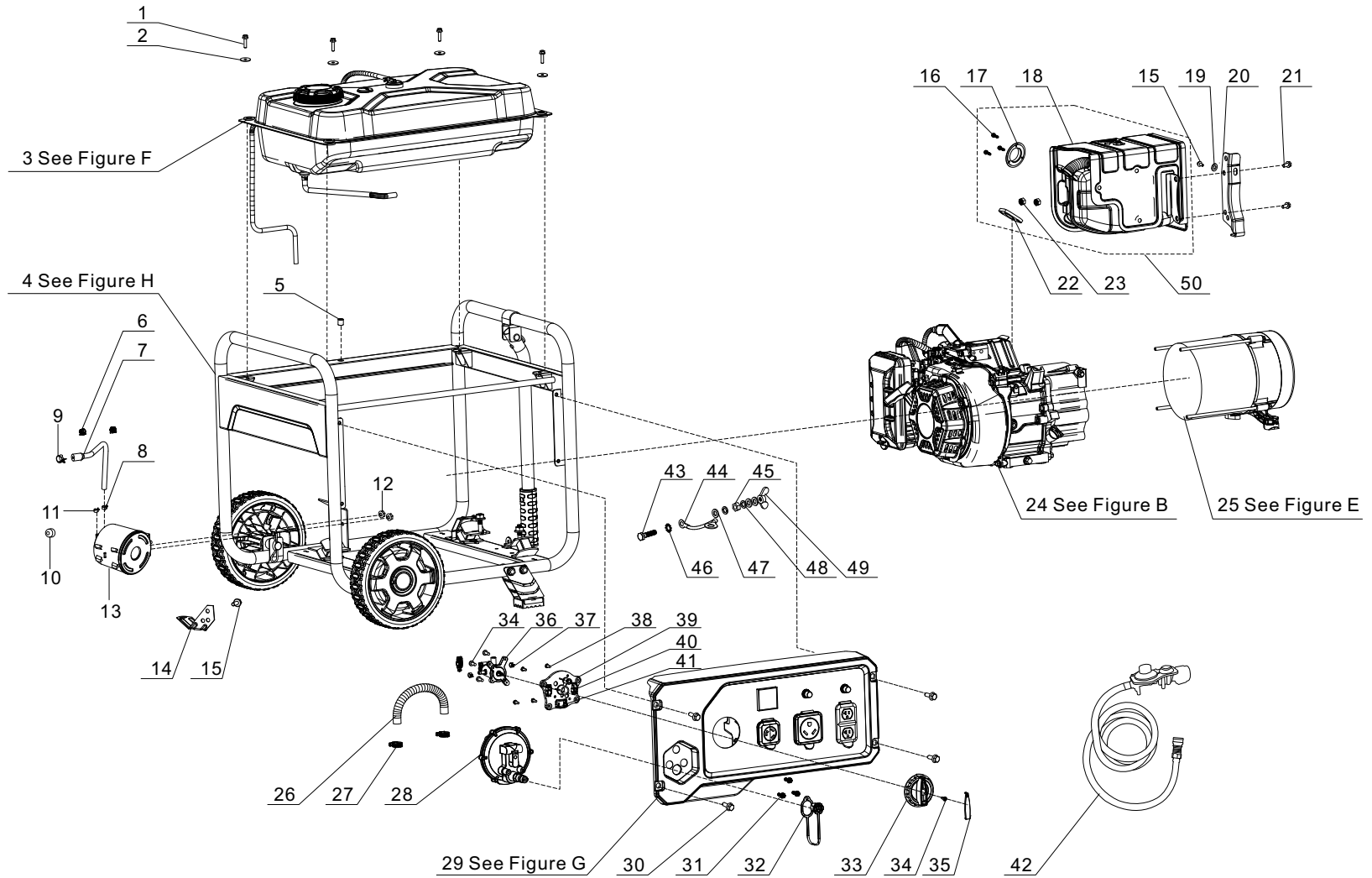


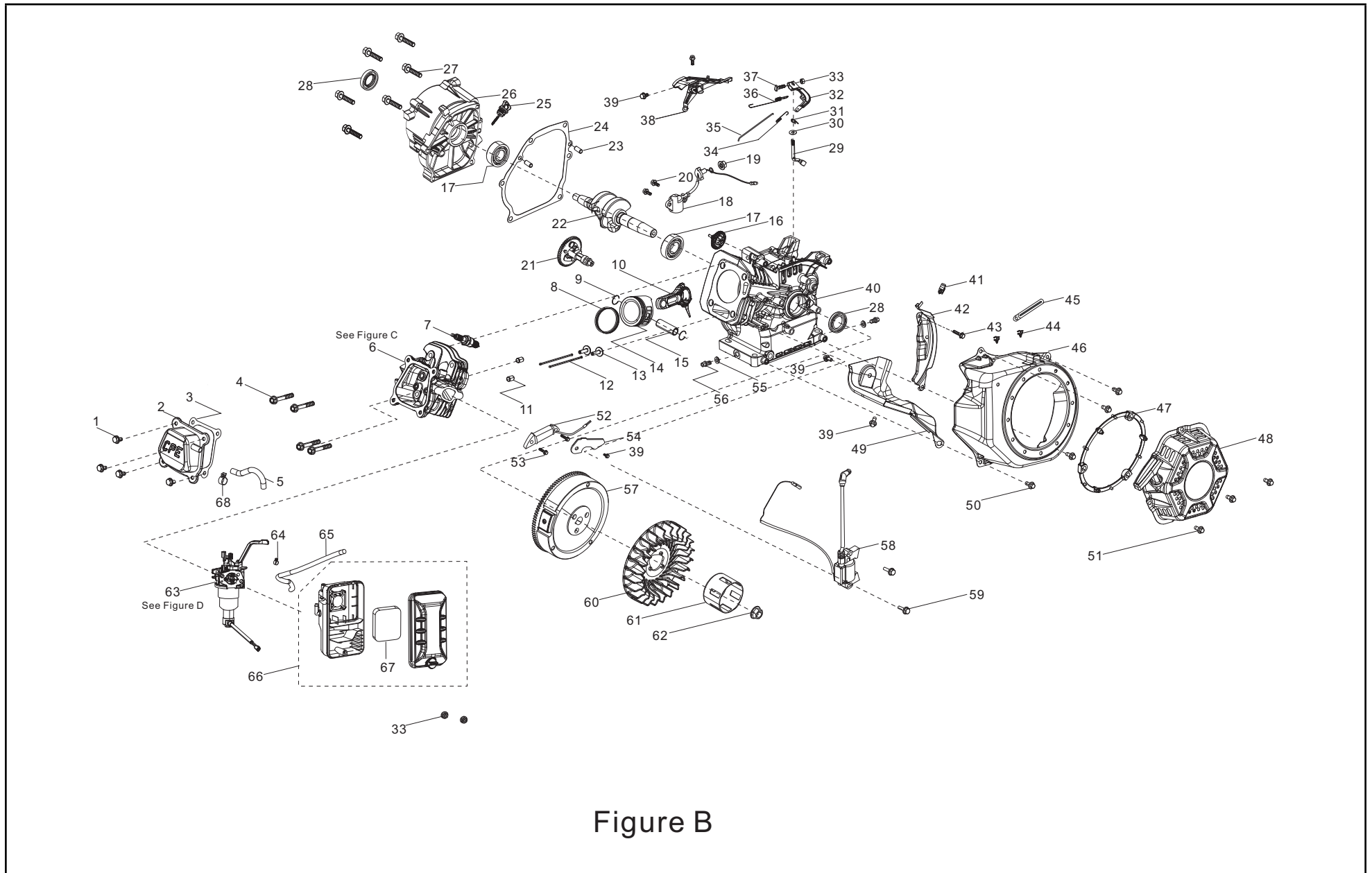
Figure A

GENERATOR PARTS LIST

#	Part Number	Description	Qty.
1	90007-0620-A301	Hexagon Flange Bolt, M6x20, Black Zinc	4
2	90408-Y020110-0005	Flat Washer, Ø6, Black Zinc	4
3	ELYL4E-YXZJ-F000	Fuel Tank Assembly - See Figure F	1
4	ELYL4E-JJZJ-H000	Frame Assembly - See Figure H	1
5	90698-Y1Z0110-0001	Protective Rubber Sleeve	1
6	90685-YJ30110-Q200	Clamp, Ø9.5×Ø8	2
7	16805-YGK0110-0001	Tube, Evaporative, Air Cleaner, Ø6 x Ø10 x 170	1
8	90685-D095-0EAO	Clamp, Ø9.5 × Ø0.8 × Ø8	1
9	90685-D105-0EAO	Clamp, Ø10.5 × Ø0.8 × Ø8	1
10	30351-YGK0110-00A0	Cover, Carbon Canister	1
11	90685-D080-0EAO	Clamp, Ø8.0 × Ø0.6 × Ø7	1
12	90305-0600-0302	Hexagon Flange Nut, M6, Black Zinc	2
13	16801-YGK0110-00A0	Carbon Canister, 400 cc	1
14	17003-Y110130-0001	Bracket, Air Cleaner	1
15	90001-0612-0305	Hexagon Flange Bolt, M6 x 12, Black Zinc	2
16	90106-0408-0000	Screw, M4 x 8, Black Zinc	3
17	18250-YJ30110-0000	Spark Arrestor	1
18	18100-YJA0110-H7A0	Muffler	1
19	90406-0600-E305	Flat Washer, Ø6.4 x Ø18 x 1.6, Black Zinc	1
20	18030-YJ30110-H7A0	Bracket, Muffler	1
21	90001-0816-0305	Hexagon Flange Bolt, M8 x 16, Black Zinc	2
22	18001-Z440110-00A0	Exhaust Outlet Gasket	1
23	90303-0800-3305	Hexagon Nut, M8, Black Zinc	2
24	R225MN000FB-CMP303	Engine, 224cc - Figure B	1
25	ELYL4E-DJZJ-E000	Alternator - See Figure E	1
26	90729-YE40110-00A1	Hose, Ø10 x Ø16.8 x 195	1
27	90748-1016-00A0	Clamp, Ø10 -16	3
28	77100-Z6V0110-0000	LPG regulator	1
29	35610-YJA0110-H200	Control Panel Assembly - See Figure G	1
30	90007-0616-A305	Hexagon Flange Bolt, M6 x 16, Black Zinc	4

#	Part Number	Description	Qty.
31	90134-YB00110-00A0	Bolt, Cross Hexagon Pan Head, M5 x 12, Black Zinc	3
32	16287-YJ30110-0000	Dust Cap	1
33	35643-YJ70110-Q2A0	Dial, Fuel Select	1
34	90254-0416-51A0	Screw And Washer, M4×16, White Zinc	4
35	82007-YJ70110-L400	Decorative Cover	1
36	16750-YJ30110-0000	Fuel Valve Assembly	1
37	90685-D090-0EAO	Clamp, Ø9 x 8 x 0.8	2
38	90124-Y9T0510-00A0	Self Tapping Screw, PT5×16	4
39	16757-YJ30110-Q2A0	Mounting Bracket, Fuel Valve	1
40	35190-YJ70210-0000	Micro Switch 2, Engine Stop	1
41	35190-YJ70110-0000	Micro Switch 1, Engine Stop	1
42	77300-YJ30110-0000	LPG Hose With Regulator	1
43	90001-0625-0305	Hexagon Flange Bolt, M6 x 25, Black Zinc	1
44	30009-Y910110-0001	Grounding Wire	1
45	90303-0600-3305	Hexagon Nut, M6, Black Zinc	1
46	90415-0600-Z301	Lock Washer, Toothed, Black Zinc	1
47	90408-0600-E305	Flat Washer, Black Zinc	3
48	90403-0600-0305	Spring Washer, Black Zinc	2
49	90312-0600-0301	Wing Nut, M6, Black Zinc	1
50	ELYLSE-XSQ-0000	Muffler Assembly	1

ENGINE PARTS DIAGRAM



ENGINE PARTS PART LIST

#	Part Number	Description	Qty.
1	90001-0612-0101	Hexagon Flange Bolt, M6 x 12, White Zinc	4
2	12410-Z010510-0100	Cylinder Head Cover, White Zinc	1
3	12004-Z010210-00A0	Cylinder Head Cover Gasket	1
4	12003-Z010310-0000	Cylinder Head Bolt, M8 x 60, Black Zinc	4
5	17004-Z010110-0001	Tube, Breather, Ø8 x Ø12 x 130	1
6	R225N-QGT-C000	Cylinder Head - See Figure C	1
7	30010-Z010110-0000	Spark Plug, F6RTC	1
8	13200-Z140210-00A9	Piston Ring Assembly	1
9	13122-Z510210-0000	Piston Pin Clip	2
10	13010-Z810210-00A0	Connecting Rod	1
11	90502-1114-00A0	Pin, Ø11 x 14	2
12	14071-Z440110-0000	Valve Lifter	2
13	14081-Z040110-0000	Valve Tappet	2
14	13111-Z810120-00A0	Piston	1
15	13121-Z810110-0000	Piston Pin Clip	1
16	16400-Z810210-0000	Governor Gear Assembly	1
17	90547-0205-00A0	Bearing	2
18	37060-Z010510-0000	Engine oil Sensor, W/O Nut	1
19	90305-Z010210-0300	Hexagon Flange Nut, M10, Black Zinc	1
20	90001-0614-01A0	Hexagon Flange Bolt, M6 x 14, White Zinc	2
21	14200-Z810310-0000	Camshaft Assembly	1
22	13300-Z810110-0000	Crankshaft Assembly	1
23	90502-0912-00A0	Pin, Ø9 x 12	2
24	11001-Z440110-00A0	Crankcase Gasket	1
25	15010-Z2M0110-L400	Oil Dipstick	1
26	11411-Z530111-0BA0	Crankcase Cover	1
27	90001-0832-03	Hexagon Flange Bolt, M8 x 32, Black Zinc	6
28	90682-Z300110-0001	Oil Seal, Ø25 x Ø41.25 x 6	2
29	16061-Z010110-0000	Governor Arm	1
30	90408-Z010210-00A0	Washer, Ø6.2 x Ø15 x 0.6	1

#	Part Number	Description	Qty.
31	90501-Z010110-0001	Pin, White Zinc	1
32	16070-Z010110-0001	Governor Support Assembly, White Zinc	1
33	90305-0600-33	Hexagon Flange Nut, M6, Black Zinc	3
34	16012-Z010310-0000	Spring, Throttle Valve Returning	1
35	16062-Z010110-0001	Governor Rod, White Zinc	1
36	16063-Z010910-0100	Spring, Governor, Ø6 x Ø0.85 x 115	1
37	16072-Z010310-0000	Governor Support Bolt, M6 x 21, Black Zinc	1
38	16520-Z4A0111-0000	Air Guide, Engine Fan, White Zinc	1
39	90001-0610-03	Hexagon Flange Bolt, M6 x 10, Black Zinc	5
40	11310-Z810410-0BA0	Crankcase	1
41	90740-Z010110-0001	Clamp	1
42	19340-Z050210-0001	Air Guide, White Zinc	1
43	90001-0616-01A0	Hexagon Flange Bolt, M6 x 16, White Zinc	1
44	90685-Z940310-0001	Clamp	2
45	90684-Z010310-0001	Clip, Ø6 x 10.6 x 130	1
46	28110-Z011210-L400	Cover, Engine Fan, PMS 109C	1
47	28261-Z2M0110-0000	Retainer Ring, Recoil Starter	1
48	28200-Z141010-H200	Recoil Assembly	1
49	19304-Z010610-0001	Cylinder Body Shroud	1
50	90001-0612-03	Hexagon Flange Bolt, M6 x 12, Black Zinc	4
51	90251-0618-03	Bolts & Washer, Black Zinc	3
52	30140-Z160610-0000	Charging Coil	1
53	90001-0628-01A0	Hexagon Flange Bolt, M6 x 28, White Zinc	2
54	30001-Z200110-0000	Plate, Charging Coil	1
55	90408-Z010110-00A0	Washer, Ø10 x Ø15.8 x 1.5	2
56	11007-Z010310-0000	Drain Plug Bolt, M10 x1.25 x15, Black Zinc	2
57	13510-Z440910-00A0	Flywheel	1
58	30400-Z441110-0000	Ignition Coil	1
59	90001-0625-01A0	Hexagon Flange Bolt, M6 x 25, White Zinc	2
60	19352-Z440110-0001	Fan, Engine Cooling	1

#	Part Number	Description	Qty.
61	28002-Z1E0110-0000	Starter Pulley, White Zinc	1
62	13501-Z010110-00A0	Nut, M14 x 1.5, White Zinc	1
63	R225N-HYQ-D000	Carburetor Assembly-See Figure D	1
64	90748-1016-00A0	Clamp, Ø10 x 16	1
65	90729-Z6V0110-0000	Tube, Vent, Ø9.5 x Ø16.8 x 320	1
66	17100-Z2M0110-0000	Air Cleaner Assembly	1
67	17151-Z300310-0000	Element, Air Cleaner	1
68	90685-Z030110-0100	Clamp, Ø10.5 x 1, White Zinc	1

CYLINDER HEAD PART DIAGRAM

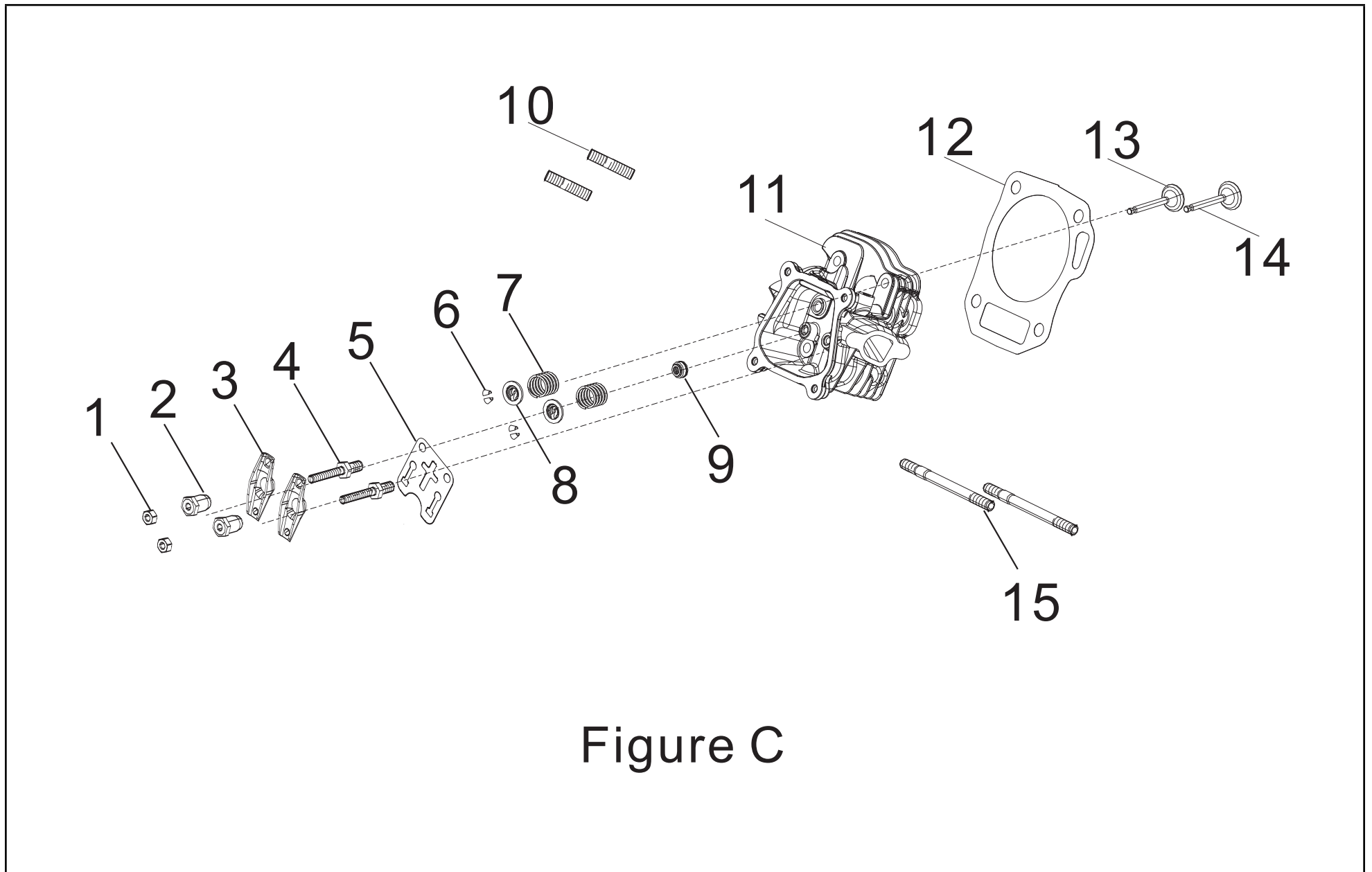


Figure C

CYLINDER HEAD PART LIST

#	Part Number	Description	Qty.
1	14312-Z010110-0000	Valve Lock Nut	2
2	14314-Z010110-0000	Valve Adjusting Nut	2
3	14311-Z010110-0000	Valve Rocker Arm	2
4	14313-Z010110-0000	Valve Adjusting Bolt	2
5	14090-Z010110-0000	Lifter Stopper Plate Subassembly, White Zinc	1
6	12109-Z810110-0000	Valve Lock Clamp	4
7	12103-Z010110-00A0	Valve Spring	2
8	12112-Z810210-0000	Valve Spring Retainer	2
9	12101-Z810210-0000	Seal Guide	1
10	90203-Z010110-0000	Stud, M8 x 34, Black Zinc	2
11	12140-Z810510-0BA0	Cylinder Head	1
12	12131-Z950210-0000	Cylinder Head Gasket	1
13	12121-Z810120-00A0	Exhaust Valve	1
14	12111-Z810110-00A0	Intake Valve	1
15	90204-Z010210-0000	Stud, M6 x 96, Black Zinc	2

CARBURETOR PART DIAGRAM

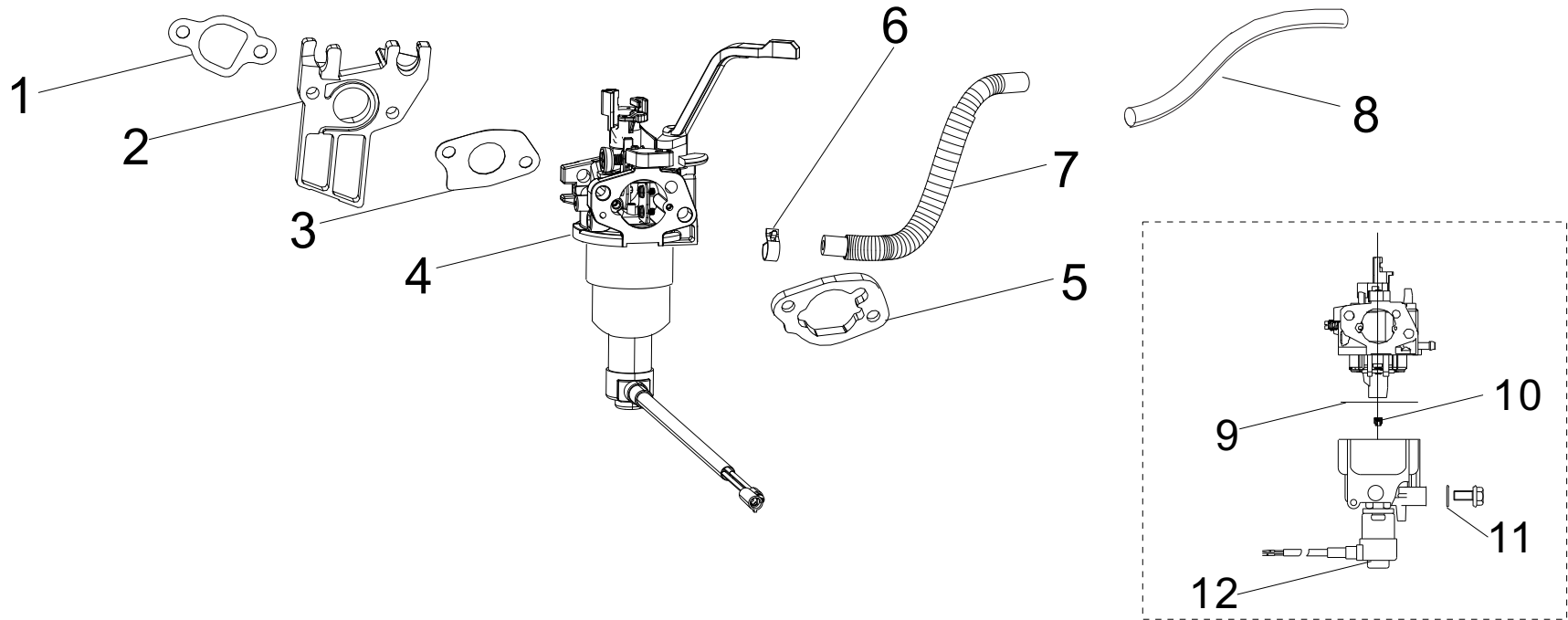


Figure D

CARBURETOR PART LIST

#	Part Number	Description	Qty.
1	16002-Z050110-0000	Carburetor Insulator Gasket	1
2	16003-Z010110-0000	Carburetor Insulator Plate	1
3	16001-Z010110-0000	Carburetor Gasket	1
4	16100-Z6V0110-00M0	Carburetor Assembly	1
5	17001-Z010210-0000	Air Cleaner Gasket	1
6	90685-D090-0EAO	Clamp	1
7	90686-Z6V0210-00M0	Fuel Tube, Ø4 x Ø10 x 415	1
8	30431-Z120310-0000	Rubber Sleeve, Ø13 x Ø11.5 x 180	1
9	16112-Z010110-0000	Seal Ring, Float	1
10	16161-Z151810-00A5	Main Jet (77#), Standard	1
	16161-Z151610-00A8	Main Jet (75#), Altitude 3000-6000 Feet	/
	16161-Z151410-00A2	Main Jet (73#), Altitude 6000-8000 Feet	/
11	90681-Z010510-0000	Seal Ring	1
12	16108-Z080110-0000	Valve, Solenoid	1

ALTERNATOR DIAGRAM

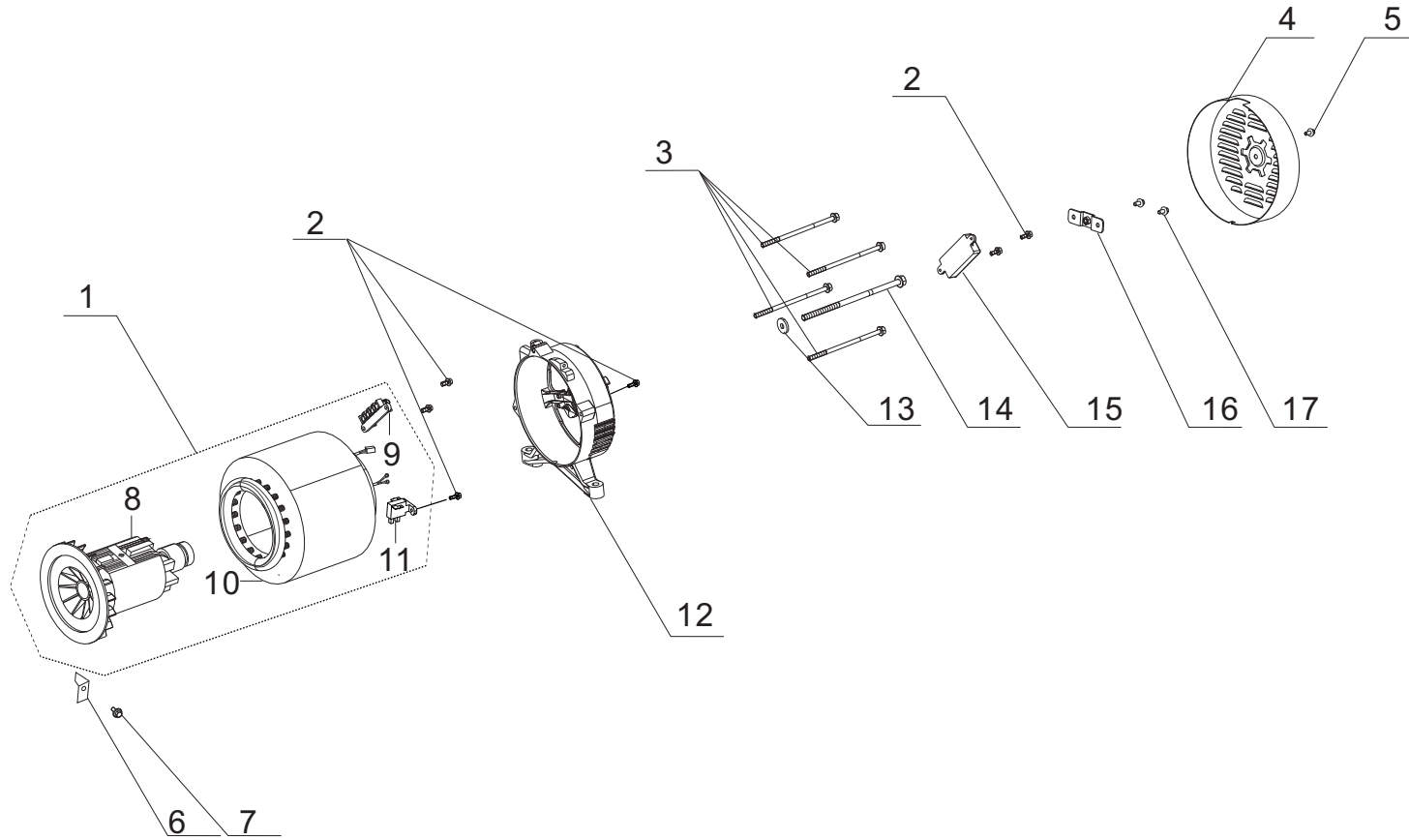


Figure E

ALTERNATOR PART LIST

#	Part Number	Description	Qty.
1	31300-YJA0110-0000	Alternator Assembly, AL, Ø160 x 130	1
2	90001-0516-01A1	Hexagon Flange Bolt, M5 x 16, Black Zinc	6
3	30048-YE30110-0900	Bolt, M6 x 174, Stator, White Zinc	4
4	30022-YJ30110-L400	Cover, End Housing, PMS 109C	1
5	90007-0508-A301	Hexagon Flange Bolt, M5 x 8, Black Zinc	1
6	30023-Y020110-0900	Stopper, Motor Right Cover	1
7	90001-0612-0305	Hexagon Flange Bolt, M6 x 12, Black Zinc	1
8	31330-YJA0110-0000	Rotor, AL, Ø160 x 130	1
9	31303HY020110-0000	Terminal Block	1
10	31310-YJA0110-0000	Stator Assembly, AL, Ø160 x 130	1
11	31320-YGK0110-0000	Carbon Brush Assembly	1
12	30021-YJ30110-00A0	End Housing	1
13	90408-Y020210-0001	Flat Washer, Black Zinc	1
14	30049-YE30110-0001	Bolt, M8 x 230, Rotor, White Zinc	1
15	30060-YGK0110-0000	AVR	1
16	51124HYJ30110-0100	Mounting Bracket, White Zinc	1
17	90005-0512-01A1	Hexagon Flange Bolt, M5 x 12, White Zinc	2

FUEL TANK PART DIAGRAM

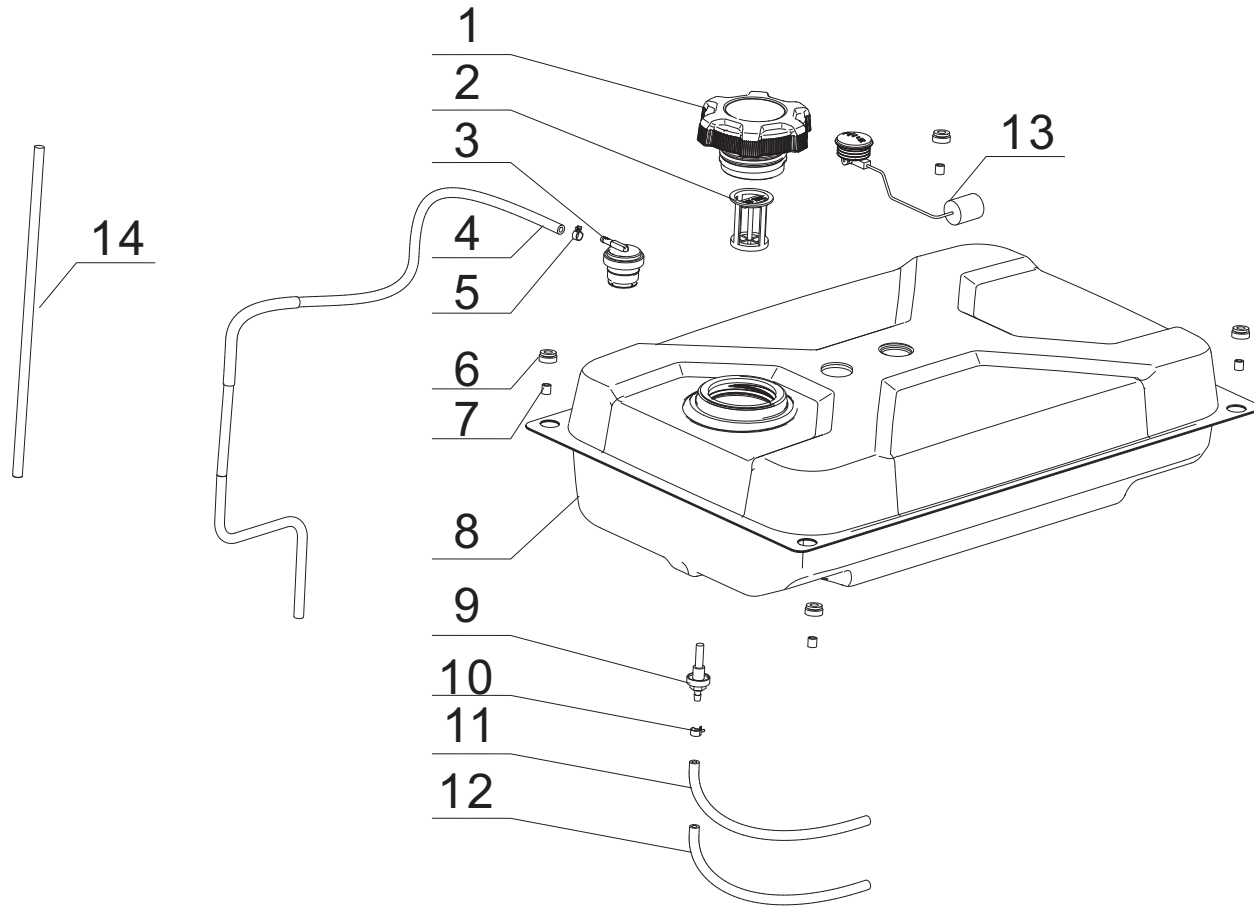


Figure F

FUEL TANK PART LIST

#	Part Number	Description	Qty.
1	16730-YGM0110-00A0	Fuel Tank Cap	1
2	16652-YGM0110-00A0	Fuel Filter	1
3	15150-YGK0110-00A0	Valve, Reversal	1
4	16804-YGK0210-0000	Tube, Vent, Ø4.5 × Ø8.5 × 810	1
5	90740-Z010610-00A1	Clamp, Ø9	1
6	16601-Y020210-0001	Rubber Sleeve, Vibration Mount, Fuel Tank	4
7	90683-Y020210-0100	Bushing, White Zinc	4
8	16620-YGK0310-L4A0	Fuel Tank, PMS 109C	1
9	16680-YJ30110-00A0	Fitting, Fuel Tank	1
10	90685-D105-0EAO	Clamp, Ø10.5×8×0.8, Black Zinc	1
11	90686-YJA0210-00M0	Fuel Tube, Ø4 × Ø10 × 250	1
12	30431-Z120310-0000	Rubber Sleeve, Ø13 x Ø11.5x 180	1
13	37200-YJ30110-00A0	Fuel Gauge	1
14	30431-YCM0310-0001	Rubber Sleeve, Ø9.5 x Ø11 x 150	1

OUTLET PANEL PART DIAGRAM

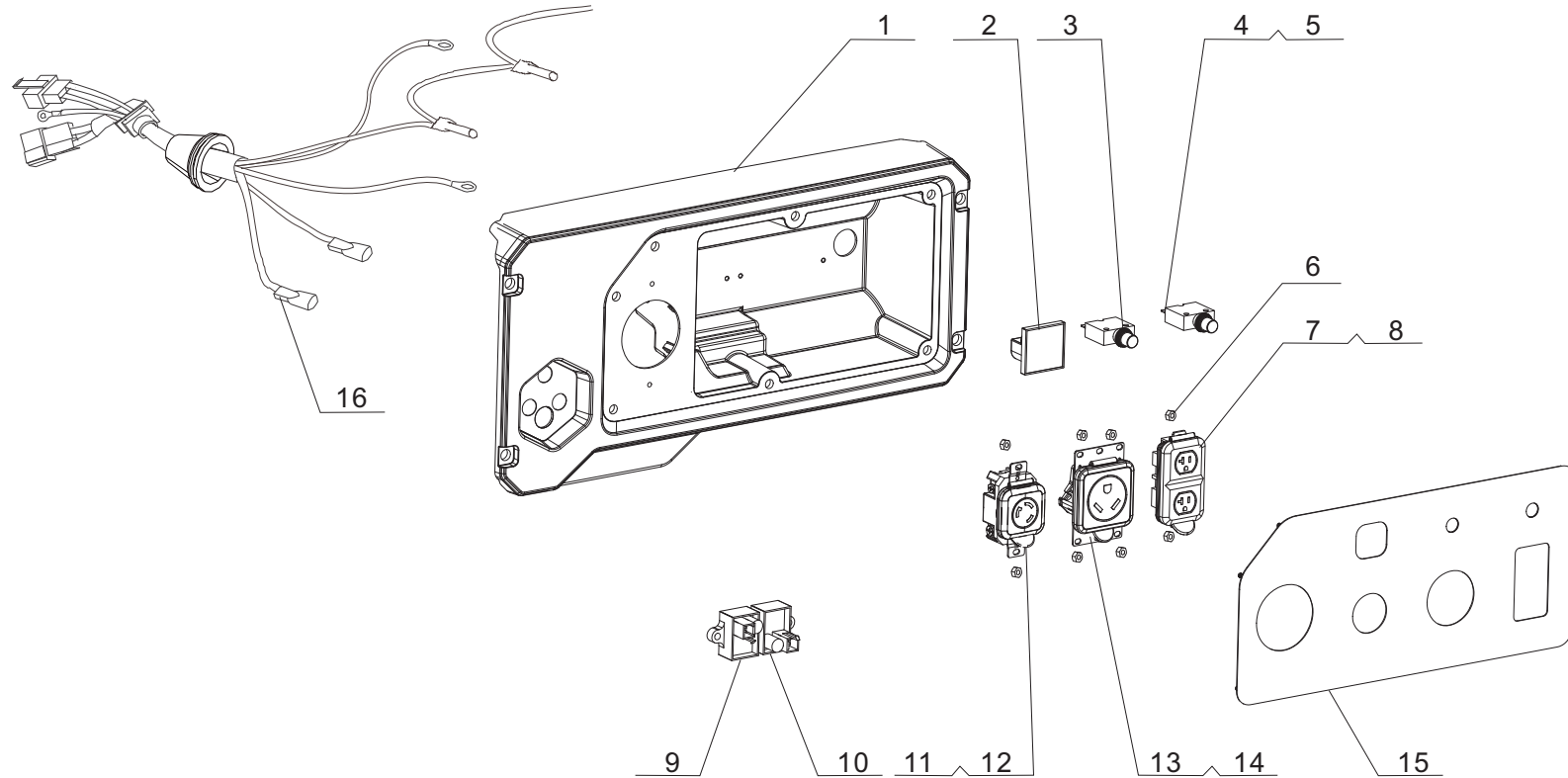
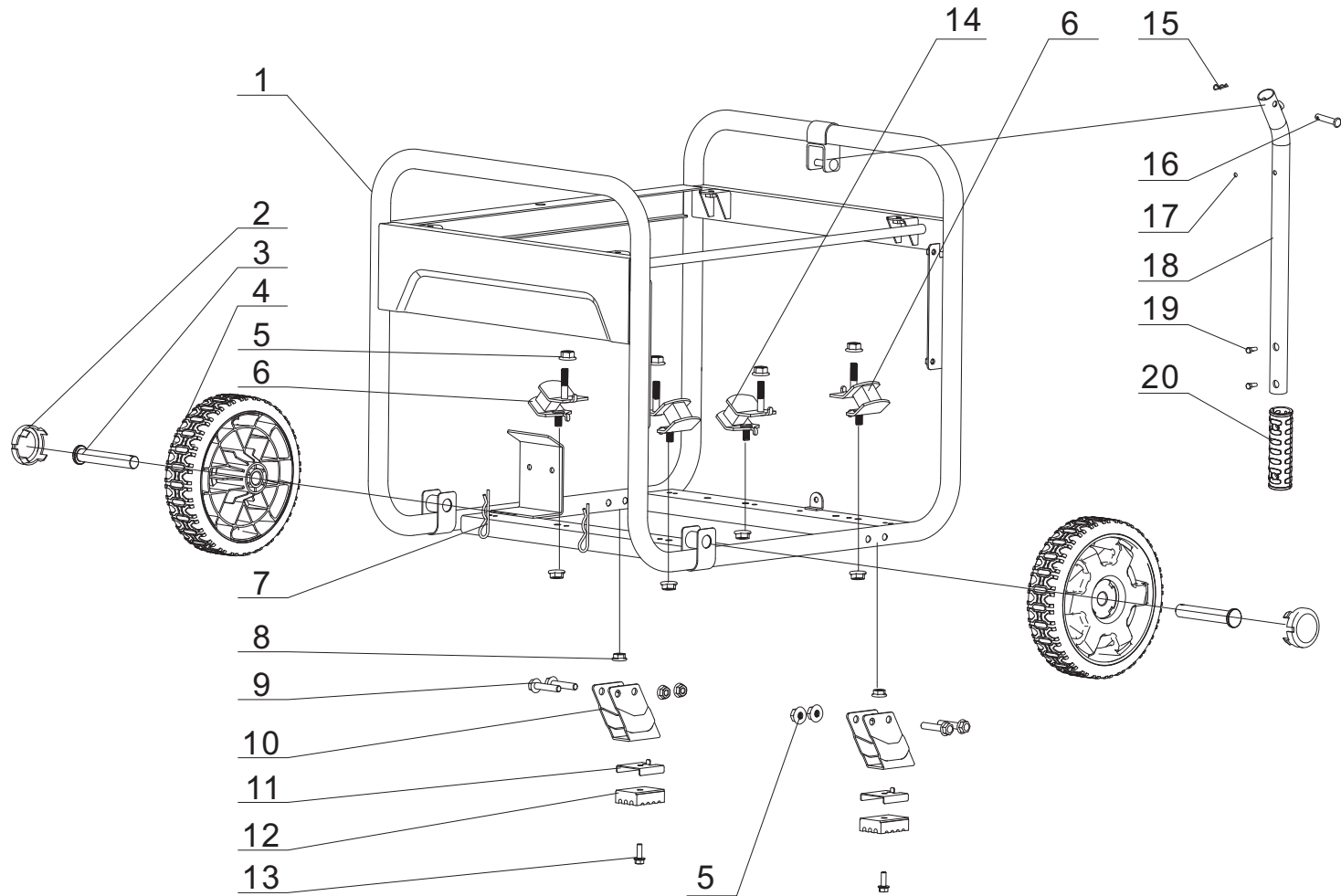


Figure G

OUTLET PANEL PART LIST

#	Part Number	Description	Qty.
1	35680-YJA0110-Q2A0	Control Panel Housing	1
2	35632-YGK0110-0000	Intelligauge	1
3	31234-YGK0110-0000	30Amp Circuit Breaker, Push Button	1
4	31234-YBE0210-0000	20Amp Circuit Breaker, Push Button	1
5	35654-YGK0110-0000	Cover, Push Button	2
6	90305-0400-71A0	Hexagon Flange Nut, M6, White Zinc	8
7	35654-YBE0110-0000	Receptacle Cover, 5-20R	1
8	35614-Y730110-0000	5-20R Receptacle, 20A, 125V	1
9	30008-YJ30110-0000	Control Module, Ignition Coil, OV0402	1
10	30008-YJP0110-0000	Control Module, Carburetor, EV02	1
11	35654-YGK0210-0000	Receptacle Cover,L5-30R	1
12	35614-Y090210-0000	L5-30R Receptacle,30A,125V	1
13	35654-YGK0310-0000	Receptacle Cover, TT-30R	1
14	35614-Y2D0110-0000	TT-30R Receptacle, 30A, 125V	1
15	35650-YJA0110-H200	Control Panel	1
16	35660HYJA0100-0000	Wire harness, Control Panel	1

FRAME PART DIAGRAM



FigureH

FRAME PART LIST

#	Part Number	Description	Qty.
1	51100-YJA0110-H2A0	Frame	1
2	44001-V580110-L400	Cover, Hub Decorated, PMS 109C	2
3	44020-Y9X0110-0306	Roll Pin, Ø16 x 89.5, Black Zinc	2
4	44110-V580110-0000	8in, Wheel, PMS 109C	2
5	90305-0800-3305	Hexagon Flange Nut, M8, Black Zinc	12
6	51005HY020120-0000	Vibration Mount 1, Frame	2
7	90501-Y2C0110-03A1	Pin, Black Zinc	2
8	90305-0600-0302	Hexagon Flange Nut, M6, Black Zinc	2
9	90001-0840-0301	Hexagon Flange Bolt, M8 x 40, Black Zinc	4
10	51016-YJ30110-H2A0	Support Leg, Frame	2
11	24329-YJ70110-H200	Block 1	2
12	51014-YJ70110-0000	Vibration Mount 1, Support Leg	2
13	90001-0620-0305	Hexagon Flange Bolt, M6 x 20, Black Zinc	2
14	51011HY020120-0000	Vibration Mount 2, Frame	2
15	90583-YGK0110-03A0	R Pin, Ø2 x 35, Black Zinc	1
16	90504-YGK0110-0300	Pin Shaft, Ø8 x 40	1
17	90722-YEC0110-0001	Plug, Handle	1
18	54110HYJA0110-H2A0	Handle, Ø25 x 1.2	1
19	90103-0416-5301	Screw, M4 x 16, Black Zinc	2
20	54101HYGK0110-L400	Grip, Handle	1

WIRING DIAGRAM

