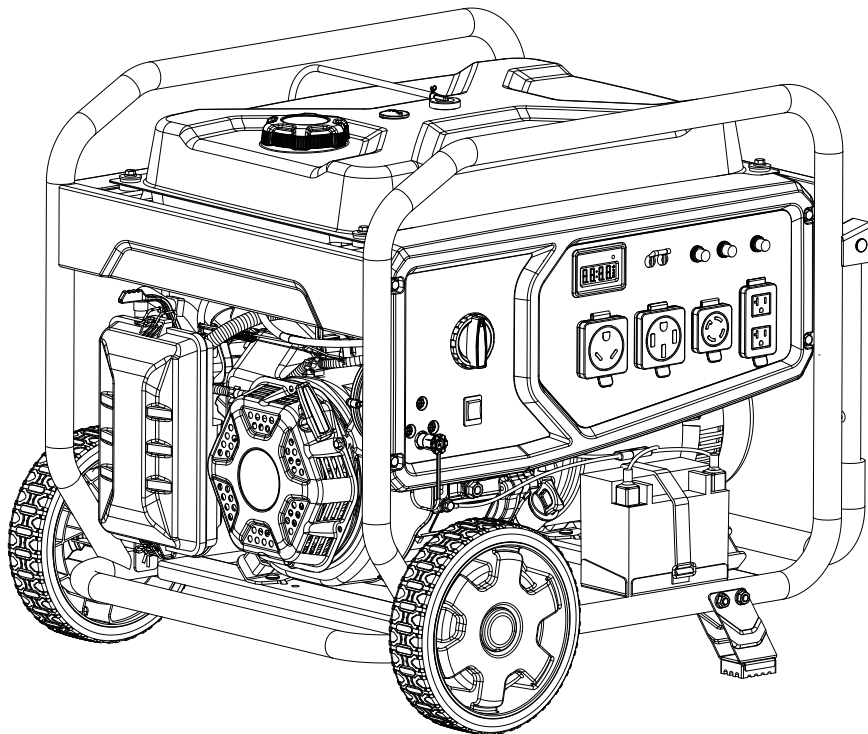


Cabela's[®]

MODEL #201007



PARTS INFORMATION

9000W DUAL FUEL PORTABLE GENERATOR

SERIAL NUMBER RANGE: ALL



To order replacement parts please visit:
shop.championpowerequipment.com
or call **1-877-338-0999**.

POWERED by
CHAMPION
POWER EQUIPMENT

REV 20220912

TABLE OF CONTENTS

Generator Parts Diagram	3
Generator Parts List	4
Engine Parts Diagram	5
Engine Parts List	6
Cylinder Head Parts Diagram	8
Cylinder Head Parts List	9
Carburetor Parts Diagram	10
Carburetor Parts List	11
Alternator Parts Diagram	12
Alternator Parts List	13
Fuel Tank Parts Diagram	14
Fuel Tank Parts List	15
Control Panel Parts Diagram	16
Control Panel Parts List	17
Frame Assembly Parts Diagram	18
Frame Assembly Parts List	19
Wiring Diagram	20

GENERATOR PARTS DIAGRAM

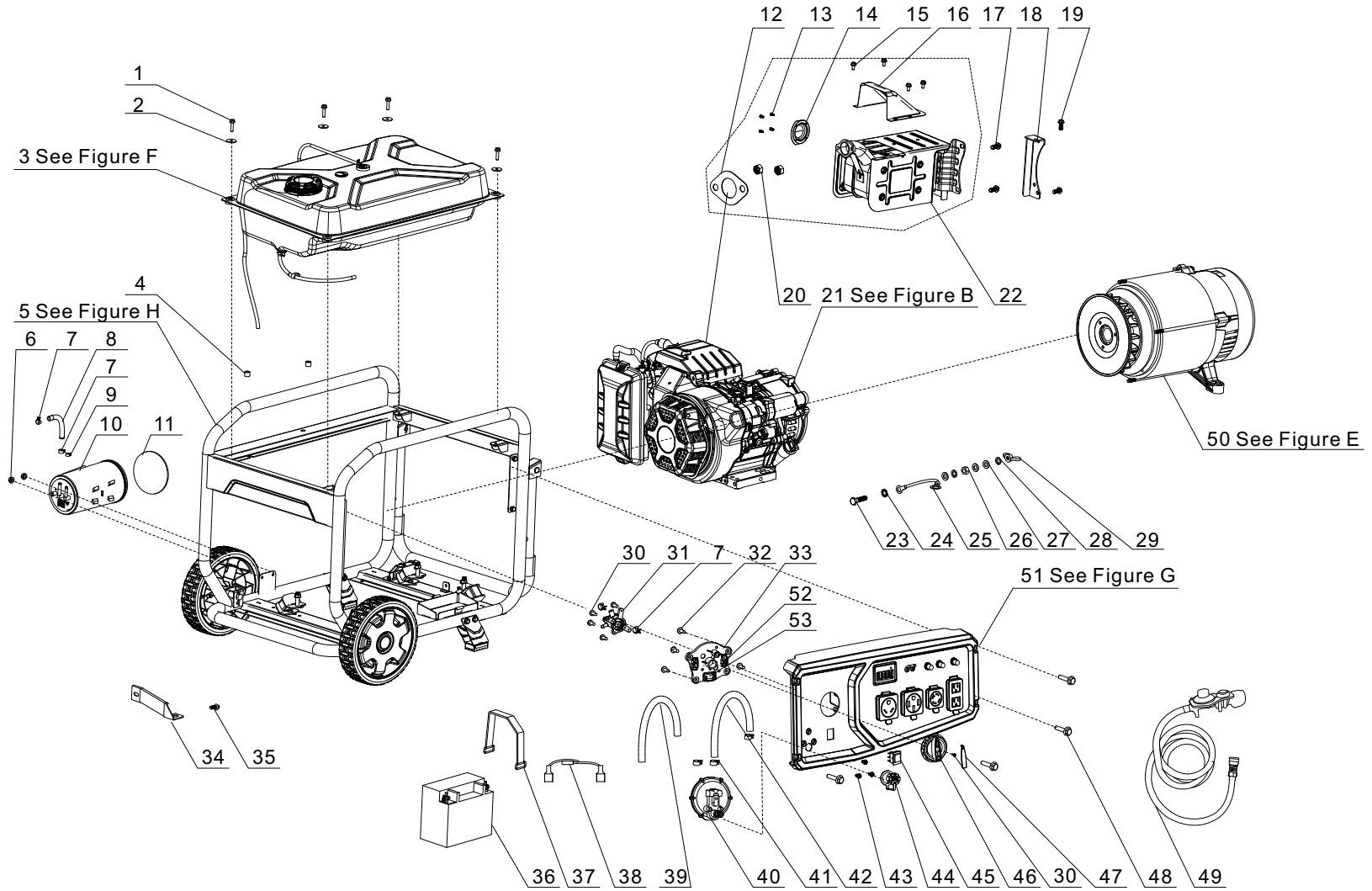


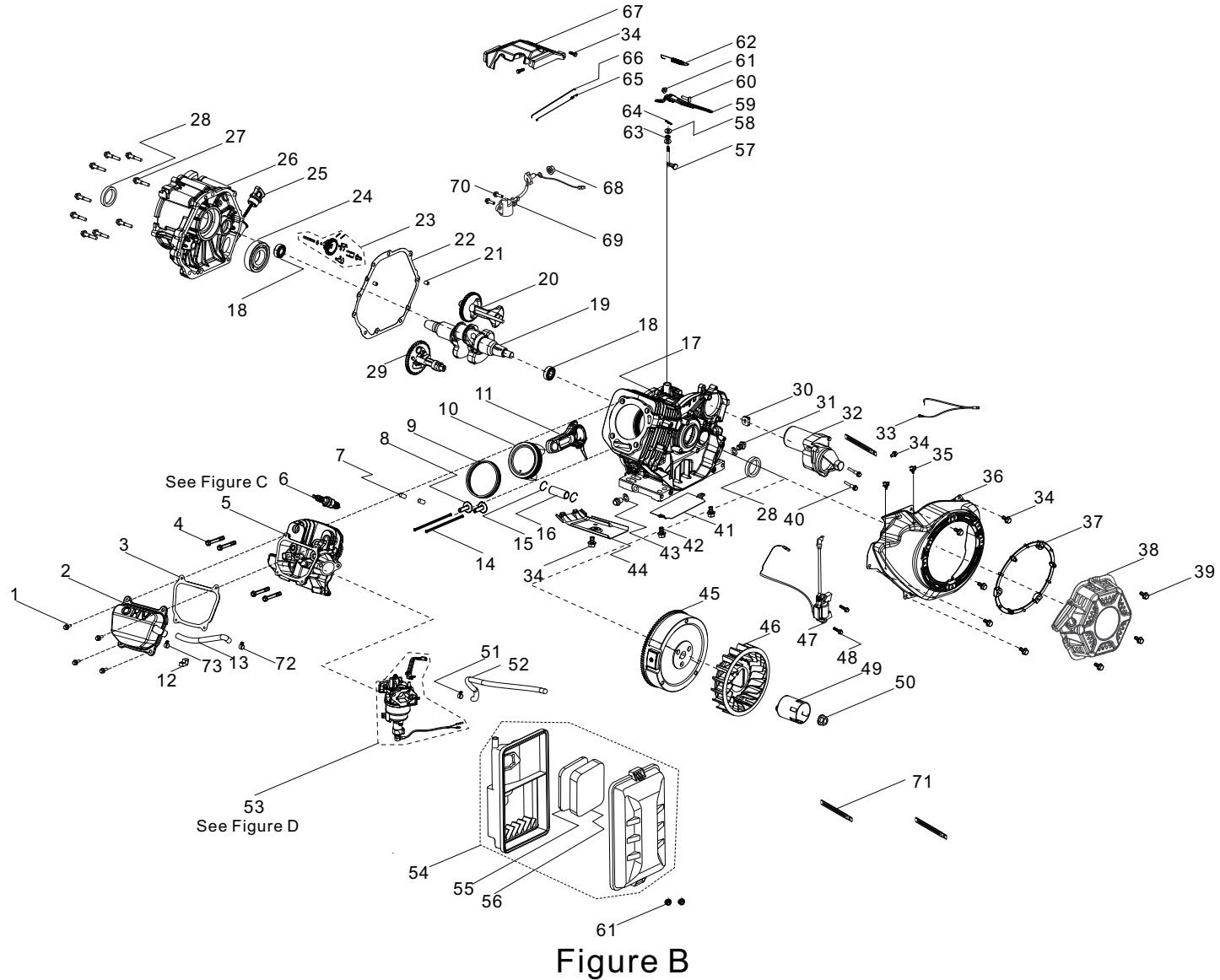
Figure A

GENERATOR PARTS LIST

#	Part Number	Description	Qty.
1	90007-0625-0301	Hexagon Flange Bolt, M6 x 25, Black Zinc	4
2	90408-Y020110-0005	Flat Washer, Ø6, Black Zinc	4
3	96003-ZSS0810-0000	Fuel Tank Assembly - See Figure F	1
4	90698-Y1Z0110-0002	Protective Rubber Sleeve	2
5	96003-ZSS0910-0000	Frame Assembly - See Figure H	1
6	90305-0600-33A0	Hexagon Flange Nut, M6, Black Zinc	2
7	90685-D090-0EA0	Clamp, Ø9×8×0.8	4
8	16805-YJ90110-0000	Tube, Air Cleaner, Ø4.5×Ø8.5×90	1
9	90685-D080-0EA0	Clamp, Ø8×7×0.6	1
10	16801-YDK0110-00A1	Carbon Canister, 400 cc	1
11	82153-YGM0110-00A0	Heat Film	1
12	18101-Z0D0310-00A0	Muffler Gasket	1
13	90026-0510-53	Hexagon Flange Bolt, M5 x 10, Black Zinc	4
	S/N≤RV2201150001		
	90139-0510-0900		
	S/N>RV2201150001		
14	18250-YGM0110-0000	Spark Arrestor	1
15	90007-0612-A301	Hexagon Flange Bolt, M6 x 12, Black Zinc	4
16	80019-YJP0210-H7A0	Guide Hood, Muffler	1
17	90001-0816-0305	Hexagon Flange Bolt, M8 x 16, Black Zinc	2
18	18030-YJ70110-0900	Muffler Bracket	1
19	90001-0816-0109	Hexagon Flange Bolt, M8 x 16, Black Zinc	2
20	90303-0800-0301	Hexagon Nut, M8, Black Zinc	2
21	RZ6D0B-00000020CMP	Engine Assembly, 458 cc - See Figure B	1
22	18100-YGM0210-H7A0	Muffler Assembly	1
	S/N≤RV2201150001		
	18100-YGM0213-H7A0		
	S/N>RV2201150001		
23	90001-0625-0305	Hexagon Flange Bolt, M6 x 25, Black Zinc	1
24	90415-0600-Z301	Lock Washer, Toothed, Black Zinc	1

#	Part Number	Description	Qty.
25	30009-Y910110-0000	Grounding Wire	1
26	90303-0600-3305	Hexagon Flange Nut, M6, Black Zinc	1
27	90408-0600-E305	Flat Washer, Black Zinc	3
28	90403-0600-0305	Spring Washer, Black Zinc	2
29	90312-0600-0301	Wing Nut, M6, Black Zinc	1
30	90254-0416-51A0	Screw Assembly, M4×16, White Zinc	4
31	16750-YJ70111-0000	Fuel Valve Assembly	1
32	90124-Y9T0510-00A0	Tapping Screw, PT5×16	4
33	16757-YJ30110-Q2A0	Mounting Plate, Fuel Valve	1
34	17003-YJ70110-0100	Air Cleaner Support	1
35	90001-0612-0305	Hexagon Flange Bolt, M6 x 12, Black Zinc	1
36	31110-Y9X0110-00A0	Battery, 12VDC / 14Ah	1
37	31115-Y6D0110-0001	Band, Battery	1
38	31112HYGM0210-0000	DC Wire Harness, Battery	1
39	30431-YDK0110-0000	Rubber Sleeve, Ø20 x 110	1
40	77100-Z6D0110-0000	Regulator	1
41	90748-1016-00A0	Clamp, Ø10×16	3
42	90729-YJ90110-0000	Vent Pipe, Ø9.5×Ø16.8×250	1
43	90134-YB00110-00A0	Cross Hexagon Pan Head Bolt, M5 x 12, Black Zinc	3
44	16287-YJ30110-0000	Dust Cap	1
45	35160-YJ10110-0000	Switch Combination	1
46	35643-YJ70111-Q2A0	Knob, Fuel Select	1
47	82007-YJ70110-J300	Decorative Cover, PMS 4195C	1
48	90007-0616-A305	Hexagon Flange Bolt, M6 x 16, Black Zinc	4
49	77300-YJ70110-0000	LPG Hose with Regulator	1
50	96003-ZSS1010-0000	Alternator - See Figure E	1
51	35610-YJ70310-H700	Control Panel Assembly - See Figure G	1
52	35190-YJ70210-0000	Microswitch 1, Engine Stop	1
53	35190-YJ70110-0000	Microswitch 2, Engine Stop	1

ENGINE PARTS DIAGRAM



ENGINE PARTS LIST

#	Part Number	Description	Qty.
1	90001-0612-0101	Hexagon Flange Bolt, M6 x 12, White Zinc	4
2	12410-Z0D0110-01A0	Cylinder Head Cover Subassembly, White Zinc	1
3	12004-Z0J0510-0000	Cylinder Head Cover Gasket	1
4	12003-Z0N0110-0100	Cylinder Head Bolt, M10x 1.25x85, White Zinc	4
5	96003-ZSS0610-0000	Cylinder Head, See Figure C	1
6	30010-Z010110-00A0	Spark Plug, F6RTC	1
7	90502-1220-00A0	Pin, Ø12 x 20	2
8	14081-Z080110-0000	Valve Tappet	2
9	13200-Z0J0110-00A0	Piston Ring Assembly	1
10	13111-Z6B0110-00A0	Piston	1
	S/N≤RV2206085168		
	13111-Z6B0210-00A0		
	S/N>RV2206085168		
11	13010-Z6B0110-00A0	Connecting Rod	1
	S/N≤RV2206085168		
	13010-Z6B0210-00A0		
	S/N>RV2206085168		
12	90804-Y5Z0210-0001	Limit Clamp	1
13	17004-Z0D0310-0000	Tube, Breather	1
14	14070-Z0D0110-0000	Valve Lifter	2
15	13122-Z100110-0000	Piston Pin Clip	2
16	13121-Z570110-0000	Piston Pin	1
	S/N≤RV2206085168		
	13121-Z100110-00A0		
	S/N>RV2206085168		
17	11310-Z6B0110-0BA0	Crankcase Subassembly	1
18	90548-0202-00A0	Bearing	2
19	13300-Z0D0110-00A0	Crankshaft Assembly	1
20	13401-Z0D0110-0000	Balancing Shaft	1
21	90502-0812-00A0	Pin, Ø8x 12	2

#	Part Number	Description	Qty.
22	11001-Z0D0110-0000	Crankcase Gasket	1
23	16400-Z100110-0000	Governor Gear Assembly	1
24	90547-6208-00A1	Bearing	1
25	15010-Z0D0110-Q200	Oil Dipstick Subassembly	1
26	11411-Z0D0110-0BA0	Crankcase Cover	1
	S/N≤RV2206085168		
	11411-Z0D0110-0BA1		
	S/N>RV2206085168		
27	90001-0840-03	Hexagon Flange Bolt, M8 x 40, Black Zinc	9
28	90682-Z0J0110-0001	Oil Seal, Ø50 x Ø40 x 9	2
29	14200-Z0D0110-0009	Camshaft Assembly	1
30	28101-Z080110-0001	Plug, Rubber	1
31	11007-Z080110-0300	Drain Plug Bolt, M12x18, Black Zinc	2
32	09100-Z170310-0100	Starter Motor	1
33	31114HYGM0110-0001	DC Wire Harness, Engine	1
34	90001-0612-03	Hexagon Flange Bolt, M6 x 12, Black Zinc	9
35	90685-Z940310-0001	Clamp 2	2
36	28110-Z710710-J300	Cover, Engine Fan, PMS 4195C	1
37	28261-Z980110-0001	Retainer Ring, Recoil Starter	1
38	28200-Z590110-H700	Recoil Starter Assembly, , Flat Black C, Black Handle Insert	1
39	90001-0620-03	Hexagon Flange Bolt, M6 x 20, Black Zinc	3
40	90001-0835-0102	Hexagon Flange Bolt, M8 x 35, White Zinc	2
41	19306-Z0D0110-0100	Crankcase Air Deflector, White Zinc	1
42	90001-0610-03	Hexagon Flange Bolt, M6 x 10, Black Zinc	2
43	90412-Z080110-00A0	Washer, Ø21x Ø12x 2	2
44	19304-Z100210-0101	Cylinder Body Shroud	1
45	13510-Z0D0410-0000	Flywheel Subassembly	1
46	19352-Z100120-00A2	Engine Fan	1
47	30400-Z0D0110-0000	Ignition Coil	1

#	Part Number	Description	Qty.
48	90001-0628-01A0	Hexagon Flange Bolt, M6 x 28, White Zinc	2
49	28002-Z0D0110-0000	Starter Pulley, White Zinc	1
50	13501-Z080110-00A0	Flywheel Nut, M16 x 1.5, White Zinc	1
51	90748-1016-00A0	Clamp 1	1
52	90729-Z6D0112-0000	Vent Pipe, Ø9.5xØ16.8x460	1
53	96003-ZSS0710-0000	Carburetor, See Figure D	1
54	17100-Z0D0210-0000	Air Cleaner Assembly	1
55	17151-Z0D0210-0000	Element, Air Cleaner 1	1
56	17151-Z0D0310-0000	Element, Air Cleaner 2	1
57	16061-Z0D0110-0000	Governor Arm	1
58	90412-Z080210-00A0	Washer, Ø19.5x Ø8.4x 0.8	2
59	16070-Z100120-0001	Governor Support Subassembly, White Zinc	1
	SN≤RV2206085168		
	16070-Z100310-01A0		
	SN>RV2206085168		
60	16072-Z010310-0000	Governor Support Bolt, M6 x 21, Black Zinc	1
61	90305-0600-33	Hexagon Flange Nut, M6, Black Zinc	3
62	16063-Z0D0110-0100	Spring, Governor	1
63	90682-Z100210-0001	Oil Seal, Ø14 x Ø8x 4	1
64	90501-Z010110-0001	Pin, White Zinc	1
65	16012-Z080110-0000	Throttle Valve Returning Spring	1
66	16062-Z100110-0001	Governor Rod, White Zinc	1
67	16520-Z0D0110-0100	Air Guide, Engine Fan, White Zinc	1
68	90305-Z010210-0300	Hexagon Flange Nut, M10, Black Zinc	1
69	37060-Z080410-0000	Engine oil Sensor, W/O Nut	1
70	90001-0616-01A0	Hexagon Flange Bolt, M6 x 16, White Zinc	2
71	90684-Z010310-0001	Clip, Ø6 x 10.6x 130	3
72	90685-Z0D0110-0001	Clip, Ø16 x 1.6	1
73	90685-Z130210-01A0	Clip, Ø17 x 1.4	1

CYLINDER HEAD PARTS DIAGRAM

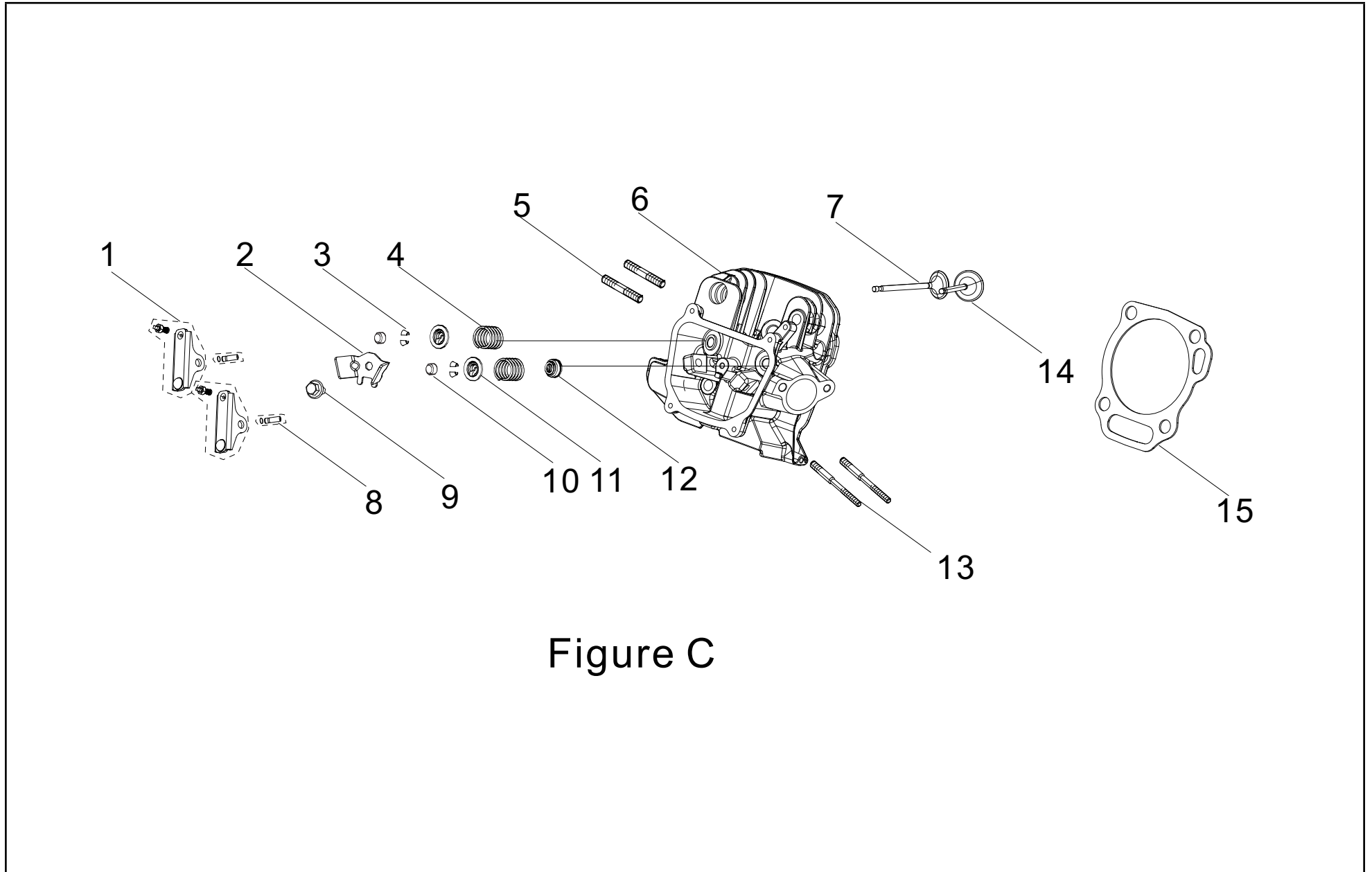


Figure C

CYLINDER HEAD PARTS LIST

#	Part Number	Description	Qty.
1	14310-Z0D0110-00A0	Valve Rocker Arm	2
2	12419-Z950311-00A0	Pin Stopper Plate, Cylinder Head Cover	1
3	12109-Z0D0110-00A0	Valve Lock Clamp, Ø5.5 x Ø9	4
4	12103-Z990110-00A0	Valve Spring	2
5	90203-Z010110-0301	Stud, M8 x 34, Black Zinc	2
6	12140-Z6B0110-0BA0	Cylinder Head	1
	SN≤RV2206075180		
	12140-Z6B0210-0BA0		
	SN>RV2206075180		
7	12121-Z6B0110-00A0	Exhaust Valve	1
8	14318-Z990111-00A0	Rocker Arm Shaft Assembly	2
9	90001-0612-03	Hexagon Flange Bolt, M6 x 12, Black Zinc	1
10	12104-Z010110-00A0	Lash Cap, Valve	2
11	12112-Z0D0110-00A0	Valve Spring Retainer	2
12	12101-Z020110-00A0	Valve Seal Guide	1
13	90204-Z100410-00A0	Stud, M6/M8 x 110, Black Zinc	2
14	12111-Z0D0210-00A0	Intake Valve	1
15	12131-Z6B0110-00A0	Cylinder Head Gasket	1

CARBURETOR PARTS DIAGRAM

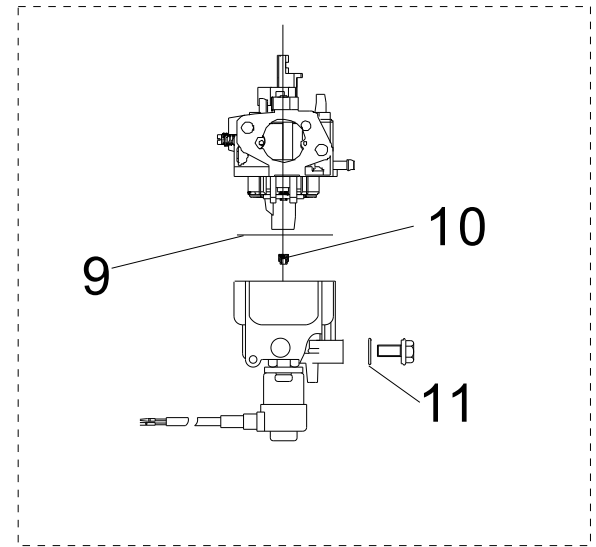
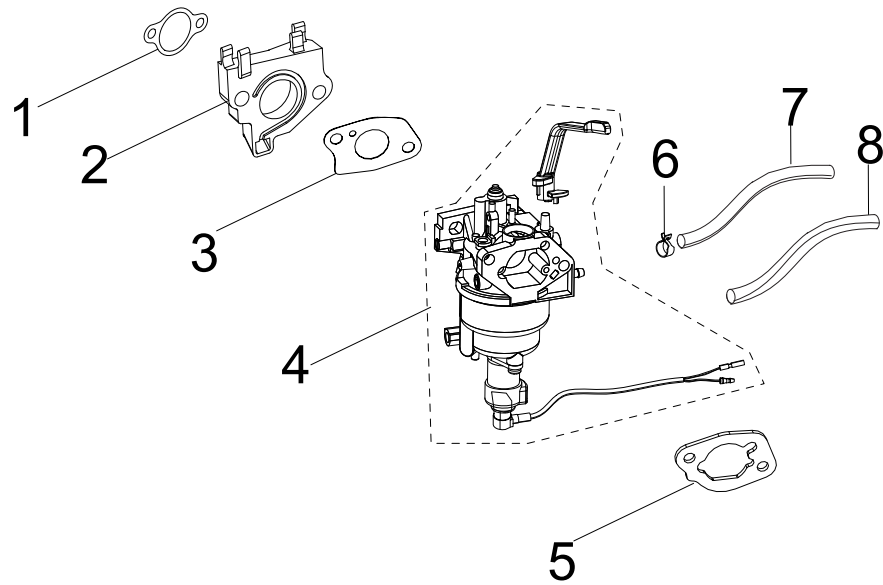


Figure D

CARBURETOR PARTS LIST

#	Part Number	Description	Qty.
1	17002-Z0D0110-0000	Gasket, Inlet	1
2	16003-Z0D0110-0001	Carburetor Insulator Plate	1
3	16001-Z100110-0000	Carburetor Gasket	1
4	16100-Z6D0111-00M0	Carburetor Assembly	1
5	17001-Z0D0110-0000	Air Cleaner Gasket	1
6	90685-D090-0EAO	Clamp, Ø9 x 0.8 x 8	1
7	90686-Z6D0210-00M0	Fuel Tube, Ø4 x Ø10 x 490	1
8	30431-Z120310-0000	Rubber Sleeve, Ø13 x Ø11.5 x 180	1
9	16112-Z080110-0000	Seal Ring, Float	1
10	16161-Z0C0110-00A0	Main Jet (H128×0.39), Standard	1
	16161-Z191210-00A2	Main Jet (H128×0.41), Altitude 3000-6000 Feet	/
	16161-Z100410-00A2	Main Jet (H128×0.43), Altitude 6000-8000 Feet	/
11	90681-Z080110-0000	Seal Ring	1

ALTERNATOR PARTS DIAGRAM

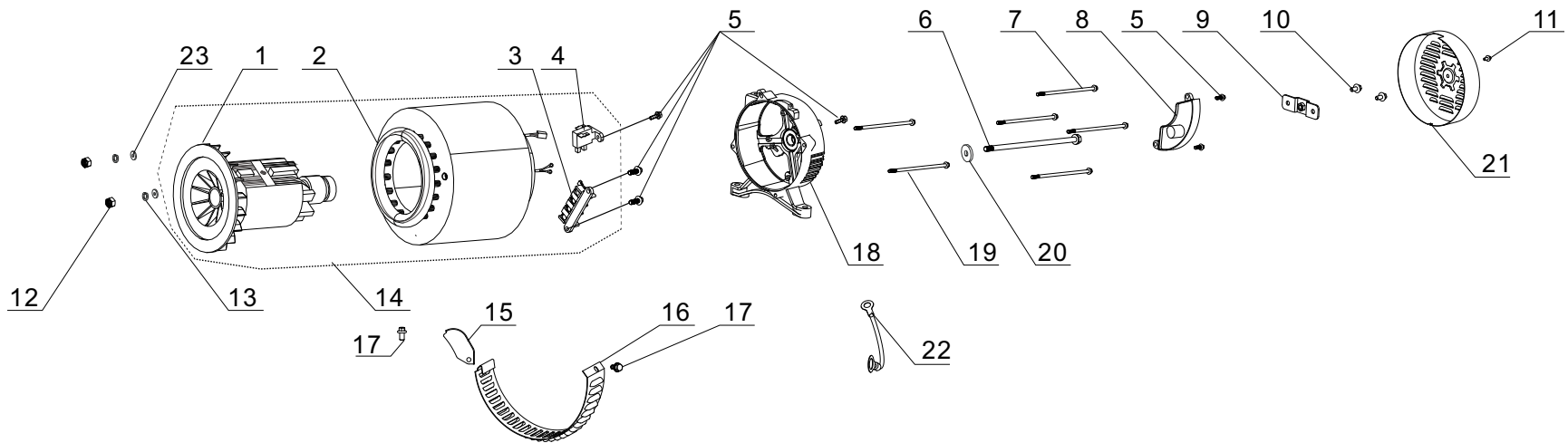


Figure E

ALTERNATOR PARTS LIST

#	Part Number	Description	Qty.
1	31330-YJ70110-0000	Rotor, AL, D204 x 158	1
2	31310-YJ70110-0000	Stator, AL, D204 x 158	1
3	31303HY090110-0000	Terminal Block	1
4	31320-YJ70110-0000	Carbon Brush Subassembly	1
5	90001-0516-0105	Hexagon Flange Bolt, M5 x 16, White Zinc	6
6	30049-Y950110-0101	Bolt M10 x 285, Rotor, White Zinc	1
7	30048-Y950110-0100	Bolt M6 x 199, Stator, White Zinc	4
8	30060-YHD0110-0000	AVR	1
9	51124-YJ70110-0100	Mounting Bracket, White Zinc	1
10	90007-0512-A301	Hexagon Flange Bolt, M5 x 12, Black Zinc	2
11	90001-0612-0305	Hexagon Flange Bolt, M6 x 12, Black Zinc	1
12	90303-0500-31A0	Nut, M5, White Zinc	2
13	90403-0500-03	Standard Spring Washer, Black Zinc	2
14	31300-YJ70110-0000	Alternator Assembly, AL, D204 x 158	1
15	30023-YC20110-00A0	Stopper, Motor Right Cover	1
	S/N≤RV2206085168		
	30023-YGM0110-0900		
	S/N>RV2206085168		
16	30024-Y730110-0001	Shroud, Motor	1
17	90001-0510-0105	Hexagon Flange Bolt, M5 x 10, White Zinc	2
18	30021-YJ70111-00A0	Bracket, Motor	1
19	31316HYDK0110-0000	Stator Fixing Bolt, M5 x 235, Oxidation	2
20	90408-Y030110-0100	Flat Washer, White Zinc	1
21	30022-YJ70110-J300	Cover, End Housing PMS 4195C	1
22	30009-YJ70110-0000	Grounding Wire	1
23	90408-0500-E1A0	Flat Washer, White Zinc	2

FUEL TANK PARTS DIAGRAM

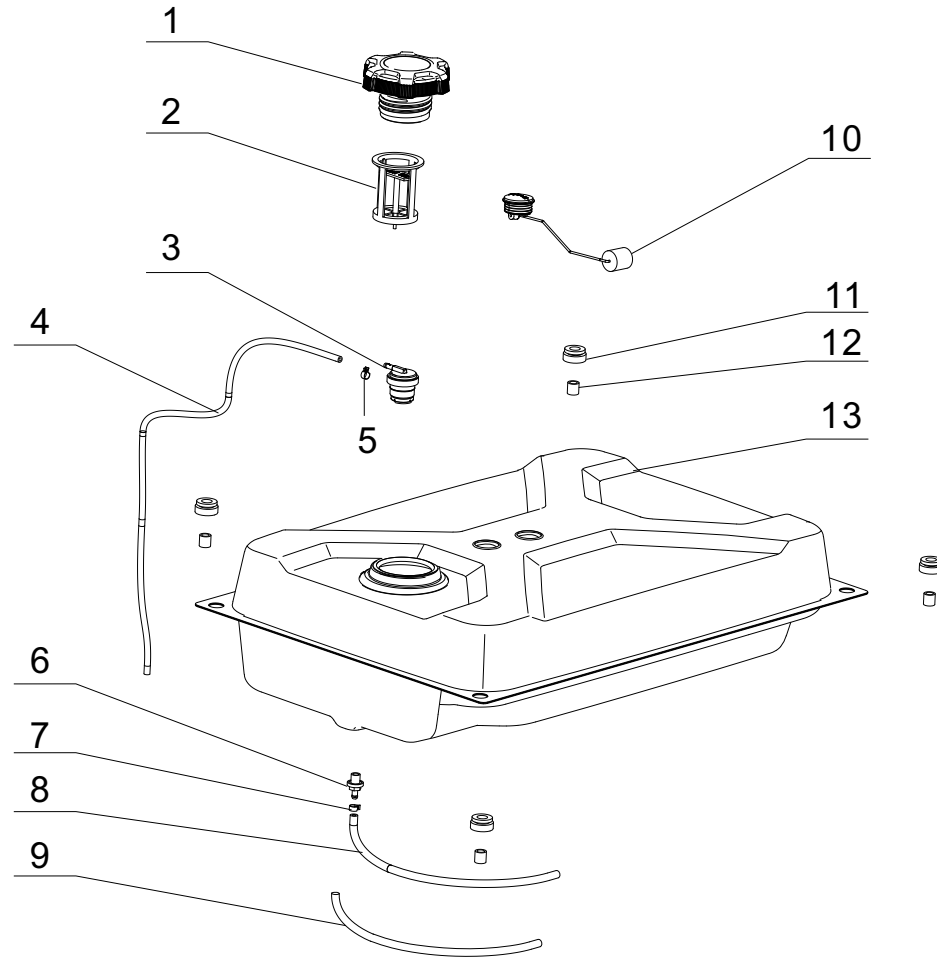


Figure F

FUEL TANK PARTS LIST

#	Part Number	Description	Qty.
1	16730-YGM0110-00A0	Fuel Tank Cap	1
2	16652-YGM0110-00A0	Fuel Filter	1
3	15150-YGK0110-00A0	One Way Valve	1
4	16804-YJ90110-0000	Tube, Fuel Tank Vent, Ø4.5 x Ø8.5 x 865	1
5	90740-Z010610-00A1	Clamp, Ø9	1
6	16680-YJ30110-00A0	Fitting, Fuel Tank Drain	1
7	90685-D105-0EA0	Clamp, Ø10.7x8x0.6	1
8	90686-YJ70210-00M0	Fuel Tube, Ø4 x Ø10 x 305	1
9	30431-Z120310-0000	Rubber Sleeve, Ø13 x Ø11.5 x 180	1
10	37200-YGM0110-00A0	Fuel Gauge	1
11	16601-Y020120-0001	Vibration Mount, Fuel Tank	4
12	90683-Y020110-0005	Bushing, White Zinc	4
13	16620-YGM0310-J3A0	Fuel Tank, 4.7gal, PMS 4195C	1

CONTROL PANEL PARTS DIAGRAM

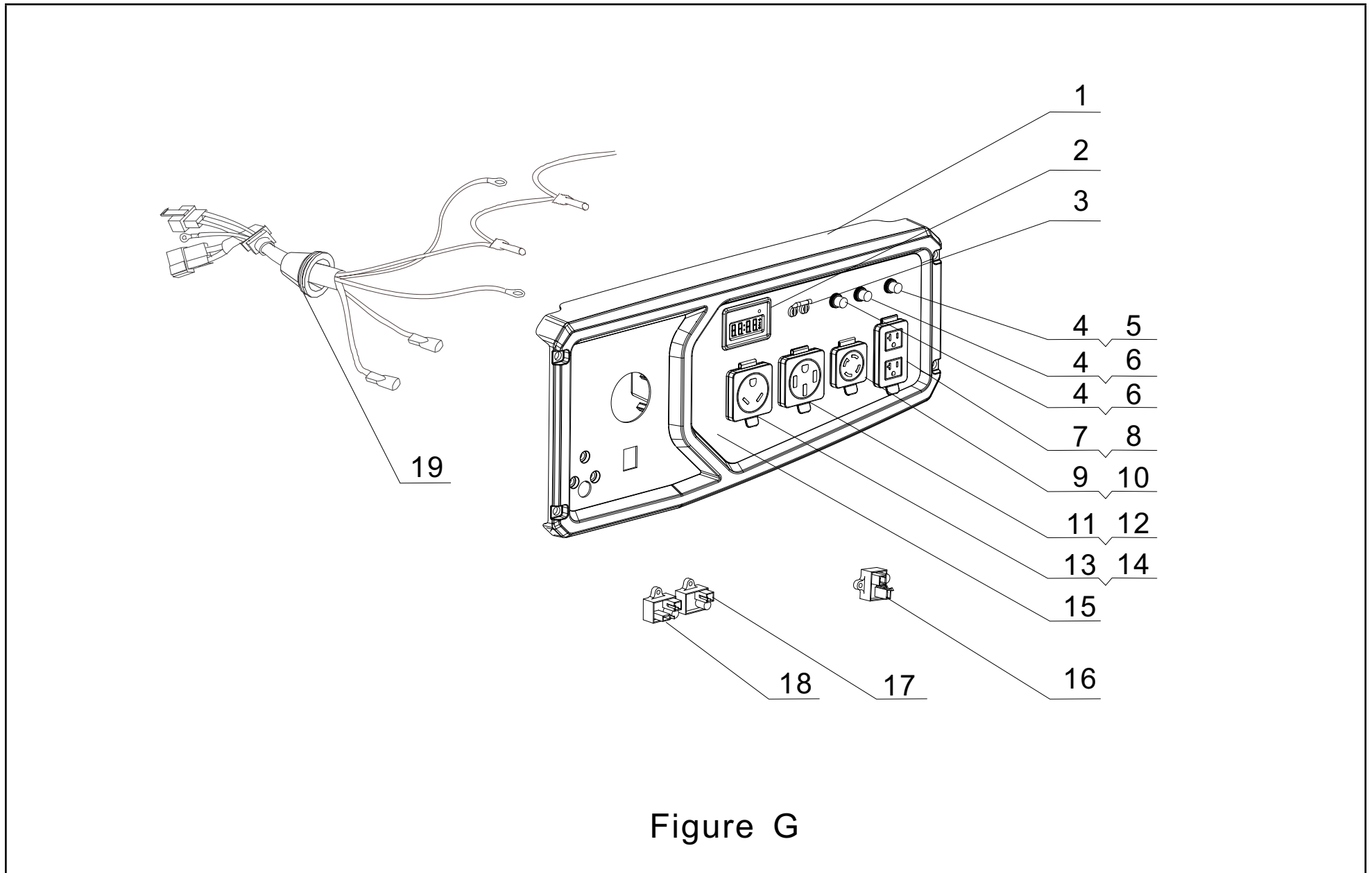


Figure G

CONTROL PANEL PARTS LIST

#	Part Number	Description	Qty.
1	35680-YJ70110-Q200	Housing, Control Panel	1
2	35632-YGM0111-0000	Display, INT1BOF	1
3	35627-YJ70110-0000	37.5Amp Circuit Breaker, 2P Flip	1
4	35654-YGK0110-0000	Cover, Push Botton	3
5	31234-YBE0210-0000	20Amp Circuit Breaker, Push Button	1
6	31234-Y4D0110-0000	30Amp Circuit Breaker, Push Button	2
7	35654-YGK0910-0000	Receptacle Cover, 5-20R	1
8	35614-Y9X0110-0000	L5-20R Receptacle, 20A, 125V	1
9	35614-Y090110-0000	L14-30R Receptacle, 30A, 125V/250V	1
10	35654-YGK0610-0000	Receptacle Cover, L14-30R	1
11	35614-Y400110-0000	L14-50R Receptacle, 50A, 125V/250V	1
12	35654-YGK0810-0000	Receptacle Cover, 14-50R	1
13	35614-Y2D0110-0000	TT-30R Receptacle, 30A, 125V	1
14	35654-YGK0710-0000	Receptacle Cover, TT-30R	1
15	35650-YJ70110-H700	Control Panel	1
16	30008-YJ30210-0000	Control Module, Carburetor	1
17	30007-Y9X0210-0000	Charging Module	1
18	30008-YJ30110-0000	OVF Module	1
19	35660-YJ70110-0000	Wire Harness, Contral Panel	1

FRAME ASSEMBLY PARTS DIAGRAM

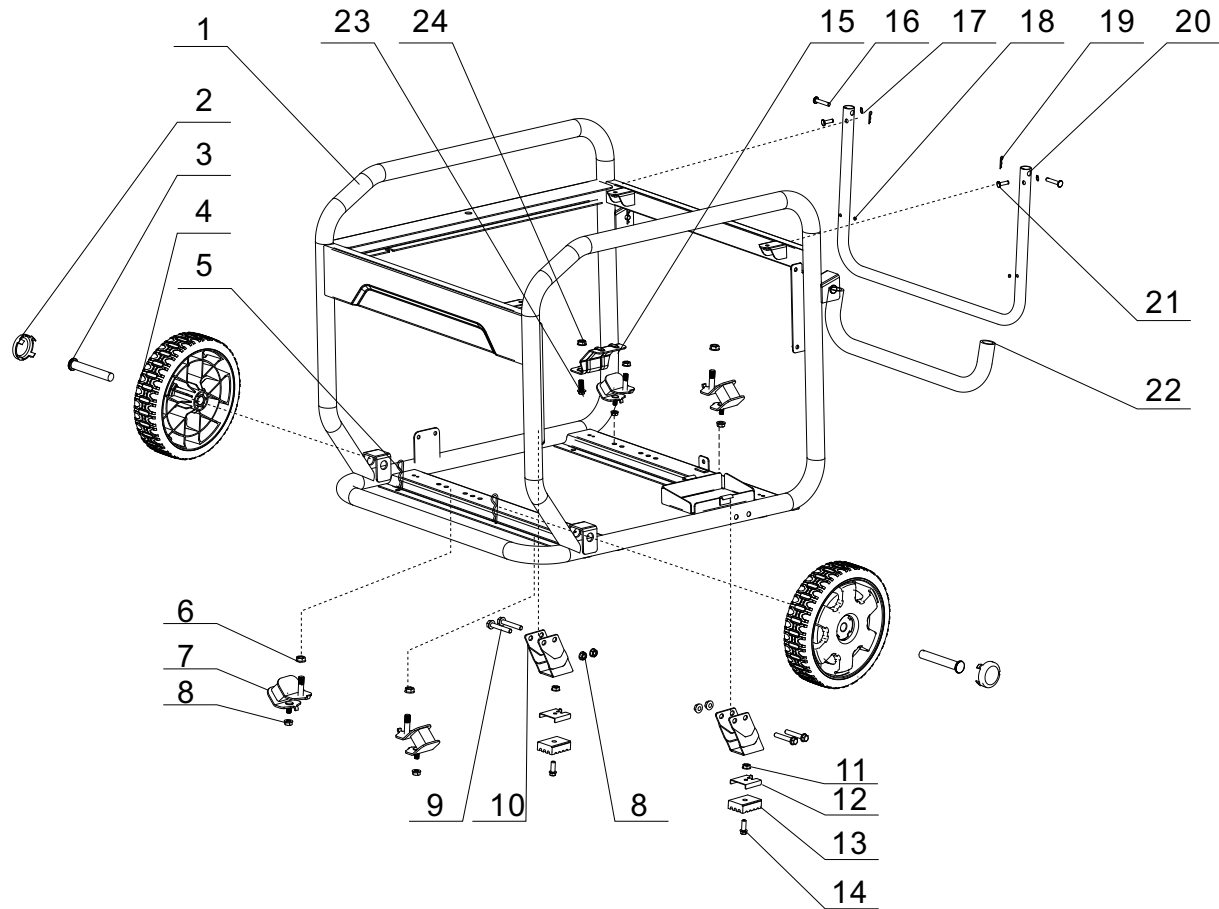


Figure H

FRAME ASSEMBLY PARTS LIST

#	Part Number	Description	Qty.
1	51100-YJ70210-H7A0	Frame Assembly	1
2	44001-YJ30110-J300	Cover, Hub Decorated PMS 4195C	2
3	44020-YGM0110-0300	Roll Pin, L=95, Black Zinc	2
4	44110-YJ70110-J300	9.5 in. Wheel PMS 4195C	2
5	90501-Y2C0110-03A1	Pin, Black Zinc	2
6	90306-1000A0301	Hexagon Flange Nut, M10, Black Zinc	4
7	51012HY030120-0000	Rear Vibration Mount, Frame	4
8	90305-0800-3305	Hexagon Flange Nut, M8, Black Zinc	8
9	90001-0850-0301	Hexagon Flange Bolt, M8 x 50, Black Zinc	4
10	51016-YJ70110-H7A0	Support Leg	2
11	90305-0600-3301	Hexagon Flange Nut, M6, Black Zinc	2
12	24329-YJ70110-H700	Bracket, Rubber Foot	2
13	51014-YJ70110-0000	Foot, Rubber	2
14	90001-0620-0305	Hexagon Flange Bolt, M6 x 20, Black Zinc	2
15	24329-YGM0210-H7A0	Bracket, Heat Shield	1
16	90504-Y9X0110-0305	Pin Shaft 1, Black Zinc	2
17	90573-0800-0601	Spring Washer	2
18	90722-YEC0110-0001	Plug 1, End	2
19	90583-YGK0110-03A0	R Pin, Black Zinc	2
20	54110-YJ70110-H7A0	Handle, Ø25 x 1.2	1
21	90504-YJ70110-0300	Pin Shaft 2, Black Zinc	2
22	54101-YJ70110-0000	Handle Sheath	1
23	90001-0816-0305	Hexagon Flange Bolt, M8 x 16, Black Zinc	1
24	90305-0800-3305	Hexagon Flange Nut, M8, Black Zinc	1

WIRING DIAGRAM

