

Champion Power Equipment, Inc., Santa Fe Springs, CA USA

MODEL #201033C

PARTS INFORMATION

6000W PORTABLE GENERATOR

SERIAL NUMBER RANGE: ALL

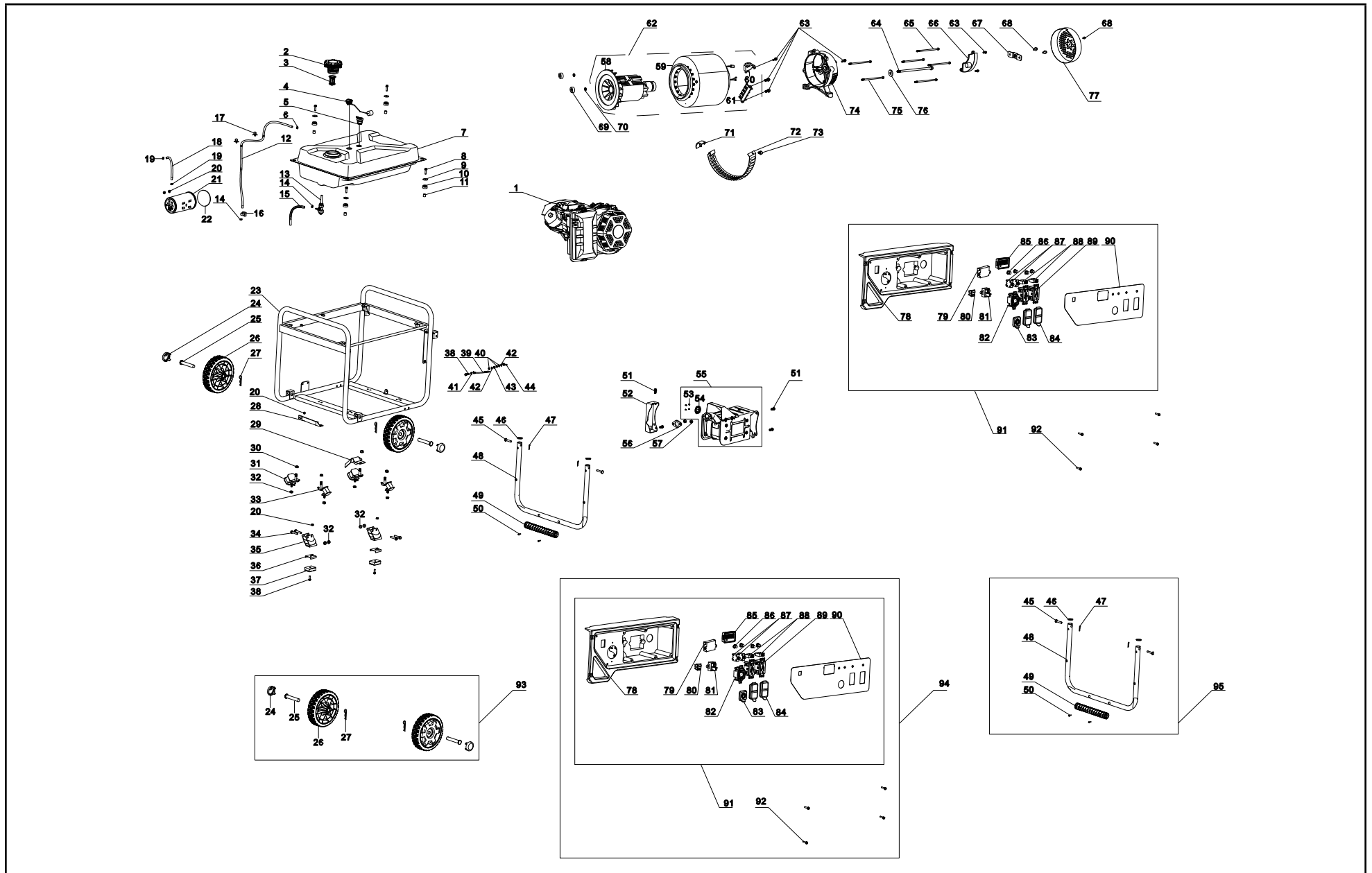


To order replacement parts please visit:
shop.championpowerequipment.com
or call **1-877-338-0999**.

TABLE OF CONTENTS

Generator Parts Diagram	3
Generator Parts List	4
Engine Parts Diagram	6
Engine Parts List	7
Wiring Diagram	9

GENERATOR PARTS DIAGRAM



GENERATOR PARTS LIST

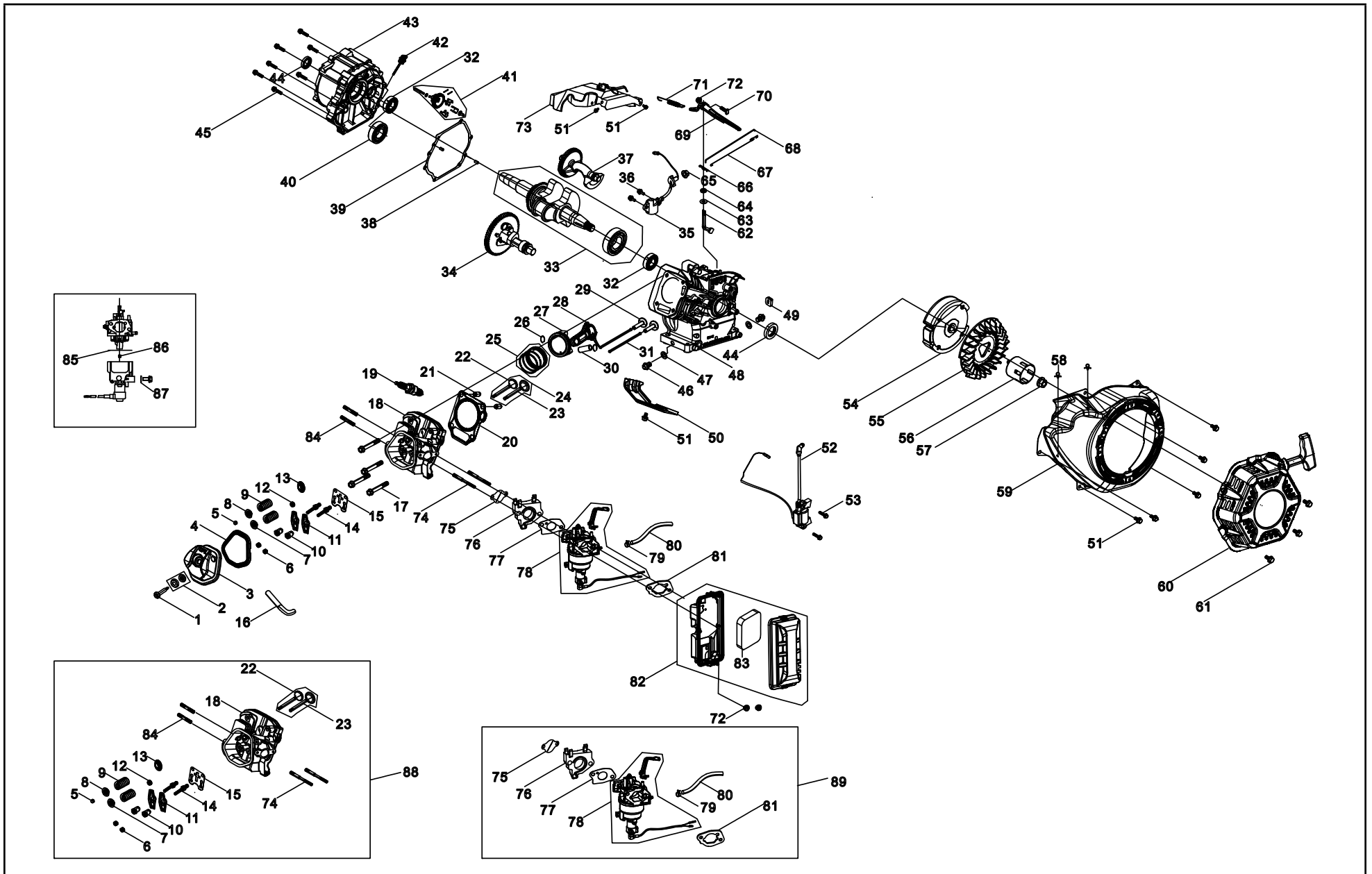
#	Part Number	Description	Qty.
1	R390MR000FB-CMP303	Engine, 389cc	1
2	16730-YGM0110-00A0	Fuel Tank Cap	1
3	16652-YGM0110-00A0	Fuel Filter	1
4	37200-YGM0110-00A0	Fuel Gauge	1
5	15150-YGK0110-00A0	One Way Valve	1
6	90740-Z010610-00A1	Clamp, Ø9	1
7	16620-YGM0110-L4A0	Fuel Tank, 29.1L	1
8	90007-0625-0301	Flange Bolt, M6 x 25, Black Zinc	4
9	90408-Y020110-0005	Flat Washer, Ø6, Black Zinc	4
10	16601-Y020120-0001	Vibration Mount, Fuel Tank, 12.5x Ø16	4
11	90683-Y020110-0000	Bushing, Blue White Zinc, Ø8.7 x Ø12.2	4
12	16804-YHD0110	Connection Pipe, Ø4.5 x Ø8.5 x 860	1
13	16750-Y020211-0000	Fuel Valve Assembly	1
14	90685-Z030610-0300	Clamp, Ø8x7x0.6, Black Zinc	2
15	30431-YCM0310-0001	Rubber Sleeve, Ø9.5 x Ø11 x 150	1
16	90804-Y5Z0210-0001	Stop Block	1
17	90684-Z140110-0000	Clip, Ø10	2
18	16805-YHD0110-0000	Connection Pipe, Air Cleaner	1
19	90685-Z020110-0300	Clamp, Ø9.5 x 8 x 0.8, Black Zinc	2
20	90305-0600-0302	Flange Nut, M6, Black Zinc	5
21	16801-YDK0110-00A1	Carbon Canister, 400 cc	1
22	82153-YGM0110-00A0	Heat Film	1
23	51100-YHD0110-H2A0	Frame Assembly, Ø25 x 1.2, 683 x 550 x 575	1
24	44001-V580110-L401	Cover, Hub Decorated	2
25	44020-Y9X0110-0306	Pin Roll Ø16x96, Black Zinc	2
26	100714023-0001	8 in. Wheel, Yellow	2
27	90501-Y2C0110-03A1	Pin, Black Zinc	2
28	17003-Y290110	Air Cleaner Support	1
29	24329-YGM0110-H2A0	Block 1	1
30	90306-1000A0301	Flange Nut, M10, Black Zinc	4

#	Part Number	Description	Qty.
31	51012HY030120-0000	Rear Vibration Mount, Frame	2
32	90305-0800-3305	Flange Nut, M8, Black Zinc	8
33	51005HY030120-0000	Vibration Mount, Frame	2
34	90001-0840-0301	Flange Bolt, M8 x 40, Black Zinc	4
35	51016-YJ30110-H2A0	Bracket, Support Leg	2
36	24329-YJ70110-H200	Block 2	2
37	51014-YJ70110-0000	Support Leg	2
38	90001-0625-0305	Flange Bolt, M6 x 25, Black Zinc	3
39	30009-YBE0110-0000	Grounding Wire	1
40	90408-0600-E305	Flat Washer, Black Zinc	3
41	90415-0600-Z301	Lock Washer, Toothed, Black Zinc	1
42	90403-0600-0305	Spring Washer, Black Zinc	2
43	90303-0600-3305	Flange Nut, M6, Black Zinc	1
44	90312-0600-0301	Wing Nut, M6, Black Zinc	1
45	90504-YGM0110-0300	Pin Shaft	2
46	90722-YEC0210-0001	Plug, End	2
47	90583-YGK0110-03A0	R Pin, Black Zinc	2
48	54110-YGM0110-H2A0	Handle, Ø25 x 1.2	1
49	54101-YGM0110-L400	Handle Sheath	1
50	90103-0416-5301	Screw, M4 x 16, Black Zinc	2
51	90001-0816-0305	Flange Bolt, M8 x 16, Black Zinc	4
52	18030-Y730110-000C	Muffler Bracket, White Zinc	1
53	90107-0510-53	Screws, ST4.8 x 9.5, Black Zinc	4
54	18250-YJP0110-0000	Spark Arrestor	1
55	18100-YJP0110-00A1	Muffler Assembly	1
56	18101-Z080110-00A0	Exhaust Outlet Gasket	1
57	90303-0800-0301	Nut, M8, Black Zinc	2
58	31330-YHD0110-0000	Rotor, AL, Ø190 x 130	1
59	31310-YHD0110-0000	Stator, AL, Ø190 x 130	1
60	31320-YHD0110-0000	Carbon Brush Subassembly	1

#	Part Number	Description	Qty.
61	31303HY090110-0000	Terminal Block	1
62	31300-YHD0110-0000	Alternator Assembly, AL, Ø190 x 130	1
63	90001-0516-0105	Flange Bolt, M5 x 16, Blue White Zinc	6
64	30049-Y090110-0100	Bolt M10 x1.25x250, Rotor	1
65	30048-YE30110-0900	Bolt M6 x 174, Stator	4
66	30060-YHD0110-0000	AVR	1
67	51124-YJ70110-0100	Mounting Bracket, Blue White Zinc	1
68	90001-0512-0301	Flange Bolt, M5 x 12, Black Zinc	3
69	31317-Y030110-0000	Stator Fixing Nut, M5, Black Zinc	2
70	90403-0500-03	Standard Spring Washer, Black Zinc	2
71	30023-Y030120-0000	Stopper, Motor Right Cover	1
72	30024-Y730110-0001	Shroud, Motor	1
73	90001-0510-0105	Flange Bolt, M5 x 10, Black Zinc	1
74	30021-Y030310-00A0	Bracket, Motor	1
75	31316-Y090110-0000	Stator Fixing Bolt, M5 x 198	2
76	90408-Y030110-0100	Flat Washer, Blue White Zinc	1
77	30022-YJ70110-L400	Cover, End Housing, Yellow	1
78	35680-YHD0110-0000	Seat, Panel	1
79	35720-YHD0110-0000	CO Module	1
80	35160-Y450110-0000	Switch, Engine	1
81	31234-YB00210-0000	Over Voltage Protector	1
82	35614-Y090110-0000	L14-30R Receptacle, 30A, 125V/250V	1
83	35654-YBE0210-0000	Receptacle Cover, L14-30R	1
84	35654-YBE0110-0000	Receptacle Cover, 5-20R GFCI	2
85	35632-YGM0210-0000	Display, INT1AOF	1
86	35654-YGK0110-0000	Cover, Push Button	4
87	31234-YA60310-0000	Circuit Breaker, Push Button, 25A	2
88	31234-YBE0210-0000	Circuit Breaker, Push Button, 20A	2
89	35614-Y9X0110-0000	Receptacle GFCI 5-20R, Duplex	2
90	35650-YHD0110-H200	Control Panel	1
91	35610-YHD0110-H200	Control Panel Assembly	1
92	90001-0616-0301	Flange Bolt, M6 x 16, Black Zinc	4

#	Part Number	Description	Qty.
93	XZZJ-R390-001	Wheel Assembly	1
94	MBZJ-R390-001	Panel Assembly	1
95	FSZJ-R390-001	Handle Assembly	1

ENGINE PARTS DIAGRAM



ENGINE PARTS LIST

#	Part Number	Description	Qty.
1	12032-Z080110-0101	Cylinder Head Cover Bolt, Blue White Zinc	1
2	12034-Z080110-0091	Cylinder Head Cover Gasket Subassembly, Blue White Zinc	1
3	12410-Z310110-0003	Cylinder Head Cover Subassembly, Blue White Zinc	1
4	12004-Z080110-0001	Cylinder Head Cover Gasket	1
5	12104-Z080110-00A0	Rotator, Valve	1
6	14312-Z010110-00A0	Valve Lock Nut	2
7	12112-Z080110-00A0	Valve Spring Retainer	1
8	12107-Z080110-00A0	Valve Spring Retainer, Exhaust valve	1
9	12103-Z080110-00A0	Valve Spring	2
10	14314-Z010110-00A0	Valve Adjusting Nut	2
11	14311-Z080110-00A0	Valve Rocker	2
12	12101-Z080110-00A0	Seal Guide	1
13	12105-Z080110-00A0	Valve Spring Seat	1
14	14313-Z010110-00A0	Valve Adjusting Bolt	2
15	14090-Z080110-00A0	Lifter Stopper Plate Subassembly, Blue White Zinc	1
16	17004-Z080110-0001	Tube, Breather	1
17	12003-Z080110-0300	Cylinder Head Bolt, M10 x 80	4
18	12140-Z190150-0BA9	Cylinder Head Subassembly	1
19	30010-Z010110-0000	Spark Plug, F6RTC	1
20	12131-Z100110-0000	Cylinder Head Gasket	1
21	90502-1220-00	Pin, 12 x 20	2
22	12121-Z190110-0000	Exhaust Valve	1
23	12111-Z100110-0000	Inlet Valve	1
24	12110-Z190110-00A9	Valve Set	1
25	13200-Z100110-00A9	Piston Ring Assembly	1
26	13122-Z100110-00A0	Piston Pin Clip	2
27	13111-Z100210-00A0	Piston	1

#	Part Number	Description	Qty.
28	13010-Z100120-00A0	Connecting Rod	1
29	14081-Z080110-00A0	Valve Lifter	2
30	13121-Z100110-00A0	Piston Pin, Ø20 x Ø62	1
31	14070-Z100110-00A0	Valve Rod	2
32	90548-0202-00	Bearing	2
33	13300-Z100110-RB00	Crankshaft Assembly	1
34	14200-Z100320-0009	Camshaft Assembly	1
35	37060-Z080120-0000	Engine oil Sensor, W/O Nut	1
36	90001-0616-01	Hexagon Flange Bolt, M6 x 16, Blue White Zinc	2
37	13401-Z100110-00A0	Balancing Shaft	1
38	90502-0812-00	Pin, 8 x 12	2
39	11001-Z100120-00A0	Crankcase Gasket	1
40	90547-0207-00	Bearing	1
41	16400-Z100110-00A0	Governor Gear Assembly	1
42	15010-Z080330-L401	Oil Dipstick Subassembly	1
43	11411-Z100610-0BA0	Crankcase Cover	1
44	90682-Z310110-00A0	Oil Seal, Ø35 x Ø52 x 7	2
45	90001-0840-03	Flange Bolt, M8 x 40, Black Zinc	7
46	11007-Z080110-0300	Drain Plug Bolt, M12 x1.5 x18, Black Zinc	2
47	90412-Z080110-0000	Washer, Ø12 x Ø21 x 2	2
48	11310-Z100710-0BA0	Crankcase Subassembly	1
49	28101-Z080110-0001	Rubber Plug, Black	1
50	19304-Z100210-0101	Cylinder Body Shroud	1
51	90001-0612-03	Flange Bolt, M6 x 12, Black Zinc	8
52	30400-Z080810-0002	Ignition Coil	1
53	90001-0628-01	Hexagon Flange Bolt, M6 x 28, Blue White Zinc	2
54	13510-Z100120-00A0	Flywheel Subassembly	1
55	19352-Z100210-00A0	Impeller	1

#	Part Number	Description	Qty.
56	28002-Z100210-0000	Starter Pulley, Blue White Zinc	1
57	13501-Z080110-0000	Flywheel Nut, M16 x 1.5, Blue White Zinc	1
58	90684-Z030210-0001	Clip, Ø5.7	2
59	28110-Z100220-L401	Shroud	1
60	28200-Z590110-H200	Recoil Starter Assembly	1
61	90001-0608-03	Flange Bolt, M6 x 8, Black Zinc	3
62	16061-Z100110-00A0	Governor Arm	1
63	90412-Z080210-0000	Washer, Ø8.4 x Ø19.5 x 0.8	1
64	90682-Z100210-00A0	Oil Seal, Ø8 x Ø14 x 4	1
65	90305-Z010210-0300	Hexagon Flange Nut, M10, Black Zinc	1
66	90501-Z010110-0001	Pin, Blue White Zinc	1
67	16012-Z080110-0000	Throttle Valve Returning Spring	1
68	16062-Z100110-0001	Governor Rod, Blue White Zinc	1
69	16070-Z100120-0001	Governor Support Subassembly, Blue White Zinc	1
70	16072-Z010310-0000	Governor Support Bolt, M6 x 21, Black Zinc	1
71	16063-Z100710-0001	Spring, Governor	1
72	90305-0600-33	Flange Nut, M6, Black Zinc	3
73	16520-Z6L0110-0001	Throttle Control Assembly, Blue White Zinc	1
74	90204-Z100410-0000	Stud, M6/M8 x 110, Black Zinc	2
75	17002-Z100110-00A0	Inlet Gasket	1
76	16003-Z100110-00A0	Carburetor Insulator Plate	1
77	16001-Z100110-00A0	Carburetor Gasket	1
78	16100-Z102910-00M0	Carburetor Assembly	1
79	90685-Z030610-01A1	Clamp, Ø8 x 7 x 0.6	1
80	90686-Z510110-00M1	Fuel Pipe, Ø4.5 x Ø8.5 x 190	1
81	17001-Z080110-00A0	Air Cleaner Gasket	1
82	17100-Z102110-0000	Air Cleaner	1
83	17151-Z101110-0000	Element, Air Cleaner	1
84	90203-Z010110-0000	Stud, M8 x 34, Black Zinc	2
85	16112-Z080110-0000	Seal Ring, Float	1

#	Part Number	Description	Qty.
86	16161-Z154310-0000	Main Jet, Standard	1
	16161-Z154010-0000	Main Jet, Altitude 3000-6000 Feet	1
	16161-Z153710-0000	Main Jet, Altitude 6000-8000 Feet	1
87	90681-Z010510-0000	Seal Ring	1
88	QGT-R390-001	"Cylinder Head Subassembly"	1
89	HYQ-R390-001	Carburetor Subassembly	1

WIRING DIAGRAM

