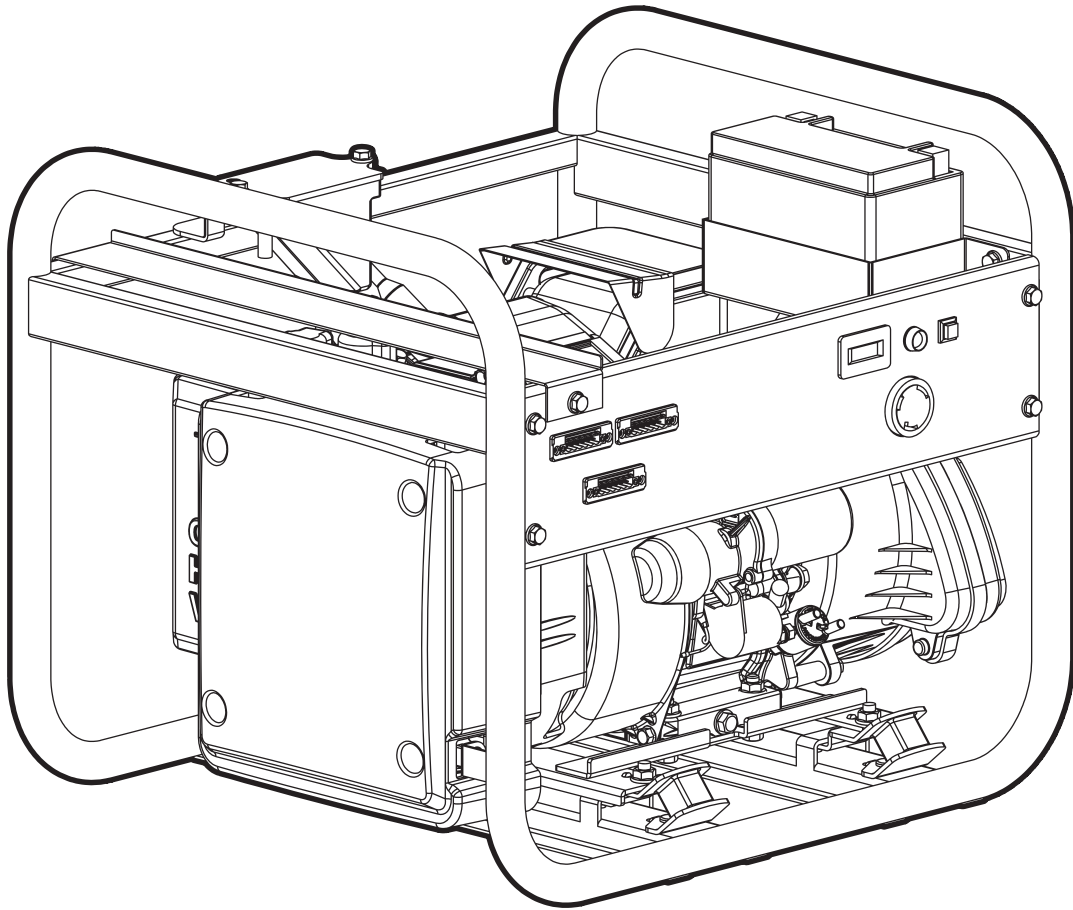


# Genie®

POWERED by

**CHAMPION**  
GLOBAL POWER EQUIPMENT

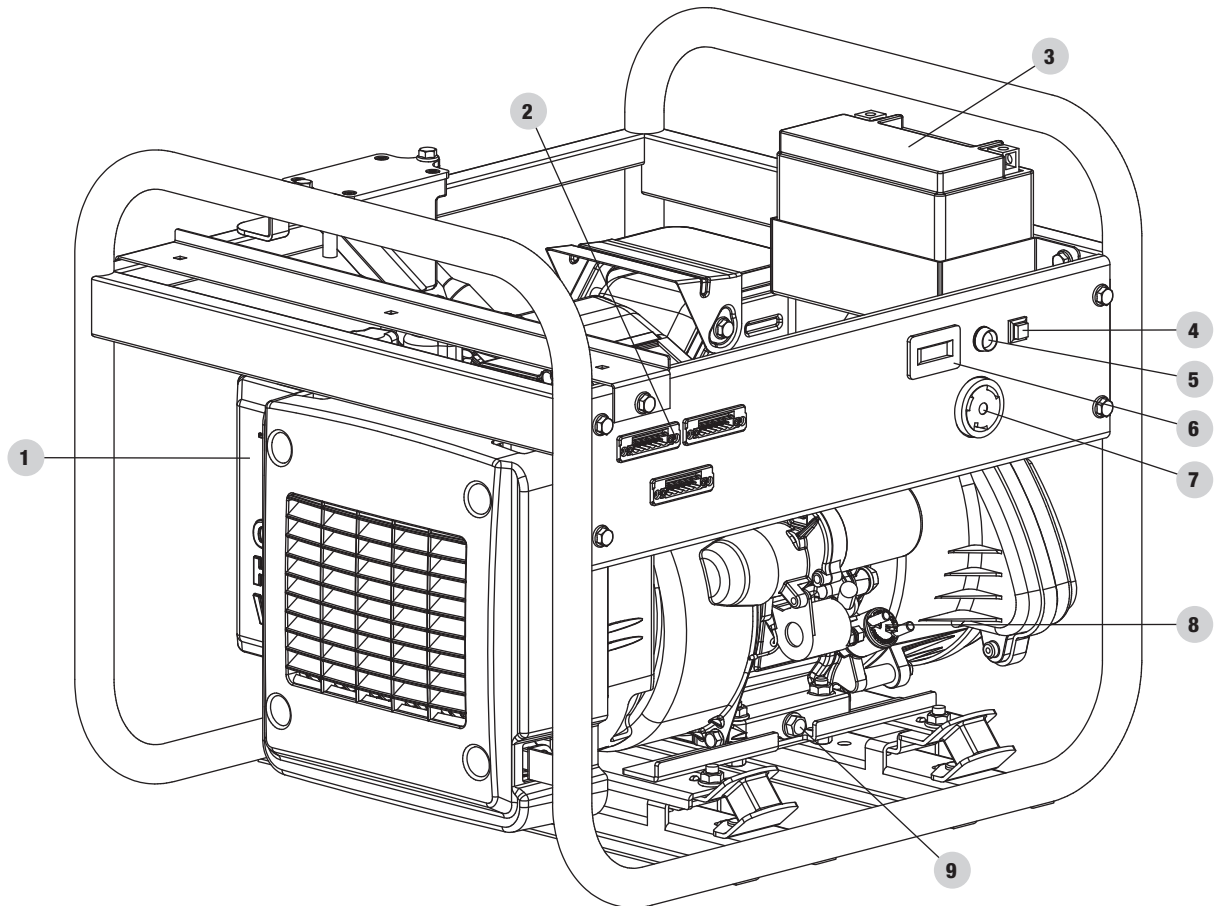
**MODEL #100467**  
**3500 DIGITAL INVERTER**  
**PART NUMBER: 1287633GT**



## CONTROLS AND FEATURES

Read this operator's manual before operating your generator. Familiarize yourself with the location and function of the controls and features. Save this manual for future reference.

### Generator



1. **Air Cleaner**
2. **Connectors A, B, C** - Interface between generator and Light Tower.
3. **12VDC 9AH Battery** - Used to power starter during remote starting.
4. **Wireless Reset Button** - Used to reset or pair remote fob.
5. **Wireless Reset Indicator**
6. **Hour meter** - Logs run time of generator.
7. **120VAC, 30 Amp Receptacle (L5-30R)**
8. **Oil Fill Port**
9. **Oil Drain**

## SPECIFICATIONS

### Generator Specifications

Generator Model .....	100467
Start Type .....	Remote
Watts (Starting/Running) .....	4000/3500
AC Volts .....	120
AC Amps @ 120 V .....	29.2
DC Volts .....	12-24 VDC
DC Amps .....	4-8 amps DC
Frequency .....	60 Hz
Phase .....	Single
Net Weight .....	84.4 lb. (38.3 kg)
Length .....	26.7 in. (67.7 cm)
Width .....	18.2 in. (46.3 cm)
Height .....	17.4 in. (44.2 cm)

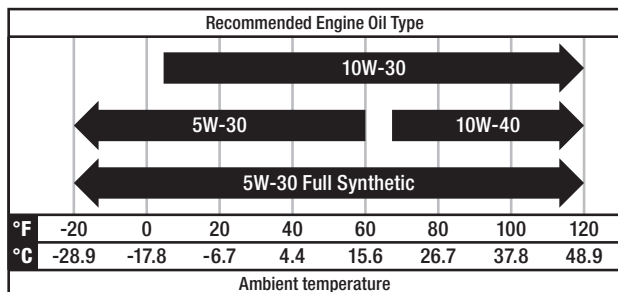
### Engine Specifications

Model .....	YF172IV-331
Displacement .....	224 cc
Type .....	4-Stroke OHV

### Oil Specifications

DO NOT OVERFILL.

Type .....	*See chart below
Capacity .....	0.6 qt. (0.6 L)



#### NOTICE

Weather will affect engine oil and engine performance. Change the type of engine oil used based on weather conditions to suit the engine needs.

### Fuel Specifications

Use regular unleaded gasoline with a minimum octane rating of 85 and an ethanol content of 10% or less by volume. DO NOT USE E15 or E85.

### Spark Plug Specifications

OEM Type .....	NHSP F6RTC
Replacement Type .....	NGK BPR6ES or equivalent
Gap .....	0.028-0.031 in. (0.7-0.8 mm)

### Valve Specifications

Intake Clearance .....	0.005-0.007 in. (0.13-0.17 mm)
Exhaust Clearance .....	0.007-0.009 in. (0.18-0.22 mm)

#### NOTICE

A technical bulletin regarding valve adjustment procedures is available at [www.championpowerequipment.com](http://www.championpowerequipment.com).

### Battery Specifications

Type .....	Rechargeable, Non-Spillable Lead Acid
Volts .....	12
Capacity .....	9 Ah

### Temperature Specifications

Starting Temperature Range (°F/°C) .....	5 to 104/-15 to 40
Remote Starting Temperature Range (°F/°C) .....	23 to 104/-5 to 40

#### NOTICE

**An important message about temperature:** Your product is designed and rated for continuous operation at ambient temperatures up to 40°C (104°F). When your product is needed it may be operated at temperatures ranging from 5°F (-15°C) to 122°F (50°C) for short periods of time. If exposed to temperatures outside this range during storage, it should be brought back within this range before operation. In any event, the product must always be operated outdoors, in a well-ventilated area and away from doors, windows and vents.

## WIRELESS SET BUTTON

The wireless set button is a feature that lets the user sync remotes to the generator. One can set up to two remote controls or reset a remote control with the generator. To reset a remote control or sync two remote controls follow these steps:

1. Turn the ignition switch to the "ON" position.
2. Turn the battery switch to the "ON" position.
3. Open the RL4LED engine housing and push and hold the wireless set button next to the red light for approximately three seconds; the red light will turn on.
4. Push and release the STOP button on the remote. The red light blinks once to erase the remote program. If you have a second remote, press the STOP button on it as well.
5. Push and release the START button for 2 seconds. The red light blinks once to program the remote. If you have a second remote, press the START button on it as well.
6. Push and hold the programming button approximately three seconds until the red light turns off.
7. Test Start & Stop features

## MAINTENANCE SCHEDULE

Follow the service intervals indicated in the following maintenance schedule.

Service your generator more frequently when operating in adverse conditions.

Contact our Technical Support Team at 1-877-338-0999 to locate the nearest CPE certified service dealer for your generator or engine maintenance needs.

### EVERY 8 HOURS OR DAILY

- Check oil level
- Clean around air intake and muffler

### FIRST 5 HOURS

- Change oil

### EVERY 50 HOURS OR EVERY SEASON

- Clean air filter
- Change oil if operating under heavy load or in hot environments

### EVERY 100 HOURS OR EVERY SEASON

- Change oil
- Clean/adjust spark plug
- Check/adjust valve clearance\*
- Clean spark arrestor
- Clean fuel tank and filter\*

### EVERY 250 HOURS

- Clean combustion chamber\*

### EVERY 3 YEARS

- Replace fuel line\*

*\*To be performed by knowledgeable, experienced owners or CPE certified service centers.*

## OPERATION AT HIGH ALTITUDE

The density of air at high altitude is lower than at sea level. Engine power is reduced as the air mass and air-fuel ratio decrease. Engine power and generator output will be reduced approximately 3½% for every 1000 feet of elevation above sea level. This is a natural trend and cannot be changed by adjusting the engine. At high altitudes increased exhaust emissions can also result due to the increased enrichment of the air fuel ratio. Other high altitude issues can include hard starting, increased fuel consumption and spark plug fouling.

The alternative main jet and installation instructions can be obtained by contacting Customer Support.

The part number and recommended minimum altitude for the application of the high altitude carburetor main jet is listed in the table below.

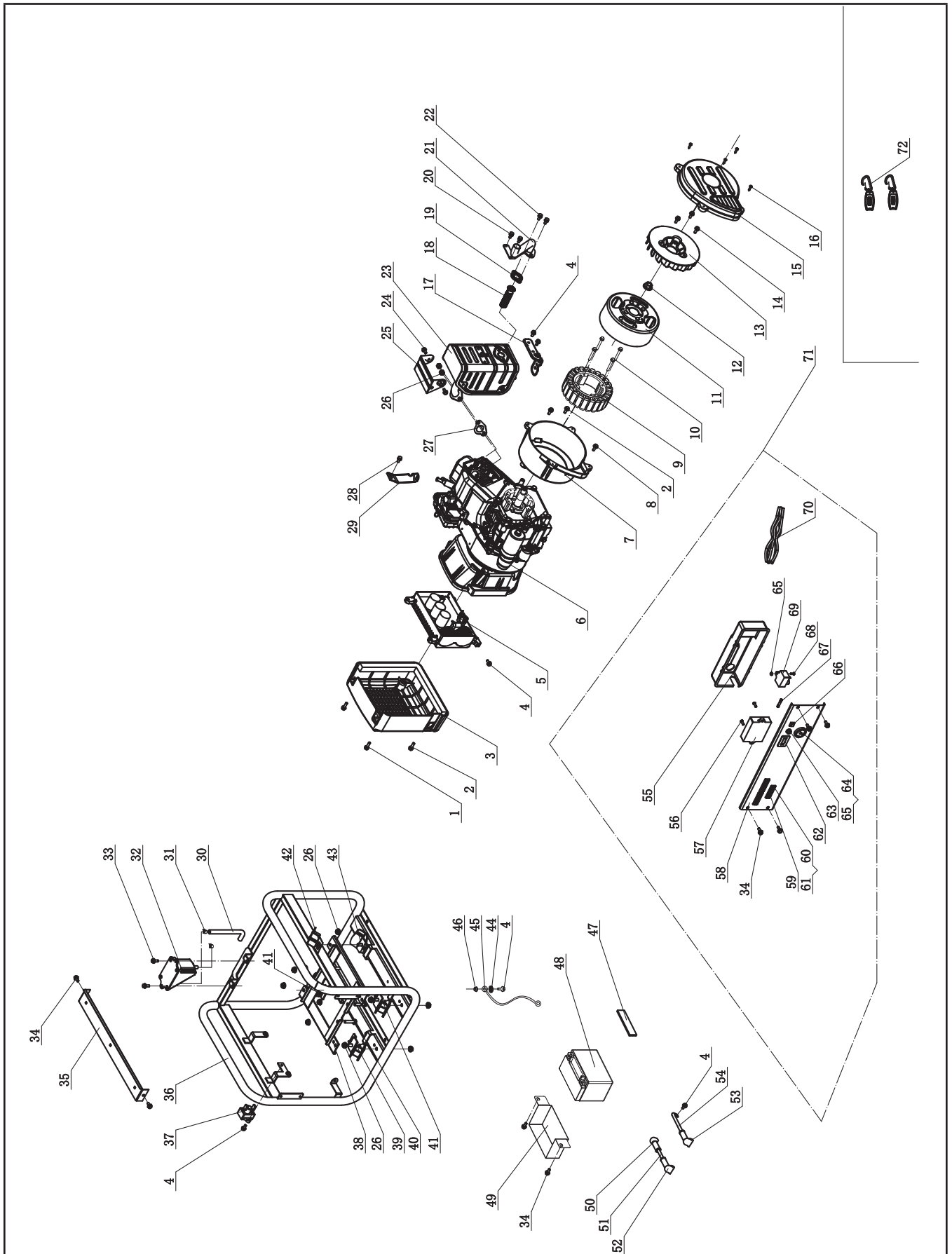
In order to select the correct high altitude main jet it is necessary to identify the carburetor model. For this purpose, a code is stamped on the side of the carburetor. Select the correct main jet part number corresponding to the carburetor code found on your particular carburetor.

Carburetor Code	Main Jet	Part Number	Altitude
P22-8-H	Standard	27.131017.01.H	3500 ft.
	Altitude	27.131017.01.01.H	(1067 m)

### WARNING

Operation using the alternative main jet at elevations lower than the recommended minimum altitude can damage the engine. For operation at lower elevations, the standard main jet must be used. Operating the engine with the wrong engine configuration at a given altitude may increase its emissions and decrease fuel efficiency and performance.

# Parts Diagram



## Parts List

#	Part Number	Description	Qty.
1	1.5789.0625	Flange Bolt M6 × 25	2
2	1.5789.0620	Flange Bolt M6 × 20	4
3	85.220005.01	Protection Cover, Control Unit	1
4	1.5789.0612	Flange Bolt M6 × 12	6
5	85.221000.02	Control Unit, 3.3KW, 120V/60Hz, Wireless Parallel	1
6	85.601	Engine, 224cc	1
7	85.190002.01	End Housing, Motor	1
8	1.5789.0615	Flange Bolt M6 × 15	1
9	85.191200.08	Stator Assembly	1
10	1.9074.14.0650	Bolt/Washer Assembly M6 × 50	4
11	85.191100.02	Rotor Assembly	1
12	2.02.006	Nut M14 × 1.5	1
13	83.190001.01	Fan, Generator	1
14	1.5789.0615	Flange Bolt M6 × 15	3
15	85.190003.01	End Cover, Generator	1
16	1.845.4219	Screw ST4.2 × 19	4
17	85.100100.01.2	Bracket, Muffler	1
18	46.101300.08	Spark Arrester Assembly	1
19	46.101503.08	Plate, Spark Arrester	1
20	1.9074.17.0615.1	Bolt /Washer Assembly M6 × 15, Black	2
21	85.100002.02	Exhaust reversing device	1
22	1.9074.17.0625.1	Bolt /Washer Assembly M6 × 25, Black	2
23	85.101000.02	Muffler Assembly	1
24	1.5789.0610	Flange Bolt M6 × 10	2
25	85.101203.01.2	Cover, Exhaust Pipe	1
26	1.6177.1.08	Lock Nut M8, Flange	14
27	26.100001.00	Gasket, Muffler	1
28	1.5789.0608	Flange Bolt M6 × 8	1
29	23.090006.21	Holder, Air Cleaner	1
30	85.020001.01	Breather Tube, 135+ 35 mm	1
31	2.06.027	Clamp Ø12 × b8	2
32	85.021300.00	Engine oil condenser components	1
33	1.5789.0615.1	Flange Bolt M6 × 15, Black	2

#	Part Number	Description	Qty.
34	1.5789.0612.1	Flange Bolt M6 × 12, Black	8
35	85.201600.02	Harness plate	1
36	61152.0.2	Frame, 520 × 461 × 442	1
37	5.1800.007	Rectifier	1
38	85.201600.01	Supporter	1
39	85.201200.01	Motor Mount, 1	1
40	1.5789.0832	Flange Bolt M8 × 32	4
41	85.201200.02	Motor Mount, 2	2
42	85.100007.01	Insulation Board, Motor Mount	1
43	85.201200.03	Motor Mount, 3	1
44	1.862.06	Lock Washer Ø6, Toothed	1
45	5.1900.096	Grounding Line 180mm	1
46	1.6177.1.06	Lock Nut M6, Flange	1
47	85.200021.02	Sponge	1
48	9.1000.090	Battery 12V9AH	1
49	122.200901.05	Battery support	1
50	152.200013.02.3	Jacket, Wire, Red	1
51	5.1900.024	Red Wire, 480 mm, Battery, CSA	1
52	122.200013.04.3	Jacket, 9AH Battery, Red	1
53	122.200013.04	Jacket, 9AH Battery, Black	1
54	5.1900.025	Black Wire, 320 mm, Battery, CSA	1
55	122.210002.33	Control Box, CSA	1
56	1.818.0514.2	Screw M5 × 14	2
57	5.1830.006	Remote Module	1
58	122.069.34.2	Control Panel, Black	1
59	5.1610.011	Connector Assembly, Female	3
60	1.6175.03.2	Nut M3	6
61	1.818.0310	Screw M3 × 10	6
62	5.1420.002	Hour Meter	1
63	5.1460.003	Pilot Lamp	1
64	5.1120.023	Receptacle L5-30R, CSA	1
65	1.6177.1.04.1	Lock Nut M4, Flange, Black	3

#	Part Number	Description	Qty.
66	5.1040.004	Remote Excercise Button	1
67	5.1280.009	Fuse, 10A	1
68	1.9074.4.0414.1	Screw/Washer Assembly M4 × 14, Black	1
69	5.1820.009	Charger	1
70	100467.21.10	Wire Assembly	1
71	100467.21	Control Panel Assembly	1
72	9.2600.002	Remote Control	2





## Engine Parts List

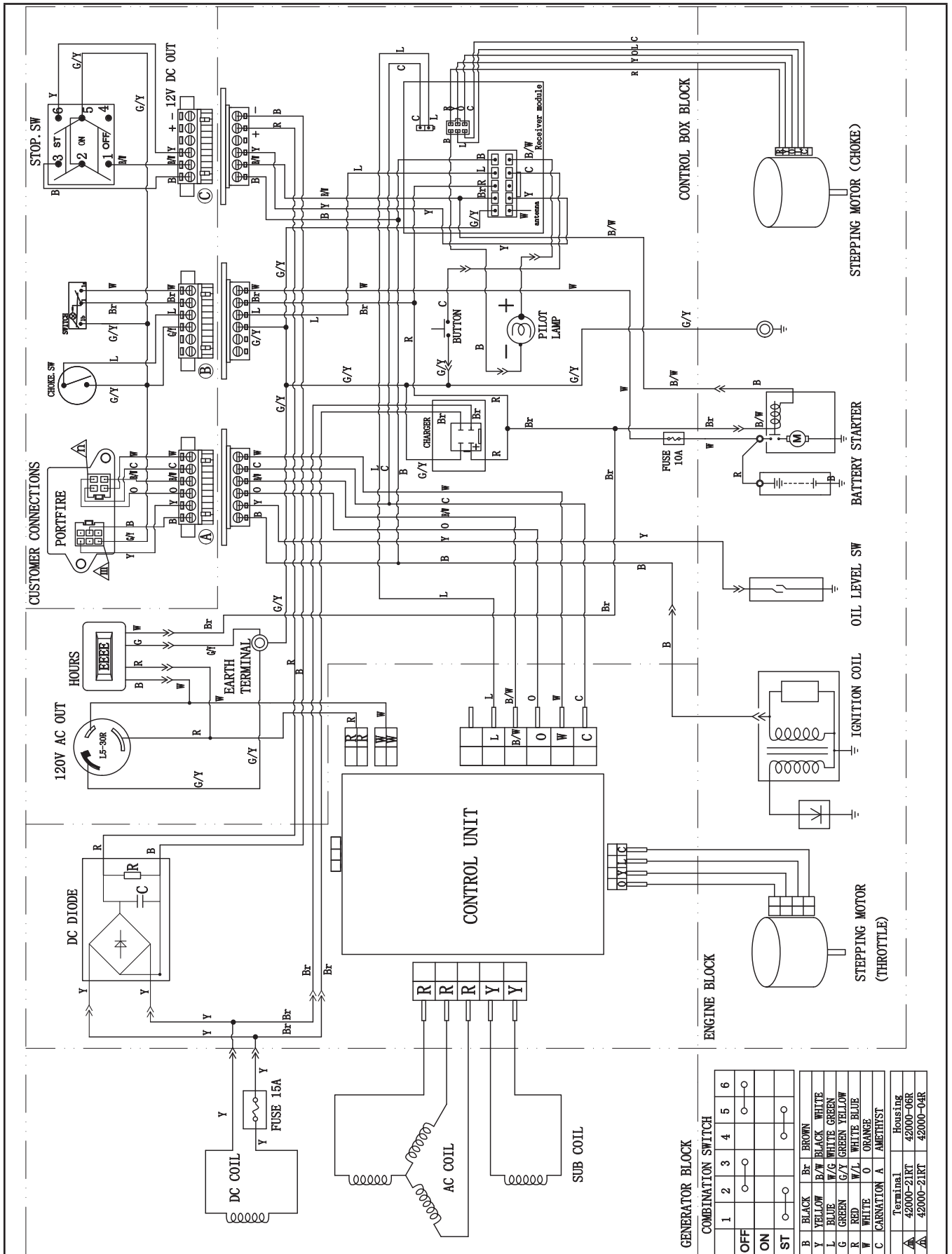
#	Part Number	Description	Qty.
1	1.5789.0615	Flange Bolt M6 × 15	4
2	85.061100.00.2	Cover, Recoil Starter, Black	1
3	21.061005.00	Spring, Recoil Starter	1
4	2.10.003.1	Rope Ø4 × 1550, Black	1
5	21.061001.01	Reel, Recoil Starter	1
6	45.060003.00	Spring, Ratchet	2
7	45.060002.00	Starter Ratchet, Steel	2
8	45.060009.00	Spring Guide, Ratchet	1
9	45.060007.00	Ratchet Guide	1
10	45.060008.00	Screw, Ratchet Guide	1
11	24.040004.00	Guide Plate, Push Rod	1
12	1.5789.0612	Flange Bolt M6 × 12	6
13	85.080100.02.2	Fan Cover, Black	1
14	85.091100.02	Base, Air Cleaner	1
15	21.061300.00	Handle, Recoil, Soft	1
16	24.130004.20	Gasket, Air Cleaner	1
17	85.061000.01	Recoil Assembly	1
18	85.091000.04	Air Cleaner Assembly	1
19	85.131000.03	Carburetor	1
20	2.03.016	Washer Ø10 × Ø16 × 1.5, Drain Bolt	1
21	2.02.006	Nut M14 × 1.5	1
22	23.060001.01	Pulley, Starter	1
23	27.080001.00	Cooling Fan	1
24	24.120100.10	Flywheel	1
25	2.11.001	Oil Seal Ø25 × Ø41.3 × 6	2
26	2.01.010	Stud Bolt M8 × 35	2
27	1.9074.4.0512.1	Screw M5 × 12, Black	2
28	85.132100.03	Support, Stepper Motor	1
29	85.132200.01	Stepper Motor	1
30	1.823.0306.1	Screw M3 × 6	4
31	81.132001.00	Cover, Stepper Motor	2
32	22.130003.00	Gasket, Carburetor	1
33	24.130002.00	Gasket, Insulator	1
34	27.130001.00	Insulator, Carburetor	1
35	27.080600.00	Air Guide, Right Side	1
36	2.01.003	Stud Bolt M6 × 90	2
37	85.030100.01.5	Crankcase	1
38	21.127000.03	Oil Level Sensor	1
39	26.010100.01	Cylinder Head, 224cc	1

#	Part Number	Description	Qty.
40	27.050200.00	Connecting Rod	1
41	85.050100.01	Crankshaft	1
42	1.276.6205.9	Bearing 6205	2
43	24.030008.00	Gasket, Crankcase Cover	1
44	46.031000.00	Oil Dipstick Assembly, Black	1
45	1.6177.06	Flange Nut M6	2
46	85.030007.02	Cover, Crankcase	1
47	1.5789.0832	Flange Bolt M8 × 32	5
48	23.091002.21	Seal, Air Cleaner	1
49	27.030013.01	Seal Strip, Crankcase Cover, Short	1
50	27.030013.00	Seal Strip, Crankcase Cover, Long	1
51	22.123000.02	Ignition Coil	1
52	1.5789.0625	Flange Bolt M6 × 25	3
53	85.091200.04	Cover, Air Cleaner	1
54	85.091003.04	Element, Air Cleaner	1
55	23.091001.21	Separator, Air Cleaner	1
56	45.132200.01	Stepper Motor, Choke Valve	1
57	85.220005.02	Protective Cover, Control Unit, Engine	1
58	2.08.121	Flange Bolt M10 × 65	1
59	1.5789.0840	Flange Bolt M8 × 40	1
60	25.040013.00	Lifter, Valve	2
61	2.04.001	Dowel Pin Ø9 × 14	2
62	27.041000.00	Camshaft	1
63	2.14.012	Woodruff Key 4 × 7.5 × 19	1
64	2.08.037	Drain Bolt M10 × 1.25 × 25	1
65	27.050005.00	Piston	1
66	23.050003.00	Pin, Piston	1
67	2.09.001	Circlip Ø18 × Ø1	2
68	27.050303.00	Ring, Oil	1
69	27.050302.00	Ring, Second Piston	1
70	27.050301.00	Ring, First Piston	1
71	27.030009.01	Gasket, Cylinder Head	1
72	2.04.003	Dowel Pin Ø10 × 14	2
73	23.040002.02	Valve, Intake	1
74	23.040006.02	Valve, Exhaust	1
75	85.080200.02	Air Shroud, Cylinder	1
76	2.15.002(F6RTC)	Spark Plug F6RTC	1

#	Part Number	Description	Qty.
77	1.5789.0865	Flange Bolt M8 × 65	3
78	23.040017.00	Oil Seal, Valve, Steel	2
79	21.040003.00	Spring, Valve	2
80	21.040007.00	Retainer, Exhaust Valve Spring	1
81	21.040001.00	Retainer, Intake Valve Spring	1
82	21.040008.00	Rotator, Exhaust Valve	1
83	24.040202.00	Shaft, Rocker Arm	1
84	22.040009.00	Rocker Arm	2
85	22.040012.00	Screw, Valve Adjustment	2
86	21.040021.00	Nut M6 × 0.5, Lock	2
87	1.97.1.06	Washer Ø6	2
88	1.6177.1.06	Lock Nut M6, Flange	2
89	27.125000.02	Starter Motor Assembly	1
90	24.040201.00	Retainer, Rocker Arm	1
91	23.040010.00	Bolt, Rocker Arm	2
92	27.040005.00	Push Rod	2
93	85.020002.00	Gasket, Cylinder Head Cover	1
94	85.021101.00	Cover, Cylinder Head	1
95	85.020001.00	Breather Tube	1
96	27.131017.01	Main Jet, Standard	1
	27.131017.01.01	Main Jet, Altitude	/
97	1.6177.1.05	Lock Nut M5, Flange	3
98	85.030300.00	Ventilation Chamber Cover Assembly	1
99	85.030022.00	Gasket, Ventilation Chamber Cove	1
100	85.130006.04	Support 20mm, Support plate	1
101	85.130006.03	Support 15mm, Support plate	2
102	85.130005.03	Support, Stepper Motor	1
103	1.6177.1.04	Lock Nut M4, Flange	3
104	2.06.013	Clamp Ø13.5 × b10	1
105	1.16674.0512	Flange Bolt M5 × 12	4
106	1.93.05	Lock Washer Ø5	2
107	1.16674.0516	Flange Bolt M5 × 16	2
108	1.5789.0629	Flange Bolt M6 × 29	1
109	2.04.005	Dowel Pin Ø8 × 10	2
110	27.125100.00	Starter Motor	1

#	Part Number	Description	Qty.
111	23.125200.01	Relay, Starter, Remote Control	1
112	24.040200.00	Rocker Arm Assembly	1

# Wiring Diagram



GENERATOR BLOCK					
1	2	3	4	5	6
OFF	○	○	○	○	○
ON	○	○	○	○	○
ST	○	○	○	○	○

B	BLACK	Br	BROWN
Y	YELLOW	B/W	BLACK WHITE
L	BLUE	W/G	WHITE GREEN
G	GREEN	G/Y	GREEN YELLOW
R	RED	W/L	WHITE BLUE
W	WHITE	O	ORANGE
C	CARNATION	A	AMETHYST

Terminal	Housing
▲ 42000-21RT	42000-06R
▲ 42000-21FT	42000-04R

## WARRANTY\*

**Champion Power Equipment  
500 Hours/1 Year**

### Warranty Qualifications

To register your product for warranty and FREE lifetime call center technical support please visit:

<https://www.championpowerequipment.com/register>

To complete registration you will need to include a copy of the purchase receipt as proof of original purchase. Proof of purchase is required for warranty service. Please register within ten (10) days from date of purchase.

### Repair/Replacement Warranty

CPE warrants to the final purchaser that the mechanical and electrical components will be free of defects in material and workmanship for a period of 500 hours/1 Year (parts and labor) from the original date of purchase. Transportation charges on product submitted for repair or replacement under this warranty are the sole responsibility of the purchaser.

### Warranty Exclusions

This warranty does not cover the following repairs and equipment:

#### Normal Wear

Products with mechanical and electrical components need periodic parts and service to perform well. This warranty does not cover repair when normal use has exhausted the life of a part or the equipment as a whole.

#### Installation, Use and Maintenance

This warranty will not apply to parts and/or labor if the product is deemed to have been misused, neglected, involved in an accident, abused, loaded beyond the product's limits, modified, installed improperly or connected incorrectly to any electrical component. Normal maintenance is not covered by this warranty and is not required to be performed at a facility or by a person authorized by CPE.

### Other Exclusions

This warranty excludes:

- Cosmetic defects such as paint, decals, etc.
- Wear items such as filter elements, o-rings, etc.
- Accessory parts such as starting batteries, and storage covers.
- Failures due to acts of God and other force majeure events beyond the manufacturer's control.

- Problems caused by parts that are not original Champion Power Equipment parts.
- When applicable, this warranty does not apply to products used for prime power in place of a utility.

### Limits of Implied Warranty and Consequential Damage

Champion Power Equipment disclaims any obligation to cover any loss of time, use of this product, freight, or any incidental or consequential claim by anyone from using this product. THIS WARRANTY AND THE ATTACHED U.S. EPA, CARB and/or ECCC EMISSION CONTROL SYSTEM WARRANTIES (WHEN APPLICABLE) ARE IN LIEU OF ALL OTHER WARRANTIES, EXPRESS OR IMPLIED, INCLUDING WARRANTIES OF MERCHANTABILITY OR FITNESS FOR A PARTICULAR PURPOSE.

A unit provided as an exchange will be subject to the warranty of the original unit. The length of the warranty governing the exchanged unit will remain calculated by reference to the purchase date of the original unit.

This warranty gives you certain legal rights which may change from state to state or province to province. Your state or province may also have other rights you may be entitled to that are not listed within this warranty.

### Contact Information

#### Address

Champion Power Equipment, Inc.  
Customer Service  
12039 Smith Ave.  
Santa Fe Springs, CA 90670 USA  
[www.championpowerequipment.com](http://www.championpowerequipment.com)

#### Customer Service

Mon – Fri 8:30 AM – 5:00 PM (PST/PDT)  
Toll Free: 1-877-338-0999  
[info@championpowerequipment.com](mailto:info@championpowerequipment.com)  
Fax no.: 1-562-236-9429

#### Technical Service

Mon – Fri 8:30 AM – 5:00 PM (PST/PDT)  
Toll Free: 1-877-338-0999  
[tech@championpowerequipment.com](mailto:tech@championpowerequipment.com)  
24/7 Tech Support: 1-562-204-1188

*\*Except as otherwise stipulated in any of the following enclosed Emission Control System Warranties (when applicable) for the Emission Control System: U.S. Environment Protection Agency (EPA), California Air Resources Board (CARB) and/or Environment and Climate Change Canada (ECCC).*