

# Table of Contents

---

<b>Introduction .....</b>	<b>1</b>	<b>Specifications .....</b>	<b>11</b>
Replacement Engine.....	1	Engine Specifications.....	11
Accessories.....	1	Fuel.....	11
This Booklet.....	1	Oil.....	11
<b>Manual Conventions .....</b>	<b>2</b>	Spark Plugs .....	11
<b>Safety Rules .....</b>	<b>3</b>	Valve Clearance.....	11
<b>Controls and Features.....</b>	<b>5</b>	Keyway Shaft.....	11
Replacement Engine.....	5	Dimensions .....	12
<b>Assembly .....</b>	<b>6</b>	Parts Diagram .....	13
Install the Spark Arrester .....	6	Parts List .....	14
Add Engine Oil .....	6	<b>Troubleshooting .....</b>	<b>17</b>
Add Fuel.....	6	<b>Warranty .....</b>	<b>18</b>
<b>Operation .....</b>	<b>7</b>	Warranty Qualifications .....	18
Engine Location.....	7	Repair/Replacement Warranty .....	18
Starting the Engine.....	7	Do not return the unit to the place of	
Stopping the Engine .....	7	purchase .....	18
<b>Maintenance .....</b>	<b>8</b>	Warranty Exclusions.....	18
Engine Maintenance.....	8	Normal Wear .....	18
Oil.....	8	Installation, Use and Maintenance.....	18
Spark Plugs .....	8	Other Exclusions .....	18
Air Filter.....	8	Limits of Implied Warranty and	
Spark Arrester .....	9	Consequential Damage .....	18
Cleaning .....	9	Contact Information .....	19
Adjustments .....	9	Address.....	19
Maintenance Schedule.....	9	Customer Service .....	19
<b>Storage .....</b>	<b>10</b>	Technical Service.....	19
Engine Storage.....	10	<b>Notes .....</b>	<b>20</b>



## Introduction

Congratulations on your purchase of a Champion Power Equipment engine. CPE designs and builds engines to strict specifications. With proper use and maintenance, this engine will bring years of satisfying service.

## Replacement Engine

This unit is a gasoline driven, key-way shaft replacement engine. It is designed to supply power for air compressors, pumps, pressure washers, reel-type lawn mowers, go-carts, agricultural and construction equipment and other pulley-style applications.

## Accessories

Champion Power Equipment manufactures and sells accessories designed to help you get the most from your purchase. To find out more, please visit our web site at

[www.championpowerequipment.com](http://www.championpowerequipment.com)

## This Booklet

Every effort has been made to ensure the accuracy and completeness of the information in this manual. We reserve the right to change, alter and/or improve the product and this document at any time without prior notice.

Record the model and serial numbers as well as date and place of purchase for future reference. Have this information available when ordering parts and when making technical or warranty inquiries.

<b>Champion Power Equipment Support</b>
(877) 338-0999
<b>Model Number</b>
C46500 / C46565-2
<b>Serial Number</b>
<b>Date of Purchase</b>
<b>Purchase Location</b>

# Manual Conventions

---

## Manual Conventions

This manual uses the following symbols to help differentiate between different kinds of information. The safety symbol is used with a key word to alert you to potential hazards in operating and owning power equipment.

Follow all safety messages to avoid or reduce the risk of serious injury or death.

### **DANGER**

DANGER indicates an imminently hazardous situation which, if not avoided, *will* result in death or serious injury.

### **WARNING**

WARNING indicates a potentially hazardous situation which, if not avoided, *could* result in death or serious injury.

### **CAUTION**

CAUTION indicates a potentially hazardous situation which, if not avoided, *may* result in minor or moderate injury.

### **CAUTION**

CAUTION used without the safety alert symbol indicates a potentially hazardous situation which, if not avoided, *may* result in property damage.

### **NOTE**

If you have questions regarding your engine, we can help. Please call our help line at (877) 338-0999.

## Safety Rules

### **WARNING**

Read this manual thoroughly before operating your engine. Failure to follow instructions could result in serious injury or death.

### **WARNING**

The engine exhaust from this product contains chemicals known to the state of California to cause cancer, birth defects, or other reproductive harm.

### **DANGER**

Engine exhaust contains carbon monoxide, a colorless, odorless, poison gas. Breathing carbon monoxide will cause nausea, dizziness, fainting or death.

Operate engine outdoors only in a well ventilated area.  
DO NOT operate the engine inside any building, enclosure or compartment.  
DO NOT allow exhaust fumes to enter a confined area through windows, doors, vents or other openings.

### **DANGER**

Rotating parts can entangle hands, feet, hair, clothing and/or accessories.

Traumatic amputation or severe laceration can result.

Keep hands and feet away from rotating parts.  
Tie up long hair and remove jewelry.  
Operate equipment with guards in place.  
DO NOT wear loose-fitting clothing, dangling drawstrings or items that could become caught.

### **WARNING**

Sparks can result in fire or electrical shock.

#### **When servicing the engine:**

Disconnect the spark plug wire and place it where it cannot contact the plug.  
DO NOT check for spark with the plug removed.  
Use only approved spark plug testers.

### **WARNING**

Running engines produce heat.  
Severe burns can occur on contact.  
Combustible material can catch fire on contact.

DO NOT touch hot surfaces.  
Avoid contact with hot exhaust gases.  
Allow equipment to cool before touching.  
Maintain at least three feet of clearance on all sides to ensure adequate cooling.  
Maintain at least five feet of clearance from combustible materials.

# Safety Rules

---

## **DANGER**

Fuel and fuel vapors are highly flammable and extremely explosive.

Fire or explosion can cause severe burns or death.

Unintentional startup can result in entanglement, traumatic amputation or laceration.

### **When adding or removing fuel**

Turn the engine off and let it cool for at least two minutes before removing the fuel cap. Loosen the cap slowly to relieve pressure in the tank. Only fill or drain fuel outdoors in a well-ventilated area.

DO NOT overfill the fuel tank.

Always keep fuel away from sparks, open flames, pilot lights, heat and other sources of ignition.

DO NOT light or smoke cigarettes.

### **When starting the engine**

DO NOT attempt to start a damaged engine.

Make certain that the gas cap, air filter, spark plug, fuel lines and exhaust system are properly in place.

Allow spilled fuel to evaporate fully before attempting to start the engine.

Make certain that the engine is resting firmly on level ground.

### **When transporting or servicing the engine:**

Make certain that the fuel shutoff valve is in the off position and the fuel tank is empty.

Disconnect the spark plug wire.

### **When storing the engine:**

Store away from sparks, open flames, pilot lights, heat and other sources of ignition.

## **WARNING**

Rapid retraction of the starter cord will pull hand and arm towards the engine faster than you can let go.

Unintentional startup can result in entanglement, traumatic amputation or laceration.

Broken bones, fractures, bruises or sprains could result.

When starting engine, pull the starter cord slowly until resistance is felt and then pull rapidly to avoid kickback.

DO NOT start or stop the engine with electrical devices plugged in.

## **CAUTION**

Improper treatment or use of the engine can damage it, shorten its life and void your warranty.

Use the engine only for intended uses.

Operate only on level surfaces.

DO NOT expose engine to excessive moisture, dust, or dirt.

DO NOT allow any material to block the cooling slots.

DO NOT use the engine if:

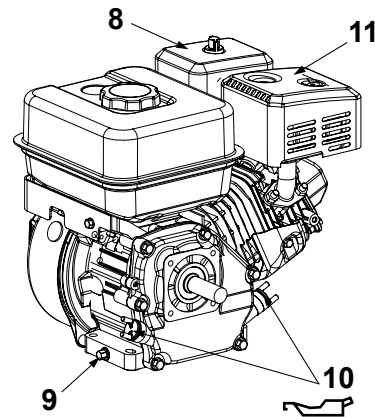
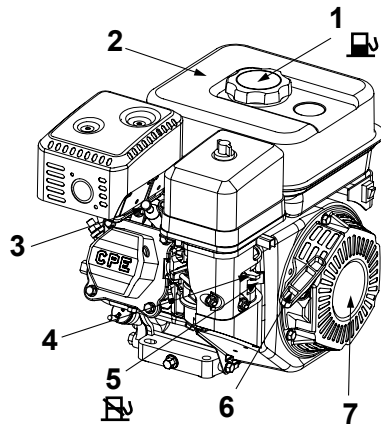
Equipment sparks, smokes or emits flames

Equipment vibrates excessively

## Controls and Features

Read this owner's manual before operating your engine. Familiarize yourself with the location and function of the controls and features. Save this manual for future reference.

### Replacement Engine



**(1) Fuel Filler Cap** – venting gas cap.

**(2) Fuel Tank** – 0.97 gallon capacity fuel tank.

**(3) Spark Plug** – 3/4" long neck

**(4) Choke** – Used to start the engine

**(5) Fuel Valve Lever** – Turn this valve to the "On" position to supply fuel to the engine.

**(6) Starter Grip** – rubber comfort grip for recoil starter.

**(7) Recoil Starter** – Used to start the engine

**(8) Air Cleaner** – Protects the engine by filtering dust and debris from the intake air.

**(9) Oil Drain Plug** – Used to drain the oil

**(10) Oil Filler Cap** – Check and fill engine oil level.

**(11) Muffler** – Full-size muffler for sound abatement

# Assembly

## Assembly

This unit ships from our factory without oil. It must be properly serviced with fuel and oil before operation.

### Install the Spark Arrester (Optional)

Insert the spark arrester screen into the muffler outlet. Secure the spark arrester by placing the cover plate over the end of the screen, with the lettering facing outward. Secure the cover plate with the two screws and lock washers provided with the spark arrester kit.

### Add Engine Oil

#### CAUTION

DO NOT attempt to crank or start the engine before it has been properly filled with the recommended type and amount of oil. Damage to the generator as a result of failure to follow these instructions will void your warranty.

1. Place the engine on a flat, level surface.
2. Remove oil fill cap/dipstick to add oil.
3. Add 0.63 qt (0.6 L) of oil and replace oil fill cap/dipstick.
4. Check engine oil level daily and add as needed.

#### CAUTION

The engine is equipped with a low-oil-shutoff and the will stop when the oil level in the crankcase falls below the threshold level.

#### NOTE

Check oil often during the break-in period. Refer to the Maintenance section for recommended service intervals.

### Add Fuel

1. Use clean, fresh, regular unleaded fuel with a minimum octane rating of 85.
2. DO NOT mix oil with fuel.
3. Clean the area around the fuel cap.
4. Remove the fuel cap
5. Slowly add fuel to the tank. DO NOT overfill. Allow approximately 1/4 inch of space for fuel expansion.
6. Screw on the fuel cap and wipe away any spilled fuel.

#### CAUTION

Use regular unleaded gasoline with a minimum octane rating of 85.

Do not mix oil and gasoline.  
Fill tank to approximately 1/4" below the top of the tank to allow for fuel expansion.  
DO NOT fill fuel tank indoors.  
DO NOT fill fuel tank when the engine is running or hot.  
DO NOT overfill the fuel tank.  
DO NOT light cigarettes or smoke when filling the fuel tank.



## Operation

### *Engine Location*

Place the engine in a well-ventilated area. DO NOT place the engine near vents or intakes where exhaust fumes could be drawn into occupied or confined spaces. Carefully consider wind and air currents when positioning engine.

### *Starting the Engine*

1. Make certain the engine is on a flat, level surface.
2. Check the oil level. Add oil as necessary.
3. Turn the fuel valve to the “On” position.
4. Move the choke lever to the “Choke” position.
5. Pull the starter cord slowly until resistance is felt and then pull rapidly
6. As engine warms up, move the choke lever to “Run”.

### **NOTE**

If the engine starts but does not run, make certain that it is on a flat, level surface. The engine is equipped with a low oil sensor that will prevent the engine from running when the oil level falls below a critical threshold.

### *Stopping the Engine*

1. Let the engine run at no-load for several minutes to stabilize internal temperatures.
2. Turn the ignition switch to the “Off” position.
3. Turn the fuel valve to the “Off” position.

# Maintenance

## Maintenance

The owner/operator is responsible for all periodic maintenance.

### **WARNING**

Never operate a damaged or defective engine.

### **WARNING**

Improper maintenance will void your warranty.

Complete all scheduled maintenance in a timely manner. Correct any issue before operating the engine.

### **NOTE**

For service or parts assistance, contact our help line at (877) 338-0999.

## Engine Maintenance

To prevent accidental starting, remove and ground spark plug wire before performing any service.

### Oil

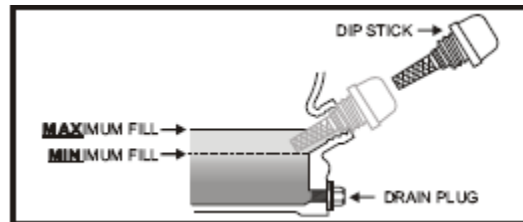
Change oil when the engine is warm. Refer to the oil specification to select the proper grade of oil for your operating environment.

### **CAUTION**

The engine ships from the factory without oil. Before pulling the recoil start or starting the engine, fill with oil. Do not overfill.

1. Remove the oil drain plug with a 15 mm socket and extension.
2. Allow the oil to drain completely.
3. Replace the drain plug.
4. Remove oil fill cap/dipstick to add oil.
5. Add 0.63 qt (0.6 L) of oil and replace oil fill cap/dipstick.

6. Dispose of used oil at an approved waste management facility.



## Spark Plugs

1. Remove the spark plug cable from the spark plug.
2. Use the spark plug tool that shipped with your engine to remove the plug.
3. Inspect the electrode on the plug. It must be clean and not worn to produce the spark required for ignition.
4. Make certain the spark plug gap is 0.7 - 0.8mm (0.028 - 0.031 in.).
5. Refer to the spark plug recommendation chart when replacing the plug.
6. Carefully thread the plug into the engine.
7. Use the spark plug tool to firmly install the plug.
8. Attach the spark plug wire to the plug.

## Air Filter

1. Remove the snap-on cover holding the air filter to the assembly.
2. Remove the foam element.
3. Wash in liquid detergent and water. Squeeze thoroughly dry in a clean cloth.
4. Saturate in clean engine oil.
5. Squeeze in a clean, absorbent cloth to remove all excess oil.
6. Place the filter in the assembly.
7. Reattach the air filter cover and snap in place.

## Spark Arrester

1. Allow the engine to cool completely before servicing the spark arrester.
2. Remove the two screws holding the cover plate which retains the end of the spark arrester to the muffler.
3. Remove the spark arrester screen.
4. Carefully remove the carbon deposits from the spark arrester screen with a wire brush.
5. Replace the spark arrester if it is damaged.
6. Position the spark arrester in the muffler and attach with the two screws.

### CAUTION

A clogged spark arrester will dramatically reduce engine performance.

## Cleaning

### CAUTION

DO NOT spray engine with water.

Water can contaminate the fuel system.

Use a damp cloth to clean exterior surfaces of the engine.

Use a soft bristle brush to remove dirt and oil.

Use an air compressor (25 PSI) to clear dirt and debris from the engine.

## Adjustments

The air-fuel mixture is not adjustable. CPE recommends that you contact our service line at (877) 338-0999 for all other service and/or adjustment needs.

## Maintenance Schedule

Follow the service intervals indicated in the schedule below.

Service your engine more frequently when operating in adverse conditions.

Contact our help line at (877) 338-0999 to locate the nearest Champion Power Equipment certified service dealer for your engine maintenance needs.

<b>Every 8 hours or daily</b>
Check oil level
Clean around air intake and muffler
<b>First 5 Hours</b>
Change oil
<b>Every 50 hours or every season</b>
Clean air filter
Change oil if operating under heavy load or in hot environments
<b>Every 100 hours or every season</b>
Change oil
Clean/Adjust spark plug
Check/Adjust valve clearance *
Clean spark arrester
Clean fuel tank and filter *
<b>Every 3 years</b>
Replace fuel line

- \* To be performed by knowledgeable, experienced owners or Champion Power Equipment certified service dealers

# Storage

---

## Storage

Engines stored for over 30 days need to be drained of fuel to prevent gum from forming in the fuel system, carburetor components and hoses. For long term storage, please follow these guidelines.

### *Engine Storage*

1. Allow the engine to cool completely before storage.
2. Clean the engine according to the instructions in the Maintenance section.
3. Drain all fuel completely from the fuel line and carburetor to prevent gum from forming.
4. Add a fuel stabilizer into the fuel tank.
5. Change the oil.
6. Remove the spark plug and pour about ½ ounce of oil into the cylinder. Crank the engine slowly to distribute the oil and lubricate the cylinder.
7. Reattach the spark plug.

## Specifications

### Engine Specifications

Engine	6.5 HP OHV CPE Single Cylinder 4-Stroke Air-cooled
--------	-------------------------------------------------------------

#### NOTE

The gross horsepower of this engine was laboratory-rated at our factory in accordance with SAE J1940 as configured to meet safety, emissions, and operating requirements. The actual engine horsepower on this class of engine may be significantly lower..

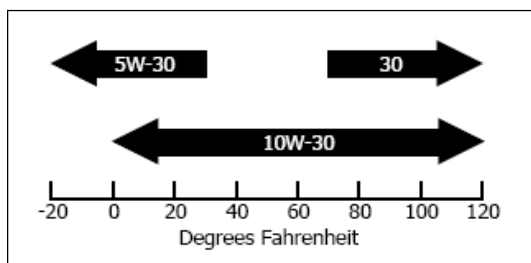
PTO Rotation	Counterclockwise
Ignition Mode	TCI (transistorized)
Displacement	190 cc
Torque (max)	8.7 ft. lbs. at 2800 RPM
Compression	8.5:1
Horizontal Shaft	$\frac{3}{4}$ " x 2 $\frac{7}{16}$ " 1.91 cm x 6.19 cm
End Hole	Tapped 5/15" 24 UNF
Fuel Capacity	0.97 gallons (3.7 L)
Weight	37.5 lbs. (17 kg)
Height	13.4 inches (34 cm)
Width	14.4 inches (36.5 cm)
Length	12.6 inches (32 cm)

### Fuel

Fuel capacity is 0.97 US gallons (3.7 L). Use regular unleaded gasoline with a minimum octane rating of 85.

### Oil

Oil capacity is 0.63 qt (0.6 L).



### Spark Plugs

Your engine comes equipped with a  $\frac{3}{4}$ " long reach plug (14mm).

Intermittent use (less than 1 hour/month) or colder temperatures (below 60°F):  
NGK B6ES or equivalent

Moderate use (less than 3 hours/month) or seasonal temperatures (50-80°F):  
NGK B7ES or equivalent

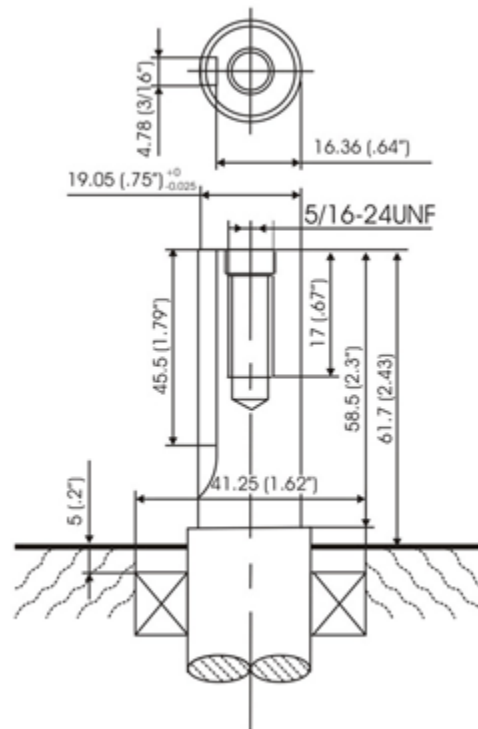
Extreme use (continuous) or hot climates (80-100°F):  
NGK B8ES or equivalent

Make certain the spark plug gap is 0.7 - 0.8mm (0.028 - 0.031 in.).

### Valve Clearance

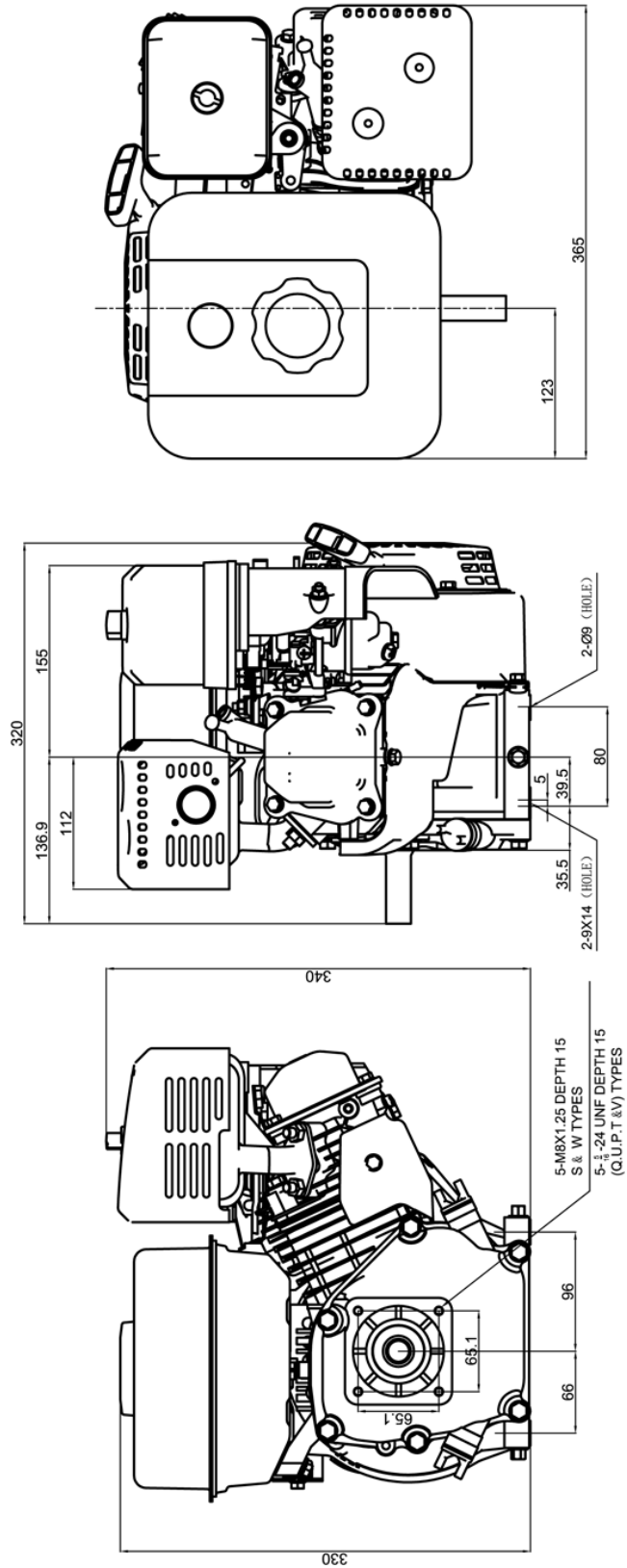
Intake 0.13-0.17mm (0.005 – 0.007 in.)  
Exhaust 0.18-0.22mm (0.007 – 0.009 in.)

### Keyway Shaft

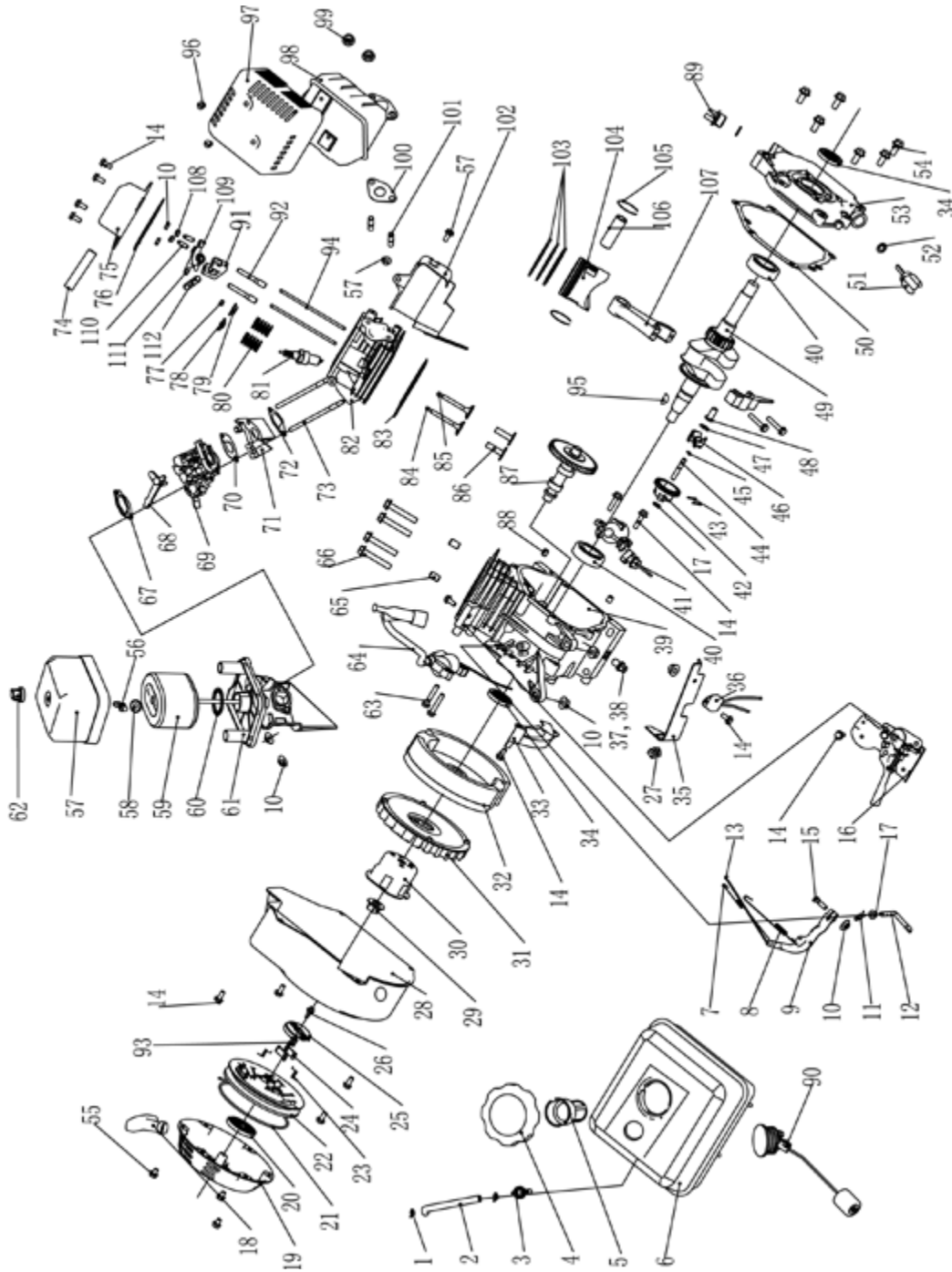


# Specifications

## Dimensions



## Parts Diagram



# Specifications

## Parts List

Item	Part Number	Description	Qty.
1	ST168F-107-0001	Clip	2
2	ST168F-107-0002-000001	Tube	1
3	ST168F-107-0003	Fuel Tank Joint	1
4	ST168F-107-0004	Fuel Tank Cap	1
5	ST168F-107-0005	Fuel Filter	1
6	ST168F-107-0006-000100	Fuel Tank	1
7	ST168F-111-0001	Throttle Return Spring	1
8	ST168F-111-0002	Governor Spring	1
9	ST160F-111-0003	Governor Arm	1
10	GB41-N-6	Nut M6	8
11	ST160F-111-0004	Lock Pin	1
12	ST160F-111-0005	Governor Arm Shaft	1
13	ST168F-111-0006	Governor Rod	1
14	GB5789-FB6-12	Flange Bolt M6×12	13
15	ST160F-111-0007	Governor Arm Bolt	1
16	ST168F-111-0008	Control Assembly	1
17	ST160F-111-0009	Governor Washer	2
18	ST160F-106-0001-000101	Recoil Starter Knob	1
19	ST160F-106-0002-000100	Recoil Starter Housing	1
20	ST160F-106-0003	Recoil Starter Spring	1
21	ST160F-106-0004	Recoil Starter Rope	1
22	ST160F-106-0005	Recoil Starter Reel	1
23	ST160F-106-0006	Return Spring	2
24	ST160F-106-0007	Starter Ratchet	2
25	ST160F-106-0008	Ratchet Guide	1
26	ST160F-106-0009	Setting Screw	1
27	ST168F-112-0001	Ignition Switch	1
28	ST168F-106-0010	Fan Cover	1
29	ST160F-106-0011	Nut M14	1
30	ST160F-106-0012	Start Hub	1
31	ST168F-106-0013	Cooling Fan	1
32	ST168F-112-0002	Flywheel	1
33	ST168F-103-0001	Side Place	1
34	ST168F-103-0002	Oil Seal	2
35	ST168F-112-0003	Switch Trim Plate	1
36	ST160F-112-0004	Diode	1
37	ST160F-103-0003	Drain Plug	2
38	ST160F-103-0004	Drain Bolt Washer	2
39	ST168F-2-103-0005-000100	Crankcase	1
40	GB276-BB-6205-UU	Radial Ball Bearing 6205 Unsealed	2
41	ST160F-103-0006	Oil Level Switch Assembly	1
42	ST160F-105-0001	Governor Weight Holder	1
43	ST160F-105-0002	Governor Weight Pin	2
44	ST160F-106-0003	Governor Shaft	1
45	ST160F-105-0004	Governor Holder Clip	1



# Specifications

Item	Part Number	Description	Qty.
46	ST160F-105-0005	Governor Weight	2
47	ST160F-105-0006	Governor Shaft Washer	1
48	ST160F-105-0007	Governor Cover	1
49	ST168F-2-105-0008-S	Crankshaft Complete	1
50	ST168F-103-0007	Case Over Packing	1
51	ST160F-103-0008-010100	Oil Filler Cap	1
52	ST160F-103-0009	Oil Filler Cap Packing	2
53	ST168F-103-0010-000100	Crankcase Cover	1
54	GB5789-FB8-32	Flange Bolt 8×32	6
55	GB5789-FB6-8	Flange Bolt 6×8	5
56	ST160F-107-0007	Air Cleaner Cover Nut	1
57	ST168F-107-0008-000100	Air Cleaner Cover	1
58	ST168F-107-0009	Air Cleaner Element Washer	1
59	ST168F-107-0010-000101	Air Cleaner Element	1
60	ST168F-107-0011	Air Cleaner Cap Packing	1
61	ST168F-107-0012-000100	Air Cleaner Elbow Comp	1
62	ST168F-107-0013-010100	Air Cleaner Cover Nut	1
63	GB5789-B6-25	Flange bolt 6×25	3
64	ST168F-112-0005	Ignition Coil	1
65	FMD-DP10-16	Dowel pin 10×16	2
66	GB5789-FB8-55	Flange bolt 8×55	4
67	ST160F-107-0014	Carburetor Washer	1
68	ST168F-107-0015	Choke Lever	1
69	ST168F-2-1130005N	Carburetor Assembly	1
70	ST160F-107-0017	Carburetor Packing	1
71	ST168F-107-0018	Carburetor Insulator	1
72	ST168F-107-0019	Insulator Packing	1
73	ST160F-104-0001	Stud Bolt 6×113	2
74	ST160F-104-0002	Breather Tube	1
75	ST160F-104-0003-000100	Rocker Arm Cover	1
76	ST160F-104-0004	Rocker Cover Packing	1
77	ST160F-104-0005	Valve Rotator	1
78	ST160F-104-0006	Intake Valve Spring Retainer	1
79	ST160F-104-0007	Exhaust Valve Spring Retainer	1
80	ST160F-104-0008	Valve Spring	2
81	ST168F-112-0006	Spark Plug	1
82	ST168F-2-104-0009	Cylinder Head Complete	1
83	ST168F-2-104-0010	Cylinder Head Gasket	1
84	ST168F-104-0011	Intake Valve	1
85	ST168F-104-0012	Exhaust Valve	1
86	ST168F-2-103-0011	Valve Lifter	2
87	ST168F-2-105-0009	Camshaft Assembly	1
88	FMD-DP8-14	Dowel Pin 8×14	2
89	ST160F-103-0012-010100	Oil Filler Plug	1
90	ST168F-107-0020-000100	Fuel Meter Assembly	1
91	ST168F-104-0013	Pillow Block	1
92	ST168F-104-0014	Pillow Block Stud	2

# Specifications

---

Item	Part Number	Description	Qty.
93	ST160F-106-0014	Ratchet Guide Spring	1
94	ST168F-104-0015	Push Rod	2
95	ST160F-105-0010	Key	1
96	GB1667-S5-8	Screw M5×8	4
97	ST168F-110-0001	Muffler Protector	1
98	ST168F-110-0002	Muffler	1
99	GB41-N-8	Nut M8	2
100	ST160F-110-0003	Muffler Packing	1
101	ST160F-110-0004	Stud Bolt	2
102	ST168F-104-0017	Shroud	1
103A	ST168F-105-0011	First Ring (Chrome)	1
103B	ST168F-105-0012	Second Ring (Black)	1
103C	ST168F-105-0013	Oil Ring Set	1
104	ST168F-2-105-0014	Piston	1
105	ST168F-105-0015	Piston Pin Clip	2
106	ST168F-105-0016	Piston Pin	1
107	ST168F-105-0017	Connecting Rod	1
108	ST168F-104-0018	Tappet Lock Nut	2
109	ST168F-104-0019	Exhaust Rocker Arm	1
110	ST168F-104-0020	Tappet Adjusting Bolt	2
111	ST168F-104-0021	Intake Rocker Arm	1
112	ST168F-104-0022	Rocker Arm Pin	1

## Troubleshooting

<b>Problem</b>	<b>Cause</b>	<b>Solution</b>
Engine will not start	No fuel	Add fuel
	Faulty spark plug	Replace spark plug
Engine will not start; Engine starts but runs roughly	Low oil level	Fill crankcase to the proper level Place engine on a flat, level surface
	Choke in the wrong position.	Adjust choke.
	Spark plug wire loose	Attach wire to spark plug
Engine shuts down during operation	Out of fuel	Fill fuel tank
	Low oil level	Fill crankcase to the proper level. Place engine on a flat, level surface
Engine cannot supply enough power or overheating	Insufficient ventilation	Check for air restriction. Move to a well ventilated area

# Warranty

---

## Warranty

CHAMPION POWER EQUIPMENT  
ONE YEAR LIMITED WARRANTY

Effective September 1, 2006. Replaces all undated warranties and all warranties dated before September 1, 2006.

### Warranty Qualifications

Champion Power Equipment (CPE) will register this warranty upon receipt of your Warranty Registration Card and a copy of your sales receipt from one of CPE's retail locations as proof of purchase.

Please submit your warranty registration and your proof of purchase within ten (10) days of the date of purchase.

### Repair/Replacement Warranty

CPE warrants to the original purchaser that the mechanical and electrical components will be free of defects in material and workmanship for a period of one (1) year from the original date of purchase (90 days for commercial & industrial use). Transportation charges on product submitted for repair or replacement under this warranty are the sole responsibility of the purchaser. This warranty only applies to the original purchaser and is not transferable.

### Do not return the unit to the place of purchase

Contact CPE's Technical Service and CPE will troubleshoot any issue via phone or e-mail. If the problem is not corrected by this method, CPE will, at its option, authorize evaluation, repair or replacement of the defective part or component at a CPE Service Center. CPE will provide you with a case number for warranty service. Please keep it for future reference. Repairs or replacements without prior authorization, or at an unauthorized repair facility, will not be covered by this warranty.

### Warranty Exclusions

This warranty does not cover the following repairs and equipment:

#### Normal Wear

Engines need periodic parts and service to perform well. This warranty does not cover repair when normal use has exhausted the life of a part or the equipment as a whole.

#### Installation, Use and Maintenance

This warranty will not apply to parts and/or labor if this engine is deemed to have been misused, neglected, involved in an accident, abused, loaded beyond the engine's limits, modified, installed improperly or connected incorrectly to any component. Normal maintenance such as spark plugs, air filters, adjustments, fuel system cleaning and obstruction due to buildup is not covered by this warranty.

#### Other Exclusions

This warranty excludes:

Cosmetic defects such as paint, decals, etc.  
Wear items such as filter elements, o-rings, etc.

Accessory parts such as starting batteries, and storage covers.

Failures due to acts of God and other force majeure events beyond the manufacturer's control.

Problems caused by parts that are not original Champion Power Equipment parts.

#### Limits of Implied Warranty and Consequential Damage

Champion Power Equipment disclaims any obligation to cover any loss of time, use of this product, freight, or any incidental or consequential claim by anyone from using this engine. THIS WARRANTY IS IN LIEU OF ALL OTHER WARRANTIES, EXPRESS OR IMPLIED, INCLUDING WARRANTIES OF MERCHANTABILITY OR FITNESS FOR A PARTICULAR PURPOSE

A unit provided as an exchange will be subject to the warranty of the original unit. The length of the warranty governing the exchanged unit will remain calculated by

reference to the purchase date of the original unit.

This warranty gives you certain legal rights which may change from state to state. Your state may also have other rights you may be entitled to that are not listed within this warranty.

## **Contact Information**

### **Address**

Champion Power Equipment, Inc.  
Customer Service  
10006 Santa Fe Springs Rd.  
Santa Fe Springs, CA 90670

### **Customer Service**

Mon – Fri 8:30 AM – 5:00 PM (PST/PDT)  
Toll Free: 1-877-338-0999  
Fax no.: 1-562-236-9429

### **Technical Service**

Mon – Fri 8:30 AM – 5:00 PM (PST/PDT)  
Toll Free: 1-877-338-0999  
[tech@championpowerequipment.com](mailto:tech@championpowerequipment.com)

## Notes

---

## Notes