

CHAMPION

POWER EQUIPMENT™

OWNER'S MANUAL AND OPERATING INSTRUCTIONS



22 Ton LOG SPLITTER



MODEL NUMBER
92208

SAVE THESE INSTRUCTIONS
Important Safety Instructions
are included in this manual.

MADE IN CHINA
REV 92208-20160927

10006 Santa Fe Springs Road
Santa Fe Springs CA 90670
USA / 1-877-338-0999
www.championpowerequipment.com

Have questions or need assistance?

Do not return this product to the store!

WE ARE HERE TO HELP!

Visit our website:

www.championpowerequipment.com

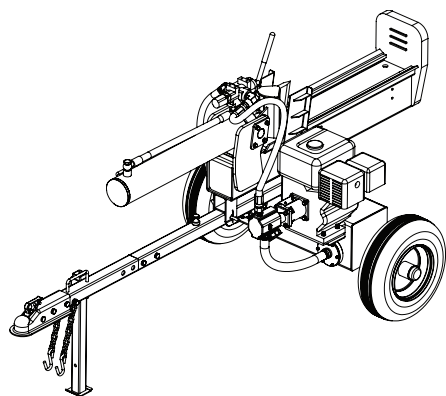
for more info:

- Product Info & Updates
- Tech Bulletins
- Frequently Asked Questions
- Product Registration

– or –

Call our Customer Care Team Toll-Free at:

1-877-338-0999



22 Ton LOG SPLITTER

TABLE OF CONTENTS

Introduction	1	Specifications	16
Introduction	1	Log Splitter Specifications	16
Portable Log Splitter	1	Engine Specifications	16
Accessories	1	Spark Plugs	16
This Booklet	1	Maintenance Valve Clearance	16
Manual Conventions	2	Hydraulic Oil System	16
Safety Rules	3	Engine Fuel	16
Training	5	Engine Oil	16
Preparation	5	Parts Diagram	17
Operation	6	Parts List	18
Maintenance and Storage	6	Engine Parts Diagram	19
Controls and Features	7	Engine Parts List	20
Log Splitter	7	Troubleshooting	21
Assembly	8	Warranty	22
Open Shipping Crate	8	Warranty Qualifications	22
Assemble Tow Bar	8	Repair/Replacement Warranty	22
Add Hydraulic Oil	8	Do Not Return The Unit To The Place Of Purchase	22
Add Engine Oil	9	Warranty Exclusions	22
Add Engine Fuel	9	Normal Wear	22
Operation	10	Installation, Use and Maintenance	22
Before Each Use Inspect the Log Splitter	10	Other Exclusions	22
Towing Log Splitter Safety	10	Limits of Implied Warranty and Consequential Damage	22
Log Splitter Location	10	Contact Information	22
Starting the Engine	11	Address	22
Stopping the Engine	11	Customer Service	22
Log Splitter Operation	12	Technical Service	22
Maintenance and Storage	13		
Engine Maintenance	13		
Oil	13		
Spark Plugs	13		
Air Filter	13		
Log Splitter Maintenance	13		
Changing the Hydraulic Oil and Oil Filter	14		
Cleaning	15		
Maintenance Schedule	15		
Storage	15		
Log Splitter Storage	15		
Engine stored for Less than 30 Days	15		
Engines Stored for Over 30 Days	15		

INTRODUCTION

Introduction

Congratulations on your purchase of a Champion Power Equipment log splitter. CPE designs and builds log splitters to strict specifications. With proper use and maintenance, this log splitter will bring years of satisfying service.

Portable Log Splitter

This unit is a gasoline engine driven hydraulic log splitter. It is designed to split wood logs for use as firewood for a stove or fireplace. This log splitter will only split logs lengthwise, with the grain only.

Accessories

Champion Power Equipment manufactures and sells accessories designed to help you get the most from your purchase. To find out more, please visit our website at:
→ www.championpowerequipment.com

This Booklet

Every effort has been made to ensure the accuracy and completeness of the information in this manual. We reserve the right to change, alter and/or improve the product and this document at any time without prior notice.

Record the model and serial numbers as well as date and place of purchase for future reference. Have this information available when ordering parts and when making technical or warranty inquiries.

Champion Power Equipment Support	
1-877-338-0999	
Model Number	
92208	
Serial Number	
Date of Purchase	
Purchase Location	
For Oil Type see "Add Engine Oil" section. For Fuel Type see "Add Fuel" section.	

This manual uses the following symbols to help differentiate between different kinds of information. The safety symbol is used with a key word to alert you to potential hazards in operating and owning power equipment.

Follow all safety messages to avoid or reduce the risk of serious injury or death.

 **DANGER**

DANGER indicates an imminently hazardous situation which, if not avoided, **will** result in death or serious injury.

 **WARNING**

WARNING indicates a potentially hazardous situation which, if not avoided, **could** result in death or serious injury.

 **CAUTION**

CAUTION indicates a potentially hazardous situation which, if not avoided, **may** result in minor or moderate injury.

CAUTION

CAUTION used without the safety alert symbol indicates a potentially hazardous situation which, if not avoided, **may** result in property damage.

 **NOTE**

If you have questions regarding your log splitter, we can help. Please call our help line at **1-877-338-0999**

SAFETY RULES

WARNING

Read this manual thoroughly before operating your log splitter. Failure to follow instructions could result in serious injury or death.

WARNING

The engine exhaust from this product contains chemicals known to the state of California to cause cancer, birth defects, or other reproductive harm.

DANGER

Log Splitter engine exhaust contains carbon monoxide, a colourless, odourless, poison gas. Breathing carbon monoxide will cause nausea, dizziness, fainting or death. If you start to feel dizzy or weak, get to fresh air immediately.

Operate log splitter outdoors only in a well ventilated area. DO NOT operate the log splitter inside any building, enclosure or compartment. DO NOT allow exhaust fumes to enter a confined area through windows, doors, vents or other openings. **DANGER CARBON MONOXIDE**, using a log splitter indoors **CAN KILL YOU IN MINUTES**.

DANGER

Rotating parts can entangle hands, feet, hair, clothing and/or accessories. Traumatic amputation or severe laceration can result.

Keep hands and feet away from rotating parts. Tie up long hair and remove jewellery. Operate equipment with guards in place. DO NOT wear loose-fitting clothing, dangling drawstrings or items that could become caught.

DANGER

Sparks can result in fire or electrical shock.

When servicing the engine:

Disconnect the spark plug wire and place it where it cannot contact the plug. DO NOT check for spark with the plug removed. Use only approved spark plug testers.

WARNING

Running engines produce heat. Severe burns can occur on contact. Combustible material can catch fire on contact.

DO NOT touch hot surfaces. Avoid contact with hot exhaust gases. Allow equipment to cool before touching. Maintain at least 91.4 cm (3 ft.) of clearance on all sides to ensure adequate cooling. Maintain at least 1.5 m (5 ft.) of clearance from combustible materials.

WARNING

Crush hazard

Wedge can cut through skin and break bones. Keep all limbs away from wedge and endplate.

WARNING

Projectile hazard

Pieces of log may be ejected from the splitter while operating. **Wear ANSI approved safety glasses when operating. Be alert.**

WARNING

Keep operator work zone clear

Keep work zone clear of debris while working to ensure safe footing.

⚠ DANGER

Skin injection hazard. High-pressure hydraulic oil can inject under your skin.

Make sure all fittings are tightly secure before applying pressure. Relieve system of pressure before servicing.

⚠ WARNING

Towing hazard

ALWAYS check all local and state regulations regarding towing, licensing and lights before towing your log splitter. Review towing safety warnings in your towing vehicle manual.

Drive safely. Be aware of the added length of the log splitter. NEVER ride or transport cargo on the log splitter. Choose a level surface to operate the log splitter.

**NEVER EXCEED MAX. Towing Speed
72 km/h (45 MPH)**

⚠ WARNING

Rapid retraction of the starter cord will pull hand and arm towards the engine faster than you can let go. Unintentional startup can result in entanglement, traumatic amputation or laceration. Broken bones, fractures, bruises or sprains could result.

When starting engine, pull the starter cord slowly until resistance is felt and then pull rapidly to avoid kickback.

⚠ CAUTION

Improper treatment or use of the log splitter can damage it, shorten its life and void your warranty.

Use the log splitter only for intended uses. Operate only on level surfaces. DO NOT expose log splitter to excessive moisture, dust, or dirt.

DO NOT allow any material to block the cooling slots. DO NOT use the engine if:

- Equipment sparks, smokes or emits flames
- Equipment vibrates excessively

⚠ DANGER

Fuel and fuel vapours are highly flammable and extremely explosive.

Fire or explosion can cause severe burns or death. Unintentional startup can result in entanglement, traumatic amputation or laceration.

When adding or removing fuel:

Turn the engine off and let it cool for at least two minutes before removing the fuel cap. Loosen the cap slowly to relieve pressure in the tank.

Only fill or drain fuel outdoors in a well-ventilated area.

DO NOT pump gas directly into the log splitter at the gas station. Use an approved container to transfer the fuel to the log splitter.

DO NOT overfill the fuel tank.

Always keep fuel away from sparks, open flames, pilot lights, heat and other sources of ignition.

DO NOT light or smoke cigarettes.

When starting the engine:

DO NOT attempt to start a damaged engine.

Make certain that the gas cap, air filter, spark plug, fuel lines and exhaust system are properly in place.

Allow spilled fuel to evaporate fully before attempting to start the engine.

Make certain that the log splitter is resting firmly on level ground.

When operating the log splitter:

DO NOT move or tip the log splitter during operation.

DO NOT tip the log splitter or allow fuel or oil to spill.

Block the tires to prevent unintended movement.

When transporting or servicing the log splitter:

Make certain that the fuel shutoff valve is in the off position and the fuel tank is empty.

Disconnect the spark plug wire.

When storing the log splitter:

Store away from sparks, open flames, pilot lights, heat and other sources of ignition.

⚠ CAUTION

Parts of the hydraulic circuit (cylinder, pump, valve-body, hoses) can become very hot during operation.

SAFETY RULES

Training

1. Read the Operator's Manual completely before attempting to use this log splitter.
2. Do not allow anyone to operate your log splitter who has not read the Operator's Manual or has not been instructed on the safe use of the log splitter.
3. Never allow children or untrained adults to operate this machine.
4. Many accidents occur when more than one (1) person operates the log splitter. If a helper is assisting in loading logs to be split, never actuate controls until helper is clear of the area.
5. Never allow anyone to ride on the machine.
6. Never transport cargo on the log splitter.
7. High fluid pressures are developed in hydraulic log splitters. Pressurized hydraulic fluid escaping through a pin hole opening can puncture skin and cause severe blood poisoning. Therefore, the following instructions should be heeded at all times.
 - a. Do not operate the unit with frayed, kinked, cracked or damaged hoses, fittings, or tubing.
 - b. Stop the engine and relieve hydraulic system pressure before changing or adjusting fittings, hoses, tubing, or other system components.
 - c. Do not adjust the pressure settings of the pump or valve.
 - d. Do not check for leaks with your hand.
Leaks can be detected by passing cardboard or wood over the suspected area. Look for discoloration. If injured by escaping fluid, see a doctor at once. Serious infection or reaction can develop if proper medical treatment is not administered immediately.
8. Keep the operator zone and adjacent area clear for safe, secure footing.
9. If your log splitter is equipped with an internal-combustion engine and intended for use near any unimproved forest, brush, or grass covered land, the engine exhaust should be equipped with a spark arrestor. Make sure you comply with local, state, and federal codes. Take appropriate fire-fighting equipment with you.
10. Log splitters should be used only for splitting wood. Do not use for other purposes unless the manufacturer provides attachments and instructions.

Preparation

1. Be thoroughly familiar with all controls and with proper use of the equipment.
2. Safety Gear:
 - a. Always wear safety shoes or heavy boots when operating the machine.
 - b. Always wear safety glasses or goggles when operating the machine.
 - c. Never wear jewelry or loose-fitting clothing that might become entangled in moving or rotating parts of the machine.
3. Make sure the splitter is on a level surface. Block tires and ensure support leg is secure to prevent unintended movement of the log splitter during operation.
 - a. Always operate the splitter from the manufacturer's indicated operator zone.
4. Logs to be split on ram-type units should be cut as squarely as possible.
5. Fuel:
 - a. Use an approved fuel container.
 - b. Never add fuel to a running or hot engine.
 - c. Fill fuel tank outdoors with extreme care. Never fill fuel tank indoors.
 - d. Replace gasoline cap securely and clean up any spilled fuel.

Operation

1. Before starting this log splitter, review all safety rules. Failure to follow these rules may result in serious injury to the operator or bystanders.
2. Be sure to confirm all hose connections and hose clamps are tight before each use. It is possible for connections to vibrate loose over time.
3. Never leave the machine unattended with the power source operating.
4. Never operate the machine when under the influence of alcohol, drugs or medication.
5. The machine owner should instruct all operators in safe log splitter operation.
6. Always operate the log splitter with all safety equipment in place and all controls properly adjusted for safe operation.
7. Always operate the log splitter at manufacturer's recommended speed.
8. Always keep hands and feet clear of moving parts.
9. When loading a ram-type log splitter, place your hands on the sides of the log, not the ends. Never place your hands or any part of your body between a log and any part of the log splitter.
 - a. On ram-type log splitters, never attempt to split more than one (1) log at a time unless the ram has been fully extended and a second log is needed to complete the separation of the first log.
10. On ram-type log splitters on which the logs are not cut square, the longest portion of the log should be rotated down and the most square end placed against the ram.
11. Use only your hand to operate the log splitter controls.
12. Do not refuel the engine until it has cooled for several minutes.

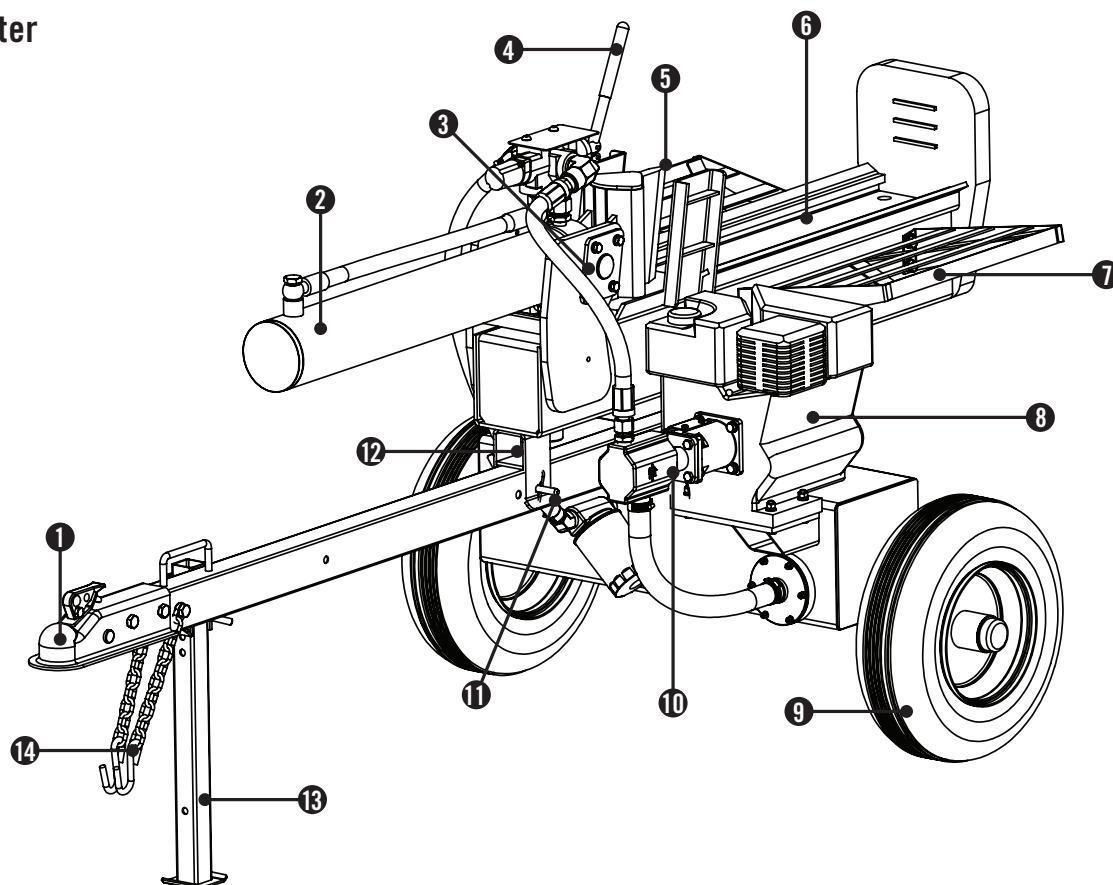
Maintenance and Storage

1. Always shut off the power source while repairing or adjusting the splitter except as recommended by the manufacturer.
2. Clean debris and chaff from the engine cylinder, cylinder head fins, blower house rotation screen, and muffler areas. If the engine is equipped with a spark arrestor muffler, clean and inspect it regularly (follow manufacturer's service instructions). Replace, if damaged.
3. Never store the unit indoors with fuel in the tank. Fumes might reach an open flame spark. Allow the engine to cool before storing in any enclosure.
4. Clear debris from moveable parts, but only when the power source is shut off.
5. Check to be sure all nuts and bolts are tight to assure the equipment is in safe working condition.

CONTROLS AND FEATURES

Read this owner's manual before operating your log splitter. Familiarize yourself with the location and function of the controls and features. Save this manual for future reference.

Log Splitter



- | | |
|---|--|
| <p>(1) 5 cm (2 in.) Ball Coupler – For towing the log splitter behind your vehicle.</p> <p>(2) Hydraulic Cylinder – Bore 10.2 cm (4 in.) x 57.5 cm (22.63 in.) stroke. Rated to 3500 psi.</p> <p>(3) Mounting Plates – Holds hydraulic cylinder in place.</p> <p>(4) Control Valve Handle – Controls the movement of the cutting wedge.</p> <p>(5) Wedge</p> <p>(6) Splitting Beam</p> <p>(7) Log Catchers</p> | <p>(8) Engine – 196cc, OHV, 4-stroke, air cooled.</p> <p>(9) Tires – Maximum travel speed is 72 km/h (45 MPH).</p> <p>(10) Hydraulic Pump – Pumps hydraulic oil through the system.</p> <p>(11) Beam Lock Pin – Secures in either horizontal or vertical position.</p> <p>(12) Beam Bracket – Holds splitting beam in place.</p> <p>(13) Support Leg – Supports log splitter while operating. Raise leg for towing.</p> <p>(14) Safety Chains – For use while towing.</p> |
|---|--|

Your log splitter requires some assembly.

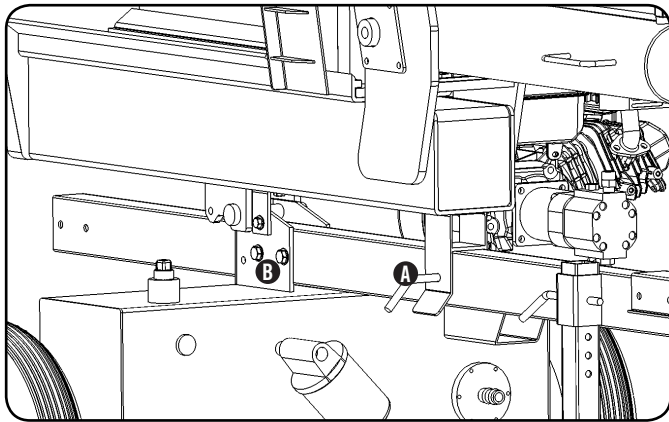
If you have any questions regarding the assembly of your log splitter, call our help line at **1-877-338-0999**. Please have your serial number and model number available.

Open Shipping Crate

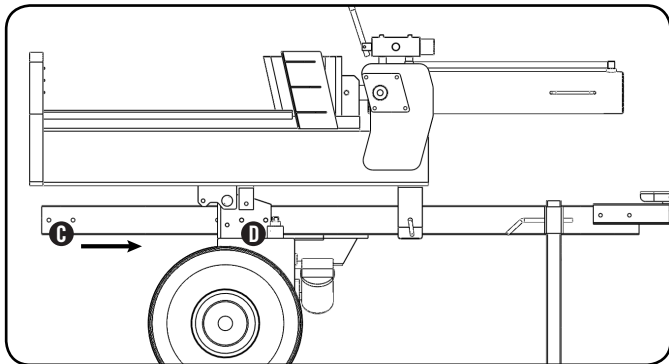
1. Set the shipping crate on a solid, flat surface.
2. Carefully cut the shipping bands and remove lid of shipping crate.
3. Locate all hardware before beginning assembly.

Assemble Tow Bar

1. Remove splitting beam lock pin that attaches beam to tow bar in horizontal position. (A)
2. Remove the 2 nuts and bolts that fasten the tow bar to the hydraulic oil tank. (B)

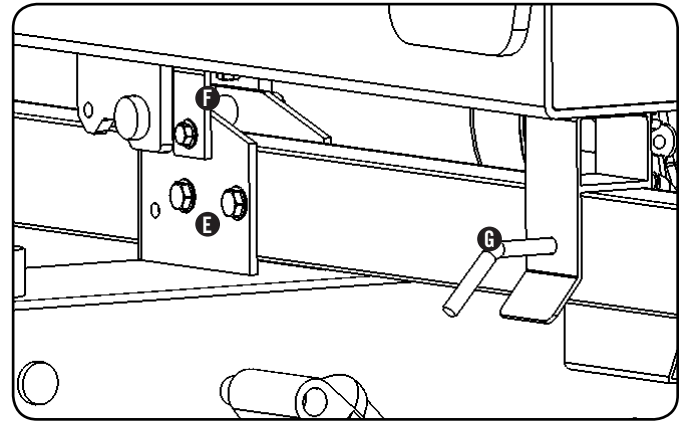


3. Slide the tow bar out to align the bolt holes (C) at the end of the tow bar with the mounting holes (D) on the the hydraulic tank.



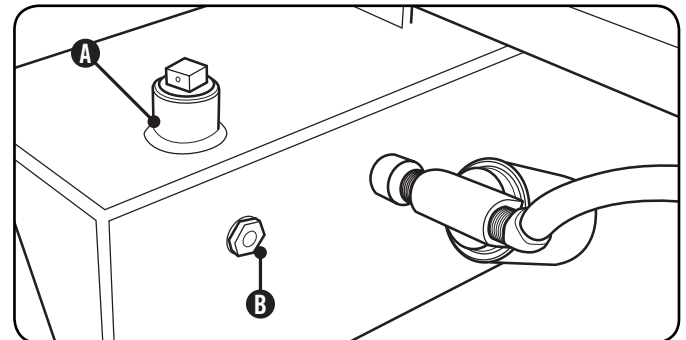
4. With the tow bar in extended position, replace 2 nuts and bolts removed in step 2 and tighten to 47.45 joules (35 ft-lb). (E)
5. Remove 2 bolts and shipping bracket fastened to the bottom of the splitting beam near the pivot (F). Discard shipping bracket and hardware.
6. Replace splitting beam lock pin removed in step 1 to secure beam in horizontal position. (G)

Log Splitter Location Cont'd.



Add Hydraulic Oil

1. Make sure the log splitter is on a flat, level surface.
2. Remove the oil plug from the oil tank. (A)
3. Add 18.9 L (5 gal.) of hydraulic oil - 10W AW32, ASLE H-150, or ISO 32 are all acceptable types of fluid.
4. Check the hydraulic oil level using the oil sight glass. Oil level should visibly fill the glass sight. (B)
5. Replace and tighten the oil plug and orient the vent hole away from the operator zone.



⚠ WARNING

DO NOT remove the hydraulic oil fill cap when the engine is running or hot. Hot oil can escape causing severe burns. Always allow the log splitter to cool completely before removing the hydraulic oil cap. High fluid pressure and temperatures are created in the hydraulic log splitters. Hydraulic fluid will escape through a pin-size hole opening and can puncture skin and cause severe blood poisoning. Inspect hydraulic system regularly for possible leaks. Never check for leaks with your hand while the system is pressurized. Seek medical attention immediately if injured by escaping fluid.

🗨 NOTE

When temperature is below 0°C (32°F) use universal tractor/transmission fluid.

ASSEMBLY

Add Hydraulic Oil Cont'd.

6. Start Engine. Extend and retract the wedge to purge air from the hydraulic system. When the wedge motion is smooth, the system is properly purged.
7. Check the hydraulic oil tank sight glass. Add approximately 3.78 L to 5.67 L (1 to 1.5 gallons) of hydraulic oil to bring the level back up to the sight glass.
8. Check oil level daily and add as needed.

Add Engine Oil

! CAUTION

DO NOT attempt to crank or start the engine before it has been properly filled with the recommended type and amount of oil. Damage to the log splitter as a result of failure to follow these instructions will void your warranty.

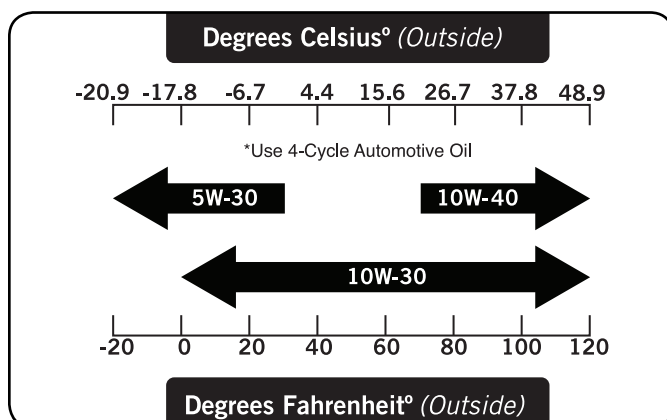
1. Make sure the log splitter is on a flat, level surface.
2. Remove oil fill cap/dipstick to add oil.
3. Add 0.6 L (0.63 qt.) of oil (SAE10W-30) - oil should cover all but 2 threads of filler hole. Replace oil fill cap/dipstick.
4. Check engine oil level daily and add as needed.

CAUTION

The engine is equipped with a low-oil-shutoff and the will stop when the oil level in the crankcase falls below the threshold level.

NOTE

Check oil often during the break-in period. Refer to the Maintenance section for recommended service intervals.



Add Engine Fuel

1. Use clean, fresh, regular unleaded fuel with a minimum octane rating of 85 and an ethanol content of less than 10% by volume.
2. DO NOT mix oil with fuel.
3. Clean the area around the fuel cap.
4. Remove the fuel cap.
5. Slowly add fuel to the tank. DO NOT overfill. Allow approximately 6 mm (¼-in.) of space for fuel expansion.
6. Screw on the fuel cap and wipe away any spilled fuel.

! CAUTION

Use regular unleaded gasoline with a minimum octane rating of 85.

Do not mix oil and gasoline.

Fill tank to approximately 6 mm (¼ in.) below the top of the tank to allow for fuel expansion.

DO NOT pump gas directly into the engine at the gas station. Use an approved container to transfer the fuel to the generator.

DO NOT fill fuel tank indoors.

DO NOT fill fuel tank when the engine is running or hot.

DO NOT overfill the fuel tank.

DO NOT light cigarettes or smoke when filling the fuel tank.

! WARNING

Pouring fuel too fast through the fuel screen may result in blow back of fuel at the operator while filling.

Before Each Use Inspect the Log Splitter

1. Check the hydraulic oil level and visually inspect all hoses, attachments and cylinder for leaks, cracks, fraying or other damage.
2. DO NOT operate the log splitter if there is any indication of damage or oily residue.
3. Inspect the engine and make sure the oil level is correct before operating. If the engine is equipped with a spark arrestor, clean and inspect it regularly (follow spark arrestor maintenance schedule).
4. The tires need to be fully inflated and in good repair. Reference the tire sidewall for recommended tire pressure.

WARNING

DO NOT overinflate tires. Serious injury can result if tires explode.
DO NOT tow the log splitter if the tires are worn or will not hold air.
DO NOT exceed the maximum 72 km/h (45 MPH) towing speed.

Towing Log Splitter Safety

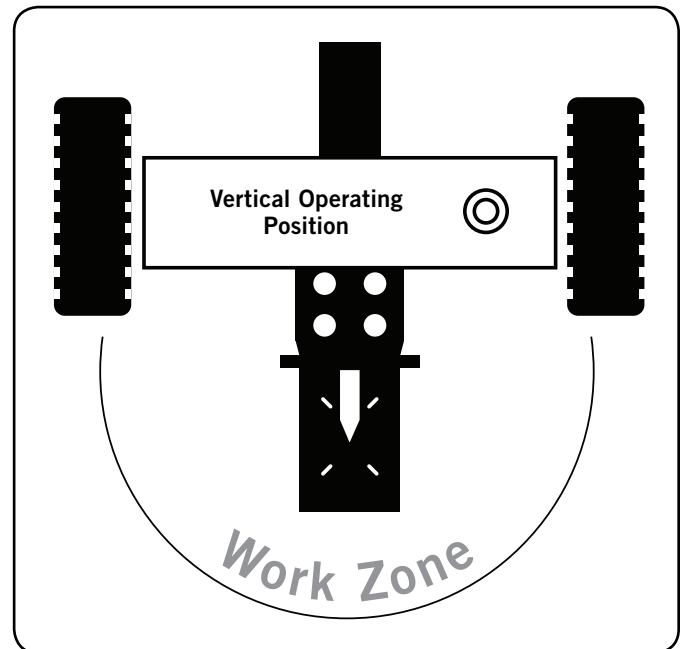
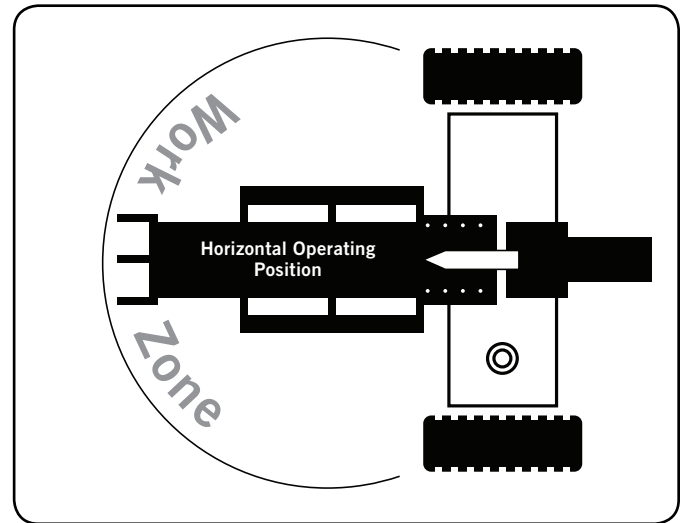
1. Always check local and state regulations regarding the requirements for towing, licensing and lights.
2. Before towing make sure the log splitter is correctly and securely attached to the vehicle and the safety chains attached with enough slack to allow for turning.
3. Never exceed the max. travel speed of 72 km/h (45 MPH). Towing the log splitter at speeds greater than 72 km/h (45 MPH) could result in serious injury or death. Always adjust your towing speed according to the terrain and conditions.
4. Always disconnect the log splitter from the towing vehicle before operating.

Log Splitter Location

This log splitter must have at least 2.1 m (7 ft.) of clearance from combustible material. Leave at least 91.4 cm (3 ft.) of clearance on all sides of the log splitter to allow for adequate cooling, maintenance and servicing. DO NOT place the log splitter near vents or intakes where engine exhaust fumes could be drawn into occupied or confined spaces. **Always operate the log splitter outdoors.** The log splitter needs to be on a dry, level surface with good footing. DO NOT work on mud, ice, tall grass, brush or snow.

Only operate log splitter from work zone shown below.

Log Splitter Location Cont'd.



NOTE

For Vertical Operation:

- Remove the beam lock-pin from the beam bracket
- Use handle on cylinder to rotate beam to vertical position
- Insert beam lock-pin in the pivot bracket

OPERATION

Log Splitter Location Cont'd.

WARNING

ALWAYS use the log splitter for its intended use. The log splitter should only be used to split wood logs, length wise with the grain.

NEVER modify, alter or change the log splitter in anyway. Modifications will void the warranty.

NEVER attach a rope, cable or other device to the control lever on the log splitter.

DO NOT modify or change the engine and operating speeds or pressure settings. These changes can cause safety issues.

ONLY operate the log splitter in daylight.

NEVER operate, or let anyone else operate, the log splitter while under the influence of alcohol, drugs, or medication.

NEVER leave the log splitter unattended while the engine is running.

DO NOT change the splitting position with the engine running. Contact with the muffler can cause serious burns.

Always make sure the beam is in the locked position.

DO NOT let the beam drop as it could crush fingers or cause damage to the log splitter.

Starting the Engine

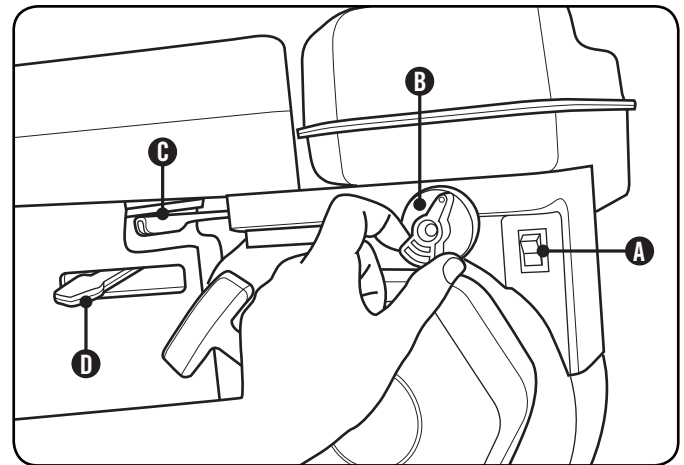
1. Make certain the log splitter is on a flat, level surface.
2. Flip engine switch to "ON" position (Item A).
3. Rotate the fuel valve to the "ON" position (Item B).
4. Move the throttle lever (Item C) to the "Fast" position.
5. Move the choke lever (Item D) to the "Choke" position.
6. Pull the starter cord slowly until resistance is felt and then pull rapidly. **SEE NOTE BELOW.**

NOTE

Keep choke lever in "Choke" position for only 1 pull of the recoil starter. After first pull, move choke lever to the "Run" position for up to the next 3 pulls of the recoil starter. Too much choke leads to spark plug fouling/engine flooding due to the lack of incoming air. This will cause the engine not to start.

7. As engine warms up, move the choke lever (Item D) to "Run."

Starting the Engine Cont'd.



NOTE

If the engine starts, but does not run, make certain that the log splitter is on a flat, level surface. The engine is equipped with a low oil sensor that will prevent the engine from running when the oil level falls below a critical threshold.

The hydraulic oil needs to be above -12°C (10°F) before starting the engine. Cold hydraulic oil can damage the hydraulic pump.

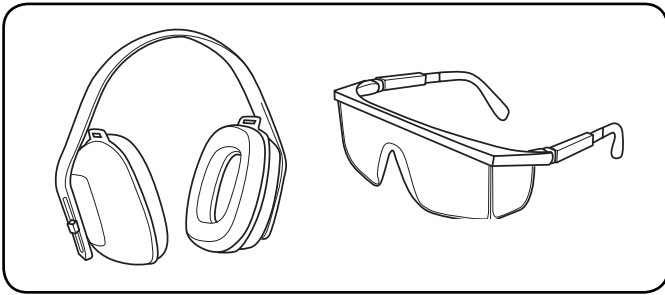
If outdoor air temperature is below 0°C (32°F) allow the log splitter to warm up by extending and returning the wedge several times before splitting wood.

Stopping the Engine

1. Turn the ignition switch to the "Off" position.
2. Turn the fuel knob to the "Off" position.

Log Splitter Operation

1. ALWAYS wear ear and eye protection, protective clothing and safety gear.



2. Block tires and put both support legs in the DOWN position to prevent unintended movement of the log splitter during operation.
3. Set log splitter in either the horizontal or vertical position.

NOTE

HORIZONTAL position is used for lighter logs that can easily be loaded onto the beam.
 VERTICAL position is used for light logs as well as heavy logs that are difficult to load onto the beam.
 Back injury can result from lifting logs onto the log splitter if proper lifting techniques are not used.

4. Load a log onto the beam against the end plate (MAX LOG LENGTH – 60.3 cm {23.75-in.}).
5. Make sure all limbs are clear of crush zones.
6. Push the control valve handle forward (towards the end plate) to split the log.
7. Push the auto control valve handle backward to return the wedge to its original position.
8. Clear the split wood from the work zone.

CAUTION

Do not hold auto control valve in return position. It will damage the stop block or beam.

NOTE

It is normal for the hydraulic fluid to become foamy or frothy during operation.

Log Splitter Operation Cont'd.

NOTE

If a log gets stuck, embedded or will not split completely, push the control handle in the reverse direction and allow the splitter to strip the log from the wedge.
 ALWAYS keep hands clear of the log and wedge while it is retracting.

NOTE

The cylinder stroke is designed so the wedge stops approximately 3.81 cm (1.5 in.) from the end plate.

MAINTENANCE AND STORAGE

The owner/operator is responsible for all periodic maintenance.

WARNING

Never operate a damaged or defective log splitter.

WARNING

Improper maintenance will void your warranty.

NOTE

For service or parts assistance, contact our help line at **1-877-338-0999**.

Complete all scheduled maintenance in a timely manner. Correct any issue before operating the log splitter.

Engine Maintenance

To prevent accidental starting, remove and ground spark plug wire before performing any service.

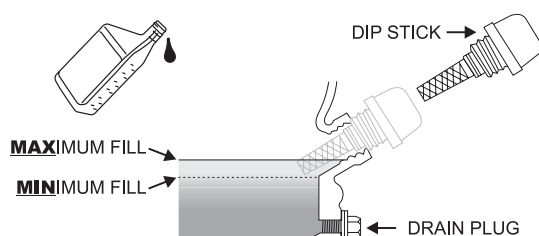
Oil

Change oil when the engine is warm. Refer to the oil specification to select the proper grade of oil for your operating environment.

1. Remove the oil drain plug with a 12 mm socket and extension.
2. Allow the oil to drain completely.
3. Replace the drain plug.
4. Remove oil fill cap/dipstick to add oil.
5. Add 0.6 L (0.63 qt) of oil and replace oil fill cap/dipstick.
6. Dispose of used oil at an approved waste management facility.

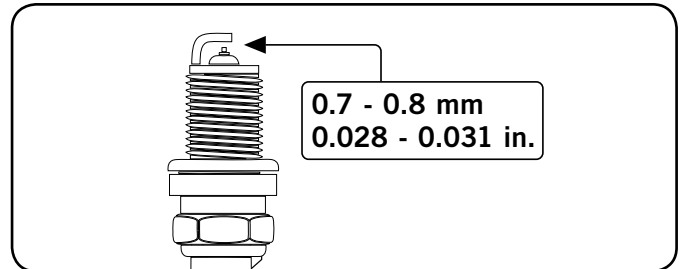
NOTE

Once oil has been added, a visual check should show oil about 1-2 threads from running out of the fill hole. If using the dipstick to check oil level, **DO NOT** screw in the dipstick while checking.



Spark Plugs

1. Remove the spark plug cable from the spark plug.
2. Inspect the electrode on the plug. It must be clean and not worn to produce the spark required for ignition.
3. Make certain the spark plug gap is 0.7 - 0.8 mm (0.028 - 0.031 in.).



4. Refer to the spark plug recommendation chart when replacing the plug.
5. Carefully thread the plug into the engine.
6. Use the spark plug tool to firmly install the plug.
7. Attach the spark plug wire to the plug.

Air Filter

1. Remove the snap-on cover holding the air filter to the assembly.
2. Remove the foam element.
3. Wash in liquid detergent and water. Squeeze thoroughly dry in a clean cloth.
4. Saturate in clean engine oil.
5. Squeeze in a clean, absorbent cloth to remove all excess oil.
6. Place the filter in the assembly.
7. Reattach the air filter cover and snap in place.

Log Splitter Maintenance

Make certain that the log splitter is kept clean and stored properly. Only operate the unit on a flat, level surface in a clean, dry operating environment. **DO NOT** expose the unit to extreme conditions, excessive dust, dirt, moisture or corrosive vapours.

Inspect all air vents and cooling slots to ensure that they are clean and unobstructed.

Check and tighten all bolts and nuts before operating the log splitter.

Be sure to confirm all hose connections and hose clamps are tight before each use. It is possible for connections to vibrate loose over time.

Changing the Hydraulic Oil and Oil Filter

NOTE

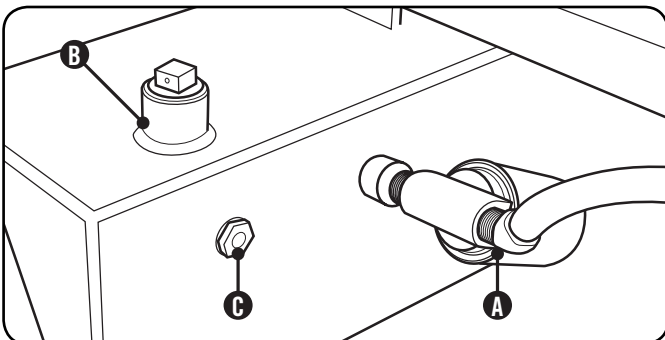
Install a new hydraulic oil filter each time the hydraulic oil is changed

1. Begin with the cylinder retracted and the engine "OFF."
2. Turn the fuel valve "OFF."
3. Release any stored pressure by moving the valve lever forward and backward several times.
4. Place a container under the hydraulic tank. Make sure it is large enough to hold the contents of the tank.
5. To drain the oil, unscrew and remove the tank drain plug on the bottom of the hydraulic tank.
 - a. Unscrew and remove the hydraulic oil filter.
 - b. Drain any oil in the filter into the container.
6. Allow oil to completely drain from the tank into the container.
7. Install a new hydraulic oil filter. (A)
 - a. Turn the filter counter-clockwise to remove it. A strap wrench may be used.
 - b. Lubricate the gasket of the new filter with a thin film of clean oil.
 - c. Screw the new filter on clockwise. Tighten $\frac{3}{4}$ to 1 turn after the gasket makes contact.
8. Reinsert and screw in the tank drain plug. Tighten, but do not over tighten.

NOTE

The drain plug is sealed with Teflon tape. Add 2-3 wraps of new Teflon tape as needed when replacing the drain plug to prevent oil leak

9. Unscrew and remove the tank fill plug, on top of the tank. Using a funnel add approximately 18.9 L (5 gal.) of hydraulic oil to the tank. Wipe up any spilled oil. (B)



Changing the Hydraulic Oil and Oil Filter Cont'd.

10. Turn the fuel valve on, and start the engine. Purge the air from the system by extending and retracting the wedge several times until the motion is smooth.
11. Check the hydraulic oil level using the sight glass. Add 3.79 to 5.69 L (1 to 1.5 gal.) of hydraulic oil, so the oil level is visible in the sight glass. (C)
12. Dispose of used oil at approved recycling locations.

WARNING

Always shut off the engine, disconnect the spark plug, and relieve system pressure before cleaning, adjusting, or repairing the splitter. Relieve system pressure by moving split control lever back and forth several times

NOTE

Change the hydraulic oil filter after the first 50 hours of use. Then every 100 hours or seasonally.

NOTE

Refer to Specifications for a list of compatible replacement filters or call Champion Power Equipment at 1-877-338-0999 to order a replacement OEM filter.

MAINTENANCE AND STORAGE

Cleaning

⚠ CAUTION

DO NOT use a garden hose to clean the engine or log splitter.

Water can contaminate the fuel system and can enter the engine through the cooling slots and damage the engine.

Clear the debris from the beam, wedge and endplate. Use a damp cloth to clean exterior surfaces of the engine and log splitter.

Use a soft bristle brush to remove excess dirt and oil. Use an air compressor (25 PSI) to clear dirt and small debris. Wipe all metal parts with an oily rag to help prevent rust and corrosion.

Maintenance Schedule

Follow the service intervals indicated in the schedule below. Service your log splitter more frequently when operating in adverse conditions. Contact our help line at **1-877-338-0999** to locate the nearest Champion Power Equipment authorized service dealer for your log splitter or engine maintenance needs.

Every 8 hours or daily	
	Check engine and hydraulic oil levels
	Clean around air intake and muffler
First 5 Hours	
	Change engine oil
Every 50 hours or every season	
	Clean air filter
	Change engine oil if operating under heavy load or in hot environments
Every 100 hours or every season	
	Change engine oil
	Clean/Adjust spark plug
	Check/Adjust valve clearance *
	Clean fuel tank and filter *
	Change hydraulic oil
	Change hydraulic oil filter
Every 3 years	
	Replace fuel line

*To be performed by knowledgeable, experienced owners or Champion Power Equipment certified dealers.

Storage

Refer to the Maintenance section for proper cleaning instructions.

Log Splitter Storage

1. The log splitter needs to be cool for at least 5 minutes before storing.
2. Clean the log splitter before storage according to the Maintenance section.
3. Retract the wedge to protect the rod from corrosion.
4. Wipe the beam and wedge with an oily rag to prevent rust and corrosion.

Engine stored for Less than 30 Days

1. Allow the engine to cool completely before storage.
2. Clean engine according to the Maintenance section.
3. To extend the fuel storage life add fuel stabilizer.
4. Turn the fuel valve to the "Off" position.

Engines Stored for Over 30 Days

1. Run the engine with the fuel valve in the "Off" position until the engine stops.
2. The engine needs to cool completely before storage.
3. Clean engine according to the Maintenance section.
4. Drain all fuel completely from the fuel line and carburetor to prevent gum from forming.
5. Add a fuel stabilizer into the fuel tank.
6. Change the oil.
7. The fuel valve needs to be in the off position.
8. Remove the spark plug and pour about 14 mL (½ oz.) of oil into the cylinder. Crank the engine slowly to distribute the oil and lubricate the cylinder.
9. Reattach the spark plug.

⚠ WARNING

Never store the log splitter inside next to appliances where there is a source of heat or open flame, spark or pilot light because they can ignite gasoline vapours.

DO NOT store a log splitter near fertilizer or any corrosive material.

Even with an empty gas tank, gasoline vapours could ignite.

Log Splitter Specifications

- Ram Force 22 Ton
- Max Cycle Time 14 seconds
- Hydraulic Tank Capacity 18.9 L (5 gal.)
- Max Log Length 60.3 cm (23.75-in.)
- Max Log Weight 45 kg (100 lb.)
- Coupler Ball Size 5 cm (2 in.)
- Tire Size 40.6 cm (16 in.)
- Max towing speed 72 km/h (45 MPH)
- Engine 196 cc, OHV, 4 stroke
- Cylinder size . . 10.2 cm x 57.5 cm (4 in. x 22.63 in.)
- Cylinder rod size 4 cm (1.57 in.)
- Hydraulic Fluid Type 10W AW32,
ASLE H-150, ISO 32
- Gear Pump 2-stage
- Max pressure 3500 psi
- Max flow capacity 41.6 LPM (11 GPM)
- Control Valve Detent (auto-return)
- **Overall Dimensions**
- Gross Weight 220 kg (485 lb.)
- Net Weight 180 kg (396.8 lb.)
- Height 116.5 cm (45.87 in.)
- Width 103.5 cm (40.75 in.)
- Length 218 cm (85.83 in.)

Engine Specifications

- Model 66505
- Displacement 196 cc
- Type 4-Stroke OHV
- Start Type Recoil

Spark Plugs

OEM spark plug: NHSP F6RTC

Replacement spark plug: NGK BPR6ES or equivalent
Make certain the spark plug gap is 0.7 - 0.8 mm or (0.028 - 0.031 in.).

Maintenance Valve Clearance

- Intake: 0.13 – 0.17 mm (0.005 – 0.007 in.)
 - Exhaust: 0.18 – 0.22 mm (0.007 – 0.009 in.)
- Note: Tech bulletin regarding the valve adjustment procedure is on www.championpowerequipment.com.

Hydraulic Oil System

Oil capacity is 24.6 L (6.5 gallons).
Use types 10W AW32, ASLE H-150, ISO32 or universal hydraulic fluid.

Replacement filters:

- **Fram PH9342**
- **K&N HP-2008**
- **Wix 51361**

NOTE

When temperature is below 0°C (32°F) use universal tractor/transmission fluid.

Fuel

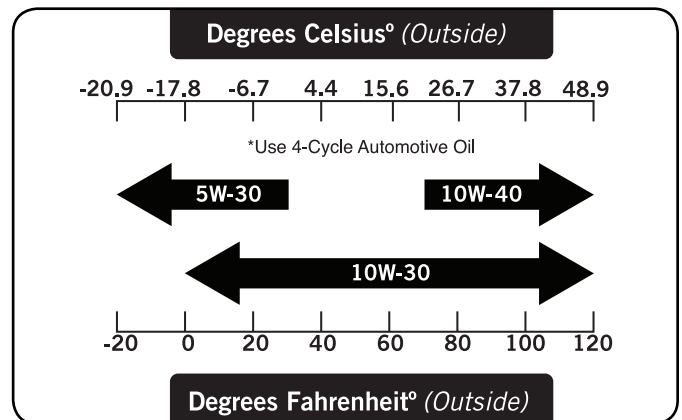
Fuel capacity is 3.4 L (0.90 gallons). Use regular unleaded gasoline with a minimum octane rating of 85 and an ethanol content of less than 10% by volume.

Oil

Use 4-Cycle automotive oil.

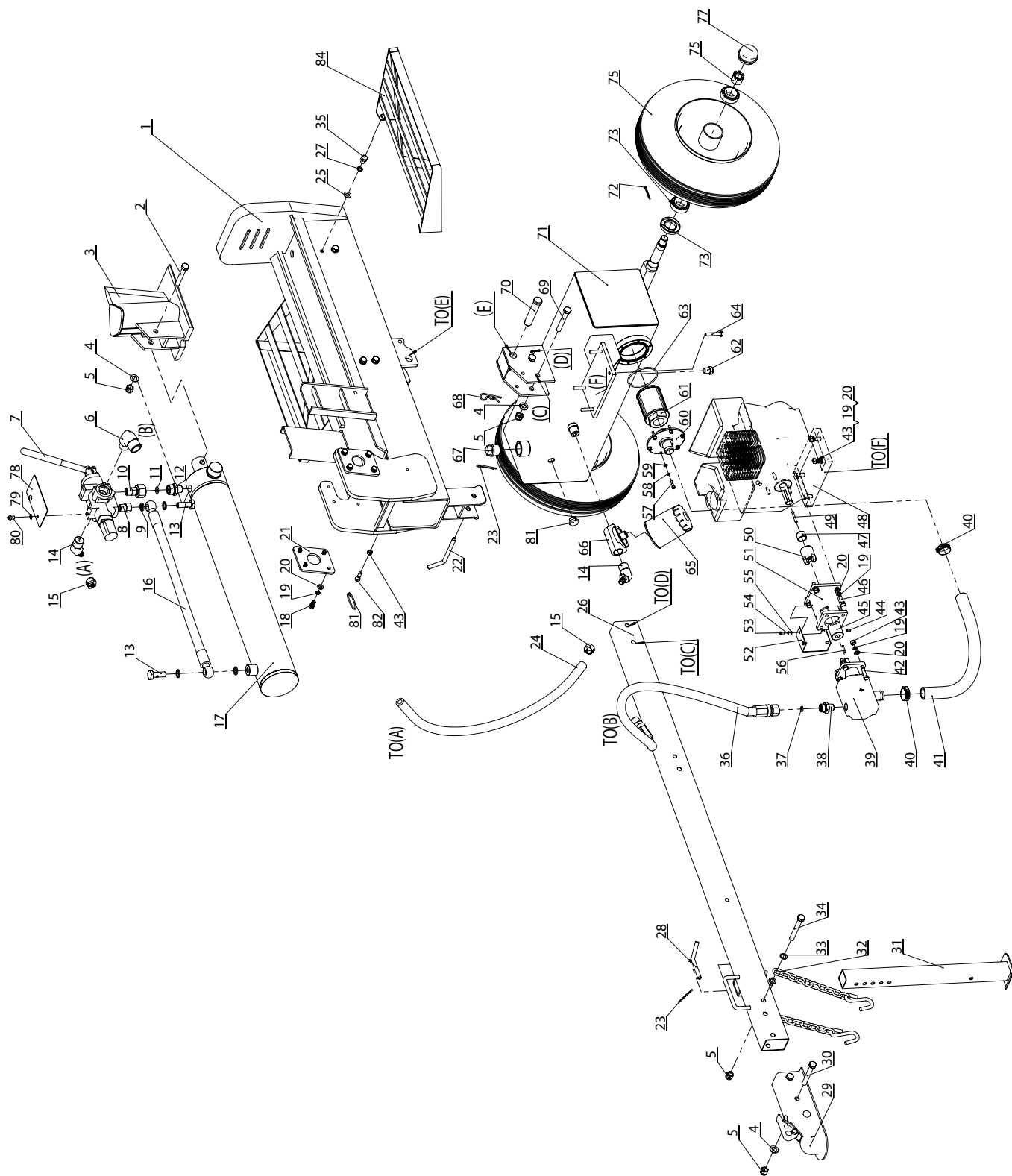
Oil capacity is 0.6 L (0.63 qt).

Please reference the following chart for recommended oil types for use in the log splitter.



SPECIFICATIONS

Parts Diagram

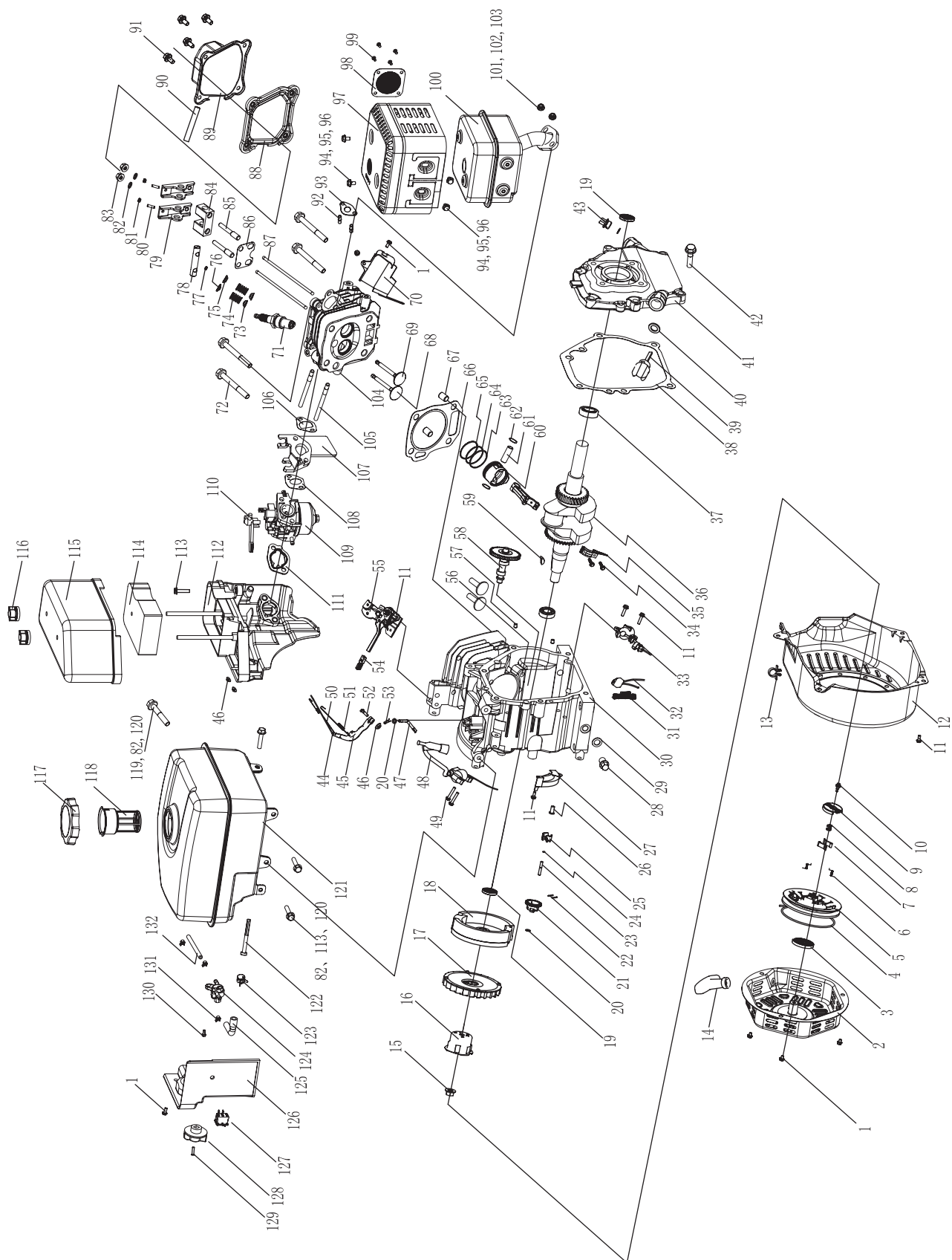


#	Part Number	Description	Qty
1	PMJ22H-02-00	Beam	1
2	GB/T-5782-2000-M12-75	Bolt M12×75(12.9)	1
3	PMJ22J-04-00	Wedge Slide	1
4	GB90-W-12	Washer 12	5
5	GB/T-889.1-2000-M12	Lock Nut M12	6
6	PMJ22G-51	Filter Housing "IN" Connection	1
7	PMJ22J-12	Control Valve	1
8	PMJ22G-24	Valve Joiner	1
9	JB-982-1977-14	Combination Washer 14	4
10	PMJ22G-25	Valve Joiner	1
11	GB/T-3452.1-92-14-2.65	"O" Ring 14×2.65	1
12	PMJ22G-22	Front Cover Connector	1
13	PMJ22G-23	Bolt Connector	2
14	PMJ22G-49	Filter Housing "OUT" Connection	2
15	JB/T-8870-1999-25	Clamp d25	2
16	PMJ22G-16	Hydraulic Hose(Valve-Cylinder)	1
17	PMJ22J-08-00	Cylinder	1
18	GB5781-B8-20	Bolt M8×20	8
19	GB93-LW-8	Lock Washer 8	20
20	GB90-W-8	Washer 8	20
21	PMJ22J-03	Cylinder Fixing Plate	2
22	PMJ22J-15	Pin	1
23	PMJ22G-30	R Pin	2
24	PMJ22G-15	Hydraulic Hose(Valve-Oil Tank)	1
25	GB90-W-10	Washer 10	8
26	PMJ22H-01-00	Tow Bar	1
27	GB93-LW-10	Lock washer 10	8
28	PMJ22J-10	Pin	1
29	PMJ22G-40	2" Coupler	1
30	GB/T-5782-2000-M12-80	Bolt M12×80	2
31	PMJ22J-07-00	Front Support Leg	1
32	PMJ22G-41	Safety Chain With Hook	2
33	GB90-W-12	Washer 12	4
34	GB/T-5782-2000-M12-90	Bolt M12×90	1
35	GB/T-5781-2000-M10-15	Bolt M10×15	8
36	PMJ22J-18	Hydraulic Hose(Valve-Pump)	1
37	GB/T-3452.1-92-10-2.65	"O" Ring 10×2.65	1
38	PMJ22G-21	Outlet Connector Of Pump	1
39	PMJ22J-14	Gear Pump	1
40	JB/T-8870-1999-40	Clamp d40	2
41	PMJ22G-17	Oil Pipe	1
42	GB5781-B8-30	Bolt M8×30	4

#	Part Number	Description	Qty
43	GB41-N-8	Nut M8	9
44	GB1667-S6-10	Screw M6×10	1
45	PMJ22G-26	Gear Pump Connector	1
46	ASME-B18.2.1-1996	Bolt 5/16"-24×1"	4
47	PMJ22G-29	Engine Bushing	1
48	PMJ22G-196CC-G10	Engine	1
49	GB/T-1096-1979	Flat Key	1
50	PMJ22G-28	Engine Connector	1
51	PMJ22G-27	Gear Pump Stand	1
52	PMJ22G-32	Connector Cover	1
53	GB/T-845C-1985	Tapping Screw	4
54	GB93-LW-4	Lock Washer 4	4
55	GB90-W-4	Washer 4	4
56	GB/T-1096-1979	Flat Key	1
57	GB1667-S5-20	Screw M5×20	6
58	GB93-LW-5	Lock Washer 5	6
59	GB90-W-5	Washer 5	6
60	PMJ22G-07-00	Filter Fix Plate	1
61	PMJ22G-44	Filter	1
62	PMJ22G-19	Oil Plug	1
63	GB/T-3452.1-92-80-3.55	"O" Ring 80×3.55	1
64	GB/T-5782-2000-M8-45	Bolt M8×45	4
65	PMJ22G-52	Auto Filter	1
66	PMJ22G-50	Auto Filter Base	1
67	PMJ22G-18	Screw NPT1"	1
68	GJY12-3	R Pin	1
69	GB/T-5782-2000-M12-85	Bolt M12×85	2
70	PMJ22G-12	Hinge Pin	1
71	PMJ22H-11-00	Oil Tank	1
72	GB/T-91-2000-CP4-32	Cotter Pin 4×32	2
73	PMJ22J-05-01	Cased Seal	2
74	L44634-LYC-DS	Tapered Bearing	4
75	PMJ22J-05-03	Wheel	2
76	GB/T-6181-86-M20-1.5	Slotted Nut M20×1.5	2
77	PMJ22J-05-02	Axle Cap	2
78	PMJ22J-19	Plate	1
79	GB90-W-8	Washer 8	2
80	GB5781-B8-12	Bolt M8×12	2
81	PMJ22G-38	Big Tension Spring	1
82	GB/T-798-1988-M8-28	Swing Bolt M8×28	1
83	GB-1160.2-89	Oil Scale	1
84	PMJ22F-01	Log Catcher	2

SPECIFICATIONS

Engine Parts Diagram



#	Part Number	Description	Qty
1	GB5789-FB6-8	Flange Bolt M6x8	5
2	ST160F-1061100	Recoil Starter Cover	1
3	ST160F-1061005	Recoil Starter Spring	1
4	ST160F-1061009	Recoil Starter Rope	1
5	ST160F-1061001	Recoil Starter Reel	1
6	ST188F-1060006	Return Spring	2
7	ST188F-1060005	Starter Ratchet	2
8	ST188F-1060004	Ratchet Guide Spring	1
9	ST188F-1060003	Ratchet Guide	1
10	ST188F-1060002	Ratchet Guide Bolt	1
11	GB5789-FB6-12	Flange Bolt M6 x 12	11
12	ST168F-1080100-G	Fan Cover	1
13	ST168F-1070008-G	Tube Clip 9.5	1
14	ST160F-1061200	Recoil Starter Knob	1
15	ST160F-1050010	Nut M14	1
16	ST160F-1060001	Start Hub	1
17	ST168F-1080001	Cooling Fan	1
18	ST168F-1120100	Fly wheel	1
19	ST168F-1030100	Oil Seal	2
20	ST160F-1110108	Governor Washer	2
21	ST160F-1110101	Governor Weight Holder	1
22	ST160F-1110102	Governor Weight Pin	2
23	ST160F-1110104	Governor Shaft	1
24	ST160F-1110103	Governor Holder Clip	1
25	ST160F-1110107	Governor Weight	2
26	ST160F-1110105	Governor Cover	1
27	ST168F-1080200	Air Guide	1
28	ST160F-1030003	Bolt, Drain	2
29	ST160F-1030004	Washer, Drain	2
30	ST168F-2-1030012-G	Crankcase	1
31	168.120700.00	Wire Tie	1
32	ST160F-1126000	Diode Assembly	1
33	ST160F-1127000	Oil Level Switch	1
34	GB5789-FB7-35	Flange Bolt M7x35	2
35	ST168F-1050100	Connecting Rod Assembly	1
36	ST168F-2-1050001S	Crankshaft	1
37	GB/T276-94	Tapered Bearing	2
38	ST168F-1030008-G	Case Cover Packing	1
39	ST160F-1030001-B	Oil Filler Cap	1
40	ST160F-1030002	Oil Filler Cap Packing	2
41	ST168F-1030007-G	Crankcase Cover	1
42	GB5789-FB8-32	Flange Bolt M8x32	6
43	ST160F-1030005-B	Oil Filler Cap	1
44	ST168F-1110005	Throttle Return Spring	1
45	ST160F-1110003	Governor Arm	1
46	GB41-N-6	Nut M6	3
47	ST160F-1110001	Governor Arm Shaft	1
48	ST160F-1123000-G	Ignition Coil	1
49	GB5789-FB6-25	Flange Bolt M6x25	2
50	ST168F-1110006	Governor Rod	1
51	ST168F-1110007	Governor Spring	1
52	ST160F-1110004	Governor Arm Bolt	1
53	ST160F-1110008	Lock Pin	1
54	168.111008.01	Handle Bar Grip	1
55	168.111000.30	Control Assembly	1
56	ST168F-2-1040013	Valve Lifter	2
57	ST168F-1030015-G	Dowel Pin 9x14	2
58	ST168F-2-1041000	Camshaft Assembly	1
59	GB1099-79	Key 4x7.5x19	1
60	ST168F-2-1050005	Piston	1
61	ST168F-1050003	Piston Pin	1
62	ST168F-1050004	Piston Pin Clip	2
63	ST168F-1050200	Oil Ring Set	1
64	ST168F-1050006	Second Ring Set	1
65	ST168F-1050007	First Piston Ring, Chrome	1
66	ST168F-2-1030009-G	Cylinder Head Gasket	1
67	152FMD-1001007	Dowel Pin 10x16	2

#	Part Number	Description	Qty
68	ST168F-1040002	Intake Valve	1
69	ST168F-1040006	Exhaust Valve	1
70	ST168F-1080002-G	Shroud	1
71	F6RTC	Spark Plug	1
72	GB5789-FB8-55	Flange Bolt M8x55	4
73	ST168F-1040014-A	Oil Seal, Valve	2
74	ST160F-1040003	Valve Spring	2
75	ST160F-1040007	Exhaust Valve Spring Retainer	1
76	ST160F-1040001	Intake Valve Spring Retainer	1
77	ST160F-1040008	Rotator, Exhaust Valve	1
78	168.040202.34	Shaft, Rocker Arm	1
79	ST160F-1040022	Intake Rocker	2
80	ST160F-1040024	Rocker Arm Bolt	2
81	ST168F-1040025	Lock Nut	2
82	GB90-W-6	Washer 6	6
83	GB41-N-6	Nut M6	2
84	168.040201.34	Valve Rocker Arm	1
85	ST168F-1040027	Pivot Bolt	2
86	168.040004.34	Guide, Push Rod	1
87	ST168F-1040005	Push Rod	2
88	ST160F-1020002	Head Cover Gasket	1
89	ST168F-1020100-C	Cylinder Head Cover	1
90	ST160F-1020001	Breather tube	1
91	GB5789-FB6-15	Flange Bolt M6x15	4
92	ST160F-1010002	Exhaust Stud	2
93	ST168F-1100200-G	Muffler Gasket	1
94	GB1667-S5-8	Screw M5x8	4
95	GB90-W-5	Washer 5	4
96	GB93-LW-5	Lock Washer ø5	4
97	168.101200.34	Muffler Protector	1
98	188.101300.34	Spark Arrester	1
99	GB1667-S4-6	Screw M4x6	4
100	168.101100.34	Muffler	1
101	GB41-N-8	Nut M8	2
102	GB90-W-8	Washer 8	2
103	GB93-LW-8	Lock Washer ø8	2
104	ST168F-2-1010100-G	Cylinder Head	1
105	ST160F-1010001	Stud Bolt M6x113	2
106	ST160F-1130002-CPE	Insulator Packing	1
107	ST168F-1130001	Insulator, Carburetor	1
108	ST160F-1130003-CPE	Carburetor Packing	1
109	ST168F-2-1131000-G	Carburetor	1
110	ST160F-1130100	Choke Lever	1
111	ST160F-1130004	Carburetor Washer	1
112	168.091100.34	Base, Air Cleaner	1
113	GB5789-FB6-20	Flange Bolt M6x20	4
114	168.091003.34	Element, Air Cleaner	1
115	168.091200.34	Cover, Air Cleaner	1
116	ST168F-1090100-C	Air Cleaner Cover Nut	2
117	ST160F-1070100H	Fuel Tank Cap	1
118	ST160F-1070006	Fuel Filter, Fuel Tank	1
119	GB5789-FB6-29	Flange Bolt M6x29	1
120	GB93-LW-6	Lock Washer ø6	4
121	168.071000.35	Fuel Tank	1
122	ST152FD-1070200	Fuel Filter	1
123	ST1P68F-1070006-F	Clip ø10.5	1
124	ST168F-1070200-G	Fuel Valve	1
125	ST168F-1070005-G	Tube, II	1
126	168.070010.34	Shroud, Fuel Tank	1
127	21.001000.00	Switch	1
128	ST168F-1070003-G	Fuel Valve Knob	1
129	GB818-88-B4-12	Bolt M4x12	1
130	GB5789-FB5-12	Flange Bolt M5x12	1
131	ST188FD-1070006A	Clip ø8	3
132	ST168F-1070004-G	Tube, I	1

TROUBLESHOOTING

Problem	Cause	Solution
Engine will not start.	No fuel.	Add fuel.
	Faulty spark plug.	Replace spark plug.
	Unit loaded during startup.	Remove load from unit.
Engine will not start; Engine starts but runs roughly.	Low oil level.	Fill crankcase to the proper level. Place log splitter on a flat, level surface.
	Choke in the wrong position.	Adjust choke
	Spark plug wire loose.	Attach wire to spark plug
Engine shuts down during operation.	Out of fuel.	Fill fuel tank
	Low oil level.	Fill crankcase to the proper level. Place log splitter on a flat, level surface
Engine cannot supply enough power or overheating.	Insufficient ventilation.	Check for air restriction. Move to a well ventilated area
Wedge movement is slow or erratic.	Air in the hydraulic oil system.	Purge air by extending and retracting the wedge several times until motion is smooth.
	Debris lodged in beam guides.	Clear debris from beam.
	Low hydraulic oil.	Check oil level and add as needed.
Oil leak from hose connection.	Loose hose clamp or hydraulic fitting.	Tighten hose clamp or hydraulic fitting.
Oil leak from cylinder.	Faulty cylinder rod seal.	Contact Customer Service.
	Scored or bent cylinder rod.	Contact Customer Service.
	Loose hydraulic fitting.	Tighten hydraulic fitting.
	Faulty combination washer seal on cylinder hydraulic fitting.	Contact Customer Service.
Wedge will not extend or retract.	Faulty control valve.	Contact Customer Service.
	Faulty hydraulic pump.	Contact Customer Service.
	Low hydraulic oil.	Check oil level and add as needed.
Wedge does not Auto-Return.	Low hydraulic oil.	Check oil level and add as needed.
	Faulty control valve.	Contact Customer Service.
Excessive bouncing while towing.	Under-inflated tires.	Inflate tires to proper pressure. Refer to tire sidewall.

For further technical support:

Technical Service

Mon – Fri 8:30 AM – 5:00 PM (PST/PDT)

Toll Free: 1-877-338-0999

tech@championpowerequipment.com

WARRANTY

CHAMPION POWER EQUIPMENT
1-YEAR LIMITED WARRANTY

Warranty Qualifications

Champion Power Equipment (CPE) will register this warranty upon receipt of your Warranty Registration Card and a copy of your sales receipt from one of CPE's retail locations as proof of purchase.

Please submit your warranty registration and your proof of purchase within ten (10) days of the date of purchase.

Repair/Replacement Warranty

CPE warrants to the original purchaser that the mechanical and electrical components will be free of defects in material and workmanship for a period of one (1) year from the original date of purchase (90 days for commercial and industrial use). Transportation charges on product submitted for repair or replacement under this warranty are the sole responsibility of the purchaser. This warranty only applies to the original purchaser and is not transferable.

Do Not Return The Unit To The Place Of Purchase

Contact CPE's Technical Service and CPE will troubleshoot any issue via phone or e-mail. If the problem is not corrected by this method, CPE will, at its option, authorize evaluation, repair or replacement of the defective part or component at a CPE Service Centre. CPE will provide you with a case number for warranty service. Please keep it for future reference. Repairs or replacements without prior authorization, or at an unauthorized repair facility, will not be covered by this warranty.

Warranty Exclusions

This warranty does not cover the following repairs and equipment:

Normal Wear

Log Splitter needs periodic parts and service to perform well. This warranty does not cover repair when normal use has exhausted the life of a part or the equipment as a whole.

Installation, Use and Maintenance

This warranty will not apply to parts and/or labour if this log splitter is deemed to have been misused, neglected, involved in an accident, abused, loaded beyond its limits, modified, and installed improperly. Normal maintenance such as spark plugs, air filters, adjustments, fuel system cleaning and obstruction due to buildup is not covered by this warranty.

Other Exclusions

This warranty excludes:

- Cosmetic defects such as paint, decals, etc.
- Wear items such as filter elements, o-rings, etc.
- Accessory parts such as starting batteries, and storage covers.
- Failures to due acts of God and other force majeure events beyond the manufacturer's control.
- Problems caused by parts that are not original Champion Power Equipment parts.

Limits of Implied Warranty and Consequential Damage

Champion Power Equipment disclaims any obligation to cover any loss of time, use of this product, freight, or any incidental or consequential claim by anyone from using this log splitter. THIS WARRANTY IS IN LIEU OF ALL OTHER WARRANTIES, EXPRESS OR IMPLIED, INCLUDING WARRANTIES OF MERCHANTABILITY OR FITNESS FOR A PARTICULAR PURPOSE.

A unit provided as an exchange will be subject to the warranty of the original unit. The length of the warranty governing the exchanged unit will remain calculated by reference to the purchase date of the original unit.

This warranty gives you certain legal rights which may change from state to state or province to province. Your state or province may also have other rights you may be entitled to that are not listed within this warranty.

Contact Information**Address**

Champion Power Equipment, Inc.
Customer Service
10006 Santa Fe Springs Rd.
Santa Fe Springs, CA 90670
www.championpowerequipment.com

Customer Service

Mon – Fri 8:30 AM – 5:00 PM (PST/PDT)
Toll Free: 1-877-338-0999
Fax no.: 1-562-236-9429

Technical Service

Mon – Fri 8:30 AM – 5:00 PM (PST/PDT)
Toll Free: 1-877-338-0999
tech@championpowerequipment.com