

CHAMPION

POWER EQUIPMENT™

10006 Santa Fe Springs Road
Santa Fe Springs, CA 90670 USA
Made in China

90039
Rev 90039-20080729



Owner's Manual and Operating Instructions



8 TON

LOG SPLITTER

Table of Contents

Introduction	1	Warranty	11
Portable Log Splitter.....	1	Warranty Qualifications	11
Accessories.....	1	Repair/Replacement Warranty	11
This Booklet.....	1	Do not return the unit to the place of	
Manual Conventions	2	purchase.....	11
Safety Rules	3	Warranty Exclusions.....	11
Controls and Features.....	4	Normal Wear	11
Log Splitter	4	Installation, Use and Maintenance.....	11
Assembly	5	Other Exclusions	11
Remove the Log Splitter from the		Limits of Implied Warranty and	
Shipping Carton.....	5	Consequential Damage	11
Attach Hydraulic Pump	5	Contact Information	11
Handles	5	Address.....	11
Attach Base Feet	5	Customer Service	11
Attach Foot Pedal.....	6	Technical Service.....	11
Attach Pull Springs	6	Notes	12
Operation	7		
Location	7		
Log Size	7		
Load the Log	7		
Maintenance	8		
Log Splitter Maintenance	8		
Oil.....	8		
Storage	8		
Parts Diagram.....	9		
Parts List.....	10		

Introduction

Congratulations on your purchase of a Champion Power Equipment log splitter. CPE designs and builds log splitters to strict specifications. With proper use and maintenance, this log splitter will bring years of satisfying service.

Portable Log Splitter

This unit is a manually operated log splitter. It is designed to split wood logs for use as fire wood for a stove or fire place.

Accessories

Champion Power Equipment manufactures and sells accessories designed to help you get the most from your purchase. To find out more please visit our web site at

www.championpowerequipment.com

This Booklet

Every effort has been made to ensure the accuracy and completeness of the information in this manual. We reserve the right to change, alter and/or improve the product and this document at any time without prior notice.

Record the model and serial numbers as well as date and place of purchase for future reference. Have this information available when ordering parts and when making technical or warranty inquiries.

Champion Power Equipment Support
1-877-338-0999
Model Number
90039
Serial Number
Date of Purchase
Purchase Location

Manual Conventions

Manual Conventions

This manual uses the following symbols to help differentiate between different kinds of information. The safety symbol is used with a key word to alert you to potential hazards in operating and owning power equipment.

Follow all safety messages to avoid or reduce the risk of serious injury or death.



DANGER

DANGER indicates an imminently hazardous situation which, if not avoided, *will* result in death or serious injury.



WARNING

WARNING indicates a potentially hazardous situation which, if not avoided, *could* result in death or serious injury.



CAUTION

CAUTION indicates a potentially hazardous situation which, if not avoided, *may* result in minor or moderate injury.

CAUTION

CAUTION used without the safety alert symbol indicates a potentially hazardous situation which, if not avoided, *may* result in property damage.



NOTE

If you have questions regarding your log splitter, we can help. Please call our help line at 1-877-338-0999.

Safety Rules

WARNING

Read this manual thoroughly before operating your log splitter. Failure to follow instructions could result in serious injury or death.

CAUTION

Always wear ANSI approved safety glasses when using this log splitter to avoid injury due to flying wood pieces or splinters.

DANGER

Never place your hands or other body parts on or near the log, wedge, hydraulic ram, or splitter workbench while splitting the log.

WARNING

DO NOT use this log splitter for any other purpose other than splitting logs.

DO NOT use this log splitter beyond its 8 ton capacity.

WARNING

Never leave the log splitter unattended when it is pressurized

WARNING

Keep the area around the log splitter clear of any bystanders to prevent injury from ejected wood pieces.

CAUTION

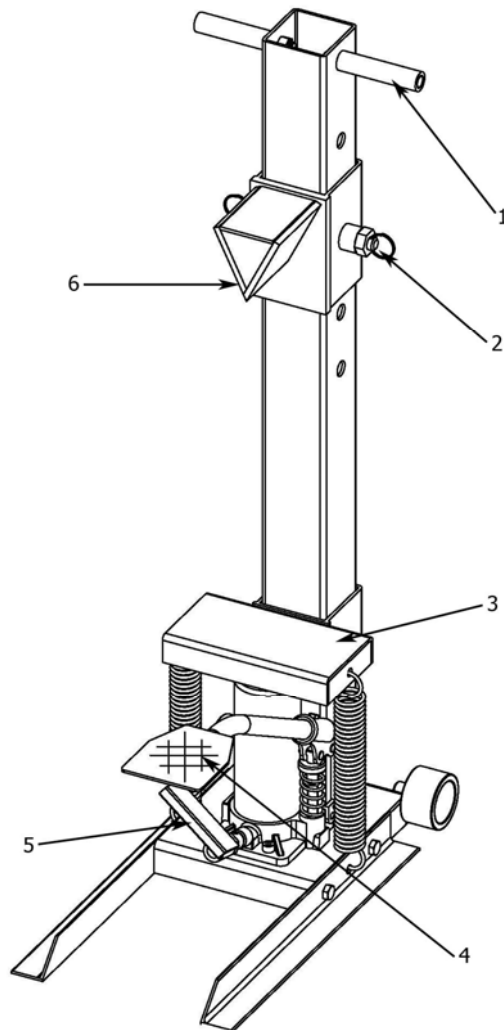
Always clear away wood pieces from the log splitter and area around it before splitting another log.

Controls and Features

Controls and Features

Read this owner's manual before operating your log splitter. Familiarize yourself with the location and function of the controls and features. Save this manual for future reference.

Log Splitter



(1) Handle bars – Hold onto the handle bars to stabilize the log splitter while splitting

(2) Wedge release pins – Pull pins out to adjust wedge height

(3) Workbench – Place log on workbench to split

(4) Foot Pedal – Pump the foot pedal to raise the workbench

(5) Release Pedal – Depress release pedal to lower workbench

(6) Wedge

Assembly

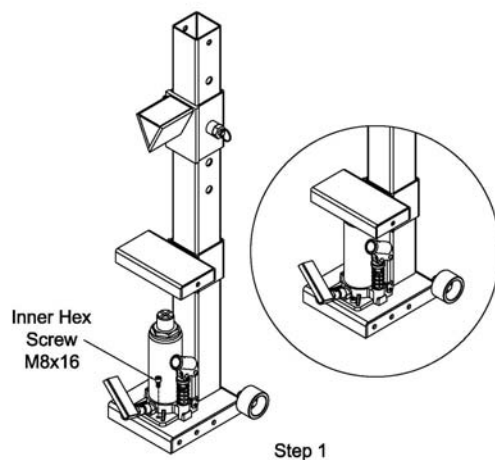
Your log splitter requires some assembly. If you have any questions regarding the assembly of your log splitter, call our help line at 1-877-338-0999. Please have your serial number and model number available.

Remove the Log Splitter from the Shipping Carton

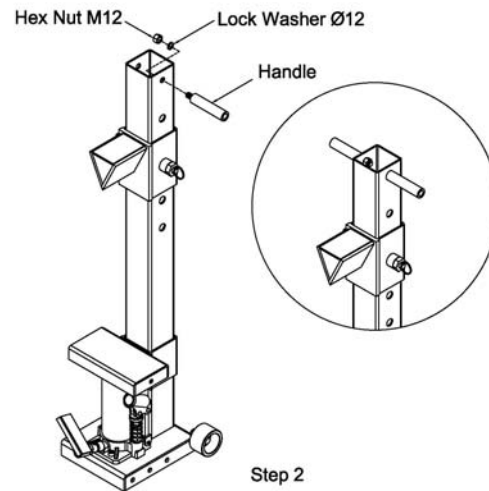
1. Set the shipping carton on a solid, flat surface.
2. Cut the straps and remove the lid of the box.
3. Remove everything from the box before starting to assemble the log splitter.

Attach Hydraulic Pump

1. Attach the hydraulic pump to the base using the 2 M8x16 hex screws provided.

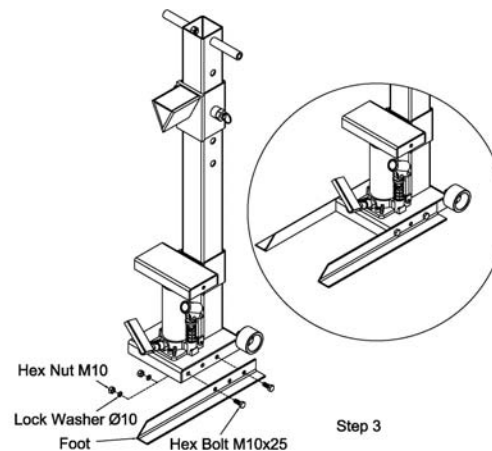


Attach Handles



1. Attach handles to the top of the log splitter as shown above.
2. Secure each handle using the lock washer and M12 nut provided (shown above).
3. Slide the handle grips onto each handle (you may need to use a small amount of liquid soap to moisten the handle grips so they slide on easier).

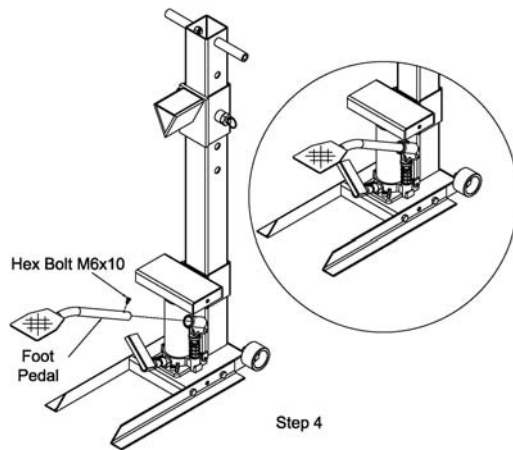
Attach Base Feet



1. Attach the base feet to the bottom of the main post near the hydraulic pump. (shown above)
2. Secure each foot using M10 bolt, lock washer, and nut provided.

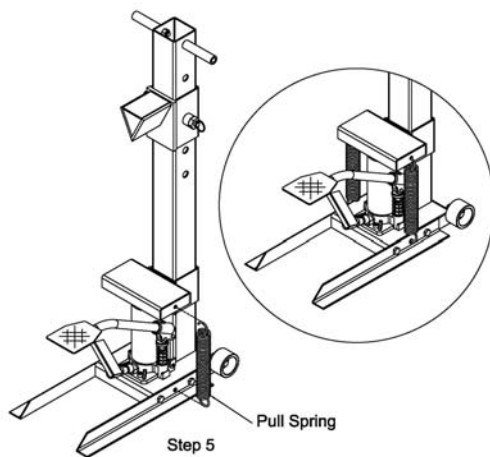
Assembly

Attach Foot Pedal



1. Insert foot pedal into the hydraulic pump slot.
2. Tighten the hex bolt to secure the foot pedal to the hydraulic pump.

Attach Pull Springs



1. Attach each pull spring to the base feet first.
2. Then attach opposite side of spring to the splitter workbench.

Operation

Location

Place the log splitter on firm even ground.

Log Size

Cut the logs for splitting to a length of 23 inches or less.

Load the Log

1. To enable the hydraulic jack ram pump the foot pedal.
2. Place the log securely on the splitter workbench
3. Pull both of the wedge release pins out of the holes in the post, and lower the height to slightly more than the length of the log



NOTE

Make sure the wedge release pins are firmly seated in the post holes before continuing.

4. Keeping the log stable and your hands out of the way of the wedge, use the hydraulic foot pedal to raise the log up tight against the wedge.



5. Keeping your hands away for the log splitter wedge, continue with even strokes of the hydraulic foot pedal until the log is split.
6. Carefully remove the split wood pieces and clear the area of debris
7. To lower the splitter workbench, place your foot on the release pedal located at the base of the hydraulic pump.

Maintenance

Maintenance

The owner/operator is responsible for all periodic maintenance.

WARNING

Never operate a damaged or defective log splitter.

WARNING

Improper maintenance will void your warranty.

Complete all maintenance in a timely manner. Correct any issue before operating the log splitter.

NOTE

For service or parts assistance, contact our help line at 1-877-338-0999.

Log Splitter Maintenance

Wipe down the log splitter to remove tree sap or dirt after each use.

Oil

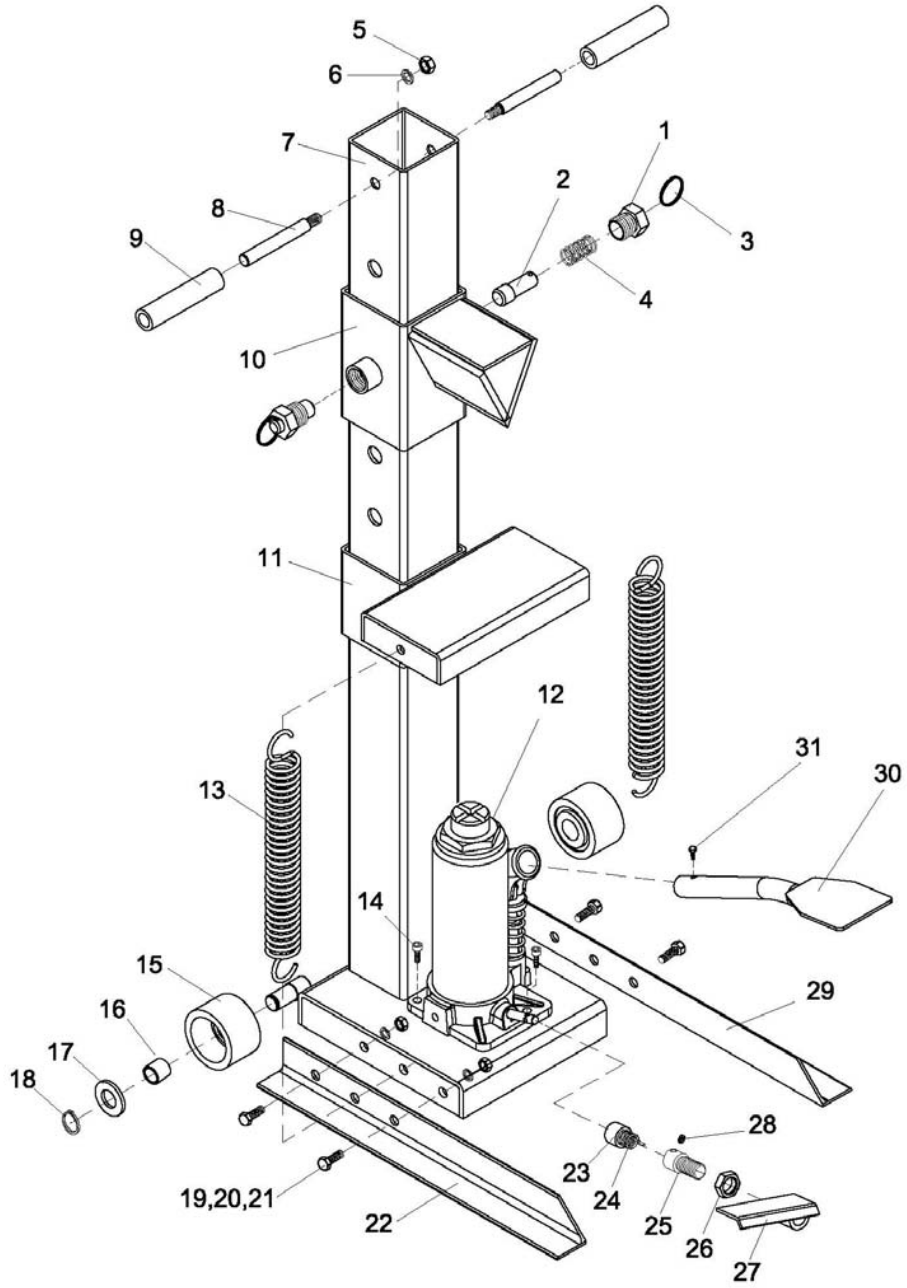
Occasionally, you may need to add hydraulic oil to maximize performance. To add oil to the hydraulic pump follow the instructions below.

1. Remove the pull spring, separate the workbench from hydraulic pump.
2. Use a 6mm hex wrench to remove the two cap screws that hold the hydraulic pump to the base.
3. Position the pump horizontally and remove the round rubber oil plug on the back of the pump housing.
4. Add hydraulic oil until the cylinder is approximately 3/4 full. (oil weight is approximately 0.7kg/1.543lbs)
5. Replace the rubber oil plug and re-assemble the log splitter.
6. Dispose of used oil at an approved waste management facility.

Storage

Store the log splitter in a dry location with pressure released on the hydraulic pump.

Parts Diagram



Specifications

Parts List

No.	Part #	Description	QTY
1	90039-01	Pull Sleeve with thread	2
2	90039-02	Pin	2
3	90039-03	Pull Ring	2
4	90039-04	Wedge Adjustment Pressure Spring	2
5	90039-05	Nut M12	2
6	90039-06	Lock Washer Ø12	2
7	90039-07	Beam	1
8	90039-08	Handle	2
9	90039-09	Handle Cover	2
10	90039-10	Wedge Assembly	1
11	90039-11	Splitter Workbench	1
12	90039-12	Hydraulic Pump	1
13	90039-13	Pull Spring	2
14	90039-14	Hex Screw M8x16	2
15	90039-15	Wheel	2
16	90039-16	Spacer	2
17	90039-17	Flat Washer Ø16	2
18	90039-18	Snap Ring Ø17	2
19	90039-19	Hex Bolt M10x25	4
20	90039-20	Lock Washer Ø10	4
21	90039-21	Hex Nut M10	4
22	90039-22	Base foot (left)	1
23	90039-23	Torsion Spring Cover	1
24	90039-24	Torsion Spring	1
25	90039-25	Release Valve Rod	1
26	90039-26	Nut M16	1
27	90039-27	Release Pedal	1
28	90039-28	Hex screw M6x8	1
29	90039-29	Base foot (right)	1
30	90039-30	Foot Pedal	1
31	90039-31	Hex Bolt M6 x 10	1

Warranty

CHAMPION POWER EQUIPMENT 1 YEAR LIMITED WARRANTY

Effective September 1, 2006. Replaces all undated warranties and all warranties dated before September 1, 2006.

Warranty Qualifications

Champion Power Equipment (CPE) will register this warranty upon receipt of your Warranty Registration Card and a copy of your sales receipt from one of CPE's retail locations as proof of purchase.

Please submit your warranty registration and your proof of purchase within ten (10) days of the date of purchase.

Repair/Replacement Warranty

CPE warrants to the original purchaser that the mechanical and electrical components will be free of defects in material and workmanship for a period of one (1) year from the original date of purchase (90 days for commercial & industrial use). Transportation charges on product submitted for repair or replacement under this warranty are the sole responsibility of the purchaser. This warranty only applies to the original purchaser and is not transferable.

Do not return the unit to the place of purchase

Contact CPE's Technical Service and CPE will troubleshoot any issue via phone or e-mail. If the problem is not corrected by this method, CPE will, at its option, authorize evaluation, repair or replacement of the defective part or component at a CPE Service Center. CPE will provide you with a case number for warranty service. Please keep it for future reference. Repairs or replacements without prior authorization, or at an unauthorized repair facility, will not be covered by this warranty.

Warranty Exclusions

This warranty does not cover the following repairs and equipment:

Normal Wear

Log splitters need periodic parts and service to perform well. This warranty does not cover repair when normal use has exhausted the life of a part or the equipment as a whole.

Installation, Use and Maintenance

This warranty will not apply to parts and/or labor if this log splitter is deemed to have been misused, neglected, involved in an accident, abused, loaded beyond the log splitter's limits, or modified. Normal maintenance such as cleaning and replacing oil is not covered by this warranty.

Other Exclusions

This warranty excludes:

Cosmetic defects such as paint, decals, etc.
Failures to due acts of God and other force majeure events beyond the manufacturer's control.

Problems cause by parts that are not original Champion Power Equipment parts.

Limits of Implied Warranty and Consequential Damage

Champion Power Equipment disclaims any obligation to cover any loss of time, use of this product, freight, or any incidental or consequential claim by anyone from using this generator. THIS WARRANTY IS IN LIEU OF ALL OTHER WARRANTIES, EXPRESS OR IMPLIED, INCLUDING WARRANTIES OF MERCHANTABILITY OR FITNESS FOR A PARTICULAR PURPOSE

A unit provided as an exchange will be subject to the warranty of the original unit. The length of the warranty governing the exchanged unit will remain calculated by reference to the purchase date of the original unit.

This warranty gives you certain legal rights which may change from state to state. Your state may also have other rights you may be entitled to that are not listed within this warranty.

Contact Information

Address

Champion Power Equipment, Inc.
Customer Service
10006 Santa Fe Springs Rd.
Santa Fe Springs, CA 90670

Customer Service

Mon – Fri 8:30 AM – 5:00 PM (PST/PDT)
Toll Free: 1-877-338-0999
Fax no.: 1-562-236-9429

Technical Service

Mon – Fri 8:30 AM – 5:00 PM (PST/PDT)
Toll Free: 1-877-338-0999
tech@championpowerequipment.com

Notes

Notes