

OWNER'S MANUAL & OPERATING INSTRUCTIONS

# CATEGORY 5

POWERED BY CHAMPION

TM



2 INCH

# SEMI-TRASH PUMP

**1 YEAR**  
LIMITED WARRANTY

MODEL NUMBER  
**65528**

**SAVE THESE INSTRUCTIONS**  
Important Safety Instructions  
are included in this manual.

MADE IN CHINA  
REV 65528-20110518

10006 Santa Fe Springs Road  
Santa Fe Springs CA 90670  
USA / 1-877-338-0999  
[www.championpowerequipment.com](http://www.championpowerequipment.com)

**Have questions or need assistance?**

*Do not return this product to the store!*

**WE ARE HERE TO HELP!**

Visit our website:

**[www.championpowerequipment.com](http://www.championpowerequipment.com)**

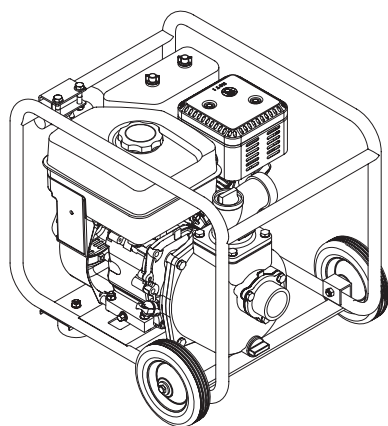
for more info:

- Product Info & Updates
- Tech Bulletins
- Frequently Asked Questions
- Product Registration

– or –

Call our Customer Care Team Toll-Free at:

**1-877-338-0999**



# 2 INCH SEMI-TRASH PUMP

## TABLE OF CONTENTS

<b>Introduction</b> . . . . .	<b>1</b>	<b>Troubleshooting</b> . . . . .	<b>13</b>
Introduction . . . . .	1	<b>Specifications</b> . . . . .	<b>14</b>
Semi-Trash Pump . . . . .	1	Engine Specifications . . . . .	14
Accessories . . . . .	1	Semi-Trash Pump Specifications . . . . .	14
This Booklet . . . . .	1	Fuel . . . . .	14
<b>Manual Conventions</b> . . . . .	<b>2</b>	Oil . . . . .	14
<b>Safety Rules</b> . . . . .	<b>3</b>	Spark Plugs . . . . .	14
<b>Controls and Features</b> . . . . .	<b>5</b>	Valve Clearance . . . . .	14
Semi-Trash Pump . . . . .	5	Parts Diagram . . . . .	15
Parts Included . . . . .	6	Parts List . . . . .	16
Wheel Kit . . . . .	6	Engine Parts Diagram . . . . .	17
Hose Kit . . . . .	6	Engine Parts List . . . . .	18
Other . . . . .	6	<b>Warranty</b> . . . . .	<b>19</b>
<b>Assembly</b> . . . . .	<b>7</b>	Warranty Qualifications . . . . .	19
Remove the Semi-Trash Pump		Repair/Replacement Warranty . . . . .	19
from the Shipping Carton . . . . .	7	Do Not Return The Unit To	
Install the Wheel Kit . . . . .	7	The Place Of Purchase . . . . .	19
Install the Support Leg . . . . .	7	Warranty Exclusions . . . . .	19
Install the Handles . . . . .	7	Normal Wear . . . . .	19
Add Engine Oil . . . . .	8	Installation, Use and Maintenance . . . . .	19
Add Fuel . . . . .	8	Other Exclusions . . . . .	19
<b>Operation</b> . . . . .	<b>9</b>	Limits of Implied Warranty and Consequential	
Semi-Trash Pump Location . . . . .	9	Damage . . . . .	19
Connecting a Hose Kit . . . . .	9	Contact Information . . . . .	19
Starting the Engine . . . . .	10	Address . . . . .	19
Stopping the Engine . . . . .	10	Customer Service . . . . .	19
<b>Maintenance and Storage</b> . . . . .	<b>11</b>	Technical Service . . . . .	19
Engine Maintenance . . . . .	11	Emission Control System Warranty . . . . .	20
Oil . . . . .	11		
Spark Plugs . . . . .	11		
Air Filter . . . . .	11		
Cleaning . . . . .	12		
Adjustments . . . . .	12		
Maintenance Schedule . . . . .	12		
Storage . . . . .	12		
Engine Storage . . . . .	12		
Semi-Trash Pump Storage . . . . .	12		

# INTRODUCTION

## Introduction

Congratulations on your purchase of a Champion Power Equipment semi-trash pump. CPE designs and builds semi-trash pumps to strict specifications. With proper use and maintenance, this semi-trash pump will bring years of satisfying service.

## Semi-Trash Pump

This unit is a gasoline engine driven, impeller based semi-trash pump. It is designed to pump clear water only.

## Accessories

Champion Power Equipment manufactures and sells accessories designed to help you get the most from your purchase. To find out more about our covers, hose kits and other accessories, please visit our web site at:  
→ [www.championpowerequipment.com](http://www.championpowerequipment.com)

## This Booklet

Every effort has been made to ensure the accuracy and completeness of the information in this manual. We reserve the right to change, alter and/or improve the product and this document at any time without prior notice.

Record the model and serial numbers as well as date and place of purchase for future reference. Have this information available when ordering parts and when making technical or warranty inquiries.

Champion Power Equipment Support	
1-877-338-0999	
Model Number	
65528	
Serial Number	
Date of Purchase	
Purchase Location	
For <b>Oil Type</b> see 'Add Engine Oil' section. For <b>Fuel Type</b> see 'Add Fuel' section.	

This manual uses the following symbols to help differentiate between different kinds of information. The safety symbol is used with a key word to alert you to potential hazards in operating and owning power equipment.

Follow all safety messages to avoid or reduce the risk of serious injury or death.

 **DANGER**

DANGER indicates an imminently hazardous situation which, if not avoided, **will** result in death or serious injury.

 **WARNING**

WARNING indicates a potentially hazardous situation which, if not avoided, **could** result in death or serious injury.

 **CAUTION**

CAUTION indicates a potentially hazardous situation which, if not avoided, **may** result in minor or moderate injury.

**CAUTION**

CAUTION used without the safety alert symbol indicates a potentially hazardous situation which, if not avoided, **may** result in property damage.

 **NOTE**

If you have questions regarding your semi-trash pump, we can help. Please call our help line at **1-877-338-0999**

# SAFETY RULES

## WARNING

Read this manual thoroughly before operating your semi-trash pump. Failure to follow instructions could result in serious injury or death.

## DANGER

Semi-trash pump exhaust contains carbon monoxide, a colorless, odorless, poison gas. Breathing carbon monoxide will cause nausea, dizziness, fainting or death. If you start to feel dizzy or weak, get to fresh air immediately.

Pumping volatile liquids may result in an explosion or fire. These liquids will corrode the pump and void your warranty.

## WARNING

The engine exhaust from this product contains chemicals known to the state of California to cause cancer, birth defects, or other reproductive harm.

## DANGER

Engine exhaust contains carbon monoxide, a colorless, odorless, poison gas. Breathing carbon monoxide will cause nausea, dizziness, fainting or death.

Operate semi-trash pump outdoors only in a well ventilated area DO NOT operate the semi-trash pump inside any building, enclosure or compartment.  
DO NOT allow exhaust fumes to enter a confined area through windows, doors, vents or other openings.

## DANGER

Rotating parts can entangle hands, feet, hair, clothing and/or accessories. Traumatic amputation or severe laceration can result.

Keep hands and feet away from rotating parts. Tie up long hair and remove jewelry. Operate equipment with guards in place. DO NOT wear loose-fitting clothing, dangling drawstrings or items that could become caught.

## DANGER

The semi-trash pump develops powerful force.

DO NOT move the semi-trash pump when it is in use. DO NOT use hoses or connectors that are worn, damaged or frayed. DO NOT allow children or unqualified persons to operate or service the semi-trash pump.

## WARNING

DO NOT immerse this unit in water.

## WARNING

Sparks can result in fire or electrical shock.

### When servicing the semi-trash pump:

Disconnect the spark plug wire and place it where it cannot contact the plug. DO NOT check for spark with the plug removed. Use only approved spark plug testers.

**⚠ DANGER**

Fuel and fuel vapors are highly flammable and extremely explosive.  
Fire or explosion can cause severe burns or death. Unintentional startup can result in entanglement, traumatic amputation or laceration.

**When adding or removing fuel:**

Turn the engine off and let it cool for at least two minutes before removing the fuel cap. Loosen the cap slowly to relieve pressure in the tank. Only fill or drain fuel outdoors in a well-ventilated area. DO NOT overfill the fuel tank. Always keep fuel away from sparks, open flames, pilot lights, heat and other sources of ignition. DO NOT light or smoke cigarettes.

**When starting the semi-trash pump:**

DO NOT attempt to start a damaged semi-trash pump. Make certain that the gas cap, air filter, spark plug, fuel lines and exhaust system are properly in place.

Allow spilled fuel to evaporate fully before attempting to start the engine.

Make certain that the semi-trash pump is resting firmly on level ground.

**When operating the semi-trash pump:**

DO NOT move or tip the semi-trash pump during operation. DO NOT tip the semi-trash pump or allow fuel or oil to spill.

**When transporting or servicing the semi-trash pump:**

Make certain that the fuel shutoff valve is in the off position and the fuel tank is empty. Disconnect the spark plug wire.

**When storing the semi-trash pump:**

Store away from sparks, open flames, pilot lights, heat and other sources of ignition.

**⚠ WARNING**

Water pumped through this unit shall not be used as drinking water.

**⚠ WARNING**

DO NOT pump salt, sludge, sewer, sea, or any other type of water containing solid material.

**⚠ WARNING**

Rapid retraction of the starter cord will pull hand and arm towards the engine faster than you can let go. Unintentional startup can result in entanglement, traumatic amputation or laceration. Broken bones, fractures, bruises or sprains could result.

When starting engine, pull the starter cord slowly until resistance is felt and then pull rapidly to avoid kickback.

**⚠ CAUTION**

Exceeding the semi-trash pump's specification for maximum head can damage the semi-trash pump and/or hose kits connected to it.

DO NOT modify the semi-trash pump in any way. DO NOT attempt to exceed the rated flow. Attempting to increase the rated flow may damage the unit and/or shorten its life.

**⚠ CAUTION**

Improper treatment or use of the semi-trash pump can damage it, shorten its life and void your warranty.

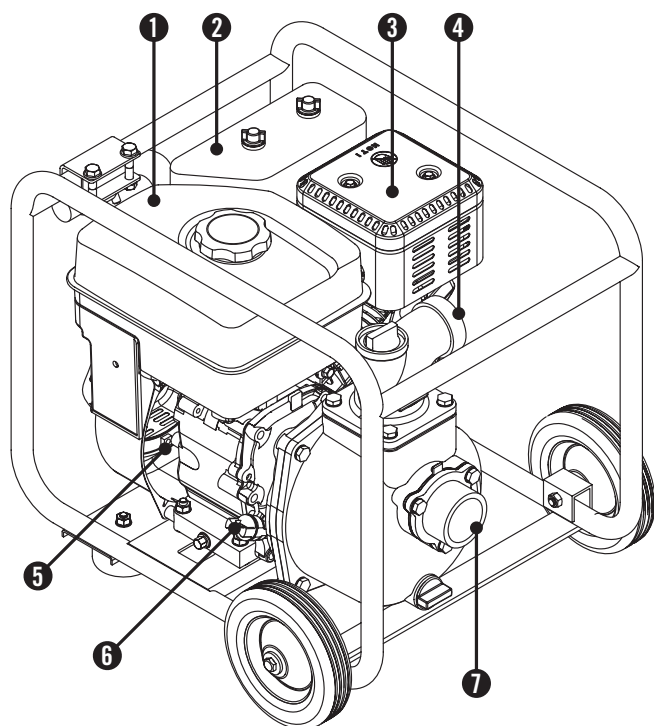
Use the semi-trash pump only for intended uses. Operate only on level surfaces. DO NOT expose semi-trash pump to excessive moisture, dust, or dirt. DO NOT allow any material to block the cooling slots. DO NOT use the semi-trash pump if:

- Equipment sparks, smokes or emits flames
- Equipment vibrates excessively

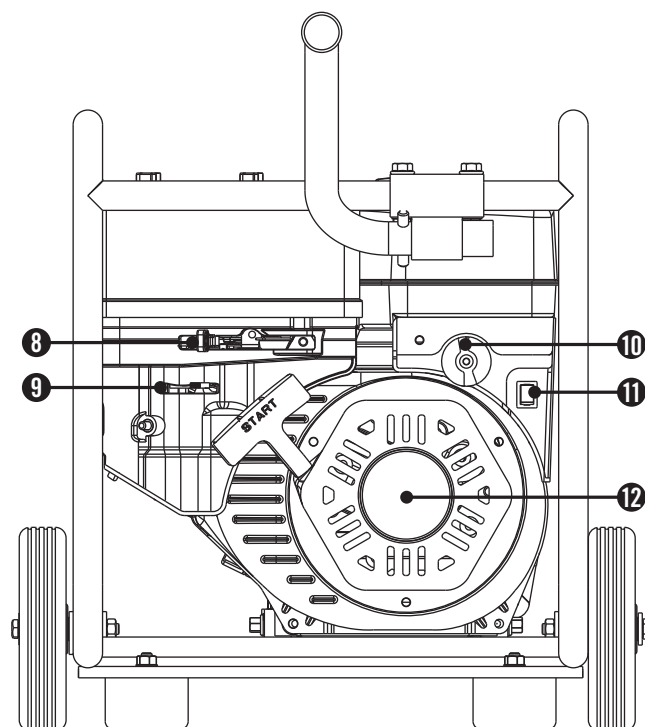
# CONTROLS AND FEATURES

Read this owner's manual before operating your semi-trash pump. Familiarize yourself with the location and function of the controls and features. Save this manual for future reference.

## Semi-Trash Pump



- (1) **Fuel Tank** – 1.06 gallon (4 L) capacity fuel tank.
- (2) **Air Filter** – Protects the engine by filtering dust and debris from the intake air.
- (3) **Muffler**
- (4) **2" Outlet** – 2" NPT outlet connector.
- (5) **Low Oil Sensor** – Senses the level of oil in the crankcase and shuts the engine down if the level falls too low.
- (6) **Oil Filler Cap** – Check and fill engine oil level.
- (7) **2" Inlet** – 2" NPT inlet connector.



- (8) **Throttle** – Used to adjust engine speed.
- (9) **Choke lever**– Used to start the engine.
- (10) **Fuel Valve**
- (11) **Engine Switch** – Used to start the engine.
- (12) **Recoil Starter** – Used to start the engine.



## Parts Included

Your Model 65528 Gasoline Powered semi-trash pump ships with the following parts:

### Wheel Kit

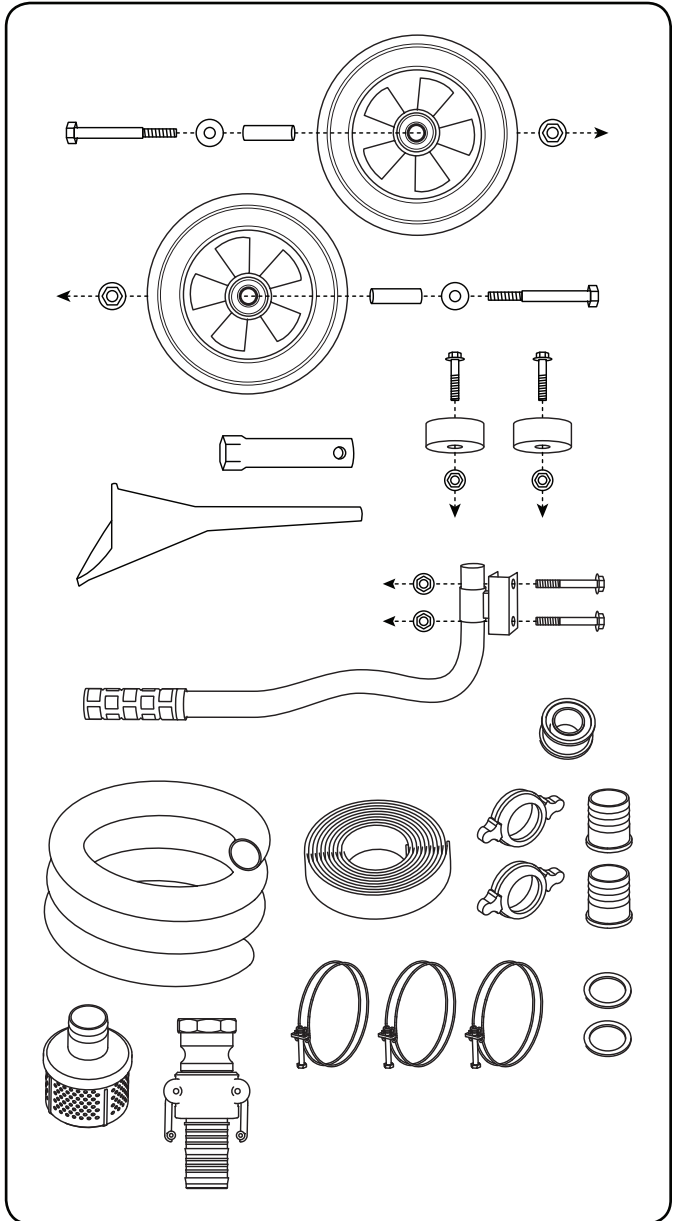
- 6" Wheel . . . . . 2
- Vibration Mounts . . . . . 2
- Bushing . . . . . 2
- Handle . . . . . 1
- Flange Bolt (M8x75 for Wheel) . . . . . 2
- Flange Bolt (M8x45 for Handle) . . . . . 2
- Flange Bolt (M8x25 for Vibration Mounts) . . . . . 2
- Lock Nut (M8) . . . . . 2
- Flat Washer 8 mm . . . . . 2
- Nut (M8) . . . . . 4

### Hose Kit

- 12' Rigid Intake Hose . . . . . 1
- 20' Collapsible Outlet Hose . . . . . 1
- Teflon Tape . . . . . 1
- Clamp . . . . . 3
- Outlet Hose Adapter . . . . . 2
- Gasket (plastic) . . . . . 2
- Outlet Hose Fitting . . . . . 2
- Strainer . . . . . 1
- Cam Lock Coupler . . . . . 1

### Other

- Oil Funnel . . . . . 1
- Spark Plug Socket . . . . . 1



# ASSEMBLY

Your semi-trash pump requires some assembly. This unit ships from our factory without oil. It must be properly serviced with fuel and oil before operation.

If you have any questions regarding the assembly of your semi-trash pump, call our help line at 1-877-338-0999. Please have your serial number and model number available.

## Remove the Semi-Trash Pump from the Shipping Carton

1. Set the shipping carton on a solid, flat surface.
2. Remove everything from the carton except the semi-trash pump.
3. Carefully cut each corner of the box from top to bottom.

## Install the Wheel Kit

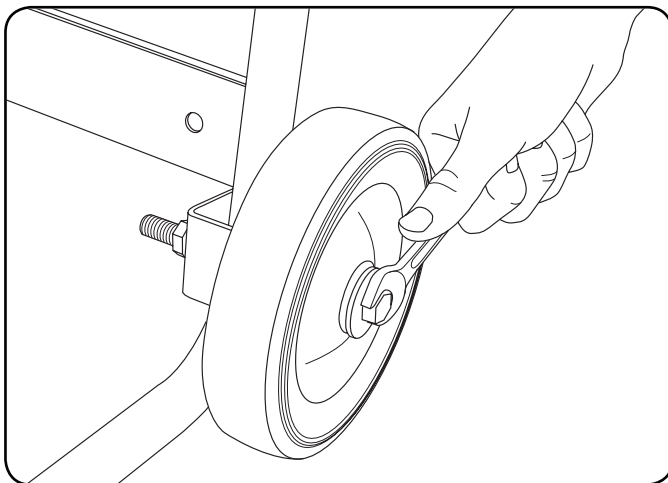
### ⚠ CAUTION

The wheel kit is not intended for over-the-road use.

You will need the following tools to install the wheels:

- 12 mm wrench OR adjustable wrench (not included)
- Socket wrench with a 12 mm socket (not included)

1. Slide the M8x75 wheel bolt through the washer, sleeve and wheel.
2. Slide the bolt through the mount point on the frame.
3. Fasten securely with the M8 nut.
4. Repeat steps 1-3 to attach the second wheel.

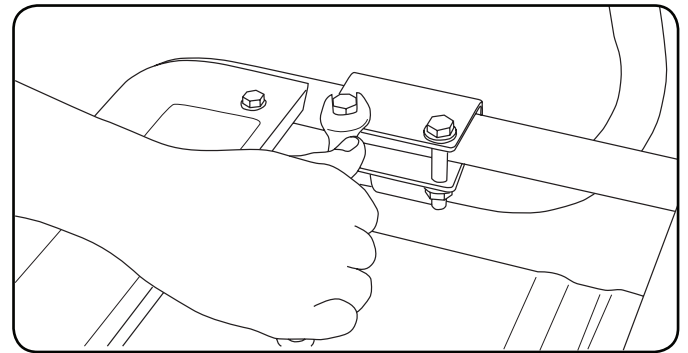


## Install the Vibration Mounts

1. Attach the two rubber vibration mounts to the frame cross member with a cap screw (M8x25) and lock nut (M8).
2. Tip the semi-trash pump slowly so that it rests on the wheels and vibration mounts.

## Install the Handles

1. Line up the holes at the base of the handle with the receiving holes on the semi-trash pump frame.
2. Thread cap screws (M8x45) through the frame and handle.
3. Place a lock nut (M8) on the end of the cap screw and fasten securely. DO NOT over tighten the lock nut.



## Add Engine Oil

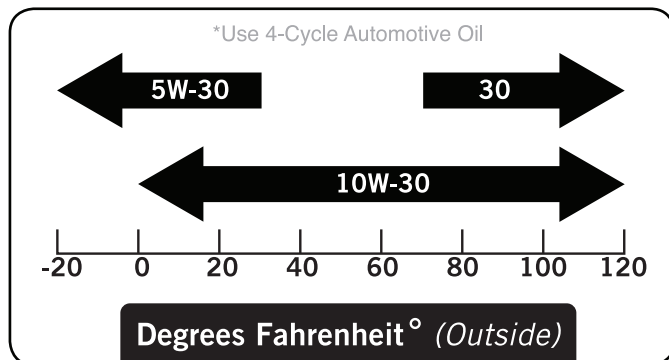
### ! CAUTION

DO NOT attempt to crank or start the engine before it has been properly filled with the recommended type and amount of oil. Damage to the semi-trash pump as a result of failure to follow these instructions will void your warranty.

### NOTE

The recommended oil type is 10W-30 4-cycle automotive oil. Please see "Specifications" section for more information on oil types.

1. Place the semi-trash pump on a flat, level surface.
2. Remove oil fill cap/dipstick to add oil.
3. Add 0.63 qt (0.6 L) of oil (included) and replace oil fill cap/dipstick. See "Specifications" pages for oil recommendations based on operating conditions.
4. Check engine oil level daily and add as needed.



### CAUTION

The engine is equipped with a low-oil-shutoff and will stop when the oil level in the crankcase falls below the threshold level.

### NOTE

Check oil often during the break-in period. Refer to the Maintenance section for recommended service intervals.

## Add Fuel

1. Use clean, fresh, regular unleaded fuel with a minimum octane rating of 85 and an ethanol content of less than 10% by volume.
2. DO NOT mix oil with fuel.
3. Clean the area around the fuel cap.
4. Remove the fuel cap.
5. Slowly add fuel to the tank. DO NOT overfill. Allow approximately ¼ inch of space for fuel expansion.
6. Screw on the fuel cap and wipe away any spilled fuel.

### ! CAUTION

Use regular unleaded gasoline with a minimum octane rating of 85.

Do not mix oil and gasoline.

Fill tank to approximately ¼ inch below the top of the tank to allow for fuel expansion.

DO NOT fill fuel tank indoors.

DO NOT fill fuel tank when the engine is running or hot.

DO NOT overfill the fuel tank.

DO NOT light cigarettes or smoke when filling the fuel tank.

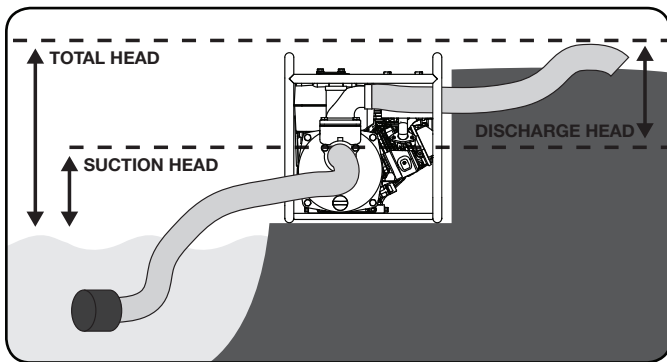
# OPERATION

## Semi-Trash Pump Location

Place the semi-trash pump in a well-ventilated area. DO NOT place the semi-trash pump near vents or intakes where exhaust fumes could be drawn into occupied or confined spaces. Carefully consider wind and air currents when positioning semi-trash pump.

This semi-trash pump must have at least five feet of clearance from combustible material. Leave at least three feet of clearance on all sides of the semi-trash pump to allow for adequate cooling, maintenance and servicing.

Place the pump on a level surface free from any obstructions or potential hazards. The pump should be placed close to the water level to ensure maximum pump performance.



Pump output will be affected by the type, length, and size of the suction and discharge hoses. The pumping height, also known as the total head, is the distance from the water level to the point of discharge. As this distance increases, pump output decreases. The discharge capacity is greater than the suction capacity. Therefore, it is important that the suction head is less than the discharge head.

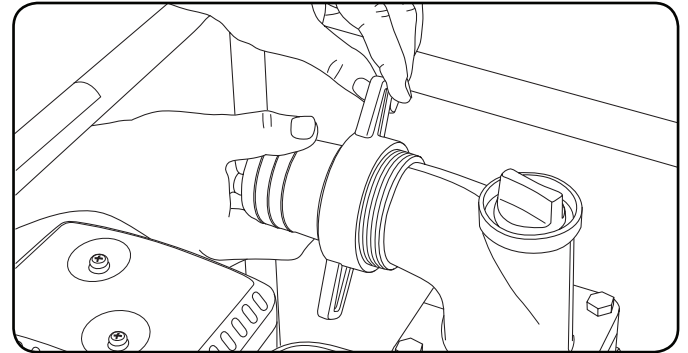
The time required to draw water from the source to the pump (self-priming time) can be decreased by minimizing the suction head.

## Connecting a Hose Kit

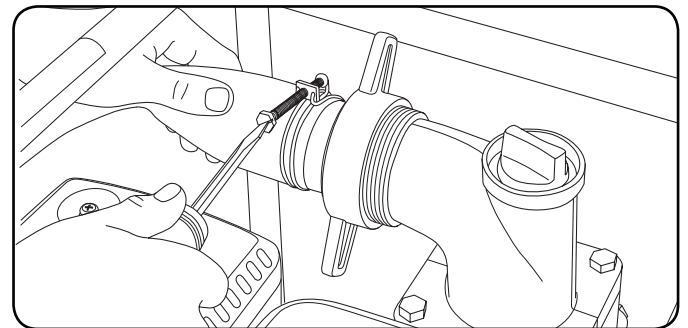
### NOTE

Both the intake and discharge ports are 2 in. NPT. Please insure the connectors to the suction and discharge hose are 2 in. NPT threaded.

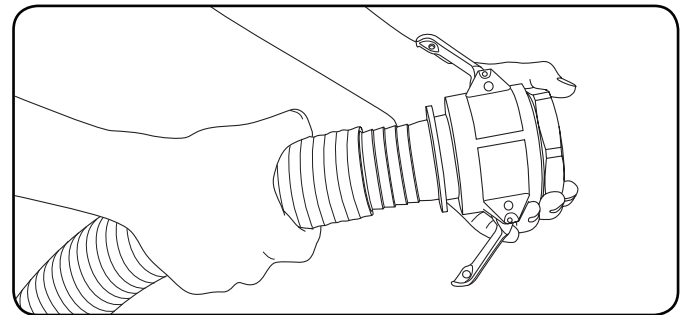
1. Attach and thread the connector to the threaded flange.



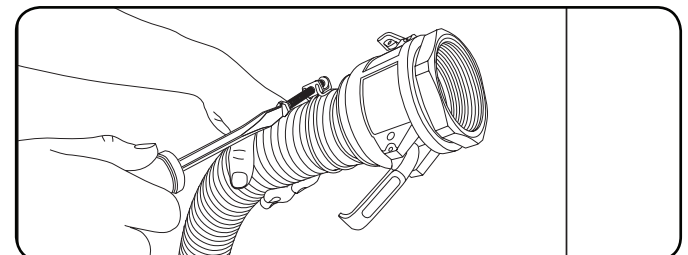
2. Slide the flexible, outlet hose over connector and secure with the hose clamp.



3. Insert quick coupler in the rigid suction hose.

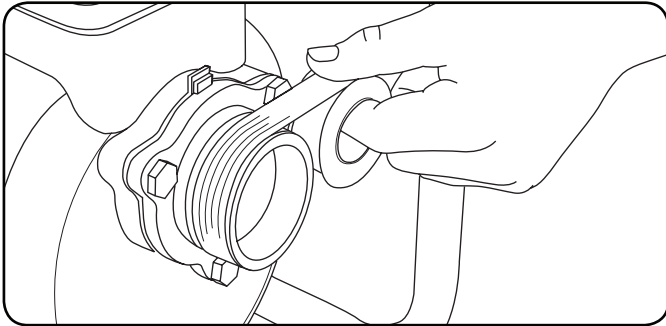


4. Fasten the quick coupler to the suction hose with the hose clamp.

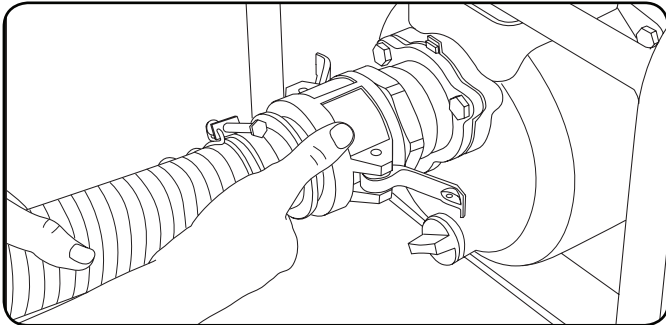


### Connecting a Host Kit Cont'd.

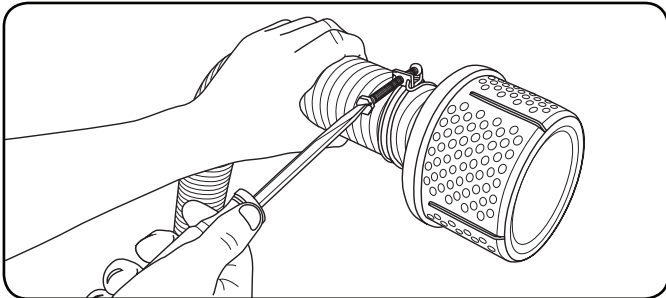
5. Wrap the 2" NPT inlet clockwise with the Teflon tape provided. Carefully thread the male connector to the intake port.



6. Attach the quick coupler to the male coupler and lock in place with the cam lock.



7. Attach the strainer to the intake hose and secure with the hose clamp.



8. Remove the cap from the pump chamber and completely fill the chamber with clean water. Tighten the cap.

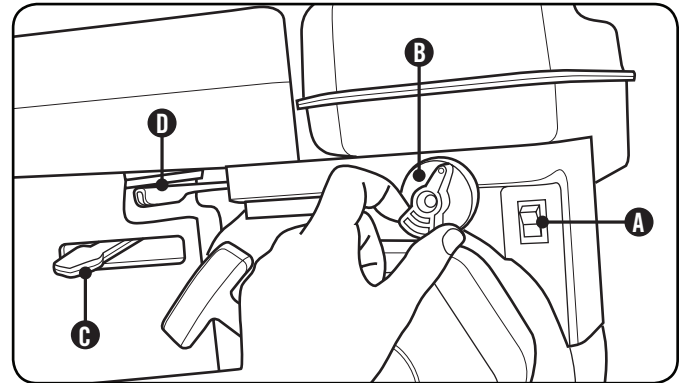
### **⚠ WARNING**

**DO NOT** run the pump dry.

Running the pump dry can destroy the pump seals and will void the warranty. If the pump was running while dry, stop the engine and allow it to cool thoroughly before filling the chamber with water.

### Starting the Engine

1. Make certain the semi-trash pump is on a flat, level surface.
2. Flip engine switch (A) to "ON" position.
3. Rotate the fuel valve (B) to the "ON" position.
4. Move the choke lever (C) to the "Choke" position.
5. Pull the starter cord slowly until resistance is felt and then pull rapidly.
6. As engine warms up, move the choke lever (C) to "Run".
7. Move the throttle lever (D) to the "Fast" position.



### **NOTE**

If the engine starts but does not run make certain that the semi-trash pump is on a flat, level surface. The engine is equipped with a low oil sensor that will prevent the engine from running when the oil level falls below a critical threshold.

Pump performance can be adjusted using the throttle. To decrease pump output, slide the throttle to the right. To increase it, slide the throttle to the left.

### Stopping the Engine

1. Turn the ignition switch to the "Off" position.
2. Rotate the fuel valve to the "Off" position.
3. Allow the engine to cool thoroughly.  
Remove the cap from the cooling pump chamber and allow it drain completely.

# MAINTENANCE AND STORAGE

The owner/operator is responsible for all periodic maintenance.

## **WARNING**

Never operate a damaged or defective semi-trash pump.

## **WARNING**

Improper maintenance will void your warranty.

## **NOTE**

Maintenance, replacement, or repair of emission control devices and systems may be performed by any non-road engine repair establishment or individual.

Complete all scheduled maintenance in a timely manner. Correct any issue before operating the semi-trash pump.

## **NOTE**

For service or parts assistance, contact our help line at **1-877-338-0999**.

## Engine Maintenance

To prevent accidental starting, remove and ground spark plug wire before performing any service.

### Oil

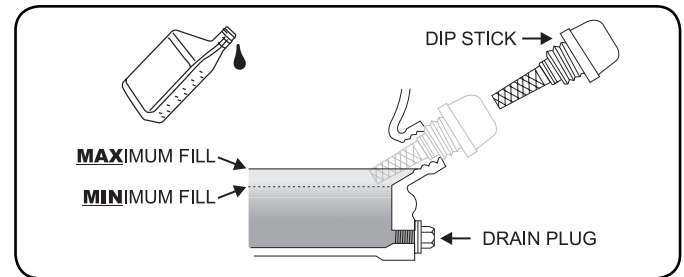
Change oil when the engine is warm. Refer to the oil specification to select the proper grade of oil for your operating environment.

1. Remove the oil drain plug with a 12 mm socket and extension.
2. Allow the oil to drain completely.
3. Replace the drain plug.
4. Remove oil fill cap/dipstick to add oil.
5. Add 0.63 qt (0.6 L) of oil and replace oil fill cap/dipstick.
6. Dispose of used oil at an approved waste management facility.

## **NOTE**

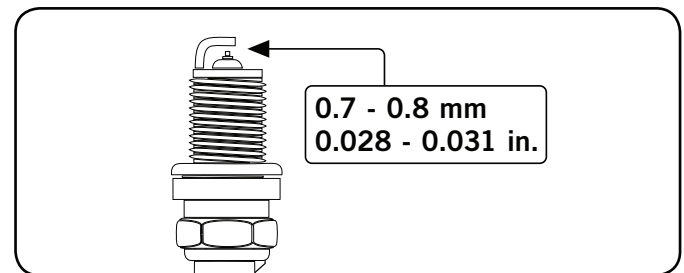
Once oil has been added, a visual check should show oil about 1-2 threads from running out of the fill hole. If using the dipstick to check oil level, **DO NOT** screw in the dipstick while checking.

### Oil Cont'd.



### Spark Plugs

1. Remove the spark plug cable from the spark plug.
2. Use the spark plug tool that shipped with your semi-trash pump to remove the plug.
3. Inspect the electrode on the plug. It must be clean and not worn to produce the spark required for ignition.
4. Make certain the spark plug gap is 0.7 - 0.8mm or (0.028 - 0.031 in.).



5. Refer to the spark plug recommendation chart when replacing the plug.
6. Carefully thread the plug into the engine.
7. Use the spark plug tool to firmly install the plug.
8. Attach the spark plug wire to the plug.

### Air Filter

1. Remove the snap-on cover holding the air filter to the assembly.
2. Remove the foam element.
3. Wash in liquid detergent and water. Squeeze thoroughly dry in a clean cloth.
4. Saturate in clean engine oil.
5. Squeeze in a clean, absorbent cloth to remove all excess oil.
6. Place the filter in the assembly.
7. Reattach the air filter cover and snap in place.

## Cleaning

### ⚠ CAUTION

DO NOT spray engine with water.

Water can contaminate the fuel system.

Use a damp cloth to clean exterior surfaces of the engine.  
Use a soft bristle brush to remove dirt and oil.  
Use an air compressor (25 PSI) to clear dirt and debris from the engine.

## Adjustments

The air-fuel mixture is not adjustable. Tampering with the governor can damage your semi-trash pump and your electrical devices and will void your warranty. CPE recommends that you contact our service line at **1-877-338-0999** for all other service and/or adjustment needs.

## Maintenance Schedule

Follow the service intervals indicated in the following maintenance schedule.

Service your semi-trash pump more frequently when operating in adverse conditions.

Contact our help line at **1-877-338-0999** to locate the nearest Champion Power Equipment certified service dealer for your semi-trash pump or engine maintenance needs.

Every 8 hours or daily	
	Check oil level
	Clean around air intake and muffler
First 5 Hours	
	Change oil
Every 50 hours or every season	
	Clean air filter
	Change oil if operating under heavy load or in hot environments
Every 100 hours or every season	
	Change oil
	Clean/Adjust spark plug
	Check/Adjust valve clearance *
	Clean spark arrester
	Clean fuel tank and filter *
Every 3 years	
	Replace fuel line

\*To be performed by knowledgeable, experienced owners or Champion Power Equipment certified dealers.

## Storage

For longer term storage, please follow these guidelines.

### Engine Storage

1. Allow the engine to cool completely before storage.
2. Clean the engine according to the instructions in the Maintenance section.
3. Drain all fuel completely from the fuel line and carburetor to prevent gum from forming.
4. Add a fuel stabilizer into the fuel tank.
5. Change the oil.
6. Remove the spark plug and pour about ½ ounce of oil into the cylinder. Crank the engine slowly to distribute the oil and lubricate the cylinder.
7. Reattach the spark plug.

### Semi-Trash Pump Storage

1. Allow the semi-trash pump to cool completely before storage.
2. Turn off the fuel supply at the fuel valve.
3. Drain the pump chamber thoroughly.
4. Clean the semi-trash pump according to the instructions in the Maintenance section.
5. Once the pump is dry, spray WD-40 or similar product into the pump housing through all ports and drainage hole.
6. Store in a clean, dry place out of direct sunlight.

# TROUBLESHOOTING

Problem	Cause	Solution
Semi-trash pump will not start	No fuel	Add fuel
	Faulty spark plug	Replace spark plug
Semi-trash pump will not start; Semi-trash pump starts but runs roughly	Low oil level	Fill crankcase to the proper level; place semi-trash pump on a flat, level surface
	Choke in the wrong position	Adjust choke
	Spark plug wire loose	Attach wire to spark plug
Semi-trash pump shuts down during operation	Out of fuel	Fill fuel tank
	Low oil level	Fill crankcase to the proper level; place semi-trash pump on a flat, level surface
Semi-trash pump overheating or performing poorly	Strainer or hose clogged	Remove debris from strainer or hose
	Pump not primed	Re-prime pump
	Suction hose out of water	Place suction hose under the surface of the water
	Head limit exceeded	Relocate pump so suction head is less than discharge head (maximum 98 feet)
	Air leak	Tighten connectors and clamps or replace seal packing

## For further technical support:

### Technical Service

Mon – Fri 8:30 AM – 5:00 PM (PST/PDT)

Toll Free: 1-877-338-0999

tech@championpowerequipment.com



**Engine Specifications**

- Engine . . . . . 163 cc OHV CPE

**Semi-Trash Pump Specifications**

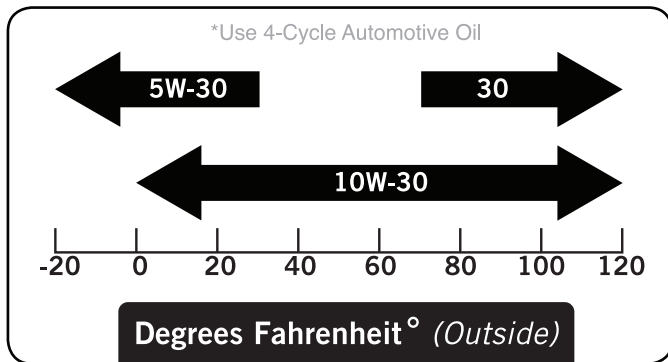
- Inlet Diameter . . . . . 2 inch NPT
- Outlet Diameter . . . . . 2 inch NPT
- Fuel Capacity . . . . . 1.06 gallons (4 L)
- Total Head . . . . . 98 feet (30 m)
- Suction Head . . . . . 26 feet (8 m)
- Max Delivery Volume . . . . . 158 gal/min (598 L/min)
- Max Solid Waste . . . . . ¾" diameter (1.9 cm)
- Gross Weight . . . . . 81.4 lbs. (37 kg)
- Net Weight . . . . . 74.8 lbs. (34 kg)
- Height . . . . . 18.2 in. (46.3 cm)
- Width . . . . . 18.7 in. (47.66 cm)
- Length . . . . . 20.2 in. (51.2 cm)

**Fuel**

Fuel capacity is 1.06 gallons (4 L). Use regular unleaded gasoline with a minimum octane rating of 85 and an ethanol content of less than 10% by volume.

**Oil**

Use 4-Cycle automotive oil.  
 Oil capacity is 0.63 qt qt (0.6 L).  
 Please reference the following chart for recommended oil types for use in the semi-trash pump.



**Spark Plugs**

Your semi-trash pump comes equipped with a ¾" long reach plug (19 mm):

- **NGK BR6ES or equivalent**

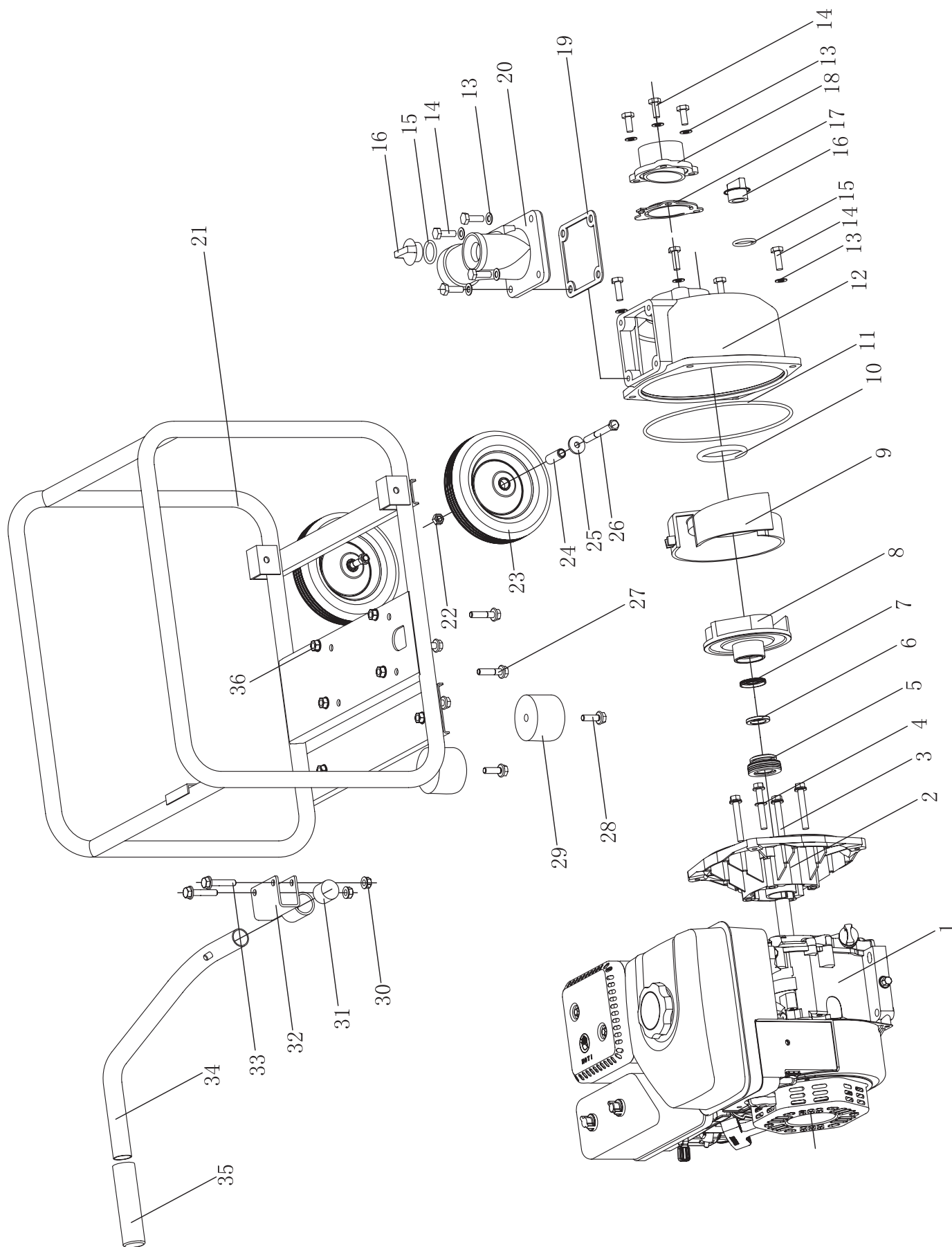
Make certain the spark plug gap is 0.7 - 0.8 mm or (0.028 - 0.031 in.).

**Valve Clearance**

- Intake: 0.13 – 0.17 mm (0.005 – 0.007 in.)
- Exhaust: 0.18 – 0.22 mm (0.007 – 0.009 in.)

# SPECIFICATIONS

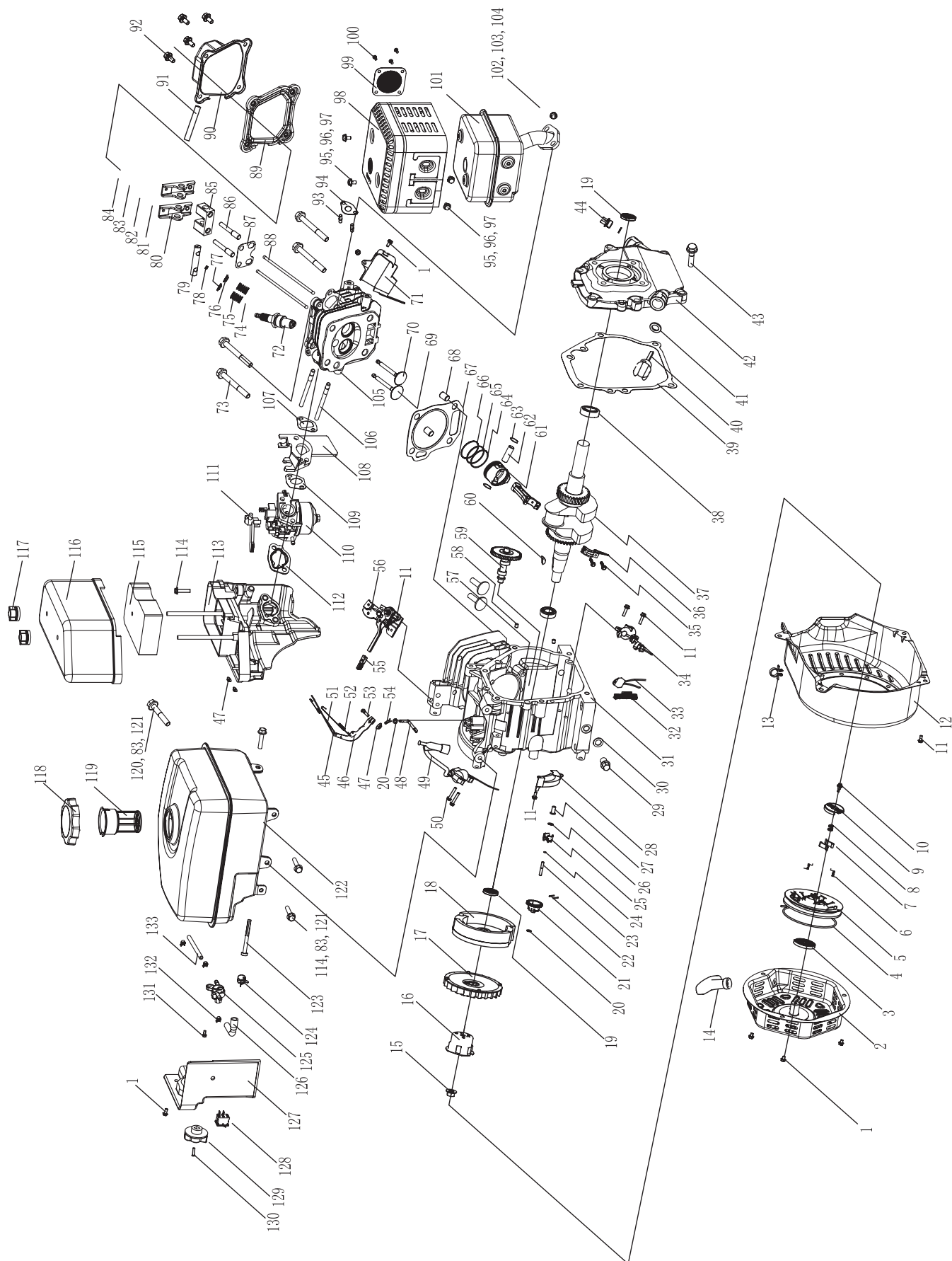
## Parts Diagram



#	Part Number	Description	Qty
1	168F-G10	Engine	1
2	WP-20-1000500	Pump Body	1
3	GB5789 M8x55	Bolt M8x55	4
4	WP-20-1000005	Washer	4
5	WP-20-1000510	Casing Wear Ring	1
6	WP-20-1000402	Impeller Wear Ring	1
7	WP-20-1000403	Impeller Seals	1
8	WP-20-1000401	Impeller	1
9	WP-20-1000302	Spiral Case	1
10	GB3452.1 53x7	"O" Ring (53X7)	1
11	GB3452.1 196x4	"O" Ring (196X4)	1
12	WP-20-1000200	Pump Cover	1
13	GB97.1 8	Packing 8	11
14	GB5783 M8x20	Flange Bolt M8x20	7
15	GB3452.1 23.6x3.55	"O" Ring (23.6X3.55)	2
16	WP-20-1000207	Plug	2
17	WP-20-1000209	One Way Valve	1
18	WP-20-1000206-CPE	Glange (NPT)	1
19	WP-20-1000204	Seal Packing	1
20	WP-20-1000203-CPE	Elbow Draft Tube (NPT)	1
21	WP20-03291000	Frame	1
22	GB6184 M8	Nut M8	2
23	ST168FD-1144053F	Wheel	2
24	WP20-03271202	Bushing	2
25	GB96 8	Washer 8	2
26	GB5782 M8x75	Flange Bolt M8x75	2
27	GB5789 M8x35	Flange Bolt M8x35	4
28	GB5789 M8x25	Flange Bolt M8x25	2
29	ST290QXG-2000003	Rubber	2
30	GB6177 M8	Nut M8	8
31	ST02FD-03143401	Handle Cap	1
32	ST02FD-03143402	Handle Bracket	1
33	GB5789 M8x45	Flange Bolt M8x45	2
34	WP20-03271101	Handle	1
35	ST188FD-1741002-C	Handle Bar Grip	1
36	GB6187.1 M8	Nut M8	4

# SPECIFICATIONS

## Engine Parts Diagram



#	Part Number	Description	Qty
1	GB5789--86-FB6-8	Flange Bolt M6*8	5
2	160.061100.32	Recoil Starter Cover	1
3	ST160F--1061005	Recoil Starter Spring	1
4	ST160F--1061009	Recoil Starter Rope	1
5	ST160F--1061001-A	Recoil Starter Reel	1
6	ST188F-1060006	Ratchet Spring	2
7	ST188F-1060005	Starter Ratchet (Metal)	2
8	ST188F-1060004	Ratchet Guide Spring	1
9	ST188F-1060003	Ratchet Guide	1
10	ST188F-1060002	Setting Screw	1
11	GB5789--86-FB6-12	Flange Bolt M6*12	11
12	ST168F--1080100-G	Fan Cover Comp	1
13	ST168F-1070008-G	Tube Clip 9.5	1
14	ST160F--1061200	Recoil Starter Knob	1
15	ST160F--1050010	Nut M14	1
16	ST160F--1060001	Start Hub	1
17	ST168F--1080001	Cooling Fan	1
18	ST168F--1120100	Fly Wheel	1
19	ST168F--1030100	Oil Seal	2
20	ST160F--1110108	Governor Washer	2
21	ST160F--1110101	Governor Weight Holder	1
22	ST160F--1110102	Governor Weight Pin	2
23	ST160F--1110104	Governor Shaft	1
24	ST160F--1110103	Governor Holder Clip	1
25	ST160F--1110107	Governor Weight	2
26	ST160F--1110106	Governor Shaft Washer	1
27	ST160F--1110105	Governor Cover	1
28	ST168F--1080200	Side Place	1
29	ST160F--1030003	Drain Plug Bolt	2
30	ST160F--1030004	Drain Bolt Washer	2
31	ST168F-1030012-G	Crankcase (for USA)	1
32	168.120700.00	Change Wire,Flameout	1
33	ST160F-1126000	Diode Comp	1
34	ST160F-1127000-A	Oil Level Switch Assy	1
35	GB5758 AM7x35	Flange Bolt	2
36	ST168F--1050100	Connecting Rod Comp	1
37	ST168F-1050001-Q	Crankshaft Comp	1
38	GB/T—276--94	Radial Ball Bearing 6205	2
39	ST168F-1030008-G	Case Over Packing (No Asbestos)	1
40	ST160F--1030001-B	Oil Filler Cap Assembly	1
41	ST160F--1030002	Oil Filler Cap Packing	2
42	ST168F-1030007-5/16-G	Crankcase Cover (For USA)	1
43	GB5789--86-FB8-32	Flange Bolt 8*32	6
44	ST160F--1030005-B	Oil Filler Cap	1
45	ST168F--1110005	Throttle Return Spring	1
46	ST160F--1110003	Governor Arm	1
47	GB6177--86-N6	Nut M6	3
48	ST160F--1110001	Governor Arm Shaft	1
49	ST160F-1123000-G	Ignition	1
50	GB5789--86-FB6-25	Flange Bolt 6*25	2
51	ST168F--1110006	Governor Rod	1
52	ST168F--1110007	Governor Spring	1
53	ST160F--1110004	Governor Arm Bolt	1
54	ST160F--1110008	Lock Pin	1
55	168.111008.01	Sheath,Grip	1
56	168.111000.30	Control Assembly	1
57	ST168F--1040013	Valve Lifter	2
58	ST168F-1030015-G	Dowel Pin 9*14	2
59	ST168F--1041000	Camshaft Assembly	1
60	4X7.5X19-GB1099-79	Key	1
61	ST168F--1050005	Piston	1
62	ST168F--1050003	Piston Pin	1
63	ST168F--1050004	Piston Pin Clip	2
64	ST168F--1050200	Oil Ring Comp	1
65	ST168F--1050006	Second Ring Set	1
66	ST168F--1050007	First Ring Set	1
67	ST168F--1030009-G	Cylinder Head Gasket	1

#	Part Number	Description	Qty
68	152FMD--1001007	Dowel Pin 10*16	2
69	ST168F--1040002	Intake Valve	1
70	ST168F--1040006	Exhaust Valve	1
71	ST168F--1080002-G	Shroud Comp	1
72	F6RTC	Spark Plug	1
73	GB5789--86-FB8-55	Flange Bolt 8*55	4
74	ST168F-1040014	Valve Oil Seal	2
75	ST160F--1040003	Valve Spring	2
76	ST160F--1040007	Exhaust Valve Spring Retainer	1
77	ST160F--1040001	Intake Valve Spring Retainer	1
78	ST160F--1040008	Valve Rotator	1
79	168.040202.34	Rocker Axes	1
80	ST160F--1040022	Entrance Rocker	1
81	ST160F--1040024	Rectify Bolt	2
82	ST168F--1040025	Lock Nut	2
83	GB97.1 6	Washer 6	6
84	GB6183-86-M6	Nut M6	2
85	168.040201.34	Valve Rocker Arm	1
86	ST168F--1040027	Pivot Bolt	2
87	168.040004.34	Guide,Push Rod	1
88	ST168F--1040005	Push Rod	2
89	ST160F--1020002-A	Head Over Packing	1
90	ST168F--1020100-C	Head Over Comp	1
91	ST160F--1020001	Breather Tube	1
92	GB5789--86-FB6-15	Flange Bolt M6*15	4
93	ST160F-1010002	Stud Bolt	2
94	ST168F-1100200-G	Muffler Packing (No Asbestos)	1
95	GB16674 M5x10	Screw M5x8	4
96	GB848-85-W5	Washer 5	4
97	GB859-87-SW5	Spring Washer 5	4
98	168.101200.34	Muffler Protector(Chromeplate)	1
99	188.101300.34	Arrester,Spark	1
100	GB818 M4x6	Bolt M4x6	4
101	168.101100.34	Muffler Comp	1
102	GB6170--86-N8	Nut M8	2
103	GB848-85-W8	Washer 8	2
104	GB859-87-SW8	Spring Washer 8	2
105	ST168F--1010100-G	Cylinder Head Comp	1
106	ST160F--1010001	Stud Bolt 6*113	2
107	ST160F--1130002-CPE	Insulator Packing (No Asbestos)	1
108	ST168F--1130001	Carburetor Insulator	1
109	ST160F--1130003-CPE	Carburetor Packing (No Asbestos)	1
110	ST168F-1130000-G	Carburetor Assembly	1
111	ST160F--1130100	Choke Level Comp	1
112	ST160F--1130004	Carburetor Washer	1
113	168.091100.34	Air Cleaner Elbow Comp	1
114	GB5789--86-FB6-20	Flange Bolt M6*20	4
115	168.091003.34	Air Cleaner Element	1
116	168.091200.34	Air Cleaner Cover	1
117	ST168F-1090100-C	Air Cleaner Cover Nut (Plastic)	2
118	ST160F--1070100H	Fuel Tank Cap Comp	1
119	ST160F-1070006	Fuel Filter	1
120	GB5789--86-FB6-29	Flange Bolt M6*29	1
121	GB859-87-SW6	Spring Washer 6	4
122	168.071000.35	Fuel Tank Comp	1
123	ST152FD-1070200	Fuel Filter	1
124	ST1P68F-1070006-F	Clip	1
125	ST168F-1070200-G	Fuel Valve	1
126	ST168F-1070005-G	Tube 2	1
127	168.070010.34	Fuel Tank Veil	1
128	21.001000.00	Switch	1
129	ST168F-1070003-G	Fuel Valve Knob	1
130	GB818-88-B4-12	Bolt M4x12	1
131	GB16674--1-FB5-12	Flange Bolt M5*12	1
132	ST188FD--1070006A	Clip 8	3
133	ST168F-1070004-G	Tube 1	1

# WARRANTY

## WARRANTY

### CHAMPION POWER EQUIPMENT 1 YEAR LIMITED WARRANTY

Effective September 1, 2006. Replaces all undated warranties and all warranties dated before September 1, 2006.

### Warranty Qualifications

Champion Power Equipment (CPE) will register this warranty upon receipt of your Warranty Registration Card and a copy of your sales receipt from one of CPE's retail locations as proof of purchase.

Please submit your warranty registration and your proof of purchase within ten (10) days of the date of purchase.

### Repair/Replacement Warranty

CPE warrants to the original purchaser that the mechanical and electrical components will be free of defects in material and workmanship for a period of one (1) year from the original date of purchase (90 days for commercial & industrial use). Transportation charges on product submitted for repair or replacement under this warranty are the sole responsibility of the purchaser. This warranty applies only to the original purchaser and is not transferable.

### Do Not Return The Unit To The Place Of Purchase

Contact CPE's Technical Service and CPE will troubleshoot any issue via phone or e-mail. If the problem is not corrected by this method, CPE will, at its option, authorize evaluation, repair or replacement of the defective part or component at a CPE Service Center. CPE will provide you with a case number for warranty service. Please keep it for future reference. Repairs or replacements without prior authorization, or at an unauthorized repair facility, will not be covered by this warranty.

### Warranty Exclusions

This warranty does not cover the following repairs and equipment:

#### Normal Wear

Semi-trash pumps need periodic parts and service to perform well. This warranty does not cover repair when normal use has exhausted the life of a part or the equipment as a whole.

#### Installation, Use and Maintenance

This warranty will not apply to parts and/or labor if this semi-trash pump is deemed to have been misused, neglected, involved in an accident, abused, loaded beyond the semi-trash pump's limits, modified, installed improperly or connected incorrectly to any electrical component.

#### Installation, Use and Maintenance Cont'd.

Normal maintenance such as spark plugs, air filters, adjustments, fuel system cleaning and obstruction due to buildup is not covered by this warranty.

#### Other Exclusions

This warranty excludes:

- Cosmetic defects such as paint, decals, etc.
- Wear items such as filter elements, o-rings, etc.
- Accessory parts such as starting batteries, and storage covers.
- Failures to due acts of God and other force majeure events beyond the manufacturer's control.
- Problems caused by parts that are not original Champion Power Equipment parts.

This warranty does not apply to semi-trash pumps used for prime power in place of a utility.

#### Limits of Implied Warranty and Consequential Damage

Champion Power Equipment disclaims any obligation to cover any loss of time, use of this product, freight, or any incidental or consequential claim by anyone from using this semi-trash pump. THIS WARRANTY IS IN LIEU OF ALL OTHER WARRANTIES, EXPRESS OR IMPLIED, INCLUDING WARRANTIES OF MERCHANTABILITY OR FITNESS FOR A PARTICULAR PURPOSE.

A unit provided as an exchange will be subject to the warranty of the original unit. The length of the warranty governing the exchanged unit will remain calculated by reference to the purchase date of the original unit. This warranty gives you certain legal rights which may change from state to state. Your state may also have other rights you may be entitled to that are not listed within this warranty.

### Contact Information

#### Address

Champion Power Equipment, Inc.  
Customer Service  
10006 Santa Fe Springs Rd.  
Santa Fe Springs, CA 90670  
[www.championpowerequipment.com](http://www.championpowerequipment.com)

#### Customer Service

Mon – Fri 8:30 AM – 5:00 PM (PST/PDT)  
Toll Free: 1-877-338-0999  
Fax no.: 1 (562) 236-9429

#### Technical Service

Mon – Fri 8:30 AM – 5:00 PM (PST/PDT)  
Toll Free: 1-877-338-0999  
[tech@championpowerequipment.com](mailto:tech@championpowerequipment.com)

**Champion Power Equipment, Inc (CPE),  
and the United States Environment Protection Agency (U.S. EPA.)  
Emission Control System Warranty**

Your Champion Power Equipment (CPE) engine complies with U.S. EPA emission regulations.

**YOUR WARRANTY RIGHTS AND OBLIGATIONS:**

The US EPA AND CPE are pleased to explain the Federal Emission Control Systems Warranty on your 1997 and later small off-road engine. New engines must be designed, built and equipped, at the time of sale, to meet U.S. EPA regulations for small non-road engines. CPE must warrant the emission control system on your small off-road engine for the period of time listed below, provided there has been no abuse, neglect, unapproved modification, or improper maintenance of your small off-road engine.

Your emission control system may include parts such as the carburetor, fuel-injection system, the ignition system, catalytic converter and fuel lines. Also included may be hoses, belts, connectors and other emission related assemblies. Where a warrantable condition exists, CPE will repair your small off-road engine at no cost to you including diagnosis, parts and labor.

**MANUFACTURER'S EMISSION CONTROL SYSTEM WARRANTY COVERAGE:**

This emission control system is warranted for two years, subject to provisions set forth below. If, during the warranty period, emission related part on your engine is defective in materials or workmanship, the part will be repaired or replaced by CPE.

**OWNER WARRANTY RESPONSIBILITIES:**

As the small off-road engine owner, you are responsible for the performance of the required maintenance listed in your Owner's Manual. CPE recommends that you retain all your receipts covering maintenance on your small off-road engine, but CPE cannot deny warranty solely for the lack of receipts or for your failure to ensure the performance of all scheduled maintenance.

**As the small off-road engine owner, you should however be aware that CPE may deny you warranty coverage if your small, off-road engine or a part has failed due to abuse, neglect, improper maintenance or unapproved modifications.**

You are responsible for presenting your small off-road engine to an Authorized CPE service outlet, CPE dealer or CPE, Santa Fe Springs, Ca. as soon as a problem exists. The warranty repairs should be completed in a reasonable amount of time, not to exceed 30 days.

If you have any questions regarding your warranty rights and responsibilities, you should contact:

**Champion Power Equipment, Inc.**

ATTN: Customer Service  
10006 Santa Fe Springs Road  
Santa Fe Springs, CA 90670  
Tel: 1-877-338-0999

The emission warranty is a defects warranty. Defects are judged on normal engine performance. The warranty is not related to an in-use emission test.



# WARRANTY

## EMISSION CONTROL SYSTEM WARRANTY

The following are specific provisions relative to your Emission Control System Warranty Coverage.

Emission Control System Warranty (ECS Warranty) for 1997 and later model year engines):

1. **APPLICABILITY:** This warranty shall apply to 1997 and later model year engines). The ECS Warranty Period shall begin on the date the new engine or equipment is delivered to its original, end-use purchaser, and shall continue for 24 consecutive months thereafter.
2. **GENERAL EMISSIONS WARRANTY COVERAGE**  
CPE warrants to the original, end-use purchaser of the new engine or equipment and to each subsequent purchaser that each of its small off-road engines is:
  - a. Designed, built and equipped so as to conform at the time of sale with applicable regulations under section 213 of the Clean Air Act, as amended, 42 U.S.C. 7401 et seq.
  - b. Free from defects in materials and workmanship that cause the failure of a warranted part to be identical in all material respects to the part as described in the engine manufacturer's application for certification for a period of two years.
3. **THE WARRANTY ON EMISSION-RELATED PARTS WILL BE INTERPRETED AS FOLLOWS:**
  - a. Any warranted part that is not scheduled for replacement as required maintenance in the Owners Manual shall be warranted for the ECS Warranty Period. If any such part fails during the ECS Warranty Period, it shall be repaired or replaced by CPE according to Subsection "d" below. Any such part repaired or replaced under the ECS Warranty shall be warranted for any remainder of the ECS Warranty Period.
  - b. Any warranted, emissions-related part which is scheduled only for regular inspection as specified in the Owners Manual shall be warranted for the ECS Warranty Period. A statement in such written instructions to the effect of "repair or replace as necessary", shall not reduce the ECS Warranty Period. Any such part repaired or replaced under the ECS Warranty shall be warranted for the remainder of the ECS Warranty Period.
  - c. Any warranted, emissions-related part which is scheduled for replacement as required maintenance in the Owner's Manual shall be warranted for the period of time prior to the first scheduled replacement point for that part. If the part fails prior to the first scheduled replacement, the part shall be repaired or replaced by CPE according to Subsection "d" below. Any such emissions-related part repaired or replaced under the ECS Warranty, shall be warranted for the remainder of the ECS Warranty Period prior to the first scheduled replacement point for such emissions-related part.
  - d. Repair or replacement of any warranted, emissions-related part under this ECS Warranty shall be performed at no charge to the owner at a CPE Authorized Service Outlet.
  - e. The owner shall not be charged for diagnostic labor which leads to the determination that a part covered by the ECS Warranty is in fact defective, provided that such diagnostic work is performed at a CPE Authorized Service Outlet.
  - f. CPE shall be liable for damages to other original engine components or approved modifications proximately caused by a failure under warranty of an emission-related part covered by the ECS Warranty.
  - g. Throughout the ECS Warranty Period, CPE shall maintain a supply of warranted emission-related parts sufficient to meet the expected demand for such emission-related parts.
  - h. Any CPE Authorized and approved emission-related replacement part may be used in the performance of any ECS Warranty maintenance or repair and will be provided without charge to the owner. Such use shall not reduce CPE's warranty obligation.
  - i. Unapproved add-on or modified parts may not be used to modify or repair a CPE engine. Such use voids this ECS Warranty and shall be sufficient grounds for disallowing an ECS Warranty claim. CPE shall not be liable hereunder for failures of any warranted parts of a CPE engine caused by the use of such an unapproved add-on or modified part.



**EMISSION-RELATED PARTS INCLUDE THE FOLLOWING** (using those portions of the list applicable to the engine):

Systems covered by this warranty	Parts Description
Fuel Metering System	Fuel regulator, Carburetor and internal parts
Air Induction System	Air cleaner, Intake manifold
Ignition System	Spark plug and parts, Magneto ignition system
Exhaust System	Exhaust manifold, catalytic converter
Miscellaneous Parts	Tubing, Fittings, Seals, Gaskets, and Clamps associated with these listed systems

**TO OBTAIN WARRANTY SERVICE:**

You must take your CPE engine or the product on which it is installed, along with your warranty registration card or other proof of original purchase date, at your expense, to any Champion Power Equipment dealer who is authorized by Champion Power Equipment, Inc. to sell and service that CPE product during his normal business hours. Claims for repair or adjustment found to be caused solely by defects in material or workmanship will not be denied because the engine was not properly maintained and used.

**If you have any questions regarding your warranty rights and responsibilities, or to obtain warranty service, please write or call the Customer service of Champion Power Equipment, Inc.:**

**Champion Power Equipment, Inc.**

ATTN: Customer Service  
 10006 Santa Fe Springs Road  
 Santa Fe Springs, CA 90670  
 Tel: 1-877-338-0999