

Table of Contents

Introduction	1	Specifications	11
Replacement Engine.....	1	Engine Specifications.....	11
Accessories.....	1	Fuel.....	11
This Booklet.....	1	Oil.....	11
Manual Conventions	2	Spark Plugs	11
Safety Rules	3	Valve Clearance.....	11
Controls and Features.....	5	Keyway Shaft.....	11
Replacement Engine.....	5	Dimensions	12
Assembly	6	Parts Diagram	13
Remove the Engine from the Shipping		Parts List	14
Carton	6	Troubleshooting	16
Add Engine Oil	6	Warranty	17
Add Fuel.....	6	Warranty Qualifications	17
Operation	7	Repair/Replacement Warranty.....	17
Engine Location.....	7	Do not return the unit to the place of	
Starting the Engine.....	7	purchase	17
Stopping the Engine	7	Warranty Exclusions.....	17
Maintenance	8	Normal Wear	17
Engine Maintenance.....	8	Installation, Use and Maintenance.....	17
Oil.....	8	Other Exclusions	17
Spark Plugs	8	Limits of Implied Warranty and	
Air Filter.....	8	Consequential Damage	17
Cleaning	9	Contact Information	18
Adjustments.....	9	Address.....	18
Maintenance Schedule.....	9	Customer Service	18
Storage	10	Technical Service.....	18
Engine Storage.....	10	Notes	19

Introduction

Congratulations on your purchase of a Champion Power Equipment engine. CPE designs and builds engines to strict specifications. With proper use and maintenance, this engine will bring years of satisfying service.

Replacement Engine

This unit is a gasoline driven, key-way shaft replacement engine. It is designed to supply power for pumps, pressure washers, reel-type lawn mowers, go-carts, agricultural and construction equipment and other pulley-style applications.

Record the model and serial numbers as well as date and place of purchase for future reference. Have this information available when ordering parts and when making technical or warranty inquiries.

Accessories

Champion Power Equipment manufactures and sells accessories designed to help you get the most from your purchase. To find out more, please visit our web site at

www.championpowerequipment.com

This Booklet

Every effort has been made to ensure the accuracy and completeness of the information in this manual. We reserve the right to change, alter and/or improve the product and this document at any time without prior notice.

Champion Power Equipment Support
1-877-338-0999
Model Number
60010
Serial Number
Date of Purchase
Purchase Location

Manual Conventions

Manual Conventions

This manual uses the following symbols to help differentiate between different kinds of information. The safety symbol is used with a key word to alert you to potential hazards in operating and owning power equipment.

Follow all safety messages to avoid or reduce the risk of serious injury or death.

DANGER

DANGER indicates an imminently hazardous situation which, if not avoided, *will* result in death or serious injury.

WARNING

WARNING indicates a potentially hazardous situation which, if not avoided, *could* result in death or serious injury.

CAUTION

CAUTION indicates a potentially hazardous situation which, if not avoided, *may* result in minor or moderate injury.

CAUTION

CAUTION used without the safety alert symbol indicates a potentially hazardous situation which, if not avoided, *may* result in property damage.

NOTE

If you have questions regarding your engine, we can help. Please call our help line at 1-877-338-0999.

Safety Rules

WARNING

Read this manual thoroughly before operating your engine. Failure to follow instructions could result in serious injury or death.

WARNING

The engine exhaust from this product contains chemicals known to the state of California to cause cancer, birth defects, or other reproductive harm.

DANGER

Engine exhaust contains carbon monoxide, a colorless, odorless, poison gas. Breathing carbon monoxide will cause nausea, dizziness, fainting or death.

Operate engine outdoors only in a well ventilated area.
DO NOT operate the engine inside any building, enclosure or compartment.
DO NOT allow exhaust fumes to enter a confined area through windows, doors, vents or other openings.

DANGER

Rotating parts can entangle hands, feet, hair, clothing and/or accessories.

Traumatic amputation or severe laceration can result.

Keep hands and feet away from rotating parts.
Tie up long hair and remove jewelry.
Operate equipment with guards in place.
DO NOT wear loose-fitting clothing, dangling drawstrings or items that could become caught.

WARNING

Sparks can result in fire or electrical shock.

When servicing the engine:

Disconnect the spark plug wire and place it where it cannot contact the plug.
DO NOT check for spark with the plug removed.
Use only approved spark plug testers.

WARNING

Running engines produce heat.
Severe burns can occur on contact.
Combustible material can catch fire on contact.

DO NOT touch hot surfaces.
Avoid contact with hot exhaust gases.
Allow equipment to cool before touching.
Maintain at least three feet of clearance on all sides to ensure adequate cooling.
Maintain at least five feet of clearance from combustible materials.

Safety Rules

DANGER

Fuel and fuel vapors are highly flammable and extremely explosive.

Fire or explosion can cause severe burns or death.

Unintentional startup can result in entanglement, traumatic amputation or laceration.

When adding or removing fuel

Turn the engine off and let it cool for at least two minutes before removing the fuel cap. Loosen the cap slowly to relieve pressure in the tank. Only fill or drain fuel outdoors in a well-ventilated area.

DO NOT overfill the fuel tank.

Always keep fuel away from sparks, open flames, pilot lights, heat and other sources of ignition.

DO NOT light or smoke cigarettes.

When starting the engine

DO NOT attempt to start a damaged engine.

Make certain that the gas cap, air filter, spark plug, fuel lines and exhaust system are properly in place.

Allow spilled fuel to evaporate fully before attempting to start the engine.

Make certain that the engine is resting firmly on level ground.

When transporting or servicing the engine:

Make certain that the fuel shutoff valve is in the off position and the fuel tank is empty.

Disconnect the spark plug wire.

When storing the engine:

Store away from sparks, open flames, pilot lights, heat and other sources of ignition.

WARNING

Rapid retraction of the starter cord will pull hand and arm towards the engine faster than you can let go.

Unintentional startup can result in entanglement, traumatic amputation or laceration.

Broken bones, fractures, bruises or sprains could result.

When starting engine, pull the starter cord slowly until resistance is felt and then pull rapidly to avoid kickback.

DO NOT start or stop the engine with electrical devices plugged in.

CAUTION

Improper treatment or use of the engine can damage it, shorten its life and void your warranty.

Use the engine only for intended uses.

Operate only on level surfaces.

DO NOT expose engine to excessive moisture, dust, or dirt.

DO NOT allow any material to block the cooling slots.

DO NOT use the engine if:

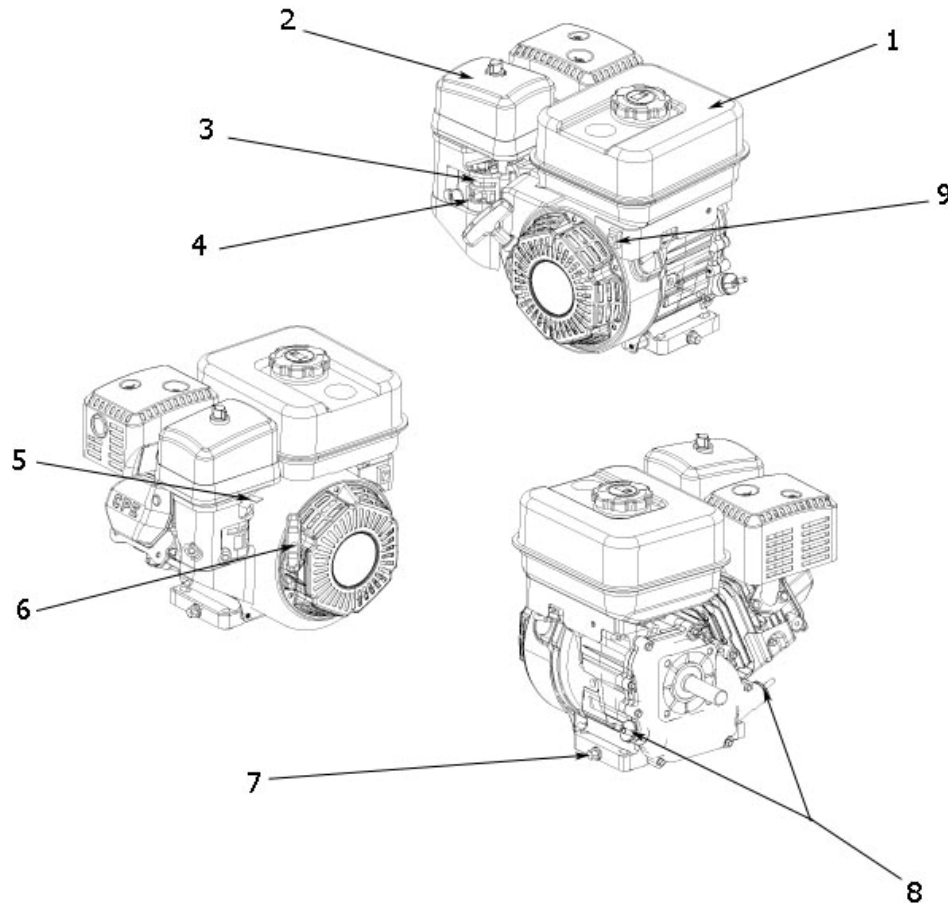
Equipment sparks, smokes or emits flames

Equipment vibrates excessively

Controls and Features

Read this owner's manual before operating your engine. Familiarize yourself with the location and function of the controls and features. Save this manual for future reference.

Replacement Engine



(1) Fuel Tank – 0.97 gallon capacity fuel tank.

(2) Air Cleaner – Protects the engine by filtering dust and debris from the intake air.

(3) Choke – Used to start the engine

(4) Fuel Valve Lever – Turn this valve to the “On” position to supply fuel to the engine.

(5) Throttle - Controls the engine speed

(6) Recoil Starter – Used to start the engine

(7) Oil Drain Plug – Used to drain the oil

(8) Oil Filler Cap – Check and fill engine oil level.

(9) Engine Switch – Flip switch to “On” position to start engine.

Assembly

Assembly

This unit ships from our factory without oil. It must be properly serviced with fuel and oil before operation.

If you have any questions regarding this engine please call our help line at 1-877-338-0999. Please have your serial number and model number available.

Remove the Engine from the Shipping Carton

1. Set the shipping carton on a solid, flat surface.
2. Remove everything from the carton except the engine.
3. Carefully cut each corner of the box from top to bottom. Fold each side flat on the ground to provide a surface area.

Add Engine Oil

CAUTION

DO NOT attempt to crank or start the engine before it has been properly filled with the recommended type and amount of oil. Damage to the generator as a result of failure to follow these instructions will void your warranty.

1. Place the engine on a flat, level surface.
2. Remove oil fill cap/dipstick to add oil.
3. Add 0.63 qt (0.6 L) of oil and replace oil fill cap/dipstick.
4. Check engine oil level daily and add as needed.

CAUTION

The engine is equipped with a low-oil-shutoff and will stop when the oil level in the crankcase falls below the threshold level.

NOTE

Check oil often during the break-in period. Refer to the Maintenance section for recommended service intervals.

Add Fuel

1. Use clean, fresh, regular unleaded fuel with a minimum octane rating of 85.
2. DO NOT mix oil with fuel.
3. Clean the area around the fuel cap.
4. Remove the fuel cap
5. Slowly add fuel to the tank. DO NOT overfill. Allow approximately ¼ inch of space for fuel expansion.
6. Screw on the fuel cap and wipe away any spilled fuel.

CAUTION

Use regular unleaded gasoline with a minimum octane rating of 85.

DO NOT mix oil and gasoline.
Fill tank to approximately ¼" below the top of the tank to allow for fuel expansion.
DO NOT fill fuel tank indoors.
DO NOT fill fuel tank when the engine is running or hot.
DO NOT overfill the fuel tank.
DO NOT light cigarettes or smoke when filling the fuel tank.

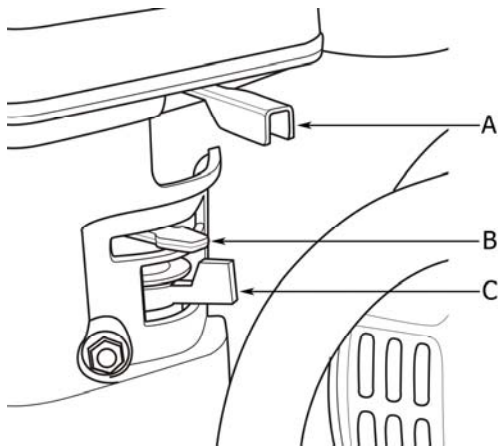
Operation

Engine Location

Place the engine in a well-ventilated area. DO NOT place the engine near vents or intakes where exhaust fumes could be drawn into occupied or confined spaces. Carefully consider wind and air currents when positioning engine.

Starting the Engine

1. Make certain the engine is on a flat, level surface.
2. Check the oil level. Add oil as necessary.
3. Flip engine switch to "ON" position
4. Move the fuel lever (Item C) to the "ON" position (to the right).



5. Move the choke lever (Item B) to the "Choke" position (to the left).
6. Pull the starter cord slowly until resistance is felt and then pull rapidly.
7. As engine warms up, move the choke lever to "Run" (to the right).
8. Move the throttle lever (Item A) to the "Fast" position.

NOTE

If the engine starts but does not run make certain that it is on a flat, level surface. The engine is equipped with a low oil sensor that will prevent the engine from running when the oil level falls below a critical threshold.

Stopping the Engine

1. Let the engine run at no-load for several minutes to stabilize internal temperatures.
2. Turn the ignition switch to the "Off" position.
3. Turn the fuel valve to the "Off" position.

Maintenance

Maintenance

The owner/operator is responsible for all periodic maintenance.

WARNING

Never operate a damaged or defective engine.

WARNING

Improper maintenance will void your warranty.

Complete all scheduled maintenance in a timely manner. Correct any issue before operating the engine.

NOTE

For service or parts assistance, contact our help line at 1-877- 338-0999.

Engine Maintenance

To prevent accidental starting, remove and ground spark plug wire before performing any service.

Oil

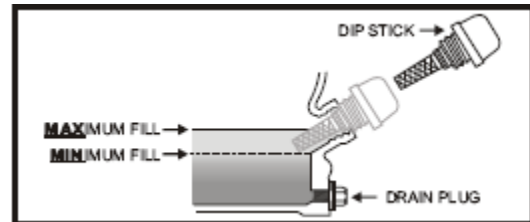
Change oil when the engine is warm. Refer to the oil specification to select the proper grade of oil for your operating environment.

CAUTION

The engine ships from the factory without oil. Before pulling the recoil start or starting the engine, fill with oil. Do not overfill.

1. Remove the oil drain plug with a 15 mm socket and extension.
2. Allow the oil to drain completely.
3. Replace the drain plug.
4. Remove oil fill cap/dipstick to add oil.
5. Add 0.63 qt (0.6 L) of oil and replace oil fill cap/dipstick.

6. Dispose of used oil at an approved waste management facility.



Spark Plugs

1. Remove the spark plug cable from the spark plug.
2. Use a 13/16" (21mm) long reach spark plug socket to remove the plug.
3. Inspect the electrode on the plug. It must be clean and not worn to produce the spark required for ignition.
4. Make certain the spark plug gap is 0.7 - 0.8mm (0.028 - 0.031 in.).
5. Refer to the spark plug recommendation chart when replacing the plug.
6. Carefully thread the plug into the engine.
7. Use a 13/16" (21mm) spark plug tool to firmly install the plug.
8. Attach the spark plug wire to the plug.

Air Filter

1. Remove the snap-on cover holding the air filter to the assembly.
2. Remove the foam element.
3. Wash in liquid detergent and water. Squeeze thoroughly dry in a clean cloth.
4. Saturate in clean engine oil.
5. Squeeze in a clean, absorbent cloth to remove all excess oil.
6. Place the filter in the assembly.
7. Reattach the air filter cover and snap in place.

Cleaning

CAUTION

DO NOT spray engine with water.

Water can contaminate the fuel system.

Use a damp cloth to clean exterior surfaces of the engine.

Use a soft bristle brush to remove dirt and oil.

Use an air compressor (25 PSI) to clear dirt and debris from the engine.

Adjustments

The air-fuel mixture is not adjustable. CPE recommends that you contact our service line at 1-877- 338-0999 for all other service and/or adjustment needs.

Maintenance Schedule

Follow the service intervals indicated in the schedule below.

Service your engine more frequently when operating in adverse conditions.

Contact our help line at 1-877- 338-0999 to locate the nearest Champion Power Equipment certified service dealer for your engine maintenance needs.

Every 8 hours or daily
Check oil level
Clean around air intake and muffler
First 5 Hours
Change oil
First 10 hours
Check/Adjust Valve Clearance *
Every 50 hours or every season
Clean air filter
Change oil if operating under heavy load or in hot environments
Every 100 hours or every season
Change oil
Clean/Adjust spark plug
Check/Adjust valve clearance *
Clean spark arrester
Clean fuel tank and filter *
Every 3 years
Replace fuel line

* To be performed by knowledgeable, experienced owners or Champion Power Equipment certified service dealers

Storage

Storage

Engines stored for over 30 days need to be drained of fuel to prevent gum from forming in the fuel system, carburetor components and hoses. For long term storage, please follow these guidelines.

Engine Storage

1. Allow the engine to cool completely before storage.
2. Clean the engine according to the instructions in the Maintenance section.
3. Drain all fuel completely from the fuel line and carburetor to prevent gum from forming.
4. Add a fuel stabilizer into the fuel tank.
5. Change the oil.
6. Remove the spark plug and pour about $\frac{1}{2}$ ounce of oil into the cylinder. Crank the engine slowly to distribute the oil and lubricate the cylinder.
7. Reattach the spark plug.

Specifications

Engine Specifications

Engine	118 cc OHV CPE
	Single Cylinder
	4-Stroke
	Air-cooled

NOTE

The gross horsepower of this engine was laboratory-rated at our factory in accordance with SAE J1940 as configured to meet safety, emissions, and operating requirements. The actual engine horsepower on this class of engine may be significantly lower..

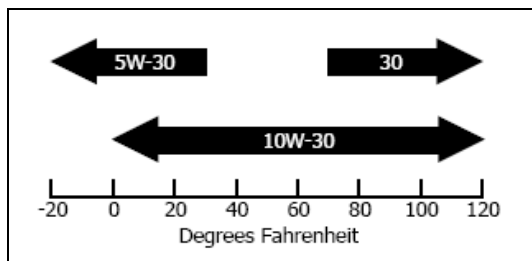
PTO Rotation	Counterclockwise
Ignition Mode	TCI (transistorized)
Displacement	118 cc
Torque (max)	8.7 ft. lbs. at 2800 RPM
Compression	8.5:1
Horizontal Shaft	3/4" x 2 7/16"
	1.91 cm x 6.19 cm
End Hole	Tapped 5/16"
	24 UNF
Fuel Capacity	0.67 gallons (2.7 L)
Weight	37.5 lbs. (17 kg)
Height	13 inches (33 cm)
Width	13.4 inches (34cm)
Length	12 inches (30.4 cm)

Fuel

Fuel capacity is 0.67 US gallons (2.7 L). Use regular unleaded gasoline with a minimum octane rating of 85.

Oil

Oil capacity is 0.63 qt (.6 L).



Spark Plugs

To remove the spark plug from your semi-trash pump use a 13/16" (21mm) long reach spark plug tool.

Intermittent use (less than 1 hour/month) or colder temperatures (below 60°F):
NGK B6ES or equivalent

Moderate use (less than 3 hours/month) or seasonal temperatures (50-80°F):
NGK B7ES or equivalent

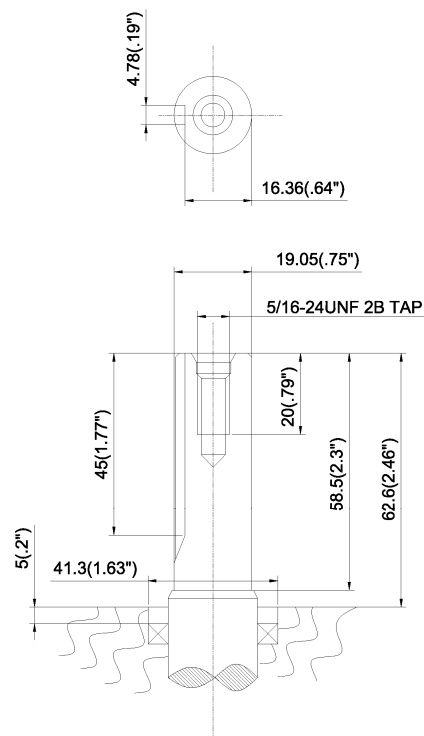
Extreme use (continuous) or hot climates (80-100°F):
NGK B8ES or equivalent

Make certain the spark plug gap is 0.7 - 0.8mm (0.028 - 0.031 in.).

Valve Clearance

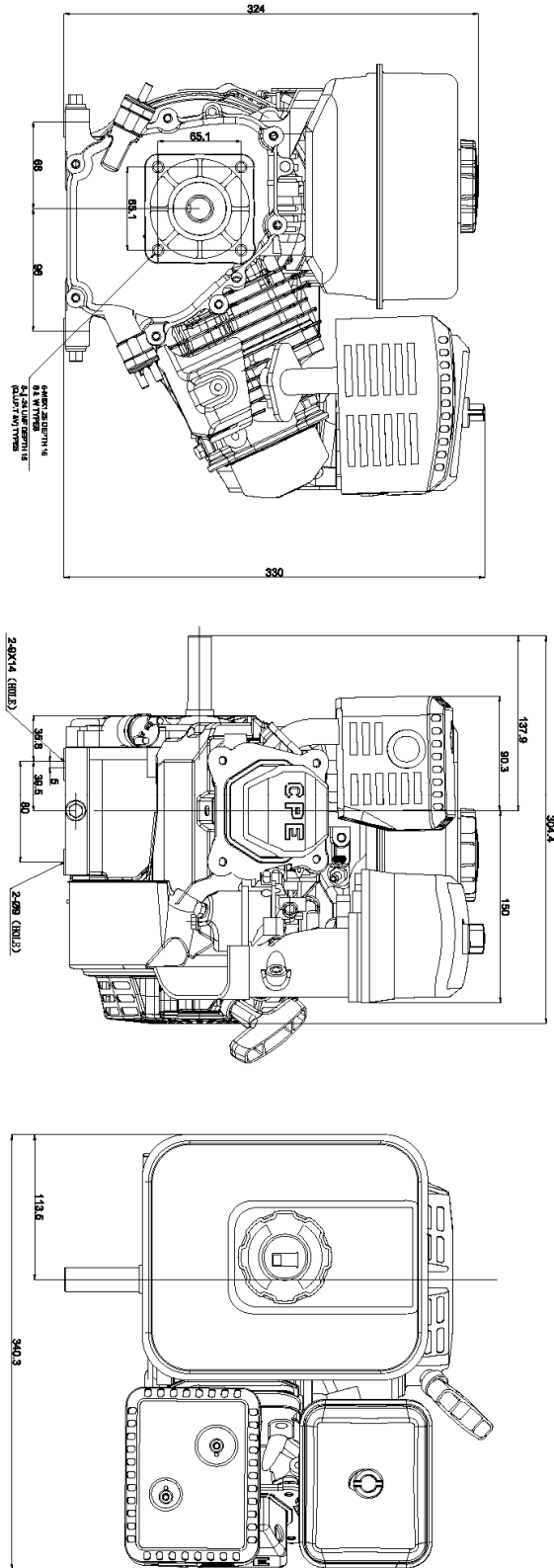
Intake 0.13-0.17mm (0.005 – 0.007 in.)
Exhaust 0.18-0.22mm (0.007 – 0.009 in.)

Keyway Shaft

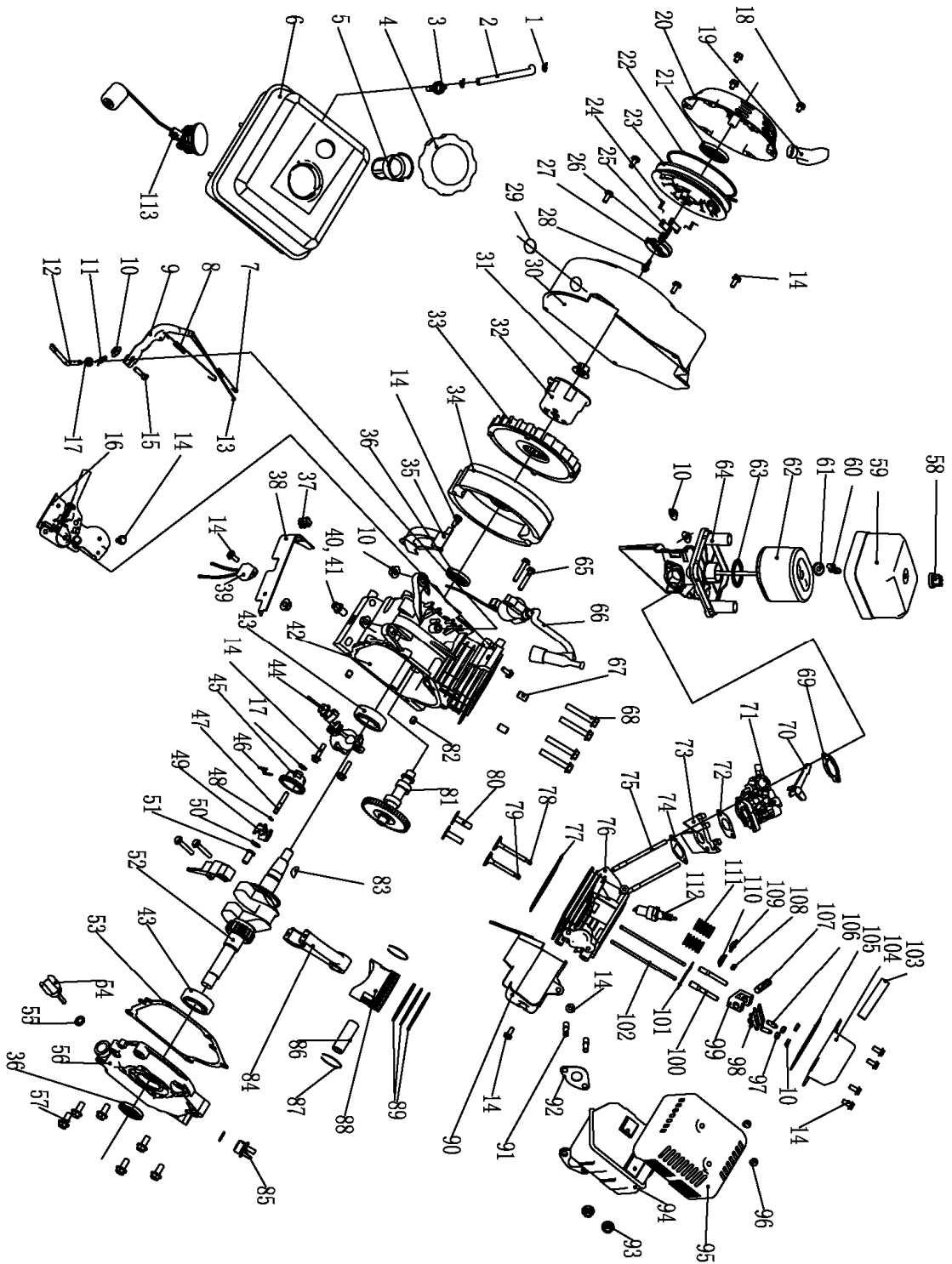


Specifications

Dimensions



Parts Diagram



Specifications

Parts List

No	Part#	Description	Qty
1	ST188FD--1070006A	Clip	2
2	ST160F--1070002-CPE	Tube	1
3	ST160F-1070300-A	Fuel Tank Joint (Metal)	1
4	ST160F--1070100H	Fuel Filler Cap Comp	1
5	ST160F-1070006	Oil filter	1
6	ST160F--1070111-A	Fuel Tank Comp	1
7	ST160F--1110005	Throttle Return Spring	1
8	ST160F--1110007	Governor Spring	1
9	ST160F--1110003	Governor Arm	1
10	GB6177--86	Nut M6	8
11	ST160F--1110008	Lock Pin	1
12	ST160F--1110001	Governor Arm Shaft	1
13	ST160F--1110006	Governor Rod	1
14	GB5789--86	Flange Bolt M6 x 12	15
15	ST160F--1110004	Governor Arm Bolt	1
16	ST160F--1111000	Control Assembly	1
17	ST160F--1110108	Governor Washer	2
18	GB5789--86	Flange Bolt 6 x 8	5
19	ST160F--1061200	Recoil Starter Knob	1
20	ST160F--1061100-D	Recoil Starter Comp	1
21	ST160F--1061005	Recoil Starter Spring	1
22	ST160F--1061009	Recoil Starter Rope	1
23	ST160F--1061001-A	Recoil Starter Reel	1
24	ST188F-1060006	Return Spring	2
25	ST188F-1060005	Starter Ratchet (Metal)	2
26	ST188F-1060004	Ratchet Guide Spring	1
27	ST188F-1060003	Ratchet Guide	1
28	ST188F-1060002	Setting Screw	1
29	139-FMD-1009301	rubber Plug	1
30	ST160F--1080100	Fan Cover Comp	1
31	ST160F--1050010	Nut M14	1
32	ST160F--1060001	Start Hub	1
33	ST160F--1080001	Cooling Fan	1
34	ST160F--1120100	Fly Wheel	1
35	ST160F--1080003	Side Plate	1
36	ST160F--1030100	Oil Seal	2
37	ST168F--1121100-C	Switch	1
38	ST160F-1080004	Diode Base Comp	1
39	ST160F-1126000	Diode Comp	1
40	ST160F--1030003	Drain Plug Bolt	2
41	ST160F--1030004	Drain Bolt Washer	2
42	ST160F-1030012	Crankcase (for USA)	1
43	GB/T--276--94	Radial Ball Bearing 6205	2
44	ST160F-1127000	Oil Level Switch Assembly	1
45	ST160F--1110101	Governor Weight Holder	1
46	ST160F--1110102	Governor Weight Pin	2
47	ST160F--1110103	Governor Holder Clip	1
48	ST160F--1110107	Governor Weight	2
49	ST160F--1110106	Governor Shaft Washer	1
50	ST160F--1110105	Governor Cover	1
51	ST160F-1050001-Q	Crankshaft Comp	1
52	ST160F--1030008-CPE	Case Over Packing (No Asbestos)	1
53	ST160F--1030001-B	Oil Filler Cap Assembly	1
54	ST160F--1030002	Oil Filler Cap Packing	2
55	ST160F-1030007-5/16	Crankcase Cover (for USA)	1
56	GB5789--86	Flange Bolt 8 x 32	6

Specifications

57	GB5789--86	Flange Bolt 6 x 8	5
58	ST168F-1090100	Air Cleaner Cover Nut (plastic)	1
59	ST160F-1090001-E	Air Cleaner Cover	1
60	GB62-88	Air Cleaner Cover Nut	1
61	ST173F-1090100	Air Cleaner Grid	1
62	ST168F-1090100-B	Air Cleaner Element	1
63	ST168F-1090002-B	Air Cleaner Cap Packing	1
64	ST160F-1090004-E	Air Cleaner Elbow Comp	1
65	GB5789--86	Flange Bolt 6 x 25	3
66	ST160F-1123000	Ignition	1
67	152FMD--1001007	Dowel Pin 10 x 16	2
68	GB5789--86	Flange Bolt 8 x 55	4
69	ST160F--1130004	Carburetor Washer	1
70	ST160F--1130100	Choke Level Comp	1
71	ST160F-1130005-CPE	Carburetor Assembly	1
72	ST160F--1130003-CPE	Carburetor Packing (No Asbestos)	1
73	ST160F--1130001	Carburetor Insulator	1
74	ST160F--1130002-CPE	Insulator Packing (No Asbestos)	1
75	ST160F--1010001	Stud Bolt 6 x 113	2
76	ST160F-1010100	Cylinder Head Comp	1
77	ST160F-1030009	Cylinder Head Gasket	1
78	ST160F--1040002	Intake Valve	1
79	ST160F--1040006	Exhaust Valve	1
80	ST160F-1040013	Valve Lifter	2
81	ST160F-1041000	Camshaft Assembly	1
82	139FMD--1003003	Dowel Pin 8 x 14	2
83	GB1099--79	Key	1
84	ST160F--1050100	Connecting Rod Comp	1
85	ST160F--1030001-C	Oil Filler Cap	1
86	ST160F--1050003	Piston Pin	1
87	ST160F--1050004	Piston Pin Clip	2
88	ST160F-1050005	Piston	1
89	ST160F--1050007	First Ring Set	1
	ST160F--1050006	Second Ring Set	1
	ST160F--1050200	Ring Comp	1
90	ST160F--1080002	Shroud Comp	1
91	GB900--88	Stud Bolt	2
92	ST160F-1100001-CPE	Muffler Packing (No Asbestos)	1
93	GB6170--86	Nut M8	2
94	ST160F--1101200-A	Muffler Comp	1
95	ST160F--1101100-1A	Muffler Protector (Chromeplate)	1
96	GB818--85	Screw M5x8	4
97	ST168F--1040026	Locknut	2
98	ST168F--1040022	Exhaust Rocker	2
99	ST160F--1040026	Valve Rocker Arm	1
100	ST168F--1040027	Pivot Bolt	2
101	ST160F-1040028	Push Rod Guide Plate	1
102	ST160F--1040005	Push Rod	2
103	ST160F--1020001	Breather Tube	1
104	ST160F--1020100C	Head Over Comp	1
105	ST160F--1020002A	Head Over Packing	1
106	ST168F--1040024	Rectify Bolt	2
107	ST168F--1040021	Rocker Axes	1
108	ST160F--1040008	Valve Rotator	1
109	ST160F--1040001	Intake Valve Spring Retainer	1
110	ST160F--1040007	Exhaust Valve Spring Retainer	1
111	ST160F--1040003	Valve Spring	2
112	ST160F--1124000	Spark Plug	1
113	ST160F-1071000-C	Fuel Meter Assembly	1

Troubleshooting

Troubleshooting

Problem	Cause	Solution
Engine will not start	No fuel	Add fuel
	Faulty spark plug	Replace spark plug
Engine will not start; Engine starts but runs roughly	Low oil level	Fill crankcase to the proper level Place engine on a flat, level surface
	Choke in the wrong position.	Adjust choke.
	Spark plug wire loose	Attach wire to spark plug
Engine shuts down during operation	Out of fuel	Fill fuel tank
	Low oil level	Fill crankcase to the proper level. Place engine on a flat, level surface
Engine cannot supply enough power or overheating	Insufficient ventilation	Check for air restriction. Move to a well ventilated area

Warranty

CHAMPION POWER EQUIPMENT ONE YEAR LIMITED WARRANTY

Effective September 1, 2006. Replaces all undated warranties and all warranties dated before September 1, 2006.

Warranty Qualifications

Champion Power Equipment (CPE) will register this warranty upon receipt of your Warranty Registration Card and a copy of your sales receipt from one of CPE's retail locations as proof of purchase.

Please submit your warranty registration and your proof of purchase within ten (10) days of the date of purchase.

Repair/Replacement Warranty

CPE warrants to the original purchaser that the mechanical and electrical components will be free of defects in material and workmanship for a period of one (1) year from the original date of purchase (90 days for commercial & industrial use). Transportation charges on product submitted for repair or replacement under this warranty are the sole responsibility of the purchaser. This warranty only applies to the original purchaser and is not transferable.

Do not return the unit to the place of purchase

Contact CPE's Technical Service and CPE will troubleshoot any issue via phone or e-mail. If the problem is not corrected by this method, CPE will, at its option, authorize evaluation, repair or replacement of the defective part or component at a CPE Service Center. CPE will provide you with a case number for warranty service. Please keep it for future reference. Repairs or replacements without prior authorization, or at an unauthorized repair facility, will not be covered by this warranty.

Warranty Exclusions

This warranty does not cover the following repairs and equipment:

Normal Wear

Engines need periodic parts and service to perform well. This warranty does not cover repair when normal use has exhausted the life of a part or the equipment as a whole.

Installation, Use and Maintenance

This warranty will not apply to parts and/or labor if this engine is deemed to have been misused, neglected, involved in an accident, abused, loaded beyond the engine's limits, modified, installed improperly or connected incorrectly to any component. Normal maintenance such as spark plugs, air filters, adjustments, fuel system cleaning and obstruction due to buildup is not covered by this warranty.

Other Exclusions

This warranty excludes:

Cosmetic defects such as paint, decals, etc.
Wear items such as filter elements, o-rings, etc.

Accessory parts such as starting batteries, and storage covers.

Failures due to acts of God and other force majeure events beyond the manufacturer's control.

Problems caused by parts that are not original Champion Power Equipment parts.

Limits of Implied Warranty and Consequential Damage

Champion Power Equipment disclaims any obligation to cover any loss of time, use of this product, freight, or any incidental or consequential claim by anyone from using this engine. THIS WARRANTY IS IN LIEU OF ALL OTHER WARRANTIES, EXPRESS OR IMPLIED, INCLUDING WARRANTIES OF MERCHANTABILITY OR FITNESS FOR A PARTICULAR PURPOSE

A unit provided as an exchange will be subject to the warranty of the original unit. The length of the warranty governing the exchanged unit will remain calculated by

Warranty

reference to the purchase date of the original unit.

This warranty gives you certain legal rights which may change from state to state. Your state may also have other rights you may be entitled to that are not listed within this warranty.

Contact Information

Address

Champion Power Equipment, Inc.
Customer Service
10006 Santa Fe Springs Rd.
Santa Fe Springs, CA 90670

Customer Service

Mon – Fri 8:30 AM – 5:00 PM (PST/PDT)
Toll Free: 1-877-338-0999
Fax no.: 1-562-236-9429

Technical Service

Mon – Fri 8:30 AM – 5:00 PM (PST/PDT)
Toll Free: 1-877-338-0999
tech@championpowerequipment.com

Notes