

CHAMPION

POWER EQUIPMENT™

10006 Santa Fe Springs Road
Santa Fe Springs, CA 90670 USA
Made in China

60001
Rev 60001-20080222



Owner's Manual and Operating Instructions



389 cc OHV Electric Start

GASOLINE ENGINE

Table of Contents

Introduction	1	Troubleshooting	17
Replacement Engine.....	1	Warranty	18
Accessories.....	1	Warranty Qualifications	18
This Booklet.....	1	Repair/Replacement Warranty	18
Manual Conventions	2	Do not return the unit to the place of	
Safety Rules	3	purchase	18
Controls and Features.....	5	Warranty Exclusions.....	18
Replacement Engine.....	5	Normal Wear	18
Assembly	6	Installation, Use and Maintenance.....	18
Add Engine Oil	6	Other Exclusions	18
Add Fuel.....	6	Limits of Implied Warranty and	
Operation	7	Consequential Damage	18
Engine Location.....	7	Contact Information	18
Starting the Engine.....	7	Address.....	18
Stopping the Engine	7	Customer Service	18
Maintenance	8	Technical Service.....	18
Engine Maintenance.....	8	Notes	19
Oil.....	8		
Spark Plugs	8		
Air Filter.....	8		
Cleaning	9		
Adjustments.....	9		
Maintenance Schedule.....	9		
Storage	10		
Engine Storage.....	10		
Specifications	11		
Engine Specifications	11		
Fuel	11		
Oil.....	11		
Spark Plugs	11		
Valve Clearance	11		
Keyway Shaft	11		
Dimensions.....	12		
Parts Diagram.....	13		
Parts List.....	14		

Introduction

Congratulations on your purchase of a Champion Power Equipment engine. CPE designs and builds engines to strict specifications. With proper use and maintenance, this engine will bring years of satisfying service.

Replacement Engine

This unit is a gasoline driven, key-way shaft replacement engine. It is designed to supply power for air compressors, pumps, pressure washers, reel-type lawn mowers, go-carts, agricultural and construction equipment and other pulley-style applications.

Accessories

Champion Power Equipment manufactures and sells accessories designed to help you get the most from your purchase. To find out more, please visit our web site at

www.championpowerequipment.com

This Booklet

Every effort has been made to ensure the accuracy and completeness of the information in this manual. We reserve the right to change, alter and/or improve the product and this document at any time without prior notice.

Record the model and serial numbers as well as date and place of purchase for future reference. Have this information available when ordering parts and when making technical or warranty inquiries.

Champion Power Equipment Support
1-877 338-0999
Model Number
60001
Serial Number
Date of Purchase
Purchase Location

Manual Conventions

Manual Conventions

This manual uses the following symbols to help differentiate between different kinds of information. The safety symbol is used with a key word to alert you to potential hazards in operating and owning power equipment.

Follow all safety messages to avoid or reduce the risk of serious injury or death.

DANGER

DANGER indicates an imminently hazardous situation which, if not avoided, *will* result in death or serious injury.

WARNING

WARNING indicates a potentially hazardous situation which, if not avoided, *could* result in death or serious injury.

CAUTION

CAUTION indicates a potentially hazardous situation which, if not avoided, *may* result in minor or moderate injury.

CAUTION

CAUTION used without the safety alert symbol indicates a potentially hazardous situation which, if not avoided, *may* result in property damage.

NOTE

If you have questions regarding your engine, we can help. Please call our help line at 1-877 338-0999.

Safety Rules

WARNING

Read this manual thoroughly before operating your engine. Failure to follow instructions could result in serious injury or death.

WARNING

The engine exhaust from this product contains chemicals known to the state of California to cause cancer, birth defects, or other reproductive harm.

DANGER

Engine exhaust contains carbon monoxide, a colorless, odorless, poison gas. Breathing carbon monoxide will cause nausea, dizziness, fainting or death.

Operate engine outdoors only in a well ventilated area.
DO NOT operate the engine inside any building, enclosure or compartment.
DO NOT allow exhaust fumes to enter a confined area through windows, doors, vents or other openings.

DANGER

Rotating parts can entangle hands, feet, hair, clothing and/or accessories.

Traumatic amputation or severe laceration can result.

Keep hands and feet away from rotating parts.
Tie up long hair and remove jewelry.
Operate equipment with guards in place.
DO NOT wear loose-fitting clothing, dangling drawstrings or items that could become caught.

WARNING

Sparks can result in fire or electrical shock.

When servicing the engine:

Disconnect the spark plug wire and place it where it cannot contact the plug.
DO NOT check for spark with the plug removed.
Use only approved spark plug testers.

WARNING

Running engines produce heat.
Severe burns can occur on contact.
Combustible material can catch fire on contact.

DO NOT touch hot surfaces.
Avoid contact with hot exhaust gases.
Allow equipment to cool before touching.
Maintain at least three feet of clearance on all sides to ensure adequate cooling.
Maintain at least five feet of clearance from combustible materials.

Safety Rules

DANGER

Fuel and fuel vapors are highly flammable and extremely explosive.
Fire or explosion can cause severe burns or death.

Unintentional startup can result in entanglement, traumatic amputation or laceration.

When adding or removing fuel

Turn the engine off and let it cool for at least two minutes before removing the fuel cap. Loosen the cap slowly to relieve pressure in the tank. Only fill or drain fuel outdoors in a well-ventilated area.

DO NOT overfill the fuel tank.

Always keep fuel away from sparks, open flames, pilot lights, heat and other sources of ignition.

DO NOT light or smoke cigarettes.

When starting the engine

DO NOT attempt to start a damaged engine.

Make certain that the gas cap, air filter, spark plug, fuel lines and exhaust system are properly in place.

Allow spilled fuel to evaporate fully before attempting to start the engine.

Make certain that the engine is resting firmly on level ground.

When transporting or servicing the engine:

Make certain that the fuel shutoff valve is in the off position and the fuel tank is empty.

Disconnect the spark plug wire.

When storing the engine:

Store away from sparks, open flames, pilot lights, heat and other sources of ignition.

WARNING

Rapid retraction of the starter cord will pull hand and arm towards the engine faster than you can let go.

Unintentional startup can result in entanglement, traumatic amputation or laceration.

Broken bones, fractures, bruises or sprains could result.

When starting engine, pull the starter cord slowly until resistance is felt and then pull rapidly to avoid kickback.

DO NOT start or stop the engine with electrical devices plugged in.

CAUTION

Improper treatment or use of the engine can damage it, shorten its life and void your warranty.

Use the engine only for intended uses.

Operate only on level surfaces.

DO NOT expose engine to excessive moisture, dust, or dirt.

DO NOT allow any material to block the cooling slots.

DO NOT use the engine if:

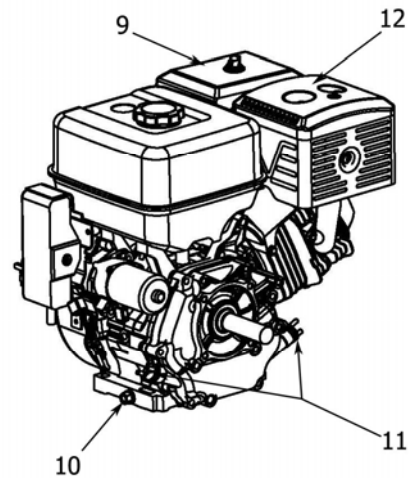
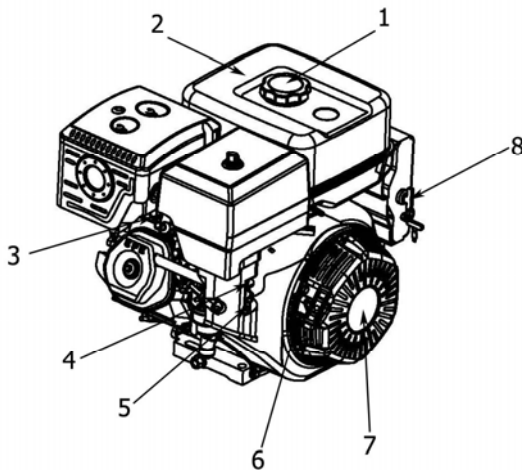
Equipment sparks, smokes or emits flames

Equipment vibrates excessively

Controls and Features

Read this owner's manual before operating your engine. Familiarize yourself with the location and function of the controls and features. Save this manual for future reference.

Replacement Engine



(1) Fuel Filler Cap – venting gas cap.

(2) Fuel Tank –1.79 gallon capacity fuel tank.

(3) Spark Plug – $\frac{3}{4}$ " long neck

(4) Choke – Used to start the engine

(5) Fuel Valve Lever – Turn this valve to the "On" position to supply fuel to the engine.

(6) Starter Grip – rubber comfort grip for recoil starter.

(7) Recoil Starter – Used to start the engine

(8) Electric start – Insert ignition key and turn to start engine

(9) Air Cleaner – Protects the engine by filtering dust and debris from the intake air.

(10) Oil Drain Plug – Used to drain the oil

(11) Oil Filler Cap – Check and fill engine oil level.

(12) Muffler – Full-size muffler for sound abatement

Assembly

Assembly

This unit ships from our factory without oil. It must be properly serviced with fuel and oil before operation.

Add Engine Oil

CAUTION

DO NOT attempt to crank or start the engine before it has been properly filled with the recommended type and amount of oil. Damage to the generator as a result of failure to follow these instructions will void your warranty.

1. Place the engine on a flat, level surface.
2. Remove oil fill cap/dipstick to add oil.
3. Add 1.16 qt (1.1L) of oil and replace oil fill cap/dipstick.
4. Check engine oil level daily and add as needed.

CAUTION

The engine is equipped with a low-oil-shutoff and the will stop when the oil level in the crankcase falls below the threshold level.

NOTE

Check oil often during the break-in period. Refer to the Maintenance section for recommended service intervals.

Add Fuel

1. Use clean, fresh, regular unleaded fuel with a minimum octane rating of 85.
2. DO NOT mix oil with fuel.
3. Clean the area around the fuel cap.
4. Remove the fuel cap
5. Slowly add fuel to the tank. DO NOT overfill. Allow approximately ¼ inch of space for fuel expansion.
6. Screw on the fuel cap and wipe away any spilled fuel.

CAUTION

Use regular unleaded gasoline with a minimum octane rating of 85.

Do not mix oil and gasoline.
Fill tank to approximately ¼" below the top of the tank to allow for fuel expansion.
DO NOT fill fuel tank indoors.
DO NOT fill fuel tank when the engine is running or hot.
DO NOT overfill the fuel tank.
DO NOT light cigarettes or smoke when filling the fuel tank.

Operation

Engine Location

Place the engine in a well-ventilated area. DO NOT place the engine near vents or intakes where exhaust fumes could be drawn into occupied or confined spaces. Carefully consider wind and air currents when positioning engine.

Starting the Engine

1. Make certain the engine is on a flat, level surface.
2. Check the oil level. Add oil as necessary.
3. Turn the fuel valve to the "On" position.
4. Move the choke lever to the "Choke" position.
5. Turn the key in the electronic ignition
6. As engine warms up, move the choke lever to "Run".

NOTE

If the engine starts but does not run, make certain that it is on a flat, level surface. The engine is equipped with a low oil sensor that will prevent the engine from running when the oil level falls below a critical threshold.

Stopping the Engine

1. Let the engine run at no-load for several minutes to stabilize internal temperatures.
2. Turn the ignition switch to the "Off" position.
3. Turn the fuel valve to the "Off" position.

Maintenance

Maintenance

The owner/operator is responsible for all periodic maintenance.

WARNING

Never operate a damaged or defective engine.

WARNING

Improper maintenance will void your warranty.

Complete all scheduled maintenance in a timely manner. Correct any issue before operating the engine.

NOTE

For service or parts assistance, contact our help line at 1-877 338-0999.

Engine Maintenance

To prevent accidental starting, remove and ground spark plug wire before performing any service.

Oil

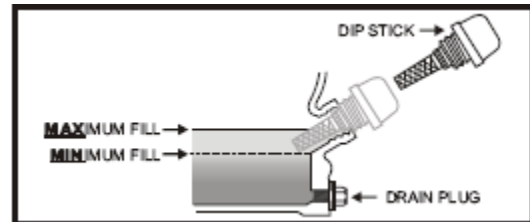
Change oil when the engine is warm. Refer to the oil specification to select the proper grade of oil for your operating environment.

CAUTION

The engine ships from the factory without oil. Before pulling the recoil start or starting the engine, fill with oil. Do not overfill.

1. Remove the oil drain plug with a 15 mm socket and extension.
2. Allow the oil to drain completely.
3. Replace the drain plug.
4. Remove oil fill cap/dipstick to add oil.
5. Add 1.16 qt (1.1L) of oil and replace oil fill cap/dipstick.

6. Dispose of used oil at an approved waste management facility.



Spark Plugs

1. Remove the spark plug cable from the spark plug.
2. Use the spark plug tool that shipped with your engine to remove the plug.
3. Inspect the electrode on the plug. It must be clean and not worn to produce the spark required for ignition.
4. Make certain the spark plug gap is 0.7 - 0.8mm (0.028 - 0.031 in.).
5. Refer to the spark plug recommendation chart when replacing the plug.
6. Carefully thread the plug into the engine.
7. Use the spark plug tool to firmly install the plug.
8. Attach the spark plug wire to the plug.

Air Filter

1. Remove the snap-on cover holding the air filter to the assembly.
2. Remove the foam element.
3. Wash in liquid detergent and water. Squeeze thoroughly dry in a clean cloth.
4. Saturate in clean engine oil.
5. Squeeze in a clean, absorbent cloth to remove all excess oil.
6. Place the filter in the assembly.
7. Reattach the air filter cover and snap in place.

 **CAUTION**

A clogged spark arrester will dramatically reduce engine performance.

Cleaning

 **CAUTION**

DO NOT spray engine with water.

Water can contaminate the fuel system.

Use a damp cloth to clean exterior surfaces of the engine.

Use a soft bristle brush to remove dirt and oil.

Use an air compressor (25 PSI) to clear dirt and debris from the engine.

Adjustments

The air-fuel mixture is not adjustable. CPE recommends that you contact our service line at 1-877- 338-0999 for all other service and/or adjustment needs.

Maintenance Schedule

Follow the service intervals indicated in the schedule below.

Service your engine more frequently when operating in adverse conditions.

Contact our help line at 1-877- 338-0999 to locate the nearest Champion Power Equipment certified service dealer for your engine maintenance needs.

Every 8 hours or daily
Check oil level
Clean around air intake and muffler
First 5 Hours
Change oil
First 10 hours
Check/Adjust Valve Clearance *
Every 50 hours or every season
Clean air filter
Change oil if operating under heavy load or in hot environments
Every 100 hours or every season
Change oil
Clean/Adjust spark plug
Check/Adjust valve clearance *
Clean spark arrester
Clean fuel tank and filter *
Every 3 years
Replace fuel line

* To be performed by knowledgeable, experienced owners or Champion Power Equipment certified service dealers

Storage

Engines stored for over 30 days need to be drained of fuel to prevent gum from forming in the fuel system, carburetor components and hoses. For long term storage, please follow these guidelines.

Engine Storage

1. Allow the engine to cool completely before storage.

2. Clean the engine according to the instructions in the Maintenance section.
3. Drain all fuel completely from the fuel line and carburetor to prevent gum from forming.
4. Add a fuel stabilizer into the fuel tank.
5. Change the oil.
6. Remove the spark plug and pour about $\frac{1}{2}$ ounce of oil into the cylinder. Crank the engine slowly to distribute the oil and lubricate the cylinder. Reattach the spark plug

Specifications

Engine Specifications

Engine	389 cc OHV CPE
	Single Cylinder
	4-Stroke
	Air-cooled

NOTE

The gross horsepower of this engine was laboratory-rated at our factory in accordance with SAE J1940 as configured to meet safety, emissions, and operating requirements. The actual engine horsepower on this class of engine may be significantly lower..

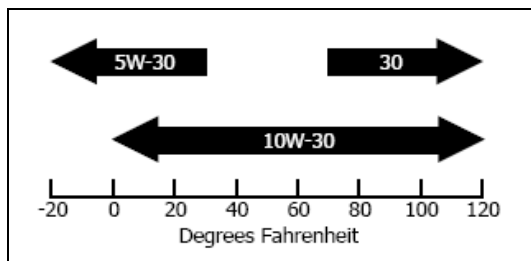
PTO Rotation	Counterclockwise
Ignition Mode	TCI (transistorized)
Displacement	389 cc
Torque (max)	1.62 ft. lbs. at 3000 RPM
Compression	8.5:1
Horizontal Shaft	1" x 3"
	2.5 cm x 8.3 cm
End Hole	Tapped 5/16"
	24 UNF
Fuel Capacity	1.79 gallons (6.8L)
Weight	76.3 lbs. (34.6kg)
Height	17.5 inches (44.5cm)
Width	15.9 inches (40.5 cm)
Length	19.8 inches (50.2 cm)

Fuel

Fuel capacity is 1.79 US gallons (6.8 L). Use regular unleaded gasoline with a minimum octane rating of 85.

Oil

Oil capacity is 1.16 qt (1.1 L).



Spark Plugs

Your engine comes equipped with a 3/4" long reach plug (14mm).

Intermittent use (less than 1 hour/month) or colder temperatures (below 60°F):
NGK B6ES or equivalent

Moderate use (less than 3 hours/month) or seasonal temperatures (50-80°F):
NGK B7ES or equivalent

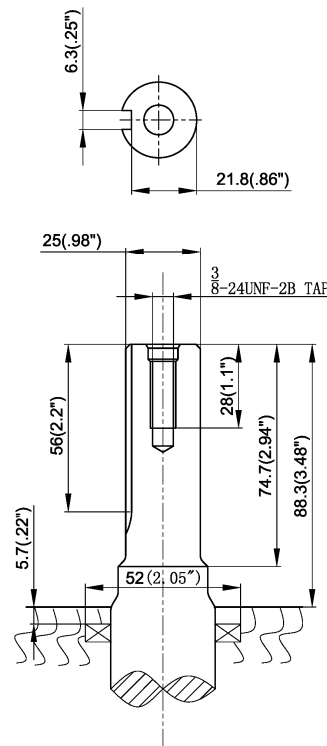
Extreme use (continuous) or hot climates (80-100°F):
NGK B8ES or equivalent

Make certain the spark plug gap is 0.7 - 0.8mm (0.028 - 0.031 in.).

Valve Clearance

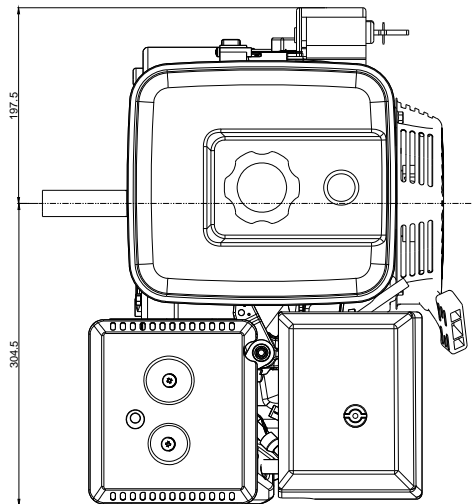
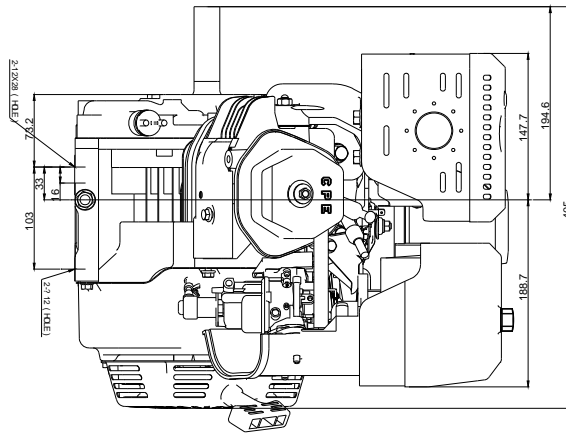
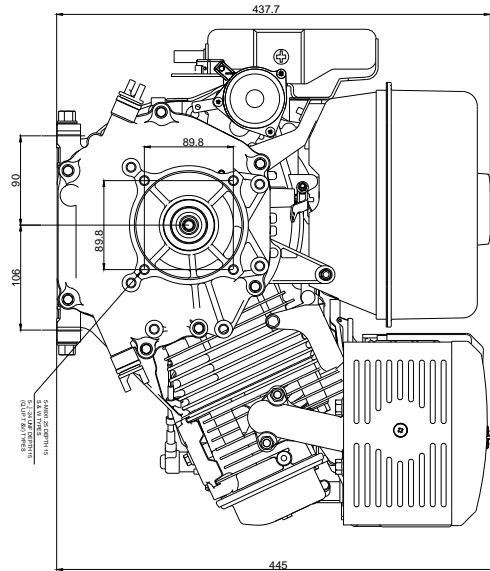
Intake 0.10-0.12mm (0.004 - 0.005 in.)
Exhaust 0.10-0.12mm (0.004 - 0.005 in.)

Keyway Shaft

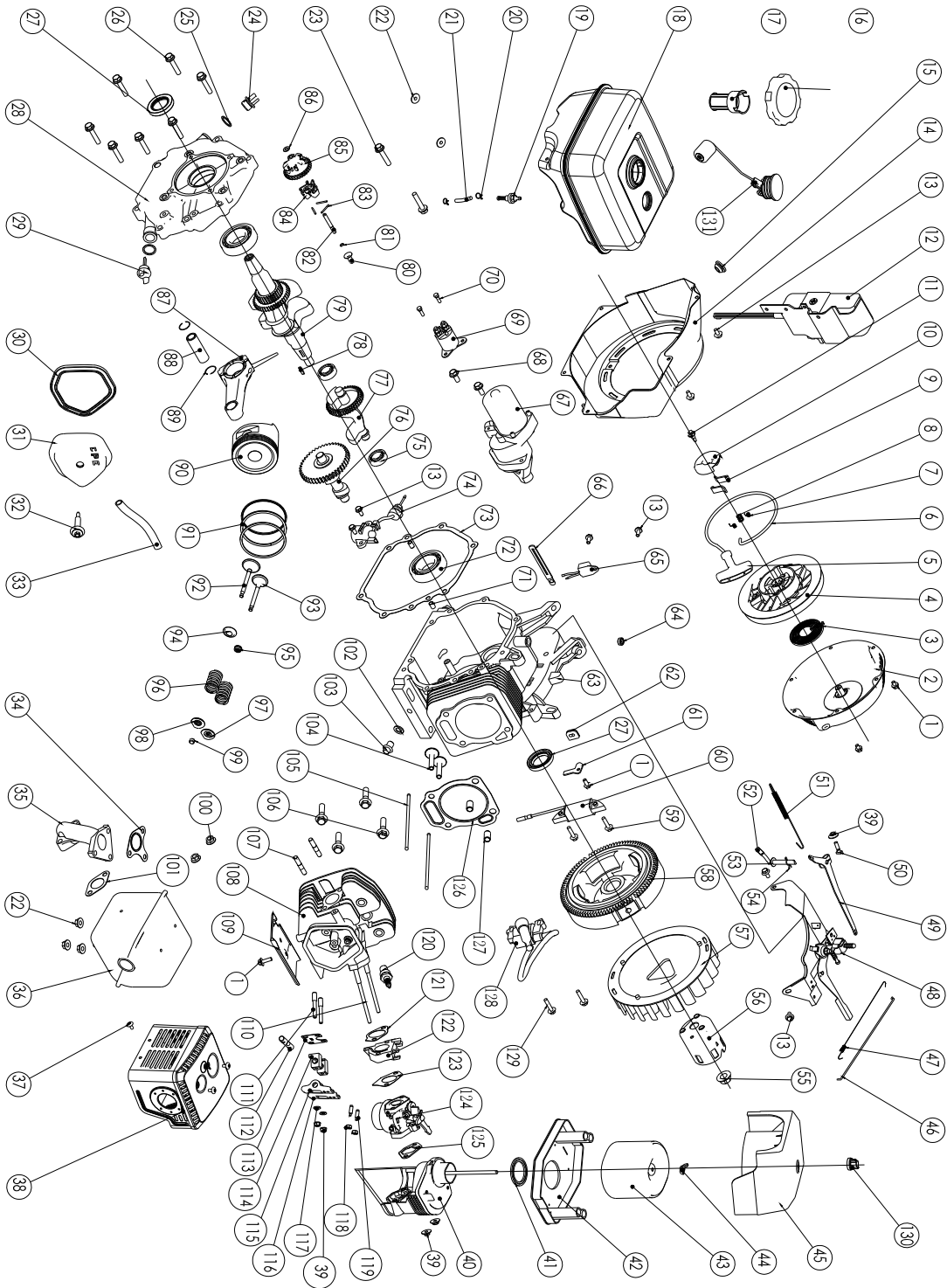


Specifications

Dimensions



Parts Diagram



Specifications

Parts List

No	Part#	Description	Qty
1	GB5789-86	Flange Bolt M6×8	5
2	ST188F-1060100-C	Recoil Starter Case Comp	1
3	ST188F-1060009	Starter Return Spring	1
4	ST188F-1060008	Recoil Starter Pulley	1
5	ST160F-1061006	Recoil Starter Knob	1
6	ST188F-1060007	Recoil Starter Rope	1
7	ST188F-1060006	Ratchet Spring	2
8	ST188F-1060004	Ratchet Guide Spring	1
9	ST188F-1060005	Ratchet Starter	2
10	ST188F-1060003	Ratchet Guide	1
11	ST188F-1060002	Ratchet Guide Bolt	1
12	ST168F-1090100	Control On/Off	1
13	GB5789-86	Flange Bolt M6×12	7
14	ST188F-1080100	Fan Corer Comp	1
15	139-FMD-1009301	Rubber Plug	1
16	ST160F-1070100	Fuel Filler Cap Comp	1
17	ST160F-1070006	Oil Filter	1
18	ST188F-1070111	Fuel Tank Comp	1
19	ST160F-1070300-A	Fuel Tank Joint (Metal)	1
20	ST188FD--1070006A	Clip	2
21	ST188F-1070001-CPE	Tube	1
22	GB6177-86	Nut M8	2
23	GB5789-86	Flange Bolt M8×25	4
24	ST160F--1030001-C	Oil Filler Cap	1
25	ST160F-1030002	Oil Filler Cap Packing	2
26	GB5789-86	Flange Bolt M8×40	7
27	ST188F-1030200	Oil Seal	2
28	ST188F-1030011-5/16	Crankcase Cover 5/16-24UNF	1
29	ST188F-1030001-B	Oil Filler Cap Assembly	1
30	ST188F-1020003	Head Over Packing	1
31	ST188F-1020100-CPE	Head Cover Comp	1
32	ST188F-1020006	Head Cover Bolt Comp	1
33	ST188F-1020002	Tube	1
34	ST188FD-1100001-CPE	Ex Pipe Gasket (No Asbestos)	1
35	ST188F-1100002	Ex Pipe	1
36	ST188F-1101200	Muffler Comp	1
37	GB823-88	Tapping Screen M5×10	4
38	ST188F-1101101	Muffler Protector (Chromeplate)	1
39	GB6177-86	Nut M6	4
40	ST188F-1090100-A	Air Clean Elbow Comp	1
41	ST188F-1090001	Elbow Packing	1
42	ST188F-1090002	Silencer Nose	1
43	ST188F-1090004	Air Clean Element	1
44	ST188F-1090003-A	Air Clean Cover Nut	2
45	ST188F-1090001	Air Clean Cover	1
46	ST188F-1110002	Governor Rod	1
47	ST188F-1110001	Throttle Return Spring	1
48	ST188F-1080200	Control Assembly	1
49	ST188F-1110006	Governor Arm	1
50	ST160F-1110004	Governor Arm Bolt	1
51	ST188F-1110004	Governor Spring	1
52	ST188F-1110003	Cover Arm Shaft	1

Specifications

No	Part#	Description	Qty
53	ST188F-1110005	Washer 8.2×17×0.8	1
54	ST188F-1110007	Pin Clip	1
55	ST188F-1050006	Special Nut	1
56	ST188F-1060001	Starter Pulley Comp	1
57	ST188F-1080002	Cooling Fan	1
58	ST188F-1121000	Flywheel Comp	1
59	GB5789-86	Flange Bolt M6 x 29	1
60	ST188F-1123000	Electric Coil	1
61	ST188F-1030002	Wire Flat	1
62	ST188F-1030012	Packing	1
63	ST188F-1030006	Crankcase Assembly	1
64	ST188F-1030100	Oil Seal	1
65	ST160F-1126000	Diode Comp	1
66	S188F-1030001	Wire Clip	1
67	ST188F-1125000	Start Motor	1
68	ST188F-GB5789-86	Flange Bolt M8 x 35	2
69	ST188F-1126000	Relay	1
70	GB29.2-88	Flange Bolt M5 x 20	2
71	139FMD-1003003	Dowel Pin 8×14	2
72	GB/T276-94 6207/C3	Radial Ball Bearing 6207/C3	2
73	ST188F-1030010-CPE	Case Cover Packing (No Asbestos)	1
74	ST188F-1127000	Oil Level Switch Assembly	1
75	GB/T276-94	Radial Ball Bearing 6202/P6	2
76	ST188F-1041000	Camshaft Comp	1
77	ST188F-1050303	Balance Gear	1
78	ST188F-1050304	Key	1
79	ST188F-1050301-U	Crankshaft Comp	1
80	ST188F-1110008	Governor Slider	1
81	ST160F-1110103	Governor Shaft Clip	1
82	ST188F-1110009	Governor Shaft	1
83	ST188F-1110102	Governor Weight Pin	3
84	ST188F-1110103	Governor Weight	3
85	ST188F-1110101	Governor Weight Holder	1
86	ST160F-1110108	Washer	1
87	ST188F-1050200	Connecting Rod Assembly	1
88	ST188F-1050005	Piston Pin	1
89	ST188F-1050004	Piston Pin Clip	2
90	ST188F-1050001	Piston	1
91	ST188F-1050100	Oil Seal Set Comp	1
	ST188F-1050003	Second Ring Set	1
	ST188F-1050002	First Ring Set	1
92	ST188F-1040011	Ex, Valve	1
93	ST188F-1040003	IN, Valve	1
94	ST188F-1040006	Valve Spring Washer	1
95	ST188F-1040004	Valve Oil	1
96	ST188F-1040007	Valve Spring	2
97	ST188F-1040002	IN , Valve Spring Retainer	1
98	ST188F-1040008	Ex , Valve Spring Retainer	1
99	ST188F-1040009	Valve Rotator	1
100	GB41-86	Nut M8	2
101	ST188F-1100100-CPE	Muffler Packing (No Asbestos)	1
102	139FMD-1003102	Drain Plug Washer	2
103	139FMD-1003101	Drain Plug Bolt	2
104	ST188F-1040012	Valve Lifter	2

Specifications

No	Part#	Description	Qty
105	ST188F-1040010- II	Push rod	2
106	ST188F-1030009	Bolt	4
107	ST188F-1010001	Bolt	2
108	ST188F-1011000	Head comp	1
109	ST188F-1080001	Shroud	1
110	ST188F-1010002	Bolt	2
111	ST168F--1040027	Pivot bolt	2
112	ST188F-1040021	Rocker axes	1
113	ST188F-1040028	Push rod guide plate	1
114	ST188F-1040026	Valve rocker arm	1
115	ST188F-1040023	Exhaust valve exhaust rocker	1
116	ST188F-1040005	Intake valve exhaust rocker	1
117	GB97.1-85	gasket 6	2
118	ST160F-11040025	Pivot adjusting nut	2
119	ST160F-11040024	Rocker arm Bolt	2
120	NHSP LA F5TC	Spark plug	1
121	ST188FD-1130003-CPE	Carburetor insulator packing (no asbestos)	1
122	ST188F-1130001	Carburetor insulator	1
123	ST188FD-1130002-CPE	Carburetor packing (no asbestos)	1
124	ST188F-1131000-CPE	Carburetor assy	1
125	ST188F-1130100	Air cleaner packing	1
126	ST188F-1030008	Cylinder head casket	1
127	ST188F-1030013	Dowel pin	2
128	ST188F-1122000	ignition	1
129	GB5789-86	Bolt M6×29	2
130	ST168F-1090100	Air cleaner cover nut(plastic)	1
131	ST173F-1071000-E	Fuel meter assy	1

Troubleshooting

Problem	Cause	Solution
Engine will not start	No fuel	Add fuel
	Faulty spark plug	Replace spark plug
Engine will not start; Engine starts but runs roughly	Low oil level	Fill crankcase to the proper level Place engine on a flat, level surface
	Choke in the wrong position.	Adjust choke.
	Spark plug wire loose	Attach wire to spark plug
Engine shuts down during operation	Out of fuel	Fill fuel tank
	Low oil level	Fill crankcase to the proper level. Place engine on a flat, level surface
Engine cannot supply enough power or overheating	Insufficient ventilation	Check for air restriction. Move to a well ventilated area

Warranty

Warranty

CHAMPION POWER EQUIPMENT ONE YEAR LIMITED WARRANTY

Effective September 1, 2006. Replaces all undated warranties and all warranties dated before September 1, 2006.

Warranty Qualifications

Champion Power Equipment (CPE) will register this warranty upon receipt of your Warranty Registration Card and a copy of your sales receipt from one of CPE's retail locations as proof of purchase.

Please submit your warranty registration and your proof of purchase within ten (10) days of the date of purchase.

Repair/Replacement Warranty

CPE warrants to the original purchaser that the mechanical and electrical components will be free of defects in material and workmanship for a period of one (1) year from the original date of purchase (90 days for commercial & industrial use). Transportation charges on product submitted for repair or replacement under this warranty are the sole responsibility of the purchaser. This warranty only applies to the original purchaser and is not transferable.

Do not return the unit to the place of purchase

Contact CPE's Technical Service and CPE will troubleshoot any issue via phone or e-mail. If the problem is not corrected by this method, CPE will, at its option, authorize evaluation, repair or replacement of the defective part or component at a CPE Service Center. CPE will provide you with a case number for warranty service. Please keep it for future reference. Repairs or replacements without prior authorization, or at an unauthorized repair facility, will not be covered by this warranty.

Warranty Exclusions

This warranty does not cover the following repairs and equipment:

Normal Wear

Engines need periodic parts and service to perform well. This warranty does not cover repair when normal use has exhausted the life of a part or the equipment as a whole.

Installation, Use and Maintenance

This warranty will not apply to parts and/or labor if this engine is deemed to have been misused, neglected, involved in an accident, abused, loaded beyond the engine's limits, modified, installed

improperly or connected incorrectly to any component. Normal maintenance such as spark plugs, air filters, adjustments, fuel system cleaning and obstruction due to buildup is not covered by this warranty.

Other Exclusions

This warranty excludes:

Cosmetic defects such as paint, decals, etc.
Wear items such as filter elements, o-rings, etc.
Accessory parts such as starting batteries, and storage covers.

Failures due to acts of God and other force majeure events beyond the manufacturer's control.

Problems cause by parts that are not original Champion Power Equipment parts.

Limits of Implied Warranty and Consequential Damage

Champion Power Equipment disclaims any obligation to cover any loss of time, use of this product, freight, or any incidental or consequential claim by anyone from using this engine. THIS WARRANTY IS IN LIEU OF ALL OTHER WARRANTIES, EXPRESS OR IMPLIED, INCLUDING WARRANTIES OF MERCHANTABILITY OR FITNESS FOR A PARTICULAR PURPOSE

A unit provided as an exchange will be subject to the warranty of the original unit. The length of the warranty governing the exchanged unit will remain calculated by reference to the purchase date of the original unit.

This warranty gives you certain legal rights which may change from state to state. Your state may also have other rights you may be entitled to that are not listed within this warranty.

Contact Information

Address

Champion Power Equipment, Inc.
Customer Service
10006 Santa Fe Springs Rd.
Santa Fe Springs, CA 90670

Customer Service

Mon – Fri 8:30 AM – 5:00 PM (PST/PDT)
Toll Free: 1-877-338-0999
Fax no.: 1-562-236-9429

Technical Service

Mon – Fri 8:30 AM – 5:00 PM (PST/PDT)
Toll Free: 1-877-338-0999
tech@championpowerequipment.com

Notes