

# CHAMPION

POWER EQUIPMENT™

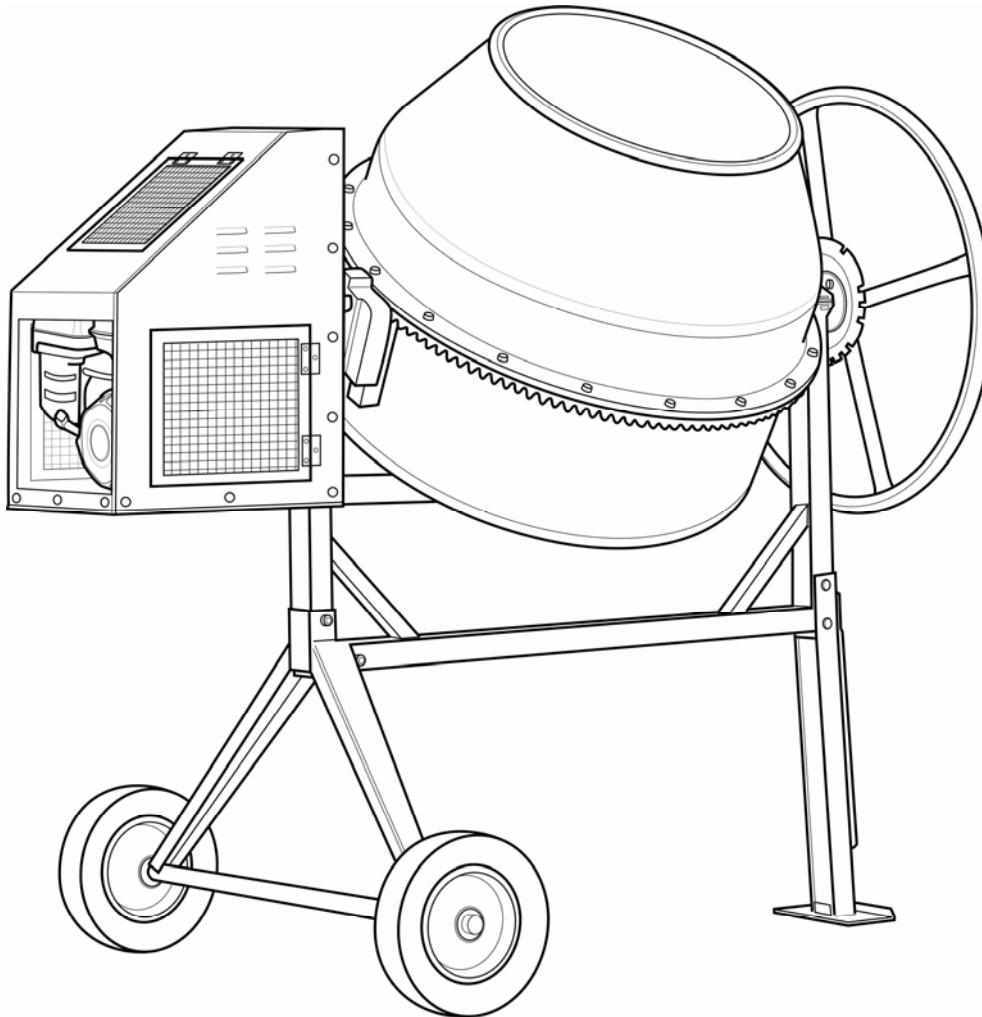
54051

Rev 54051-20090513



10006 Santa Fe Springs Road  
Santa Fe Springs, CA 90670 USA  
Made in China

## Owner's Manual and Operating Instructions



**7 CUBIC FEET**

**CEMENT MIXER**



# Table of Contents

---

<b>Introduction .....</b>	<b>1</b>	<b>Storage .....</b>	<b>13</b>
Cement Mixer .....	1	Cement Mixer Storage .....	13
Accessories.....	1	Engine Storage.....	13
This Booklet.....	1	<b>Specifications .....</b>	<b>14</b>
<b>Manual Conventions .....</b>	<b>2</b>	Engine Specifications.....	14
<b>Safety Rules .....</b>	<b>3</b>	Cement Mixer Specifications.....	14
<b>Controls and Features.....</b>	<b>5</b>	Fuel.....	14
Cement Mixer .....	5	Oil.....	14
<b>Assembly .....</b>	<b>6</b>	Spark Plugs .....	14
Open Shipping Crate .....	6	Valve Clearance.....	14
Step 1 – Wheels.....	6	Cement Mixer Parts Diagram .....	15
Step 2 – Support Brackets .....	6	Cement Mixer Parts List .....	16
Step 3 – Tank, U bracket .....	6	Engine Parts Diagram.....	18
Step 4 – Tank, top.....	7	Engine Parts List.....	19
Step 5 – Mixing paddle, Hand wheel, Locking rod foot pedal.....	7	<b>Troubleshooting .....</b>	<b>22</b>
Step 6 – Attach Engine Box.....	7	<b>Warranty .....</b>	<b>23</b>
Add Engine Oil .....	8	Warranty Qualifications .....	23
Add Engine Fuel .....	8	Repair/Replacement Warranty .....	23
<b>Operation .....</b>	<b>9</b>	Do not return the unit to the place of purchase .....	23
Cement Mixer Location.....	9	Warranty Exclusions.....	23
Starting the Engine.....	9	Normal Wear .....	23
Stopping the Engine .....	9	Installation, Use and Maintenance.....	23
Cement Mixer Operation.....	9	Other Exclusions .....	23
<b>Maintenance .....</b>	<b>11</b>	Limits of Implied Warranty and Consequential Damage .....	23
Wash Out .....	11	Contact Information .....	23
Engine Maintenance.....	11	Address.....	23
Oil.....	11	Customer Service .....	23
Spark Plugs .....	11	Technical Service.....	23
Air Filter.....	12	<b>Notes .....</b>	<b>24</b>
<i>Cement Mixer and Engine Cleaning.</i>	12		
Maintenance Schedule.....	12		

---



## Introduction

Congratulations on your purchase of a Champion Power Equipment Gasoline Cement Mixer. CPE designs and builds Gasoline Cement Mixers to strict specifications. With proper use and maintenance, this Gasoline Cement Mixer will bring years of satisfying service.

This Owner's Manual contains important safety instructions and information. **SAVE THESE INSTRUCTIONS FOR FUTURE REFERENCE.**

### **Cement Mixer**

This unit is a gasoline engine driven Cement Mixer. It is designed to mix cement.

Record the model and serial numbers as well as date and place of purchase for future reference. Have this information available when ordering parts and when making technical or warranty inquiries.

<b>Champion Power Equipment Support</b>
1-877-338-0999
<b>Model Number</b>
54051
<b>Serial Number</b>
<b>Date of Purchase</b>
<b>Purchase Location</b>

### **Accessories**

Champion Power Equipment manufactures and sells accessories designed to help you get the most from your purchase. To find out more please visit our web site at

[www.championpowerequipment.com](http://www.championpowerequipment.com)

### **This Booklet**

Every effort has been made to ensure the accuracy and completeness of the information in this manual. We reserve the right to change, alter and/or improve the product and this document at any time without prior notice.

# Manual Conventions

---

## Manual Conventions

This manual uses the following symbols to help differentiate between different kinds of information. The safety symbol is used with a key word to alert you to potential hazards in operating and owning power equipment.

Follow all safety messages to avoid or reduce the risk of serious injury or death.



### DANGER

DANGER indicates an imminently hazardous situation which, if not avoided, *will* result in death or serious injury.



### WARNING

WARNING indicates a potentially hazardous situation which, if not avoided, *could* result in death or serious injury.



### CAUTION

CAUTION indicates a potentially hazardous situation which, if not avoided, *may* result in minor or moderate injury.

### CAUTION

CAUTION used without the safety alert symbol indicates a potentially hazardous situation which, if not avoided, *may* result in property damage.



### NOTE

If you have questions regarding your Gasoline Cement Mixer, we can help. Please call our help line at 1-877-338-0999.

## Safety Rules

### WARNING

Read this manual thoroughly before operating your Gasoline Cement Mixer. Failure to follow instructions could result in serious injury or death.

### WARNING

The engine exhaust from this product contains chemicals known to the state of California to cause cancer, birth defects, or other reproductive harm.

### DANGER

Engine exhaust contains carbon monoxide, a colorless, odorless, poison gas. Breathing carbon monoxide will cause nausea, dizziness, fainting or death. If you start to feel dizzy or weak, get to fresh air immediately.

Operate Cement Mixer outdoors only in a well ventilated area  
DO NOT operate the Cement Mixer inside any building, including garages, basements, crawlspaces and sheds, enclosure or compartment.  
DO NOT allow exhaust fumes to enter a confined area through windows, doors, vents or other openings.  
**DANGER CARBON MONOXIDE**, using an engine indoors **CAN KILL YOU IN MINUTES.**

### DANGER

Rotating parts can entangle hands, feet, hair, clothing and/or accessories.

Traumatic amputation or severe laceration can result.

Keep hands and feet away from rotating parts.  
Tie up long hair and remove jewelry.  
Operate equipment with guards in place.  
DO NOT wear loose-fitting clothing, dangling drawstrings or items that could become caught.

### WARNING

Sparks can result in fire or electrical shock.

#### **When servicing the engine:**

Disconnect the spark plug wire and place it where it cannot contact the plug.  
DO NOT check for spark with the plug removed.  
Use only approved spark plug testers.

### WARNING

Running engines produce heat.  
Severe burns can occur on contact.  
Combustible material can catch fire on contact.

DO NOT touch hot surfaces.  
Avoid contact with hot exhaust gases.  
Allow equipment to cool before touching.  
Maintain at least three feet of clearance on all sides to ensure adequate cooling.  
Maintain at least five feet of clearance from combustible materials.

### WARNING

Only operate the mixer on solid, flat, level ground.

Make sure the ground can support the weight of the mixer when fully loaded to prevent the mixer from tipping over.  
DO NOT attempt to move the mixer when it is loaded and/or in operation.

# Safety Rules

---

## DANGER

Fuel and fuel vapors are highly flammable and extremely explosive.

Fire or explosion can cause severe burns or death.

Unintentional startup can result in entanglement, traumatic amputation or laceration.

### **When adding or removing fuel**

Turn the engine off and let it cool for at least two minutes before removing the fuel cap. Loosen the cap slowly to relieve pressure in the tank. Only fill or drain fuel outdoors in a well-ventilated area.

DO NOT overfill the fuel tank.

Always keep fuel away from sparks, open flames, pilot lights, heat and other sources of ignition.

DO NOT light or smoke cigarettes.

### **When starting the engine**

DO NOT attempt to start a damaged engine. Make certain that the gas cap, air filter, spark plug, fuel lines and exhaust system are properly in place.

Allow spilled fuel to evaporate fully before attempting to start the engine.

Make certain that the Gasoline Cement Mixer is resting firmly on level ground.

### **When operating the Cement Mixer:**

DO NOT stand in front of engine exhaust.

### **When storing the Cement Mixer:**

Store away from sparks, open flames, pilot lights, heat and other sources of ignition.

## CAUTION

Improper treatment or use of the Cement Mixer can damage it, shorten its life and void your warranty.

Use the Cement Mixer only for intended uses. Operate only on level surfaces.

DO NOT expose Cement Mixer to excessive moisture, dust, or dirt.

DO NOT allow any material to block the cooling slots.

DO NOT use the engine if:

Equipment sparks, smokes or emits flames

Equipment vibrates excessively

## CAUTION

DO NOT force mixer

DO NOT overload the mixer.

DO NOT start the engine if the drum is fully loaded.

DO NOT shut off the engine when the drum is fully loaded.

## WARNING

Rapid retraction of the starter cord will pull hand and arm towards the engine faster than you can let go.

Unintentional startup can result in entanglement, traumatic amputation or laceration.

Broken bones, fractures, bruises or sprains could result.

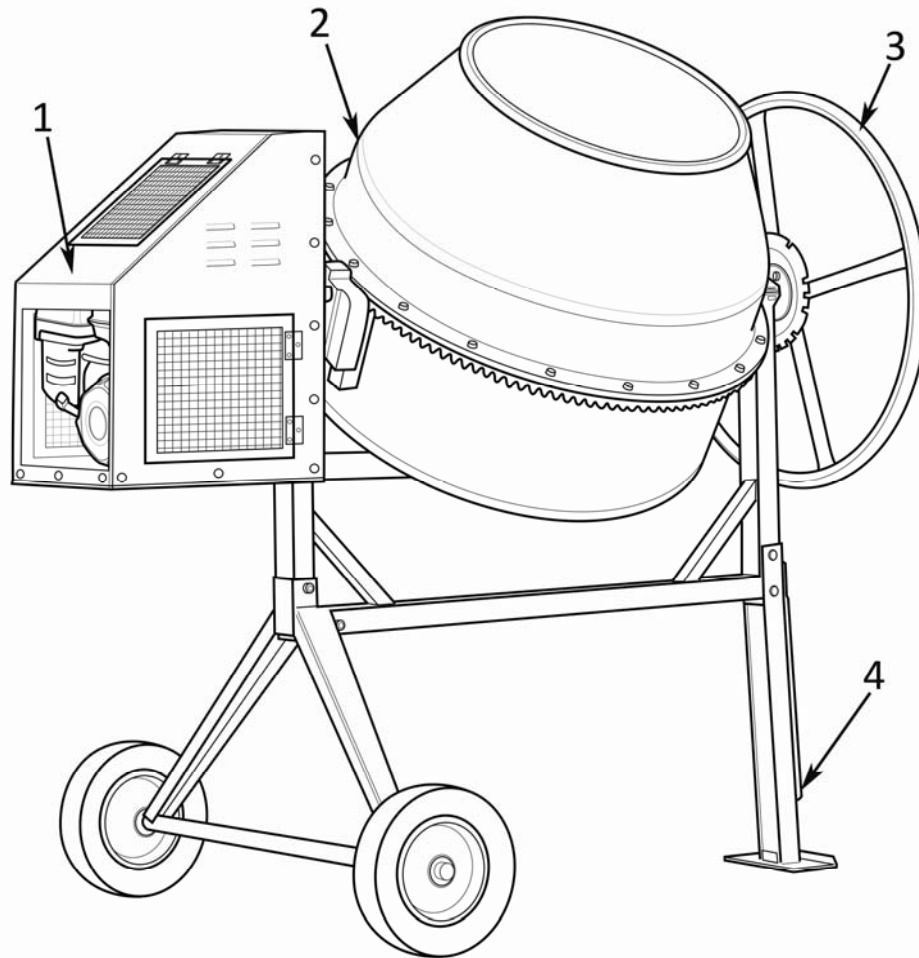
When starting engine, pull the starter cord slowly until resistance is felt and then pull rapidly to avoid kickback.



## Controls and Features

Read this owner's manual before operating your Gasoline Cement Mixer. Familiarize yourself with the location and function of the controls and features. Save this manual for future reference.

### **Cement Mixer**



**(1) Engine Cover** – Protects the 118 cc gasoline driven engine.

**(2) Mixing drum** – 7 cubic feet mixing capacity.

**(3) Hand Wheel** – Manual hand wheel, used to tilt the mixing drum.

**(4) Locking Rod** – Locks the drum in place

# Assembly

---

## Assembly

Your Cement Mixer requires some assembly.

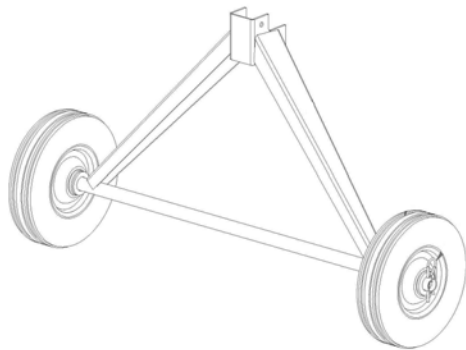
If you have any questions regarding the assembly of your Cement Mixer, call our help line at 1-877-338-0999. Please have your serial number and model number available.

### Open Shipping Crate

1. Set the shipping crate on a solid, flat surface.
2. Carefully cut the shipping bands and remove lid of shipping crate.
3. Using two people to lift, carefully remove all parts and components
4. Locate all hardware before beginning assembly.

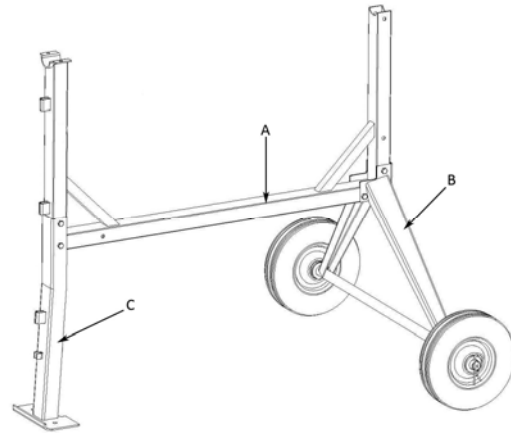
### Step 1 – Wheels

1. Slide the first wheel on the axle and secure with the hitch pin provided. Repeat for other wheel



### Step 2 – Support Brackets

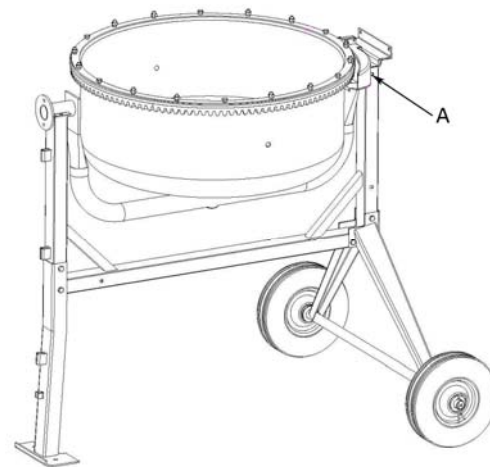
1. Attach the tank bracket (A) to the wheel bracket (B) using two M8x70 bolts, flat washers, lock washers, and nuts.
2. Attach the leg bracket (C) to the tank bracket (A) using two M8x70 bolts, flat washers, lock washers, and nuts.



### Step 3 – Tank, U bracket

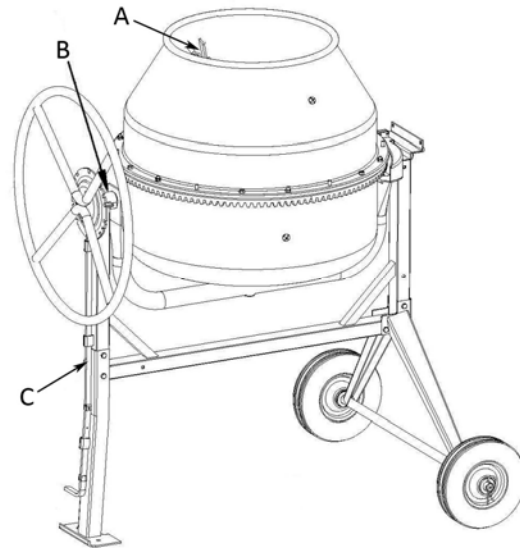
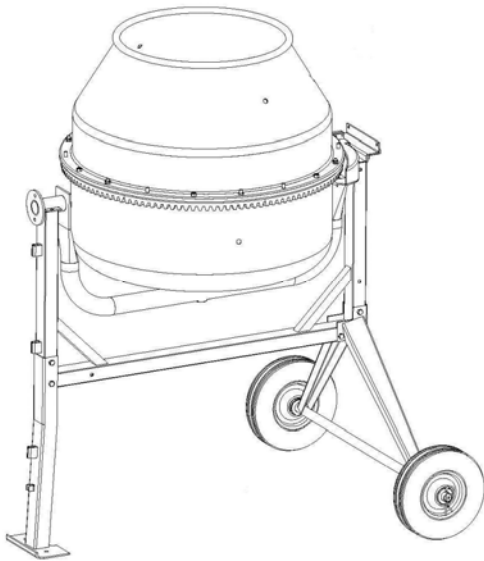
The bottom portion of the tank and the U bracket have been assembled before shipping.

1. Set the U bracket and tank onto the tank bracket.
2. Secure the motor side of the U bracket using an M8x65 bolt, washer and nut (A).
3. Do not secure hand wheel side until step 5.



## Step 4 – Tank, top

1. Back out all of the screws on the bottom portion of the tank
2. Set the top part of the tank onto the bottom part and secure all hardware.

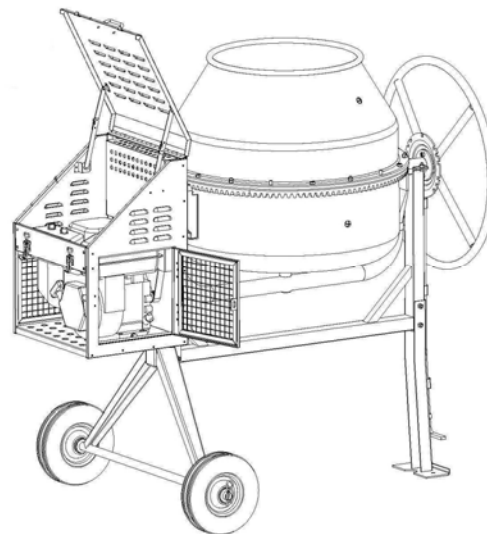


## Step 5 – Mixing paddle, Hand wheel, Locking rod foot pedal

1. Attach the mixing paddle to the inside of the tank using four M12x25 bolts, washers, and nuts (A)
2. Attach the hand wheel using two M8x20 bolts, washers, and nuts. Then secure the U bracket from step 3, by using the axle sheath and 2 M8x20 bolts, washers and nuts (B). (See parts 41,42 on page 15 for a clearer picture)
3. Slide the locking rod through the holes on the tank bracket. Slide the foot pedal through the hole on the leg bracket
4. Bolt the foot pedal to the locking rod using the M6x25 bolt and nut.

## Step 6 – Attach Engine Box

1. Locate the mounting channel on the back side of the engine box. Align the mounting channel with the tank bracket and secure with an M8x70 bolt, washer, and nut.
2. Secure the top of the engine box to the gearbox seat (part 60), using M8x20 bolts



# Assembly

---

## Add Engine Oil

### CAUTION

DO NOT attempt to crank or start the engine before it has been properly filled with the recommended type and amount of oil. Damage to the Cement Mixer as a result of failure to follow these instructions will void your warranty.

1. Make sure the Gasoline Cement Mixer is on a flat, level surface.
2. Remove oil fill cap/dipstick to add oil.
3. Add 0.63 qt (0.6 L) of oil and replace oil fill cap/dipstick.
4. Check engine oil level daily and add as needed.

### CAUTION

The engine is equipped with a low-oil-shutoff and will stop when the oil level in the crankcase falls below the threshold level.

### NOTE

Check oil often during the break-in period. Refer to the Maintenance section for recommended service intervals.

## Add Engine Fuel

1. Use clean, fresh, regular unleaded fuel with a minimum octane rating of 85.
2. DO NOT mix oil with fuel.
3. Clean the area around the fuel cap.
4. Remove the fuel cap
5. Slowly add fuel to the tank. DO NOT overfill. Allow approximately ¼ inch of space for fuel expansion.
6. Screw on the fuel cap and wipe away any spilled fuel.

### CAUTION

Use regular unleaded gasoline with a minimum octane rating of 85.

DO NOT mix oil and gasoline.  
Fill tank to approximately ¼" below the top of the tank to allow for fuel expansion.  
DO NOT fill fuel tank indoors.  
DO NOT fill fuel tank when the engine is running or hot.  
DO NOT overfill the fuel tank.  
DO NOT light cigarettes or smoke when filling the fuel tank.

## Operation

### **Cement Mixer Location**

This Cement Mixer must have at least five feet of clearance from combustibile material. Leave at least three feet of clearance on all sides of the Cement Mixer to allow for adequate cooling, maintenance and servicing. **DO NOT** place the Gasoline Cement Mixer near vents or intakes where engine exhaust fumes could be drawn into occupied or confined spaces. Carefully consider wind and air currents when positioning the Cement Mixer.

#### **WARNING**

Only operate the Cement Mixer on solid, flat, level ground.

Make sure the ground can support the weight of the mixer when fully loaded to prevent the mixer from tipping over.

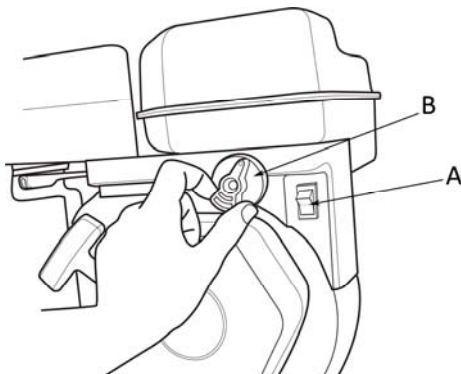
**DO NOT** attempt to move the mixer when it is loaded and/or in operation.

#### **WARNING**

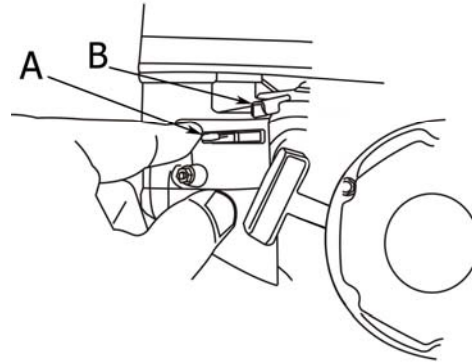
**DO NOT** attempt to start the engine if mixer is fully loaded with material.

### **Starting the Engine**

1. Make certain cement mixer is on a flat, level surface.
2. Flip engine switch to "ON" position (A)
3. Rotate the fuel valve to the "ON" position (to the left) (B).



4. Move the choke lever (Item A) to the "Choke" position (to the left).



5. Pull the starter cord slowly until resistance is felt and then pull rapidly.
6. As engine warms up, move the choke lever to "Run" (to the right).
7. Move the throttle lever (Item B) to the "Fast" position.

#### **NOTE**

If the engine starts but does not run make certain that the Cement Mixer is on a flat, level surface. The engine is equipped with a low oil sensor that will prevent the engine from running when the oil level falls below a critical threshold.

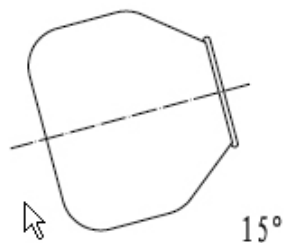
### **Stopping the Engine**

1. Turn the ignition switch to the "Off" position.
2. Turn the fuel valve to the "Off" position.

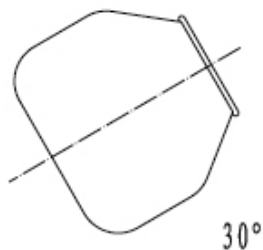
### **Cement Mixer Operation**

1. Place the Cement Mixer on a solid, flat, level ground.
2. Adjust the drum to correct angle by disengage the locking rod and rotate the hand wheel until the desired angle is reached.

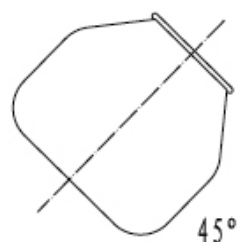
# Operation



Mixing Capacity - 1.94 cu. ft



Mixing Capacity - 3.0 cu. ft



Mixing Capacity - 4.59 cu. ft.

3. Re-engage the locking rod to secure the drum at the desired angle.
4. Start the engine (Reference Starting Engine Section).
5. With the Drum turning at 30 RPMs begin adding material to the drum. **(Refer to the mixing instructions on the cement bag before starting).**
6. For best results, proceed as follows:
  - Pour the required amount of water into the drum.
  - Add the required amount of gravel in the drum.
  - Add the required amount of Cement into the drum.
  - Add the required amount of sand into the drum.
7. Allow time for the water, gravel, cement and sand to mix thoroughly.
8. The drum of the Cement Mixer needs to be rotating when filling or emptying the drum. Use caution and DO NOT turn

off the Cement Mixer while the drum is full of cement.

9. To discharge the cement mix, grasp the hand wheel firmly and with your foot push down the locking rod. Slowly turn the hand wheel counterclockwise to empty drum.
10. After emptying the cement mix, turn the hand wheel clockwise to return the drum to its original position. Engage the locking rod to hold the drum in place. Always make sure the locking rod is fully engaged after discharging the cement mix before refilling the drum.
11. Repeat steps if more cement mix is needed.
12. When the project is completed, turn off the engine of the Cement Mixer. Allow the engine to cool before thoroughly cleaning the inside of the drum and the exterior of the Cement Mixer.

## WARNING

DO NOT attempt to move the Cement Mixer when it is full and/or in operation. Serious injury may result.

## Maintenance

The owner/operator is responsible for all periodic maintenance.

### WARNING

Never operate a damaged or defective Cement Mixer.

Before each use, inspect the condition of the Cement Mixer. Check for loose bolts and nuts, misalignment, binding of moving parts, loose or broken parts.

Never perform any service or maintenance on the Cement Mixer while it is running. Before performing any inspection, maintenance and cleaning turn off the engine.

### WARNING

Improper maintenance will void your warranty.

Complete all scheduled maintenance in a timely manner. Correct any issue before operating the Cement Mixer.

### NOTE

For service or parts assistance, contact our help line at 1-877-338-0999.

## **Wash Out**

After use, immediately wash out the contents and debris within the mixing drum. Scrubbing the interior of the mixing drum with a long handled bristle brush and water will produce the best results.

Be careful with water cleaning so as not to damage the engine.

DO NOT allow the cement to dry inside the Cement Mixer. Over time, this will add weight to the drum and harm the engine.

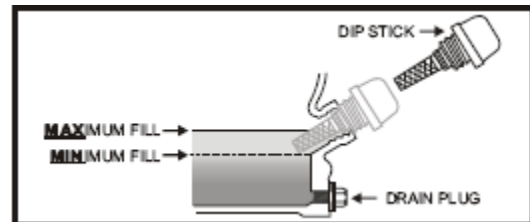
## **Engine Maintenance**

To prevent accidental starting, remove and ground spark plug wire before performing any service.

### **Oil**

Change oil when the engine is warm. Refer to the oil specification to select the proper grade of oil for your operating environment.

1. Remove the oil drain plug with a 12 mm socket and extension.
2. Allow the oil to drain completely.
3. Replace the drain plug.
4. Remove oil fill cap/dipstick to add oil.
5. Add 0.63 qt (0.6 L) of oil and replace oil fill cap/dipstick.
6. Dispose of used oil at an approved waste management facility.



### **Spark Plugs**

1. Remove the spark plug cable from the spark plug.
2. Inspect the electrode on the plug. It must be clean and not worn to produce the spark required for ignition.
3. Make certain the spark plug gap is 0.7 - 0.8mm (0.028 - 0.031 in.).
4. Refer to the spark plug recommendation chart when replacing the plug.
5. Carefully thread the plug into the engine.
6. Use the spark plug tool to firmly install the plug.
7. Attach the spark plug wire to the plug.

# Maintenance

## Air Filter

1. Unscrew wing nut to remove the air filter cover.
2. Unscrew wing nut to remove the air filter.
3. Separate the foam element and the paper element.
4. Tap the paper filter element to remove dirt and debris. Use compressed air (25 PSI) to clear debris.
5. For the foam element: Wash in liquid detergent and water. Squeeze thoroughly dry in a clean cloth.
6. Saturate in clean engine oil.
7. Squeeze in a clean, absorbent cloth to remove all excess oil.
8. Reassemble the two elements and reattach. Tighten wing nut
9. Reattach the air filter cover and snap in place.

## Cement Mixer and Engine Cleaning



### CAUTION

DO NOT allow the cement to dry inside the drum.

DO NOT use a garden hose to clean the Cement Mixer engine.

Water can enter the engine through the cooling slots and damage the engine.  
Water can contaminate the fuel system.

DO NOT allow the cement to dry inside the drum. Immediately wash out the contents and debris within the mixing drum. Scrubbing the interior of the mixing drum with a long handled bristle brush and water will produce the best results. Be careful not to spray water on the engine when cleaning the drum.

Use a damp cloth to clean exterior surfaces of the engine.

Use a soft bristle brush to remove dirt and oil.

Use an air compressor (25 PSI) to clear dirt and debris from the Gasoline Cement Mixer. Inspect all air vents and cooling slots to ensure that they are clean and unobstructed.

## Maintenance Schedule

Follow the service intervals indicated in the schedule below.

Service your Gasoline Cement Mixer more frequently when operating in adverse conditions.

Contact our help line at 1-877-338-0999 to locate the nearest Champion Power Equipment certified service dealer for your Gasoline Cement Mixer or engine maintenance needs.

Every 8 hours or daily
Check oil level
Clean around air intake and muffler
First 5 Hours
Change oil
Every 50 hours or every season
Clean air filter
Change oil if operating in hot environments
Every 100 hours or every season
Change oil
Clean/Adjust spark plug
Check/Adjust valve clearance *
Clean spark arrester
Clean fuel tank and filter *
Every 3 years
Replace fuel line

- \* To be performed by knowledgeable, experienced owners or Champion Power Equipment certified service dealers



## Storage

### ***Cement Mixer Storage***

Make certain that the Gasoline Cement Mixer is kept clean and stored properly. DO NOT expose the unit to extreme conditions, excessive dust, dirt, moisture or corrosive vapors.

### ***Engine Storage***

Engines stored for over 30 days need to be drained of fuel to prevent gum from forming in the fuel system, carburetor components and hoses. For long term storage, please follow these guidelines.

1. Allow the engine to cool completely before storage.
2. Clean the engine according to the instructions in the Maintenance section.
3. Drain all fuel completely from the fuel line and carburetor to prevent gum from forming.
4. Add a fuel stabilizer into the fuel tank.
5. Change the oil.
6. Remove the spark plug and pour about  $\frac{1}{2}$  ounce of oil into the cylinder. Crank the engine slowly to distribute the oil and lubricate the cylinder.
7. Reattach the spark plug.

# Specifications

---

## Specifications

### **Engine Specifications**

Engine 118 cc OHV CPE

### **Cement Mixer Specifications**

Drum Capacity 7 cu. ft  
Drum Mixing Capacity 4.59 cu. ft  
Drum Weight Capacity 462.97 lbs (210 kg)  
Drum Speed RPM 30

#### Overall dimensions

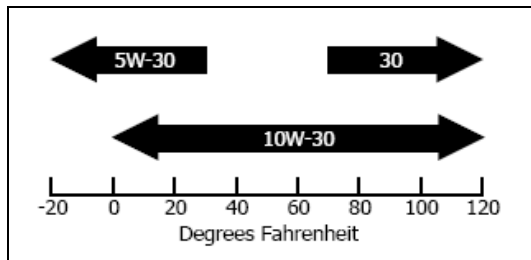
Weight 211.6 lbs. (96 kg)  
Height 54.3 inches (138 cm)  
Width 29.5 inches (75 cm)  
Length 56.7 inches (144 cm)

### **Fuel**

Fuel capacity is 0.53 gallons (2 L). Use regular unleaded gasoline with a minimum octane rating of 85.

### **Oil**

Oil capacity is 0.63 qt (0.6 L).



### **Spark Plugs**

Your semi-trash pump comes equipped with a 3/4" long reach plug (19mm).

Intermittent use (less than 1 hour/month) or colder temperatures (below 60°F)  
NGK B6ES or equivalent

Moderate use (less than 3 hours/month) or seasonal temperatures (50-80°F)  
NGK B7ES or equivalent

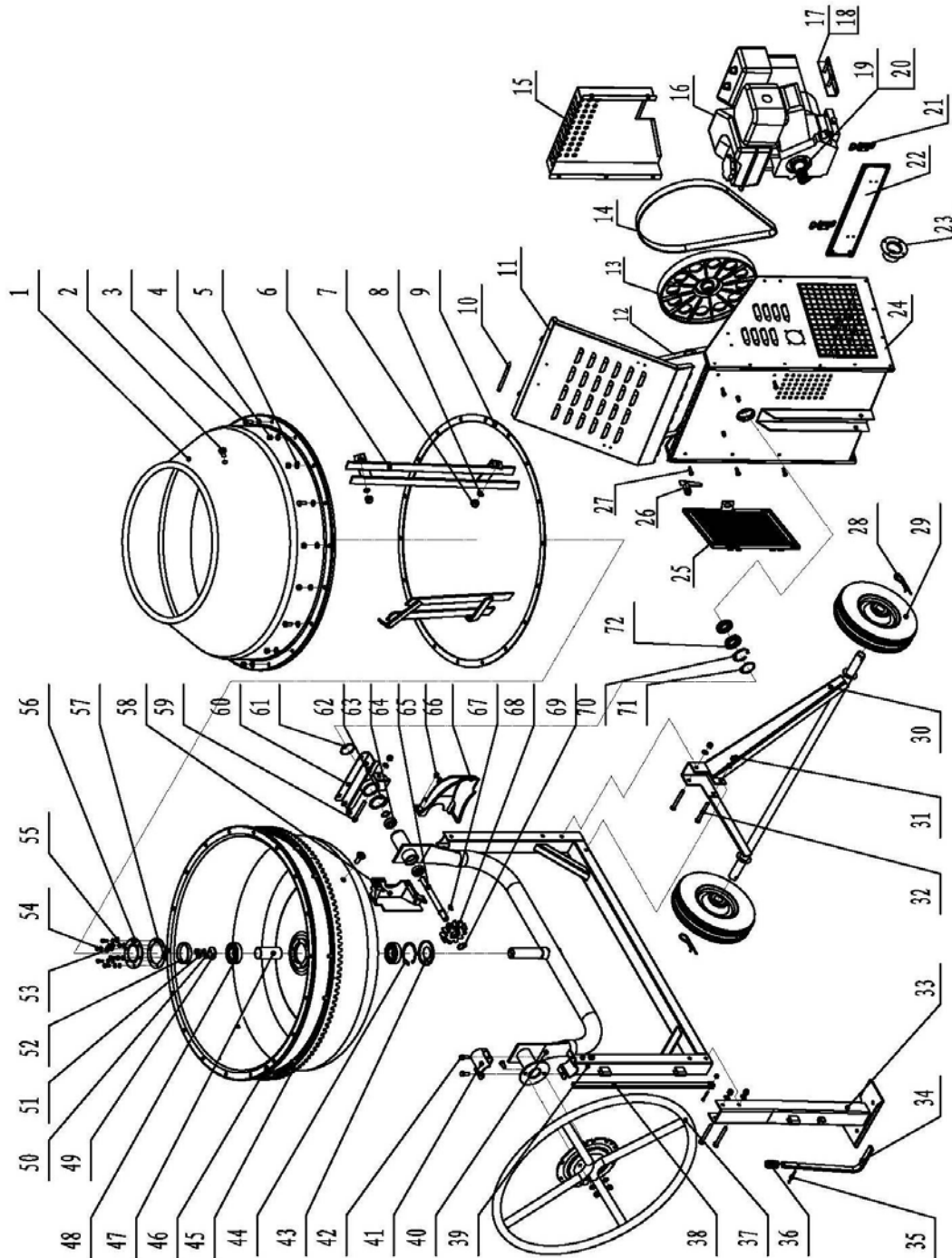
Extreme use (continuous) or hot climates (80-100°F)  
NGK B8ES or equivalent

Make certain the spark plug gap is 0.7 - 0.8mm (0.028 - 0.031 in.).

### **Valve Clearance**

Intake 0.13-0.17mm (0.005 – 0.007 in.)  
Exhaust 0.18-0.22mm (0.007 – 0.009 in.)

**Cement Mixer Parts Diagram**



# Specifications

---

## **Cement Mixer Parts List**

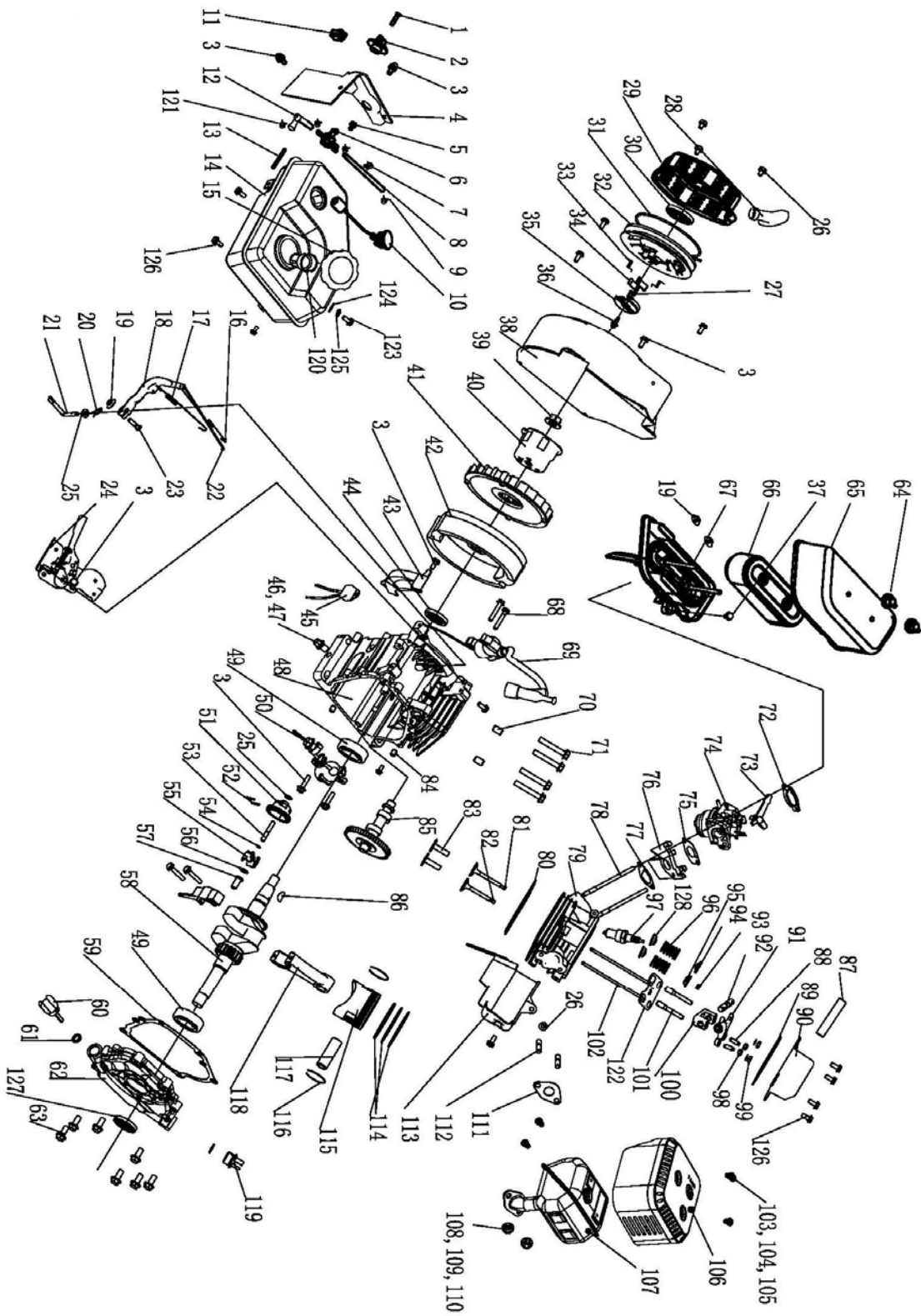
Item	Part Number	Description	Qty
1	54051-1	Upper Drum	1
2	54051-2	Pan Screw M12x25	4
3	54051-3	Bolt M8x18	6
4	54051-4	Nut M8	12
5	54051-5	Washer	32
6	54051-6	Mixing paddle	2
7	54051-7	Nut M12	4
8	54051-8	Spring washer 12	4
9	54051-9	Drum seal	1
10	54051-10	Lifting grip	1
11	54051-11	Cover of engine	1
12	54051-12	Foldable pole	2
13	54051-13	Big belt pulley	1
14	54051-14	PJ V-ribbed belt	1
15	54051-15	Cover of big belt pulley	1
16	54051-16	118cc engine	1
17	54051-17	Adjustment panel of belt	1
18	54051-18	Inner hex screw M10X55	2
19	54051-19	Engine axle sheath	1
20	54051-20	Small engine V-ribbed belt	1
21	54051-21	Locked button	1
22	54051-22	Front seal cover	1
23	54051-23	Exhaust pipe	1
24	54051-24	Engine box	1
25	54051-25	Side door for oil access	1
26	54051-26	Lock of side door	1
27	54051-27	Outer hex screw M6X20	5
28	54051-28	Auriform pin	2
29	54051-29	10" solid tire	2
30	54051-30	Wheel bracket	1
31	54051-31	Lock nut	14
32	54051-32	Bolt M8x70	5
33	54051-33	Foot bracket	1
34	54051-34	Footstock lever	1
35	54051-35	Cotter pin 4x35	1
36	54051-36	Spring	1
37	54051-37	Hand wheel	1
38	54051-38	Connection lever	1
39	54051-39	Tank bracket	1
40	54051-40	U-bracket	1
41	54051-41	Axle Sheath 1	1
42	54051-42	Bolt M8x20	4
43	54051-43	Plastic cover	1
44	54051-44	Retainer ring 62	1
45	54051-45	210 gear ring	6
46	54051-46	Lower drum	1
47	54051-47	Long sheath	1
48	54051-48	Axle 6206	2
49	54051-49	Washer	1
50	54051-50	Spring washer 8	2
51	54051-51	Inner hex screw M8X16	2
52	54051-52	Short sheath	1

# Specifications

Item	Part Number	Description	Qty
53	54051-53	Spring washer 6	6
54	54051-54	Bolt M6X16	6
55	54051-55	Flat washer 6	6
56	54051-56	Lid	1
57	54051-57	Seal washer	1
58	54051-58	Gear cover 1	1
59	54051-59	Bolt M8X65	1
60	54051-60	Gearbox seat	1
61	54051-61	Steel washer on shaft 42	1
62	54051-62	Washer on shaft 42	1
63	54051-63	Bearing 6202	2
64	54051-64	Small gear shaft	1
65	54051-65	Pan tapping screw ST4, 8x16-F	3
66	54051-66	Gear cover 2	1
67	54051-67	Key 5x18x5	1
68	54051-68	Small gear	1
69	54051-69	Washer on shaft 15	2
70	54051-70	Circlips for hole 47	1
71	54051-71	Steel washer on shaft 30	1
72	54051-72	Bearing 6906	2

# Specifications

## Engine Parts Diagram



## Engine Parts List

Item	Part Number	Description	Qty
1	GB5781-B4-12	Bolt M4×12	1
2	ST168F-1070003-G	Fuel Valve Knob	1
3	GB5789-FB6-12	Flange Bolt M6×12	11
4	ST160F-1070002-G	Fuel Tank Shroud	1
5	GB5789-FB5-12	Flange Bolt M5×12	1
6	ST168F-1070200-G	Fuel Valve	1
7	ST168F-1070008-G	Tube Clip	1
8	ST160F-1070003-G	Tube, I	1
9	ST188FD-1070006A	Clip	3
10	ST160F-1071000-G	Fuel Meter Assembly	1
11	ST168F-1121100-C	Switch	1
12	ST160F-1070004-G	Tube, II	1
13	ST152FD-1070200	Fuel Filter	1
14	ST160F-1070200-G	Fuel Tank	1
15	ST160F-1070100H	Fuel Tank Cap	1
16	ST160F-1110005	Throttle Return Spring	1
17	ST160F-1110007	Governor Spring	1
18	ST160F-1110003	Governor Arm	1
19	GB41-N-6	Nut M6	3
20	ST160F-1110008	Lock Pin	1
21	ST160F-1110001	Governor Arm Shaft	1
22	ST160F-1110006	Governor Rod	1
23	ST160F-1110004	Governor Arm Bolt	1
24	ST160F-1111000	Control Assembly	1
25	ST160F-1110108	Governor Washer	2
26	GB5789-FB6-8	Flange Bolt M6×8	6
27	ST188F-1060004	Ratchet Guide Spring	1
28	ST160F-1061200	Recoil Starter Knob	1
29	ST160F-1061100-Q	Recoil Starter Cover	1
30	ST160F-1061005	Recoil Starter Spring	1
31	ST160F-1061009	Recoil Starter Rope	1
32	ST160F-1061001A	Recoil Starter Reel	1
33	ST188F-1060006	Return Spring	2
34	ST188F-1060005	Starter Ratchet	2
35	ST188F-1060003	Ratchet Guide	1
36	ST188F-1060002	Setting Screw	1
37	GB5789-FB6-20	Flange Bolt M6×20	1
38	ST160F-1080100-G	Fan Cover	1
39	ST160F-1050010	Nut M14	1
40	ST160F-1060001	Start Hub	1
41	ST160F-1080001	Cooling Fan	1
42	ST160F-1120100	Flywheel	1
43	ST160F-1080003	Side Place	1
44	ST160F-1030200	Oil Seal	1
45	ST160F-1129000-G	Diode Comp	1
46	ST160F-1030003	Drain Plug Bolt	2
47	ST160F-1030004	Drain Bolt Washer	2
48	ST160F-1030012-G	Crankcase	1
49	GB276-BB-6205-UU	Radial Ball Bearing 6205 Unsealed	2
50	ST160F-1127000-A	Oil Level Switch	1
51	ST160F-1110101	Governor Weight Holder	1
52	ST160F-1110102	Governor Weight Pin	2

# Specifications

Item	Part Number	Description	Qty
53	ST160F-1110104	Governor Shaft	1
54	ST160F-1110103	Governor Holder Clip	1
55	ST160F-1110107	Governor Weight	2
56	ST160F-1110106	Governor Shaft Washer	1
57	ST160F-1110105	Governor Cover	1
58	ST160F-1050001-E	Crankshaft Comp	1
59	ST160F-1030008-G	Case Cover Packing	1
60	ST160F-1030001-B	Oil Filler Cap	1
61	ST160F-1030002	Oil Filler Cap Packing	2
62	ST160F-1030007-G	Crankcase Cover	1
63	GB5789-FB6-29	Flange Bolt M6×29	7
64	ST168F-1090100	Air Cleaner Cover Nut	2
65	ST168F-1090001-G	Air Cleaner Cover	1
66	ST168F-1090200-C	Air Cleaner Element	1
67	ST168F-1090500-G	Air Cleaner Elbow	1
68	GB5789-FB6-25	Flange Bolt M6×25	2
69	ST160F-1123000	Ignition Coil	1
70	152FMD-1001007	Dowel Pin 10×16	2
71	GB5789-FB8-55	Flange Bolt M8×55	4
72	ST160F-1130004	Carburetor Washer	1
73	ST160F-1130100	Choke Lever	1
74	ST160F-1130000-G	Carburetor Assembly	1
75	ST160F-1130003	Carburetor Packing	1
76	ST160F-1130001	Carburetor Insulator	1
77	ST160F-1130002	Insulator Packing	1
78	ST160F-1010001	Stud Bolt M6×113	2
79	ST160F-1010100-G	Cylinder Head	1
80	ST160F-1030009	Cylinder Head Gasket	1
81	ST160F-1040002	Intake Valve	1
82	ST160F-1040006	Exhaust Valve	1
83	ST168F-2-1040013	Valve Lifter	2
84	ST168F-1030015-G	Dowel Pin 9×14	2
85	ST160F-1041000	Camshaft Comp	1
86	GB1099-79	Key 4×7.5×19	1
87	ST160F-1020001	Breather Tube	1
88	ST160F-1040024	Rectify Bolt	2
89	ST160F-1020002-A	Head Over Packing	1
90	ST168F-1020100-C	Cylinder Head Cover	1
91	ST160F-1040022	Intake Rocker	2
92	ST160F-1040021	Rocker Axis	1
93	ST160F-1040008	Valve Rotator	1
94	ST160F-1040001	Intake Valve Spring Retainer	1
95	ST160F-1040007	Exhaust Valve Spring Retainer	1
96	ST160F-1040003	Valve Spring	2
97	ST160F-1124000	Spark Plug	1
98	ST160F-1040025	Exhaust Rocker	2
99	GB41-N-6	Nut M6	2
100	ST160F-1040026	Valve Rocker Arm	1
101	ST168F-1040027	Pivot Bolt	2
102	ST160F-1040005	Push Rod	2
103	GB1667-S5-8	Screw M5×8	4
104	GB90-W-5	Washer ø5	4
105	GB93-LW-5	Lock Washer ø5	4
106	ST160F-1101100-G	Muffler Protector	1



# Specifications

Item	Part Number	Description	Qty
107	ST160F-1101200-G	Muffler	1
108	GB41-N-8	Nut M8	2
109	GB90-W-8	Washer ø8	2
110	GB93-LW-8	Lock Washer ø8	2
111	ST168F-1100001-G	Muffler Packing	1
112	ST160F-1010002	Exhaust Bolt	2
113	ST160F-1080002-G	Shroud	1
114A	ST160F-1050007	First Ring Set	1
114B	ST160F-1050006	Second Ring Set	1
114C	ST160F-1050200	Oil Ring Set	1
115	ST160F-1050004	Piston	1
116	139FMD-1004006	Piston pin clip	2
117	ST160F-1050003	Piston Pin	1
118	ST160F-1050100	Connecting Rod Comp	1
119	ST160F-1030005-B	Oil Filler Cap	1
120	ST160F-1070006	Fuel Filter	1
121	ST1P68F-1070006-F	Clip	1
122	ST160F-1040028	Push Rod Guide Plate	1
123	GB5789-FB6-35	Flange Bolt M6×35	1
124	GB90-W-6	Washer ø6	3
125	GB93-LW-6	Lock Washer ø6	1
126	GB5789-FB6-15	Flange Bolt M6×15	7
127	ST160F-1030100	Oil Seal	1
128	ST168F-1040014	Oil Seal	2

# Troubleshooting

---

## Troubleshooting

<b>Problem</b>	<b>Cause</b>	<b>Solution</b>
Engine will not start	No fuel	Add fuel
	Faulty spark plug	Replace spark plug
	Unit loaded during start up	Remove load from unit
Engine will not start; Engine starts but runs roughly	Low oil level	Fill crankcase to the proper level Place Cement Mixer on a flat, level surface
	Choke in the wrong position.	Adjust choke.
	Spark plug wire loose	Attach wire to spark plug
Engine shuts down during operation	Out of fuel	Fill fuel tank
	Low oil level	Fill crankcase to the proper level. Place Cement Mixer on a flat, level surface
Engine cannot supply enough power or overheating	Insufficient ventilation	Check for air restriction. Move to a well ventilated area
Engine gallops	Engine governor defective	Contact the help line

---

## Warranty

### CHAMPION POWER EQUIPMENT 1 YEAR LIMITED WARRANTY

Effective September 1, 2006. Replaces all undated warranties and all warranties dated before September 1, 2006.

#### **Warranty Qualifications**

Champion Power Equipment (CPE) will register this warranty upon receipt of your Warranty Registration Card and a copy of your sales receipt from one of CPE's retail locations as proof of purchase.

Please submit your warranty registration and your proof of purchase within ten (10) days of the date of purchase.

#### **Repair/Replacement Warranty**

CPE warrants to the original purchaser that the mechanical and electrical components will be free of defects in material and workmanship for a period of one (1) year from the original date of purchase (90 days for commercial & industrial use). Transportation charges on product submitted for repair or replacement under this warranty are the sole responsibility of the purchaser. This warranty only applies to the original purchaser and is not transferable.

#### **Do not return the unit to the place of purchase**

Contact CPE's Technical Service and CPE will troubleshoot any issue via phone or e-mail. If the problem is not corrected by this method, CPE will, at its option, authorize evaluation, repair or replacement of the defective part or component at a CPE Service Center. CPE will provide you with a case number for warranty service. Please keep it for future reference. Repairs or replacements without prior authorization, or at an unauthorized repair facility, will not be covered by this warranty.

#### **Warranty Exclusions**

This warranty does not cover the following repairs and equipment:

##### **Normal Wear**

Cement Mixer needs periodic parts and service to perform well. This warranty does not cover repair when normal use has exhausted the life of a part or the equipment as a whole.

##### **Installation, Use and Maintenance**

This warranty will not apply to parts and/or labor if this Cement Mixer is deemed to have been misused, neglected, involved in an accident, abused, loaded beyond its limits, modified, and installed improperly. Normal maintenance such as spark plugs, air filters, adjustments, fuel

system cleaning and obstruction due to buildup is not covered by this warranty.

#### **Other Exclusions**

This warranty excludes:

Cosmetic defects such as paint, decals, etc.  
Wear items such as filter elements, o-rings, etc.  
Accessory parts such as starting batteries, and storage covers.

Failures due to acts of God and other force majeure events beyond the manufacturer's control.

Problems caused by parts that are not original Champion Power Equipment parts.

#### **Limits of Implied Warranty and Consequential Damage**

Champion Power Equipment disclaims any obligation to cover any loss of time, use of this product, freight, or any incidental or consequential claim by anyone from using this Gasoline Cement Mixer. THIS WARRANTY IS IN LIEU OF ALL OTHER WARRANTIES, EXPRESS OR IMPLIED, INCLUDING WARRANTIES OF MERCHANTABILITY OR FITNESS FOR A PARTICULAR PURPOSE

A unit provided as an exchange will be subject to the warranty of the original unit. The length of the warranty governing the exchanged unit will remain calculated by reference to the purchase date of the original unit.

This warranty gives you certain legal rights which may change from state to state. Your state may also have other rights you may be entitled to that are not listed within this warranty.

#### **Contact Information**

##### **Address**

Champion Power Equipment, Inc.  
Customer Service  
10006 Santa Fe Springs Rd.  
Santa Fe Springs, CA 90670

##### **Customer Service**

Mon – Fri 8:30 AM – 5:00 PM (PST/PDT)  
Toll Free: 1-877-338-0999  
Fax no.: 1-562-236-9429

##### **Technical Service**

Mon – Fri 8:30 AM – 5:00 PM (PST/PDT)  
Toll Free: 1-877-338-0999  
tech@championpowerequipment.com

Notes

---

Notes