

Introduction

Congratulations on your purchase of a Champion Power Equipment adjustable bike rack. With proper use and maintenance, this bike rack will bring years of satisfying service.

This Owner's Manual contains important safety instructions and information. **SAVE THESE INSTRUCTIONS FOR FUTURE REFERENCE.**

www.championpowerequipment.com

NOTE

If you have questions regarding your bike rack, we can help. Please call our help line at 1-877-338-0999.

Safe and Proper Use

WARNING

Read this manual thoroughly before installing and using your bike rack. Failure to follow instructions could result in serious injury to person or property.

WARNING

This rack is designed to attach securely to most automobile receiver hitches. Due to variations in automobile design and utility, we cannot guarantee this product will fit all vehicles. It is your responsibility to ensure the safe and proper use of this product.

This rack is designed for use on passenger cars, trucks, and SUV's with appropriate receiver capacity.

Improper use and attachment of the rack to your vehicle may be hazardous to your bicycles, vehicles or other vehicles driving behind you.

WARNING

DO NOT exceed the rated capacity of this bike rack. Load no more than 4 bicycles, weighing less than 200 lbs total.

DO NOT use this bike for transporting or carrying other items or materials besides bicycles.

CAUTION - In Use

ALWAYS secure your bicycles to the rack using the frame cradles and straps. Additional rope, shock cords, or cable locks may be used for additional security and stability.

If a strap appears worn or frayed, replace it immediately.

Check straps and cradles regularly during use. It's a good practice to stop your vehicle after 500 feet and check the security of the mounted bicycles.

This bike rack was not constructed to protect bicycles from severe abuse in off-highway driving conditions. Bumpy roads may cause mounted bicycles to move and shift in transit, resulting in property damage.

DO NOT let bicycle tires hang near the exhaust pipe of your vehicle. Hot exhaust may cause damage to tires.

Assembly

This product ships from our factory partially assembled.

Clear away a dry clean space on the floor or a table to assemble the bike rack.

Remove all contents from the packing box and locate all components. For parts reference see page 5.

1. Insert the support pole (7) into the square hitch. Secure the pole to the hitch using an M12 x 65 bolt, M12 washers, and M12 lock nut.

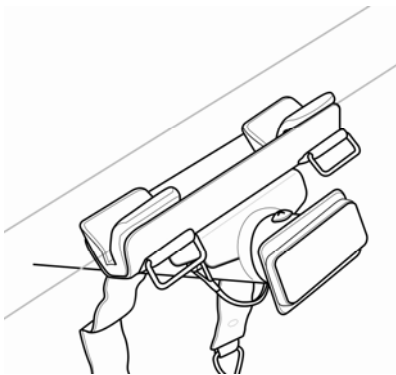
- Slide the horizontal bar (9) over the support pole (7) and secure with M12 x 65 bolt, M12 washers, and M12 lock nut.

Mounting

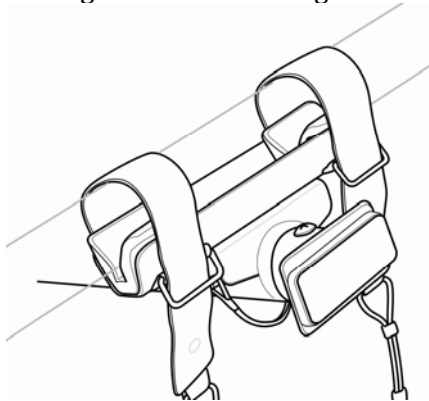
Now that your rack is assembled, follow these instructions below for safe and proper use.

NOTE: Before every use, verify that all components are in good working order. Secure and tighten all hardware before mounting bicycles to the rack.

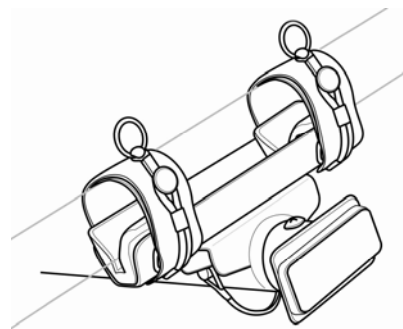
- Slide the square hitch into the receiver tube of your vehicle. Secure the hitch with the 5/8" hitch pin (3) and R pin (2) provided.
- Lift a bicycle up to the horizontal bar of the rack and place the frame of the bicycle onto the cradle assembly (17). See image below.



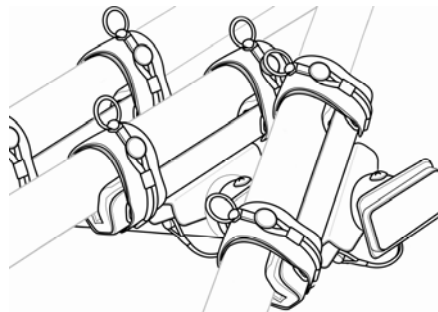
- Take the cradle strap and wrap it over the frame of the bicycle, then through the ring on cradle. See image below.



- Double the strap over the ring and wrap back around the frame of the bicycle tightly. Wrap all the way around until the end of strap links with the tab. See image below.

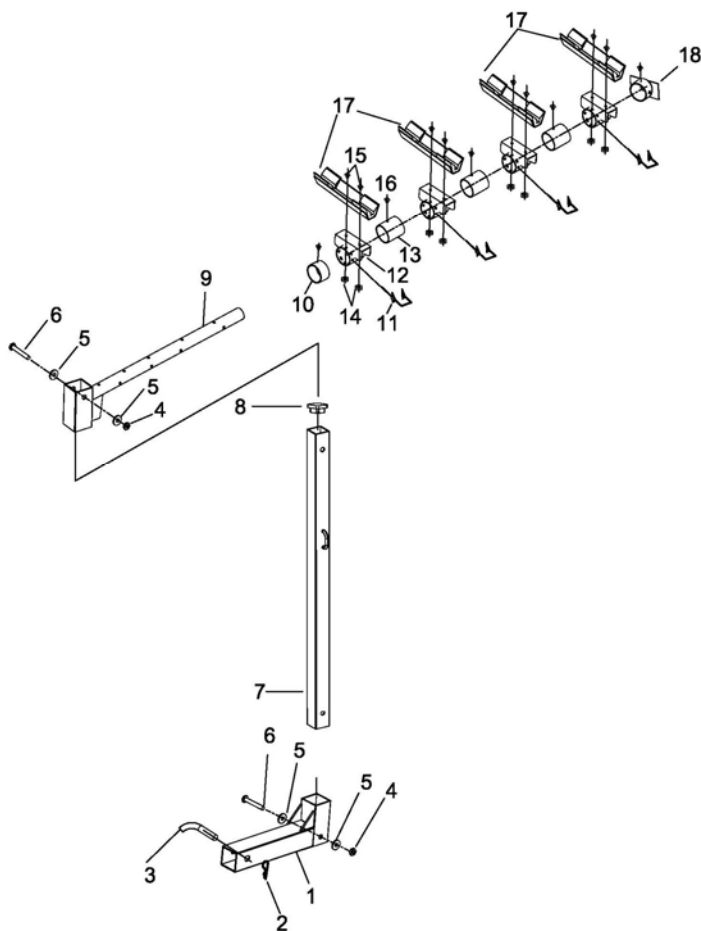


- Repeat actions for additional bicycles.
- Depending on the style of your bicycle frame you made need to adjust the angle of the cradle assembly. You may also need to adjust the angle of the cradle assembly to accommodate multiple bicycles. Simply remove the locking pin (11) and rotate the cradle assembly. Re-insert the locking pin to secure.



- Use the strap located on the support bar to loop through bicycle wheels to prevent movement during transit.
- Make sure all bicycles are secure and stable before moving the vehicle

Parts List and Diagram



No.	Part Number	Description	Qty
1	50055-1	2"x2" SQUARE HITCH	1
2	50055-2	R-PIN	1
3	50055-3	5/8" HITCH PIN	1
4	50055-4	M12 LOCK NUT	2
5	50055-5	∅ 12 WASHER	4
6	50055-6	M12X65mm BOLT	2
7	50055-7	SUPPORT POLE	1
8	50055-8	SQUARE CAP	1
9	50055-9	HORIZONTAL BAR	1
10	50055-10	∅ 48x20mm SPACER	1
11	50055-11	∅ 6mm LOCKING PIN	4
12	50055-12	CRADLE SUPPORTER	4
13	50055-13	∅ 48x54mm SPACER	3
14	50055-14	M6 LOCK NUT	8
15	50055-15	M6X12 SCREW	8
16	50055-16	M6X15 SCREW	5
17	50055-17	CRADLE ASSEMBLY	4
18	50055-18	BACK CAP	1

Warranty

Warranty

CHAMPION POWER EQUIPMENT ONE YEAR LIMITED WARRANTY

Effective September 1, 2006. Replaces all undated warranties and all warranties dated before September 1, 2006.

Warranty Qualifications

Champion Power Equipment (CPE) will register this warranty upon receipt of your Warranty Registration Card and a copy of your sales receipt from one of CPE's retail locations as proof of purchase.

Please submit your warranty registration and your proof of purchase within ten (10) days of the date of purchase.

Repair/Replacement Warranty

CPE warrants to the original purchaser that the components will be free of defects in material and workmanship for a period of one (1) year from the original date of purchase. Transportation charges on product submitted for repair or replacement under this warranty are the sole responsibility of the purchaser. This warranty only applies to the original purchaser and is not transferable.

Do not return the unit to the place of purchase

Contact CPE's Technical Service and CPE will troubleshoot any issue via phone or e-mail. If the problem is not corrected by this method, CPE will, at its option, authorize evaluation, repair or replacement of the defective part or component at a CPE Service Center. CPE will provide you with a case number for warranty service. Please keep it for future reference. Repairs or replacements without prior authorization, or at an unauthorized repair facility, will not be covered by this warranty.

Warranty Exclusions

This warranty does not cover the following repairs and equipment:

Normal Wear

This warranty does not cover repair when normal use has exhausted the life of a part or the equipment as a whole.

Installation, Use and Maintenance

This warranty will not apply to parts and/or labor if this bicycle rack is deemed to have been misused, neglected, involved in an accident, abused, loaded beyond the rack's limits, modified, or installed improperly.

Other Exclusions

This warranty excludes:

Cosmetic defects such as paint, decals, etc.
Failures due to acts of God and other force majeure events beyond the manufacturer's control.

Problems cause by parts that are not original Champion Power Equipment parts.

Limits of Implied Warranty and Consequential Damage

Champion Power Equipment disclaims any obligation to cover any loss of time, use of this product, freight, or any incidental or consequential claim by anyone from using this winch. THIS WARRANTY IS IN LIEU OF ALL OTHER WARRANTIES, EXPRESS OR IMPLIED, INCLUDING WARRANTIES OF MERCHANTABILITY OR FITNESS FOR A PARTICULAR PURPOSE

A unit provided as an exchange will be subject to the warranty of the original unit. The length of the warranty governing the exchanged unit will remain calculated by reference to the purchase date of the original unit.

This warranty gives you certain legal rights which may change from state to state. Your state may also have other rights you may be entitled to that are not listed within this warranty.

Contact Information

Address

Champion Power Equipment, Inc.
Customer Service
10006 Santa Fe Springs Rd.
Santa Fe Springs, CA 90670

Customer Service

Mon – Fri 8:30 AM – 5:00 PM (PST/PDT)
Toll Free: 1-877-338-0999
Fax no.: 1-562-236-9429

Technical Service

Mon – Fri 8:30 AM – 5:00 PM (PST/PDT)
Toll Free: 1-877-338-0999
tech@championpowerequipment.com