



OWNER'S MANUAL & OPERATING INSTRUCTIONS



3250 Starting Watts / 2850 Rated Watts

PORTABLE GENERATOR



MODEL NUMBER
46592

SAVE THESE INSTRUCTIONS
Important Safety Instructions
are included in this manual.

MADE IN CHINA
REV 46592-20110720

10006 Santa Fe Springs Road
Santa Fe Springs CA 90670
USA / 1-877-338-0999
www.championpowerequipment.com

Have questions or need assistance?

Do not return this product to the store!

WE ARE HERE TO HELP!

Visit our website:

www.championpowerequipment.com

for more info:

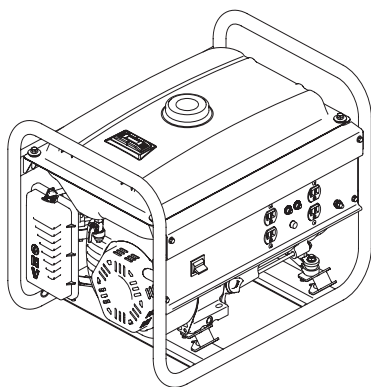
- Product Info & Updates
- Tech Bulletins
- Frequently Asked Questions
- Product Registration

– or –

Call our Customer Care Team Toll-Free at:

1-877-338-0999

24/7 Tech Support: (562) 204-1188



3250 Starting Watts / 2850 Rated Watts PORTABLE GENERATOR

TABLE OF CONTENTS

Introduction	1	Specifications	13
Introduction	1	Engine Specifications	13
Portable Power Generator	1	Generator Specifications	13
Accessories	1	Fuel	13
This Booklet	1	Oil	13
Manual Conventions	2	Spark Plugs	13
Safety Rules	3	Valve Clearance	13
Controls and Features	5	Wiring Diagram	14
Generator	5	Parts Diagram	15
Power Panel	6	Parts List	16
Assembly	7	Engine Parts Diagram	17
Remove the Generator from the Shipping Carton	7	Engine Parts List	18
Add Engine Oil	7	Troubleshooting	19
Add Fuel	7	Warranty	20
Grounding	8	Warranty Qualifications	20
Operation	8	Repair/Replacement Warranty	20
Generator Location	8	Do Not Return The Unit To	
Grounding	8	The Place Of Purchase	20
Surge Protection	8	Warranty Exclusions	20
Starting the Engine	8	Normal Wear	20
Connecting Electrical Loads	9	Installation, Use and Maintenance	20
Stopping the Engine	9	Other Exclusions	20
Do Not Overload Generator	9	Limits of Implied Warranty	
Capacity	9	and Consequential Damage	20
Power Management	9	Contact Information	20
Wattage Reference Chart	10	Address	20
Maintenance and Storage	11	Customer Service	20
Engine Maintenance	11	Technical Service	20
Oil	11		
Spark Plugs	11		
Air Filter	11		
Cleaning	12		
Adjustments	12		
Maintenance Schedule	12		
Generator Maintenance	12		
Storage	12		
Generator Storage	12		

INTRODUCTION

Introduction

Congratulations on your purchase of a Champion Power Equipment generator. CPE designs and builds generators to strict specifications. With proper use and maintenance, this generator will bring years of satisfying service.

Portable Power Generator

This unit is a gasoline engine driven, alternating current (AC) generator. It is designed to supply electrical power for lighting, appliances, tools and similar equipment.

Accessories

Champion Power Equipment manufactures and sells accessories designed to help you get the most from your purchase. To find out more about our covers, power cables and storm kits, please visit our web site at:
→ www.championpowerequipment.com

This Booklet

Every effort has been made to ensure the accuracy and completeness of the information in this manual. We reserve the right to change, alter and/or improve the product and this document at any time without prior notice.

Record the model and serial numbers as well as date and place of purchase for future reference. Have this information available when ordering parts and when making technical or warranty inquiries.

Champion Power Equipment Support	
1-877-338-0999	
Model Number	
46592	
Serial Number	
Date of Purchase	
Purchase Location	
For Oil Type see 'Add Engine Oil' section. For Fuel Type see 'Add Fuel' section.	

This manual uses the following symbols to help differentiate between different kinds of information. The safety symbol is used with a key word to alert you to potential hazards in operating and owning power equipment.

Follow all safety messages to avoid or reduce the risk of serious injury or death.

 **DANGER**

DANGER indicates an imminently hazardous situation which, if not avoided, **will** result in death or serious injury.

 **WARNING**

WARNING indicates a potentially hazardous situation which, if not avoided, **could** result in death or serious injury.

 **CAUTION**

CAUTION indicates a potentially hazardous situation which, if not avoided, **may** result in minor or moderate injury.

CAUTION

CAUTION used without the safety alert symbol indicates a potentially hazardous situation which, if not avoided, **may** result in property damage.

 **NOTE**

If you have questions regarding your generator, we can help. Please call our help line at **1-877-338-0999**

SAFETY RULES

WARNING

Read this manual thoroughly before operating your generator. Failure to follow instructions could result in serious injury or death.

WARNING

The engine exhaust from this product contains chemicals known to the state of California to cause cancer, birth defects, or other reproductive harm.

DANGER

Generator exhaust contains carbon monoxide, a colorless, odorless, poison gas. Breathing carbon monoxide will cause nausea, dizziness, fainting or death. If you start to feel dizzy or weak, get to fresh air immediately.

Operate generator outdoors only in a well ventilated area.

DO NOT operate the generator inside any building, including garages, basements, crawlspaces and sheds, enclosure or compartment, including the generator compartment of a recreational vehicle. DO NOT allow exhaust fumes to enter a confined area through windows, doors, vents or other openings.

DANGER CARBON MONOXIDE: using a generator indoors **CAN KILL YOU IN MINUTES.**

DANGER

Rotating parts can entangle hands, feet, hair, clothing and/or accessories.
Traumatic amputation or severe laceration can result.

Keep hands and feet away from rotating parts.
Tie up long hair and remove jewelry.
Operate equipment with guards in place.
DO NOT wear loose-fitting clothing, dangling drawstrings or items that could become caught.

DANGER

Generator produces powerful voltage.

DO NOT touch bare wires or receptacles.

DO NOT use electrical cords that are worn, damaged or frayed.

DO NOT operate generator in wet weather.

DO NOT allow children or unqualified persons to operate or service the generator

Use a ground fault circuit interrupter (GFCI) in damp areas and areas containing conductive material such as metal decking.

Use approved transfer equipment to isolate generator from your electric utility and Notify your utility company before connecting your generator to your power system.

WARNING

Sparks can result in fire or electrical shock.

When servicing the generator:

Disconnect the spark plug wire and place it where it cannot contact the plug.

DO NOT check for spark with the plug removed.

Use only approved spark plug testers.

WARNING

Running engines produce heat. Severe burns can occur on contact.

Combustible material can catch fire on contact.

DO NOT touch hot surfaces.

Avoid contact with hot exhaust gases.

Allow equipment to cool before touching.

Maintain at least three feet of clearance on all sides to ensure adequate cooling.

Maintain at least five feet of clearance from combustible materials.

⚠ DANGER

Fuel and fuel vapors are highly flammable and extremely explosive.
Fire or explosion can cause severe burns or death.
Unintentional startup can result in entanglement, traumatic amputation or laceration.

When adding or removing fuel:

Turn the generator off and let it cool for at least two minutes before removing the fuel cap. Loosen the cap slowly to relieve pressure in the tank.
Only fill or drain fuel outdoors in a well-ventilated area. DO NOT overfill the fuel tank.
Always keep fuel away from sparks, open flames, pilot lights, heat and other sources of ignition.
DO NOT light or smoke cigarettes.

When starting the generator:

DO NOT attempt to start a damaged generator.
Make certain that the gas cap, air filter, spark plug, fuel lines and exhaust system are properly in place.
Allow spilled fuel to evaporate fully before attempting to start the engine.
Make certain that the generator is resting firmly on level ground.

When operating the generator:

DO NOT move or tip the generator during operation.
DO NOT tip the generator or allow fuel or oil to spill.

When transporting or servicing the generator:

Make certain that the fuel shutoff valve is in the off position and the fuel tank is empty.
Disconnect the spark plug wire.
When storing the generator:
Store away from sparks, open flames, pilot lights, heat and other sources of ignition.

⚠ WARNING

Operation of this equipment may create sparks that can start fires around dry vegetation.

A spark arrestor may be required. The operator should contact local fire agencies for laws or regulations relating to fire prevention requirements.

⚠ WARNING

Rapid retraction of the starter cord will pull hand and arm towards the engine faster than you can let go.
Unintentional startup can result in entanglement, traumatic amputation or laceration.
Broken bones, fractures, bruises or sprains could result.

When starting engine, pull the starter cord slowly until resistance is felt and then pull rapidly to avoid kickback.
DO NOT start or stop the engine with electrical devices plugged in.

⚠ CAUTION

Exceeding the generator's running capacity can damage the generator and/or electrical devices connected to it.

DO NOT overload the generator.
Start the generator and allow the engine to stabilize before connecting electrical loads.
Connect electrical equipment in the off position, and then turn them on for operation.
Turn electrical equipment off and disconnect before stopping the generator.
DO NOT tamper with the governed speed.
DO NOT modify the generator in any way.

⚠ CAUTION

Improper treatment or use of the generator can damage it, shorten its life and void your warranty.

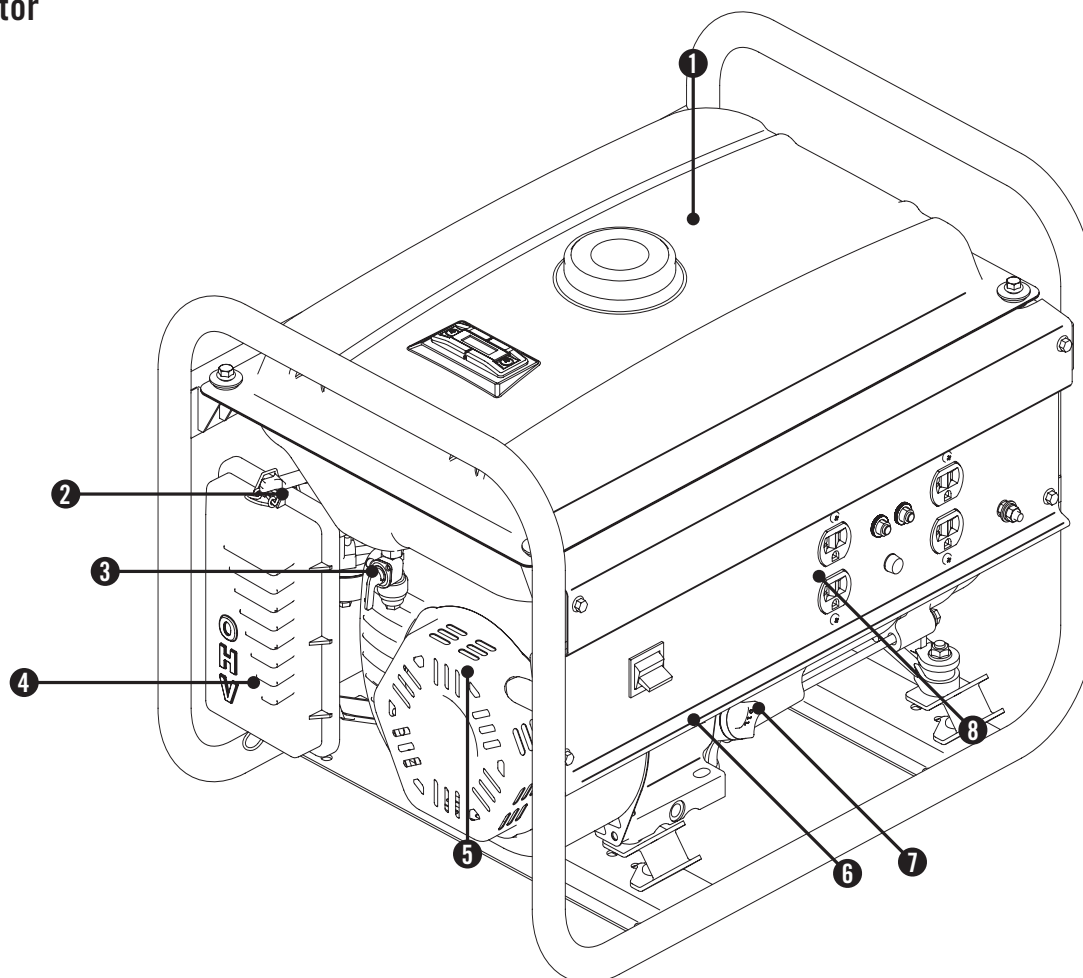
Use the generator only for intended uses.
Operate only on level surfaces.
DO NOT expose generator to excessive moisture, dust, or dirt.
DO NOT allow any material to block the cooling slots.
If connected devices overheat, turn them off and disconnect them from the generator.
DO NOT use the generator if:

- Electrical output is lost
- Equipment sparks, smokes or emits flames
- Equipment vibrates excessively

CONTROLS AND FEATURES

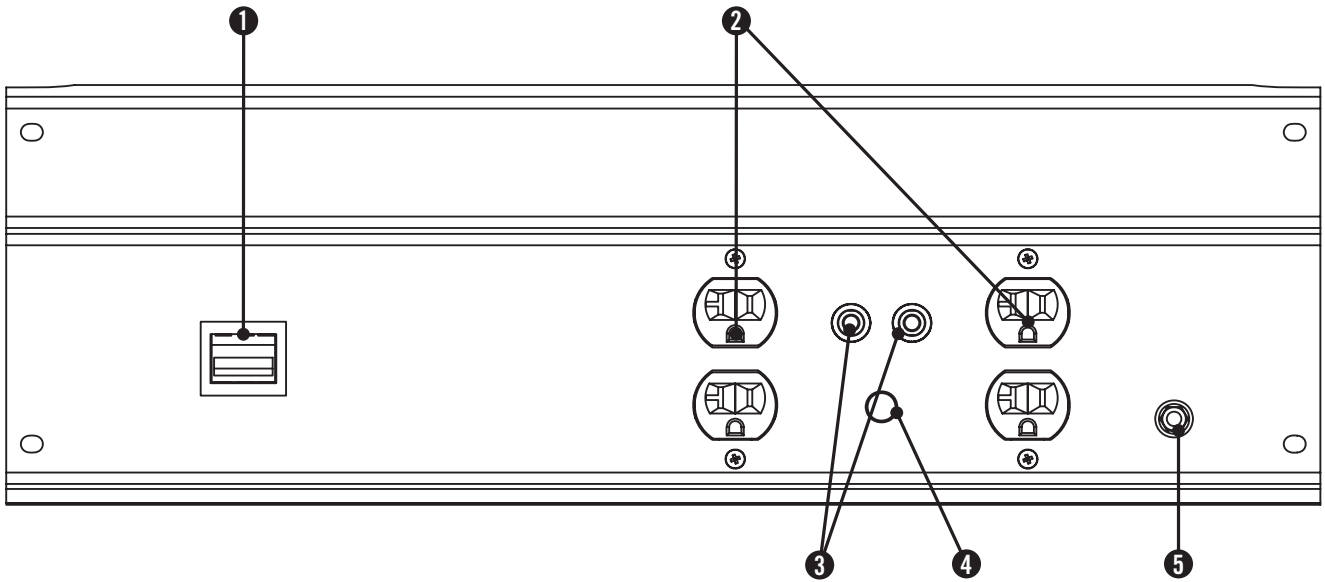
Read this owner's manual before operating your generator. Familiarize yourself with the location and function of the controls and features. Save this manual for future reference.

Generator



- (1) **Fuel Tank** – 4 gallon (15 L) capacity fuel tank.
- (2) **Choke** – Controls choke valve. Used when starting a cold engine.
- (3) **Fuel Valve** – Used to turn fuel supply on and off to engine.
- (4) **Air Cleaner** – Protects the engine by filtering dust and debris from the intake air.
- (5) **Recoil Starter** – Used to manually start the engine.
- (6) **Low Oil Sensor** – Senses the level of the oil in the crankcase and shuts the engine down if the level falls too low.
- (7) **Oil Filler Cap** – Check and fill engine oil level.
- (8) **Power Panel** – See “Power Panel” section.

Power Panel



- (1) **Engine Switch** – Used to turn the generator on and off.
- (2) **120 Volt AC, 20 Amp Duplex (2)**
(NEMA 5-20R) – Each receptacle may be used to supply electrical power for the operation of 120 Volt AC, 20 Amp, single phase 60 Hz electrical loads.
- (3) **Circuit Breaker(s)** – Protects the generator against electrical overloads. Push to reset breaker.
- (4) **AC Output Indicator** – Indicates when power is being delivered to receptacle.
- (5) **Ground Terminal** – Consult an electrician for local grounding regulations.

ASSEMBLY

Your generator requires some assembly. This unit ships from our factory without oil. It must be properly serviced with fuel and oil before operation.

If you have any questions regarding the assembly of your generator, call our help line at 1-877-338-0999. Please have your serial number and model number available.

Remove the Generator from the Shipping Carton

1. Set the shipping carton on a solid, flat surface.
2. Remove everything from the carton except the generator.
3. Carefully cut each corner of the box from top to bottom. Fold each side flat on the ground to provide a surface area to install the wheel kit and support leg.

Add Engine Oil

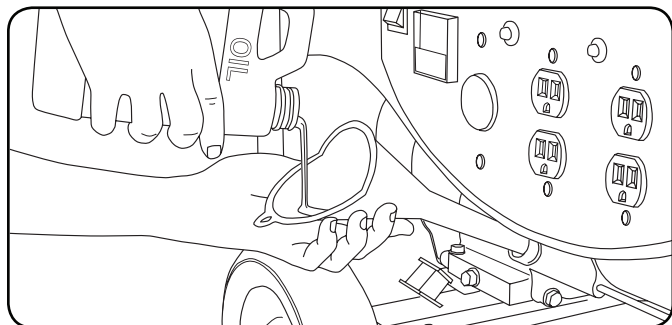
! CAUTION

DO NOT attempt to crank or start the engine before it has been properly filled with the recommended type and amount of oil. Damage to the generator as a result of failure to follow these instructions will void your warranty.

NOTE

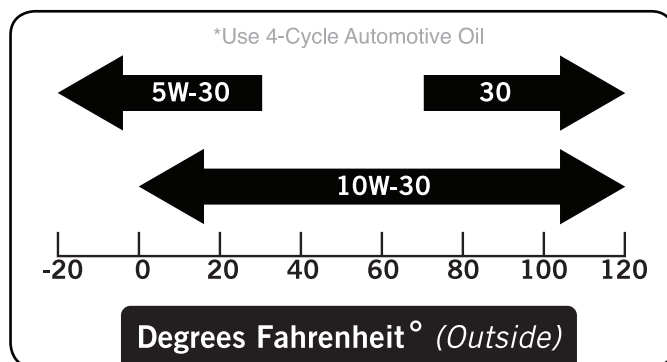
The recommended oil type is 10W-30 4-cycle automotive oil.

1. Place the generator on a flat, level surface.



2. Remove oil fill cap/dipstick to add oil.
3. Add 0.63 qt (0.6 L) of oil and replace oil fill cap/dipstick. See "Specifications" pages for oil recommendations based on operating conditions.
4. Check engine oil level daily and add as needed.

Add Engine Oil Cont'd.



CAUTION

The engine is equipped with a low-oil-shutoff and will stop when the oil level in the crankcase falls below the threshold level.

NOTE

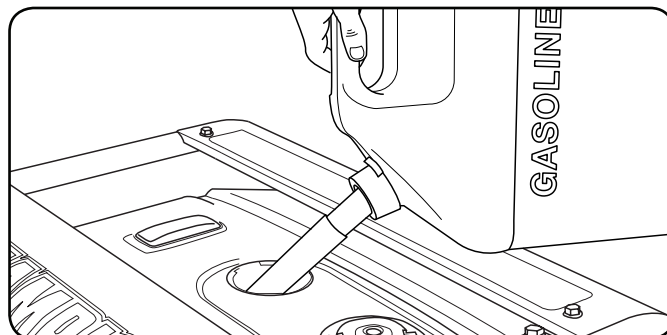
Check oil often during the break-in period. Refer to the Maintenance section for recommended service intervals.

NOTE

The generator rotor has a sealed, pre-lubricated ball bearing that requires no additional lubrication for the life of the bearing.

Add Fuel

1. Use clean, fresh, regular unleaded fuel with a minimum octane rating of 85 and an ethanol content of less than 10% by volume.
2. DO NOT mix oil with fuel.
3. Clean the area around the fuel cap.
4. Remove the fuel cap.
5. Slowly add fuel to the tank. DO NOT overfill. Allow approximately ¼ inch of space for fuel expansion.



6. Screw on the fuel cap and wipe away any spilled fuel. Clean the area around the fuel cap.

Add Fuel Cont'd.

CAUTION

Use regular unleaded gasoline with a minimum octane rating of 85.

- DO NOT mix oil and gasoline.
- Fill tank to approximately ¼ inch below the top of the tank to allow for fuel expansion.
- DO NOT fill fuel tank indoors.
- DO NOT fill fuel tank when the engine is running or hot.
- DO NOT overfill the fuel tank.
- DO NOT light cigarettes or smoke when filling the fuel tank.

Grounding

Your generator must be properly connected to an appropriate ground to help prevent electric shock.

WARNING

Failure to properly ground the generator can result in electric shock.

A ground terminal connected to the frame of the generator has been provided on the power panel. For remote grounding, connect a length of heavy gauge (12 AWG minimum) copper wire between the generator ground terminal and a copper rod driven into the ground. We strongly recommend that you consult with a qualified electrician to ensure compliance with local electrical codes.

Generator Location

Please consult your local authority. In some areas, generators must be registered with the local utility. Generators used at construction sites may be subject to additional rules and regulations.

This generator must have at least five feet of clearance from combustible material. Leave at least three feet of clearance on all sides of the generator to allow for adequate cooling, maintenance and servicing.

Place the generator in a well-ventilated area. DO NOT place the generator near vents or intakes where exhaust fumes could be drawn into occupied or confined spaces. Carefully consider wind and air currents when positioning generator.

Grounding

The generator system ground connects the frame to the ground terminals on the power panel.

- The generator (stator winding) is isolated from the frame and from the AC receptacle ground pin.
- Electrical devices that require a grounded receptacle pin connection will not function if the receptacle ground pin is not functional.

Surge Protection

CAUTION

Voltage fluctuation may impair the proper functioning of sensitive electronic equipment.

Electronic devices, including computers and many programmable appliances use components that are designed to operate within a narrow voltage range and may be affected by momentary voltage fluctuations. While there is no way to prevent voltage fluctuations, you can take steps to protect sensitive electronic equipment.

1. *Install UL1449, CSA-listed, plug-in surge suppressors on the outlets feeding your sensitive equipment.*
Surge suppressors come in single- or multi-outlet styles. They're designed to protect against virtually all short-duration voltage fluctuations.

Starting the Engine

1. Make certain the generator is on a flat, level surface.
2. Disconnect all electrical loads from the generator.
Never start or stop the generator with electrical devices plugged in or turned on.
3. Turn the Fuel Valve to the "ON" position.
4. Flip the ignition switch to the "ON" position.
5. Move the choke lever to the "CHOKE" position.
6. RECOIL START: Pull the starter cord slowly until resistance is felt and then pull rapidly
7. Do not over-choke. As soon as engine starts, move the choke lever to the "RUN" position.

OPERATION

Starting the Engine Cont'd.

NOTE

Keep choke lever in “Choke” position for only 1 pull of the recoil starter. After first pull, move choke lever to the “Run” position for up to the next 3 pulls of the recoil starter. Too much choke leads to sparkplug fouling/engine flooding due to the lack of incoming air. This will cause the engine not to start.

NOTE

If the engine starts but does not run make certain that the generator is on a flat, level surface. The engine is equipped with a low oil sensor that will prevent the engine from running when the oil level falls below a critical threshold.

Connecting Electrical Loads

1. Let the engine stabilize and warm up for a few minutes after starting
2. Plug in and turn on the desired 120 Volt AC single phase, 60 Hz electrical loads.
 - DO NOT connect 3-phase loads to the generator.
 - DO NOT connect 50 Hz loads to the generator.
 - DO NOT overload the generator.

NOTE

Connecting a generator to your electric utility company's power lines or to another power source may be against the law. In addition this action, if done incorrectly, could damage your generator and appliances and could cause serious injury or even death to you or a utility worker who may be working on nearby power lines. If you plan to run a portable electric generator during an outage, please notify your electric utility company immediately and remember to plug your appliances directly into the generator. Do not plug the generator into any electric outlet in your home. Doing so could create a connection to the utility company power lines. You are responsible for ensuring that your generator's electricity does not feed back into the electric utility power lines.

If the generator will be connected to a building electrical system, consult your local utility company or a qualified electrician. Connections must isolate generator power from utility power and must comply with all applicable laws and codes.

Stopping the Engine

1. Turn off and unplug all electrical loads. Never start or stop the generator with electrical devices plugged in or turned on.
2. Let the generator run at no-load for several minutes to stabilize internal temperatures of the engine and generator.
3. Press the ignition switch to the “OFF” position.
4. Turn the Fuel Valve to the “OFF” position.

Important: If the generator will be moved or stored turn the Fuel Valve to the “OFF” position and ensure the Ignition Switch on the Power Panel is in the “OFF” position.

Do Not Overload Generator

Capacity

Follow these simple steps to calculate the running and starting watts necessary for your purposes.

1. Select the electrical devices you plan on running at the same time.
2. Total the running watts of these items. This is the amount of power you need to keep your items running.
3. Identify the highest starting wattage of all devices identified in step 1. Add this number to the number calculated in step 2. Surge wattage is the extra burst of power needed to start some electric driven equipment. Following the steps listed under “Power Management” will guarantee that only one device will be starting at a time.

Power Management

Use the following formula to convert voltage and amperage to watts:

$$\text{Volts} \times \text{Amps} = \text{Watts}$$

To prolong the life of your generator and attached devices, follow these steps to add electrical load:

1. Start the generator with no electrical load attached
2. Allow the engine to run for several minutes to stabilize.
3. Plug in and turn on the first item. It is best to attach the item with the largest load first.
4. Allow the engine to stabilize.
5. Plug in and turn on the next item.
6. Allow the engine to stabilize.
7. Repeat steps 5-6 for each additional item.

NOTE

Never exceed the specified capacity when adding loads to the generator.

Wattage Reference Chart

Use the chart to determine approximate wattage requirements for your equipment.

CAUTION

Exceeding specified load capacity can result in damage to the generator.

To determine total wattage necessary to power a device, **ADD Running Watts to Starting Watts**. (A+B). Starting watts can exceed three times the running watts. The values in the following table are approximate. Refer to your tool or appliance for actual wattage consumption.

Item	Running Watts (A)	Starting Watts (B)
Essentials		
Light Bulb 100W	100	
Refrigerator/Freezer	1200	2400
Freezer	500	500
Sump Pump	600	1800
Well Pump 1 HP	2000	4000
Water Heater	4000	
Security System	180	
AM/FM Radio	300	
Garage Door Opener 1/2 HP	500	600
Battery Charger 12V DC	110	
Heating/Cooling		
Air Conditioner 12000 BTU	1700	2500
Fan	300	600
Furnace Fan 1/3 HP	1200	2000
Home Appliances		
Microwave 1000W	1000	
Electric Range - One Element	1500	
Electric Skillet	1250	
Coffee Maker	1500	
Clothes Washer	1200	
Entertainment		
CD/DVD Player / VCR	100	
Stereo Receiver	450	
Television 27"	500	
PC with 15" Monitor	800	
Job Site		
Belt Sander 3"	1000	1500
Bench Grinder 6"	700	1500
Circular Saw	1500	1500
Compressor 1 1/2 HP	2500	2500
Edge Trimmer	500	500
Hand Drill 1/2"	1000	1000
Lawn Mower	1200	1800
Paint Sprayer	600	1200
Table Saw	2000	2000

MAINTENANCE AND STORAGE

The owner/operator is responsible for all periodic maintenance.

⚠ WARNING

Never operate a damaged or defective generator.

⚠ WARNING

Tampering with the factory set governor will void your warranty.

⚠ WARNING

Improper maintenance will void your warranty.

NOTE

Maintenance, replacement, or repair of emission control devices and systems may be performed by any non-road engine repair establishment or individual.

Complete all scheduled maintenance in a timely manner. Correct any issue before operating the generator.

NOTE

For service or parts assistance, contact our help line at **1-877-338-0999**

Engine Maintenance

To prevent accidental starting, remove and ground spark plug wire before performing any service.

Oil

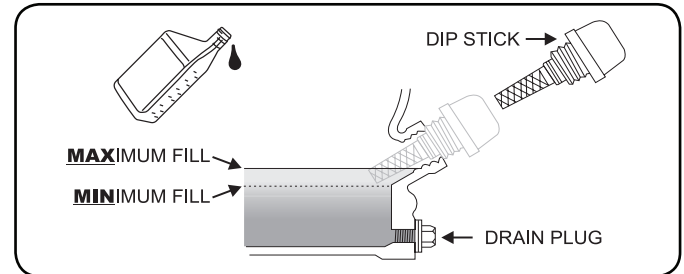
Change oil when the engine is warm. Refer to the oil specification to select the proper grade of oil for your operating environment.

1. Remove the oil drain plug with a 12 mm socket and extension.
2. Allow the oil to drain completely.
3. Replace the drain plug.
4. Remove oil fill cap/dipstick to add oil.
5. Add 0.63 qt (0.6 L) of oil and replace oil fill cap/dipstick.
6. Dispose of used oil at an approved waste management facility.

Oil Cont'd.

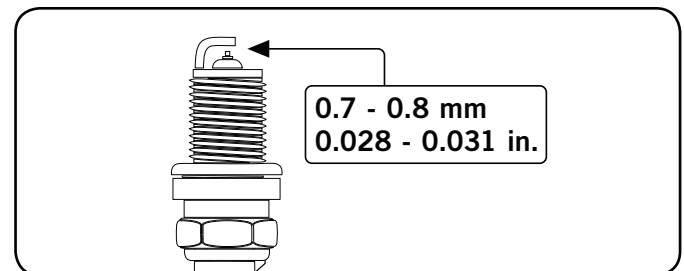
NOTE

Once oil has been added, a visual check should show oil about 1-2 threads from running out of the fill hole. If using the dipstick to check oil level, **DO NOT** screw in the dipstick while checking.



Spark Plugs

1. Remove the spark plug cable from the spark plug.
2. Use the spark plug tool that shipped with your generator to remove the plug.
3. Inspect the electrode on the plug. It must be clean and not worn to produce the spark required for ignition.
4. Make certain the spark plug gap is 0.7 - 0.8mm or (0.028 - 0.031 in.).



5. Refer to the spark plug recommendation chart when replacing the plug.
6. Carefully thread the plug into the engine.
7. Use the spark plug tool to firmly install the plug.
8. Attach the spark plug wire to the plug.

Air Filter

1. Remove the snap-on cover holding the air filter to the assembly.
2. Remove the foam element.
3. Wash in liquid detergent and water. Squeeze thoroughly dry in a clean cloth.
4. Saturate in clean engine oil.
5. Squeeze in a clean, absorbent cloth to remove all excess oil.
6. Place the filter in the assembly.
7. Reattach the air filter cover and snap in place.

Cleaning

⚠ CAUTION

DO NOT spray engine with water.

Water can contaminate the fuel system.

Use a damp cloth to clean exterior surfaces of the engine.
Use a soft bristle brush to remove dirt and oil.
Use an air compressor (25 PSI) to clear dirt and debris from the engine.

Adjustments

The air-fuel mixture is not adjustable. Tampering with the governor can damage your generator and your electrical devices and will void your warranty. CPE recommends that you contact our service line at **1-877-338-0999** for all other service and/or adjustment needs.

Maintenance Schedule

Follow the service intervals indicated in the following maintenance schedule.

Service your generator more frequently when operating in adverse conditions.

Contact our helpline at **1-877-338-0999** to locate the nearest Champion Power Equipment certified service dealer for your generator or engine maintenance needs.

Every 8 hours or daily	
	Check oil level
	Clean around air intake and muffler
First 5 Hours	
	Change oil
Every 50 hours or every season	
	Clean air filter
	Change oil if operating under heavy load or in hot environments
Every 100 hours or every season	
	Change oil
	Clean/Adjust spark plug
	Check/Adjust valve clearance *
	Clean spark arrester
	Clean fuel tank and filter *
Every 3 years	
	Replace fuel line

*To be performed by knowledgeable, experienced owners or Champion Power Equipment certified dealers.

Generator Maintenance

Make certain that the generator is kept clean and stored properly. Only operate the unit on a flat, level surface in a clean, dry operating environment. DO NOT expose the unit to extreme conditions, excessive dust, dirt, moisture or corrosive vapors.

⚠ CAUTION

DO NOT use a garden hose to clean the generator.

Water can enter the generator through the cooling slots and damage the generator windings.

Use a damp cloth to clean exterior surfaces of the generator.
Use a soft bristle brush to remove dirt and oil.
Use an air compressor (25 PSI) to clear dirt and debris from the generator.
Inspect all air vents and cooling slots to ensure that they are clean and unobstructed.

Storage

The generator should be started at least once every 14 days and allowed to run for at least 20 minutes. For longer term storage, please follow these guidelines.

Generator Storage

1. Allow the engine to cool completely before storage.
2. Clean the generator according to the instructions in the Maintenance section.
3. Turn the Fuel Valve to the "OFF" position.
4. Be sure all appliances are disconnected from the generator. Start the engine and let it run until the fuel in the line and the carburetor is consumed and the engine dies.
5. Add a fuel stabilizer into the fuel tank.
6. Change the oil.
7. Remove the spark plug and pour about ½ ounce of oil into the cylinder. Crank the engine slowly to distribute the oil and lubricate the cylinder.
8. Reattach the spark plug.
9. Store the unit in a clean, dry place out of direct sunlight.

SPECIFICATIONS

Engine Specifications

- Engine 196 cc OHV CPE

Generator Specifications

- Rated Wattage 2850 Watts
- Starting Wattage 3250 Watts
- AC Load 120 V
- Phase Single
- Frequency 60 Hz
- Fuel Capacity 4 gallons (15 L)
- Gross Weight 94.2 lbs (42.8 kg)
- Net Weight 87.6 lbs (39.8 kg)
- Height 17.2 inches (43.7 cm)
- Width 16.7 inches (42.5 cm)
- Length 23.2 inches (59.0 cm)

Fuel

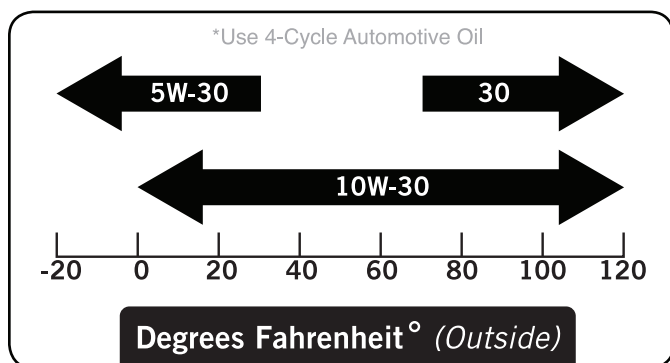
Fuel capacity is 4 gallons (15 L). Use regular unleaded gasoline with a minimum octane rating of 85 and an ethanol content of less than 10% by volume.

Oil

Use 4-Cycle automotive oil.

Oil capacity is 0.63 qt (0.6 L).

Please reference the following chart for recommended oil types for use in the generator.



Spark Plugs

OEM spark plug: NHSP F6TC

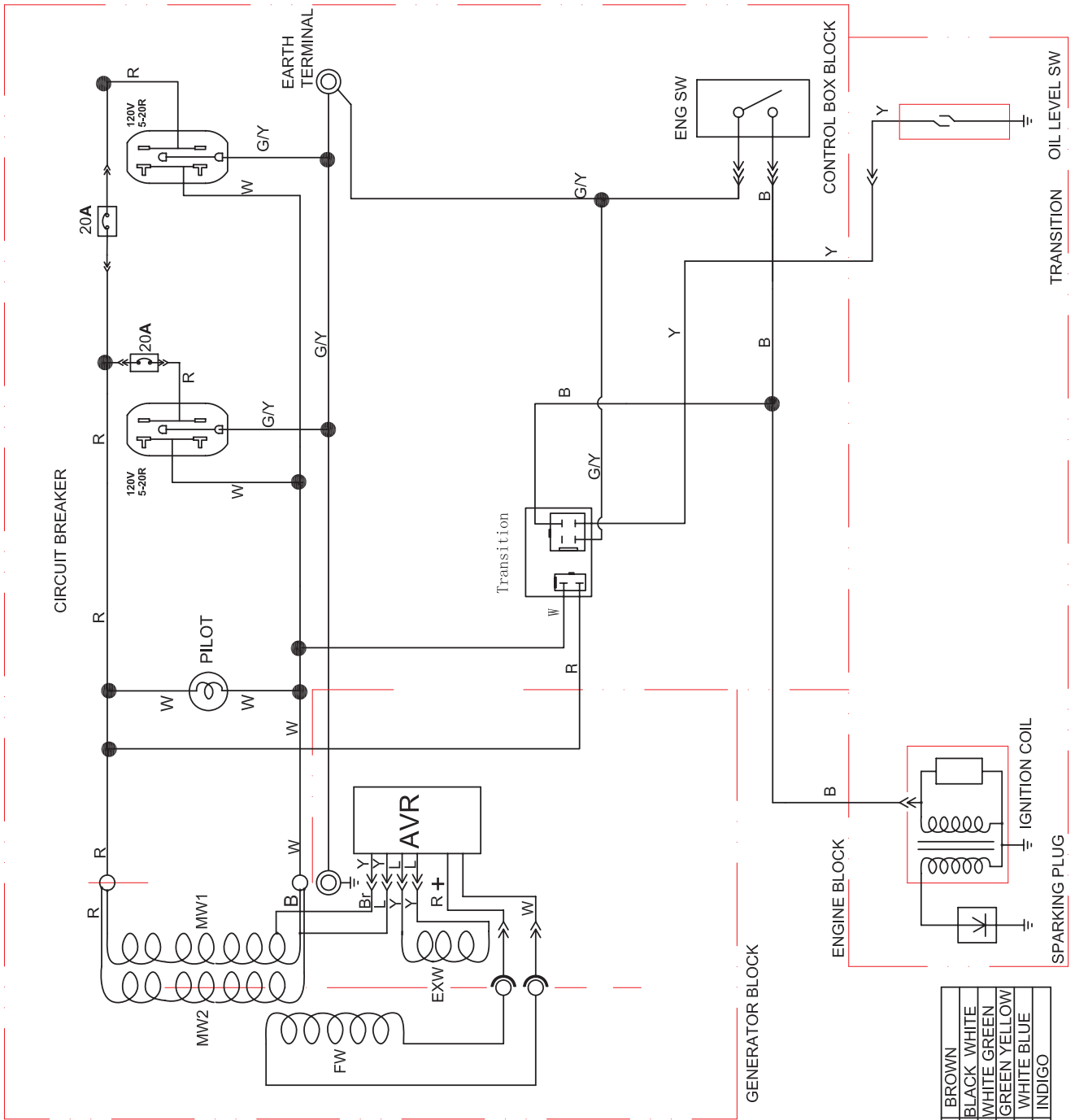
Replacement spark plug: NGK BP6ES or equivalent

Make certain the spark plug gap is 0.7 - 0.8 mm or (0.028 - 0.031 in.).

Maintenance Valve Clearance

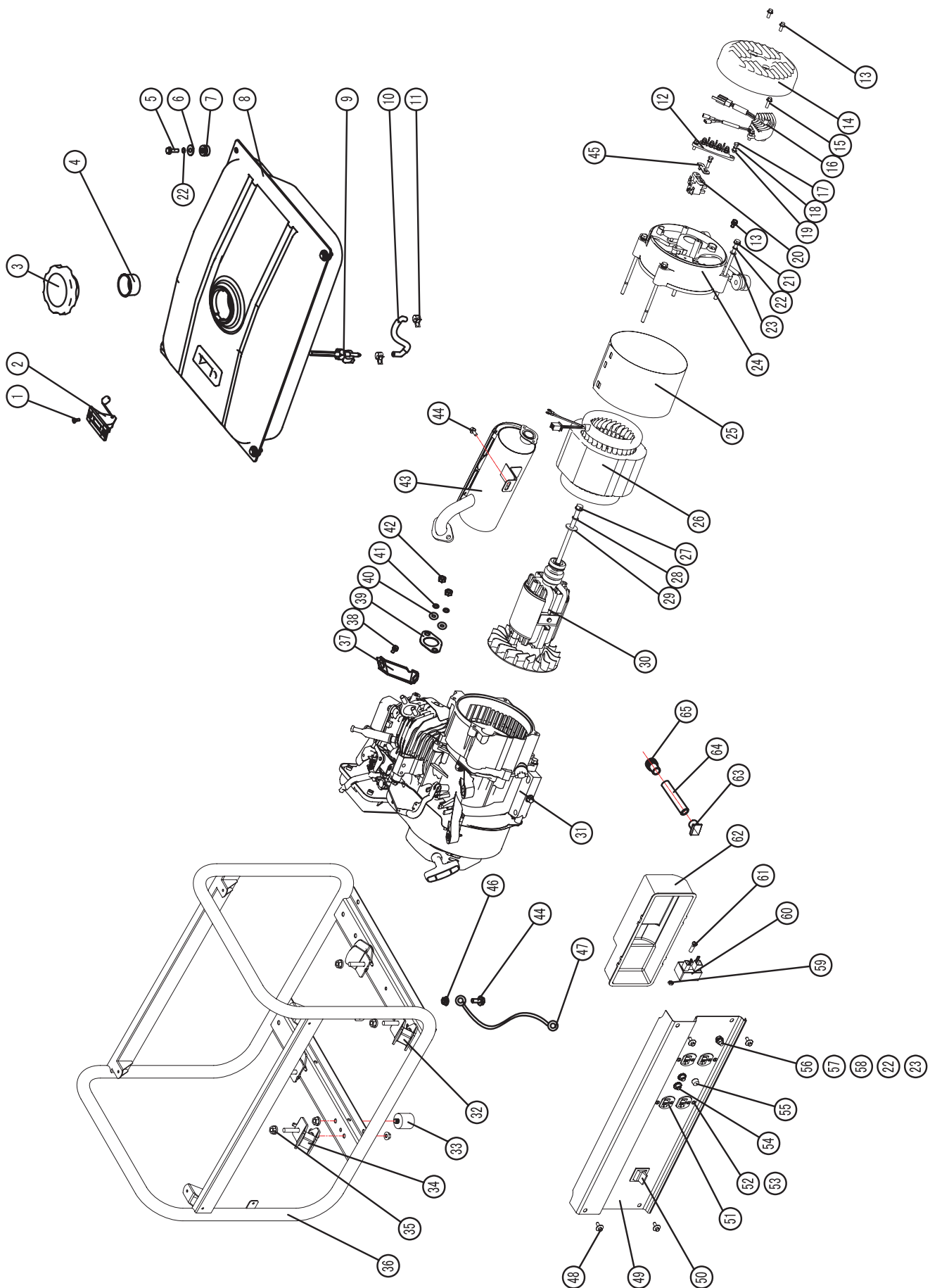
- Intake: 0.13 – 0.17 mm (0.005 – 0.007 in.)
- Exhaust: 0.18 – 0.22 mm (0.007 – 0.009 in.)

Wiring Diagram



SPECIFICATIONS

Parts Diagram

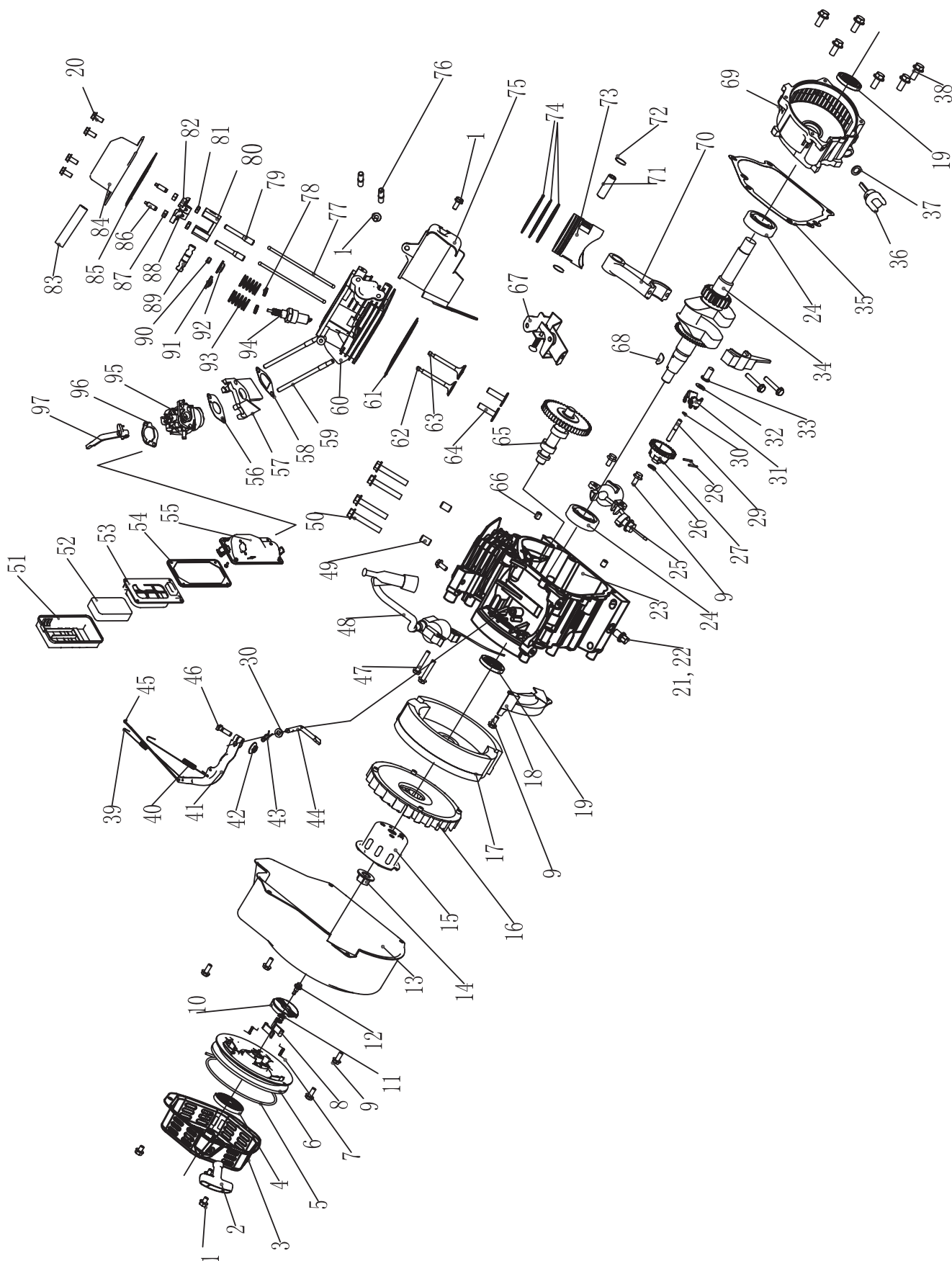


#	Part Number	Description	Qty
1	GB819 M5x10	Screw M5x10	2
2	ST02FD-04140000	Fuel Meter Assy	1
3	ST02FD-04120000-A	Fuel Tank Cap	1
4	ST02FD-04130000	Fuel Filter	1
5	GB5789 M6x20	Flange Bolt M6x20	4
6	ST02FD-04100014	Washer 6.5	4
7	ST02FD-04100010	Tank Rubber	4
8	ST02FD-04110000 (R)	Fuel Tank Mount	1
9	ST02FD-04160000	Fuel Cock	1
10	ST168FD-1160002B	Fuel Line	1
11	ST188FD-1070006A	Clip	2
12	ST02FD-02100010	Terminal	1
13	GB16674 M5x12	Flange Bolt M5x12	3
14	ST02FD-02100004(R)	Generator End Cover	1
15	GB16674 M5x16	Flange Bolt M5x16	2
16	ST02FD-02100007	AVR	1
17	GB5783 M5x16	Bolt M5x16	3
18	GB93 5	Spring Washer 5	4
19	GB97.1 5	Washer 5	2
20	ST02FD-02100009	Brush Assy	1
21	ST02FD-02100001-2.5	Flange BoltM6x158	4
22	GB93 6	Spring Washer 6	10
23	GB97.1 6	Washer 6	6
24	ST02FD-02100003	End Cover	1
25	ST02FD-02100002-2.5	Stator Cover	1
26	504.191200.04	Stator Assy	1
27	ST02FD-02100005-2.5	Flange Bolt M8x233	1
28	GB7244 8	Spring Washer 8	1
29	GB96 8	Washer 8	1
30	504.191100.04	Rotor Comp	1
31	ST168FD-2-G2	Engine	1
32	ST02FD-1151300C-1	Motor mount II	2
33	ST168FD-1151400	Vibration mount	4

#	Part Number	Description	Qty
34	ST02FD-1151300D-1	Motor mount I	2
35	GB6177 M8	Nut M8	12
36	ST02FD-210-2.5	Frame	1
37	ST168FD-1090006	Air Cleaner stay	1
38	GB5789 M6x8	Flange Bolt M6x8	1
39	ST168F-1100200-G	Muffler Gasket	1
40	GB848 8	Washer 8	2
41	GB93 8	Spring Washer 8	2
42	GB6175 M8	Nut M8	2
43	468.101000.02	Muffler	1
44	GB5789 M6x12	Bolt M6x12	2
45	ST02FD-02100008	Plate Pinch	1
46	GB6177 M6	Nut M6	1
47	ST02FD-02100013-14	Ground Wire	1
48	ST02FD-05010703	Flange Bolt M5x13	4
49	2A97(F)	Control Panel	1
50	ST02FD-05702002	Ignition Switch	1
51	ST02FD-05502023	Double Receptacle(5-20R)	2
52	GB9074.8 M4x14	Screw M4x14	4
53	GB6177 M4	Nut M4	4
54	ST02FD-05302001-L20	Circuit Breaker	2
55	ST02FD-05802001	Pilot lamp	1
56	GB5783 M6x22	Bolt M6x22	1
57	GB6175 M6	Nut M6	2
58	GB862 6	Washer 6	1
59	GB6177 M4	Nut M4	1
60	OV01-00000000-1	Voltage Protector	1
61	GB823 M4x14	Screw M4x14	1
62	ST02FD-05202014	Control box	1
63	ST02FD-05212002	Build up	1
64	ST02FD-05212007	Conduit	1
65	ST02FD-05212001	Build up	1

SPECIFICATIONS

Engine Parts Diagram



#	Part Number	Description	Qty
1	GB5789--86-FB6-8	Flange bolt 6*8	5
2	ST160F--1061200	Recoil starter knob	1
3	ST160F--1061100-Q	Recoil starter comp	1
4	ST160F--1061005	Recoil starter spring	1
5	ST160F--1061009	Recoil starter rope	1
6	ST160F--1061001-A	Recoil starter reel	1
7	ST188F--1060006	Return spring	2
8	ST188F--1060005	Starter ratchet Metal	2
9	GB5789--86-FB6-12	Flange bolt M6*12	9
10	ST188F--1060003	Ratchet guide	1
11	ST188F--1060004	Ratchet guide spring	1
12	ST188F--1060002	Setting screw	1
13	ST168F--1080100-G (R)	Fan cover comp	1
14	ST160F--1050010	Nut M14	1
15	ST160F--1060001	Start hub	1
16	ST168F--1080001	Cooling fan	1
17	ST168F--1120100	Fly wheel	1
18	ST168F--1080200	Side plate (II)	1
19	ST168F--1030100	Oil seal	2
20	GB5789--86-FB6-15	Flange bolt M6*15	4
21	ST160F--1030003	Drain plug bolt	2
22	ST160F--1030004	Drain bolt washer	2
23	ST168F-2-1030012-G	Crankcase for USA	1
24	GB/T—276--94	Radial ball bearing 6205	2
25	ST160F-1127000-A	Oil level switch assy	1
26	ST160F--1110108	Governor washer (II)	1
27	ST160F--1110101	Governor weight holder	1
28	ST160F--1110102	Governor weight pin	2
29	ST160F--1110104	Governor shaft	1
30	ST160F--1110103	Governor holder clip	1
31	ST160F--1110107	Governor weight	2
32	ST160F--1110108	Governor washer (II)	1
33	ST160F--1110105-A	Governor cover	1
34	ST168FD-2-1050001-A	Crankshaft comp	1
35	ST168F-1030008-G	Case over packing (no asbestos)	1
36	ST160F--1030001-B	Oil filler cap assembly	1
37	ST160F--1030002	Oil filler cap packing	2
38	GB5789--86-FB8-32	Flange bolt 8*32	6
39	ST168F--1110005	Throttle return spring	1
40	ST168F--1110007	Governor spring	1
41	ST160F--1110003	Governor arm	1
42	GB6177--86	Nut M6	3
43	ST160F--1110008	Lock pin	1
44	ST160F--1110001	Governor arm shaft	1
45	ST168F--1110006	Governor rod	1
46	ST160F--1110004	Governor arm bolt	1
47	GB5789--86-FB6-25	Flange bolt 6*25	2
48	ST160F--1123000-G	Ignition	1
49	152FMD--1001007	Dowel pin 10*16	2
50	GB5789--86-FB8-55	Flange bolt 8*55	4

#	Part Number	Description	Qty
51	ST168FD--1090200-G	Air cleaner cover comp	1
52	ST168FD--1090004	Element	1
53	ST168FD--1090003	Separator	1
54	ST168FD--1090002	Air cleaner seal	1
55	ST168FD--1090004	Air cleaner case comp	1
56	ST160F--1130003-CPE	Carburetor packing (no asbestos)	1
57	ST168F--1130001	Carburetor insulator	1
58	ST168F--1130002-CPE	Insulator packing (no asbestos)	1
59	ST160F--1010001	Stud bolt 6*110	2
60	ST168F-2-1010100-G	Cylinder head comp	1
61	ST168F-2-1030009-G	Cylinder head gasket	1
62	ST168F--1040002	Intake valve	1
63	ST168F--1040006	Exhaust valve	1
64	ST168F-2-1040013	Valve lifter	2
65	ST168F-2-1041000	Camshaft assembly	1
66	ST168F--1030015-G	Dowel pin 9*14	2
67	ST168FD--1111100	Control assy	1
68	GB1099--79	Key	1
69	ST168FD--1030007-G	Crankcase cover	1
70	ST168F--1050100	Connecting rod comp	1
71	ST168F--1050003	Piston pin	1
72	ST168F--1050004	Piston pin clip	2
73	ST168F-2-1050005	Piston	1
74	ST168F--1050007	First ring set	1
74	ST168F--1050006	Second ring set	1
74	ST168F--1050200	Ring comp	1
75	ST168F--1080002-G	Shroud comp (I)	1
76	GB900--88	Stud bolt	2
77	ST168F--1040005	Push rod	2
78	ST168-1040014-A	Oil seal	2
79	ST168F--1040027	Pivot bolt	2
80	ST168F--1040026	Valve rocker arm	1
81	GB6177--86-N6	Nut M6	2
82	ST168F--1040023	Exhaust rocker	1
83	ST160F--1020001	Breather tube	1
84	ST168F--1020100-C	Head over comp	1
85	ST160F--1020002-A	Head over packing	1
86	ST168F--1040024	Rectify bolt	2
87	ST168F--1040025	Locknut	2
88	ST168F--1040022	Entrance rocker	1
89	ST168F--1040021	Rocker axes	1
90	ST160F--1040008	Valve rotator	1
91	ST160F--1040001	Intake valve spring retainer	1
92	ST160F--1040007	Exhaust valve spring retainer	1
93	ST160F--1040003	Valve spring	2
94	ST160F--1124000	Spark plug	1
95	ST168FD-2-1131000	Carburetor	1
96	ST168FD--1130005-CPE	Packing	1
97	ST02FD-1151201A	Choke lever comp	1

TROUBLESHOOTING

Problem	Cause	Solution
Generator will not start	No fuel	Add fuel
	Faulty spark plug	Replace spark plug
	Unit loaded during start up	Remove load from unit
Generator will not start;	Low oil level	Fill crankcase to the proper level
		Place generator on a flat, level surface
Generator starts but runs roughly	Choke in the wrong position.	Adjust choke.
	Spark plug wire loose	Attach wire to spark plug
Generator shuts down during operation	Out of fuel	Fill fuel tank
	Low oil level	Fill crankcase to the proper level. Place generator on a flat, level surface
Generator cannot supply enough power or overheating	Generator is overloaded	Review load and adjust. See "Power Management"
	Insufficient ventilation	Check for air restriction. Move to a well ventilated area
No AC output	Cable not properly connected	Check all connections
	Connected device is defective	Replace defective device
	Circuit breaker is open	Reset circuit breaker
	Faulty brush assembly	Replace brush assembly (Service Center)
	Faulty AVR (auto voltage regulator)	Replace AVR (Service Center)
	Loose wiring	Inspect and tighten wiring connections
	Other	Contact the help line.
Generator gallops	Engine governor defective	Contact the help line
Repeated circuit breaker tripping	Overload	Review load and adjust. See "Power Management"
	Faulty cords or device	Check for damaged, bare or frayed wires. Replace defective device

For further technical support:

Technical Service

Mon – Fri 8:30 AM – 5:00 PM (PST/PDT)

Toll Free: 1-877-338-0999

tech@championpowerequipment.com

WARRANTY

CHAMPION POWER EQUIPMENT
2 YEAR LIMITED WARRANTY

Warranty Qualifications

Champion Power Equipment (CPE) will register this warranty upon receipt of your Warranty Registration Card and a copy of your sales receipt from one of CPE's retail locations as proof of purchase.

Please submit your warranty registration and your proof of purchase within ten (10) days of the date of purchase.

Repair/Replacement Warranty

CPE warrants to the original purchaser that the mechanical and electrical components will be free of defects in material and workmanship for a period of one year (parts and labor) and two years (parts) from the original date of purchase (90 days (parts and labor) and 180 days (parts) for commercial & industrial use). Transportation charges on product submitted for repair or replacement under this warranty are the sole responsibility of the purchaser. This warranty only applies to the original purchaser and is not transferable.

Do Not Return The Unit To The Place Of Purchase

Contact CPE's Technical Service and CPE will troubleshoot any issue via phone or e-mail. If the problem is not corrected by this method, CPE will, at its option, authorize evaluation, repair or replacement of the defective part or component at a CPE Service Center. CPE will provide you with a case number for warranty service. Please keep it for future reference. Repairs or replacements without prior authorization, or at an unauthorized repair facility, will not be covered by this warranty.

Warranty Exclusions

This warranty does not cover the following repairs and equipment:

Normal Wear

Generators need periodic parts and service to perform well. This warranty does not cover repair when normal use has exhausted the life of a part or the equipment as a whole.

Installation, Use and Maintenance

This warranty will not apply to parts and/or labor if this generator is deemed to have been misused, neglected, involved in an accident, abused, loaded beyond the generator's limits, modified, installed improperly or connected incorrectly to any electrical component.

Installation, Use and Maintenance Cont'd.

Normal maintenance such as spark plugs, air filters, adjustments, fuel system cleaning and obstruction due to buildup is not covered by this warranty.

Other Exclusions

This warranty excludes:

- Cosmetic defects such as paint, decals, etc.
- Wear items such as filter elements, o-rings, etc.
- Accessory parts such as starting batteries, and storage covers.
- Failures due to acts of God and other force majeure events beyond the manufacturer's control.
- Problems caused by parts that are not original Champion Power Equipment parts.

This warranty does not apply to generators used for prime power in place of a utility.

Limits of Implied Warranty and Consequential Damage

Champion Power Equipment disclaims any obligation to cover any loss of time, use of this product, freight, or any incidental or consequential claim by anyone from using this generator. THIS WARRANTY IS IN LIEU OF ALL OTHER WARRANTIES, EXPRESS OR IMPLIED, INCLUDING WARRANTIES OF MERCHANTABILITY OR FITNESS FOR A PARTICULAR PURPOSE.

A unit provided as an exchange will be subject to the warranty of the original unit. The length of the warranty governing the exchanged unit will remain calculated by reference to the purchase date of the original unit.

This warranty gives you certain legal rights which may change from state to state. Your state may also have other rights you may be entitled to that are not listed within this warranty.

Contact Information**Address**

Champion Power Equipment, Inc.
Customer Service
10006 Santa Fe Springs Rd.
Santa Fe Springs, CA 90670
www.championpowerequipment.com

Customer Service

Mon – Fri 8:30 AM – 5:00 PM (PST/PDT)
Toll Free: 1-877-338-0999
info@championpowerequipment.com
Fax no.: 1 (562) 236-9429

Technical Service

Mon – Fri 8:30 AM – 5:00 PM (PST/PDT)
Toll Free: 1-877-338-0999
tech@championpowerequipment.com
24/7 Tech Support: (562) 204-1188