

CHAMPION

POWER EQUIPMENT™

OWNER'S MANUAL & OPERATING INSTRUCTIONS



8,000 lb. WINCH KIT



MODEL NUMBER

18090

SAVE THESE INSTRUCTIONS
Important Safety Instructions
are included in this manual.

MADE IN CHINA
REV 18090-20130427

10006 Santa Fe Springs Road
Santa Fe Springs CA 90670
USA / 1-877-338-0999
www.championpowerequipment.com

Have questions or need assistance?

Do not return this product to the store!

WE ARE HERE TO HELP!

Visit our website:

www.championpowerequipment.com

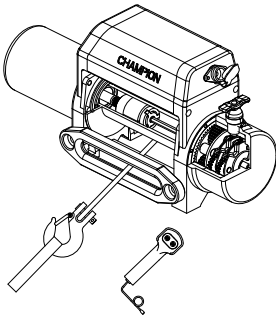
for more info:

- Product Info & Updates
- Tech Bulletins
- Frequently Asked Questions
- Product Registration

– or –

Call our Customer Care Team Toll-Free at:

1-877-338-0999



8,000 lb. WINCH KIT

TABLE OF CONTENTS

Introduction	1	Specifications	11
Introduction	1	Performance Specifications	11
This Booklet	1	Troubleshooting	12
Accessories	1	Parts Diagram	13
Manual Conventions	2	Parts List	14
Safety Rules	3	Warranty	15
Controls and Features	5	Warranty Qualifications	15
Winch	5	Repair/Replacement Warranty	15
Assembly	6	Do Not Return The Unit To The Place Of Purchase	15
Assembling and wiring the Winch	6	Warranty Exclusions	15
Operation	7	Limits of Implied Warranty And Consequential Damage	15
General Tips for Safe Operation	7	Contact Information	15
Self Recovery	7	Address	15
Synthetic Rope Abrasion Sleeve	8	Customer Service	15
Winching Techniques A-Z	9	Technical Service	15
Maintenance	10		
Lubrication	10		
Cable Assembly Replacement	10		
Synthetic Rope	10		

INTRODUCTION

Introduction

Congratulations on your purchase of a Champion Power Equipment winch. CPE designs and builds winches to strict specifications. With proper use and maintenance, this winch will bring years of satisfying service.

This Booklet

Every effort has been made to ensure the accuracy and completeness of the information in this manual. We reserve the right to change, alter and/or improve the product and this document at any time without prior notice.

Accessories

Champion Power Equipment manufactures and sells accessories designed to help you get the most from your purchase. To find out more about our covers, tree savers, hooks, fairleads, etc., please visit our web site at:

→ www.championpowerequipment.com

Record the model and serial numbers as well as date and place of purchase for future reference. Have this information available when ordering parts and when making technical or warranty inquiries.

Champion Power Equipment Support
1-877-338-0999
Model Number
18090
Serial Number
Date of Purchase
Purchase Location

This manual uses the following symbols to help differentiate between different kinds of information. The safety symbol is used with a key word to alert you to potential hazards in operating and owning power equipment.

Follow all safety messages to avoid or reduce the risk of serious injury or death.

 **DANGER**

DANGER indicates an imminently hazardous situation which, if not avoided, **will** result in death or serious injury.

 **WARNING**

WARNING indicates a potentially hazardous situation which, if not avoided, **could** result in death or serious injury.

 **CAUTION**

CAUTION indicates a potentially hazardous situation which, if not avoided, **may** result in minor or moderate injury.

CAUTION

CAUTION used without the safety alert symbol indicates a potentially hazardous situation which, if not avoided, **may** result in property damage.

 **NOTE**

If you have questions regarding your winch, we can help. Please call our help line at **1-877-338-0999**

SAFETY RULES

⚠ WARNING

Read this manual thoroughly before operating your winch. Failure to follow instructions could result in serious injury or death.

⚠ WARNING

Do not exceed the rated capacity.

⚡ DANGER

Do not use this winch for lifting or moving people or animals.

⚡ DANGER

Keep yourself and others a safe distance to the side of the cable when under tension.

⚡ DANGER

Never step over a cable or near a cable under load.

⚠ WARNING

The synthetic rope may break before the motor stalls. For heavy loads at or near rated capacity, use a pulley block/snatch block to reduce the load on the synthetic rope.

⚠ WARNING

Do not move the vehicle to pull a load (towing) on the winch cable. This could result in cable breakage.

⚠ WARNING

Pull only on areas of the vehicle as specified by the vehicle manufacturer.

⚠ WARNING

Do not use the winch to secure or hold a vehicle for a long period of time. Do not use the winch to secure a vehicle for transport.

⚠ WARNING

Disconnect the remote control and battery leads when not in use.

⚠ WARNING

Avoid "shock loads" by using the control switch intermittently to take up the slack in the synthetic rope. "Shock loads" can far exceed the rate capacity for the synthetic rope and drum.

Do not accelerate your vehicle while winching. Loss of traction can cause a shock load on the cable.

⚠ WARNING

Batteries contain acid and produce explosive gases.

Keep sparks, flames and cigarettes away from batteries at all times. Wear safety glasses and protect the eyes at all times. Do not lean over the batteries during operation.

⚠ WARNING

When re-spooling the cable, ensure that the cable spools in the under-wind position with the cable entering the drum from the bottom, not the top.

To re-spool correctly, and while wearing gloves, keep a slight load on the cable while pushing the remote button to draw in the cable. Walk toward the winch not allowing the cable to slide through your hands. Do not let your hands get within 12" of the winch while re-spooling. Turn off the winch and repeat the procedure until a few feet of cable are left. Disconnect the remote control and finish spooling by rotating the drum by hand with the clutch disengaged. Keep hands clear of the fairlead and drum while the winch is under power .

⚠ WARNING

Do not use as a hoist. Do not use for overhead lifting.

⚠ CAUTION

Use gloves to protect hands when handling the cable. Never let the cable slide through your hands.

⚠ CAUTION

Do not wrap the cable around any object and hook it back onto itself.

⚠ CAUTION

Apply blocks to the wheels of the vehicle when on an incline.

⚠ CAUTION

Duration of winching pulls should be kept as short as possible.

If the motor becomes uncomfortably hot to the touch, stop winching immediately and let it cool down for a few minutes. Do not pull for more than one minute at or near the rated load.

⚠ CAUTION

If the motor stalls, do not maintain power to the winch.

Electric winches are designed and made for intermittent use and should not be used in constant duty applications.

⚠ CAUTION

Never release the free-spool clutch when there is a load on the winch.

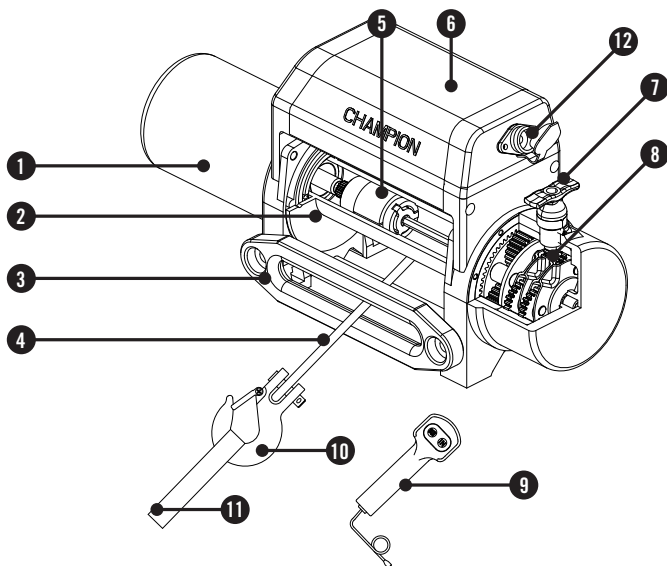
⚠ CAUTION

Use hook strap when handling the hook for spooling or unspooling the synthetic rope.

CONTROLS AND FEATURES

Read this owner's manual before operating your winch. Familiarize yourself with the location and function of the controls and features. Save this manual for future reference.

Winch



- | | |
|--|---|
| <p>(1) Motor – 3.6 HP 12V DC motor provides power to the planetary gear mechanism.</p> <p>(2) Winch Drum – The winch drum is the cylinder on which the synthetic rope is stored. It can feed or wind the rope depending on the remote winch switch.</p> <p>(3) Aluminum Hawse Fairlead – When using the winch at an angle the fairlead acts to guide the rope onto the drum and minimizes damage to the rope from abrasion on the winch mount or bumper.</p> <p>(4) Synthetic Rope – 5/16 in. x 80 ft. synthetic rope designed specifically for working load capacity of 8,000 lb. Includes an abrasion sleeve to protect the rope from rough surfaces.</p> <p>(5) Braking System – Braking action is automatically applied to the winch drum by a separate mechanical brake when the winch motor is stopped and there is a load on the synthetic rope.</p> | <p>(6) Solenoid – Power from the vehicle battery flows through the weather sealed solenoid switch before being directed to the winch motor.</p> <p>(7) Free spooling Clutch – The clutch allows the operator to manually disengage (“Out”) the spooling drum from the gear train, free spool. Engaging the clutch (“In”) locks the winch into the gear system.</p> <p>(8) Planetary Gear System – The reduction gears convert the winch motor power into extreme pulling forces. This system allows high torque while maintaining compact size and light weight.</p> <p>(9) Remote Switch – Dual switches for powering the rope in or out of your winch drum.</p> <p>(10) Clevis Hook – Provides a means for connecting the looped ends of cables to an anchor.</p> <p>(11) Strap – Used to assist cable feed.</p> <p>(12) Remote Switch Receptacle – Plug remote switch in here to control the winch.</p> |
|--|---|

This CPE 8,000 lb. winch is designed with a bolt pattern that is standard in this class of winch. Many winch mounting kits are available that utilize this bolt pattern for the most popular trucks and Sport Utility Vehicles. If you cannot find a kit locally, contact CPE and we will provide you with the name of a dealer near you.

⚠ CAUTION

Mounting bolts must be SAE grade 5 or better and torque to 34 ft. lbs.

⚠ WARNING

The winch must be mounted to a flat surface capable of supporting the rated load of the winch. Contact CPE at 1-877-338-0999 if the installation vehicle does not have a winch mounting plate.

Assembling and wiring the Winch

1. Insert 2 M12x25 bolts to the mounting channel hole and attach the aluminum hawse to the mounting channel (not included) with the 2 Flat Washers, Lock washers and Nut M12 provided.
2. Disengage the clutch by moving the clutch handle to the "Out" position. Release the synthetic rope and pull through the slot in the aluminum hawse.
3. Attach the clevis hook and hand strap.
4. Connect the battery leads. **FOR WINCH TO FUNCTION PROPERLY:** Connect the red (positive) lead to the positive (+) terminal of the vehicle's 12 volt battery. Connect the black (negative) lead to the negative (-) terminal of the vehicle's 12 volt battery.
5. Attach the remote lead to the winch and test for proper operation.

Assembling and wiring the Winch Cont'd.

6. Check for proper drum rotation. Turn the clutch handle to the "out" position (Free spooling). Pull out some cable from the drum, and then turn the clutch knob to the "In" position to engage the gears. Press the cable out button on the power switch. If the drum is turning and releasing more cable than your connections are accurate. If the drum is turning and collecting more cable then reverse the leads on the motor. Repeat and check rotation.

⚠ CAUTION

Battery cables should not be drawn taut. Leave some slack for cable movement.

⚠ CAUTION

NEVER route electrical cables across any sharp edges, through and/or near moving parts, or near parts that may become hot.

OPERATION

General Tips for Safe Operation

Your 18090 winch is rated at a 8,000 lb. capacity in first layer (max) when spooling the first rope layer on the drum. Overloads can damage the winch, motor and/or synthetic rope. For loads over 8,000 lbs. we recommend the use of the pulley block/snatch block to double the synthetic rope line.

This will aid in two ways:

- reduce the number or rope layers on the drum, as well as,
- reduce the load on the synthetic rope by as much as 50%.

When doubling the line back to the vehicle, attach to the tow hook, frame or other load bearing part. The vehicle engine should be kept running during operation of the winch to minimize battery drain and maximize power and speed of the winch. If the winch is used for a considerable time with the engine off the battery may be drained and too weak to restart the engine.

Get to know your winch before you actually need to use it. We recommend that you set up a few test runs to familiarize yourself with rigging techniques, the sounds your winch makes under various loads, the way the cable spools on the drum, etc.

Inspect the synthetic rope and equipment before each use. A frayed or damaged rope shall be replaced immediately. Use only manufacturer's identical replacement rope with the exact specifications.

Inspect the winch installation and bolts to ensure that all bolts are tight before each operation.

Store the remote control inside your vehicle in a place that it will not be damaged.

General Tips for Safe Operation Cont'd.

Any winch that appears to be damaged in any way, is found to be worn, or operates abnormally **MUST BE REMOVED FROM SERVICE UNTIL REPAIRED**. It is recommended that the necessary repairs be made by a manufacturer's authorized repair facility.

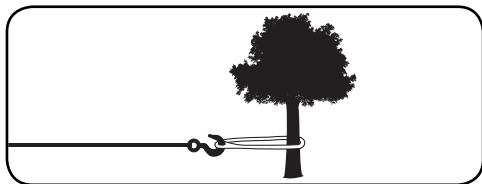
Pull only on areas of the vehicle as specified by the vehicle manufacturer. Only attachments and/or adapters supplied by the manufacturer are to be used.

NOTE

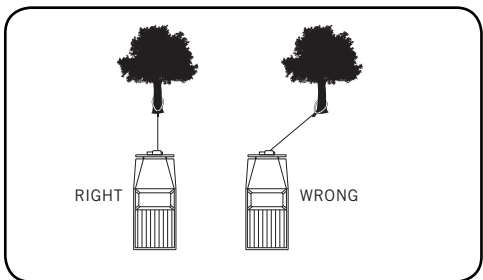
Inspect rope before and after each use. If rope becomes frayed it must be replaced.

Self Recovery

Locate a suitable anchor such as a strong tree trunk or boulder. Always use a sling as an anchor point.

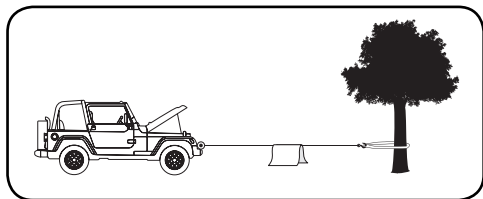


The aluminum hawse will help guide the synthetic rope and to reduce binding on short side pulls. Do not winch from an acute angle as the synthetic rope will pile up on one side of the drum causing damage to the synthetic rope and the winch.

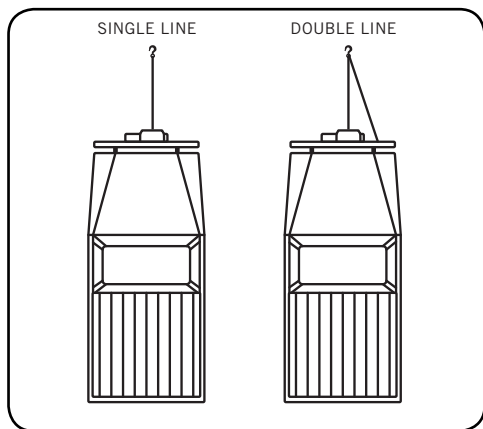


Self Recovery Cont'd.

Short pulls from an angle can be used to straighten the vehicle. Long pulls should be done with the synthetic rope at a 90° angle to the winch/vehicle. When pulling a heavy load, place a blanket or jacket over the synthetic rope five or six feet from the hook.



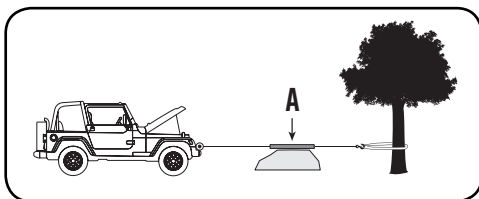
In the event of a broken rope it will dampen the snap back. For additional protection open the hood of the vehicle. For pulls over 8,000 lbs., we recommend the use of the snatch block/pulley block to double line the synthetic rope.



This reduces the load on the winch and the strain on the rope by approximately 50%.

Synthetic Rope Abrasion Sleeve

The winch should be set up to avoid any rough surface from contacting the rope. If that is not possible, the abrasion sleeve can be used to help protect the rope. (A)



OPERATION

Winching Techniques A-Z

- (a) Take time to assess your situation and plan your pull.
- (b) Put on gloves to protect your hands.
- (c) Disengage the clutch to allow free-spooling and also save battery power.
- (d) Attach the hook strap to the clevis hook.
- (e) Pull out the synthetic rope to your desired anchor point using the hook strap.
- (f) Secure the clevis hook to the anchor point: Sling, chain or snatch block. Do not attach the hook back onto the synthetic rope.
- (g) Engage the clutch.
- (h) Connect the remote control to the winch. If you are going to control the winch from inside your vehicle then pass the remote through an open window to avoid the wires being pinched in the door.
- (i) Start your engine to ensure power is being replenished to the battery.
- (j) Power in the synthetic rope guiding the wire under tension to draw up the slack in the wire. Once the wire is under tension, stand clear. Never step over the synthetic rope.
- (k) Double check your anchors and make sure all connections are secure.
- (l) Inspect the synthetic rope. Make sure there are at least 5 wraps of synthetic rope around the winch drum.
- (m) Drape a blanket or jacket over the synthetic rope approximately 5 to 6 feet from the hook. Open the hood for added protection.
- (n) Clear the area. Make sure all spectators stand clear and that no one is directly in front or behind the vehicle or anchor point.
- (o) Begin winching. Be sure that the synthetic rope is winding evenly and tightly around the drum. The vehicle that is being winched can be slowly driven to add assistance to the winching process. Avoid shock loads; keep the synthetic rope under tension.

Winching Techniques A-Z Cont'd.

- (p) The vehicle to be winched should be placed in neutral and the emergency brake released. Only release the brake pedal when under full tension. Avoid shock loads to the winch. This can damage the winch, rope and vehicle.
- (q) The winch is meant for intermittent use. Under full load with a single line rig do not power in for more than a minute without letting the motor cool down for a few minutes and then resume the winching operation.
- (r) The winching operation is complete once the vehicle is on stable ground and is able to drive under its own power.
- (s) Secure the vehicle. Be sure to set the brakes and place the vehicle in park.
- (t) Release the tension on the synthetic rope. The winch is not meant to hold the vehicle for long periods of time.
- (u) Disconnect the synthetic rope from the anchor.
- (v) Rewind the synthetic rope. Make sure that any wire already on the drum has spooled tightly and neatly. If not, draw out the wire and re-spool from the point where the rope is tight.
- (w) Keep your hands clear of the winch drum and fairlead as the synthetic rope is being drawn in.
- (x) Secure the hook and hook strap.
- (y) Disconnect the remote control and store in a clean, dry place.
- (z) Clean and inspect connections and mounting hardware for next winching operation.

The owner/operator is responsible for all periodic maintenance.

 **WARNING**

Never operate a damaged or defective winch.

 **WARNING**

Improper maintenance will void your warranty.

Complete all scheduled maintenance in a timely manner. Correct any issue before operating the winch.

 **NOTE**

For service or parts assistance, contact our help line at **1-877-338-0999**

Lubrication

All moving parts within the electric winch have been lubricated using high temperature lithium grease at the factory. No internal lubrication is required.

Cable Assembly Replacement

It is recommended that any modifications be performed by a manufacturer's authorized repair facility, and that only manufacturer-supplied parts be used.

1. Move the clutch to the "Out" position.
2. Extend Cable Assembly to its full length.
Note how the existing cable is connected to the inside of the drum.
3. Remove old Cable Assembly and attach new one.
4. Retract Cable Assembly onto drum being careful not to allow kinking.

Synthetic Rope

Periodically rinse the synthetic rope with water to remove any sand, dirt, mud, or debris that can become embedded or build up in the rope during use. This will help extend the life of the rope.

 **NOTE**

Inspect rope before and after each use. If rope becomes frayed it must be replaced.

SPECIFICATIONS

Performance Specifications

– Rated Pull	8,000 lb. (3629 kg)
– Gear Reduction Ratio	216:1
– Motor	Series Wound Motor 3.6 HP/2.7 kW (12V DC)
– Duty Cycle*	Intermittent Use Only (per SAE J706 std.), 26 ft. (7.9 m)*
– Drum Size	2.48 in. (D) x 8.84 in. (L) [63 mm (D) x 224.5 mm (L)]
– Cable	5/16 in. (D) x 80 ft. (L) [8 mm (D) x 24.4 m (L)]
– Gross Weight	65.7 lb. (29.8 kg)
– Net Weight	60.4 lb. (27.4 kg)
– Height	10.5 in. (26.7 cm)
– Width	5.6 in. (14.2 cm)
– Length	21.9 in. (55.5 cm)
– Bolt Pattern	10 in. x 4.5 in. (254 mm x 114.3 mm)

* The winch can pull at 50% load (4,000 lb.) for 26 ft. (7.9 m), then it should be allowed to cool. Wait till winch has cooled before resuming, as determined in SAE J706 std.

Line Speed and Motor Current (First Layer)						
Line Pull	LB	0	2000	4000	6000	8000
	KG	0	907	1814	2722	3629
Line Speed (12V DC)	FPM	16	9.8	6.9	5.6	4.6
	MPM	4.9	3.0	2.1	1.7	1.4
Max Current	A	115	200	270	320	380
Run Time*	Minutes	1	1	1	1	1
Cooling Time**	Minutes	5	5	5	5	5

* If the motor becomes uncomfortably hot to the touch, stop winching immediately and let it cool down for 5 minutes. Do not pull for more than one minute at or near the rated load.

** Electric winches are designed and made for intermittent use and should not be used in constant duty applications.

Line Pull and Cable Capacity Per Layer					
Line of Cable		1	2	3	4
Rated Line Pull	LB	8000	6500	5500	4700
	KG	3629	2951	2540	2134
Cable Capacity	FT	20.3	44.3	71.7	80.0
	M	6.2	13.5	21.9	24.4

– Use double line and snatch block for pulling loads over 8,000 lbs. (3629 kg).

Problem	Cause	Solution
Motor does not turn on	Switch Assembly not connected properly	Insert Switch Assembly all the way into the connector.
	Loose battery cable connections	Tighten nuts on all cable connections.
	Contactors malfunctioning	Tap contactor to loosen contacts. Apply 12 volts to coil terminals directly. A clicking indicates proper activation.
	Defective Switch Assembly	Replace Switch Assembly.
	Defective motor	Check for voltage at armature port with Switch pressed. If voltage is present, Replace motor.
	Water has entered motor	Allow to drain and dry. Run in short bursts without load until completely dry.
Motor runs but Cable drum does not turn	Clutch (Clutch handle) not engaged	Move Clutch handle to the "In" position. If problem persists, a qualified technician needs to check and repair.
Motor runs slowly or without normal power	Insufficient current or voltage	The battery is weak, recharge. Run winch with vehicle motor running (Battery should have a strong charge)
	Loose or corroded battery cable connections.	Clean, Tighten, or replace.
Motor overheating	winch running time too long	Allow winch to cool down periodically.
Motor runs in one direction only	Defective or stuck Contactor	Tap Contactor to loosen contacts.
		Repair or Replace contactor.
	Defective Switch Assembly	Replace Switch Assembly.

For further technical support:

Technical Service

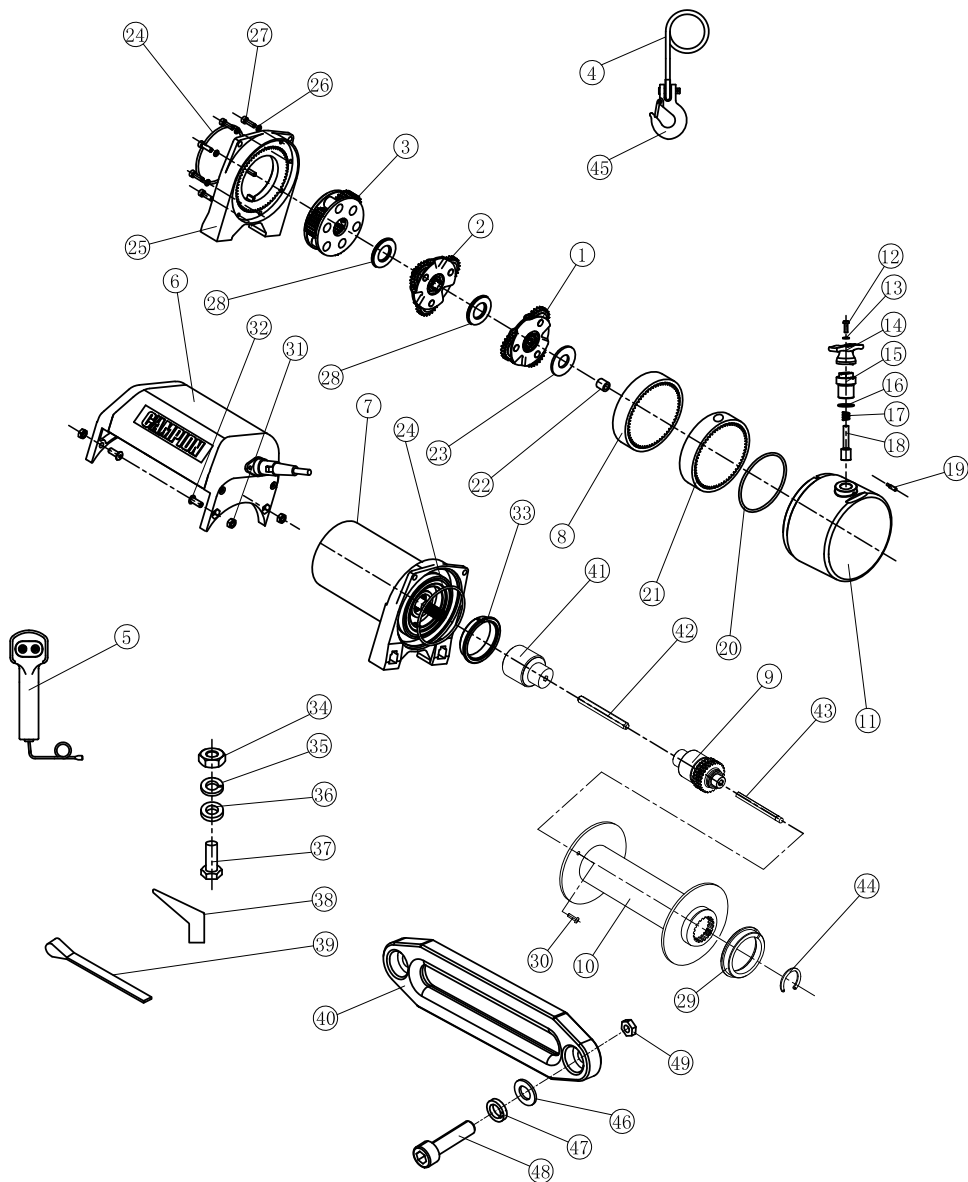
Mon – Fri 8:30 AM – 5:00 PM (PST/PDT)

Toll Free: 1-877-338-0999

tech@championpowerequipment.com

SPECIFICATIONS

Parts Diagram



#	Part number	Description	Qty
1	P1010100	Gear Carrier Assembly -Input	1
2	P1010200	Gear Carrier Assembly -Intermediate	1
3	P1010300-N	Gear Carrier Assembly-Output	1
4	811400-B	Synthetic Rope 5/16 in. x 80 ft. - Black	1
5	P1011001-B	Switch Assembly	1
6	811500-BF	Up-setting Solenoid Assembly - Black Flat	1
7	811300-BF	Motor/End Bearing Assembly - Black Flat	1
8	P1011021	Gear Housing A	1
9	P1010600-NA	Brake Assembly	1
10	P1010900-N-BA	Drum Assembly	1
11	P1011005-N-BF	Gear Housing End Cover - Black Flat	1
12	P1011022	Pan Head Screw M5x15	1
13	P1011023	Washer ø5	1
14	P1011024	Clutch Handle	1
15	P1011025	Clutch Seat	1
16	P1011026	Seal Ring ø20x1.8	1
17	P1011027	Spring	1
18	P1011028	Clutch Pin	1
19	P1011029	Set Screws M4x8	1
20	P1011010	Gear Housing End Cover Seal	1
21	P1011030	Gear Housing B	1

#	Part number	Description	Qty
22	P1011012	Bushing	1
23	P1011013	Thrust Washer	1
24	P1011014	Motor/End Bearing Seal	2
25	P1011032-BF	End Bearing - Black Flat	1
26	P1011016	Lock Washer ø6	8
27	P1011017	Cap Screw M6x20	8
28	P1011018	Thrust Disc	2
29	P1010008	Bushing - Drum	1
30	P1010012	Cap Screw M6x10	1
31	P1010013	Lock Nut M8	4
32	P1010014	Cap Screw M8x22	4
33	P1010015	Motor/Drum Bushing	1
34	810024	Lock Nut M10	4
35	810023	Flat Washer ø10	4
36	810022	Lock Washer ø10	4
37	810021	Cap Scerw M10x35	4
38	810025-N	Terminal Protector	3
39	410022	Strap	1
40	811600	Aluminum Hawse - 254 mm	1
41	810033	Motor Coupling	1
42	P1011033	Hexagonal Shaft I	1
43	P1011034	Hexagonal Shaft II	1
44	810035	Retainer-Ring 50	1
45	C10516	5/16 in. Clevis Hook	1
46	810036	Flat Washer ø12	2
47	810037	Lock Washer ø12	2
48	810038	Bolt M12x25	2
49	810039	Lock Nut M12	2

WARRANTY

WARRANTY

CHAMPION POWER EQUIPMENT
2 YEAR LIMITED WARRANTY

Effective September 1, 2006. Replaces all undated warranties and all warranties dated before September 1, 2006.

Warranty Qualifications

Champion Power Equipment (CPE) will register this warranty upon receipt of your Warranty Registration Card and a copy of your sales receipt from one of CPE's retail locations as proof of purchase.

Please submit your warranty registration and your proof of purchase within ten (10) days of the date of purchase.

Repair/Replacement Warranty

CPE warrants to the original purchaser that the mechanical and electrical components will be free of defects in material and workmanship for a period of one year (parts and labor) and two years (parts) from the original date of purchase (90 days (parts and labor) and 180 days (parts) for commercial & industrial use). Transportation charges on product submitted for repair or replacement under this warranty are the sole responsibility of the purchaser. This warranty only applies to the original purchaser and is not transferable.

Do Not Return The Unit To The Place Of Purchase

Contact CPE's Technical Service and CPE will troubleshoot any issue via phone or e-mail. If the problem is not corrected by this method, CPE will, at its option, authorize evaluation, repair or replacement of the defective part or component at a CPE Service Center. CPE will provide you with a case number for warranty service. Please keep it for future reference. Repairs or replacements without prior authorization, or at an unauthorized repair facility, will not be covered by this warranty.

Warranty Exclusions

This warranty does not cover the following repairs and equipment:

Normal Wear

Winches need periodic parts and service to perform well. This warranty does not cover repair when normal use has exhausted the life of a part or the equipment as a whole.

Installation, Use and Maintenance

This warranty will not apply to parts and/or labor if this winch is deemed to have been misused, neglected, involved in an accident, abused, loaded beyond the winch's limits, modified, installed improperly or connected incorrectly to any electrical component. Normal maintenance is not covered by this warranty.

Other Exclusions

This warranty excludes: The winch cable. Cosmetic defects such as paint, decals, etc. Accessory parts such as storage covers. Failures due to acts of God and other force majeure events beyond the manufacturer's control. Problems cause by parts that are not original Champion Power Equipment parts.

Limits of Implied Warranty and Consequential Damage

Champion Power Equipment disclaims any obligation to cover any loss of time, use of this product, freight, or any incidental or consequential claim by anyone from using this winch. THIS WARRANTY IS IN LIEU OF ALL OTHER WARRANTIES, EXPRESS OR IMPLIED, INCLUDING WARRANTIES OF MERCHANTABILITY OR FITNESS FOR A PARTICULAR PURPOSE

A unit provided as an exchange will be subject to the warranty of the original unit. The length of the warranty governing the exchanged unit will remain calculated by reference to the purchase date of the original unit. This warranty gives you certain legal rights which may change from state to state. Your state may also have other rights you may be entitled to that are not listed within this warranty.

Contact Information

Address

Champion Power Equipment, Inc.
Customer Service
10006 Santa Fe Springs Rd.
Santa Fe Springs, CA 90670
www.championpowerequipment.com

Customer Service

Mon – Fri 8:30 AM – 5:00 PM (PST/PDT)
Toll Free: 1-877-338-0999
info@championpowerequipment.com
Fax no.: 1-562-236-9429

Technical Service

Mon – Fri 8:30 AM – 5:00 PM (PST/PDT)
Toll Free: 1-877-338-0999
tech@championpowerequipment.com
24/7 Tech Support: 1-562-204-1188