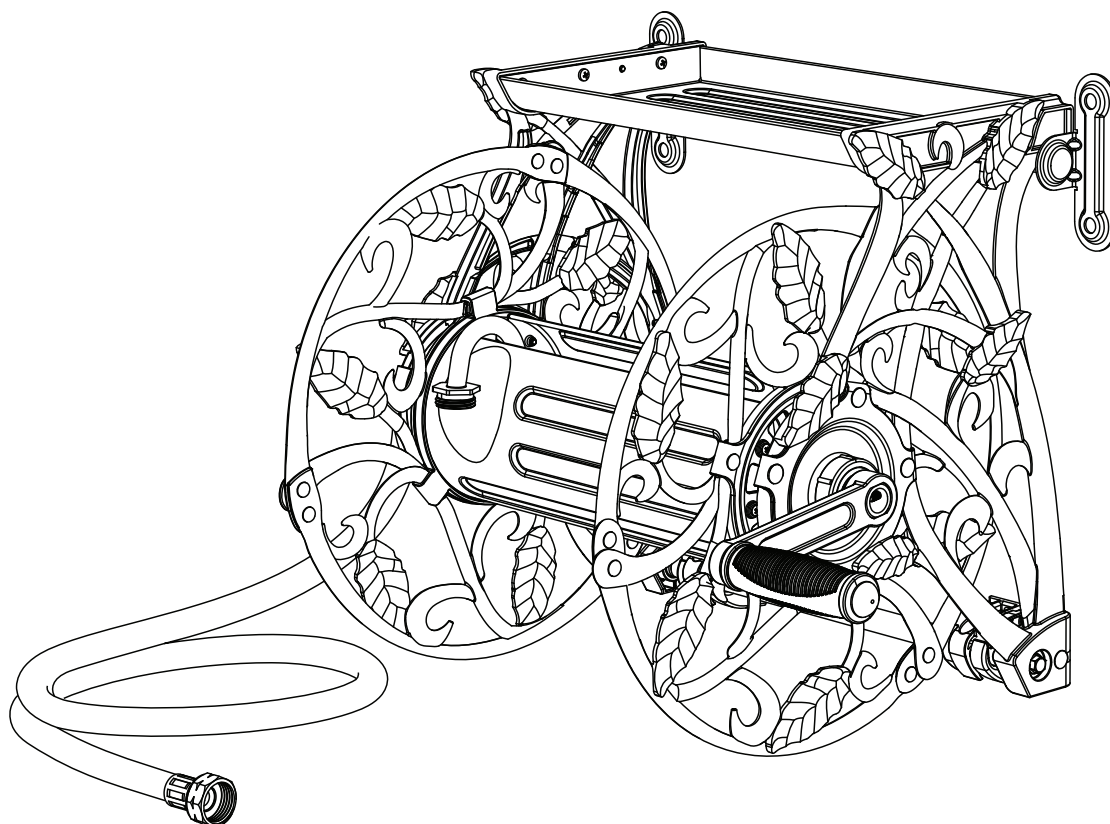




OWNER'S MANUAL



DETACHABLE HOSE REEL



MODEL NUMBER
100361

SAVE THESE INSTRUCTIONS
Important safety instructions
are included in this manual.

MADE IN CHINA
REV 100361-20200525

12039 Smith Ave.
Santa Fe Springs, CA 90670 USA
1-877-338-0999
www.championpowerequipment.com

Have questions or need assistance?

Do not return this product to the store!

WE ARE HERE TO HELP!

Visit our website:

www.championpowerequipment.com

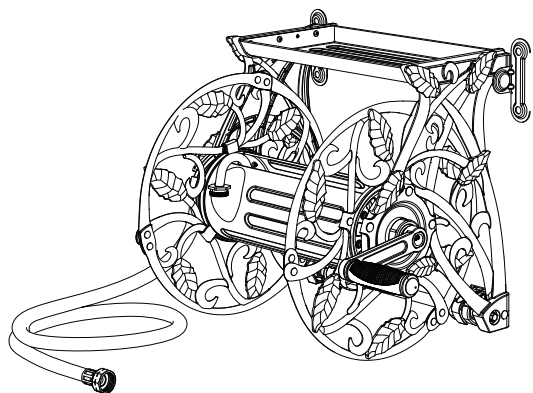
for more info:

- Product Info and Updates
- Tech Bulletins
- Frequently Asked Questions
- Product Registration

– or –

Call our Customer Care Team Toll-Free at:

1-877-338-0999



DETACHABLE HOSE REEL

TABLE OF CONTENTS

Introduction	4
Before You Begin	4
Manual Conventions	5
Safety rules	5
Parts	6
Parts Included	6
Hardware Included	6
Recommended Tools (not included)	7
Replacement Parts	7
Assembly	8
Install Mounting Rail to Masonry Wall	8
Install Mounting Rail to a Stud Wall	9
Install Mounting Clips	9
Crank Assembly	10
Attach the Leader Hose	10
Moving or Storing the Hose Reel	10
Specifications	12
Parts Diagram	12
Parts List	13

INTRODUCTION

Before You Begin

This product has been packaged to ensure it arrives in best possible condition. Please be careful when unpacking. Read instructions prior to assembly. This kit contains parts that can be damaged if incorrectly assembled. Please follow instructions. Champion Power Equipment is not responsible for replacing parts damaged due to incorrect assembly.

Record the model and serial numbers as well as date and place of purchase for future reference. Have this information available when ordering parts and when making technical or warranty inquiries.

Champion Power Equipment Support
1-877-338-0999
Model Number
100361
Serial Number
Date of Purchase
Purchase Location

This manual uses the following symbols to help differentiate between different kinds of information. The safety symbol is used with a key word to alert you to potential hazards in operating and owning power equipment.

Follow all safety messages to avoid or reduce the risk of serious injury or death.

WARNING

WARNING indicates a hazardous situation which, if not avoided, *could* result in death or serious injury.

NOTICE

NOTICE is used to address practices not related to physical injury.

CAUTION

CAUTION indicates a hazardous situation which, if not avoided, *could* result in minor or moderate injury.

SAFETY RULES

CAUTION

Read the entire guide before installation or use.

WARNING

Connect only to water below 100 psi.

CAUTION

Release pressure when not in use.

WARNING

The coupling contains lead, a chemical known to the state of California to cause cancer and birth defects or other reproductive harm.

WASH HANDS after handling.

This hose is not for drinking water use.

CAUTION

Please consider carefully the appropriate method to be used in mounting this hose reel. Hardware is included for your convenience, but may not be suitable for all mounting conditions. Some surfaces like vinyl siding or stucco may require special considerations or additional hardware. Improper mounting can cause personal injury or property damage. If you are unsure, contact a home improvement professional.

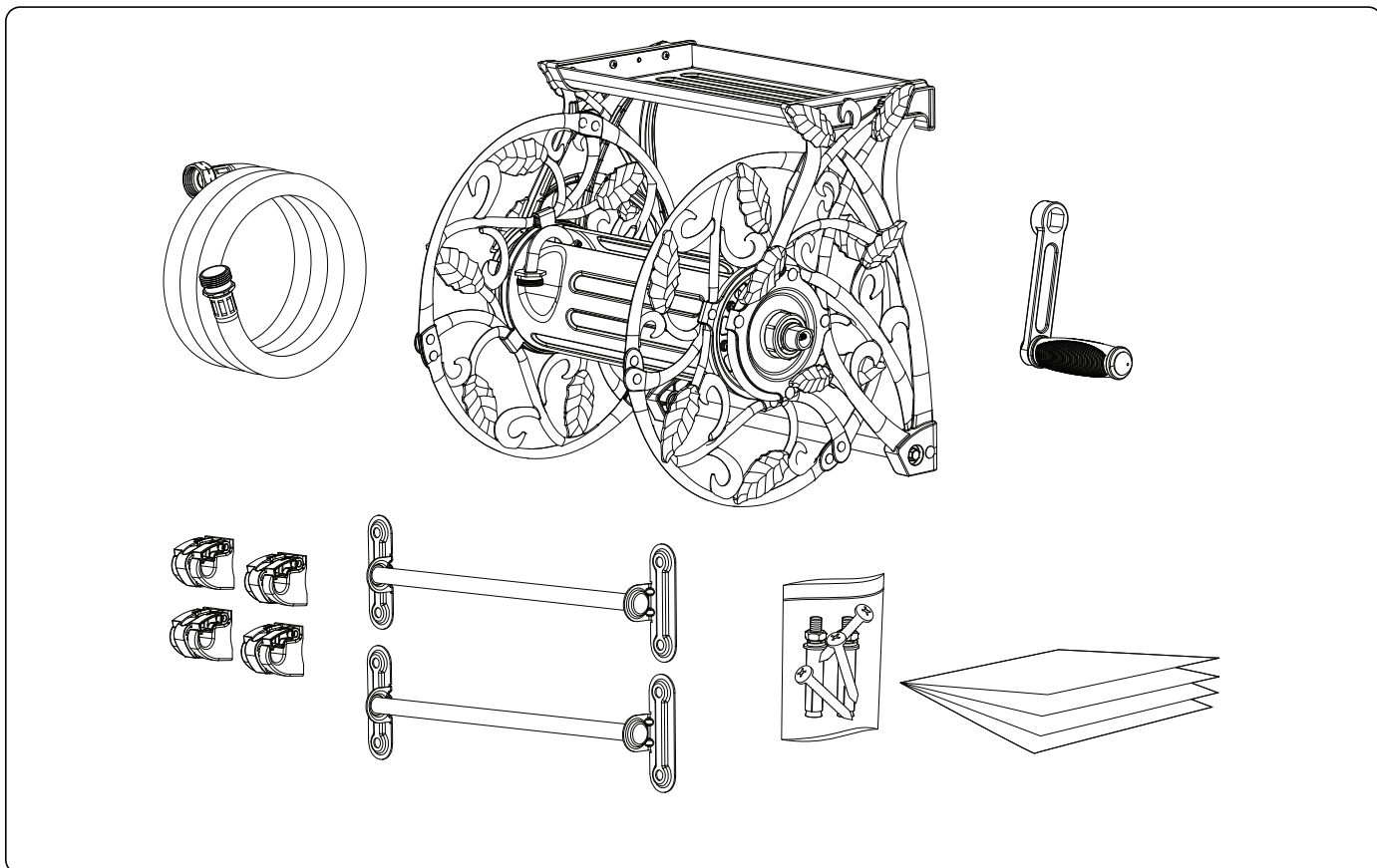
WARNING

Water hose reel is not intended for use as a potable water source.

NOTICE

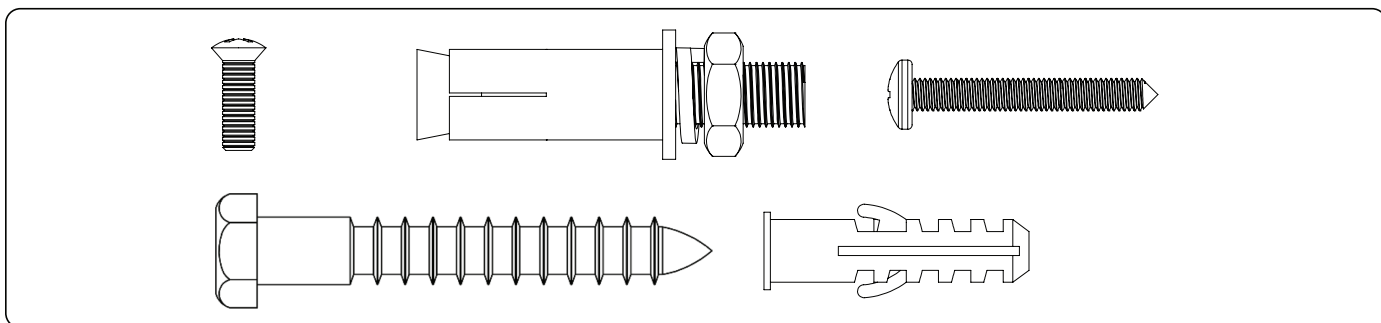
If you have questions regarding your hose reel, we can help. Please call our help line at **1-877-338-0999**

PARTS



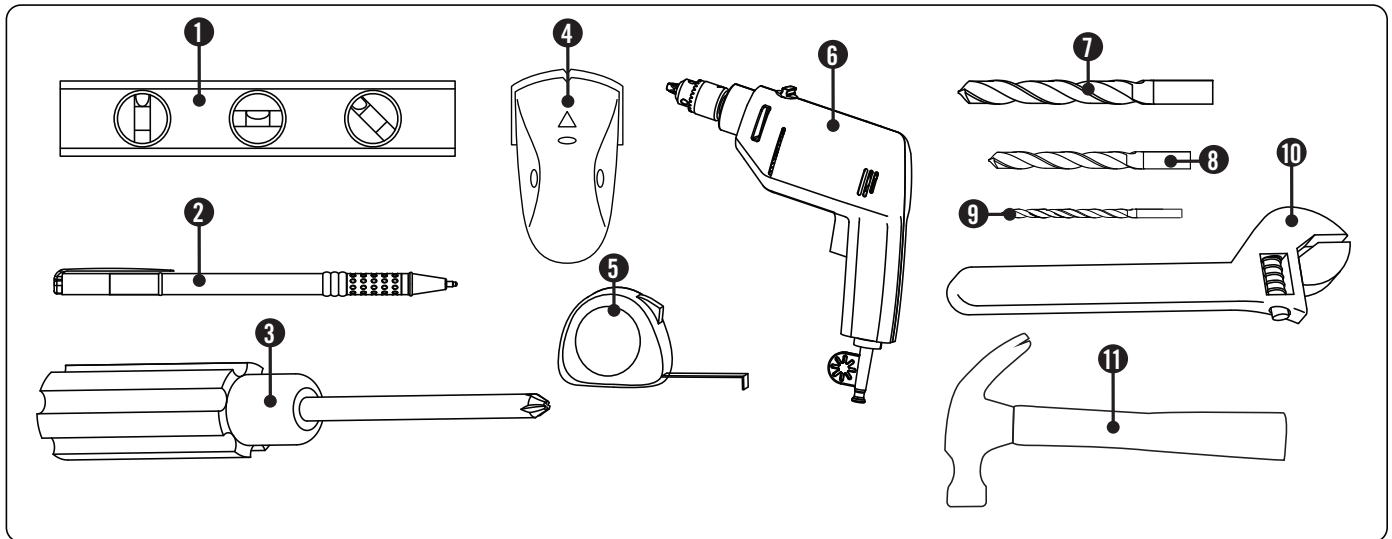
Parts Included

- | | | | |
|---|---|----------------------------|---|
| - 2 m (6.5 ft.) leader hose | 1 | - Mounting rails | 2 |
| - Decorative aluminum hose reel | 1 | - Hardware pack | 1 |
| - Crank handle | 1 | - Owner's manual | 1 |
| - Mounting clips | 4 | | |



Hardware Included

- | | | | |
|-----------------------------|---|----------------------------------|---|
| - Crank screw | 1 | - Phillips wood screws | 8 |
| - Masonry anchors | 8 | - Plastic anchors | 8 |
| - Lag screws | 8 | | |



Recommended Tools (not included)

- | | |
|-------------------------------|--|
| (1) Bubble level | (6) Drill |
| (2) Pen or pencil | (7) Ø13 mm (1/2 in.) masonry drill bit |
| (3) Phillips-head screwdriver | (8) Ø6 mm (1/4 in.) drill bit |
| (4) Stud finder | (9) Ø10 mm (3/8 in.) drill bit |
| (5) Tape measure | (10) Adjustable wrench |
| | (11) Hammer |

Replacement Parts

For replacement parts, contact:

Address

Champion Power Equipment, Inc.
Customer Service
12039 Smith Ave.
Santa Fe Springs, CA 90670 USA
www.championpowerequipment.com

Customer Service

Mon – Fri 8:30 AM – 5:00 PM (PST/PDT)
Toll Free: 1-877-338-0999
info@championpowerequipment.com
Fax no.: 1-562-236-9429

Technical Service

Mon – Fri 8:30 AM – 5:00 PM (PST/PDT)
Toll Free: 1-877-338-0999
tech@championpowerequipment.com
24/7 Tech Support: 1-562-204-1188

ASSEMBLY

NOTICE

Carefully remove all parts from the packing box. Locate all hardware and components before installation.

NOTICE

Do not completely tighten bolts until assembly is completed. For easier assembly, we recommend that two people assemble this product.

⚠ WARNING

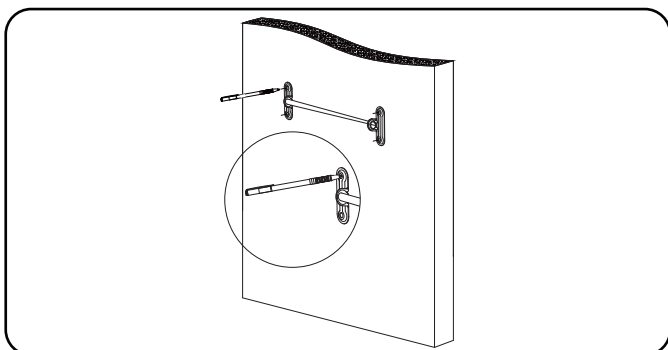
Ensure there are no live electric wires or plumbing in the wall where you mount the hose reel.

⚠ WARNING

Always use eye-protection when using power tools.

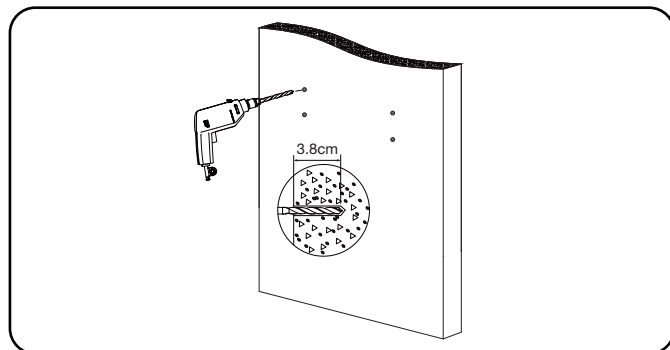
Install Mounting Rail to Masonry Wall

1. Position the mounting rail on the wall at a convenient height.
2. Use a bubble level to ensure the mounting rail is horizontal.
3. Mark hole centre locations on the wall.

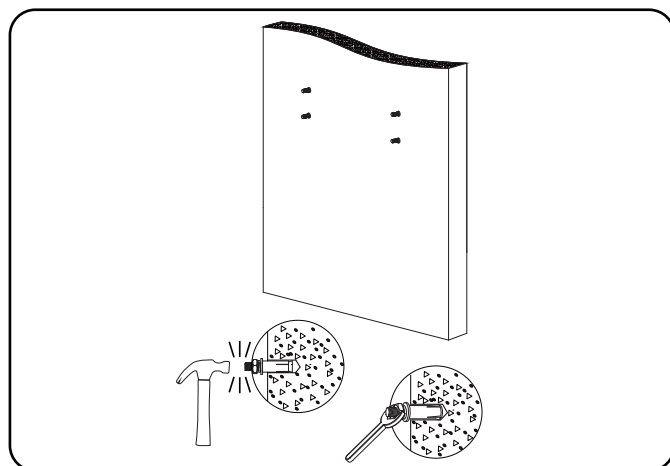


Install Mounting Rail to Masonry Wall Cont'd

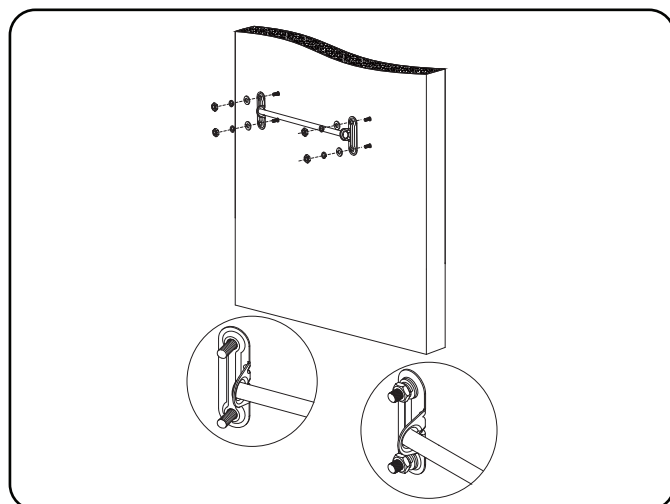
4. Using a 13mm (½ in.) masonry drill bit, drill approximately 3.8cm (1.5 in.) deep centered on the marks you made in step 3.



5. Using a hammer, lightly tap the masonry anchors into the holes, being careful not to damage them, until fully seated. Remove the nuts and washers.

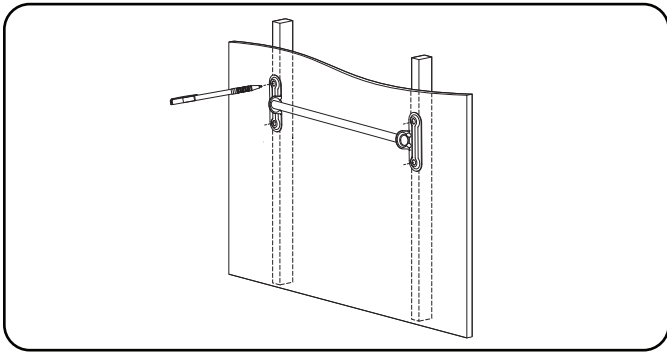


6. Hang the mounting rail onto the exposed anchors.
7. Replace the nuts and washers, tightening them with a wrench.

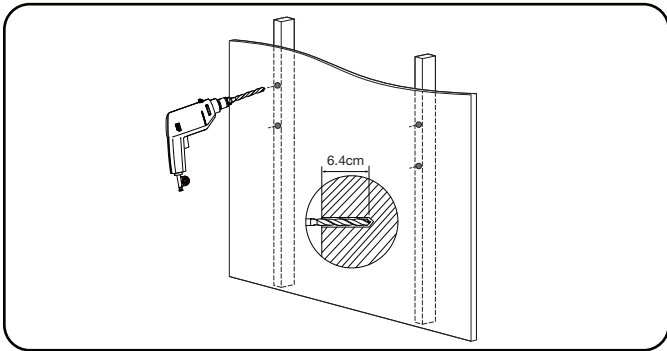


Install Mounting Rail to a Stud Wall

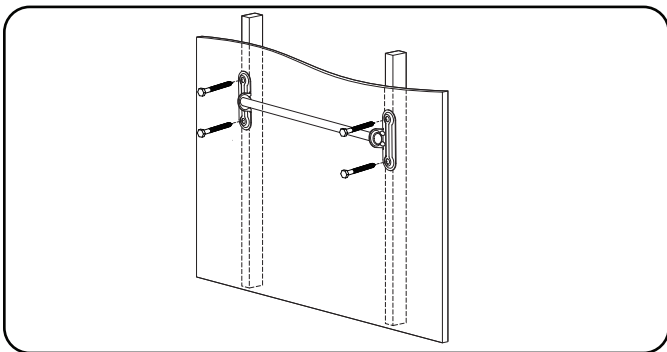
1. Locate the studs using a stud finder.
2. Position the mounting rail on the wall at a convenient height.
3. Use a bubble level to ensure the mounting rail is horizontal.
4. Mark hole centre locations on the wall.



5. Using a 6mm (1/4 in.) drill bit, drill pilot holes approximately 6.4cm (2.5 in.) deep centered on the marks you made in step 4.

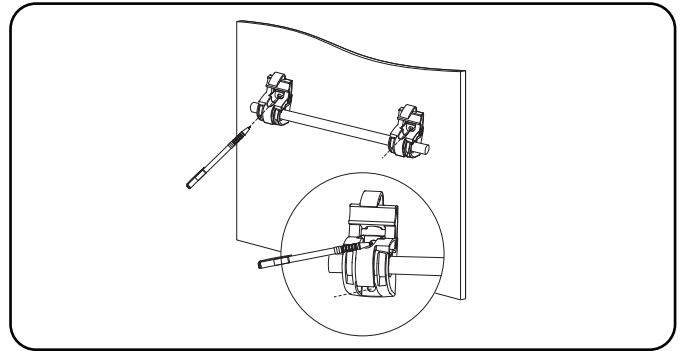


6. Hang the mounting rail with the lag screws.

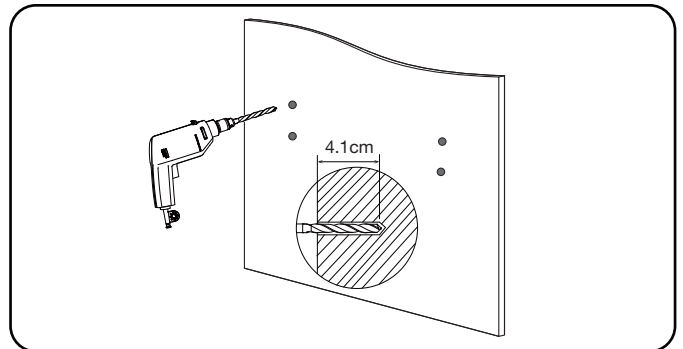


Install Mounting Clips

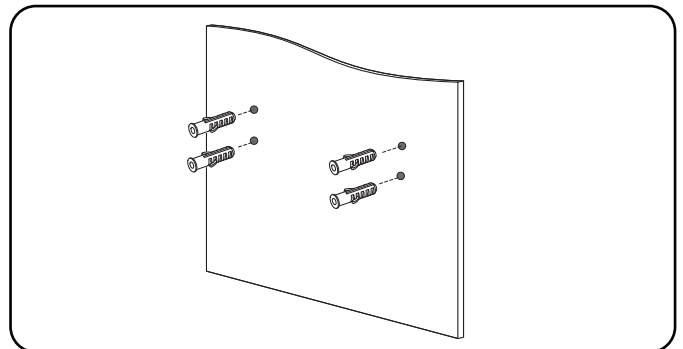
1. Hang the hose reel on the mounting rail.
2. Attach 2 mounting clips to the bottom rail, one at the far left and one at the far right.
3. Mark the hole centre locations on the wall.



4. Remove hose reel.
5. Using a 10mm (3/8 in.) drill bit, drill pilot holes approximately 4.1cm (1 5/8 in.) deep centered on the marks you made in step 3.



6. Push plastic anchors into the holes.

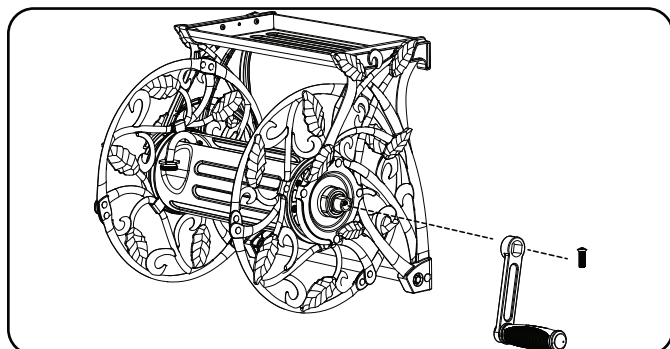


7. Rehang hose reel.
8. Drive screws into plastic anchors tightly with a screwdriver.

ASSEMBLY

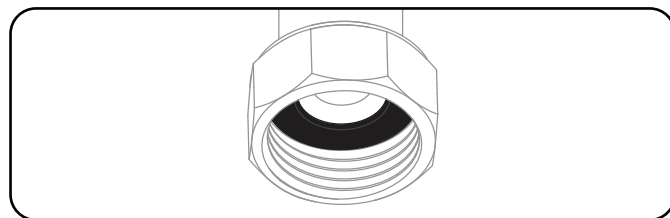
Crank Assembly

1. Assemble the crank on to the hose reel as shown.
2. Secure with the crank screw.



Attach the Leader Hose

1. Inspect threaded female connector on hose reel, confirm that rubber O-ring is properly seated.



2. Connect threaded male connector end of leader hose to threaded female fitting on hose reel spool.
3. Tighten by hand until snug (clockwise).
4. With adjustable pliers or wrench tighten fully.

Moving or Storing the Hose Reel

NOTICE

Freezing temperatures can damage your hose and watering accessories. Always disconnect the connector hose and drain the water from the hose prior to freezing conditions.

NOTICE

Prior to removing the hose reel for winter or moving the hose reel to a new location, always disconnect the connector hose and drain the water from the hoses before storing or moving.

To remove hose reel from wall cradle:

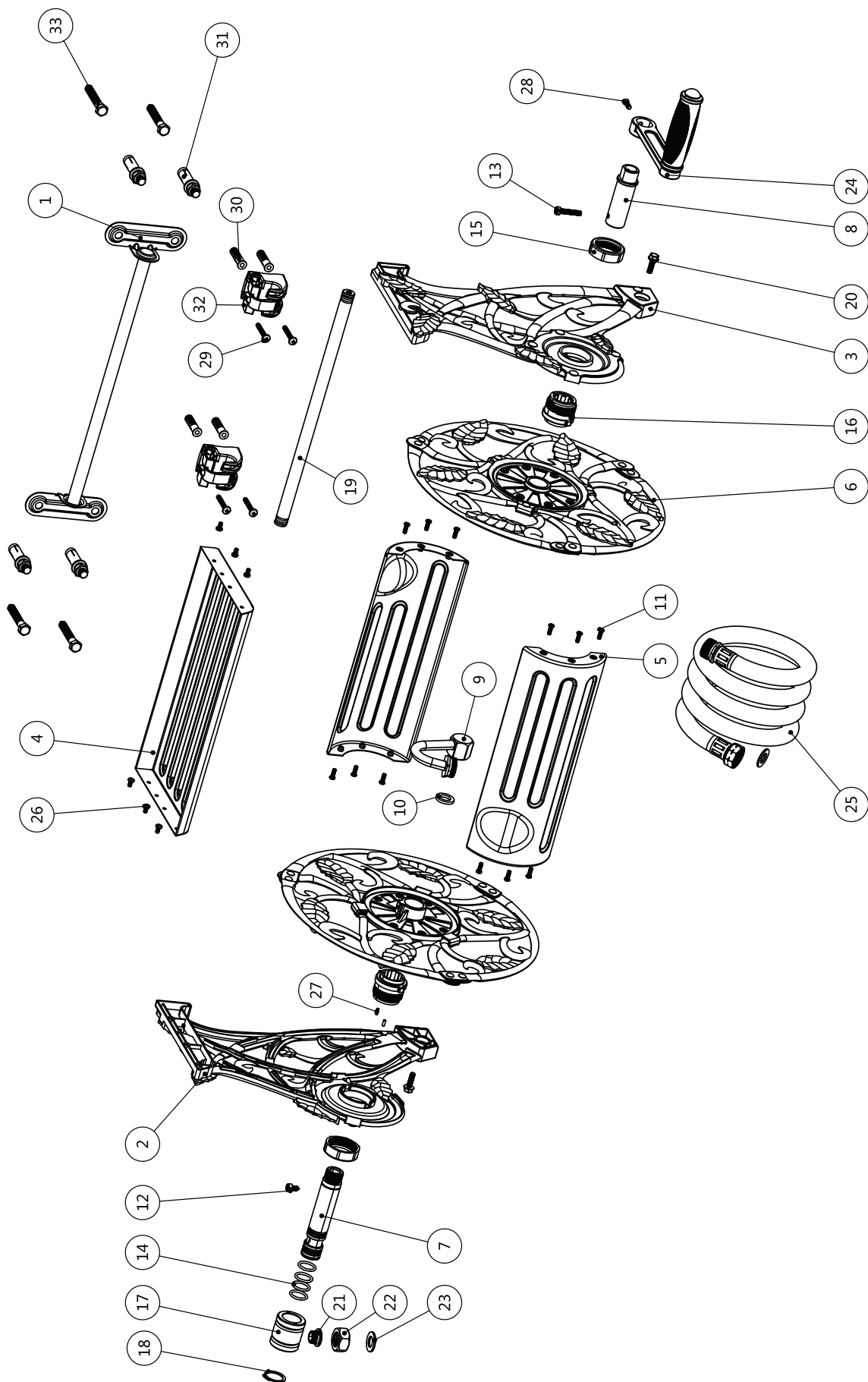
1. Turn off water at house water spicket.
2. Unscrew leader hose from water spicket (leader hose connects the hose reel to the house spicket).
3. Unwind hose from hose reel.
4. Unscrew garden hose from hose reel.
5. Unlatch two lower clips.
6. Lift hose reel upward and out to remove from cradle system.

For re-installation, follow instructions in reverse.

This page is intentionally left blank.

SPECIFICATIONS

Parts Diagram



Parts List

#	Part Number	Description	Qty
1	09001019	Mounting Rail Subassy	2
2	09002120	Left Frame	1
3	09002121	Right Frame	1
4	09002122	Accessory Shelf	1
5	09001023	Hub Half Subassy	2
6	09002123	Right/Left Plate	2
7	09002127	Long Axle	1
8	09002128	Short Axle	1
9	90072635	Outlet Fitting	1
10	09003004	Outlet Seal, Water System	1
11	90022204	Screw, M4 × 12, Pan, Cross	12
12	90022605	Set Screw, M6 × 12	1
13	90022301	Screw, M6 × 30, Allen	1
14	90052026	O-Ring, 19 × 2.65	4
15	09003001	Swivel Cover	2
16	09003002	Right Plastic Bearing	2
17	09002104	Sleeve	1
18	90032300	Retainer Clip, 25 mm	1
19	09001005	Support Tube Subassy	1

#	Part Number	Description	Qty
20	90022601	Screw, M6 × 20, Hex Flange	2
21	90072637	Inlet Brass Screw	1
22	90072636	Inlet Brass Nut	1
23	09003003	Seal Washer	3
24	09001021	Crank Handle Subassy	1
25	09001013	Leader Hose Subassy	1
26	90022202	Screw, M4 × 8, Pan, Cross	6
27	90102504	Locating Pin	2
28	90022504	Screw, M5 × 15, Oval Recess, Cross	1
29	90022031	Screw, Wood, St 4.8 × 38	8
30	95024074	Plastic Anchor	8
31	95024046	Masonry Anchor, 10 × 60	8
32	09001022	Mounting Clip Subassy	4
33	95024050	Screw, Lag, St 9.5 × 64, Hex	8

WARRANTY*

CHAMPION POWER EQUIPMENT
2 YEAR LIMITED WARRANTY

Warranty Qualifications

To register your product for warranty and FREE lifetime call center technical support please visit:

<https://www.championpowerequipment.com/register>

To complete registration you will need to include a copy of the purchase receipt as proof of original purchase. Proof of purchase is required for warranty service. Please register within ten (10) days from date of purchase.

Repair/Replacement Warranty

CPE warrants to the original purchaser that the mechanical and electrical components will be free of defects in material and workmanship for a period of two years (parts and labor) from the original date of purchase and 180 days (parts and labor) for commercial and industrial use. Transportation charges on product submitted for repair or replacement under this warranty are the sole responsibility of the purchaser. This warranty only applies to the original purchaser and is not transferable.

Do Not Return The Unit To The Place Of Purchase

Contact CPE's Technical Service and CPE will troubleshoot any issue via phone or e-mail. If the problem is not corrected by this method, CPE will, at its option, authorize evaluation, repair or replacement of the defective part or component at a CPE Service Center. CPE will provide you with a case number for warranty service. Please keep it for future reference. Repairs or replacements without prior authorization, or at an unauthorized repair facility, will not be covered by this warranty.

Warranty Exclusions

This warranty does not cover the following repairs and equipment:

Normal Wear

Products with mechanical and electrical components need periodic parts and service to perform well. This warranty does not cover repair when normal use has exhausted the life of a part or the equipment as a whole.

Installation, Use and Maintenance

This warranty will not apply to parts and/or labor if the product is deemed to have been misused, neglected, involved in an accident, abused, loaded beyond the product's limits, modified, installed improperly or connected incorrectly to any electrical component. Normal maintenance is not covered by this warranty and is not required to be performed at a facility or by a person authorized by CPE.

Other Exclusions

This warranty excludes:

- Cosmetic defects such as paint, decals, etc.
- Wear items such as filter elements, o-rings, etc.
- Accessory parts such as storage covers.
- Failures due to acts of God and other force majeure events beyond the manufacturer's control.
- Problems caused by parts that are not original Champion Power Equipment parts.

Limits of Implied Warranty and Consequential Damage

Champion Power Equipment disclaims any obligation to cover any loss of time, use of this product, freight, or any incidental or consequential claim by anyone from using this product. THIS WARRANTY IS IN LIEU OF ALL OTHER WARRANTIES, EXPRESS OR IMPLIED, INCLUDING WARRANTIES OF MERCHANTABILITY OR FITNESS FOR A PARTICULAR PURPOSE.

A unit provided as an exchange will be subject to the warranty of the original unit. The length of the warranty governing the exchanged unit will remain calculated by reference to the purchase date of the original unit.

This warranty gives you certain legal rights which may change from state to state or province to province. Your state or province may also have other rights you may be entitled to that are not listed within this warranty.

Contact Information

Address

Champion Power Equipment, Inc.
12039 Smith Ave.
Santa Fe Springs, CA 90670 USA
www.championpowerequipment.com

Customer Service

Toll Free: 1-877-338-0999
info@championpowerequipment.com
Fax no.: 1-562-236-9429

Technical Service

Toll Free: 1-877-338-0999
tech@championpowerequipment.com
24/7 Tech Support: 1-562-204-1188