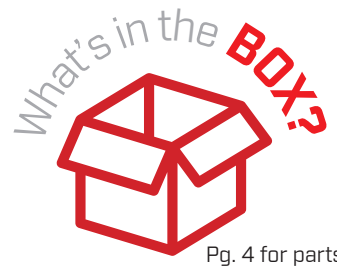
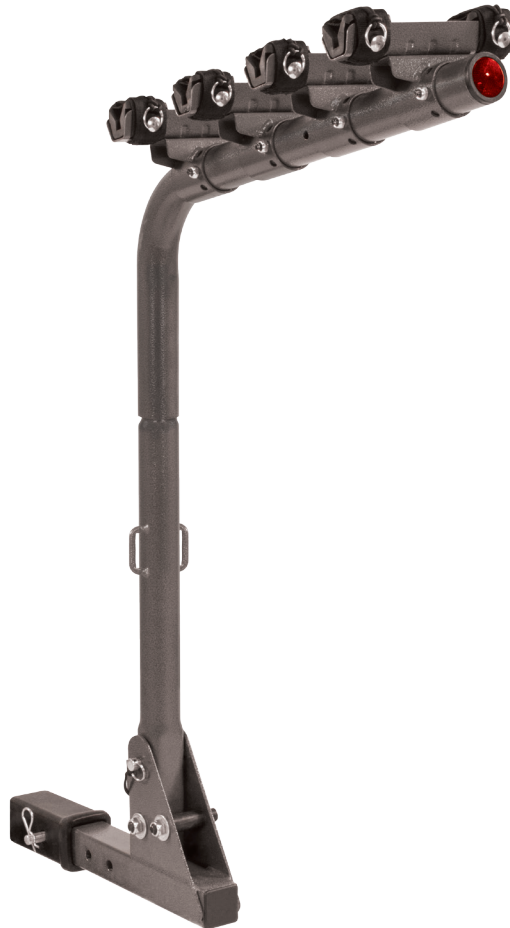




OWNER'S MANUAL



Pg. 4 for parts

# 4-BIKE CARRIER



MODEL NUMBER  
**100318**

**SAVE THESE INSTRUCTIONS!**  
Important Safety Instructions  
are included in this manual.

**Call Customer Service if You Have Any Questions**  
**1-877-338-0999**

12039 Smith Ave.  
Santa Fe Springs, CA. 90670  
[www.ChampionPowerEquipment.com](http://www.ChampionPowerEquipment.com)

# INTRODUCTION

Congratulations on purchasing your new CPE Adjustable Bike Carrier from Champion Power Equipment. This Carrier is specifically designed for use on the back of your vehicle and not on Trailers or Motorhomes.

With proper use & maintenance, this Bike Carrier will bring years of satisfying service!  
Should you ever have any questions or issues with your Bike Carrier, please call us for assistance.



**Have Questions or Need Assistance?**

**\*\*\*Do not return this product to the retailer where purchased.\*\*\***

**Please Call Our Customer Service Dept.**

**1-877-338-0999**



**Do Not Use on back of Trailers,  
Motorhomes, or on Off-road Terrain.**

**For residents of California:**

WARNING: This product contains chemicals known to the State of California to cause cancer or birth defects and other reproductive harm.

# SAFETY!



## WARNING:

Read Manual thoroughly before installing & using your Bike Carrier. Failure to follow instructions could result in serious injury to person or property.



## WARNING:

This Bike Carrier is designed to attach securely to most automobile receiver hitches. Due to variations in automobile design & utility, we cannot guarantee this product will fit all vehicles. It is your responsibility to ensure safe & proper use of this product.

The Carrier is designed for use on Passenger Cars, Trucks and SUV's with appropriate receiver capacity. Improper use & attachment of Carrier to your Vehicle may be hazardous to your Bicycles, Vehicles or other Vehicles driving behind you.



## WARNING:

The Bicycle Carrier **SHOULD NOT** be used for TOWING or any pulling purpose. Not for use behind a 5th Wheel or Travel Trailer.



## CAUTION:

ALWAYS secure your Bicycles to the Carrier using the frame Cradles & Straps. Additional Rope, Bungee Cords, or Cable Locks may be used for additional security & stability.

If a Strap appears worn or frayed, replace it immediately.

Check Straps and Cradles regularly during use. It's a good practice to stop your vehicle after 500 feet and check security of mounted bicycles.

This Bike Carrier was not constructed to protect Bicycles from severe abuse in off-highway driving conditions. Bumpy roads may cause mounted Bicycles to move & shift in transit, resulting in property damage.

**DO NOT** let Bicycle Tires hang near exhaust pipes of your vehicle. Hot exhaust may cause damage to Tires.



## WARNING:

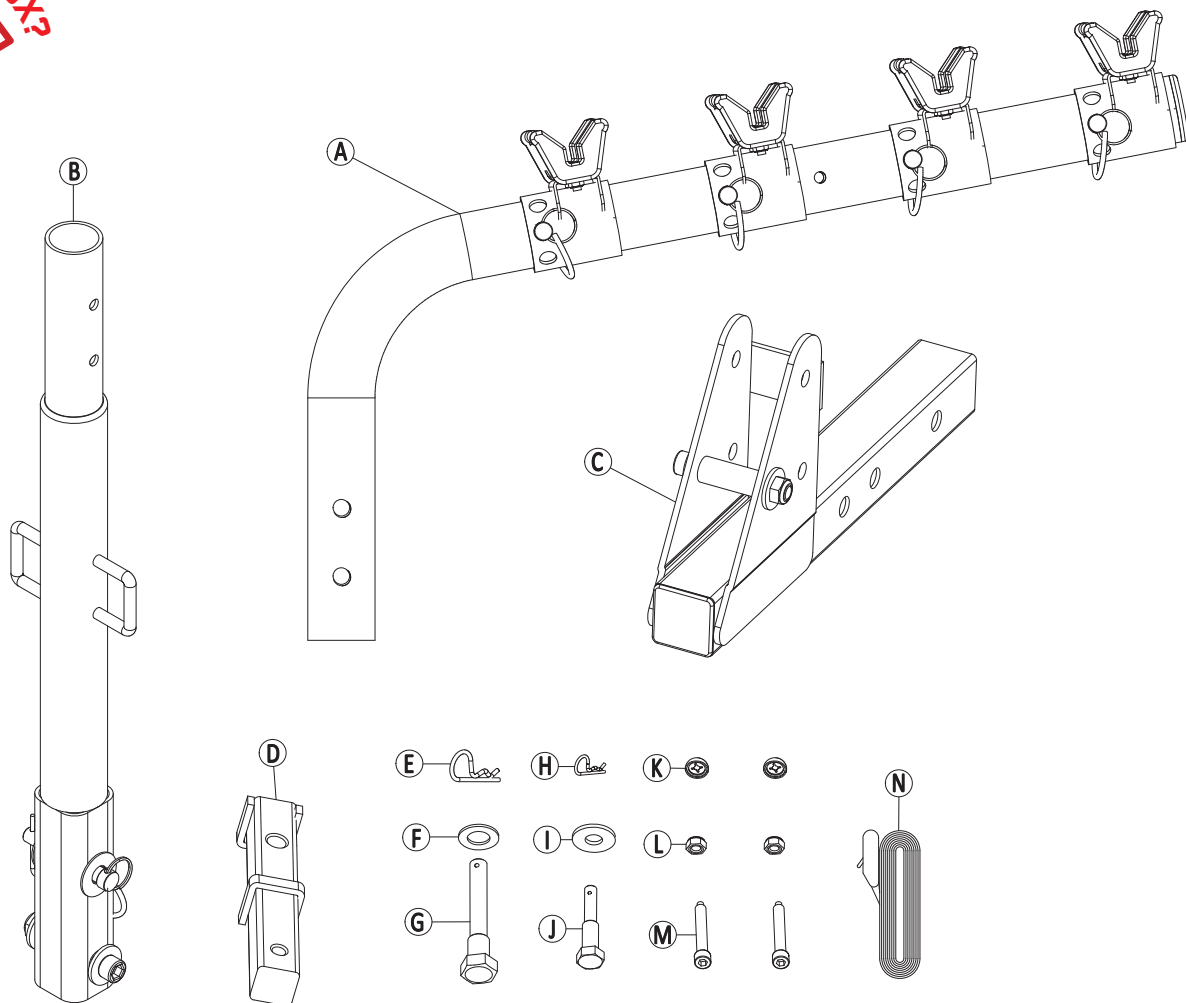
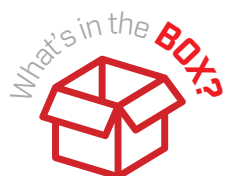
**DO NOT** exceed rated capacity of this Bike Carrier. Load no more than 4-Bicycles, weighing less than 200-lbs total.

**DO NOT** use this Bike Carrier for transporting or carrying other items or materials besides Bicycles.

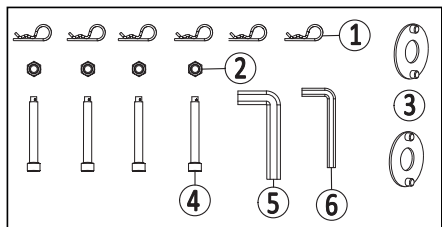
Call Customer Service if You Have Any Questions

**1-877-338-0999**

# WHAT'S IN THE BOX?



## Extra Parts



## Extra Parts

#	Part Number	Description	Qty
1	100318.09	R-Pin 2 x 38	6
2	GB6186 M8	Lock Nut M8	4
3	100189.15	Plastic Spacer 1.5 x 15 x 36	2
4	100318.26	Hex Socket Bolt M8 x 65	4
5	GB/T 5356-1988 M12	Allen Wrench for M12 Allen Bolt	1
6	GB/T 5356-1988 M8	Allen Wrench for M8 Allen Bolt	1

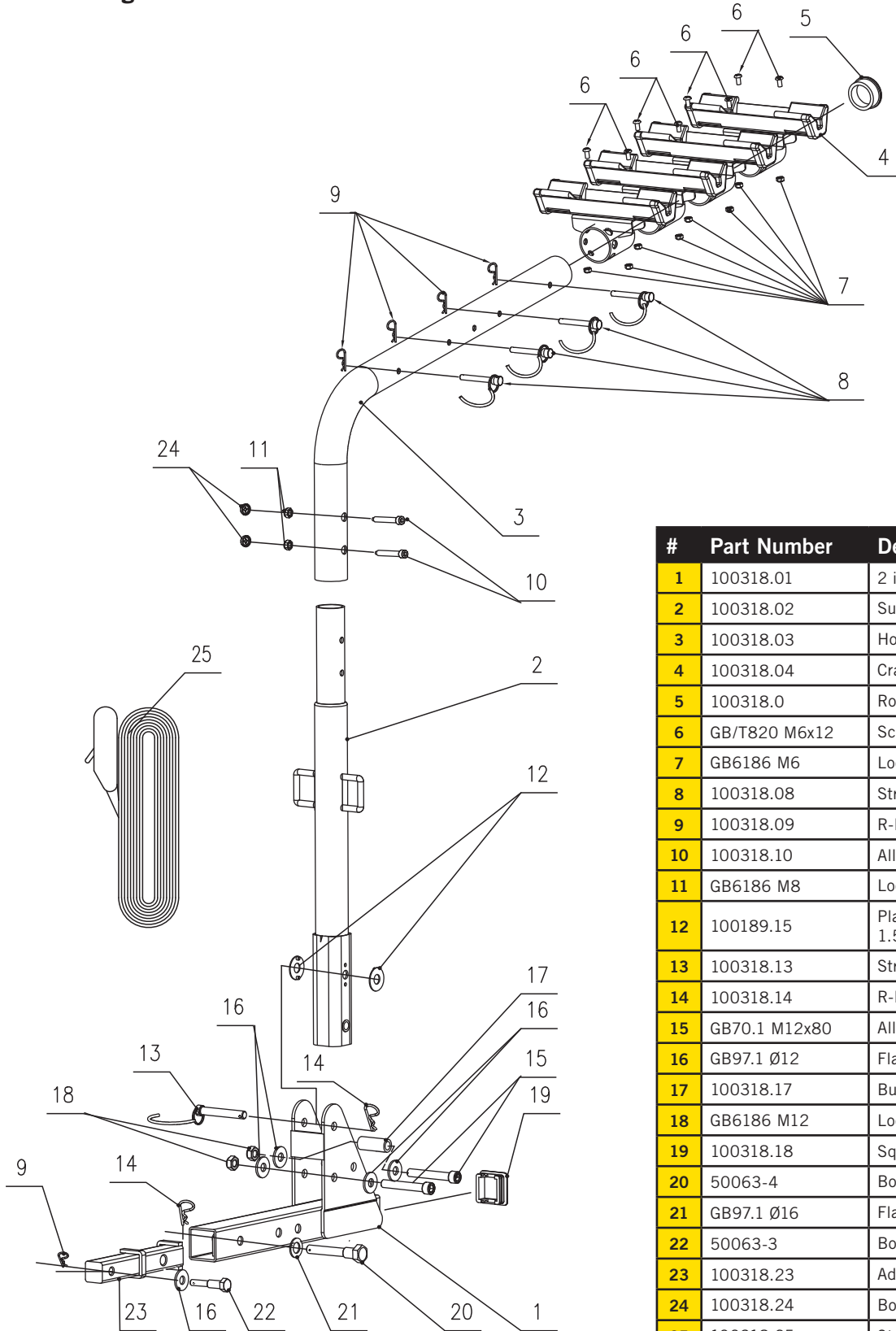
#	Part Number	Description	Qty
A	100318-A	Horizontal Bar With Cradle Assembly	1
B	100318-B	Support Pole Assembly	1
C	100318-C	2 in. x 2 in. Square Hitch Assembly	1
D	100318.23	Adapter 2 in. - 1.25 in.	1
E	100318.14	R-Pin 3 x 60	1
F	GB97.1 Ø16	Flat Washer Ø16	1
G	50063-4	Bolt M16 x 92	1
H	100318.09	R-Pin 2 x 38	1
I	GB97.1 Ø12	Flat Washer Ø12	1
J	50063-3	Bolt M12 x 60	1
K	100318.24	Bolt Cap	2
L	GB6186 M8	Lock Nut M8	2
M	100318.10	Allen Bolt M8 x 60	2
N	100318.25	Strap 2m	1

Call Customer Service if You Have Any Questions

**1-877-338-0999**

# SPECIFICATIONS

## Parts Diagram & List



#	Part Number	Description	Qty
1	100318.01	2 in. x 2 in. Square Hitch	1
2	100318.02	Support Pole	1
3	100318.03	Horizontal Bar	1
4	100318.04	Cradle Assembly	4
5	100318.0	Round Reflector	1
6	GB/T820 M6x12	Screw M6 x 12	8
7	GB6186 M6	Lock Nut M6	8
8	100318.08	Straight Pin 8 x 60	4
9	100318.09	R-Pin 2 x 38	5
10	100318.10	Allen Bolt M8 x 60	2
11	GB6186 M8	Lock Nut M8	2
12	100189.15	Plastic Spacer 1.5 x 15 x 36	2
13	100318.13	Straight Pin 12 x 88	1
14	100318.14	R-Pin 3 x 60	2
15	GB70.1 M12x80	Allen Bolt M12 x 80	2
16	GB97.1 Ø12	Flat Washer Ø12	5
17	100318.17	Buffer Pipe	1
18	GB6186 M12	Lock Nut M12	2
19	100318.18	Square Plastic Cap	1
20	50063-4	Bolt M16 x 92	1
21	GB97.1 Ø16	Flat Washer Ø16	1
22	50063-3	Bolt M12 x 60	1
23	100318.23	Adapter 2 in. - 1.25 in.	1
24	100318.24	Bolt Cap	2
25	100318.25	Strap 2m	1

Call Customer Service if You Have Any Questions

**1-877-338-0999**

# ASSEMBLY

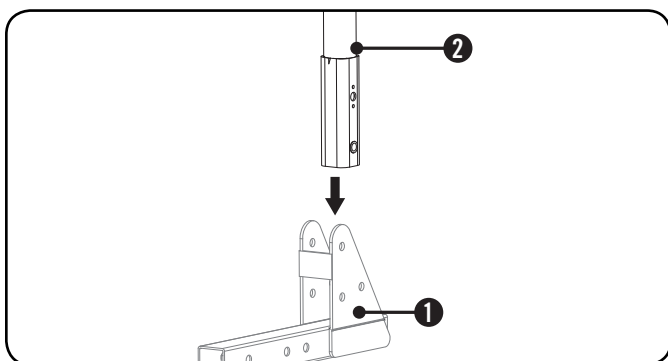


## NOTE:

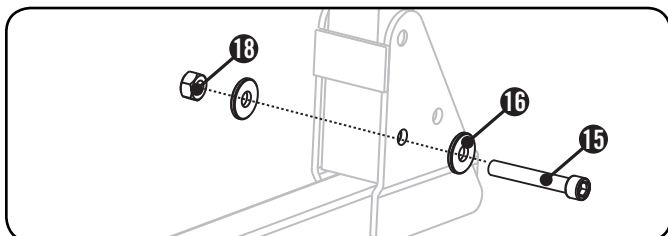
If the Bike Carrier is not properly installed, possible property damage & bodily injury may occur. Please read & fully understand all instructions before starting assembly. If any questions arise please call our help line at **1-877-338-0999**.

**1)** Insert Square Hitch Tube(1) into Receiver Tube of your vehicle. Secure before next step.

**2)** Insert Support Pole(2) into Square Hitch Tube (1) making sure to align Bolt Holes.



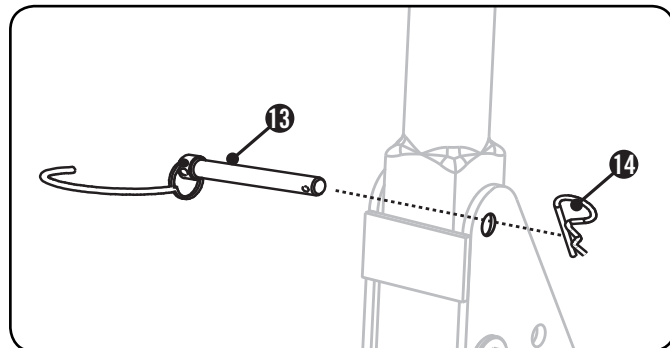
**3)** Secure Support Pole(2) to Square Hitch Tube(1) using a M12 x 80 Allen Bolt(15), two Ø12 Flat Washers(16) & M12 Lock Nut(18).



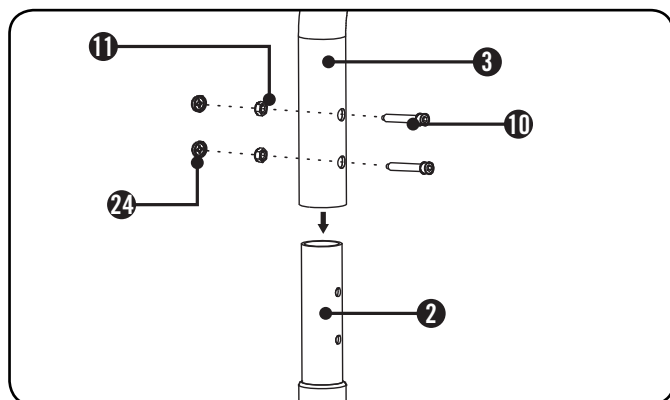
This product ships from our factory partially assembled. Clear away a dry clean space on the floor or a table to assemble Bike Carrier.

Remove all contents from box & locate all components.

**4)** Secure position of Support Pole(2) with Straight Pin(13) & R-Pin(14).



**5)** Slide Horizontal Bar(3) over Support Pole(2). Secure with M8 x 60 Allen Bolts(10), M8 Lock Nuts(11) and Bolt Caps(24).



Call Customer Service if You Have Any Questions

**1-877-338-0999**

# ASSEMBLY

## Assembling 1.25 in. Adapter

Vehicles with a 1.25 in. Hitch Receiver, please use 1.25 in. adapter supplied with this Bike Carrier.

1) Align & insert 1.25 in. Square Hitch Adapter(23) into 2 in. Square Hitch Tube(1) on Bike Carrier, as shown in image below.

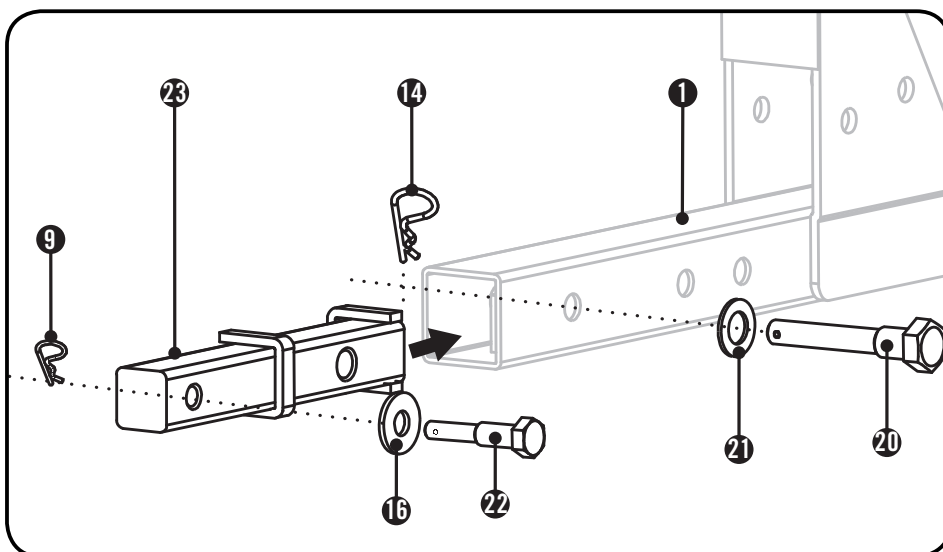
2) Secure Hitch Adapter to Hitch Tube using M16 x 92 Bolt(20), Ø16 Flat Washer(21) & R-Pin(14).

**Note:** The M16 x 92 Bolt(20) must be inserted in proper direction as shown below.

3) Once properly inserted & secured to Bike Carrier, slide 1.25 in. Square Hitch Adapter into the 1.25 in. Receiver Tube of your vehicle.

4) Secure Bike Carrier to your Vehicle using a M12 x 60 Bolt(22), Ø12 Flat Washer(16) & R-Pin(9).

**Note:** The M12 x 60 Bolt(22) must be inserted in proper direction as shown below.



### **NOTE:**

Please follow the labels on 1.25 in. Hitch Adapter for proper insertion of the Hitch Adapter & Bolts.

Call Customer Service if You Have Any Questions

**1-877-338-0999**

# MOUNTING

Now your Bike Carrier is assembled, follow these instructions below for safe & proper use.



## NOTE:

Before every use, verify all components are in good working order. Secure & tighten all hardware before mounting Bicycles to Carrier. Make sure all Straps & Ties are in good condition and not worn or frayed.

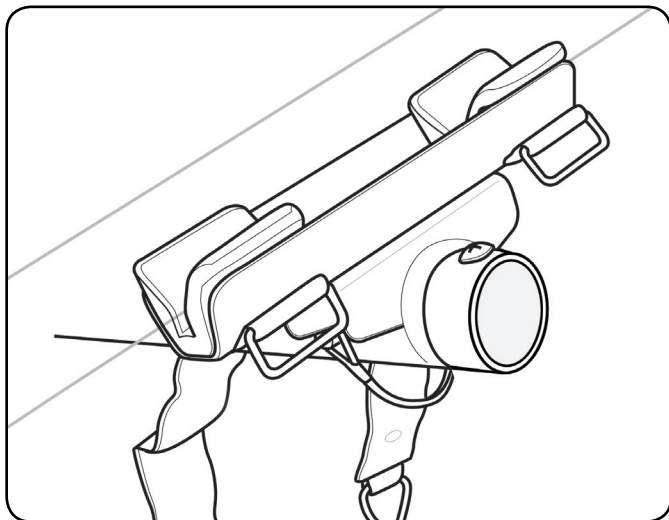


## CAUTION:

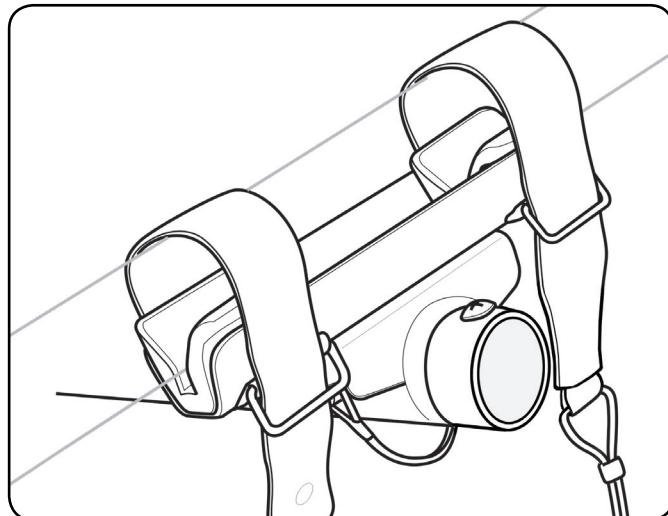
- ALWAYS secure your Bicycles to Carrier using frame Cradles & Straps.
- If any part appears to be worn, frayed, loose, or broken; DO NOT use Bike Carrier. Please tighten & replace worn or damaged parts before use.
- Additional Rope, Bungee Cords, or Cable Locks may be used for additional security & stability.

**1)** Slide the Square Hitch Tube into Receiver Tube of your Vehicle. Secure Hitch using M12 x 60 Bolt(22), Ø12 Flat Washer(16) & R-Pin(9) provided.

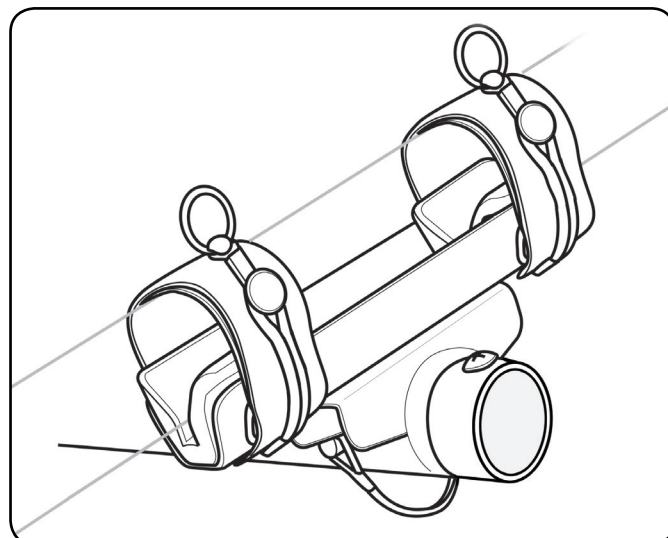
**2)** Lift a bicycle up to Horizontal Bar of Bike Carrier & place Bike Frame onto Cradle Assembly(4). See image.



**3)** Take Cradle Strap & wrap it over Bike Frame, then through Ring on Cradle. See image.



**4)** Double Strap over Ring and wrap back around tightly over Bicycle Frame. Wrap all the way around until end of Strap links with tab. See image below.



**5)** Repeat actions for additional bicycles.

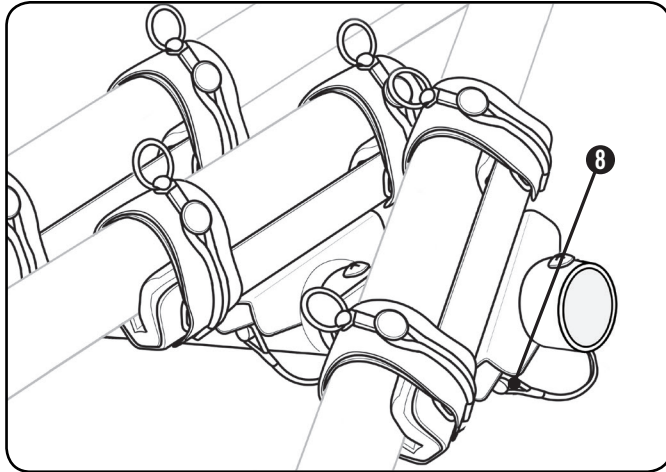
Call Customer Service if You Have Any Questions

**1-877-338-0999**



# MOUNTING

6) Depending on your style of Bicycle Frame, you may need to adjust angle of Cradle Assembly. You may also need to adjust Angle of Cradle Assembly to accommodate multiple Bicycles. Simply remove Straight Pin(8) and rotate Cradle Assembly. Re-insert Locking Pin to secure.



7) Use Strap located on Support Bar to loop through Bicycle Wheels to prevent movement during transit.

8) Make sure all Bicycles are secure & stable before moving Vehicle.



## **NOTE:**

Check Straps & Cradles regularly during use. It's a good practice to stop your vehicle after 500-feet & check security of your mounted Bicycles.

Call Customer Service if You Have Any Questions

**1-877-338-0999**

# WARRANTY

---

## WARRANTY

CHAMPION POWER EQUIPMENT  
1 YEAR LIMITED WARRANTY

### Warranty Qualifications

Champion Power Equipment (CPE) will register this warranty upon receipt of your Warranty Registration Card and a copy of your sales receipt from one of CPE's retail locations as proof of purchase. Please submit your warranty registration and your proof of purchase within ten (10) days of the date of purchase.

### Repair/Replacement Warranty

CPE warrants to the original purchaser that the mechanical and electrical components will be free of defects in material and workmanship for a period of one year (parts and labor) from the original date of purchase and 90 days (parts and labor) for commercial and industrial use. Transportation charges on product submitted for repair or replacement under this warranty are the sole responsibility of the purchaser. This warranty only applies to the original purchaser and is not transferable.

### Do Not Return The Unit To The Place Of Purchase

Contact CPE's Technical Service and CPE will troubleshoot any issue via phone or e-mail. If the problem is not corrected by this method, CPE will, at its option, authorize evaluation, repair or replacement of the defective part or component at a CPE Service Center. CPE will provide you with a case number for warranty service. Please keep it for future reference. Repairs or replacements without prior authorization, or at an unauthorized repair facility, will not be covered by this warranty.

### Warranty Exclusions

This warranty does not cover the following repairs and equipment:

#### Normal Wear

Products with mechanical and electrical components need periodic parts and service to perform well. This warranty does not cover repair when normal use has exhausted the life of a part or the equipment as a whole.

#### Installation, Use and Maintenance

This warranty will not apply to parts and/or labor if the product is deemed to have been misused, neglected, involved in an accident, abused, loaded beyond the product's limits, modified, installed improperly or connected incorrectly to any electrical component. Normal maintenance is not covered by this warranty and is not required to be performed at a facility or by a person authorized by CPE.

### Other Exclusions

This warranty excludes:

- Cosmetic defects such as paint, decals, etc.
- Wear items such as filter elements, o-rings, etc.
- Accessory parts such as starting batteries, and storage covers.
- Failures due to acts of God and other force majeure events beyond the manufacturer's control.
- Problems caused by parts that are not original Champion Power Equipment parts.

### Limits of Implied Warranty and Consequential Damage

Champion Power Equipment disclaims any obligation to cover any loss of time, use of this product, freight, or any incidental or consequential claim by anyone from using this product. THIS WARRANTY IS IN LIEU OF ALL OTHER WARRANTIES, EXPRESS OR IMPLIED, INCLUDING WARRANTIES OF MERCHANTABILITY OR FITNESS FOR A PARTICULAR PURPOSE.

A unit provided as an exchange will be subject to the warranty of the original unit. The length of the warranty governing the exchanged unit will remain calculated by reference to the purchase date of the original unit.

This warranty gives you certain legal rights which may change from state to state or province to province. Your state or province may also have other rights you may be entitled to that are not listed within this warranty.

### Contact Information

#### Address

Champion Power Equipment, Inc.  
Customer Service  
12039 Smith Ave.  
Santa Fe Springs, CA 90670 USA  
[www.championpowerequipment.com](http://www.championpowerequipment.com)

#### Customer Service

Mon – Fri 8:30 AM – 5:00 PM (PST/PDT)  
Toll Free: 1-877-338-0999  
[info@championpowerequipment.com](mailto:info@championpowerequipment.com)  
Fax no.: 1-562-236-9429

#### Technical Service

Mon – Fri 8:30 AM – 5:00 PM (PST/PDT)  
Toll Free: 1-877-338-0999  
[tech@championpowerequipment.com](mailto:tech@championpowerequipment.com)  
24/7 Tech Support: 1-562-204-1188