



OWNER'S MANUAL & OPERATING INSTRUCTIONS



TRAILER JACK

DOUBLE WHEEL

907 kg (2000 lb.) CAPACITY



MODEL NUMBER
100188

SAVE THESE INSTRUCTIONS
Important Safety Instructions
are included in this manual.

MADE IN CHINA
REV 100188-20151102

12039 Smith Ave.
Santa Fe Springs CA 90670
USA / 1-877-338-0999
www.championpowerequipment.com

Have questions or need assistance?

Do not return this product to the store!

WE ARE HERE TO HELP!

Visit our website:

www.championpowerequipment.com

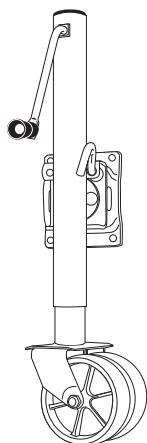
for more info:

- Product Info & Updates
- Tech Bulletins
- Frequently Asked Questions
- Product Registration

– or –

Call our Customer Care Team Toll-Free at:

1-877-338-0999



TRAILER JACK

DOUBLE WHEEL

907 kg (2000 lb.) CAPACITY

TABLE OF CONTENTS

Introduction	1	Warranty	9
Introduction	1	Warranty Qualifications	9
Manual Conventions	2	Repair/Replacement Warranty	9
Safety Rules	3	Do not return the unit to the place of purchase	9
Controls and Features	4	Warranty Exclusions	9
Trailer Jack	4	Normal Wear	9
Parts Included	4	Installation, Use and Maintenance	9
Assembly	5	Other Exclusions	9
Select Mount Point	5	Limits of Implied Warranty and Consequential	
Attach Wheel	5	Damage	9
Attach Plate	5	Contact Information	9
Operation	6	Address	9
Hitching	6	Customer Service	9
Unhitching	6	Technical Service	9
Leveling and Moving	6		
Towing	6		
Specifications	7		
Specifications	7		
Parts Diagram	7		
Parts List	8		

INTRODUCTION

Introduction

Congratulations on your purchase of a Champion Power Equipment product. Champion Power Equipment and Champion Engine Technology designs, builds, and supports all of our products to strict specifications and guidelines. With proper product knowledge, safe use, and regular maintenance, this product should bring years of satisfying service.

Every effort has been made to ensure the accuracy and completeness of the information in this manual, and we reserve the right to change, alter and/or improve the product and this document at any time without prior notice.

Since CPE/CET highly value how our products are designed, manufactured, operated and are serviced, and also highly value your safety and the safety of others, we would like you to take the time to review this product manual and other product materials thoroughly and be fully aware and knowledgeable of the assembly, operation, dangers and maintenance of the product before use. Fully familiarize yourself, and make sure others who plan on operating the product fully familiarize themselves too, with the proper safety and operation procedures before each use. Please always exercise common sense and always err on the side of caution when operating the product to ensure no accidents, property damage, or injury occurs. We want you to continue to use and be satisfied with your CPE/CET product for years to come.

Record the model and serial numbers as well as date and place of purchase for future reference. Have this information available when ordering parts and when making technical or warranty inquiries.

Champion Power Equipment Support
1-877-338-0999
Model Number
100188
Date of Purchase
Purchase Location

This manual uses the following symbols to help differentiate between different kinds of information. The safety symbol is used with a key word to alert you to potential hazards in operating and owning this equipment.

Follow all safety messages to avoid or reduce the risk of serious injury or death.

 **DANGER**

DANGER indicates an imminently hazardous situation which, if not avoided, **will** result in death or serious injury.

 **WARNING**

WARNING indicates a potentially hazardous situation which, if not avoided, **could** result in death or serious injury.

 **CAUTION**

CAUTION indicates a potentially hazardous situation which, if not avoided, **may** result in minor or moderate injury.

CAUTION

CAUTION used without the safety alert symbol indicates a potentially hazardous situation which, if not avoided, **may** result in property damage.

 **NOTE**

If you have questions regarding your product, we can help. Please call our help line at **1-877-338-0999**.

SAFETY RULES

WARNING

Read this manual thoroughly before installing and using your trailer jack. Failure to follow instructions could result in serious injury to person or property.

WARNING

NEVER exceed the rated load capacity 907 kg (2000 lb.) for the trailer jack.

DANGER

NEVER loosen, adjust or take apart the mount while the trailer jack is supporting any weight.

Verify that the trailer jack is securely mounted and that all the hardware is in good working condition before each use.

DANGER

ALWAYS keep hands, feet, arms and legs out from under the trailer tongue when hitching, unhitching or moving your trailer.

DANGER

NEVER allow children to operate the trailer jack.

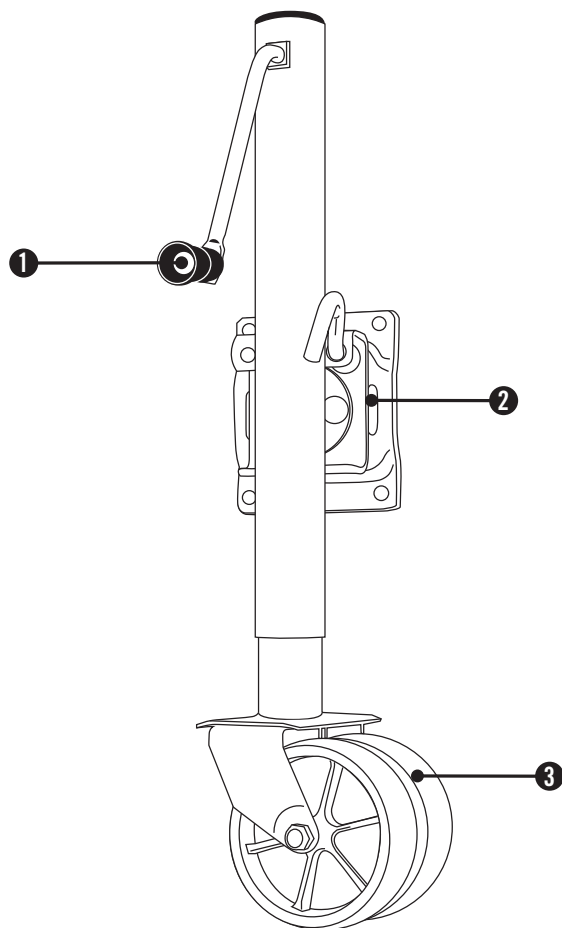
Keep children safe and clear when operating the trailer jack.

WARNING

Take precautions to prevent uncontrolled movement of the trailer when using the trailer jack.

Read this owner's manual before using your trailer jack. Familiarize yourself with the location and function of the controls and features. Save this manual for future reference.

Trailer Jack



- (1) **Hand Crank** – Comfort handle to extend and retract the trailer jack.
- (2) **Pivoting Mounting Bracket** – Locking, pivoting mounting bracket to secure the jack for operation and stow the jack horizontally when not in use.

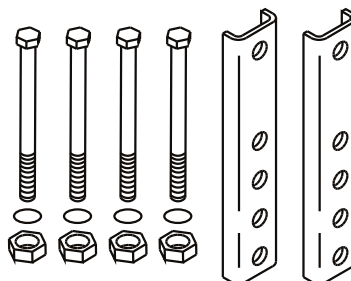
- (3) **Swivel Caster** – Two large 15.2 cm (6 in.) swivel-mounted wheels for easy maneuverability.

Parts Included

Your 100188 Trailer Jack ships with the following parts:

Bolt Kit

- Bolt M10 x 110 mm 4
- Spring Washer 4
- Nuts M10 4
- Mounting Strap 2



ASSEMBLY

Your trailer jack must be properly mounted before use. If you have any questions regarding the mounting of your trailer jack, call our help line at 1-877-338-0999. Please have your model number available.

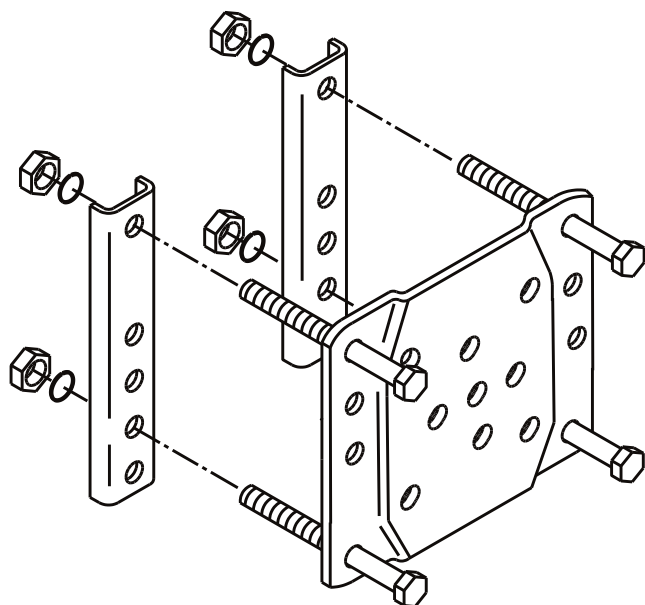
Select Mount Point

Your trailer jack fits up to 7.6 cm x 12.7 cm (3 in. x 5 in.) trailer frames. It is designed to be mounted on either side of the trailer tongue. It can swing either direction to the stow position (wheel pointed to the trailer or to the ball hitch). Plan the location, allowing enough clearance for stowing the jack and turning the handle.

Attach Plate

! CAUTION

Properly support the tongue of the trailer to provide clearance for the jack before installation. Use chocks to block the trailer to insure it will not roll during installation.



1. Position the mounting bracket (100188-14) on the side of the trailer tongue in the desired mounting position.
2. Position the mounting straps (100188-12) on the opposite side of the tongue.
3. Insert the cap bolts (100188-13) through the mounting plate and the mounting straps.
4. Secure the bolts with the spring washers (100188-11) and nuts (100188-10). Do not tighten the nuts at this point.

Attach Plate Cont'd.

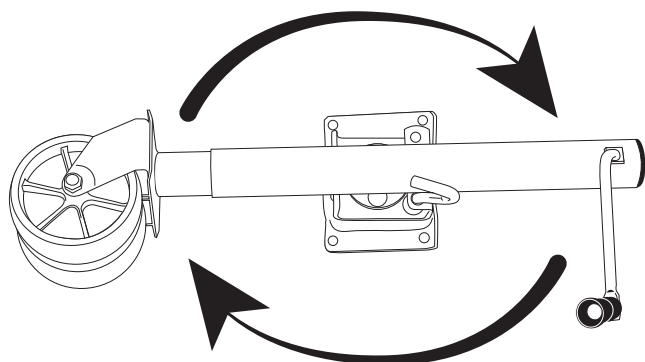
5. Inspect the position of the trailer jack. Use a rubber mallet or hammer with a block of wood to tap the jack into proper alignment. Bolts must be at a right angle to the mounting plates.
6. Tighten the nuts evenly by small increments to ensure the jack stays in proper alignment.
7. Turn the handle (100188-7) in both directions to test proper operation.

⚠ WARNING

Check the mounting bolts and nuts to ensure proper installation before operating this trailer jack.

Hitching

1. Maneuver the trailer so the hitch is directly over the towing vehicle's hitch ball.
2. Turn the handle counterclockwise to lower the tongue hitch onto the hitch ball.
3. Secure the trailer with the hitch retainer mechanism.
4. Continue turning the handle counterclockwise until the trailer jack is fully retracted.
5. Pull the plunger pin (100188-26) and swing the trailer jack back to the stowed position, parallel to the trailer tongue.
6. Align the holes and push the plunger pin back in to secure the jack.

**Unhitching**

1. Use chocks to secure the trailer from moving.
2. Pull the plunger pin (100188-26) and swing the trailer jack down to the extended position, perpendicular to the trailer tongue.
3. Align the holes and push the plunger pin back in to secure the jack.
4. Release the hitch retainer mechanism.
5. Turn the handle clockwise to extend the jack until the tongue has been lifted from the hitch ball.

⚠ WARNING

Keep all body parts clear of the hitch, the tongue and the area underneath the tongue.

Leveling and Moving

When the trailer is unhitched, it can be leveled or adjusted in pitch. Turn the handle clockwise to extend the jack or counterclockwise to retract the jack. In this mode, the trailer is a three wheeled vehicle that can be moved from one position to another.

⚠ WARNING

ALWAYS take precautions to protect against uncontrolled movement.

Towing

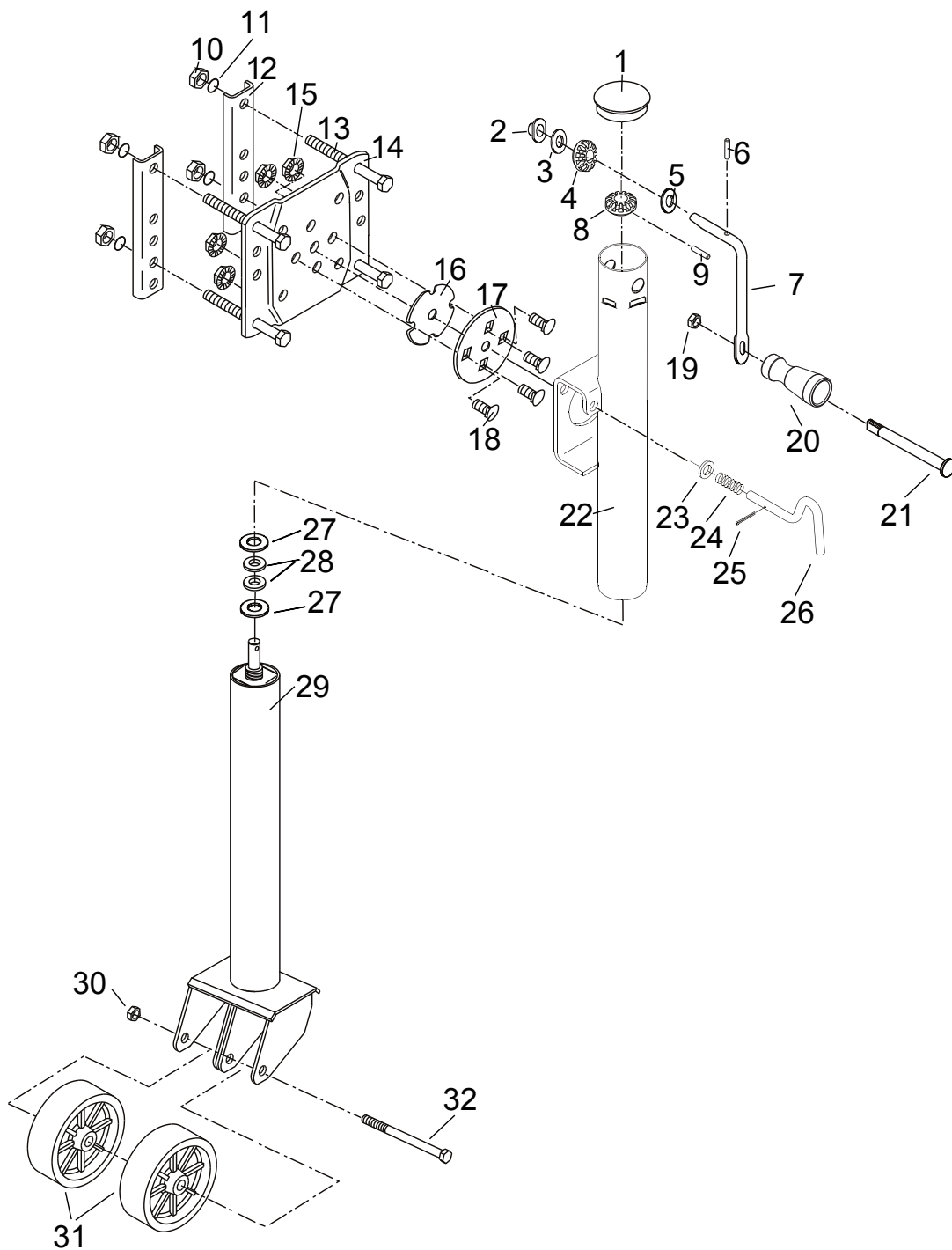
The trailer jack must be placed in the stowed, horizontal position while the trailer is being towed.

SPECIFICATIONS

Specifications

- Capacity 907 kg (2000 lb.)
- Maximum Lift 62.9 cm (24.8 in.)
- Wheel Diameter 14.7 cm (5.8 in.)
- Wheel Width 4.8 cm (1.9 in.)
- Weight 8.3 kg (18.3 lb.)

Parts Diagram



#	Part Number	Description	Qty
1	100188-1	Cap	1
2	100188-2	Square Bushing	1
3	100188-3	3mm Thickness Adjusting Washer	1
4	100188-4	Vertical Bevel Gear	1
5	100188-5	2mm Thickness Adjusting Washer	1
6	100188-6	Groove Pin	1
7	100188-7	Handle	1
8	100188-8	Horizontal Bevel Gear	1
9	100188-9	Dowel Pin	1
10	100188-10	Nut M10	4
11	100188-11	Spring Washer ϕ 10mm	4
12	100188-12	Mounting Strap	2
13	100188-13	Bolt M10 x 110 mm	4
14	100188-14	Mounting Bracket	1
15	100188-15	Flange Nut M10	4
16	100188-16	Bracket Spacer	1
17	100188-17	Bracket Cover	1
18	100188-18	Cap Screw M10 x 25	4
19	100188-19	Lock Nut M10	1
20	100188-20	Handle Sleeve	1
21	100188-21	Handle Screw	1
22	100188-22	Outer Tube Assembly	1
23	100188-23	Washer ϕ 13mm	1
24	100188-24	Spring	1
25	100188-25	Cotter Pin	1
26	100188-26	Plunger Pin	1
27	100188-27	Washer ϕ 13mm	2
28	100188-28	Nylon Washer ϕ 13mm	2
29	100188-29	Inner Tube Assembly	1
30	100188-30	Lock Nut M12	1
31	100188-31	Wheel 6 in.	2
32	100188-32	Bolt M12 x 140	1

WARRANTY

WARRANTY

CHAMPION POWER EQUIPMENT
2 YEAR LIMITED WARRANTY

Warranty Qualifications

Champion Power Equipment (CPE) will register this warranty upon receipt of your Warranty Registration Card and a copy of your sales receipt from one of CPE's retail locations as proof of purchase.

Please submit your warranty registration and your proof of purchase within ten (10) days of the date of purchase.

Repair/Replacement Warranty

CPE warrants to the original purchaser that the components will be free of defects in material and workmanship for a period of two (2) years from the original date of purchase. Transportation charges on product submitted for repair or replacement under this warranty are the sole responsibility of the purchaser. This warranty only applies to the original purchaser and is not transferable.

Do Not Return The Unit To The Place Of Purchase

Contact CPE's Technical Service and CPE will troubleshoot any issue via phone or e-mail. If the problem is not corrected by this method, CPE will, at its option, authorize evaluation, repair or replacement of the defective part or component at a CPE Service Center. CPE will provide you with a case number for warranty service. Please keep it for future reference. Repairs or replacements without prior authorization, or at an unauthorized repair facility, will not be covered by this warranty.

Warranty Exclusions

This warranty does not cover the following repairs and equipment:

Normal Wear

This warranty does not cover repair when normal use has exhausted the life of a part or the equipment as a whole.

Installation, Use and Maintenance

This warranty will not apply to parts and/or labour if this trailer jack is deemed to have been misused, neglected, involved in an accident, abused, loaded beyond the jack's limits, modified, installed improperly or connected incorrectly to any trailer. Normal maintenance such as cleaning and obstruction due to buildup is not covered by this warranty.

Other Exclusions

This warranty excludes: Cosmetic defects such as paint, decals, etc. Failures due to acts of God and other force major events beyond the manufacturer's control. Problems caused by parts that are not original Champion Power Equipment parts.

Limits of Implied Warranty and Consequential Damage

Champion Power Equipment disclaims any obligation to cover any loss of time, use of this product, freight, or any incidental or consequential claim by anyone from using this bike carrier. THIS WARRANTY IS IN LIEU OF ALL OTHER WARRANTIES, EXPRESS OR IMPLIED, INCLUDING WARRANTIES OF MERCHANTABILITY OR FITNESS FOR A PARTICULAR PURPOSE.

A unit provided as an exchange will be subject to the warranty of the original unit. The length of the warranty governing the exchanged unit will remain calculated by reference to the purchase date of the original unit.

This warranty gives you certain legal rights which may change from province to province or state to state. Your state/province may also have other rights you may be entitled to that are not listed within this warranty.

Contact Information

Address

Champion Power Equipment, Inc.
Customer Service
12039 Smith Ave.
Santa Fe Springs, CA 90670
www.championpowerequipment.com

Customer Service

Mon – Fri 8:30 AM – 5:00 PM (PST/PDT)
Toll Free: 1-877-338-0999
info@championpowerequipment.com
Fax no.: 1-562-236-9429

Technical Service

Mon – Fri 8:30 AM – 5:00 PM (PST/PDT)
Toll Free: 1-877-338-0999
tech@championpowerequipment.com
24/7 Tech Support: 1-562-204-1188